

Annual Accountability Report

on Emergency Departments

April 1, 2018 – March 31, 2019



Table of Contents

Introduction	1
Emergency Care in Nova Scotia	2
Emergency Department Closures	3
Hours of Operation and Collaborative Emergency Centres	4
ED Hours Closed/Open (by Zone, Facility and Facility Type), 2018–19	6
Temporary ED Closure Hours & Public Consultations by Zone	7
Appendix A: Temporary ED Closures by Date and Hours Closed	23

Introduction

In this report, you will find data from Nova Scotia Health Authority (NSHA) and the IWK Health Centre (IWK) related to all emergency department (ED) closures between April 1, 2018 and March 31, 2019.

Nova Scotia's health care system is complex and not without its challenges. Government and NSHA are working hard to try and address them so Nova Scotians have access to the care they need, when they need it. There have been investments in a number of areas including emergency services, primary health care and health care infrastructure.

In the summer of 2018, government introduced a Locum Incentive Program and emergency shift premium to help cover ED shifts by making it more financially attractive. These initiatives kept EDs open 314 days from July 2018 to March 31, 2019.

Compensation for emergency services was also a significant focus during contract negotiations with Doctors Nova Scotia which started in the fall of 2018 and is reflected in the five-year agreement reached in November 2019.

At the same time, government is trying to ensure Nova Scotians are getting the care they need in the right setting and reducing the number of unnecessary trips to emergency departments. Government and NSHA are strengthening and expanding collaborative family practice teams across the province to connect more people to a provider. There is also work being done with paramedics and pharmacists to enable them to work to their full scope of practice, giving Nova Scotians another option to get the care they need.

Modernizing Nova Scotia's aging health care infrastructure is also key to recruitment. Government is investing billions of dollars to improve space, equipment and technology and to offer services where they make the most sense without competing for resources. Some of that work includes building a new ED at Cape Breton Regional Hospital, expanding the Glace Bay ED and doubling the size of the IWK ED.

Government is committed to continuing this important work toward improvements.

Responsibilities and Accountabilities

An Annual Accountability Report on Emergency Departments is prepared pursuant to Section 6 of the *Emergency Department Accountability Act* (2014).

Emergency department closures that are unpredictable and unplanned are considered temporary closures. In 2018-19, 21 hospitals experienced temporary closures as a result of unavailability of emergency department staff (doctors, nurses, or paramedics).

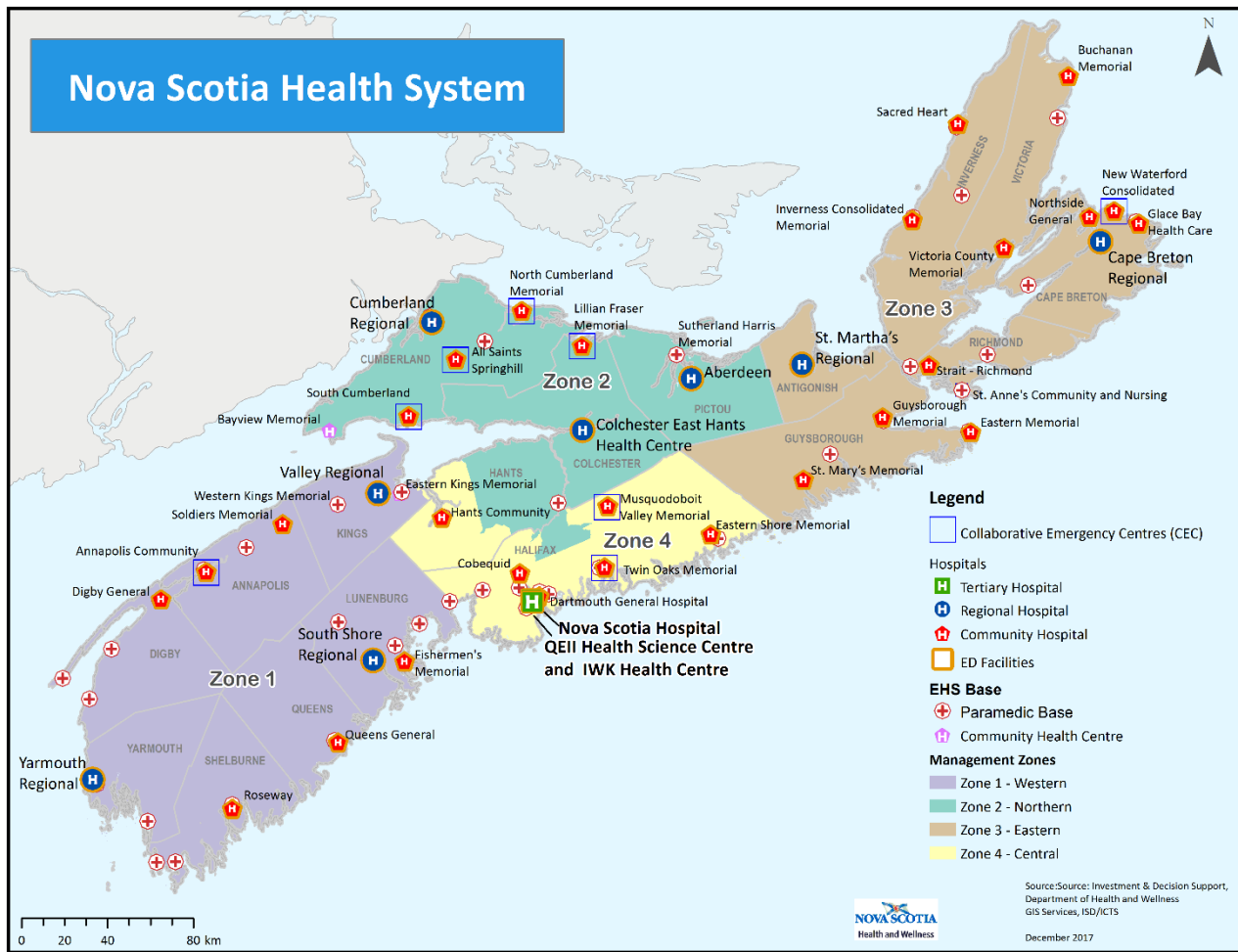
Some hospitals in the province have established hours of operation that are different than 24/7. These are considered scheduled hours of closure and were established after consultation with communities.

Emergency Care in Nova Scotia

Emergency departments (EDs) and their staff are an essential part of the province's health care system, quickly assessing and managing patients with unexpected illness or injury.

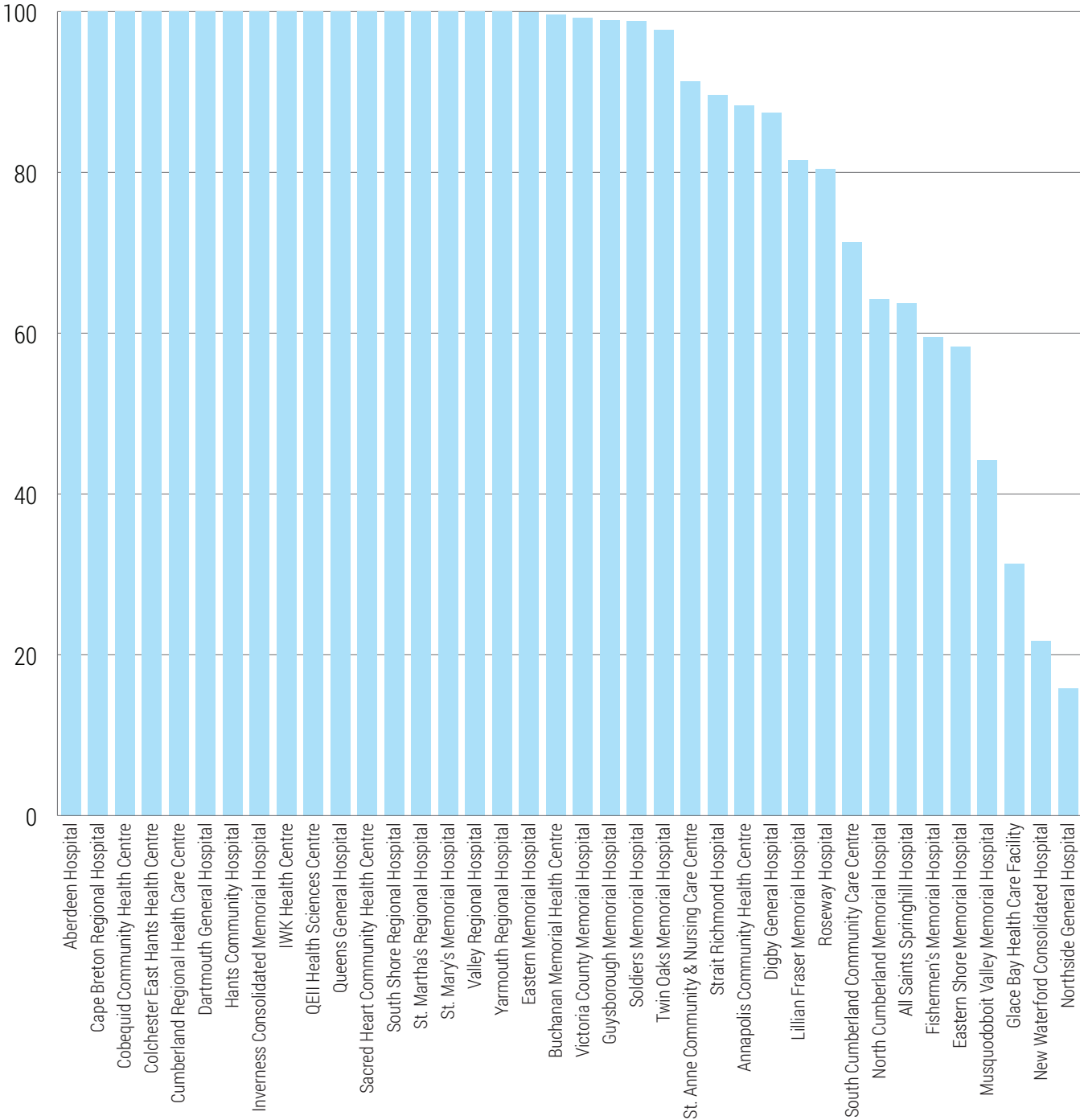
Most of Nova Scotia's 38 emergency departments operate on a 24/7 schedule, except for seven that have established different hours of operation after consultation with communities. These facilities are considered to have scheduled hours of closure. Unplanned emergency department closures are considered temporary closures. Typically, these closures are due to unavailability of emergency department staff (doctors, nurses, or paramedics). Twenty-one community hospitals experienced temporary closures in 2018-19.

The majority of temporary closures occur in smaller, rural emergency departments. Tertiary care (IWK Health Centre and QEII Health Sciences Centre) and regional hospital emergency departments are required to be open 24 hours a day, seven days a week, 365 days a year and these have never experienced a planned or temporary closure. In community hospitals, when an ED has experienced an ongoing pattern of closures, the health authority consults with the local community to address concerns and identify a course of action. More information on consultations held in 2018-19 is included in this report.



Emergency Department Closures

Percentage of Scheduled Hours Open for Emergency Departments, 2018–19



Hours of Operation and Collaborative Emergency Centres

Nova Scotia’s emergency care system includes two tertiary care hospitals (QEII and IWK); nine regional hospitals; 19 community hospitals with emergency departments; eight collaborative emergency centres, and a 24/7/365 emergency health services (EHS) system. In addition, the province has a telecare service (811) to provide nursing advice and help callers determine the most appropriate level of care for their needs, and a mobile mental health line to support people in crisis. Both the 811 service and the mobile mental health line also operate 24/7/365 and have had no closures.

Facility Type	Scheduled hours of operation
QEII and IWK	24/7
Regional hospital	24/7
Community hospital	Varies by facility
Collaborative Emergency Centre	Varies by facility
911 Emergency Health Services	24/7
811 Nurse Telecare	24/7
Mobile crisis line	24/7

Regional hospitals are required to maintain a 24/7, year-round schedule, and every effort is made to maintain a 24/7, year-round schedule for community hospitals with emergency departments.

CHANGES TO SCHEDULED HOURS IN 2018–19

On June 1, 2018, Annapolis Community Health Centre began new hours of operation, moving from seven days per week to five days per week with regularly scheduled closures on Tuesdays and Thursdays. This change has reduced the number of unscheduled closures, and offers more consistent service for the community. It has also provided opportunity for consistent ED availability planning with neighboring hospitals in Digby and Middleton. The community was informed of the changes through public advisories in local media outlets, notices in social media, ongoing public education by hospital staff, and most importantly, ongoing discussion between physician providers and patients.

Ongoing ED closures in Glace Bay, North Sydney and New Waterford occurred throughout the year. These closures have been communicated on a weekly basis to ensure the communities have adequate notice. New processes were implemented at Glace Bay and New Waterford (Northside General in November 2017) to better manage flow through the emergency department and to support patients and staff.

COLLABORATIVE EMERGENCY CENTRES

Collaborative Emergency Centres (CECs) were designed to provide expanded access to primary health care with same-day or next-day appointments with expanded hours and a team approach to care. For most CECs, during nighttime hours there is a collaborative care team available made up of paramedics and/or registered nurses who are supported by an Emergency Health Services (EHS) physician providing oversight via phone consultation. There are eight CECs across the province.

Facility	Community	Scheduled hours of operation
South Cumberland Community Care Centre	Parrsboro	24/7 year-round
All Saints Springhill Hospital	Springhill	24/7 year-round
North Cumberland Memorial Hospital	Pugwash	24/7 year-round
Twin Oaks Memorial Hospital	Musquodoboit Harbour	24/7 year-round
Annapolis Community Health Centre	Annapolis Royal	24/5 year-round, closed on Tuesdays and Thursdays
Musquodoboit Valley Memorial Hospital	Middle Musquodoboit	Daily, 8:00am–8:00pm
New Waterford Consolidated Hospital	New Waterford	Tuesday - Saturday, 7:00 am-5:00 pm
Lillian Fraser Memorial Hospital	Tatamagouche	Monday - Friday, 8:00 am-4:00 pm and Saturday - Sunday, 8:00 am-8:00 pm

ED Hours Closed/Open (by Zone, Facility and Facility Type), 2018–19

Zone	Facility type	Facility Name	Closure Hours 2018–19			Hours Open 2018–19	% Open 2018–19
			Temporary	Scheduled	Total		
1	Regional	South Shore Regional Hospital	0.0	0.0	7,485.5	8,760.0	100%
	Regional	Yarmouth Regional Hospital	0.0	0.0		8,760.0	100%
	Regional	Valley Regional Hospital	0.0	0.0		8,760.0	100%
	Community	Digby General Hospital	1,101.3	0.0		7,658.7	87%
	Community	Fishermen's Memorial Hospital	257.5	3,285.0		5,217.5	95%
	Community	Roseway Hospital	1,719.5	0.0		7,040.5	80%
	Community	Soldiers Memorial Hospital	100.5	0.0		8,659.5	99%
	Community	Queens General Hospital	0.0	0.0		8,760.0	100%
	CEC	Annapolis Community Health Centre	261.7	760.0		7,738.3	97%
2	Regional	Colchester East Hants Health Centre	0.0	0.0	10,441.0	8,760.0	100%
	Regional	Cumberland Regional Health Care Centre	0.0	0.0		8,760.0	100%
	Regional	Aberdeen Hospital	0.0	0.0		8,760.0	100%
	CEC	All Saints Springhill Hospital	3,177.0	0.0		5,583.0	64%
	CEC	North Cumberland Memorial Hospital	3,132.0	0.0		5,628.0	64%
	CEC	South Cumberland Community Care Centre	2,511.0	0.0		6,249.0	71%
	CEC	Lillian Fraser Memorial Hospital ¹	365.0	1,256.0		7,139.0	95%
3	Regional	Cape Breton Regional Hospital	0.0	0.0	22,116.5	8,760.0	100%
	Regional	St. Martha's Regional Hospital	0.0	0.0		8,760.0	100%
	Community	Eastern Memorial Hospital	5.0	0.0		8,755.0	100%
	Community	Guysborough Memorial Hospital	96.0	0.0		8,664.0	99%
	Community	St. Anne Community & Nursing Care Centre	758.0	0.0		8,002.0	91%
	Community	St. Mary's Memorial Hospital	0.0	0.0		8,760.0	100%
	Community	Strait Richmond Hospital	906.0	0.0		7,854.0	90%
	Community	Buchanan Memorial Health Centre	29.5	0.0		8,730.5	100%
	Community	Glace Bay Health Care Facility	5,554.0	464.0		2,742.0	33%
	Community	Inverness Consolidated Memorial Hospital	0.0	0.0		8,760.0	100%
	Community	Victoria County Memorial Hospital	72.0	0.0		8,688.0	99%
	Community	Northside General Hospital	1,232.0	6,144.0		1,384.0	53%
	Community	Sacred Heart Community Health Centre	0.0	0.0		8,760.0	100%
	CEC	New Waterford Consolidated Hospital	621.0	6,235.0		1,904.0	75%
4	Tertiary	QEII Health Sciences Centre	0.0	0.0	8,740.3	8,760.0	100%
	Regional	Dartmouth General Hospital	0.0	0.0		8,760.0	100%
	Community	Cobequid Community Health Centre	0.0	0.0		6,570.0	75%
	Community	Eastern Shore Memorial Hospital	3,654.5	0.0		5,105.5	58%
	Community	Hants Community Hospital	0.0	0.0		8,760.0	100%
	CEC	Musquodoboit Valley Memorial Hospital ¹	508.5	4,380.0		3,871.5	88%
	CEC	Twin Oaks Memorial Hospital	197.3	0.0		8,562.7	98%
IWK	Tertiary	IWK Health Centre	0.0	0.0	0.0	8,760.0	100%
Total:			26,259.3	22,524.0	48,783.3	281,906.7	91%

Temporary ED Closure Hours and Public Consultations by Zone

Where an emergency department of a health authority has experienced an ongoing pattern of closure of the emergency department in the last fiscal year, the health authority shall consult with the community served by the emergency department as part of the consultations conducted in accordance with its next public engagement plan as defined by the Health Authorities Act (Emergency Department Accountability Act, 2014¹).

The following consultations were conducted based on facilities that experienced an ongoing pattern of temporary closures.

WESTERN ZONE (1)

Facility	Hours of temporary ED closures
Annapolis Community Health Centre	261.7 hours
Digby General Hospital	1,101.3 hours
Fishermen's Memorial Hospital	257.5 hours
Roseway Hospital	1,719.5 hours
Soldiers Memorial Hospital	100.5 hours
Total	3,440.5 hours

Public Consultation: Annapolis Community Health Centre

Date	Chair/Speakers	Attendance
September 18, 2018 October 23, 2018 November 20, 2018 February 19, 2019	Chair: Chair Annapolis West Health Foundation NSHA speaker: ACHC Site Manager	12–15
<p>Summary of discussion:</p> <p>Annapolis West Health Foundation meetings.</p> <ul style="list-style-type: none"> • Discussion of physician and nurse resources that lead to planned and unplanned closures of the Collaborative Emergency Centre • Specific measures to communicate planned closures to public discussed 		
<p>Western Zone Action (specific to Emergency Departments):</p> <ul style="list-style-type: none"> • Develop plans to recruit more nurses, NP and physicians to the area • Implement specific measure to communicate planned closures 		

¹ Emergency Department Accountability Act, 2009, RSNS 2014, c. 32, ss. 110–114

Public Consultation: Digby General Hospital

Date	Chair/Speakers	Attendance
August 1, 2018	Western Zone Medical Physician Lead	12
<p>Summary of discussion:</p> <ul style="list-style-type: none"> • Digby and Area stakeholder meeting held at the Digby General Hospital with representation from Site Administration, Digby and Area Health Services Foundation, Town of Digby, Municipality of Digby, Local MLA, Bear River Community Health Clinic, Western Zone Primary Care Leads, Physician and NP providers from Digby Collaborative Care Clinic • Reviewed ED closures over the past months. These were due to physician unavailability. • Discussed ED recruitment challenges and ongoing recruitment efforts. • Advanced Care Paramedics have been hired as casual employees for ED Triage role and are being oriented to the department. They all hold full time positions with EHS. • Primary Care physicians (3) from the Collaborative Care Centre attended the meeting (one of them provides ED coverage one 12 hr. shift per week). 		
<p>Western Zone Action (specific to Emergency Departments):</p> <ul style="list-style-type: none"> • Discussion related to communication strategies with local community via Municipal Newsletter and via the information sharing by members of the stakeholder group. • Continue working collaboratively with Zone Physician Recruiter and local stakeholders in recruiting physicians for the emergency department as well as Primary Care 		
Date	Chair/Speakers	Attendance
March 6, 2019	Mayor	15
<p>Summary of discussion:</p> <ul style="list-style-type: none"> • Digby and Area stakeholder meetings held at the Digby General Hospital with representation from Site Administration, Digby and Area Health Services Foundation, Town of Digby, Municipality of Digby, Local MLA, Western Zone Primary Care Lead, Physician (1) and NP (2) providers from Digby Collaborative Care Clinic • Reviewed Pilot Nurse Practitioner/ED Physician Model to be initiated on April 1st, 2019 with one NP offered a position in February 2019 and scheduled to start April 1st. Two additional NP candidates have been interviewed with job offers to be finalized in May 2019. • Digby and Area Health Services Charitable Foundation has leased a 2-bedroom apartment in Digby fully furnished and with WiFi and cable as well as housekeeping services. This is a very positive recruitment effort to support ED and primary care providers who are from outside the area and interested in supporting the emergency department and/or primary care services. • Reviewed recruitment of additional physician providers for the ED – one ED physician will provide coverage 2 weeks per month (will use apartment leased by Digby and Area Charitable Foundation for accommodations during this time). • Updated ongoing recruitment efforts related to emergency care and primary care providers. • Stakeholder group has organized a physician recruitment committee to work collaboratively with Zone recruiter. Focus of the local group will be to support recruiter with showcasing the community and identifying incentive measures which could be supported by the community. 		
<p>Western Zone Action (specific to Emergency Departments):</p> <ul style="list-style-type: none"> • Continue working collaboratively with Zone Physician Recruiter and local stakeholders in recruiting physicians for the emergency department as well as primary care • Commit to continued communication with the community; opportunity to use Municipal Council monthly newsletter will be explored. 		

Public Consultation: Roseway Hospital

Date	Chair/Speakers	Attendance
April 11, 2018	Interim CAO Municipality of Shelburne Health Services Site Lead, Roseway Hospital	2
Summary of discussion: <ul style="list-style-type: none"> • New interim CAO • Familiarize with what was being worked on with previous CAO in terms of physician recruitment for PHC & ED 		
Western Zone Action (specific to Emergency Departments): <ul style="list-style-type: none"> • Involve Municipality in recruitment efforts. 		
Date	Chair/Speakers	Attendance
May 9, 2018	Primary Health Care Stakeholder Meeting	6
Summary of discussion: <ul style="list-style-type: none"> • Status of physician recruitment and what is being done to keep the ED open 		
Western Zone Action (specific to Emergency Departments): <ul style="list-style-type: none"> • Continued communication with regards to physician and nursing resources • Continue plans and strategies to maintain nursing recruitment and retention 		
Date	Chair/Speakers	Attendance
May 16, 2018	Municipality of District of Shelburne Health Services Site Lead, Roseway Hospital	3
Summary of discussion: <ul style="list-style-type: none"> • Physician recruitment efforts 		
Western Zone Action (specific to Emergency Departments): <ul style="list-style-type: none"> • Ongoing communication 		
Date	Chair/Speakers	Attendance
June 14, 2018	Warden & CAO, Shelburne Municipality Western Zone Medical Physician Lead Chair, Community Healthcare Recruitment Committee Warden, Barrington Municipality Councilor Municipality District of Shelburne Site Lead Physician, Shelburne Director, Primary Health Care, Western Zone Health Services Site Lead, Roseway Hospital	12
Summary of discussion: <ul style="list-style-type: none"> • Physician recruitment/ED • Skype discussion to talk about Dalhousie Medicine Residency Program 		
Western Zone Action (specific to Emergency Departments): <ul style="list-style-type: none"> • Continued communication. 		

Date	Chair/Speakers	Attendance
June 20, 2018	Municipality of District of Shelburne Health Services Site Lead, Roseway Hospital	4
Summary of discussion:		
<ul style="list-style-type: none"> • Updates re communication 		
Action (specific to Emergency Departments):		
<ul style="list-style-type: none"> • Communication ongoing 		
Date	Chair/Speakers	Attendance
September 13, 2018	Shelburne/NSHA Stakeholders	6
Summary of discussion:		
<ul style="list-style-type: none"> • Status of recruitment • Status of ED 		
Western Zone Action (specific to Emergency Departments):		
<ul style="list-style-type: none"> • Communication ongoing 		
Date	Chair/Speakers	Attendance
November 5, 2018	Western Zone Medical Lead Director, PHC Western Zone Representative, Municipality District Shelburne CAO Municipality District Shelburne Representative, Public Engagement Health Services Site Lead, Roseway Hospital	6
Summary of discussion:		
<ul style="list-style-type: none"> • Shelburne Stakeholder Group Planning Conversations • How do we educate/communicate to public? 		
Western Zone Action (specific to Emergency Departments):		
<ul style="list-style-type: none"> • Develop and implement planning group 		
Date	Chair/Speakers	Attendance
November 14, 2018	President & CEO NSHA Representative, NSHA Public Engagement & Communications Health Services Manager, Roseway Hospital CAO Municipality District Shelburne Warden, Municipality District Shelburne	6
Summary of discussion:		
<ul style="list-style-type: none"> • Engagement opportunities 		
Western Zone Action (specific to Emergency Departments):		
<ul style="list-style-type: none"> • Increase community engagement and involve community stakeholders in the planning process 		

Date	Chair/Speakers	Attendance
January 4, 2019	CAO Municipality District Shelburne Warden, Municipality District Shelburne Health Services Site Lead, Roseway Hospital	3
Summary of discussion: <ul style="list-style-type: none"> Physician education funding related to emergency service work has been requested; discussion around accommodation of same. Municipality District of Shelburne interested in supporting new physician coming to area with funding for educational requirements 		
Western Zone Action (specific to Emergency Departments): <ul style="list-style-type: none"> Request the physician write a proposal for consideration 		
Date	Chair/Speakers	Attendance
February 22, 2019	CAO Municipality District Shelburne Warden, Municipality District Shelburne Health Services Site Lead, Roseway Hospital	3
Summary of discussion: <ul style="list-style-type: none"> Municipality District of Shelburne willing to fund physician education 		
Western Zone Action (specific to Emergency Departments): <ul style="list-style-type: none"> Inform physician 		
Date	Chair/Speakers	Attendance
March 11, 2019	President & CEO NSHA Representative, NSHA Public Engagement & Communications Representative, DHW Public Engagement & Communications Health Services Site Lead, Roseway Hospital Municipality of District of Shelburne Council	14
Summary of discussion: <ul style="list-style-type: none"> Council meeting in council chambers ED closures – what is being done in terms of physician recruitment 		
Western Zone Action (specific to Emergency Departments): <ul style="list-style-type: none"> Commit to continued communication with Council and community 		

Public Consultation: Soldier's Memorial Hospital

Date	Chair/Speakers	Attendance
April 19, 2018	Chair, Soldier's Memorial Hospital (SMH) Foundation	10
Summary of discussion: <ul style="list-style-type: none"> • SMH Foundation Director Meeting 		
Western Zone Action (specific to Emergency Departments): <ul style="list-style-type: none"> • Continued communication with regards to physician and nursing resources • Continue plans and strategies to maintain nursing recruitment and retention 		
Date	Chair/Speakers	Attendance
June 18, 2018	Chair, Soldier's Memorial Hospital Foundation	20
Summary of discussion: <ul style="list-style-type: none"> • SMH Foundation Annual General Meeting 		
Western Zone Action (specific to Emergency Departments): <ul style="list-style-type: none"> • Continued communication with regards to physician and nursing resources • Continue plans and strategies to maintain nursing recruitment and retention 		
Date	Chair/Speakers	Attendance
December 3, 2018	Chair, Soldier's Memorial Hospital Foundation	10
Summary of discussion: <ul style="list-style-type: none"> • SMH Foundation Director Meeting 		
Western Zone Action (specific to Emergency Departments): <ul style="list-style-type: none"> • Continued communication with regards to physician and nursing resources • Continue plans and strategies to maintain nursing recruitment and retention 		

NORTHERN ZONE (2)

Facility	Hours of temporary ED closures
All Saints Springhill Hospital	3,177.0 hours
Lillian Fraser Memorial Hospital	365.0 hours
North Cumberland Memorial Hospital	3,132.0 hours
South Cumberland Community Care Centre	2,511.0 hours
Total	9,185 hours

Public Consultation: All Saints Springhill Hospital

Date	Chair/Speakers	Attendance
November 13, 2018	All Saints Springhill Hospital Foundation Board of Directors Site Lead Physician Lead	8
Summary of discussion:		
<ul style="list-style-type: none"> Physician and family visited the facility and toured the town 		
Northern Zone Action (specific to Emergency Departments):		
<ul style="list-style-type: none"> Continued communication with physician re opportunities 		
Date	Chair/Speakers	Attendance
March 27, 2019	All Saints Springhill Hospital Foundation Board of Directors Site Lead	9
Summary of discussion:		
<ul style="list-style-type: none"> Board concerned with the number of CEC closures; one of the clinic's physicians will be leaving A physician from the United Kingdom will be starting to practice in the clinic in April and will be providing CEC coverage near the end of May. 		
Northern Zone Action (specific to Emergency Departments):		
<ul style="list-style-type: none"> Continued communication with physician opportunities 		

Public Consultation: Lillian Fraser Memorial Hospital

Date	Chair/Speakers	Attendance
September 5, 2018	Site Manager, Lillian Fraser and North Cumberland Memorial Hospitals	10
Summary of discussion:		
<ul style="list-style-type: none"> Meeting of LFMH Foundation; held in LFMH Boardroom Invited as a guest speaker to provide a general overview of facility operations - including ED coverage, staffing/resource challenges and upcoming infrastructure or equipment needs 		
Northern Zone Action (specific to Emergency Departments):		
<ul style="list-style-type: none"> Continue plans and strategies to maintain nursing recruitment and retention 		

Date	Chair/Speakers	Attendance
October 29, 2018	Site Manager, Lillian Fraser and North Cumberland Memorial Hospitals	45
Summary of discussion: <ul style="list-style-type: none"> • Meeting of LFMH Auxiliary; held at Hills of Annand-Roach Hall • Invited as a guest speaker to provide a general overview of facility operations- including ED coverage and 811 program and status update. Also included a Q&A session and upcoming equipment needs discussion 		
Northern Zone Action (specific to Emergency Departments): <ul style="list-style-type: none"> • Continue plans and strategies (e.g. incentives) to maintain nursing and other health care provider recruitment and retention • Equipment planning – ongoing 		

Public Consultation: North Cumberland Memorial Hospital

Date	Chair/Speakers	Attendance
June 21, 2018	Site Manager, Lillian Fraser and North Cumberland Memorial Hospitals	16
Summary of discussion: <ul style="list-style-type: none"> • Annual General Meeting of NCMH Foundation; held at Village Commission • Invited as a guest speaker to provide an update on New Facility status and general overview of current facility operations-including ED coverage, staffing/resource challenges and upcoming needs. 		
Northern Zone Action (specific to Emergency Departments): <ul style="list-style-type: none"> • Continue plans and strategies to maintain nursing recruitment and retention 		
Date	Chair/Speakers	Attendance
December 4, 2018	Site Manager, Lillian Fraser and North Cumberland Memorial Hospitals	22
Summary of discussion: <ul style="list-style-type: none"> • Meeting of NCMH Auxiliary; held in NCMH boardroom • Invited as a guest speaker to provide an update on New Facility status and general overview of facility operations- including ED coverage, staffing/resource challenges and upcoming needs for the inpatient unit 		
Northern Zone Action (specific to Emergency Departments): <ul style="list-style-type: none"> • Continue plans and strategies to maintain nursing recruitment and retention 		

Public Consultation: South Cumberland Memorial Hospital

Date	Chair/Speakers	Attendance
May 9, 2018	South Cumberland Community Care Centre Foundation Board of Directors Site Manager	6
Summary of discussion: <ul style="list-style-type: none"> • CEC closures continue to be a challenge 		
Northern Zone Action (specific to Emergency Departments): <ul style="list-style-type: none"> • Two locum physicians provide coverage on a scheduled, regular basis 		
Date	Chair/Speakers	Attendance
May 30, 2018	South Cumberland Community Care Centre Foundation Board of Directors Site Manager	7
Summary of discussion: <ul style="list-style-type: none"> • Discussion of RN Treat and Release Policy which defines eight procedures that an RN may undertake in the absence of a physician • Acknowledge the contributions of two physicians for their excellent locum coverage of the CEC 		
Northern Zone Action (specific to Emergency Departments): <ul style="list-style-type: none"> • Continue plans and strategies for physician and nursing recruitment and retention 		
Date	Chair/Speakers	Attendance
November 7, 2018	South Cumberland Community Care Centre Foundation Board of Directors Site Manager	6
Summary of discussion: <ul style="list-style-type: none"> • Two physicians have visited the Health Centre and the clinic and toured the area (from the United Kingdom and Vancouver) 		
Northern Zone Action (specific to Emergency Departments): <ul style="list-style-type: none"> • Continued communication with physician opportunities 		

EASTERN ZONE (3)

Facility	Hours of temporary ED closures
Buchanan Memorial Health Centre	29.5 hours
Eastern Memorial Hospital	5.0 hours
Glace Bay Health Care Facility	5,554.0 hours
Guysborough Memorial Hospital	96.0 hours
New Waterford Consolidated Hospital	621.0 hours
Northside General Hospital	1,232.0 hours
St. Anne Community & Nursing Care Centre	758.0 hours
Strait Richmond Hospital	906.0 hours
Victoria County Memorial Hospital	72.0 hours
Total	9,273.5 hours

Public Consultation: Buchanan Memorial Hospital

Date	Chair/Speakers	Attendance
March 1, 2019	Executive Director, Operations-Eastern Zone Buchanan Hospital Foundation Members Site Manager	10
Summary of discussion:		
<ul style="list-style-type: none"> Point of Care lab implementation, ED closures and staffing implications, ED physician coverage impacts and Emergency Health Service services 		
Eastern Zone Action (specific to Emergency Departments):		
<ul style="list-style-type: none"> Continued review of lab services changes and its impact to facility, physician resource planning, and nursing recruitment. 		

Public Consultation: Cape Breton Regional Municipality

Date	Chair/Speakers	Attendance
April 23, 2018	Health Services Director Emergency Program of Care – Eastern Zone ED Physicians (3) Medical Lead-Emergency Program of Care, Eastern Zone Director Integrated Health-Emergency Program of Care, Eastern Zone Health Services Manager, CB Regional Hospital	9
Summary of discussion:		
<ul style="list-style-type: none"> ED Coverage CBRM specifically - future planning, Cape Breton Regional Hospital space restrictions and potential regarding renovations required. 		
Eastern Zone Action (specific to Emergency Departments):		
<ul style="list-style-type: none"> Physician resources/ preferred new space vs renovations similar to Aberdeen's new ED, begin reviewing and plan development 		

Date	Chair/Speakers	Attendance
May 7, 2018	Health Services Director Emergency Program of Care – Eastern Zone Representative, Emergency Health Services	2
Summary of discussion: <ul style="list-style-type: none"> • ED closures in CBRM including staffing Implications, ED Coverage, impact • and potential mitigations Review impact to Emergency Health Services regarding potential workload and response to ED service coverage issues. 		
Eastern Zone Action (specific to Emergency Departments): <ul style="list-style-type: none"> • Commit to regular and ongoing discussions/updates 		

Public Consultation: Glace Bay Health Care Facility

Date	Chair/Speakers	Attendance
April 24, 2018	Health Services Director Emergency Program of Care – Eastern Zone Director Integrated Health-Emergency Program of Care, Eastern Zone Health Services Manager, Glace Bay Emergency Department ED Physicians Diagnostic Imaging and Laboratory Staff	8
Summary of discussion: <ul style="list-style-type: none"> • ED coverage CBRH and Glace Bay site: planning staff coverage changes because of physician resource challenges 		
Eastern Zone Action (specific to Emergency Departments): <ul style="list-style-type: none"> • Physician resources/ staff schedule changes where necessary/ review support for Nursing staff and impact to other services such as Lab and DI 		

Public Consultation: Guysborough Memorial Hospital

Date	Chair/Speakers	Attendance
April 19, 2018	Executive Medical Director – Eastern Zone Health Services Director Emergency Program of Care – Eastern Zone Facility Manager, Public Health Services Senior Director, Critical Care & Emergency Programs of Care Senior Medical Director, Emergency Program of Care Site Lead, Strait Richmond Hospital Guysborough Memorial Hospital Foundation Director, Integrated Health Rural Hospitals, Eastern Zone	8
Summary of discussion: <ul style="list-style-type: none"> • Guysborough Memorial Hospital ED coverage 		
Eastern Zone Action (specific to Emergency Departments): <ul style="list-style-type: none"> • Physician resources/ vacation coverage 		

Date	Chair/Speakers	Attendance
July 18, 2018	Guysborough Memorial Hospital Director, Integrated Health Rural Hospitals, Eastern Zone Guysborough Memorial Hospital Foundation Facility Manager, Public Health Services Career Connections Nova Scotia Physician Teleconference: Health Services Director Emergency Program of Care – Eastern Zone Senior Director, Critical Care & Emergency Programs of Care GMH Foundation NSHA Director, Public Affairs	10
Summary of discussion:		
<ul style="list-style-type: none"> ED Department coverage/ physician resources/ Emergency Health Services coverage/ Physician payment structure/ Licensure for Physician with College of Physicians & Surgeons 		
Eastern Zone Action (specific to Emergency Departments):		
<ul style="list-style-type: none"> Meeting notes sent to MLA for Guysborough-Eastern Shore-Tracadie and to the CAO, MODG 		

Public Consultation: Strait Richmond Hospital

Date	Chair/Speakers	Attendance
June 5, 2018	Senior's Group Strait Richmond Hospital Foundation President of the Atlantic Corporation of NS Site Lead, Riverdale Community Centre	10
Summary of discussion:		
<ul style="list-style-type: none"> An update provided on the Strait Richmond Hospital project Ambulatory Care and Emergency renovations 		
Eastern Zone Action (specific to Emergency Departments):		
<ul style="list-style-type: none"> Continue discussions and engagement 		
Date	Chair/Speakers	Attendance
June 22, 2018	Palliative Care Society MLA District, Cape Breton Richmond Site Lead (by Teleconference)	10
Summary of discussion:		
<ul style="list-style-type: none"> Palliative Care at Strait Richmond Hospital and palliative patients in the Emergency Department 		
Eastern Zone Action (specific to Emergency Departments):		
<ul style="list-style-type: none"> Ongoing communication and planning 		

Date	Chair/Speakers	Attendance
June 25, 2018	Council Members Strait Richmond Hospital Foundation Site Lead	15
Summary of discussion:		
<ul style="list-style-type: none"> • Strait Richmond Hospital project, development of Ambulatory Care Unit & Emergency renovations 		
Eastern Zone Action (specific to Emergency Departments):		
<ul style="list-style-type: none"> • Continue discussions and engagement 		

Public Consultation: Community Teleconference

Date	Chair/Speakers	Attendance
February 14, 2019	MLA District-Cape Breton-Richmond MLA, District-Inverness Director, Integrated Health Rural Hospitals, Eastern Zone Health Services Director Emergency Program of Care – Eastern Zone	5
Summary of discussion:		
<ul style="list-style-type: none"> • Meeting with Conservative MLAs re services at VCMH, Strait Richmond, ICMH and SHH • ED closures in Strait Richmond Hospital (SRH) • Physician and nursing recruitment • Palliative care issues and access at SRH • Home care support challenges locally (SRH) • Conversation and update on renovations to SRH (ED and ambulance care areas) 		
Eastern Zone Action (specific to Emergency Departments):		
<ul style="list-style-type: none"> • Continue discussions and engagement 		

Public Consultation: Victoria County Memorial Hospital

Date	Chair/Speakers	Attendance
March 5, 2019	Senior Director, Medical Affairs Site Lead, Strait Richmond Hospital Physician Victoria County Councilors Representative, Alderwood	8
Summary of discussion:		
<ul style="list-style-type: none"> • Updated on physician recruitment for the community 		
Eastern Zone Action (specific to Emergency Departments):		
<ul style="list-style-type: none"> • Continued communication with regards to physician and nursing resources • Continue plans and strategies to maintain nursing recruitment and retention 		

Date	Chair/Speakers	Attendance
March 7, 2019	President & CEO, NSHA Health Services Director Emergency Program of Care – Eastern Zone Victoria County Councilors Site Lead, Strait Richmond Hospital Faculty Manager, Victoria County Memorial Hospital Director, Integrated Health Rural Hospitals, Eastern Zone	7
Summary of discussion: <ul style="list-style-type: none"> • Physician recruitment • ED coverage • Cape Breton Redevelopment plans 		
Eastern Zone Action (specific to Emergency Departments): <ul style="list-style-type: none"> • Continued communication with regards to physician and nursing resources • Continue plans and strategies to maintain nursing recruitment and retention 		
Date	Chair/Speakers	Attendance
March 7, 2019	Health Services Director Emergency Program of Care – Eastern Zone Site Lead, Strait Richmond Hospital Director, Integrated Health Rural Hospitals, Eastern Zone President & CEO NSHA Chief, Public Engagement & Communications NSHA Director, Public Affairs Victoria County Councilors	20
Summary of discussion: <ul style="list-style-type: none"> • Discussion and presentation of service delivery changes including Point of Care testing; gave an opportunity to clear misconceptions • ED closures and staffing implications, ED coverage and physician recruitment • Overall services discussion for both Buchanan Memorial and Victoria Memorial Hospitals 		
Eastern Zone Action (specific to Emergency Departments): <ul style="list-style-type: none"> • Commitment to attend May 6, 2019 meeting to discuss concerns for the county/area and effects of CBRM reduction in services; NSHA attends by invite when available 		

Public Consultation: Board Meeting – Sydney

Date	Chair/Speakers	Attendance
March 26, 2019	NSHA Board of Directors	55
Summary of discussion: <ul style="list-style-type: none"> • The NSHA Board of Directors hosted this listening forum • The forum was an open discussion with no pre-planned agenda • There were multiple service areas and issues identified however, specific to emergency services and closures including physician recruitment and, request for reliable drop-in/walk-in services to avoid poor use of emergency departments. 		

CENTRAL ZONE (4)

Facility	Hours of temporary ED closures
Eastern Shore Memorial Hospital	3,654.5 hours
Musquodoboit Valley Memorial Hospital	508.5 hours
Twin Oaks Memorial Hospital	197.3 hours
Total	4,360.3 hours

Public Consultation: Eastern Shore Memorial Hospital

Date	Chair/Speakers	Attendance
July 5, 2018	Director, Primary Health Care & Family Practice, Central Zone Health Services Manager, Department of Family Medicine Acting Director, Tri Facilities (ESMH, TOMH, & MVMH) Community Health Board Coordinator, Patient and Public Engagement Senator Sheet Harbour Community Member	6
Summary of discussion: <ul style="list-style-type: none"> • Collaborative practice teams • ED closures and several other community topics. At this time, the Senator informed the group he was bringing a community group together to discuss ED closures in Sheet Harbour. He has brought volunteers together to form a committee to see where the community could be helpful to NSHA in keeping the ED open. • Discussion and questions around how a collaborative practice team would reduce closures to the ED in their community 		
Central Zone Action (specific to Emergency Departments): <ul style="list-style-type: none"> • The Senator will follow up with organizing meetings for ongoing discussion • Ongoing commitment to continued communication with the community 		
Date	Chair/Speakers	Attendance
August 17, 2018	Executive Director Operations-Central Zone Acting Director, Tri Facilities (ESMH, TOMH, & MVMH) & Health Services Manager of ESMH & HVL Senator Sheet Harbour Community Member	4
Summary of discussion: <ul style="list-style-type: none"> • Discussion of further understanding of the reasons behind the ED closures, focusing on staffing and the impacts on the community • Part of the series of meetings with the community (action item July 5) • Working on scheduling a follow up community meeting with several program areas of NSHA to be in attendance, organize the Sheet Harbour community group to attend the Dalhousie recruitment fair taking place in September 		
Central Zone Action (specific to Emergency Departments): <ul style="list-style-type: none"> • Continued communication with regards to physician and nursing resources • Continue plans and strategies to maintain nursing recruitment and retention 		

Date	Chair/Speakers	Attendance
September 25, 2018	Acting Director, Tri Facilities (ESMH, TOMH, & MVMH) & Health Services Manager of ESMH & HVL Quality Coordinator Sheet Harbour Community Member	3
Summary of discussion: <ul style="list-style-type: none"> • Discussion of further understanding of the reasons behind the ED closures, focusing on staffing and the impacts on the community 		
Central Zone Action (specific to Emergency Departments): <ul style="list-style-type: none"> • Opportunity to meet with the Senior Director, Emergency Program of Care offered 		
Date	Chair/Speakers	Attendance
November 26, 2018	Acting Director, Tri Facilities (ESMH, TOMH, & MVMH) & Health Services Manager of ESMH & HVL Quality Coordinator Sheet Harbour Community Member	3
Summary of discussion: <ul style="list-style-type: none"> • Discussion of further understanding of the reasons behind the ED closures, focusing on staffing and the impacts on the community 		
Central Zone Action (specific to Emergency Departments): <ul style="list-style-type: none"> • Ongoing communication as per July 5 		
Date	Chair/Speakers	Attendance
February 15, 2019	Acting Director, Tri Facilities (ESMH, TOMH, & MVMH) & Health Services Manager of ESMH & HVL Senior Director, Critical Care & Emergency Programs of Care Senator Sheet Harbour Community Members (4)	7
Summary of discussion: <ul style="list-style-type: none"> • Discussion of further understanding of the reasons behind the ED closures, focusing on staffing and the impacts on the community 		
Central Zone Action (specific to Emergency Departments): <ul style="list-style-type: none"> • Ongoing communication as per July 5 		

Public Consultation: Board Meeting – Windsor

Date	Chair/Speakers	Attendance
September 19, 2018	NSHA Board of Directors	20
Summary of discussion: <ul style="list-style-type: none"> • The NSHA Board of Directors hosted this listening forum • The forum was an open discussion with no pre-planned agenda • There were multiple service areas and issues identified however, specific to emergency services and closures including physician recruitment and, request for reliable drop-in/walk-in services to avoid poor use of emergency departments. 		

Appendix A: Temporary ED closures by date and hours closed

Reporting period: April 1, 2018 – March 31, 2019

ZONE 1 (WESTERN)

Annapolis Community Health Centre		
Month	Date	Hours closed
April	2018-04-12	12.0
	2018-04-23	12.0
May	2018-05-01	12.0
	2018-05-03	8.0
	2018-05-07	12.0
	2018-05-14	12.0
	2018-05-25	6.0
	2018-05-26	6.0
June	2018-06-21	12.0
	2018-06-28	12.0
October	2018-10-19	12.0
November	2018-11-04	12.0
	2018-11-05	12.0
	2018-11-16	11.0
	2018-11-28	12.0
	2018-11-30	12.0
December	2018-12-01	7.0
	2018-12-07	12.0
	2018-12-16	7.7
	2018-12-31	12.0
January	2019-01-21	12.0
March	2019-03-09	12.0
	2019-03-22	12.0
	2019-03-29	12.0
Total		261.7

Digby General Hospital		
Month	Date	Hours closed
April	2018-04-15	11.0
	2018-04-16	14.0
	2018-04-24	26.0
	2018-04-29	26.0
	2018-04-30	6.0
May	2018-05-01	8.0
	2018-05-09	14.0
June	2018-06-07	14.0
	2018-06-15	10.5
	2018-06-17	26.0
	2018-06-19	14.0
	2018-06-21	14.0
	2018-06-22	14.0
July	2018-07-17	14.0
August	2018-08-02	14.0
	2018-08-07	14.0
	2018-08-18	12.0
	2018-08-21	14.0
	2018-08-23	14.0
	2018-08-24	26.0
September	2018-08-29	14.0
	2018-09-04	14.0
	2018-09-19	26.0
	2018-09-21	14.0
	2018-09-29	18.0
October	2018-09-30	16.0
	2018-10-01	8.0
	2018-10-03	14.0
	2018-10-05	14.0
	2018-10-22	14.0
	2018-10-24	14.0
November	2018-10-31	6.0
	2018-11-01	8.0
	2018-11-07	16.0
	2018-11-22	8.5
	2018-11-26	14.0
	2018-11-28	14.0
	2018-11-29	10.0

Month	Date	Hours closed
December	2018-12-03	12.0
	2018-12-04	14.0
	2018-12-06	14.0
	2018-12-07	14.0
	2018-12-13	26.0
	2018-12-18	14.0
	2018-12-22	26.0
	2018-12-23	24.0
	2018-12-24	14.0
	2018-12-26	14.0
	2018-12-27	14.0
	2018-12-28	14.0
	2018-12-29	24.0
	January	2019-01-04
2019-01-11		14.0
2019-01-23		16.0
2019-01-28		4.3
2019-01-29		26.0
February	2019-02-02	14.0
	2019-02-03	14.0
	2019-02-16	48.0
	2019-02-18	14.0
	2019-02-22	5.5
	2019-02-26	14.0
March	2019-03-01	14.0
	2019-03-03	24.0
	2019-03-04	24.0
	2019-03-05	26.0
	2019-03-07	14.0
	2019-03-08	14.0
	2019-03-28	3.5
	2019-03-30	26.0
	Total	

Fishermen's Memorial Hospital		
Month	Date	Hours closed
April	2018-04-29	5.5
May	2018-05-12	8.5
June	2018-06-07	7.5
	2018-06-30	12.0
July	2018-07-21	5.5
August	2018-08-01	8.5
	2018-08-04	15.0
October	2018-10-28	8.5
December	2018-12-15	8.5
	2018-12-20	8.5
	2018-12-22	8.5
	2018-12-23	8.5
	2018-12-25	15.0
February	2019-02-08	15.0
	2019-02-09	9.0
	2019-02-10	8.0
	2019-02-24	8.0
	2019-02-25	8.0
March	2019-03-03	8.0
	2019-03-07	8.5
	2019-03-08	8.5
	2019-03-09	8.5
	2019-03-13	8.5
	2019-03-14	8.5
	2019-03-28	8.0
	2019-03-30	15.5
2019-03-31	15.5	
Total		257.5

Roseway Hospital		
Month	Date	Hours closed
April	2018-04-01	22.0
	2018-04-02	15.0
	2018-04-14	14.0
	2018-04-22	14.0
	2018-04-27	26.0
	2018-04-28	14.0
May	2018-05-11	16.0
	2018-05-12	14.0
	2018-05-13	24.0
	2018-05-16	26.0
	2018-05-19	26.0
June	2018-06-01	24.0
	2018-06-02	14.0
	2018-06-06	14.0
	2018-06-07	14.0
	2018-06-15	14.0
	2018-06-17	26.0
	2018-06-24	14.0
July	2018-07-04	12.0
	2018-07-06	26.0
	2018-07-07	14.0
	2018-07-11	13.0
	2018-07-22	14.0
August	2018-07-27	12.0
	2018-08-01	14.0
	2018-08-02	14.0
	2018-08-03	24.0
	2018-08-04	14.0
	2018-08-05	24.0
	2018-08-06	14.0
	2018-08-08	12.0
	2018-08-09	26.0
	2018-08-11	14.0
	2018-08-12	14.0
	2018-08-14	14.0
	2018-08-18	14.0
	2018-08-19	14.0
2018-08-22	14.0	
2018-08-31	14.0	
September	2018-09-02	26.0
	2018-09-30	11.0

Month	Date	Hours closed
October	2018-10-12	11.0
	2018-10-16	14.0
	2018-10-27	14.0
	2018-10-31	18.0
November	2018-11-01	22.0
	2018-11-02	14.0
	2018-11-03	14.0
	2018-11-04	14.0
	2018-11-08	14.0
	2018-11-10	14.0
	2018-11-11	14.0
December	2018-11-30	18.0
	2018-12-01	8.0
	2018-12-06	14.0
	2018-12-15	26.0
	2018-12-19	14.0
	2018-12-23	14.0
	2018-12-24	24.0
	2018-12-25	24.0
	2018-12-30	14.0
	2018-12-31	8.0
January	2019-01-01	32.0
	2019-01-04	26.0
	2019-01-06	25.0
	2019-01-13	14.0
	2019-01-14	24.0
	2019-01-20	14.0
	2019-01-25	12.5
February	2019-01-27	24.0
	2019-01-31	7.0
	2019-02-01	8.0
	2019-02-02	26.0
	2019-02-03	24.0
	2019-02-08	14.0
	2019-02-09	14.0
	2019-02-10	24.0
	2019-02-11	14.0
	2019-02-16	14.0
	2019-02-19	14.0
	2019-02-21	14.0
	2019-02-22	26.0
2019-02-24	14.0	

Month	Date	Hours closed
February	2019-02-26	6.0
	2019-02-27	14.0
March	2019-03-04	24.0
	2019-03-05	14.0
	2019-03-09	14.0
	2019-03-11	14.0
	2019-03-12	14.0
	2019-03-13	12.0
	2019-03-14	24.0
	2019-03-15	2.0
	2019-03-16	14.0
	2019-03-17	24.0
	2019-03-18	24.0
	2019-03-19	15.0
	2019-03-23	14.0
	2019-03-24	24.0
	2019-03-25	12.0
	2019-03-29	14.0
	2019-03-30	14.0
	2019-03-31	16.0
Total		1,719.5

Soldiers' Memorial Hospital		
Month	Date	Hours closed
April	2018-04-07	6.0
July	2018-07-30	14.0
August	2018-08-11	17.0
October	2018-10-05	12.0
	2018-10-21	12.5
January	2019-01-20	16.0
March	2019-03-19	12.0
	2019-03-20	11.0
Total		100.5

ZONE 2 (NORTHERN)

All Saints Springhill Hospital			
Month	Date	Hours closed	
April	2018-04-01	12.0	
	2018-04-02	12.0	
	2018-04-03	12.0	
	2018-04-05	12.0	
	2018-04-06	12.0	
	2018-04-07	12.0	
	2018-04-08	12.0	
	2018-04-11	12.0	
	2018-04-12	12.0	
	2018-04-17	12.0	
	2018-04-20	12.0	
	2018-04-21	12.0	
	2018-04-22	12.0	
	2018-04-24	12.0	
	2018-04-26	12.0	
	2018-04-28	12.0	
	2018-04-29	12.0	
	May	2018-05-03	12.0
		2018-05-05	12.0
		2018-05-06	12.0
2018-05-09		12.0	
2018-05-18		12.0	
2018-05-19		12.0	
2018-05-20		12.0	
2018-05-21		12.0	
2018-05-23		12.0	
2018-05-24		12.0	
2018-05-26		12.0	
2018-05-27	12.0		
2018-05-28	12.0		
2018-05-29	12.0		
2018-05-31	12.0		

Month	Date	Hours closed
June	2018-06-01	12.0
	2018-06-04	12.0
	2018-06-07	12.0
	2018-06-10	12.0
	2018-06-11	12.0
	2018-06-12	12.0
	2018-06-16	12.0
	2018-06-17	12.0
	2018-06-20	12.0
	2018-06-21	12.0
	2018-06-23	12.0
	2018-06-24	12.0
	2018-06-25	12.0
	2018-06-28	12.0
	2018-06-29	12.0
	2018-06-30	12.0
July	2018-07-01	15.0
	2018-07-02	12.0
	2018-07-04	12.0
	2018-07-05	12.0
	2018-07-06	12.0
	2018-07-09	12.0
	2018-07-10	12.0
	2018-07-13	12.0
	2018-07-14	12.0
	2018-07-15	12.0
	2018-07-16	12.0
	2018-07-17	12.0
	2018-07-18	12.0
	2018-07-20	24.0
	2018-07-21	12.0
	2018-07-22	12.0
2018-07-24	12.0	
2018-07-25	12.0	
2018-07-26	12.0	
2018-07-27	24.0	
2018-07-28	12.0	
2018-07-29	12.0	
2018-07-30	12.0	

Month	Date	Hours closed
August	2018-08-01	12.0
	2018-08-02	12.0
	2018-08-03	12.0
	2018-08-07	12.0
	2018-08-09	12.0
	2018-08-10	12.0
	2018-08-11	12.0
	2018-08-14	12.0
	2018-08-15	24.0
	2018-08-16	12.0
	2018-08-17	12.0
	2018-08-18	12.0
	2018-08-22	12.0
	2018-08-23	12.0
	2018-08-25	12.0
	2018-08-27	12.0
2018-08-29	12.0	
2018-08-30	12.0	
2018-08-31	12.0	
September	2018-09-01	12.0
	2018-09-02	12.0
	2018-09-03	12.0
	2018-09-04	12.0
	2018-09-06	12.0
	2018-09-07	12.0
	2018-09-08	12.0
	2018-09-09	12.0
	2018-09-10	12.0
	2018-09-12	12.0
	2018-09-13	12.0
	2018-09-15	12.0
	2018-09-16	12.0
	2018-09-17	12.0
2018-09-18	12.0	
2018-09-20	12.0	
2018-09-21	12.0	
2018-09-22	12.0	
2018-09-23	12.0	
2018-09-24	12.0	
2018-09-26	12.0	
2018-09-27	12.0	
2018-09-28	24.0	
2018-09-29	12.0	
2018-09-30	12.0	

Month	Date	Hours closed
October	2018-10-01	12.0
	2018-10-03	12.0
	2018-10-04	12.0
	2018-10-05	12.0
	2018-10-07	12.0
	2018-10-08	12.0
	2018-10-09	12.0
	2018-10-12	12.0
	2018-10-13	12.0
	2018-10-16	12.0
	2018-10-17	12.0
	2018-10-18	12.0
	2018-10-19	24.0
	2018-10-20	24.0
	2018-10-21	12.0
	2018-10-23	12.0
	2018-10-25	12.0
	2018-10-26	15.0
	2018-10-27	12.0
	2018-10-30	12.0
	2018-10-31	12.0
November	2018-11-01	12.0
	2018-11-02	12.0
	2018-11-05	12.0
	2018-11-08	12.0
	2018-11-09	12.0
	2018-11-10	12.0
	2018-11-11	12.0
	2018-11-12	12.0
	2018-11-14	12.0
	2018-11-15	12.0
	2018-11-17	12.0
	2018-11-19	12.0
	2018-11-20	12.0
	2018-11-22	12.0
	2018-11-23	12.0
	2018-11-24	24.0
	2018-11-25	12.0
	2018-11-26	12.0
	2018-11-27	12.0
2018-11-28	12.0	
2018-11-29	12.0	
2018-11-30	12.0	

Month	Date	Hours closed
December	2018-12-01	12.0
	2018-12-02	12.0
	2018-12-03	12.0
	2018-12-04	12.0
	2018-12-05	12.0
	2018-12-06	12.0
	2018-12-07	12.0
	2018-12-08	24.0
	2018-12-09	12.0
	2018-12-10	12.0
	2018-12-12	12.0
	2018-12-14	12.0
	2018-12-15	24.0
	2018-12-16	12.0
	2018-12-17	12.0
	2018-12-19	12.0
	2018-12-21	12.0
	2018-12-22	12.0
	2018-12-23	12.0
	2018-12-24	12.0
	2018-12-25	12.0
	2018-12-27	12.0
	2018-12-28	12.0
2018-12-29	12.0	
2018-12-30	15.0	
2018-12-31	16.0	

Month	Date	Hours closed	
January	2019-01-01	8.0	
	2019-01-02	23.0	
	2019-01-03	12.0	
	2019-01-04	12.0	
	2019-01-07	12.0	
	2019-01-08	12.0	
	2019-01-10	12.0	
	2019-01-11	12.0	
	2019-01-12	12.0	
	2019-01-14	12.0	
	2019-01-15	12.0	
	2019-01-16	12.0	
	2019-01-18	12.0	
	2019-01-19	12.0	
	2019-01-20	12.0	
	2019-01-21	12.0	
	2019-01-22	12.0	
	2019-01-23	12.0	
	2019-01-24	12.0	
	2019-01-26	12.0	
	2019-01-27	12.0	
	2019-01-28	12.0	
	2019-01-30	12.0	
	2019-01-31	12.0	
	February	2019-02-01	12.0
		2019-02-04	12.0
		2019-02-05	12.0
		2019-02-07	12.0
		2019-02-08	12.0
		2019-02-10	12.0
		2019-02-11	12.0
2019-02-13		12.0	
2019-02-14		12.0	
2019-02-15		12.0	
2019-02-16		12.0	
2019-02-17		13.0	
2019-02-19		12.0	
2019-02-20		24.0	
2019-02-21		12.0	
2019-02-22		12.0	
2019-02-23		12.0	
2019-02-24	12.0		
2019-02-25	12.0		
2019-02-27	12.0		

Month	Date	Hours closed
March	2019-03-01	12.0
	2019-03-04	12.0
	2019-03-05	12.0
	2019-03-07	12.0
	2019-03-08	24.0
	2019-03-09	12.0
	2019-03-10	12.0
	2019-03-12	12.0
	2019-03-14	12.0
	2019-03-15	12.0
	2019-03-16	12.0
	2019-03-17	12.0
	2019-03-19	12.0
	2019-03-20	12.0
	2019-03-23	24.0
	2019-03-24	12.0
	2019-03-25	12.0
	2019-03-26	12.0
	2019-03-27	12.0
	2019-03-28	12.0
2019-03-29	12.0	
2019-03-30	12.0	
2019-03-31	12.0	
Total		3,177.0

Lillian Fraser Memorial Hospital		
Month	Date	Hours closed
April	2018-04-01	12.0
May	2018-05-14	7.0
	2018-05-16	7.0
	2018-05-19	12.0
	2018-05-20	12.0
June	2018-06-02	11.0
	2018-06-03	11.0
	2018-06-05	8.0
August	2018-08-31	1.0
September	2018-09-01	12.0
	2018-09-02	12.0
	2018-09-22	12.0
	2018-09-23	12.0
October	2018-10-26	8.0

Month	Date	Hours closed
November	2018-11-08	8.0
	2018-11-09	8.0
	2018-11-10	12.0
	2018-11-11	12.0
	2018-11-17	12.0
	2018-11-18	12.0
December	2018-12-22	8.0
	2018-12-28	8.0
	2018-12-29	12.0
	2018-12-30	12.0
January	2019-01-25	8.0
February	2019-02-02	12.0
	2019-02-03	12.0
	2019-02-07	4.0
	2019-02-16	12.0
	2019-02-17	12.0
March	2019-03-02	12.0
	2019-03-03	12.0
	2019-03-15	8.0
	2019-03-16	12.0
	2019-03-17	12.0
	2019-03-19	8.0
Total		365.0

North Cumberland Memorial Hospital			
Month	Date	Hours closed	
April	2018-04-01	12.0	
	2018-04-02	12.0	
	2018-04-03	12.0	
	2018-04-04	5.0	
	2018-04-05	4.0	
	2018-04-06	12.0	
	2018-04-09	12.0	
	2018-04-10	12.0	
	2018-04-11	12.0	
	2018-04-13	12.0	
	2018-04-14	12.0	
	2018-04-15	12.0	
	2018-04-16	12.0	
	2018-04-17	12.0	
	2018-04-18	4.0	
	2018-04-19	12.0	
	2018-04-20	12.0	
	2018-04-21	12.0	
	2018-04-23	12.0	
	2018-04-24	12.0	
	2018-04-25	12.0	
	2018-04-27	12.0	
	2018-04-30	12.0	
	May	2018-05-01	12.0
		2018-05-02	4.0
		2018-05-03	12.0
		2018-05-04	12.0
		2018-05-07	12.0
		2018-05-08	12.0
		2018-05-09	12.0
2018-05-11		12.0	
2018-05-14		12.0	
2018-05-15		12.0	
2018-05-16		12.0	
2018-05-18		12.0	
2018-05-19		12.0	
2018-05-20		12.0	
2018-05-22	12.0		
2018-05-23	12.0		
2018-05-25	12.0		
2018-05-26	12.0		

Month	Date	Hours closed
May	2018-05-27	12.0
	2018-05-28	12.0
	2018-05-29	12.0
	2018-05-30	12.0
June	2018-06-01	12.0
	2018-06-02	12.0
	2018-06-03	12.0
	2018-06-04	12.0
	2018-06-05	12.0
	2018-06-06	4.0
	2018-06-08	12.0
	2018-06-11	12.0
	2018-06-12	12.0
	2018-06-13	4.0
	2018-06-15	12.0
	2018-06-16	12.0
	2018-06-17	12.0
	2018-06-18	12.0
	2018-06-19	12.0
	2018-06-20	4.0
	2018-06-23	12.0
	2018-06-26	12.0
	2018-06-27	4.0
	2018-06-29	12.0
2018-06-30	12.0	

Month	Date	Hours closed
July	2018-07-01	12.0
	2018-07-02	12.0
	2018-07-03	12.0
	2018-07-04	4.0
	2018-07-06	12.0
	2018-07-07	12.0
	2018-07-08	12.0
	2018-07-09	12.0
	2018-07-10	12.0
	2018-07-11	4.0
	2018-07-12	12.0
	2018-07-13	12.0
	2018-07-14	12.0
	2018-07-15	12.0
	2018-07-16	12.0
	2018-07-17	12.0
	2018-07-18	12.0
	2018-07-19	4.0
	2018-07-20	12.0
	2018-07-21	12.0
	2018-07-22	12.0
	2018-07-23	12.0
	2018-07-24	12.0
	2018-07-25	12.0
	2018-07-27	12.0
	2018-07-28	12.0
	2018-07-29	12.0
	2018-07-30	12.0
	2018-07-31	12.0

Month	Date	Hours closed
August	2018-08-01	12.0
	2018-08-03	12.0
	2018-08-05	12.0
	2018-08-06	12.0
	2018-08-07	12.0
	2018-08-08	4.0
	2018-08-09	12.0
	2018-08-10	12.0
	2018-08-11	12.0
	2018-08-13	12.0
	2018-08-14	12.0
	2018-08-15	12.0
	2018-08-16	4.0
	2018-08-17	12.0
	2018-08-18	12.0
	2018-08-19	12.0
	2018-08-20	12.0
	2018-08-21	12.0
	2018-08-22	12.0
	2018-08-23	4.0
	2018-08-24	12.0
	2018-08-25	12.0
	2018-08-26	12.0
	2018-08-28	12.0
	2018-08-29	4.0
	2018-08-30	4.0
	2018-08-31	12.0

Month	Date	Hours closed
September	2018-09-01	12.0
	2018-09-02	12.0
	2018-09-03	12.0
	2018-09-04	12.0
	2018-09-05	4.0
	2018-09-06	4.0
	2018-09-07	12.0
	2018-09-08	12.0
	2018-09-09	12.0
	2018-09-10	12.0
	2018-09-11	12.0
	2018-09-12	4.0
	2018-09-13	12.0
	2018-09-14	12.0
	2018-09-15	12.0
	2018-09-18	12.0
	2018-09-19	4.0
	2018-09-20	4.0
	2018-09-21	12.0
	2018-09-26	12.0
	2018-09-28	12.0
	2018-09-29	12.0
	2018-09-30	12.0

Month	Date	Hours closed
October	2018-10-01	12.0
	2018-10-02	12.0
	2018-10-03	12.0
	2018-10-04	12.0
	2018-10-06	12.0
	2018-10-07	12.0
	2018-10-08	12.0
	2018-10-09	12.0
	2018-10-10	12.0
	2018-10-11	4.0
	2018-10-12	12.0
	2018-10-13	12.0
	2018-10-14	12.0
	2018-10-16	12.0
	2018-10-17	12.0
	2018-10-18	4.0
	2018-10-19	12.0
	2018-10-23	12.0
	2018-10-24	12.0
	2018-10-25	4.0
	2018-10-26	12.0
2018-10-27	12.0	
2018-10-28	12.0	
2018-10-30	12.0	
2018-10-31	12.0	

Month	Date	Hours closed
November	2018-11-01	4.0
	2018-11-02	12.0
	2018-11-03	12.0
	2018-11-04	12.0
	2018-11-06	12.0
	2018-11-07	12.0
	2018-11-08	4.0
	2018-11-09	12.0
	2018-11-10	12.0
	2018-11-11	12.0
	2018-11-13	12.0
	2018-11-14	12.0
	2018-11-15	12.0
	2018-11-16	12.0
	2018-11-20	12.0
	2018-11-21	12.0
	2018-11-22	4.0
	2018-11-23	12.0
	2018-11-25	12.0
	2018-11-27	12.0
2018-11-28	12.0	
2018-11-29	12.0	
2018-11-30	12.0	

Month	Date	Hours closed
December	2018-12-01	12.0
	2018-12-02	12.0
	2018-12-04	12.0
	2018-12-05	12.0
	2018-12-06	12.0
	2018-12-07	12.0
	2018-12-08	12.0
	2018-12-09	12.0
	2018-12-11	12.0
	2018-12-12	12.0
	2018-12-13	4.0
	2018-12-14	12.0
	2018-12-16	12.0
	2018-12-17	4.0
	2018-12-18	12.0
	2018-12-19	12.0
	2018-12-20	12.0
	2018-12-23	12.0
	2018-12-24	4.0
	2018-12-25	12.0
	2018-12-26	12.0
	2018-12-27	12.0
	2018-12-28	12.0
	2018-12-31	4.0
January	2019-01-01	12.0
	2019-01-02	12.0
	2019-01-03	12.0
	2019-01-04	12.0
	2019-01-05	12.0
	2019-01-06	12.0
	2019-01-08	12.0
	2019-01-09	12.0
	2019-01-10	12.0
	2019-01-14	12.0
	2019-01-15	12.0
	2019-01-19	12.0
	2019-01-20	12.0
	2019-01-24	12.0
	2019-01-25	12.0
	2019-01-26	12.0
	2019-01-27	12.0
2019-01-30	4.0	
2019-01-31	12.0	

Month	Date	Hours closed
February	2019-02-01	12.0
	2019-02-02	12.0
	2019-02-03	12.0
	2019-02-05	12.0
	2019-02-06	12.0
	2019-02-07	12.0
	2019-02-08	12.0
	2019-02-09	12.0
	2019-02-10	12.0
	2019-02-12	12.0
	2019-02-13	12.0
	2019-02-14	12.0
	2019-02-15	12.0
	2019-02-16	12.0
	2019-02-17	12.0
	2019-02-19	12.0
	2019-02-20	12.0
	2019-02-21	12.0
	2019-02-22	12.0
	2019-02-25	12.0
2019-02-26	12.0	
2019-02-27	12.0	
2019-02-28	12.0	

Month	Date	Hours closed
March	2019-03-01	12.0
	2019-03-02	12.0
	2019-03-04	3.0
	2019-03-05	12.0
	2019-03-06	12.0
	2019-03-07	12.0
	2019-03-10	12.0
	2019-03-12	12.0
	2019-03-13	12.0
	2019-03-14	12.0
	2019-03-16	12.0
	2019-03-17	12.0
	2019-03-18	12.0
	2019-03-19	12.0
	2019-03-20	12.0
	2019-03-21	12.0
	2019-03-22	12.0
	2019-03-23	12.0
	2019-03-24	12.0
	2019-03-26	12.0
2019-03-27	12.0	
2019-03-28	12.0	
2019-03-29	12.0	
2019-03-30	12.0	
Total		3,132.0

South Cumberland Community Care Centre		
Month	Date	Hours closed
April	2018-04-01	12.0
	2018-04-02	12.0
	2018-04-03	12.0
	2018-04-04	12.0
	2018-04-06	12.0
	2018-04-08	12.0
	2018-04-09	12.0
	2018-04-15	12.0
	2018-04-16	12.0
	2018-04-22	12.0
	2018-04-23	12.0
	2018-04-24	12.0
	2018-04-25	12.0
	2018-04-28	12.0
	2018-04-29	12.0
	2018-04-30	12.0

Month	Date	Hours closed
May	2018-05-01	12.0
	2018-05-02	12.0
	2018-05-03	12.0
	2018-05-06	12.0
	2018-05-07	12.0
	2018-05-13	12.0
	2018-05-14	12.0
	2018-05-15	12.0
	2018-05-16	12.0
	2018-05-17	12.0
	2018-05-20	12.0
	2018-05-21	12.0
	2018-05-22	12.0
	2018-05-23	12.0
	2018-05-25	12.0
	2018-05-26	12.0
	2018-05-27	12.0
	2018-05-28	12.0
	2018-05-29	12.0
	2018-05-30	12.0
2018-05-31	12.0	
June	2018-06-01	12.0
	2018-06-04	12.0
	2018-06-10	12.0
	2018-06-11	12.0
	2018-06-12	12.0
	2018-06-13	12.0
	2018-06-14	12.0
	2018-06-17	12.0
2018-06-18	12.0	
2018-06-19	12.0	
2018-06-20	12.0	
2018-06-23	12.0	
2018-06-24	12.0	
2018-06-25	12.0	
2018-06-26	12.0	
2018-06-27	12.0	
2018-06-28	12.0	

Month	Date	Hours closed
July	2018-07-01	12.0
	2018-07-02	12.0
	2018-07-08	12.0
	2018-07-09	12.0
	2018-07-10	12.0
	2018-07-11	12.0
	2018-07-13	12.0
	2018-07-14	12.0
	2018-07-15	12.0
	2018-07-16	12.0
	2018-07-17	12.0
	2018-07-18	12.0
	2018-07-19	12.0
	2018-07-20	12.0
	2018-07-23	12.0
	2018-07-24	12.0
	2018-07-25	12.0
	2018-07-26	12.0
	2018-07-29	12.0
	2018-07-30	12.0
August	2018-08-07	12.0
	2018-08-08	12.0
	2018-08-09	12.0
	2018-08-12	12.0
	2018-08-13	12.0
	2018-08-14	12.0
	2018-08-15	12.0
	2018-08-18	12.0
	2018-08-19	12.0
	2018-08-20	12.0
	2018-08-21	12.0
	2018-08-22	12.0
	2018-08-23	12.0
	2018-08-26	12.0
2018-08-27	12.0	

Month	Date	Hours closed
September	2018-09-02	12.0
	2018-09-03	12.0
	2018-09-04	12.0
	2018-09-05	12.0
	2018-09-06	12.0
	2018-09-19	12.0
	2018-09-20	12.0
	2018-09-23	12.0
	2018-09-24	12.0
	2018-09-30	12.0
October	2018-10-01	12.0
	2018-10-02	12.0
	2018-10-03	12.0
	2018-10-05	12.0
	2018-10-08	12.0
	2018-10-09	12.0
	2018-10-10	12.0
	2018-10-12	12.0
	2018-10-14	12.0
	2018-10-15	12.0
	2018-10-16	12.0
	2018-10-17	12.0
	2018-10-18	12.0
	2018-10-21	12.0
	2018-10-22	12.0
	2018-10-28	12.0
	2018-10-29	12.0
	2018-10-30	12.0
	2018-10-31	12.0
November	2018-11-01	12.0
	2018-11-05	12.0
	2018-11-06	12.0
	2018-11-07	12.0
	2018-11-08	12.0
	2018-11-11	12.0
	2018-11-13	12.0
	2018-11-16	12.0
	2018-11-17	12.0
	2018-11-18	12.0
	2018-11-19	12.0
	2018-11-23	12.0
	2018-11-24	12.0
	2018-11-25	12.0

Month	Date	Hours closed	
December	2018-12-01	12.0	
	2018-12-02	12.0	
	2018-12-03	12.0	
	2018-12-04	12.0	
	2018-12-05	12.0	
	2018-12-08	12.0	
	2018-12-09	12.0	
	2018-12-10	12.0	
	2018-12-11	12.0	
	2018-12-13	12.0	
	2018-12-14	12.0	
	2018-12-15	12.0	
	2018-12-16	12.0	
	2018-12-17	12.0	
	2018-12-21	12.0	
	2018-12-22	12.0	
	2018-12-23	12.0	
	2018-12-24	12.0	
	2018-12-25	12.0	
	2018-12-26	12.0	
	2018-12-27	12.0	
	2018-12-28	12.0	
	2018-12-29	12.0	
	2018-12-30	12.0	
	January	2019-01-01	12.0
		2019-01-02	12.0
		2019-01-05	12.0
		2019-01-06	12.0
		2019-01-07	12.0
		2019-01-08	12.0
2019-01-09		12.0	
2019-01-10		12.0	
2019-01-14		12.0	
2019-01-20		12.0	
2019-01-21		12.0	
2019-01-22		12.0	
2019-01-23		12.0	
2019-01-27		12.0	
2019-01-28		12.0	
2019-01-29	12.0		
2019-01-30	12.0		

Month	Date	Hours closed	
February	2019-02-02	12.0	
	2019-02-03	12.0	
	2019-02-04	12.0	
	2019-02-05	12.0	
	2019-02-06	12.0	
	2019-02-10	12.0	
	2019-02-11	12.0	
	2019-02-17	12.0	
	2019-02-18	12.0	
	2019-02-19	12.0	
	2019-02-20	12.0	
	2019-02-21	12.0	
	2019-02-24	12.0	
	2019-02-25	12.0	
	2019-02-26	12.0	
	2019-02-27	12.0	
	March	2019-03-02	3.0
		2019-03-03	12.0
		2019-03-04	12.0
		2019-03-05	12.0
		2019-03-07	12.0
		2019-03-08	12.0
		2019-03-09	12.0
		2019-03-10	12.0
		2019-03-11	12.0
		2019-03-15	12.0
		2019-03-16	12.0
2019-03-17		12.0	
2019-03-18		12.0	
2019-03-19	12.0		
2019-03-20	12.0		
2019-03-21	12.0		
2019-03-24	12.0		
2019-03-25	12.0		
2019-03-26	12.0		
2019-03-27	12.0		
2019-03-31	12.0		
Total		2,511.0	

ZONE 3 (EASTERN)

Buchanan Memorial Health Centre		
Month	Date	Hours closed
February	2019-02-15	1.5
March	2019-03-05	14.0
	2019-03-07	14.0
Total		29.5

Eastern Memorial Hospital		
Month	Date	Hours closed
March	2019-03-12	5.0
Total		5.0

Glace Bay Health Care Facility		
Month	Date	Hours closed
April	2018-04-01	24.0
	2018-04-02	25.0
	2018-04-03	16.0
	2018-04-08	16.0
	2018-04-10	16.0
	2018-04-11	16.0
	2018-04-19	16.0
	2018-04-21	25.0
	2018-04-22	24.0
	2018-04-26	16.0

Month	Date	Hours closed
May	2018-05-01	16.0
	2018-05-02	16.0
	2018-05-03	16.0
	2018-05-06	25.0
	2018-05-08	15.0
	2018-05-12	25.0
	2018-05-13	24.0
	2018-05-14	24.0
	2018-05-15	15.0
	2018-05-16	15.0
	2018-05-17	24.0
	2018-05-18	24.0
	2018-05-19	24.0
	2018-05-20	15.0
	2018-05-24	39.0
	2018-05-26	15.0
	2018-05-27	15.0
	2018-05-28	15.0
	2018-05-29	15.0
	June	2018-06-01
2018-06-02		24.0
2018-06-03		24.0
2018-06-04		24.0
2018-06-06		15.0
2018-06-07		15.0
2018-06-10		26.0
2018-06-16		26.0
2018-06-17		24.0
2018-06-18		15.0
2018-06-23		15.0
2018-06-24		15.0
2018-06-25		15.0
2018-06-28		26.0
2018-06-29		24.0
2018-06-30	17.0	

Month	Date	Hours closed
July	2018-07-01	31.0
	2018-07-02	15.0
	2018-07-03	15.0
	2018-07-05	15.0
	2018-07-07	15.0
	2018-07-08	15.0
	2018-07-09	15.0
	2018-07-10	15.0
	2018-07-11	15.0
	2018-07-12	15.0
	2018-07-13	15.0
	2018-07-14	15.0
	2018-07-15	24.0
	2018-07-16	15.0
	2018-07-17	24.0
	2018-07-18	24.0
	2018-07-21	26.0
	2018-07-22	15.0
	2018-07-23	15.0
	2018-07-26	15.0
2018-07-28	26.0	
2018-07-29	15.0	
2018-07-30	24.0	
August	2018-08-14	15.0
	2018-08-15	15.0
	2018-08-16	15.0
	2018-08-17	15.0
	2018-08-18	15.0
	2018-08-19	15.0
	2018-08-20	15.0
	2018-08-21	15.0
	2018-08-22	15.0
	2018-08-23	15.0

Month	Date	Hours closed
September	2018-09-03	15.0
	2018-09-06	15.0
	2018-09-07	15.0
	2018-09-08	15.0
	2018-09-09	15.0
	2018-09-10	15.0
	2018-09-11	15.0
	2018-09-12	15.0
	2018-09-13	15.0
	2018-09-14	15.0
	2018-09-15	15.0
	2018-09-16	24.0
	2018-09-17	15.0
	2018-09-18	15.0
	2018-09-19	15.0
	2018-09-20	15.0
	2018-09-21	24.0
	2018-09-22	24.0
	2018-09-23	24.0
	2018-09-24	15.0
2018-09-27	15.0	
2018-09-28	15.0	
2018-09-29	24.0	
2018-09-30	24.0	

Month	Date	Hours closed
October	2018-10-01	15.0
	2018-10-02	15.0
	2018-10-03	15.0
	2018-10-04	24.0
	2018-10-05	24.0
	2018-10-06	24.0
	2018-10-07	24.0
	2018-10-08	15.0
	2018-10-09	15.0
	2018-10-10	15.0
	2018-10-11	15.0
	2018-10-12	15.0
	2018-10-13	15.0
	2018-10-14	15.0
	2018-10-15	15.0
	2018-10-16	24.0
	2018-10-17	15.0
	2018-10-18	15.0
	2018-10-19	24.0
	2018-10-20	24.0
	2018-10-21	24.0
	2018-10-22	24.0
	2018-10-23	15.0
	2018-10-24	15.0
	2018-10-25	24.0
	2018-10-26	15.0
	2018-10-27	24.0
	2018-10-28	24.0
	2018-10-29	15.0
	2018-10-30	15.0
	2018-10-31	8.0

Month	Date	Hours closed
November	2018-11-01	31.0
	2018-11-02	24.0
	2018-11-03	24.0
	2018-11-04	24.0
	2018-11-05	15.0
	2018-11-06	24.0
	2018-11-07	24.0
	2018-11-08	24.0
	2018-11-09	24.0
	2018-11-10	24.0
	2018-11-11	24.0
	2018-11-12	24.0
	2018-11-13	15.0
	2018-11-14	15.0
	2018-11-15	24.0
	2018-11-16	15.0
	2018-11-17	24.0
	2018-11-18	24.0
	2018-11-19	15.0
	2018-11-20	15.0
	2018-11-22	15.0
	2018-11-23	15.0
	2018-11-24	15.0
	2018-11-25	24.0
	2018-11-26	24.0
	2018-11-27	24.0
	2018-11-28	15.0
	2018-11-29	15.0
	2018-11-30	17.0

Month	Date	Hours closed
December	2018-12-01	31.0
	2018-12-02	24.0
	2018-12-03	24.0
	2018-12-04	24.0
	2018-12-05	24.0
	2018-12-06	24.0
	2018-12-07	24.0
	2018-12-08	24.0
	2018-12-09	24.0
	2018-12-10	15.0
	2018-12-11	15.0
	2018-12-12	15.0
	2018-12-13	15.0
	2018-12-14	15.0
	2018-12-15	15.0
	2018-12-16	15.0
	2018-12-17	15.0
	2018-12-18	15.0
	2018-12-19	15.0
	2018-12-20	15.0
	2018-12-21	15.0
	2018-12-22	15.0
	2018-12-23	24.0
	2018-12-24	24.0
	2018-12-25	24.0
	2018-12-26	24.0
	2018-12-27	24.0
	2018-12-28	15.0
	2018-12-29	15.0
	2018-12-30	15.0
	2018-12-31	8.0

Month	Date	Hours closed
January	2019-01-01	22.0
	2019-01-02	24.0
	2019-01-03	15.0
	2019-01-04	15.0
	2019-01-05	24.0
	2019-01-06	24.0
	2019-01-07	15.0
	2019-01-08	24.0
	2019-01-09	15.0
	2019-01-10	15.0
	2019-01-11	24.0
	2019-01-12	24.0
	2019-01-13	24.0
	2019-01-14	24.0
	2019-01-15	24.0
	2019-01-16	24.0
	2019-01-17	24.0
	2019-01-18	24.0
	2019-01-19	24.0
	2019-01-20	24.0
	2019-01-21	24.0
	2019-01-22	24.0
	2019-01-23	24.0
	2019-01-24	24.0
	2019-01-25	15.0
	2019-01-26	24.0
	2019-01-27	24.0
	2019-01-28	24.0
	2019-01-29	15.0
	2019-01-30	15.0
	2019-01-31	8.0

Month	Date	Hours closed
February	2019-02-01	22.0
	2019-02-02	24.0
	2019-02-03	24.0
	2019-02-04	24.0
	2019-02-05	24.0
	2019-02-06	24.0
	2019-02-07	24.0
	2019-02-08	24.0
	2019-02-09	24.0
	2019-02-10	24.0
	2019-02-11	24.0
	2019-02-12	24.0
	2019-02-13	24.0
	2019-02-14	24.0
	2019-02-15	24.0
	2019-02-16	24.0
	2019-02-17	24.0
	2019-02-18	15.0
	2019-02-19	15.0
	2019-02-20	15.0
	2019-02-21	24.0
	2019-02-22	24.0
	2019-02-23	24.0
	2019-02-24	24.0
	2019-02-25	15.0
	2019-02-26	15.0
	2019-02-27	15.0
	2019-02-28	8.0

Month	Date	Hours closed
March	2019-03-01	31.0
	2019-03-02	24.0
	2019-03-03	24.0
	2019-03-04	24.0
	2019-03-05	24.0
	2019-03-06	24.0
	2019-03-07	24.0
	2019-03-08	24.0
	2019-03-09	24.0
	2019-03-10	24.0
	2019-03-11	24.0
	2019-03-12	15.0
	2019-03-13	15.0
	2019-03-14	15.0
	2019-03-15	24.0
	2019-03-16	24.0
	2019-03-17	24.0
	2019-03-18	15.0
	2019-03-19	24.0
	2019-03-20	24.0
	2019-03-21	24.0
	2019-03-22	24.0
	2019-03-23	24.0
	2019-03-24	24.0
	2019-03-25	15.0
	2019-03-26	15.0
	2019-03-27	15.0
	2019-03-28	15.0
	2019-03-29	24.0
	2019-03-30	24.0
	2019-03-31	17.0
Total		5,554.0

Guysborough Memorial Hospital		
Month	Date	Hours closed
February	2019-02-26	24.0
	2019-02-27	24.0
	2019-02-28	16.0
March	2019-03-01	32.0
Total		96.0

New Waterford Consolidated Hospital		
Month	Date	Hours closed
April	2018-04-06	10.0
	2018-04-14	10.0
	2018-04-20	10.0
May	2018-05-05	10.0
June	2018-06-01	10.0
	2018-06-02	10.0
	2018-06-08	10.0
	2018-06-09	2.0
	2018-06-15	10.0
	2018-06-23	10.0
July	2018-07-05	10.0
	2018-07-07	10.0
	2018-07-12	10.0
	2018-07-13	10.0
	2018-07-17	10.0
	2018-07-21	10.0
	2018-07-25	10.0
	2018-07-27	10.0
2018-07-31	10.0	
August	2018-08-04	10.0
	2018-08-08	10.0
	2018-08-11	10.0

Month	Date	Hours closed
September	2018-09-01	10.0
	2018-09-08	10.0
	2018-09-14	4.0
	2018-09-15	10.0
	2018-09-21	10.0
	2018-09-22	10.0
	2018-09-28	10.0
	2018-09-29	10.0
October	2018-10-06	10.0
	2018-10-12	5.0
	2018-10-13	10.0
	2018-10-19	10.0
November	2018-10-20	10.0
	2018-11-02	10.0
	2018-11-03	10.0
	2018-11-09	10.0
	2018-11-10	10.0
	2018-11-16	5.0
	2018-11-17	10.0
	2018-11-23	5.0
	2018-11-24	10.0
	2018-11-30	10.0
December	2018-12-01	10.0
	2018-12-08	10.0
	2018-12-15	10.0
	2018-12-26	9.0
	2018-12-28	9.0
	2018-12-29	9.0
	January	2019-01-01
2019-01-05		9.0
2019-01-12		9.0
2019-01-19		9.0

Month	Date	Hours closed
February	2019-02-02	9.0
	2019-02-08	9.0
	2019-02-13	9.0
	2019-02-16	9.0
	2019-02-22	9.0
	2019-02-23	9.0
March	2019-03-02	9.0
	2019-03-08	9.0
	2019-03-09	9.0
	2019-03-16	9.0
	2019-03-22	9.0
	2019-03-23	9.0
	2019-03-30	9.0
Total		621.0

Northside General Hospital		
Month	Date	Hours closed
April	2018-04-01	8.0
	2018-04-02	8.0
	2018-04-06	8.0
	2018-04-07	8.0
	2018-04-08	8.0
	2018-04-21	8.0
	2018-04-22	8.0
	2018-04-29	8.0
May	2018-05-01	8.0
	2018-05-02	8.0
	2018-05-05	8.0
	2018-05-06	8.0
	2018-05-12	8.0
	2018-05-13	8.0
	2018-05-19	8.0
	2018-05-20	8.0
	2018-05-21	8.0
	2018-05-26	8.0
	2018-05-27	8.0

Month	Date	Hours closed
June	2018-06-02	8.0
	2018-06-03	8.0
	2018-06-09	8.0
	2018-06-10	8.0
	2018-06-16	8.0
	2018-06-17	8.0
	2018-06-23	8.0
	2018-06-24	8.0
	2018-06-29	8.0
July	2018-07-01	8.0
	2018-07-07	8.0
	2018-07-08	8.0
	2018-07-13	8.0
	2018-07-14	8.0
	2018-07-15	8.0
	2018-07-16	8.0
	2018-07-17	8.0
	2018-07-21	8.0
	2018-07-22	8.0
September	2018-09-09	8.0
	2018-09-15	8.0
	2018-09-16	8.0
	2018-09-22	8.0
	2018-09-23	8.0
	2018-09-29	8.0
	2018-09-30	8.0

Month	Date	Hours closed
October	2018-10-01	8.0
	2018-10-02	8.0
	2018-10-05	8.0
	2018-10-06	8.0
	2018-10-07	8.0
	2018-10-08	8.0
	2018-10-12	8.0
	2018-10-13	8.0
	2018-10-14	8.0
	2018-10-15	8.0
	2018-10-16	8.0
	2018-10-20	8.0
	2018-10-21	8.0
	2018-10-22	8.0
	2018-10-26	8.0
	2018-10-27	8.0
	2018-10-28	8.0
November	2018-11-02	8.0
	2018-11-03	8.0
	2018-11-04	8.0
	2018-11-05	8.0
	2018-11-06	8.0
	2018-11-07	8.0
	2018-11-09	8.0
	2018-11-10	8.0
	2018-11-11	8.0
	2018-11-12	8.0
	2018-11-15	8.0
	2018-11-16	8.0
	2018-11-17	8.0
	2018-11-18	8.0
	2018-11-23	8.0
2018-11-24	8.0	
2018-11-25	8.0	
2018-11-30	8.0	

Month	Date	Hours closed
December	2018-12-07	8.0
	2018-12-08	8.0
	2018-12-09	8.0
	2018-12-10	8.0
	2018-12-14	8.0
	2018-12-15	8.0
	2018-12-16	8.0
	2018-12-22	8.0
	2018-12-23	8.0
	2018-12-24	8.0
	2018-12-25	8.0
	2018-12-26	8.0
	2018-12-29	8.0
	2018-12-30	8.0
2018-12-31	8.0	
January	2019-01-01	8.0
	2019-01-02	8.0
	2019-01-05	8.0
	2019-01-06	8.0
	2019-01-07	8.0
	2019-01-08	8.0
	2019-01-09	8.0
	2019-01-11	8.0
	2019-01-12	8.0
	2019-01-13	8.0
	2019-01-15	8.0
	2019-01-19	8.0
	2019-01-20	8.0
	2019-01-21	8.0
	2019-01-25	8.0
2019-01-26	8.0	
2019-01-27	8.0	
2019-01-28	8.0	
2019-01-29	8.0	
2019-01-30	8.0	

Month	Date	Hours closed
February	2019-02-02	8.0
	2019-02-03	8.0
	2019-02-05	8.0
	2019-02-06	8.0
	2019-02-08	8.0
	2019-02-09	8.0
	2019-02-10	8.0
	2019-02-12	8.0
	2019-02-15	8.0
	2019-02-16	8.0
	2019-02-17	8.0
	2019-02-18	8.0
	2019-02-19	8.0
	2019-02-22	8.0
	2019-02-23	8.0
	2019-02-24	8.0

Month	Date	Hours closed
March	2019-03-01	8.0
	2019-03-02	8.0
	2019-03-03	8.0
	2019-03-04	8.0
	2019-03-06	8.0
	2019-03-07	8.0
	2019-03-08	8.0
	2019-03-09	8.0
	2019-03-10	8.0
	2019-03-11	8.0
	2019-03-13	8.0
	2019-03-14	8.0
	2019-03-16	8.0
	2019-03-17	8.0
	2019-03-18	8.0
	2019-03-19	8.0
	2019-03-20	8.0
	2019-03-21	8.0
	2019-03-22	8.0
	2019-03-23	8.0
2019-03-24	8.0	
2019-03-30	8.0	
2019-03-31	8.0	
Total		1,232.0

St. Anne Community & Nursing Care Centre		
Month	Date	Hours closed
April	2018-04-07	12.0
	2018-04-08	24.0
	2018-04-09	24.0
	2018-04-10	24.0
	2018-04-11	24.0
	2018-04-12	24.0
	2018-04-13	24.0
	2018-04-14	24.0
	2018-04-15	12.0

Month	Date	Hours closed
May	2018-05-03	12.0
June	2018-06-03	12.0
	2018-06-13	24.0
	2018-06-24	4.0
	2018-06-28	12.0
July	2018-07-01	12.0
	2018-07-08	12.0
	2018-07-15	12.0
	2018-07-22	12.0
	2018-07-29	20.0
	2018-07-31	6.0
August	2018-08-05	8.0
	2018-08-08	13.0
	2018-08-12	8.0
	2018-08-19	8.0
	2018-08-26	8.0
September	2018-09-17	12.0
October	2018-10-30	12.0
November	2018-11-10	14.0
	2018-11-11	24.0
	2018-11-12	24.0
	2018-11-13	24.0
	2018-11-14	24.0
	2018-11-15	24.0
	2018-11-16	24.0
	2018-11-17	24.0
	2018-11-18	24.0
	2018-11-19	13.0
December	2018-12-24	32.0
	2018-12-25	24.0
	2018-12-31	15.0
January	2019-01-01	8.0
	2019-01-27	8.0
February	2019-02-08	12.0
March	2019-03-02	14.0
	2019-03-12	14.0
	2019-03-13	13.0
Total		758.0

Strait Richmond Hospital		
Month	Date	Hours closed
April	2018-04-04	25.0
	2018-04-18	25.0
	2018-04-21	25.0
	2018-04-22	24.0
	2018-04-25	25.0
May	2018-05-02	25.0
	2018-05-09	25.0
	2018-05-23	25.0
	2018-05-30	25.0
June	2018-06-06	25.0
	2018-06-13	25.0
July	2018-07-01	25.0
	2018-07-04	25.0
August	2018-08-04	25.0
	2018-08-05	24.0
	2018-08-08	11.0
October	2018-10-03	25.0
	2018-10-24	25.0
	2018-10-31	17.0
November	2018-11-01	8.0
	2018-11-14	25.0
	2018-11-17	24.0
	2018-11-18	25.0
	2018-11-26	25.0
December	2018-12-12	10.0
	2018-12-31	16.0
January	2019-01-01	32.0
	2019-01-05	25.0
	2019-01-06	24.0
February	2019-02-06	25.0
	2019-02-13	25.0
	2019-02-18	25.0
	2019-02-20	25.0

Month	Date	Hours closed
March	2019-03-06	25.0
	2019-03-13	25.0
	2019-03-20	25.0
	2019-03-27	25.0
	2019-03-30	24.0
	2019-03-31	17.0
Total		906.0

Victoria County Memorial Hospital		
Month	Date	Hours closed
April	2018-04-16	24.0
	2018-04-23	24.0
May	2018-05-12	24.0
Total		72.0

ZONE 4 (CENTRAL)

Eastern Shore Memorial Hospital		
Month	Date	Hours closed
April	2018-04-05	24.0
	2018-04-09	24.0
	2018-04-12	24.0
	2018-04-16	24.0
	2018-04-19	24.0
	2018-04-20	24.0
	2018-04-21	24.0
	2018-04-22	24.0
	2018-04-23	24.0
	2018-04-26	24.0
	2018-04-27	24.0
	2018-04-28	24.0
	2018-04-29	24.0
	2018-04-30	24.0

Month	Date	Hours closed	
May	2018-05-03	24.0	
	2018-05-07	24.0	
	2018-05-10	24.0	
	2018-05-14	24.0	
	2018-05-17	24.0	
	2018-05-18	24.0	
	2018-05-19	24.0	
	2018-05-20	24.0	
	2018-05-21	24.0	
	2018-05-24	24.0	
	2018-05-25	24.0	
	2018-05-26	24.0	
	2018-05-27	24.0	
	2018-05-28	24.0	
	2018-05-31	24.0	
	June	2018-06-04	24.0
		2018-06-14	24.0
		2018-06-18	24.0
2018-06-21		24.0	
2018-06-22		24.0	
2018-06-23		24.0	
2018-06-24		24.0	
July	2018-06-25	24.0	
	2018-06-28	24.0	
	2018-07-05	24.0	
	2018-07-09	24.0	
	2018-07-12	24.0	
	2018-07-13	24.0	
	2018-07-14	24.0	
	2018-07-15	24.0	
	2018-07-16	24.0	
	2018-07-19	24.0	
	2018-07-20	24.0	
	2018-07-21	24.0	
	2018-07-22	24.0	
	2018-07-23	24.0	
2018-07-24	24.0		
2018-07-26	9.0		
2018-07-30	24.0		

Month	Date	Hours closed
August	2018-08-02	24.0
	2018-08-06	12.0
	2018-08-07	24.0
	2018-08-10	24.0
	2018-08-11	24.0
	2018-08-12	24.0
	2018-08-13	24.0
	2018-08-17	24.0
	2018-08-18	24.0
	2018-08-19	24.0
	2018-08-20	24.0
	2018-08-21	24.0
	2018-08-23	24.0
	2018-08-27	24.0
	2018-08-29	12.0
	2018-08-30	24.0
	September	2018-09-05
2018-09-06		24.0
2018-09-07		24.0
2018-09-08		24.0
2018-09-09		24.0
2018-09-10		24.0
2018-09-17		24.0
2018-09-18		24.0
2018-09-21		12.0
2018-09-22		12.0
2018-09-24		24.0
2018-09-25		24.0
2018-09-28		24.0
2018-09-29		24.0
2018-09-30	24.0	

Month	Date	Hours closed
October	2018-10-02	24.0
	2018-10-05	24.0
	2018-10-06	24.0
	2018-10-07	24.0
	2018-10-08	12.0
	2018-10-09	2.5
	2018-10-11	24.0
	2018-10-15	24.0
	2018-10-18	24.0
	2018-10-25	24.0
	2018-10-26	24.0
	2018-10-27	24.0
	2018-10-28	12.0
	2018-10-30	24.0
	November	2018-11-01
2018-11-02		24.0
2018-11-03		24.0
2018-11-04		24.0
2018-11-08		24.0
2018-11-12		24.0
2018-11-15		24.0
2018-11-22		24.0
2018-11-23		24.0
2018-11-24		24.0
2018-11-25		24.0
2018-11-26		2.0
2018-11-29	24.0	
2018-11-30	24.0	

Month	Date	Hours closed
December	2018-12-01	24.0
	2018-12-02	24.0
	2018-12-03	24.0
	2018-12-06	24.0
	2018-12-10	24.0
	2018-12-13	24.0
	2018-12-14	24.0
	2018-12-15	24.0
	2018-12-16	24.0
	2018-12-20	24.0
	2018-12-21	11.0
	2018-12-22	12.0
	2018-12-25	12.0
	2018-12-27	24.0
	2018-12-28	24.0
	2018-12-29	24.0
	2018-12-30	24.0
2018-12-31	24.0	
January	2019-01-01	24.0
	2019-01-03	24.0
	2019-01-07	12.0
	2019-01-10	24.0
	2019-01-17	24.0
	2019-01-18	24.0
	2019-01-19	24.0
	2019-01-20	24.0
	2019-01-24	24.0
	2019-01-25	24.0
2019-01-26	24.0	
2019-01-27	24.0	
2019-01-31	24.0	

Month	Date	Hours closed
February	2019-02-01	10.0
	2019-02-04	24.0
	2019-02-07	24.0
	2019-02-11	24.0
	2019-02-14	24.0
	2019-02-18	24.0
	2019-02-19	2.0
	2019-02-21	24.0
	2019-02-25	24.0
	2019-02-28	24.0
March	2019-03-04	24.0
	2019-03-05	6.0
	2019-03-08	24.0
	2019-03-11	24.0
	2019-03-14	24.0
	2019-03-18	24.0
	2019-03-21	24.0
	2019-03-25	24.0
	2019-03-28	24.0
	Total	

Musquodoboit Valley Memorial Hospital		
Month	Date	Hours closed
June	2018-06-22	12.0
	2018-06-26	12.0
July	2018-07-03	12.0
	2018-07-06	12.0
	2018-07-30	12.0
August	2018-08-03	12.0
	2018-08-10	12.0
	2018-08-31	12.0
September	2018-09-01	6.0
	2018-09-12	12.0
November	2018-11-02	12.0
December	2018-12-01	12.0
	2018-12-07	12.0
	2018-12-10	11.0
	2018-12-14	3.0
	2018-12-16	12.0
	2018-12-24	3.0
	2018-12-25	12.0
	2018-12-26	12.0
2018-12-28	12.0	

Month	Date	Hours closed
January	2019-01-01	12.0
	2019-01-11	12.0
	2019-01-21	10.5
February	2019-02-02	12.0
	2019-02-03	12.0
	2019-02-07	12.0
	2019-02-09	12.0
	2019-02-10	12.0
	2019-02-13	12.0
	2019-02-16	12.0
	2019-02-17	12.0
	2019-02-18	12.0
	2019-02-22	12.0
March	2019-03-03	12.0
	2019-03-04	3.0
	2019-03-06	4.0
	2019-03-08	12.0
	2019-03-09	12.0
	2019-03-16	12.0
	2019-03-17	12.0
	2019-03-21	12.0
	2019-03-22	12.0
	2019-03-23	12.0
	2019-03-24	12.0
	2019-03-30	12.0
	2019-03-31	12.0
Total		508.5

Month	Date	Hours closed
September	2018-09-09	12.0
	2018-09-15	8.0
	2018-09-16	12.0
	2018-09-22	12.0
	2018-09-27	7.0
October	2018-10-06	7.0
	2018-10-12	4.0
	2018-10-24	12.0
November	2018-11-11	4.0
	2018-11-16	4.0
February	2019-02-10	12.0
	2019-02-25	0.8
March	2019-03-04	12.0
	2019-03-14	1.0
	2019-03-25	12.0
Total		197.3

Twin Oaks Memorial Hospital		
Month	Date	Hours closed
May	2018-05-19	4.0
	2018-05-24	12.0
June	2018-06-12	12.0
July	2018-07-06	5.5
August	2018-08-09	12.0
	2018-08-18	12.0
	2018-08-23	12.0
	2018-08-31	8.0

© Crown copyright, Province of Nova Scotia, 2019
Annual Accountability Report on Emergency Departments
April 1, 2018 – March 31, 2019
Department of Health and Wellness
December 2019
ISBN: 978-1-989654-17-0

