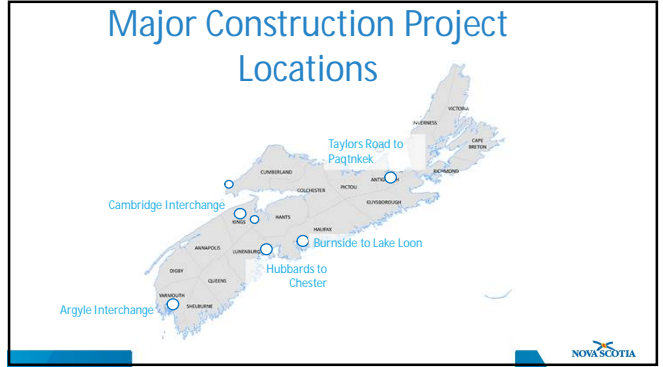
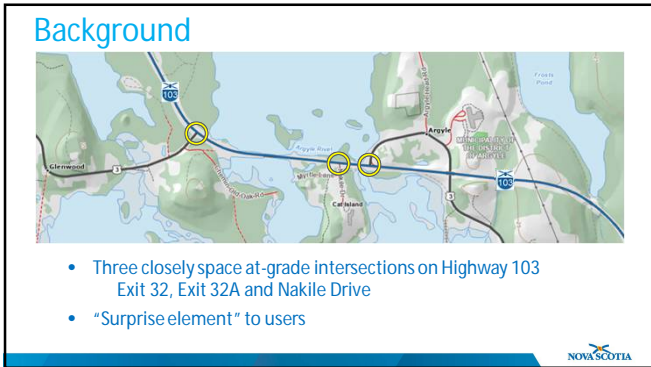




1

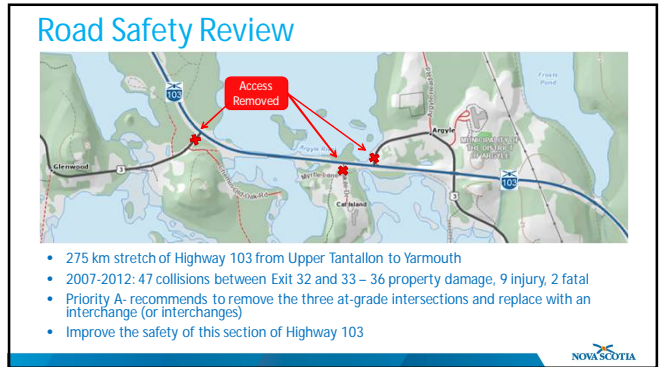


2



3

- Three closely spaced at-grade intersections on Highway 103
Exit 32, Exit 32A and Nakile Drive
- “Surprise element” to users



4

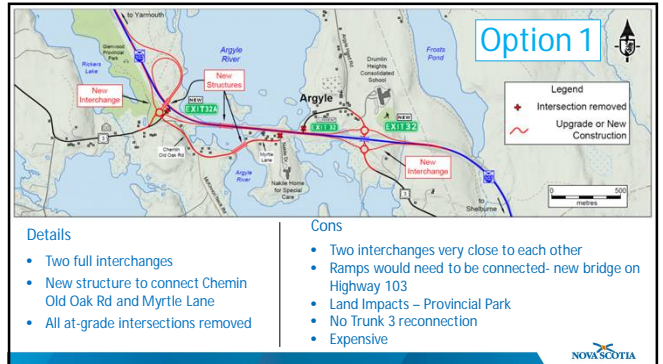
- 275 km stretch of Highway 103 from Upper Tantallon to Yarmouth
- 2007-2012: 47 collisions between Exit 32 and 33 – 36 property damage, 9 injury, 2 fatal
- Priority A- recommends to remove the three at-grade intersections and replace with an interchange (or interchanges)
- Improve the safety of this section of Highway 103

Key Considerations



- Interchange to provide access once intersections removed
- Reconnection of Trunk 3
 - Improved access
 - Incident management by having continuous local road through the area
- Safe Active Transportation

5



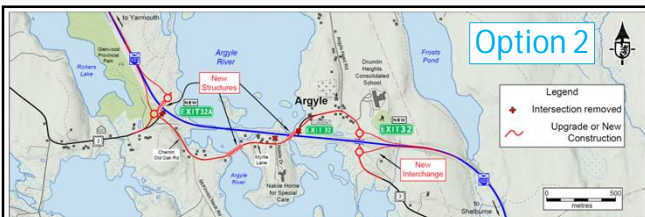
Details

- Two full interchanges
- New structure to connect Chemin Old Oak Rd and Myrtle Lane
- All at-grade intersections removed

Cons

- Two interchanges very close to each other
- Ramps would need to be connected- new bridge on Highway 103
- Land Impacts – Provincial Park
- No Trunk 3 reconnection
- Expensive

6



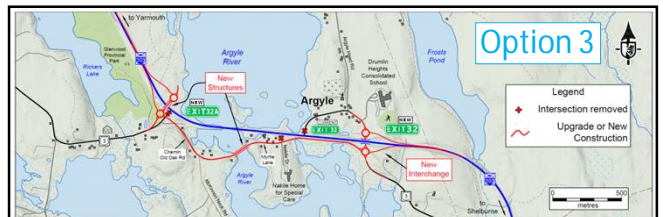
Details

- Two half interchanges
- Reconnect Trunk 3 over Highway 103
- All at-grade intersections removed

Cons

- Three structures
- Land impacts
- Navigation for non-local users
- Expensive

7



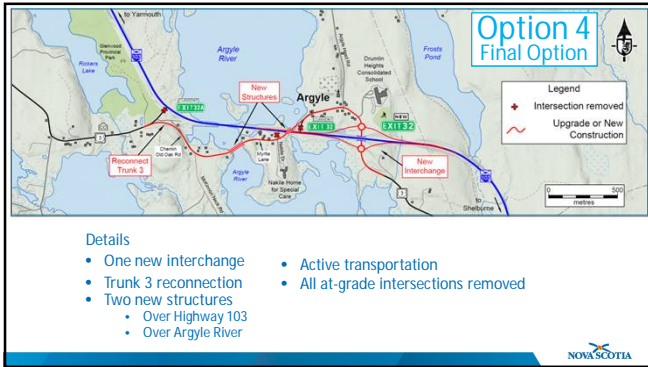
Details

- Two half interchanges
- Reconnect Trunk 3 parallel to highway
- All at-grade intersections removed

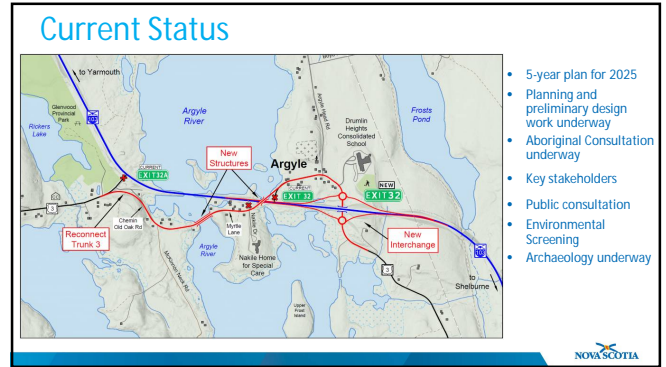
Cons

- Land impacts
- Wetland Impacts
- Navigation for non-local users
- Expensive

8



9



10

Environmental and Archaeological

- Environmental work started on DPW property
- Some private property falls within environmental screening area
- Spring, summer and fall work
- All non-invasive work
 - Terrestrial
 - Field surveys including bird, vegetation, and wetland surveys, focused on identifying species at risk and other rare and sensitive environmental features
 - Archaeological
 - An archaeological resource impact assessment (ARIA), which includes a desktop study and a site walkover to assess potential impacts to cultural resources associate with the project
- Critical for the advancement of the project and protection of environment for consultant to be able to access all potentially impacted land

11

Next Steps

- Take info we get today and incorporate into design
- Determine land required
- Structure design to begin
- Construction start planned for 2025 (2-3 years of construction)

12

Questions?

