

## **Nova Scotia Weekly COVID-19 Epidemiologic Summary: 12 April 2022, 17:00**

Office of the Chief Medical Officer of Health  
Nova Scotia Department of Health and Wellness

### **Highlights:**

- This week's reporting period is six days long and runs from Wednesday, April 6 to Monday, April 11. Future reports will capture data from Tuesday to Monday.
- An additional 6,912 PCR positive results, 14 deaths, and 72 hospitalizations were reported in the six-day period ending April 11.
- The number of PCR positive cases has continued to increase since March, as has the number of cases linked to long-term care and residential care facility outbreaks.
- There was an increase in the number of hospitalizations and deaths due to COVID-19 this reporting period compared to last week. However, the percentage of COVID-19 cases who are hospitalized or die remains lower in Wave 5 compared to previous waves, particularly Wave 1 when vaccines were not yet available.
- For Wave 5, the case fatality rate among long-term care residents (2.5%) has been substantially lower compared to all other waves, particularly the first wave (21.7%).
- Individuals aged 65 years or older continue to have the highest rates of hospitalization and death.
- Vaccination continues to significantly reduce the risk of hospitalization and death.

## Wave 5 COVID-19 Cases and Severe Outcomes – December 8, 2021 to present

**Table 1. PCR positive results, hospitalizations and deaths**

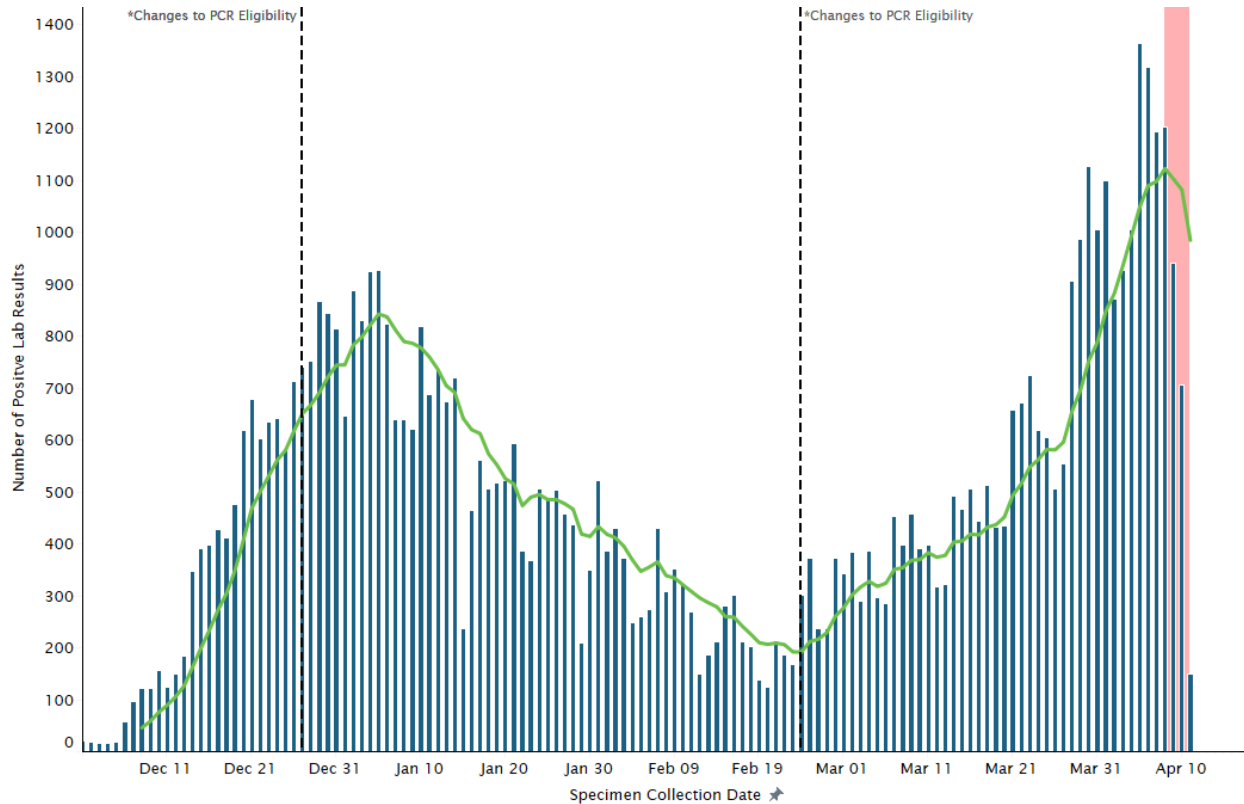
	Number reported in the current week (April 6-April 11)	Number reported in the previous week (March 30-April 5)	Change from last reporting period	Wave 5 cumulative totals (December 8, 2021 - present)	Age range	Median age	Median LOS
<b>PCR positives</b>	6912	6991	-79	64941	0 - 110	41	n/a
<b>Hospitalizations</b>	72	67	5	861	0 - 101	70	6.8 days
<b>Deaths</b>	14	8	6	165	10 - 100	80	n/a

Data Sources: PCR positive results – Provincial Public Health Lab Network; Hospitalizations – PPHLN, Meditech, STAR; Deaths – Panorama

\*Notes:

- Current week is based on 6 days rather than previous week which is based on 7 days
- Laboratory tests are also referred to as PCR (polymerase chain reaction) tests
- LOS means length of stay

**Figure 1. Number and seven-day moving average of PCR positive results by collection date (N=64,941)\***

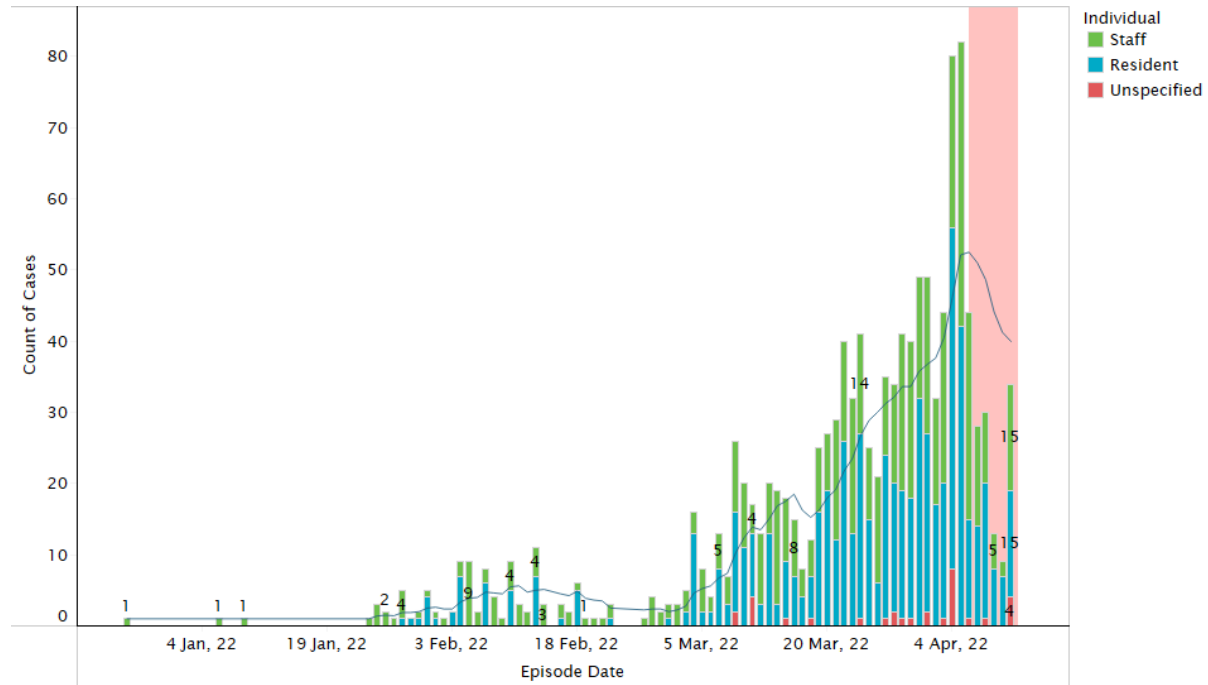


Data source: Provincial Public Health Lab Network

**\*Notes:**

- Laboratory tests are also referred to as PCR (polymerase chain reaction) tests
- The previous 3 days presented in the red area should be interpreted with caution. PCR positive results during this timeframe may rise as labs continue to be processed
- Due to a change in how rapid antigen positive confirmatory tests are being captured in the laboratory data, it is no longer possible to report these results separately.
- Two changes to PCR eligibility were made during Wave 5:
  - o On December 27, 2021, PCR testing was limited to certain priority groups, including those at highest risk of severe disease, people living in long-term care, and health-care workers (outlined as groups 1-3 in the following link: <https://www.nshealth.ca/coronavirustesting>).
  - o On February 24, 2022, PCR testing eligibility was expanded to include confirmatory testing for anyone who tested positive on a rapid test (group 4 in the link above).

**Figure 2: Number of COVID-19 cases and seven-day moving average of cases linked to open long-term care and residential care facility outbreaks (N=1,224)**



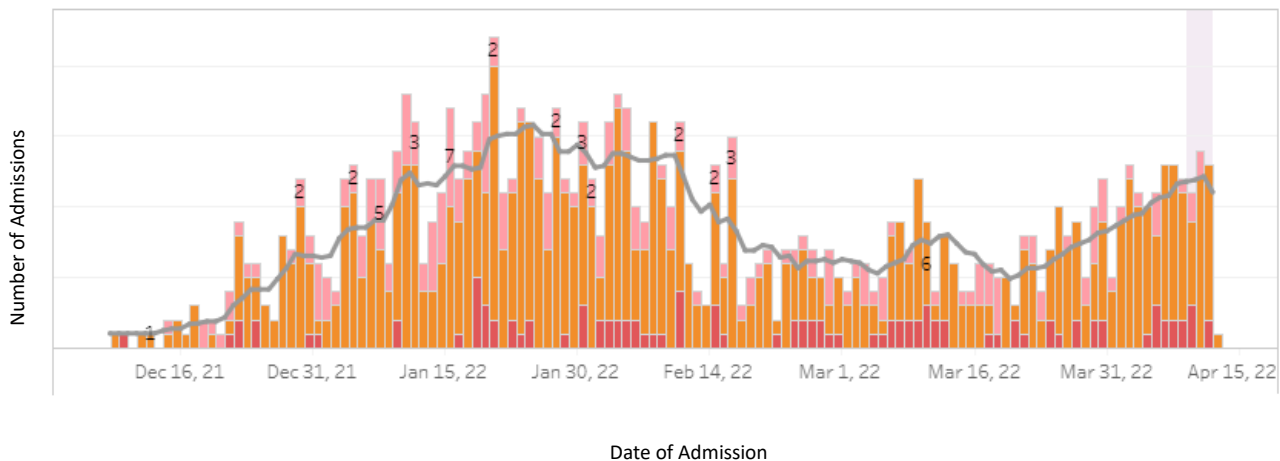
Data source: Panorama

\*Notes:

- Only open (ongoing) confirmed outbreaks are included
- A confirmed outbreak is defined as two or more lab-confirmed cases in residents and/or staff within a 14-day period AND an epidemiological link between cases AND at least one reported case could have acquired the infection in the facility
- Only facilities that are designated as long-term care congregate settings are included; it excludes residential care facilities and disability support program facilities with 12 or fewer residents
- Includes confirmed and probable cases entered into Panorama and linked to the outbreak
- Episode date is recorded as the date of symptom onset. If that information is unavailable, the following is used (in hierarchical order): specimen collection date, lab result date clinical diagnosis date
- The five-day period presented in the red area should be interpreted with caution. Case counts during this timeframe may rise as individuals are identified and tested; as tests are processed; as data is inputted into Panorama

# Novel Coronavirus (COVID-19)

**Figure 3. Daily COVID-19 hospital admissions by unit type (N=1072)**



Data source: PPHLN, Meditech and STAR

\*Note:

- The five-day period presented in the red area should be interpreted with caution. Case counts during this timeframe may rise as individuals are identified and tested and as tests are processed

**Table 2. Hospitalization\* and death rates by age group during Wave 5**

Age Group	Number	Crude Rate per 100k
<b>Hospitalizations</b>		
<18 years	36	19.3
18-49 years	122	32.9
50-64 years	158	72.1
65+ years	545	252.5
<b>Deaths</b>		
<18 years	<5	--
18-49 years	<5	--
50-64 years	16	7.3
65+ years	144	66.7

Data source: Hospitalizations - PPHLN, Meditech and STAR; Deaths – Panorama; Denominator - Statistics Canada  
Notes:

- Hospitalizations for individuals missing age are excluded

**Table 3. Age-adjusted hospitalization\* and death rates by vaccine status during Wave 5**

Vaccination Status	Number	Crude Rate per 100k Person-Years	Age-Adjusted Rate per 100k Person-Years	Risk Reduction (Relative to Unvaccinated/1 Dose)
<b>Hospitalizations</b>				
Unvaccinated/1 Dose	229	388.0	1112.5	N/A
2 Dose	312	178.1	198.5	82.2%
3 Dose	320	293.9	185.6	83.3%
<b>Deaths</b>				
Unvaccinated/1 Dose	44	74.6	248.6	N/A
2 Dose	79	45.1	54.9	77.9%
3 Dose	42	38.6	21.4	91.4%

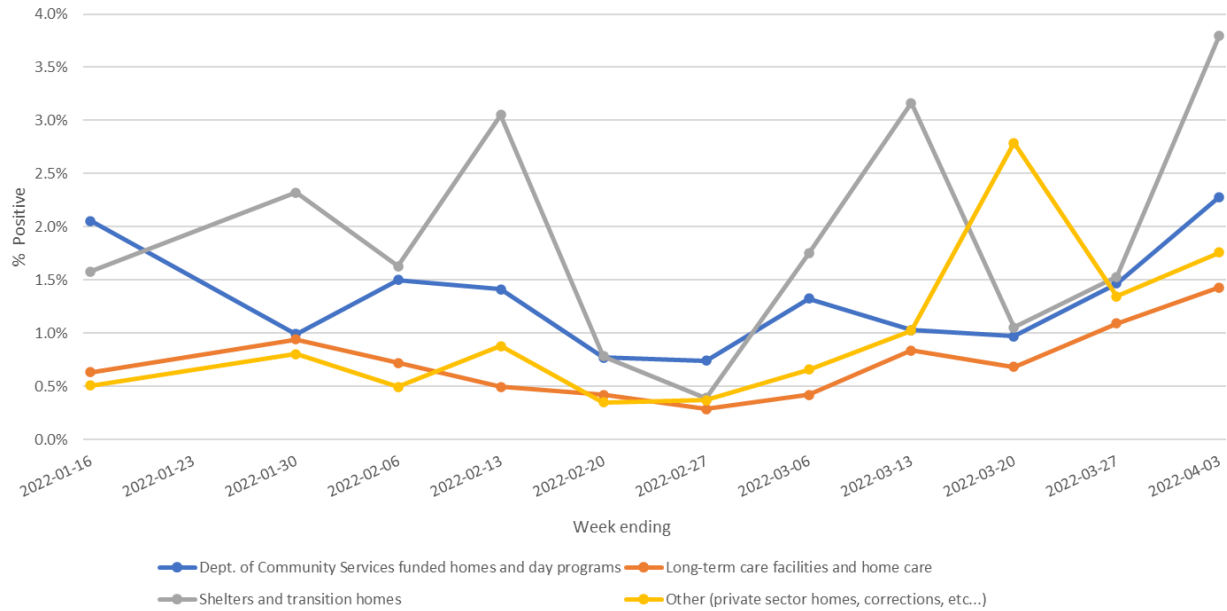
Data source: Hospitalizations - PPHLN, Meditech and STAR; Deaths – Panorama; Denominator - Statistics Canada

Notes:

- Hospitalizations for individuals missing age are excluded from the analysis (counts, crude rates, age-adjusted rates, risk reduction)
- A person is considered unvaccinated when they have zero doses of any COVID-19 vaccine
- A person is considered to have one dose when they have a single dose of any vaccine OR are within 14 days of receiving a second dose of any COVID-19 vaccine
- A person is considered to have two doses 14 or more days after the second dose of any vaccine OR are within 14 days of receiving a third dose of any COVID-19 vaccine
- A person is considered to have three doses 14 or more days after a third dose of any COVID-19 vaccine

## Community-based Rapid Test; January 10, 2022 to present

**Figure 4. Proportion of positive rapid antigen test results for some high priority populations, by week**



Data source = High Priority Testing Stream

\*Notes:

- Denominator is total number of tests distributed
- Includes Department of Community Services-funded homes and day programs, shelters and transition homes, long-term care facilities and home care, private group homes, and correctional facilities



## Full pandemic descriptive summary – March 2020-present

**Table 4. Summary of confirmed and probable COVID-19 cases and outcomes, by wave**

	Wave 1	Wave 2	Wave 3	Wave 4	Wave 5
<b>Number of cases</b>	1100	662	4167	3056	64941
<b>% Hospitalized (non-ICU + ICU)</b>	5.3%	2.1%	6.3%	3.1%	1.3%
<b>% Hospitalized ICU</b>	1.4%	0.5%	1.8%	0.8%	0.2%
<b>% Deceased</b>	5.9%	0.2%	0.7%	0.6%	0.2%

Data sources: Panorama (cases, hospitalizations, deaths in waves 1-4; deaths in wave 5), Provincial Public Health Laboratory Network (positive PCR tests in wave 5), Meditech and STAR (hospitalizations), Panorama (deaths)

Wave dates are classified as follows

- Wave 1 – March 1, 2020 to September 30, 2020
- Wave 2 – October 1, 2020 to March 31, 2021
- Wave 3 – April 1, 2021 to July 31, 2021
- Wave 4 – August 1, 2021 to December 7, 2021
- Wave 5 – December 8, 2021 to present

**Table 5. Number of COVID-19 cases and deaths among residents of long-term care facilities, by wave**

	Wave 1	Wave 2	Wave 3	Wave 4	Wave 5	Total
Number of long-term care resident COVID-19 cases	263	3	7	43	1413	1729
Number of long-term care resident COVID-19 deaths	57	0	1	4	36	98
Case Fatality Rate	21.7%	0.0%	14.3%	9.3%	2.5%	5.7%

Data Source: Panorama

\*Notes:

- Case counts can increase or decrease depending on confirmatory testing of probable cases
- Case counts include confirmed and probable cases that were classified as LTC residents in Panorama. This does not include individuals attached to outbreaks in other congregate settings (i.e. assisted living, group homes, etc.).

Wave dates are classified as follows

- Wave 1 – March 1, 2020 to September 30, 2020
- Wave 2 – October 1, 2020 to March 31, 2021
- Wave 3 – April 1, 2021 to July 31, 2021
- Wave 4 – August 1, 2021 to December 7, 2021
- Wave 5 – December 8, 2021 to present

## Data Sources and Notes:

### Panorama

- Data are valid to the day of the report at 07:00
- Data presented in this report contain the information available at the time of data extraction. It may be incomplete pending follow-up. As more information becomes available, it will be included in subsequent reports.

### Provincial Public Health Laboratory Network

- Data are valid to the day of the report at 05:30.
- Data presented in this report contain the information available at the time of data extraction. It may be incomplete pending follow-up. As more information becomes available, it will be included in subsequent reports

### Meditech and STAR (Nova Scotia Health)

- Data are valid to the day of the report at 04:00
- Data are based on positive lab results and reflect patients with a valid health card number at the time of testing or admission
- Data presented in this report contain the information available at the time of data extraction. It may be incomplete pending follow-up. As more information becomes available, it will be included in subsequent reports
- Includes patients that are assumed to be admitted for COVID-related treatment based on inpatient location

### High Priority Testing Stream

- Data are valid to the Sunday before the report at 11:59pm

### Statistics Canada

- Table 17-10-0005-01 - Population estimates on July 1st (2021), by age and sex

## COVID-19 Case Definitions

<https://www.canada.ca/en/public-health/services/diseases/2019-novel-coronavirus-infection/health-professionals/national-case-definition.html>