

Project Reclamation



Austrian Pine / spruce planted in 2010



Naturally seeded trees



Late summer deer tracks around small water hole designed into the reclamation



Larch tree planted 2010 or 2009



Reclamation completed early 2000s



Deer in the main field next to tailings management area



Trees planted in the mid-to-late 1990s

Project Activities



12 yd. loader loading a 75 ton truck with gypsum to be hauled to the crusher



Bottom of quarry after heavy rain. Loading truck in background



Stop over of waterfowl in flooded section of mine. Truck being loaded with gypsum ore for processing



Lower inactive area of mine starting to get overgrown with cattails



Production drill used to drill holes for the blasting process



Bulldozer pushing mud down to uncover gypsum



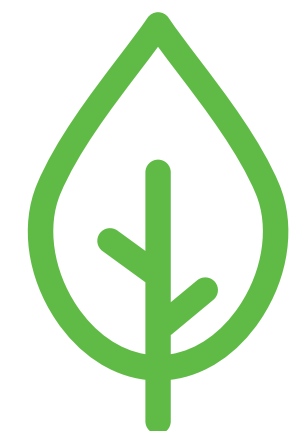
Bulldozer pushing mud down to uncover gypsum



75 ton truck dumping gypsum ore at the crusher for processing

Environmental Assessment

Environmental Assessment registration is being prepared in accordance with the Nova Scotia *Environment Act*. It will focus on:



Vascular plants

Wetlands

Birds and other wildlife

Surface and groundwater resources

Archaeological and heritage resources

Land and resource use

Mi'kmaq traditional land use



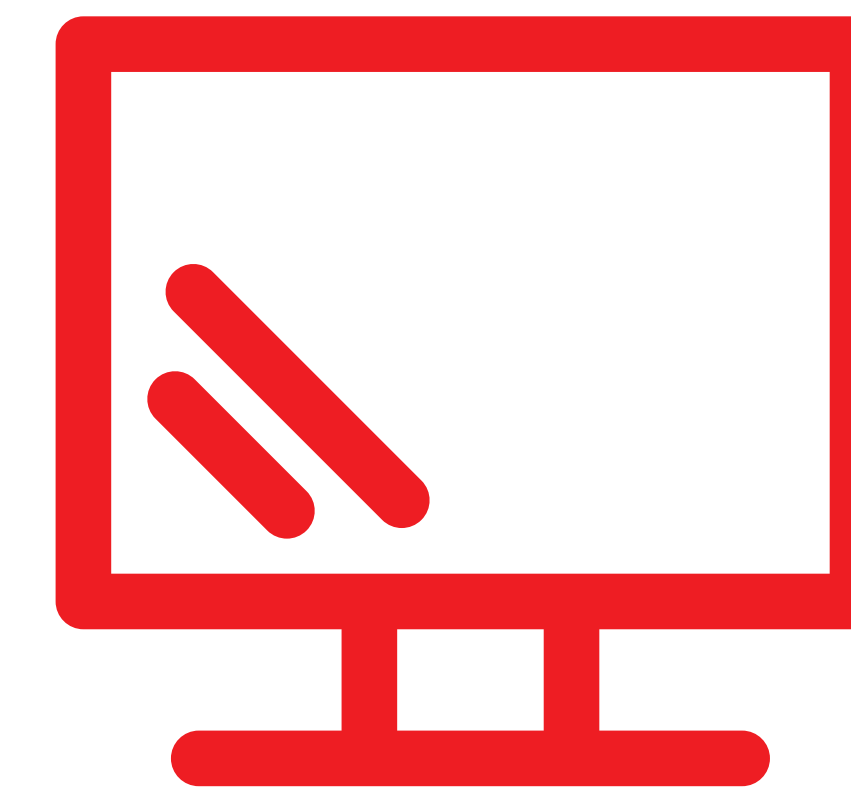
Public Consultation

Inform public and key stakeholders about the project

Provide accurate and consistent information

Obtain input from potentially affected people and parties

Focus the environmental assessment on issues of concern to identify and implement appropriate mitigation measures



Note: The EA document will be available for public review and comment once it is filed with Nova Scotia Environment.

www.novascotia.ca/nse/ea

Mi'kmaq Ecological Knowledge Study

National Gypsum has commissioned a Mi'kmaq Ecological Knowledge Study (MEKS) for the proposed project.



The study will gather and document Mi'kmaq use and knowledge of resources in the Project Area to be considered in the Environmental Assessment.

MEKS includes interviews with knowledge holders, archival records and field work.

The report is being prepared by Membertou Geomatics Consultants.



Community Involvement

National Gypsum is proud of our community involvement with:

Lions Club

Carroll's Corner Community Association

Mission to Seafarers

Milford Lantz United Church

CHAPS

Property for Walking Trail

School Scholarship Funds

East Hants Chamber of Commerce

Educational Tours Elementary through to University

Community Projects (donated equipment)



Carroll's Corner Community Centre Walking Trail Project

thanks for stopping by

National Gypsum Mine Extension Project



for more information, please contact us



Jeff Newton | National Gypsum
jeffn@nationalgypsum.com
902.883.2227 ext. 227



Kelley Fraser | Stantec
kelley.fraser@stantec.com
902.468.7777 ext. 7380

National Gypsum Mine Extension Project

Open House, October 22, 2014
Carroll's Corner Community Centre
Carroll's Corner, Nova Scotia

COMMENTS AND QUESTIONS

1. Do you have any comments or suggestions about this open house?

2. Are there any comments, suggestions, concerns or issues regarding this project that you would like to bring to our attention?

3. If you have any questions that were not answered today, please list them below along with your name and contact information and we will get back to you with a response.

Name:

Telephone:

Email:

Jeff Newton
National Gypsum Plant Manager
JeffN@NationalGypsum.com
902-883-2224 x 227



October 3, 2014
File: 121511228.300

Attention: Ms. Twila Gaudet, BA, LL.B, Consultation Liaison

Kwilmu'kw Maw-klusuaqn Negotiation Office
851 Willow Street
Truro, NS B2N 6N8
twilagaudet@mikmaqrights.com

Dear Ms. Gaudet,

Reference: National Gypsum Mine Expansion, Milford, NS

This letter is to thank you for meeting with National Gypsum and Stantec on September 4, 2014 and provide you with additional information on the proposed expansion of the National Gypsum Mine near Milford Station, Nova Scotia. National Gypsum would also like to take this opportunity to invite the Kwilmu'kw Maw-klusuaqn Negotiation Office (KMKNO) to the Open House public drop-in meeting to be held at the Carrol's Corner Community Centre from 4 to 7 PM on October 22, 2014.

National Gypsum owns and operates a 301 ha mine in Milford Station, Halifax County, Nova Scotia (see Figure 1). The mine is operating under an Industrial Approval (Approval No.89-100) that was obtained from the Nova Scotia Environment (NSE) in 1989, pursuant to Division V of the *Activities Designation Regulations*. In July 2013, additional Non-Mineral Registration tracts were approved by the Minister of Natural Resources.

National Gypsum wishes to expand the existing operation by continuing to mine gypsum and the possibility of mining anhydrite rock (used mainly in the production of cement) in the future, while maintaining production rates at approximately current levels.

Stantec Consulting Ltd, on behalf of National Gypsum, is currently preparing the documentation required to register this Project as a Class I Undertaking under the Environmental Assessment Regulations pursuant to the *Nova Scotia Environment Act*. The Environmental Assessment Registration will be prepared in accordance with the *Guide to Preparing an EA Registration Document for Mining Developments in Nova Scotia* (NSE 2009). A Mi'kmaq Ecological Knowledge Study is also currently being undertaken by Membertou Geomatics.

Please find enclosed the Project Information Sheet and the corresponding Figure 1, which provide more details regarding the Project and the site location.

Feel free to contact the undersigned or the contacts listed on the Project Information Sheet with any comments, concerns, or questions you may have regarding the project or the upcoming



October 3, 2014
Ms. Twila Gaudet, BA, LL.B, Consultation Liaison
Page 2 of 2

Reference: National Gypsum Mine Expansion, Milford, NS

Open House on October 22, 2014. A similar letter and invitation has also been extended to those in the copy list below.

Regards,

Stantec Consulting Ltd.

Kelley Fraser, MES
Environmental Assessment Project Manager
Phone: 902-468-7777
Fax: 902-468-9009
Kelley.fraser@stantec.com

Attachment: Open House Invitation
Project Information Sheet
Figure 1

- c. Bridget Tutty, Environmental Assessment Officer, Nova Scotia Environment
Chief Copage, Sipekne'katik (Shubenacadie) First Nation
Chief Gloade, Millbrook First Nation
Don Julian, Executive Director, The Confederacy of Mainland Mi'kmaq
Kim Paul, Environmental Services, Union of Nova Scotia Indians

fk v:\1215\active\121510xxx\121511228_national_gypsum_ea\reporting\aboriginal engagement\letter_kmk.docx



October 3, 2014
File: 121511228.300

Attention: Chief Rufus Copage, Sipekne'katik (Shubenacadie) First Nation

522 Church St
Indian Brook NS
B0N 1W0
rufuscopage@hotmail.com

Dear Chief Copage,

Reference: National Gypsum Mine Expansion, Milford, NS

As you are aware, National Gypsum is proposing to extend the National Gypsum Mine near Milford Station, Nova Scotia. This letter is to provide you with additional information on the project. As well, National Gypsum would also like to take this opportunity to invite you to the Open House public drop-in meeting to be held at the Carrol's Corner Community Centre from 4 to 7 PM on October 22, 2014.

National Gypsum owns and operates a 301 ha mine in Milford Station, Halifax County, Nova Scotia (see Figure 1). The mine is operating under an Industrial Approval (Approval No.89-100) that was obtained from the Nova Scotia Environment (NSE) in 1989, pursuant to Division V of the *Activities Designation Regulations*. In July 2013, additional Non-Mineral Registration tracts were approved by the Minister of Natural Resources.

National Gypsum wishes to expand the existing operation by continuing to mine gypsum and the possibility of mining anhydrite rock (used mainly in the production of cement) in the future, while maintaining production rates at approximately current levels.

Stantec Consulting Ltd, on behalf of National Gypsum, is currently preparing the documentation required to register this Project as a Class I Undertaking under the Environmental Assessment Regulations pursuant to the *Nova Scotia Environment Act*. The Environmental Assessment Registration will be prepared in accordance with the *Guide to Preparing an EA Registration Document for Mining Developments in Nova Scotia* (NSE 2009). A Mi'kmaq Ecological Knowledge Study is also currently being undertaken by Membertou Geomatics.

Please find enclosed the Project Information Sheet and the corresponding Figure 1, which provide more details regarding the Project and the site location.

Feel free to contact the undersigned or the contacts listed on the Project Information Sheet with any comments, concerns, or questions you may have regarding the project or the upcoming



October 3, 2014
Chief Rufus Copage, Sipekne'katik (Shubenacadie) First Nation
Page 2 of 2

Reference: National Gypsum Mine Expansion, Milford, NS

Open House on October 22, 2014. A similar letter and invitation has also been extended to those in the copy list below.

Regards,

Stantec Consulting Ltd.

Kelley Fraser, MES
Environmental Assessment Project Manager
Phone: 902-468-7777
Fax: 902-468-9009
Kelley.fraser@stantec.com

Attachment: Open House Invitation
Project Information Sheet
Figure 1

- c. Bridget Tutty, Environmental Assessment Officer, Nova Scotia Environment
Twila Gaudet, Kwiilmu'kw Maw-klusuaqn Negotiation Office
Chief Gloade, Millbrook First Nation
Don Julian, Executive Director, The Confederacy of Mainland Mi'kmaq
Kim Paul, Environmental Services, Union of Nova Scotia Indians

fk v:\1215\active\121510xxx\121511228_national_gypsum_ea\reporting\aboriginal engagement\letter_chief copage.docx

SIPEKNE'KATIK
522 Church Street
Indian Brook, NS
B0N 1W0

Tel: 902.758.2049
Fax: 902.758.2017



Stantec Consulting Ltd.
Kelly Fraser
Environmental Assessment Project Manager
Kelley.fraser@stantec.com

December 1, 2014

Dear Ms. Fraser,

RE: National Gypsum Mine Expansion, Milford, NS (File # 121511228.300)

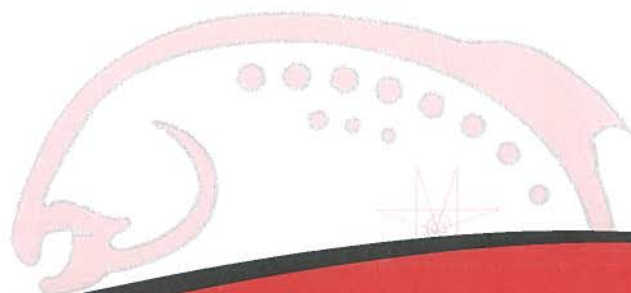
This letter is in response to your letter dated October 3, 2014 on the above noted matter.

Thank you for providing information on the proposed project, contact information and the invitation to the open house event.

Sincerely yours,


Chief Rufus Copage

cc. Bridget Tutty, Environmental Assessment Officer, Nova Scotia Environment





October 3, 2014
File: 121511228.300

Attention: Chief Robert Gloade, Millbrook First Nation

820 Willow St
Truro NS
B2N 5E5
bgloade@msn.com

Dear Chief Gloade,

Reference: National Gypsum Mine Expansion, Milford, NS

As you are aware, National Gypsum is proposing to extend the National Gypsum Mine near Milford Station, Nova Scotia. This letter is to provide you with additional information on the project. As well, National Gypsum would also like to take this opportunity to invite you to the Open House public drop-in meeting to be held at the Carrol's Corner Community Centre from 4 to 7 PM on October 22, 2014.

National Gypsum owns and operates a 301 ha mine in Milford Station, Halifax County, Nova Scotia (see Figure 1). The mine is operating under an Industrial Approval (Approval No.89-100) that was obtained from the Nova Scotia Environment (NSE) in 1989, pursuant to Division V of the *Activities Designation Regulations*. In July 2013, additional Non-Mineral Registration tracts were approved by the Minister of Natural Resources.

National Gypsum wishes to expand the existing operation by continuing to mine gypsum and the possibility of mining anhydrite rock (used mainly in the production of cement) in the future, while maintaining production rates at approximately current levels.

Stantec Consulting Ltd, on behalf of National Gypsum, is currently preparing the documentation required to register this Project as a Class I Undertaking under the Environmental Assessment Regulations pursuant to the *Nova Scotia Environment Act*. The Environmental Assessment Registration will be prepared in accordance with the *Guide to Preparing an EA Registration Document for Mining Developments in Nova Scotia* (NSE 2009). A Mi'kmaq Ecological Knowledge Study is also currently being undertaken by Membertou Geomatics.

Please find enclosed the Project Information Sheet and the corresponding Figure 1, which provide more details regarding the Project and the site location.

Feel free to contact the undersigned or the contacts listed on the Project Information Sheet with any comments, concerns, or questions you may have regarding the project or the upcoming



October 3, 2014
Chief Robert Gloade, Millbrook First Nation
Page 2 of 2

Reference: National Gypsum Mine Expansion, Milford, NS

Open House on October 22, 2014. A similar letter and invitation has also been extended to those in the copy list below.

Regards,

Stantec Consulting Ltd.

Kelley Fraser, MES
Environmental Assessment Project Manager
Phone: 902-468-7777
Fax: 902-468-9009
Kelley.fraser@stantec.com

Attachment: Open House Invitation
Project Information Sheet
Figure 1

- c. Bridget Tutty, Environmental Assessment Officer, Nova Scotia Environment
Twila Gaudet, Kwilmu'kw Maw-klusuaqn Negotiation Office
Chief Copage, Sipekne'katik (Shubenacadie) First Nation
Don Julian, Executive Director, The Confederacy of Mainland Mi'kmaq
Kim Paul, Environmental Services, Union of Nova Scotia Indians

fk v:\1215\active\121510xxx\121511228_national_gypsum_ea\reporting\aboriginal engagement\letter_chief gloade_millbrook.docx



October 3, 2014
File: 121511228.300

Attention: Don Julian, Executive Director, The Confederacy of Mainland Mi'kmaq

57 Martin Crescent
Millbrook NS
B2N 6N7
don@cmmns.com

Dear Mr. Julian,

Reference: National Gypsum Mine Expansion, Milford, NS

National Gypsum is proposing to extend the National Gypsum Mine near Milford Station, Nova Scotia. This letter is to provide you with information on the project. As well, National Gypsum would also like to take this opportunity to invite you to the Open House public drop-in meeting to be held at the Carrol's Corner Community Centre from 4 to 7 PM on October 22, 2014.

National Gypsum owns and operates a 301 ha mine in Milford Station, Halifax County, Nova Scotia (see Figure 1). The mine is operating under an Industrial Approval (Approval No.89-100) that was obtained from the Nova Scotia Environment (NSE) in 1989, pursuant to Division V of the *Activities Designation Regulations*. In July 2013, additional Non-Mineral Registration tracts were approved by the Minister of Natural Resources.

National Gypsum wishes to expand the existing operation by continuing to mine gypsum and the possibility of mining anhydrite rock (used mainly in the production of cement) in the future, while maintaining production rates at approximately current levels.

Stantec Consulting Ltd, on behalf of National Gypsum, is currently preparing the documentation required to register this Project as a Class I Undertaking under the Environmental Assessment Regulations pursuant to the *Nova Scotia Environment Act*. The Environmental Assessment Registration will be prepared in accordance with the *Guide to Preparing an EA Registration Document for Mining Developments in Nova Scotia* (NSE 2009). A Mi'kmaq Ecological Knowledge Study is also currently being undertaken by Membertou Geomatics.

Please find enclosed the Project Information Sheet and the corresponding Figure 1, which provide more details regarding the Project and the site location.

Feel free to contact the undersigned or the contacts listed on the Project Information Sheet with any comments, concerns, or questions you may have regarding the project or the upcoming Open House on October 22, 2014. A similar letter and invitation has also been extended to those in the copy list below.



October 3, 2014

Don Julian, Executive Director, The Confederacy of Mainland Mi'kmaq

Page 2 of 2

Reference: National Gypsum Mine Expansion, Milford, NS

Regards,

Stantec Consulting Ltd.

Kelley Fraser, MES
Environmental Assessment Project Manager
Phone: 902-468-7777
Fax: 902-468-9009
Kelley.fraser@stantec.com

Attachment: Open House Invitation
Project Information Sheet
Figure 1

c. Bridget Tutty, Environmental Assessment Officer, Nova Scotia Environment
Twila Gaudet, Kwilmu'kw Maw-klusuaqn Negotiation Office
Chief Copage, Sipekne'katik (Shubenacadie) First Nation
Chief Gloade, Millbrook First Nation
Kim Paul, Environmental Services, Union of Nova Scotia Indians

fk v:\1215\active\121510xxx\121511228_national_gypsum_ea\reporting\aboriginal engagement\letter_donjulian_cmm.docx



October 3, 2014
File: 121511228.300

Attention: Kim Paul, Environmental Services, Union of Nova Scotia Indians

201 Churchill Drive, Suite 304
Membertou NS
B1S 0H1
Environment@unsi.ns.ca

Dear Kim Paul, Environmental Services, Union of Nova Scotia Indians,

Reference: National Gypsum Mine Expansion, Milford, NS

National Gypsum is proposing to extend the National Gypsum Mine near Milford Station, Nova Scotia. This letter is to provide you with information on the project. As well, National Gypsum would also like to take this opportunity to invite you to the Open House public drop-in meeting to be held at the Carrol's Corner Community Centre from 4 to 7 PM on October 22, 2014.

National Gypsum owns and operates a 301 ha mine in Milford Station, Halifax County, Nova Scotia (see Figure 1). The mine is operating under an Industrial Approval (Approval No.89-100) that was obtained from the Nova Scotia Environment (NSE) in 1989, pursuant to Division V of the *Activities Designation Regulations*. In July 2013, additional Non-Mineral Registration tracts were approved by the Minister of Natural Resources.

National Gypsum wishes to expand the existing operation by continuing to mine gypsum and the possibility of mining anhydrite rock (used mainly in the production of cement) in the future, while maintaining production rates at approximately current levels.

Stantec Consulting Ltd, on behalf of National Gypsum, is currently preparing the documentation required to register this Project as a Class I Undertaking under the Environmental Assessment Regulations pursuant to the Nova Scotia *Environment Act*. The Environmental Assessment Registration will be prepared in accordance with the *Guide to Preparing an EA Registration Document for Mining Developments in Nova Scotia* (NSE 2009). A Mi'kmaq Ecological Knowledge Study is also currently being undertaken by Membertou Geomatics.

Please find enclosed the Project Information Sheet and the corresponding Figure 1, which provide more details regarding the Project and the site location.

Feel free to contact the undersigned or the contacts listed on the Project Information Sheet with any comments, concerns, or questions you may have regarding the project or the upcoming



October 3, 2014
Kim Paul, Environmental Services, Union of Nova Scotia Indians
Page 2 of 2

Reference: National Gypsum Mine Expansion, Milford, NS

Open House on October 22, 2014. A similar letter and invitation has also been extended to those in the copy list below.

Regards,

Stantec Consulting Ltd.

Kelley Fraser, MES
Environmental Assessment Project Manager
Phone: 902-468-7777
Fax: 902-468-9009
Kelley.fraser@stantec.com

Attachment: Open House Invitation
Project Information Sheet
Figure 1

- c. Bridget Tutty, Environmental Assessment Officer, Nova Scotia Environment
- Twila Gaudet, Kwilmu'kw Maw-klusuaqn Negotiation Office
- Chief Copage, Sipekne'katik (Shubenacadie) First Nation
- Chief Gloade, Millbrook First Nation
- Don Julian, Executive Director, The Confederacy of Mainland Mi'kmaq

fk v:\1215\active\121510xxx\121511228_national_gypsum_ea\reporting\aboriginal engagement\letter_kimpaul_unsi.docx



1707 Highway #2
Milford Station
Nova Scotia
B0N 1Y0
Phone: 902 758 3256
Fax: 902 758 3955

October 8, 2014
File: 121511228.300

Attention: Jennifer MacGillivray, B.Sc. MBA, Benefits Officer

Kwilmu'kw Maw-klusuaqn Negotiation Office (KMKNO)
851 Willow Street
Truro, NS B2N 6N8
jmacgillivray@mikmaqrights.com

Dear Jennifer MacGillivray, Benefits Officer, KMKNO

Reference: National Gypsum Mine Extension, Milford, NS

Introduction

National Gypsum (Canada) Ltd. is proposing to extend the National Gypsum Mine near Milford Station, Nova Scotia. National Gypsum and Stantec met with Twila Gaudet and Melissa Nevin from the Kwilmu'kw Maw-klusuaqn Negotiation Office (KMKNO) on September 4, 2014. At that meeting, Ms. Gaudet suggested that we reach out and provide you with information on the Project and what we have done or plan to do regarding initiatives to involve the Mi'kmaq of Nova Scotia.

Project Overview

National Gypsum owns and operates a 301 ha mine in Milford Station, Halifax County, Nova Scotia (see Figure 1). The mine is operating under an Industrial Approval (Approval No.89-100) that was obtained from the Nova Scotia Environment (NSE) in 1989, pursuant to Division V of the *Activities Designation Regulations*. In July 2013, additional Non-Mineral Registration tracts were approved by the Minister of Natural Resources. National Gypsum wishes to expand the existing operation by continuing to mine gypsum and the possibility of mining anhydrite rock (used mainly in the production of cement) in the future, while maintaining production rates at approximately current levels.

The Project will be registered with Nova Scotia Environment as a Class I Undertaking under the Environmental Assessment Regulations pursuant to the Nova Scotia *Environment Act*. This document is currently being prepared by Stantec Consulting

Ltd. A Mi'kmaq Ecological Knowledge Study is also currently being undertaken by Membertou Geomatics.

Please find enclosed the Project Information Sheet and the corresponding Figure 1, which provide more details regarding the Project and the site location.

Initiatives (to-date) to Involve the Mi'kmaq of Nova Scotia

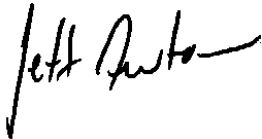
1. National Gypsum met with the Human Resources Director at Sipekne'katik (Shubenacadie) First Nation and offered to provide pre-employment training to members of their community through a program sponsored by the Band.
2. National Gypsum has/will provide donations on a case by case basis to the Shubenacadie First Nation, as well as other community entities in our area.
3. National Gypsum had a telephone conversation with Chief Gloade from the Millbrook First Nation to discuss the Project and offered to sit down and review. At this time Chief Gloade has declined.
4. National Gypsum has a signed Memorandum of Understanding (MOU) with the Native Council of Nova Scotia, where National Gypsum is willing to provide pre-apprentice training and work experience.

Closing

Feel free to contact the undersigned with any comments, concerns, or questions you may have regarding the project.

Regards,

National Gypsum (Canada) Ltd.



Jeff Newton
National Gypsum Plant Manager
Phone: 902-883-2224 x 227
Fax: 902-758-3955
JeffN@NationalGypsum.com

Attachment: Project Information Sheet
Figure 1

- c. Bridget Tutty, Environmental Assessment Officer, Nova Scotia Environment
Twila Gaudet, Kwilmu'kw Maw-klusuaqn Negotiation Office
Melissa Nevin, Kwilmu'kw Maw-klusuaqn Negotiation Office

National Gypsum Mine Extension Project

Project Information Sheet

Project Overview

National Gypsum proposes to extend its mining activities at the existing facility near Milford Station, Nova Scotia (refer to Figure 1 on reverse). The mineral deposit that National Gypsum has been mining for nearly 60 years, producing over 134 million tons, is continuous and runs for at least four kilometers in the northeast direction. The current operation is approximately 301 hectares in area. The proposed extension will incorporate land northeast of the existing mine to increase the total size of the operation by approximately 135 hectares. The mine currently supplies gypsum rock for three wallboard plants in the Maritimes and eastern US. Depending on market demand, the proposed activities will take place over an extended period of time until the material is exhausted.

Proposed project activities will be consistent with current mining operations. The mine is operating under an Industrial Approval that was obtained from Nova Scotia Environment (NSE) in 1989, pursuant to Division V of the *Activities Designation Regulations*. In July 2013, additional Non-Mineral Registration tracts were approved by the Minister of Natural Resources.

Blasting, crushing and stockpiling are proposed to take place at the extension site. Daily blasting will be conducted by a licensed blasting employee with monitoring conducted and reported. After blasting, stationary crushing equipment will process the blasted material. Material will be stockpiled at the site until it is transported to markets via rail. It is anticipated that production and rail transportation activity will be similar to current conditions and may vary with market demand for the gypsum. The proposed operating schedule is consistent with the current operating schedule.

Environmental Assessment Process

National Gypsum is required to register this project as a Class I Undertaking pursuant to the *Nova Scotia Environment Act* and *Environmental Assessment Regulations*. The environmental assessment registration is currently being prepared by environmental consultant Stantec, on behalf of National Gypsum, to fulfill these regulatory requirements. The Environmental Assessment Registration will be prepared in accordance with the *Guide to Preparing an EA Registration Document for Mining Developments in Nova Scotia* (NSE 2009).

Other relevant provincial regulations include the *Activities Designation Regulations*, which requires an Industrial Approval amendment from Nova Scotia Environment for the mining operation, and the *General Blasting Regulations* made pursuant to the *Nova Scotia Occupational Health and Safety Act* (1996).

The environmental assessment registration will evaluate potential environmental effects of the expansion and identify appropriate mitigation and monitoring where necessary to reduce any adverse effects.

The environmental assessment registration document will be available for public review and comment once it is filed with NSE.

Environmental Document Components

The environmental registration document focuses on those aspects of the environment that are considered to be of most concern. Components to be evaluated include:

- rare and sensitive flora;
- wildlife;
- wetlands;
- surface water resources;
- groundwater resources;
- archaeological and heritage resources;
- atmospheric environment (includes dust and noise);
- socio-economic environment; and
- Mi'kmaq traditional land use.

Potential effects of mining activities on these components will be addressed in the registration document.

The proposed extension will include the conservation of several wetlands in a large ecological buffer area. The proposed extension will be phased to reduce disturbance, and the mine will be progressively rehabilitated. Based on the proposed mitigative measures and compliance with government guidelines and approvals, significant adverse environmental or socio-economic effects from the mine expansion are not anticipated.

Community Involvement

National Gypsum is proud of its community involvement, and annually provides financial support to the following organizations in the area: Lions Club, Carroll's Corner Community Association, Mission to Seafarers, United Church, and CHAPS. The company has also donated land on the border of the property to be developed into a walking trail, provides scholarship funds to the schools in the area, and has in the past donated pieces of heavy equipment to be used on different community projects.

Contacts

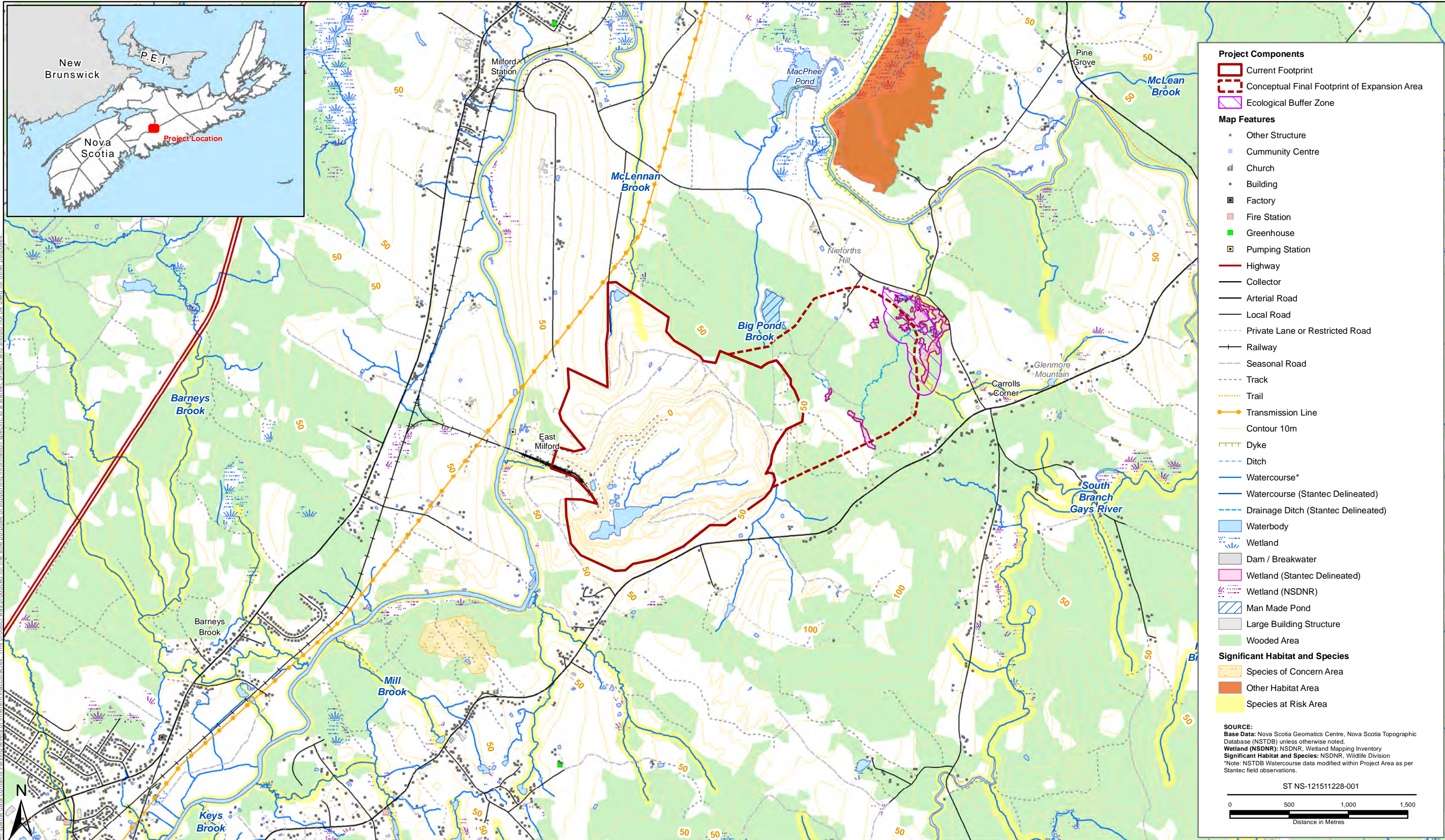
If you have any questions or concerns about this project please contact:

National Gypsum (Canada) Ltd.

Jeff Newton, Plant Manager
1707 Highway 2, Milford Station, NS B0N 1Y0
Tel: (902) 883-2224 x 227
E-mail: JeffN@NationalGypsum.com

Stantec Consulting Ltd.

Kelley Fraser, MES, EA Project Manager
102-40 Highfield Park Dr., Dartmouth, NS B3A 0A3
Tel: (902) 468-7777
E-mail: kelley.fraser@stantec.com



PREPARED BY:	R Sutcliffe
REVIEWED BY:	C Shupe
CLIENT	

National Gypsum Mine Extension

Site Overview

FIGURE NO.:	1
DATE:	Oct 07, 2014