

## **Nova Scotia Monthly COVID-19 Epidemiologic Summary: 09AUG2022**

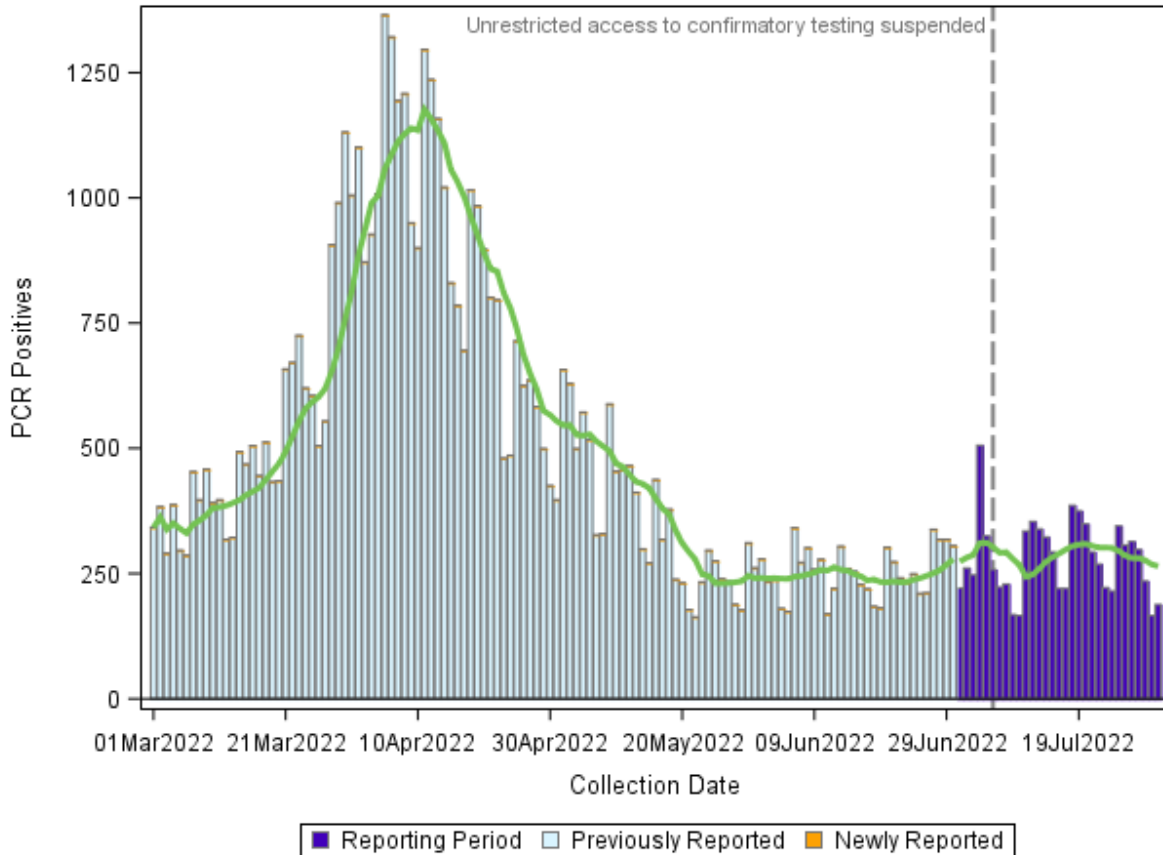
Public Health Branch  
Nova Scotia Department of Health and Wellness

### **Highlights:**

- A total of 8,650 PCR positive results, 225 hospitalizations and 9 deaths from COVID-19 were observed during the month of July 2022.
- The number of PCR positive results, and hospitalizations increased in July compared to June whereas the number of deaths decreased.
- Of the nine deaths that occurred in July, six (67%) were in people aged 70 years and older and three (33%) were residing in a long-term care facility.
- Age and lack of vaccination continue to be associated with severe outcomes:
  - Nova Scotians aged 70+ have been hospitalized at nearly 14 times the rate of those 18-49 years of age and the rate of death is 166 times higher compared to those under 50 years of age.
  - Unvaccinated Nova Scotians were hospitalized at nearly four times the rate and died more than three times the rate as those with three or more doses.

## COVID-19 Cases

**Figure 1: Number and seven-day moving average of PCR positive results by collection date, March 1 to July 31, 2022 (N=70,440)**

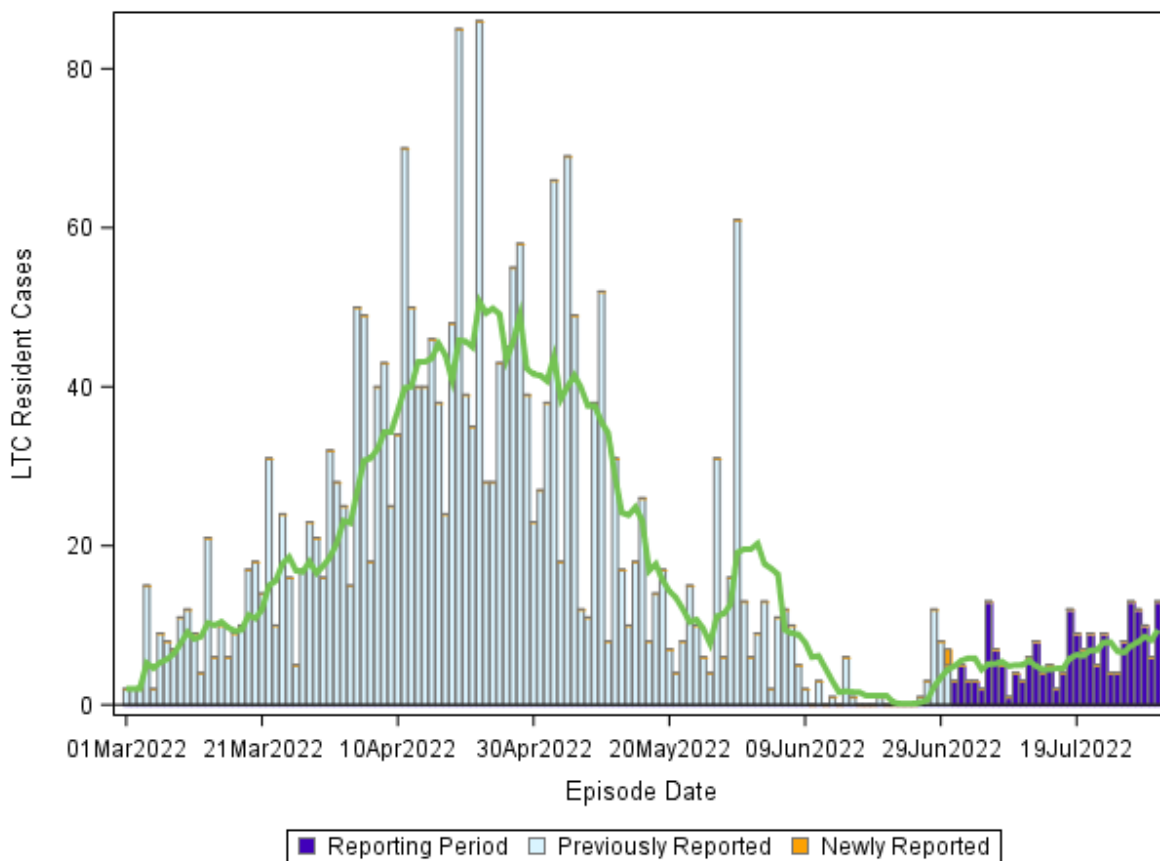


Data source: PPHLN

Notes:

- Laboratory tests are also referred to as PCR (polymerase chain reaction) tests
- The previous 3 days should be interpreted with caution. PCR positive results during this timeframe may rise as labs continue to be processed
- Access to PCR tests are restricted to eligible populations as outlined in the following link: <https://www.nshealth.ca/coronavirustesting>.

**Figure 2: Number and seven-day moving average of COVID-19 cases among long-term care residents by episode date, March 1 to July 31, 2022 (N= 2661)**



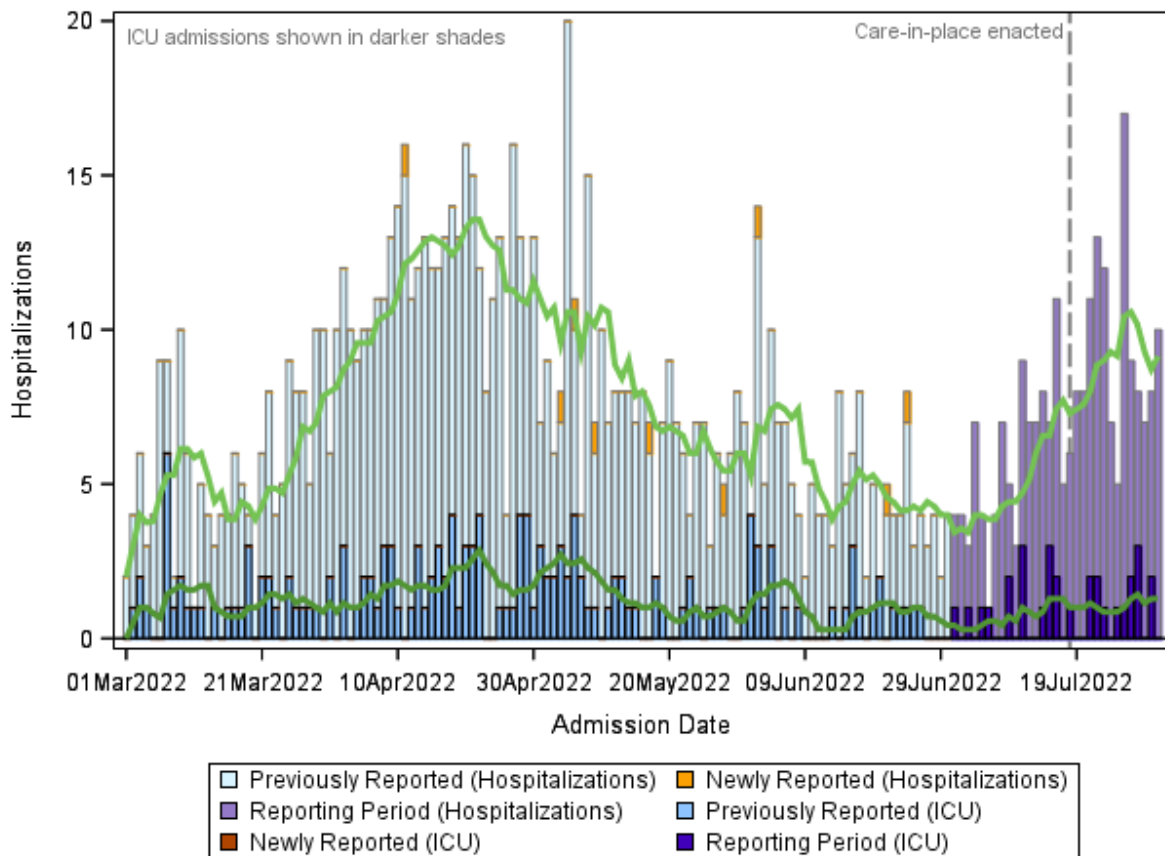
Data source: Panorama

Notes:

- The previous 7 days should be interpreted with caution, as cases can take several days to be entered into Panorama.

## COVID-19 Serious Outcomes

**Figure 3: Daily COVID-19 hospital and ICU admissions by admission date, March 1 to July 31, 2022 (N=1136)**



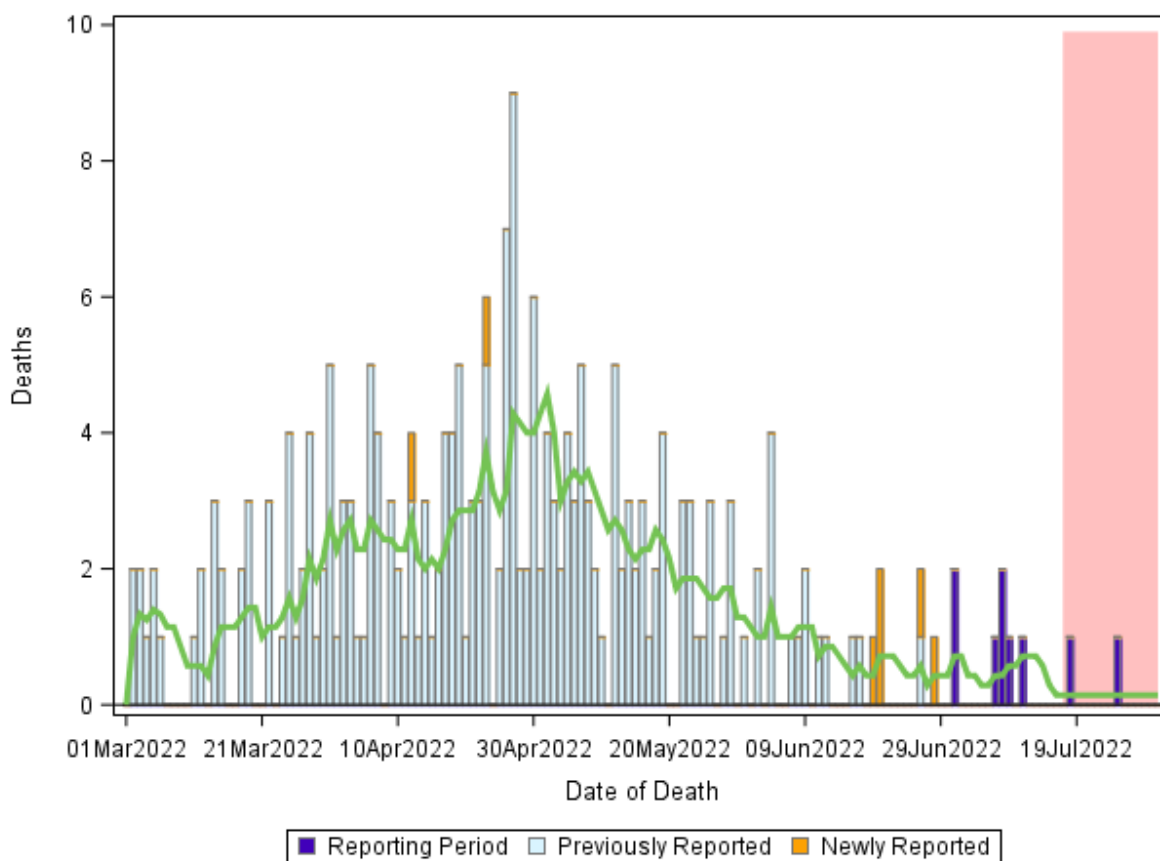
Data source: PPHLN, Meditech and STAR

Note:

- Care-in-place: All patients are treated in the unit or facility of the hospital that is appropriate for their care, regardless of COVID-19 status.
- The previous 5 days should be interpreted with caution. Case counts during this timeframe may rise as individuals are identified and tested and as tests are processed

# Novel Coronavirus (COVID-19)

**Figure 4: Number and seven-day moving average of COVID-19 deaths by date of death, March 1 to July 31, 2022 (N=214)**



Data source: Panorama

Notes:

- Deaths are subject to a lag in reporting. The previous 14 days (red area) should be interpreted with caution.

**Table 1: PCR positive results, hospitalizations and deaths**

	Number in reporting month	Number in previous month	Change from last month	March 1 2022-July 31 2022 totals	Age range (years)	Median age (years)	Median LoS (days)
<b>PCR Positives</b>	8650	7570	1080	70440	0 - 110	45	n/a
<b>Hospitalizations</b>	225	148	77	1136	0 - 103	73	6.3
<b>Deaths</b>	9*	20*	-11	214	42 - 104	83	n/a

Data sources: PCR positive results – Provincial Public Health Lab Network; Hospitalizations – PPHLN, Meditech, STAR; Deaths – Panorama

Notes:

- PCR refers to polymerase chain reaction tests performed in a lab
- LoS means length of stay

\* Deaths are subject to a lag in reporting. The number of deaths reported in the current and previous months should be interpreted with caution.

**Table 2: Hospitalization\* and death rates by age group, March 1, 2022 to July 31, 2022 (Wave 6)**

	Number	Crude rate per 100K	Relative Risk
<b>Hospitalizations</b>			
<18 years	41	24.6	0.8
18-49 years**	119	31.1	1.0
50-69 years	298	102.1	3.3
70+ years	678	441.9	14.2
<b>Deaths</b>			
<50 years**	4	0.7	1.0
50-69 years	25	8.6	11.8
70+ years	185	120.6	165.7

Data sources: Hospitalizations - PPHLN, Meditech and STAR; Deaths – Panorama; Denominator - MSI Eligible Nova Scotians

Notes:

- \* Hospitalizations for individuals missing age are excluded from the analysis (counts, crude rates, age-adjusted rates, risk reduction)
- \*\* = Denotes reference category. All risks are presented in comparison to the reference category. Comparisons are made by dividing the age-specific rates in the age category of interest to the age-specific rates in the reference category
- To more accurately estimate vaccine coverage in Nova Scotia, the province is switching from using Statistics Canada population estimates to the number of Nova Scotians eligible for MSI (the province's health insurance card) as the denominator for estimating both per capita rates and vaccine coverage.

**Table 3: Age-adjusted hospitalization\* and death rates by vaccine status, March 1, 2022 to July 31, 2022 (Wave 6)**

Vaccination Status	Number	Crude Rate per 100k Person-Years	Age-Adjusted Rate per 100k Person-Years
<b>Hospitalizations</b>			
<b>Unvaccinated</b>	220	346.8	756.2
<b>2 Doses</b>	252	201.0	412.2
<b>3+ Doses</b>	662	310.7	204.2
<b>Deaths</b>			
<b>Unvaccinated</b>	31	48.9	144.6
<b>2 Doses</b>	39	31.1	94.1
<b>3+ Doses</b>	142	66.7	41.4

Data sources: Hospitalizations - PPHLN, Meditech and STAR; Deaths – Panorama; Denominator - MSI Eligible Nova Scotians

Notes:

- \*Hospitalizations for individuals missing age are excluded from the analysis (counts, crude rates, age-adjusted rates, risk reduction)
- A person is considered unvaccinated when they have zero doses of any COVID-19 vaccine
- A person is considered to have two doses 14 or more days after the second dose of any vaccine OR 14 or more days after one dose of Johnson & Johnson vaccine OR are within 14 days of receiving a third dose of any COVID-19 vaccine
- A person is considered to have three or more doses 14 or more days after a third dose of any COVID-19 vaccine
- Due to small number of events occurring among those just one dose, that group is not included in this analysis.
- To more accurately estimate vaccine coverage in Nova Scotia, the province is switching from using Statistics Canada population estimates to the number of Nova Scotians eligible for MSI (the province's health insurance card) as the denominator for estimating both per capita rates and vaccine coverage.



# Novel Coronavirus (COVID-19)

**Table 4: Summary of confirmed and probable COVID-19 cases and outcomes, March 1, 2022 to July 31, 2022 (Wave 6)**

	Province-Wide
<b>Number of cases</b>	70,440
<b>Hospitalized (%)</b>	1.6%
<b>ICU (%)</b>	0.3%
<b>Deceased (%)</b>	0.3%

Data sources: PCR positives PPHLN; Hospitalizations Meditech and STAR ; Deaths Panorama

## Data Sources and Notes:

### Panorama

- Data are valid to the day of the report at 04:00
- Data presented in this report contain the information available at the time of data extraction. It may be incomplete pending follow-up. As more information becomes available, it will be included in subsequent reports.

### Provincial Public Health Laboratory Network

- Data are valid to the day of the report at 05:30.
- Data presented in this report contain the information available at the time of data extraction. It may be incomplete pending follow-up. As more information becomes available, it will be included in subsequent reports

### Meditech and STAR (Nova Scotia Health)

- Data are valid to the day of the report at 04:00
- Data are based on positive lab results and reflect patients with a valid health card number at the time of testing or admission
- Data presented in this report contain the information available at the time of data extraction. It may be incomplete pending follow-up. As more information becomes available, it will be included in subsequent reports
- Includes patients that are assumed to be admitted for COVID-related treatment based on inpatient location

## COVID-19 Case Definitions

<https://www.canada.ca/en/public-health/services/diseases/2019-novel-coronavirus-infection/health-professionals/national-case-definition.html>