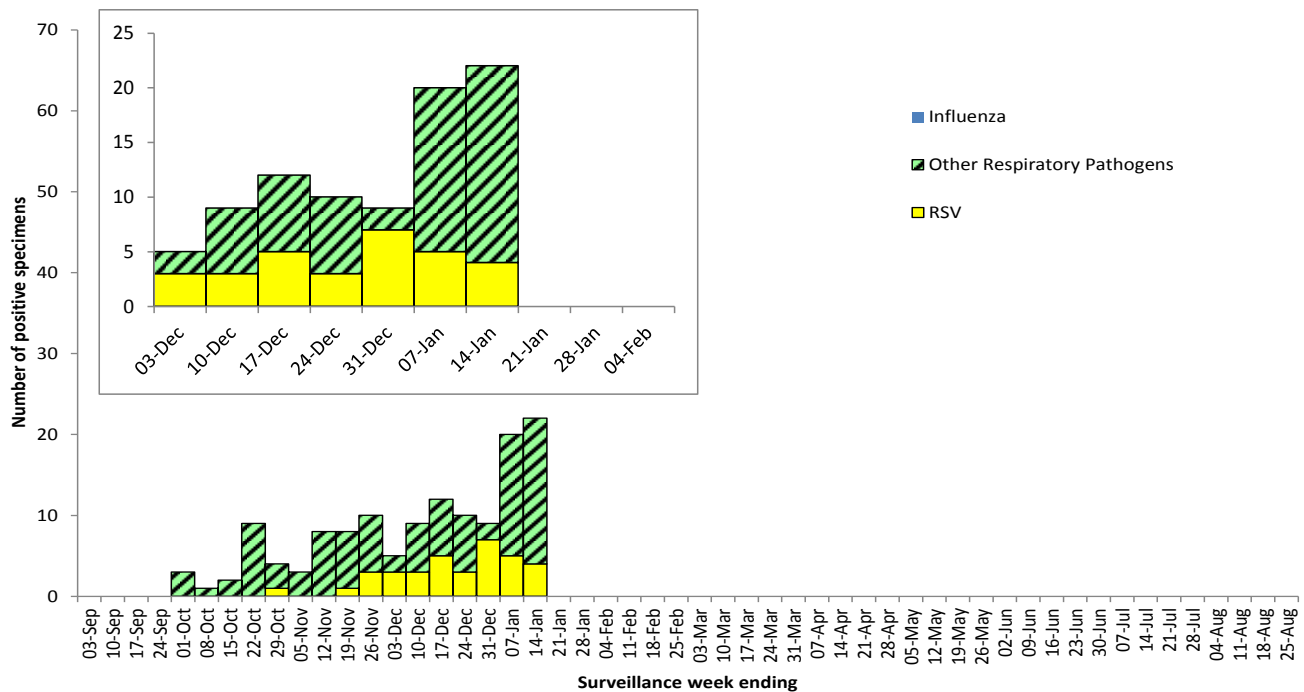


Summary of Nova Scotia surveillance findings, for the period ending January 14, 2012:

- There was no influenza activity reported for week 2.
- Other respiratory pathogen activity continues. Positive results were received for coronavirus, metapneumovirus, mycoplasma pneumonia, parainfluenza, rhinovirus, and RSV.

Figure 1: Summary of laboratory detected circulating respiratory pathogens, Nova Scotia, 2011–2012

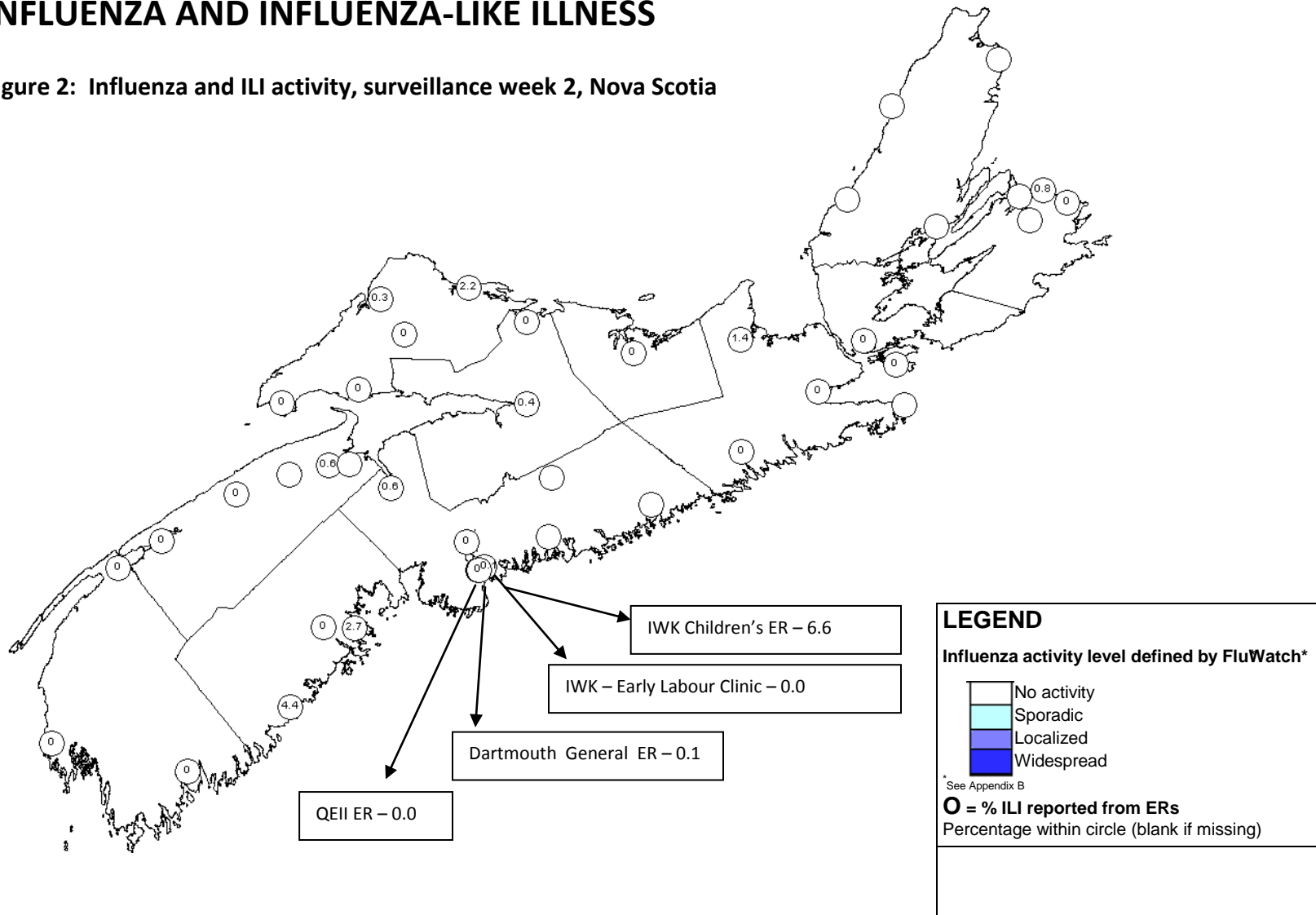


RESPIRATORY WATCH

Week (January 8 to January 14, 2012)

INFLUENZA AND INFLUENZA-LIKE ILLNESS

Figure 2: Influenza and ILI activity, surveillance week 2, Nova Scotia



RESPIRATORY WATCH

Week (January 8 to January 14, 2012)

Figure 3: Number of reported lab-confirmed influenza cases by type and report week, Nova Scotia, 2011–2012

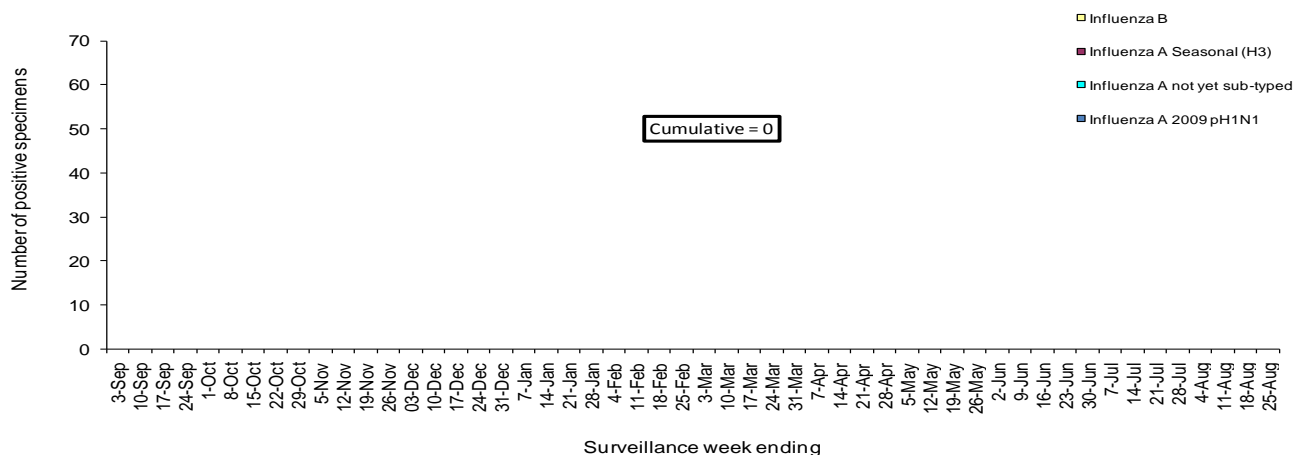
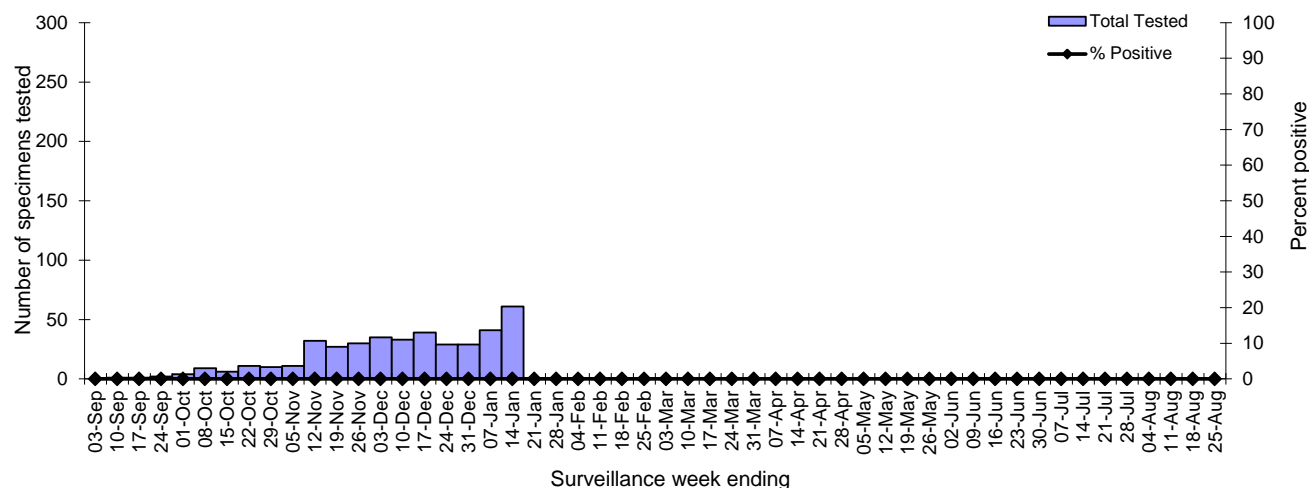


Figure 4: Number of specimens tested for influenza and percent positive, Nova Scotia Provincial Public Health Laboratory Network, 2011–2012*



*Data presented in this figure refers to week specimen was tested.

Table 1: Influenza case counts by DHA, current surveillance week and cumulative, Nova Scotia, 2011–2012

	DHA 1	DHA 2	DHA 3	DHA 4	DHA 5	DHA 6	DHA 7	DHA 8	DHA 9	Nova Scotia
Influenza A 2009 pH1N1*										
Current Week	0	0	0	0	0	0	0	0	0	0
Cumulative 2010 - 2011	0	0	0	0	0	0	0	0	0	0
Influenza A (not yet sub-typed)*										
Current Week	0	0	0	0	0	0	0	0	0	0
Cumulative 2010 - 2011	0	0	0	0	0	0	0	0	0	0
Influenza A Seasonal (H3)										
Current Week	0	0	0	0	0	0	0	0	0	0
Cumulative 2010 - 2011	0	0	0	0	0	0	0	0	0	0
Influenza B										
Current Week	0	0	0	0	0	0	0	0	0	0
Cumulative 2010 - 2011	0	0	0	0	0	0	0	0	0	0

RESPIRATORY WATCH

Week (January 8 to January 14, 2012)

Figure 5: Influenza rate per 100,000 population by type and age group, cumulative, Nova Scotia, 2011–2012

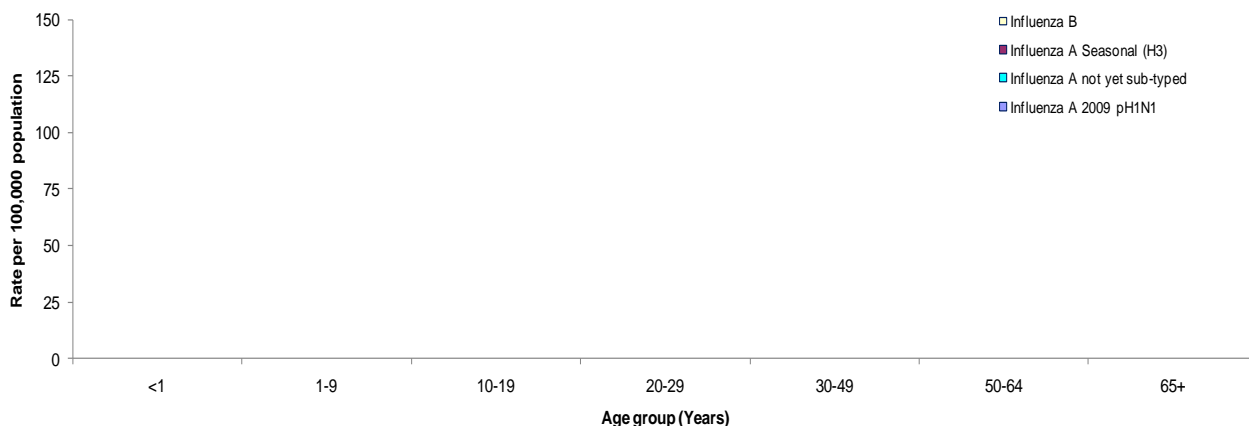


Figure 6: Influenza rate per 100,000 population by type and DHA, cumulative, Nova Scotia, 2011–2012

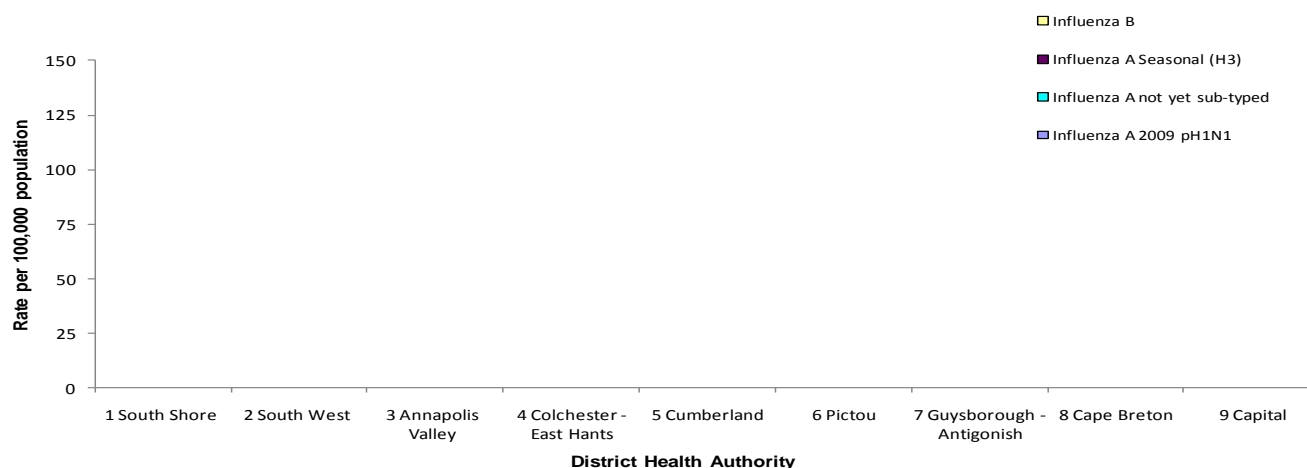


Table 2: Number of influenza hospitalizations by type and report week, Nova Scotia, 2011–2012

	Hospitalized	ICU	Total
Influenza A 2009 pH1N1			
Current Week	0	0	0
Cumulative 2011 - 2012	0	0	0
Influenza A (not yet sub-typed)			
Current Week	0	0	0
Cumulative 2011 - 2012	0	0	0
Influenza A Seasonal (H3)			
Current Week	0	0	0
Cumulative 2011 - 2012	0	0	0
Influenza B			
Current Week	0	0	0
Cumulative 2011 - 2012	0	0	0
Current Week Total	0	0	0
Season Total	0	0	0

* Note that Hospitalized cases exclude ICU admissions

RESPIRATORY WATCH

Week (January 8 to January 14, 2012)

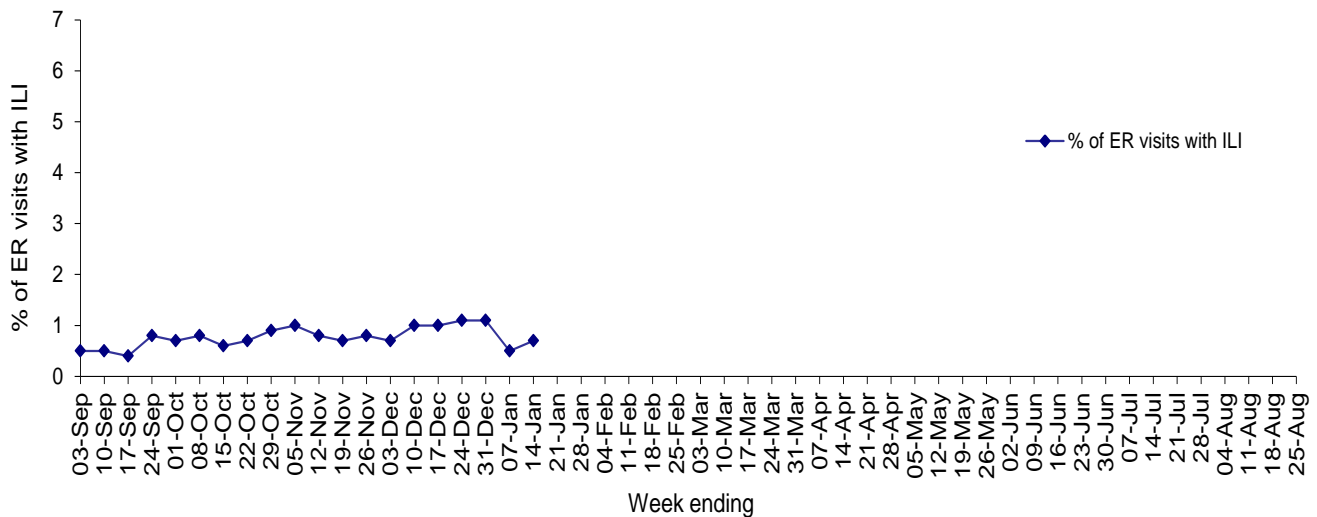
Table 3: ILI reporting from emergency departments and FluWatch sentinel physicians, Nova Scotia

	ER SURVEILLANCE		SENTINEL SURVEILLANCE*	
	%ILI	Reporting ERs	%ILI	Reporting Sentinels
DHA 1	1.9	3 of 3	0.0	1 of 4
DHA 2	0.0	3 of 3	–	0 of 1
DHA 3	0.5	3 of 5	–	0 of 1
DHA 4	0.3	2 of 2	–	0 of 1
DHA 5	0.4	5 of 5	–	0 of 2
DHA 6	0.5	1 of 1	–	0 of 2
DHA 7	0.7	7 of 6	3.8	1 of 3
DHA 8	0.3	2 of 8	0.0	1 of 3
DHA 9	0.1	6 of 7	0.0	1 of 3
IWK	4.8	1 of 1		
Nova Scotia (excl. IWK)†	0.4	32 of 40	80.0%	
Nova Scotia (incl. IWK)	0.7	33 of 41	80.5%	4 of 18 22.2%

*Flu watch sentinels

†Excludes the children's ER from IWK

Figure 7: Percentage of ER visits with ILI, Nova Scotia, 2011–2012



RESPIRATORY WATCH

Week (January 8 to January 14, 2012)

RESPIRATORY SYNCYTIAL VIRUS (RSV)

Figure 8: Number of positive RSV specimens by report week, Nova Scotia, 2011–2012

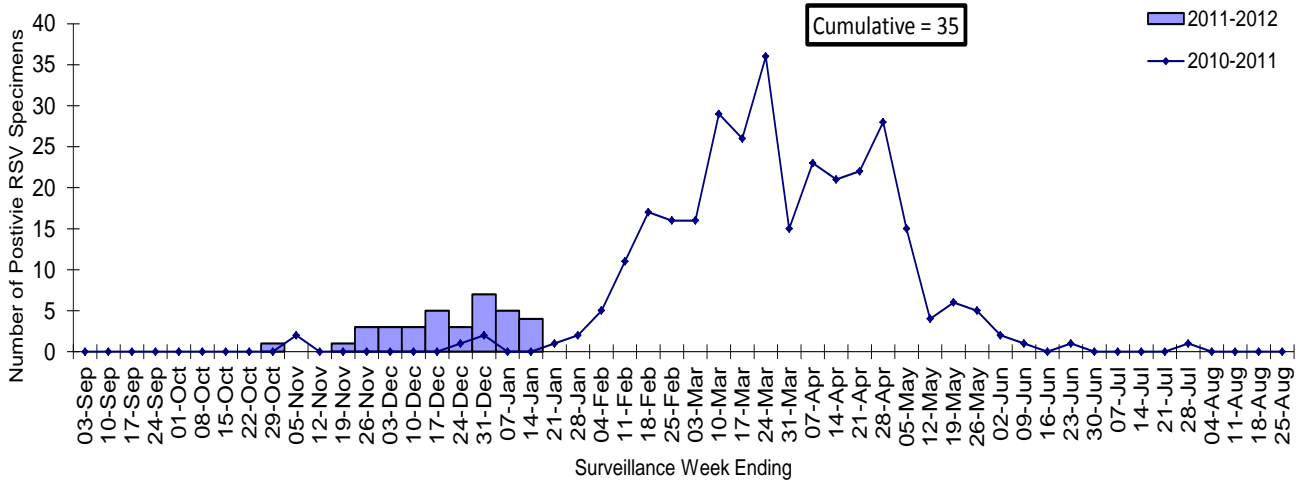
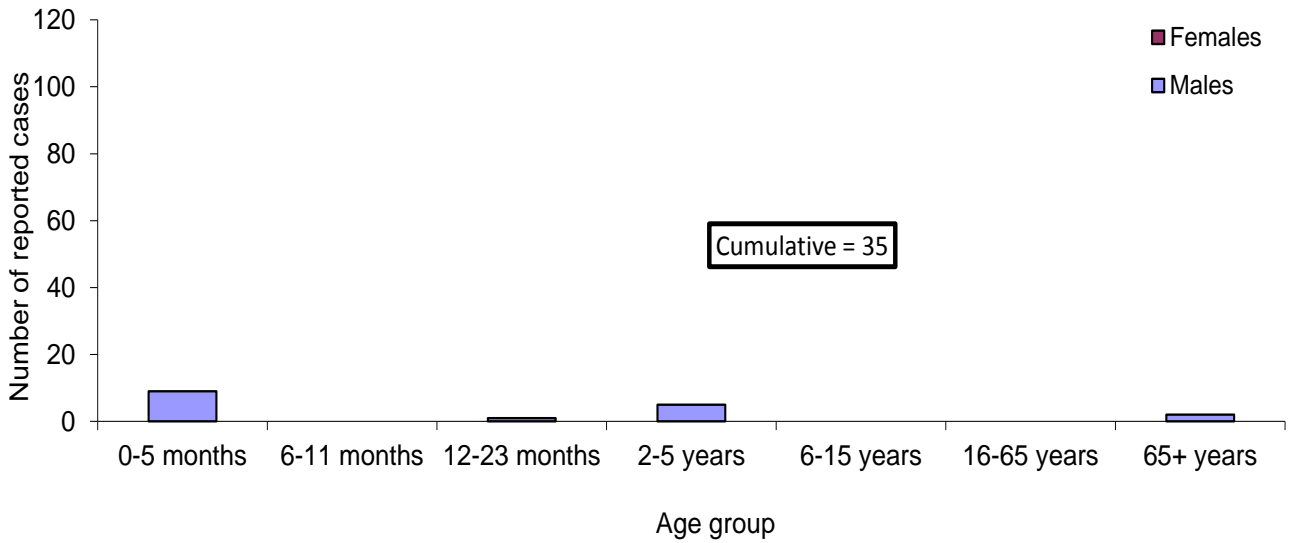


Figure 9: Cumulative number of positive RSV specimens by age group and sex, Nova Scotia, 2011-2012



RESPIRATORY WATCH

Week (January 8 to January 14, 2012)

OTHER RESPIRATORY PATHOGENS

Table 4: Total number of specimens tested and number (%) positive for other respiratory pathogens, by report week and cumulative season, Nova Scotia, 2011–2012

Number and percent positive for:	Surveillance Week			Cumulative Season-to-Date Totals		
	n tested	n positive	% positive	n tested	n positive	% positive
Adenovirus	45	0	0.0	317	2	0.6
Bocavirus	45	0	0.0	317	0	0.0
Chlamydomphila pneumoniae	4	0	0.0	104	0	0.0
Coronavirus	45	4	8.9	317	9	2.8
Enterovirus	45	0	0.0	317	1	0.3
Metapneumovirus	45	1	2.2	317	1	0.3
Mycoplasma pneumoniae	4	1	25.0	104	20	19.2
Parainfluenza	45	3	6.7	317	23	7.3
Pertussis	4	0	0.0	55	0	0.0
Respiratory syncytial virus A	45	1	2.2	310	5	1.6
Respiratory syncytial virus B	45	0	0.0	310	0	0.0
Respiratory syncytial virus not typed	9	3	33.3	149	30	20.1
Rhinovirus	45	9	20.0	317	44	13.9

RESPIRATORY WATCH

Week (January 8 to January 14, 2012)

APPENDIX: Definitions used in Influenza Surveillance, 2011-2012

1) ILI in the general population:

Acute onset of respiratory illness with fever and cough and with one or more of the following - sore throat, arthralgia, myalgia, or prostration which is likely due to influenza. In children under 5, gastrointestinal symptoms may also be present. In patients under 5 or 65 and older, fever may not be prominent.

2) Outbreaks of influenza / ILI by setting:

Schools and Daycares:

Greater than 10% absenteeism (or absenteeism that is higher (e.g. >5-10%) than expected level as determined by school or public health authority) which is likely due to ILI. Note: it is recommended that ILI school outbreaks be laboratory confirmed at the beginning of influenza season as it may be the first indication of community transmission in an area.

Residential institutions:

Two or more cases of ILI within a seven-day period, including at least one laboratory confirmed case. Institutional outbreaks should be reported within 24 hours of identification. Residential institutions include but not limited to long-term care facilities (LTCF) and prisons.

Other Settings:

Two or more cases of ILI within a seven-day period, including at least one laboratory confirmed case; i.e. workplace, closed communities.

3) National FluWatch Definitions for Influenza Activity Levels:

Influenza activity levels are defined as:

- | | | |
|-----|---------------------|--|
| 1 = | No activity: | i.e. no laboratory-confirmed influenza detections in the reporting week, however, sporadically occurring ILI* may be reported |
| 2 = | Sporadic: | sporadically occurring ILI* and lab confirmed influenza detection(s) with NO ILI/influenza outbreaks detected within the influenza surveillance region† |
| 3 = | Localized: | evidence of increased ILI* and lab confirmed influenza detection(s) together with outbreaks in schools, hospitals, residential institutions and/or other types of facilities occurring in less than 50% of the influenza surveillance region(s) † |
| 4 = | Widespread: | evidence of increased ILI* and lab confirmed influenza detection(s) together with outbreaks in schools, hospitals, residential institutions and/or other types of facilities occurring in greater than or equal to 50% of the influenza surveillance region(s) † |

* ILI data may be reported through sentinel physicians, emergency room visits or health line telephone calls.

† Sub-regions within the province or territory as defined by the provincial/territorial epidemiologist.

RESPIRATORY WATCH

Week (January 8 to January 14, 2012)

- 4) District Health Authorities (DHAs), Nova Scotia:
- DHA 1 – South Shore Health
 - DHA 2 – South West Health
 - DHA 3 – Annapolis Valley Health
 - DHA 4 – Colchester East Hants Health Authority
 - DHA 5 – Cumberland Health Authority
 - DHA 6 – Pictou County Health Authority
 - DHA 7 – Guysborough Antigonish Strait Health Authority
 - DHA 8 – Cape Breton District Health Authority
 - DHA 9 – Capital Health