

6. Indoor public spaces

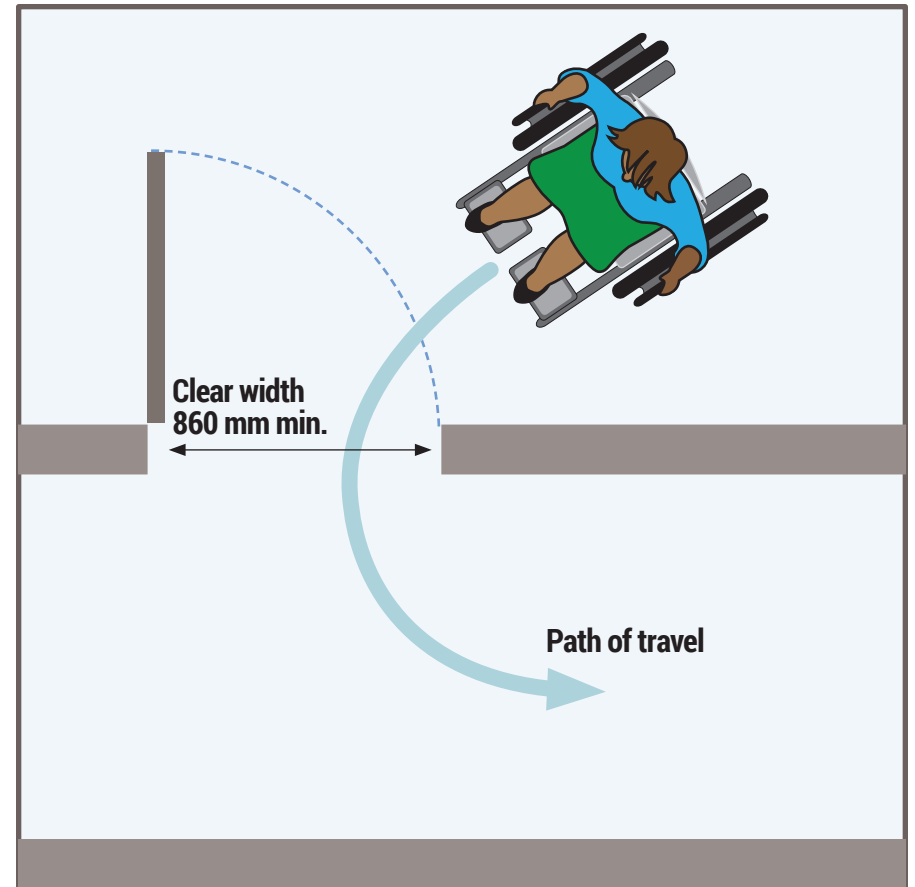
6.2 Interior doors and doorways

Location:

Date and time:

Auditor:

Description:



A door providing at least 860 mm (32 in.) when the door is 90 degrees open (6.2.a.ii)


	Source	Yes (+ 3)	Most of the time (+ 2)	Some -times (+ 1)	No (0)	N/A (- 3)*	Comments
6.2.a ALL DOORS							
6.2.a.i	Is there space for manoeuvring on both sides of the entrance, with a landing area of at least 1670 mm x 1670 mm (66 in. x 66 in.)?	CSA B651-18 (5.2.2)					
6.2.a.ii	Is the width of the door at least 850 mm (33.5 in.) measured when the door is 90 degrees open?	CSA B651-18 (5.2.1)					
6.2.a.iii	Is the door marked with the International Symbol of Accessibility?  (Source: International Symbol of Access included in ISO 7001)	CSA B651-18 (5.2.9.3)					
6.2.b MANUAL DOORS							
6.2.b.i	Is the door easy to open with minimal force?	CSA B651-18 (5.2.8)					

chart continued on next page →

	Source	Yes (+ 3)	Most of the time (+ 2)	Some -times (+ 1)	No (0)	N/A (- 3)*	Comments
6.2.b.ii Is the handle or hardware accessible? For one-hand operation? Without grasping, pinching, or twisting? For people with mobility impairments, large “D” handles are easy to use.	CSA B651-18 (4.2.4)						
6.2.c AUTOMATIC OR POWER-OPERATED DOORS							
6.2.c.i Is the placement of a manually activated door button within 900–1100 mm (35–43 in.) of the ground?	CSA B651-18 (4.2.3)						
6.2.c.ii Are door controls colour contrasted with their background?	CSA B651-18 (4.2.6)						
6.2.c.iii Are automatic door sensors suitably placed to detect users approaching?	CSA B651-18 (5.2.9)						
						<i>chart continued on next page →</i>	

	Source	Yes (+ 3)	Most of the time (+ 2)	Some -times (+ 1)	No (0)	N/A (- 3)*	Comments
6.2.c.iv Do doors remain open long enough for safe and comfortable passage? Automatic doors should take at least three seconds to fully open from a closed position and should remain open for at least five seconds to allow safe entry and exit.	CSA B651-18 (5.2.9.1)						
6.2.d For doors opening outward into corridors or pedestrian traffic, is the door swing path marked to show how far out the door will open?	RHFAC (2.4.11)						
						Subtotal	Max. score
						+ 30	=
		Subtotal	Subtotal	Subtotal	Subtotal	Final Total	
		+	+	+	=		

Principle 1

Does this feature follow the whole journey approach?

Principle 2

Does this feature follow the concepts of universal design?

Principle 3

Is there an adequate seasonal maintenance program for this feature?
