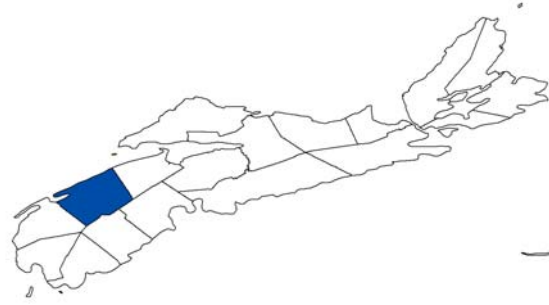


# ANNAPOLIS COUNTY



## PROFILE of AGRICULTURAL LAND RESOURCES

### Overview of county land resources

Land most suitable for agricultural production (Canadian Land Inventory (CLI) classes 2,3 and 4<sup>i</sup>) covers approximately 15 percent of Annapolis County (see Table 1). Annapolis has 0.4 percent of the province's CLI 2 soils, 3 percent of CLI 3 and 4 percent of CLI 4.

Annapolis has approximately 17,000 hectares in agricultural production. This amounts to approximately 7 percent of Nova Scotia land in agriculture. Farming in Annapolis uses about 5 percent of the county land area.

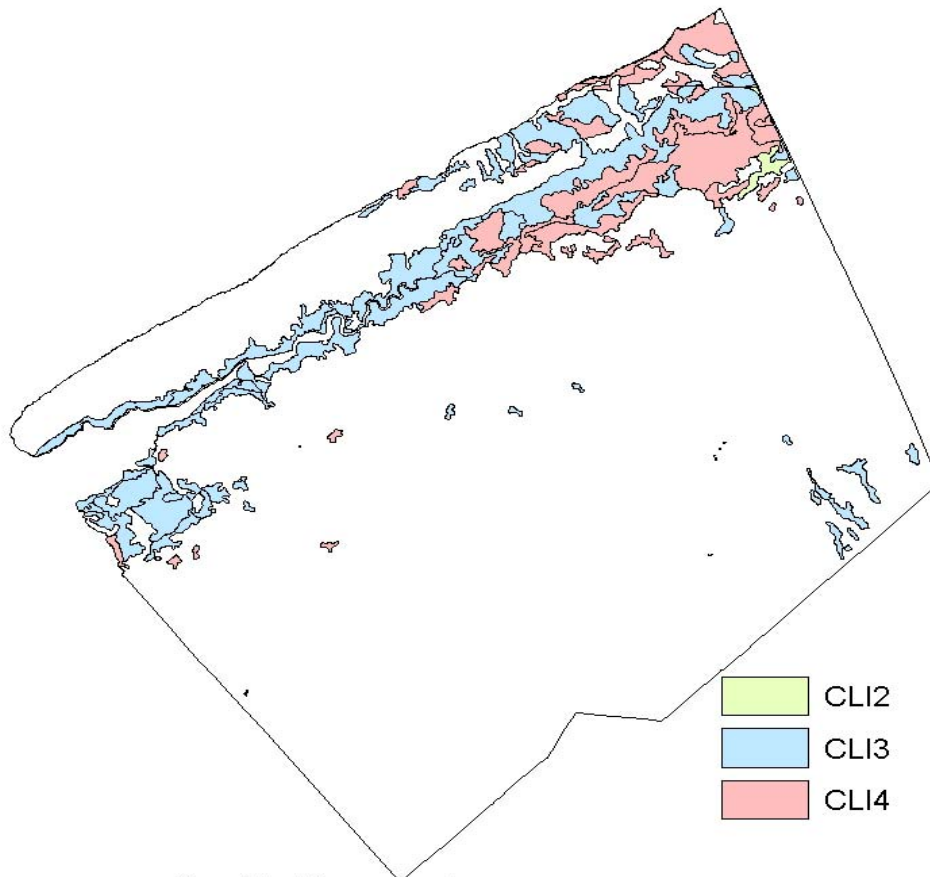
**Table 1. Agricultural land statistics- Annapolis County**

|                           | Hectares | Percent of provincial total | Percent of county land area |
|---------------------------|----------|-----------------------------|-----------------------------|
| CLI 2,3,4 TOTAL           | 47,082   | 3.0                         | 14.8                        |
| CLI 2                     | 629      | 0.4                         | 0.2                         |
| CLI 3                     | 28,560   | 2.9                         | 9.0                         |
| CLI 4                     | 17,893   | 4.3                         | 5.6                         |
| Agricultural land (ALIP)* | 16,134   | 6.8                         | 5.1                         |
| Agricultural land (DNR)** | 16,978   | 7.4                         | 5.4                         |
| Blueberry land (DNR)**    | 61       | 0.4                         | 0.02                        |

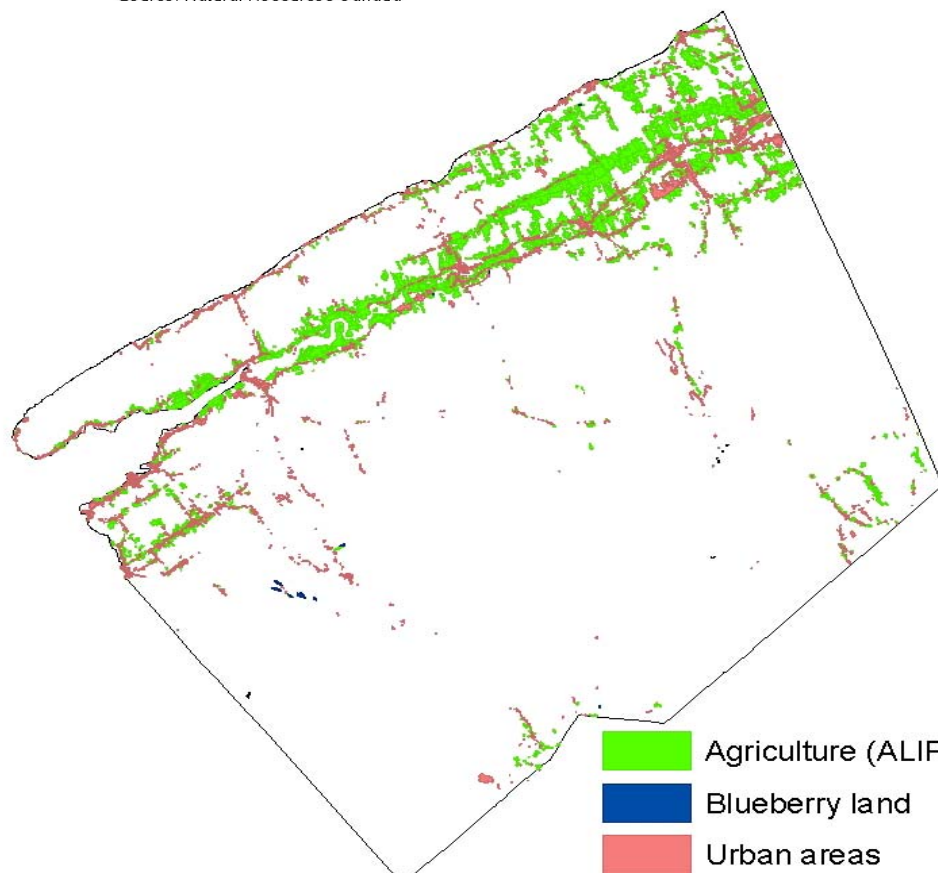
\* As indicated by the NSDA Agricultural Land Identification Project.  
 \*\* Based on forest coverage files from NS Natural Resources (blueberry land is low-bush/ wild)  
 Source: Nova Scotia Department of Agriculture, Natural Resources Canada, Nova Scotia Department of Natural Resources.

Annapolis also has 61 hectares of wild blueberry production. This amounts to 0.4 percent of the Nova Scotia total.

**Figure 1a. Agricultural lands in Annapolis County**

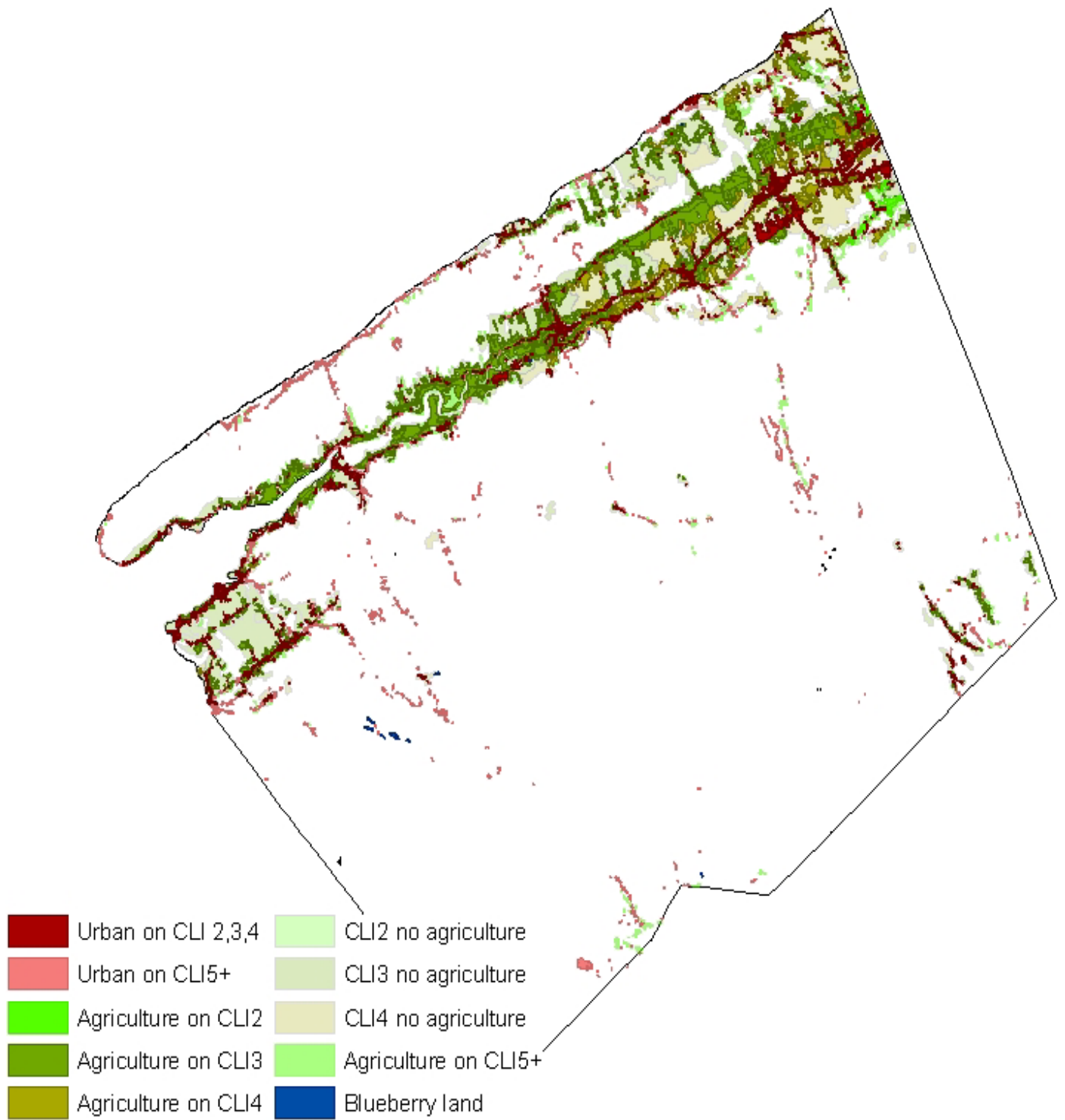


Source: Natural Resources Canada



Sources: NS Agriculture, NS Natural Resources, Natural Resources Canada

**Figure 1b. Agricultural lands in Annapolis County (overlay)**

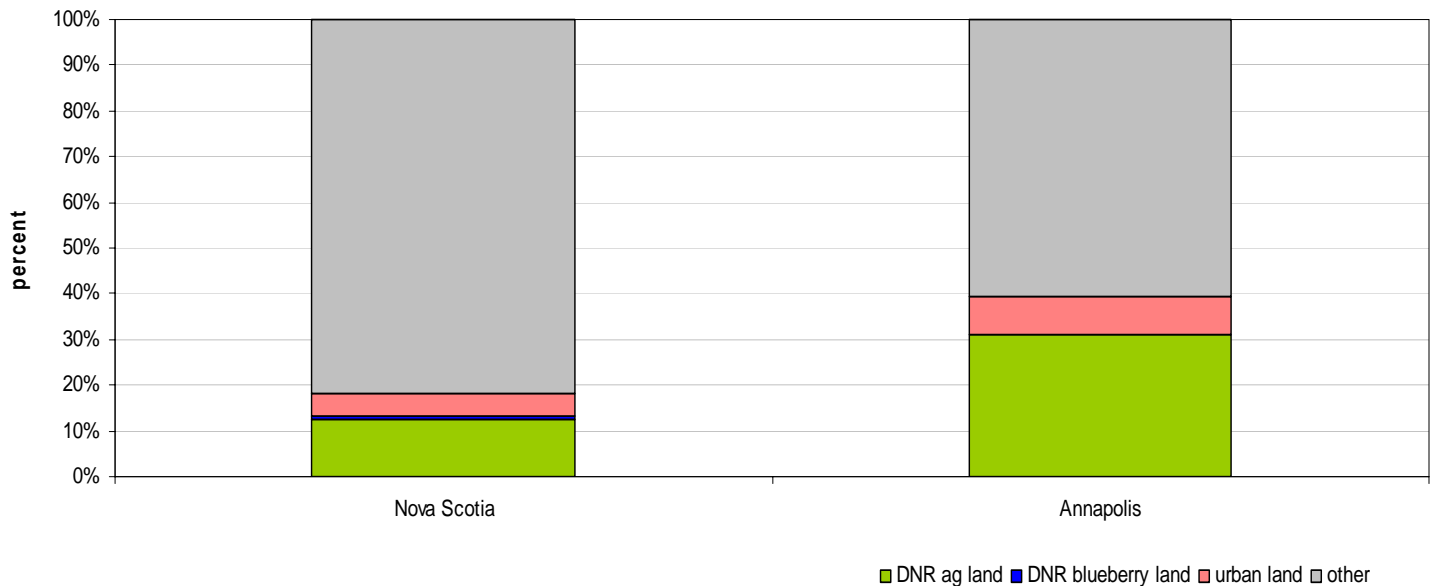


Sources: NS Agriculture, NS Natural Resources, Natural Resources Canada

## Usage of arable land and composition of farmed land

Land most suitable for agricultural production (CLI classes 2, 3 and 4) are used for agriculture in Annapolis County at a significantly higher rate than the provincial average (see Figure 2 and Table 2). About 31 percent of suitable agricultural land is used for agricultural production in Annapolis compared with 13 percent provincially. This places Annapolis 2<sup>nd</sup> behind only Kings among the 18 counties in terms of utilization of arable land for farming.

**Figure 2. Utilization of soils suitable for agriculture- Annapolis vs Nova Scotia**



Premium agricultural land (CLI 2) is relatively highly utilized for farming in Annapolis with approximately 41 percent in agriculture (2<sup>nd</sup> out of 18 counties). This is higher than the Nova Scotia average of 29 percent of CLI 2 lands used for agriculture.

Annapolis has about 8 percent of its good agricultural soils under urban development (the 5<sup>th</sup> highest in Nova Scotia). This is higher than the provincial average of 5.4 percent.

**Table 2. Use of agricultural soils (CLI classes 2,3,4) in Annapolis County and Nova Scotia**

|                          | CLI 2     |             | CLI 3     |             | CLI 4     |             | TOTAL CLI 2,3,4 |             |
|--------------------------|-----------|-------------|-----------|-------------|-----------|-------------|-----------------|-------------|
|                          | Annapolis | Nova Scotia | Annapolis | Nova Scotia | Annapolis | Nova Scotia | Annapolis       | Nova Scotia |
|                          | Percent   |             |           |             |           |             |                 |             |
| Agricultural land (DNR)* | 40.8      | 29.3        | 35.5      | 12.0        | 23.8      | 7.9         | 31.1            | 12.7        |
| Blueberry land (DNR)*    | 0.0       | 0.5         | 0.0       | 0.3         | 0.0       | 1.8         | 0.0             | 0.7         |
| Urban area               | 7.2       | 6.9         | 7.3       | 5.4         | 9.5       | 4.6         | 8.1             | 5.4         |
| Other                    | 52.0      | 63.3        | 57.2      | 82.3        | 66.7      | 85.7        | 60.8            | 81.2        |

\* Based on forest coverage files from NS Natural Resources (blueberry land is low-bush/ wild)  
 Source: Nova Scotia Department of Agriculture.  
 Natural Resources Canada.  
 Nova Scotia Department of Natural Resources.

Looking at the land base from a slightly different perspective (the composition of lands used for agriculture, Table 3) it is apparent that Annapolis County agriculture is generally taking place on good agricultural soils, at a rate similar to the provincial average, but with less farming taking place on class 2 land due to the relatively small area of this land in the county. Approximately 60 percent of Annapolis agriculture is on class 3 land with a further 25 percent on class 4. Approximately 14 percent of Annapolis agriculture is on poorer than class 4 soils.

**Table 3. Composition of lands in agriculture- Annapolis County**

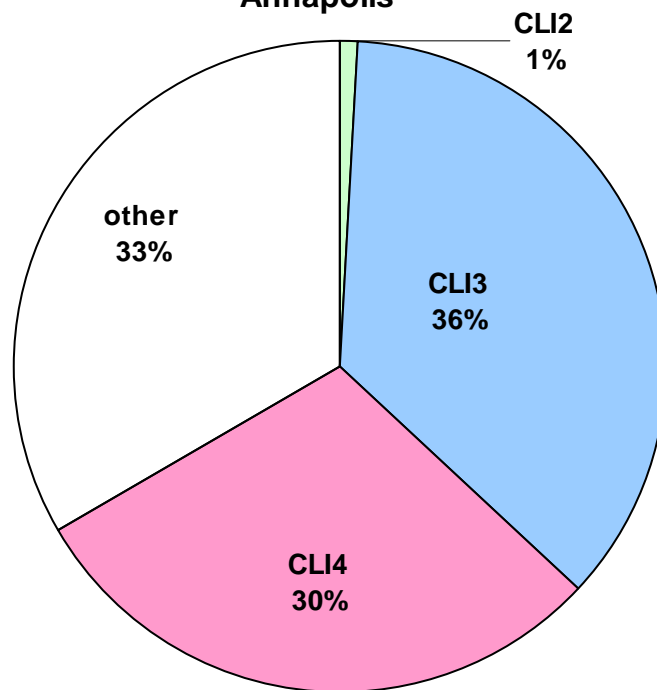
|       | Agricultural land (ALIP)* |             | Agricultural land (DNR)** |             | Blueberry land (DNR)** |             |
|-------|---------------------------|-------------|---------------------------|-------------|------------------------|-------------|
|       | Annapolis                 | Nova Scotia | Annapolis                 | Nova Scotia | Annapolis              | Nova Scotia |
|       | Percent                   |             |                           |             |                        |             |
| CLI 2 | 1.7                       | 20.5        | 1.5                       | 21.1        | 0.0                    | 4.7         |
| CLI 3 | 59.3                      | 49.4        | 59.7                      | 51.8        | 3.8                    | 16.4        |
| CLI 4 | 25.2                      | 16.3        | 25.1                      | 14.5        | 6.4                    | 44.5        |
| Other | 13.9                      | 13.8        | 13.7                      | 12.7        | 89.9                   | 34.4        |

\* As indicated by the NSDA Agricultural Land Identification Project.  
 \*\* Based on forest coverage files from NS Natural Resources (blueberry land is low-bush/ wild)  
 Source: Nova Scotia Department of Agriculture, Natural Resources Canada,  
 Nova Scotia Department of Natural Resources.

## Urban use and property fragmentation of the agricultural land base

As shown in Figure 3, about two-thirds of urban development in Annapolis is on land with good capability for agriculture. Only 1 percent of urban development occurs on class 2 soil, while 36 percent is on class 3 and 30 percent on class 4 land. The main areas of urban development on arable land include the land around South Farmington/Middleton/Nictaux, as well as Bridgetown, Cornwallis and the Bear River area. The one-third of urban development on land rated CLI5 or poorer ranks Annapolis 9<sup>th</sup> out of 18 counties in terms of intensity of use of arable land for urban development.

**Figure 3. Composition of urban land-  
Annapolis**



Some lands currently in agriculture may be relatively easily removed for other forms of development. A contributing factor is lot size. Annapolis County has 1,676 properties that are less than two hectares in size that are centered in ALIP lands (Table 4). These properties amount to 1,224 hectares, 1,033 of which are on ALIP.

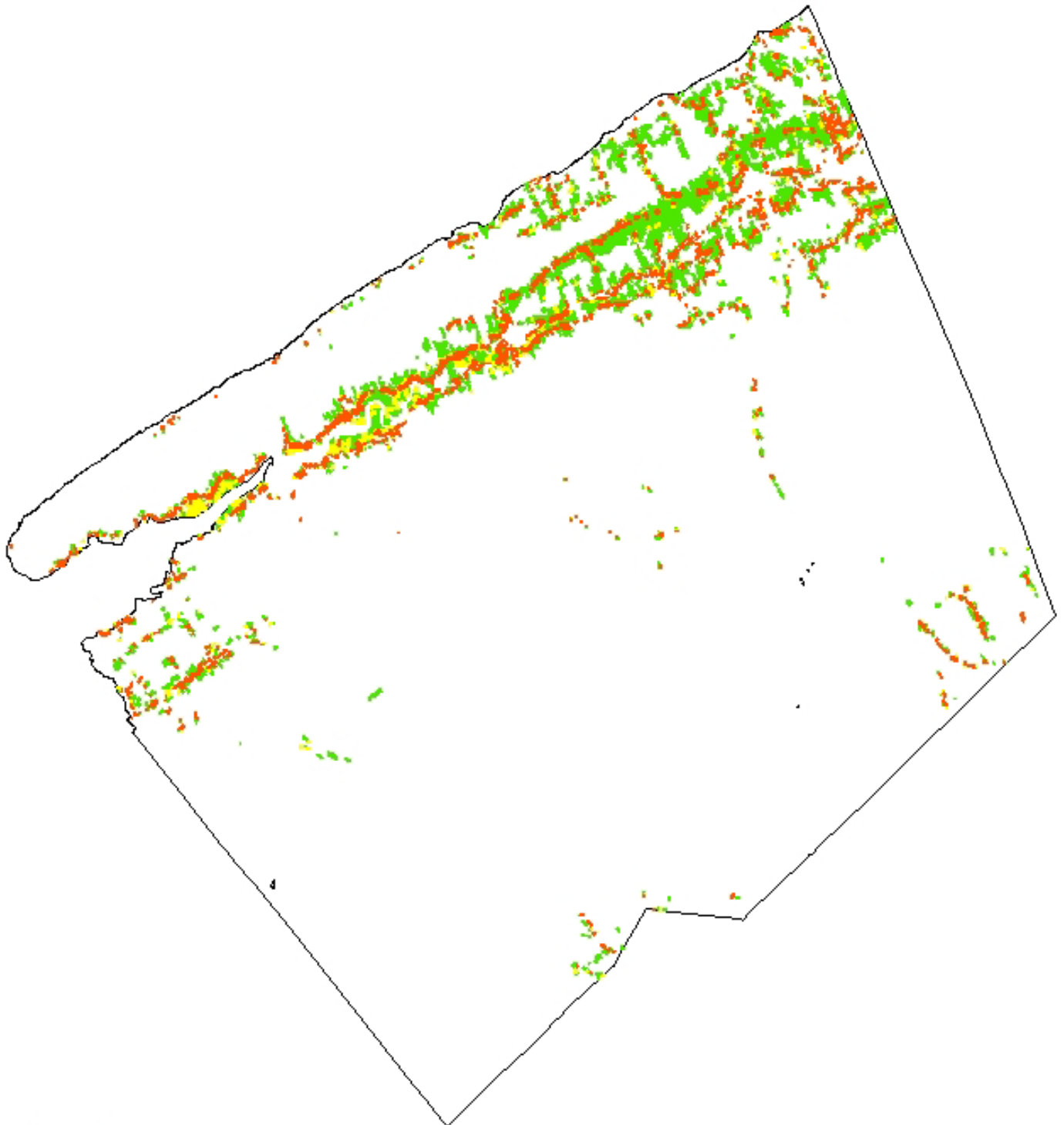
| <b>Table 4. Analysis of small properties (&lt; 2ha) encroaching on farm land- Annapolis County, Nova Scotia</b> |                          |          |                                      |          |  |              |
|---|--------------------------|----------|--------------------------------------|----------|--|--------------|
|   | <b>Vacant properties</b> |          | <b>Properties with civic address</b> |          | <b>TOTAL of small properties (&lt; 2 ha)</b> |              |
|   | # properties             | Hectares | # properties                         | Hectares | # properties                                 | Hectares     |
| <b>Centered in ALIP farmland</b>  | 792                      | 581      | 884                                  | 643      | <b>1,676</b>                                 | <b>1,224</b> |
| <b>Area in farmland of properties centered in ALIP</b>  | 792                      | 510      | 884                                  | 523      | <b>1,676</b>                                 | <b>1,033</b> |
| <b>Within 10 meters of ALIP farmland</b>  | 1,374                    | 952      | 1,867                                | 1,257    | <b>3,241</b>                                 | <b>2,209</b> |
| Source: Provincial PID data, NSDA (ALIP data)   |                          |          |                                      |          |  |              |

A total of 3,241 properties less than two hectares in size are on or adjacent to ALIP lands, 58 percent of which have civic addresses (i.e. are not vacant). This amounts to 14 percent of the provincial total of these properties. Relative to the amount of farming in Annapolis, the county has the 9<sup>th</sup> highest rate of small developed properties that are adjacent to farmland.

Ultimately, approximately 265 hectares (1.6 percent) of ALIP lands in Annapolis have been lost to urban development since 1998. This places Annapolis 8<sup>th</sup> in terms of percentage farmland lost to development and 5<sup>th</sup> in terms of area of farmland lost.

While physical occupancy of land by non-farm development or land with the potential for non-farm development can be used to estimate potential loss of land to the sector, the effect of development on adjacent agricultural lands is probably of greater significance in terms of area affected. In order to estimate the area of farmland that is at risk due to the proximity of development, a 300 ft (91.44m) buffer was drawn around each small (<2ha) property and the amount of ALIP farmland falling under this zone was calculated (Figure 4). Annapolis has approximately 32 percent of its ALIP farmland falling under this category, the 7<sup>th</sup> highest in the province (5<sup>th</sup> highest in absolute terms). Approximately 22 percent of Annapolis farmland is within 300 feet of a small property with a civic address (i.e. likely developed property).

**Figure 4. Agriculture (ALIP) within 300 feet of small properties (< 2ha)**



- Agriculture (ALIP) within 300ft of small properties with civic address
- Agriculture (ALIP) within 300ft of other small properties
- Other agriculture (ALIP)

Sources: NS Agriculture, SNSMR

---

<sup>i</sup> Nova Scotia does not have any CLI class 1 soil. Class 2 to 4 soils have moderate to severe limitations that restrict the range of crops or require special conservation practices or both. Class 5 soils and below have very severe limitations for agriculture.

## Sources

Natural Resources Canada. Canada Land Inventory. Available from: <http://geogratis.cgdi.gc.ca/CLI/frames.html>. Accessed [25 January 2010].

Nova Scotia Department of Agriculture. Agricultural Land Identification Project (ALIP).

Nova Scotia Department of Natural Resources. Forest Inventory - Geographic Information Systems. Available from: [www.gov.ns.ca/natr/forestry/gis/forest-inventory.asp](http://www.gov.ns.ca/natr/forestry/gis/forest-inventory.asp). Accessed [25 January 2010].

SNSMR (Service Nova Scotia and Municipal Relations). 2009. NS Civic Address File and property polygons.