

Nova Scotia Monthly COVID-19 Epidemiologic Summary: 12JUL2022

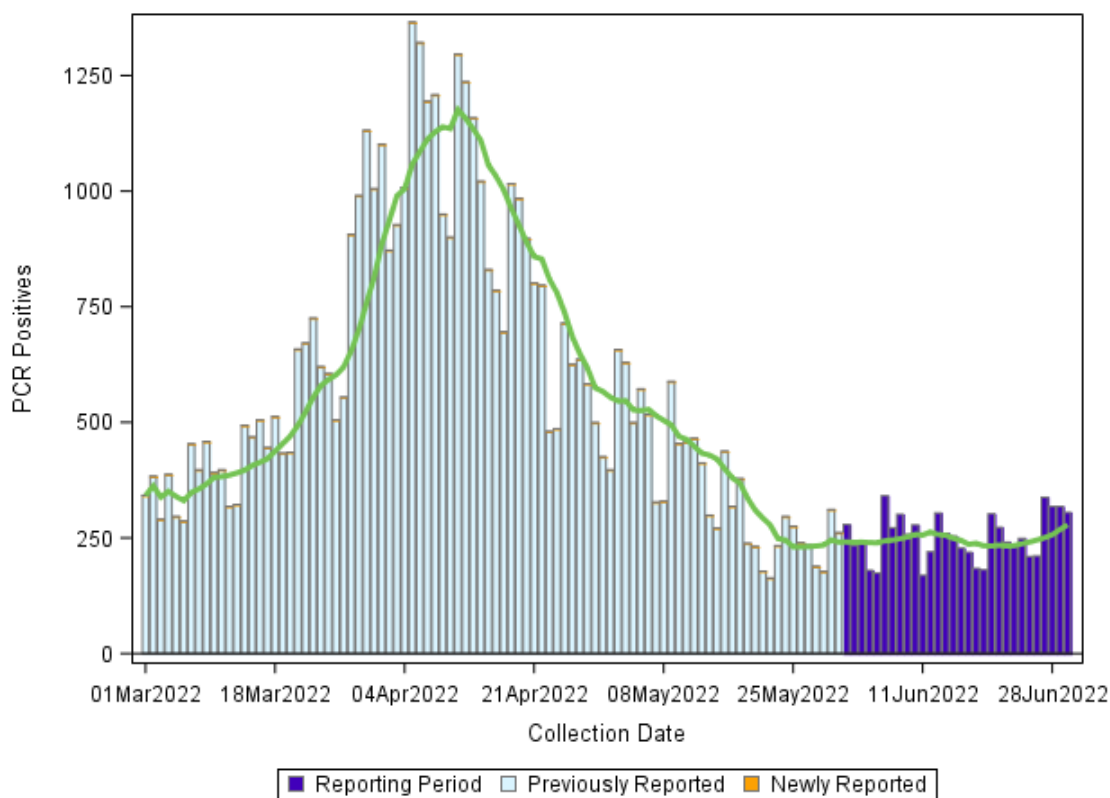
Public Health Branch
Nova Scotia Department of Health and Wellness

Highlights:

- A total of 7,570 PCR positive results, 144 hospitalizations and 15 deaths from COVID-19 were observed during the month of June 2022.
- The number of PCR positive results, hospitalizations, and deaths has decreased in June compared to the previous month, including for those in long-term care facilities.
- Of the 15 deaths that occurred in June, 13 (87%) were in people aged 70 years and older and seven (47%) were residing in a long-term care facility.
- Age and lack of vaccination continue to be associated with severe outcomes:
 - Nova Scotians aged 70+ have been hospitalized at nearly 13 times the rate of those 18-49 years of age and the rate of death is 161 higher compared to those under 50 years of age.
 - Unvaccinated Nova Scotians were hospitalized at nearly four times the rate and died more than three times the rate as those with three or more doses.
- To more accurately estimate vaccine coverage in Nova Scotia, the province is switching from using Statistics Canada population estimates to the number of Nova Scotians eligible for MSI (the province's health insurance card) as the denominator for estimating both per capita rates and vaccine coverage.

COVID-19 Cases

Figure 1: Number and seven-day moving average of PCR positive results by collection date, March 1 to June 30, 2022 (N=61,790)

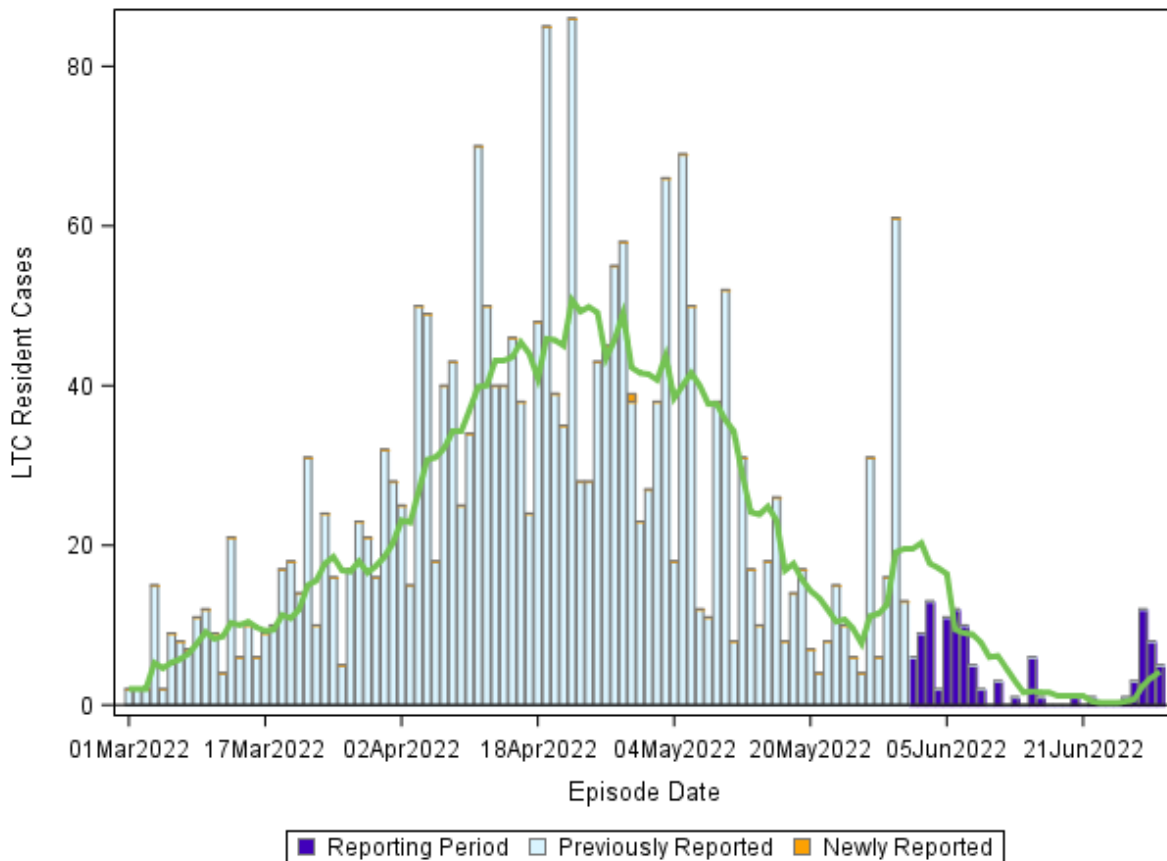


Data source: Provincial Public Health Lab Network

Notes:

- PCR refers to polymerase chain reaction tests performed in a lab
- Only the first positive result for the same individual within a 90-day period are counted; subsequent positive results will constitute a new infection (i.e., a re-infection).
- Access to PCR tests are restricted to eligible populations as outlined in the following link: <https://www.nshealth.ca/coronavirustesting>.

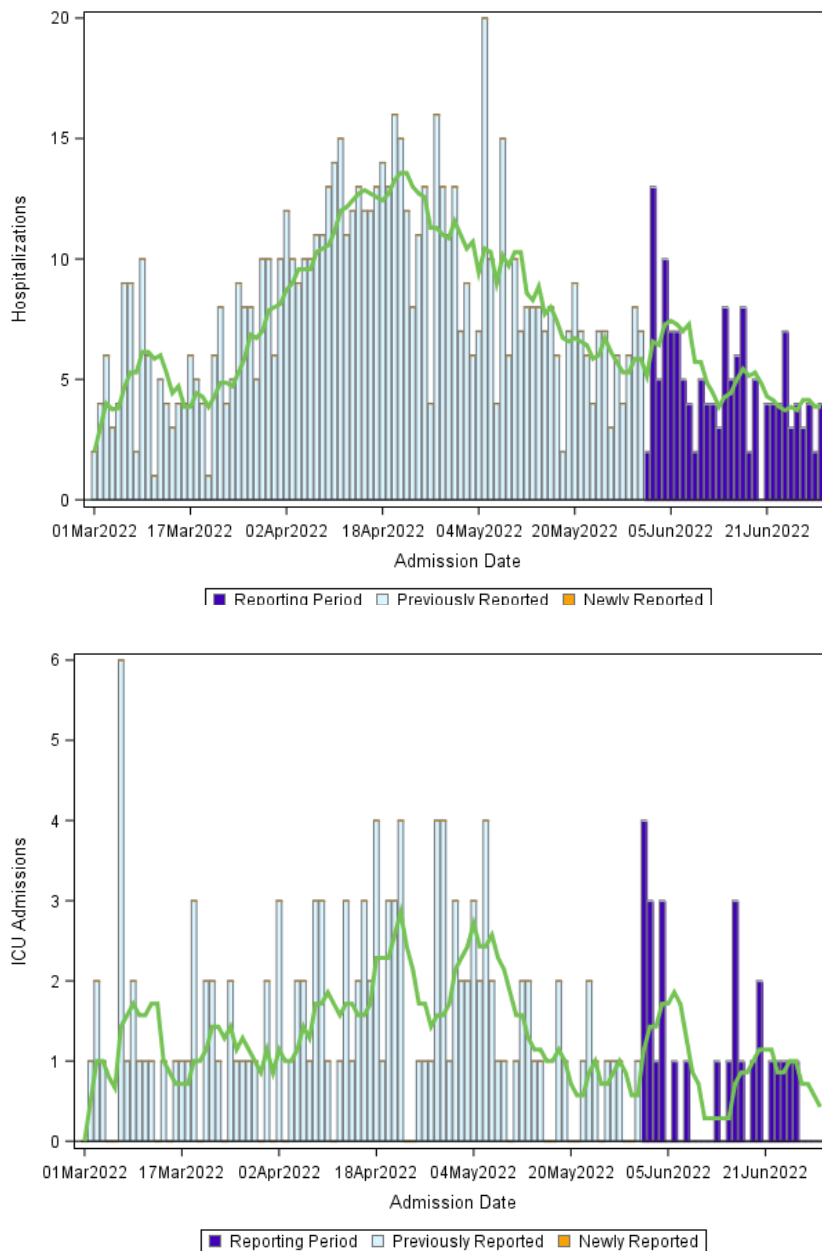
Figure 2: Number and seven-day moving average of COVID-19 cases among long-term care residents by episode date, March 1 to June 30, 2022 (N=2459)



Data source: Panorama

COVID-19 Serious Outcomes

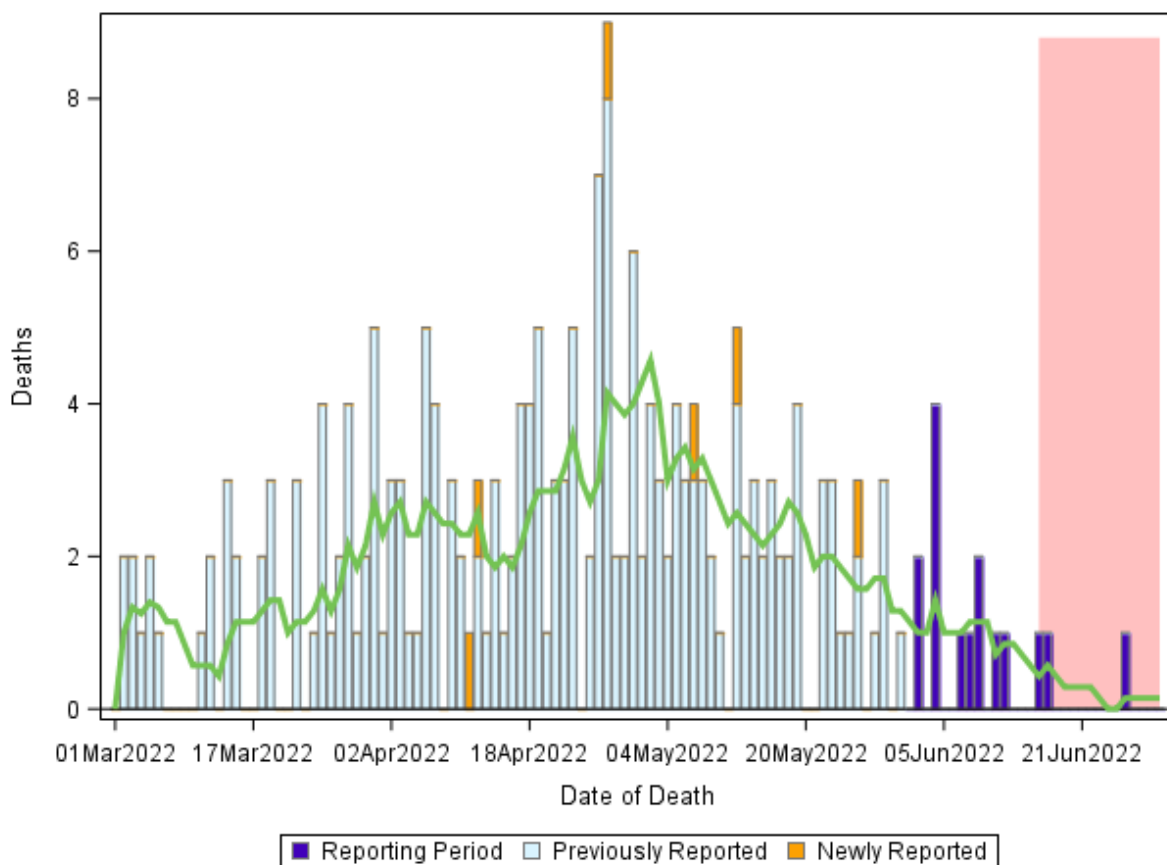
Figure 3: Daily COVID-19 hospital and ICU admissions by admission date, March 1 to June 30, 2022 (N=901)



Data source: PPHLN, Meditech and STAR

Novel Coronavirus (COVID-19)

Figure 4: Number and seven-day moving average of COVID-19 deaths by date of death, March 1 to June 30, 2022 (N=198)



Data source: Panorama

Notes:

- Deaths are subject to a lag in reporting. The previous 14 days (red area) should be interpreted with caution.

Table 1: PCR positive results, hospitalizations and deaths

	Number in reporting month	Number in previous month	Change from last month	March 1, 2022- June 30, 2022 totals	Age range (years)	Median age (years)	Median LoS (days)
PCR Positives	7570	11030	-3460	61790	0 - 110	44	n/a
Hospitalizations	144	229	-85	901	0 - 103	72	6.4
Deaths	15*	67	-52	198	42 - 104	83	n/a

Data sources: PCR positive results – Provincial Public Health Lab Network; Hospitalizations – PPHLN, Meditech, STAR; Deaths – Panorama

Notes:

- PCR refers to polymerase chain reaction tests performed in a lab
- LoS means length of stay

* Deaths are subject to a lag in reporting. The number of deaths reported in the current month should be interpreted with caution.

Table 2: Hospitalization* and death rates by age group, March 1, 2022 to June 30, 2022 (Wave 6)

	Number	Age-specific rate per 100K	Relative Risk
Hospitalizations			
<18 years	35	21.5	0.8
18-49 years**	102	26.7	1.0
50-69 years	237	81.2	3.0
70+ years	527	344.0	12.9
Deaths			
<50 years**	4	0.7	1.0
50-69 years	21	7.2	10.3
70+ years	173	112.9	161.3

Data sources: Hospitalizations - PPHLN, Meditech and STAR; Deaths – Panorama; Denominator - MSI Eligible Nova Scotians

Notes:

- * Hospitalizations for individuals missing age are excluded from the analysis (counts, crude rates, age-adjusted rates, risk reduction)
- ** = Denotes reference category. All risks are presented in comparison to the reference category. Comparisons are made by dividing the age-specific rates in the age category of interest to the age-specific rates in the reference category
- To more accurately estimate vaccine coverage in Nova Scotia, the province is switching from using Statistics Canada population estimates to the number of Nova Scotians eligible for MSI (the province's health insurance card) as the denominator for estimating both per capita rates and vaccine coverage.

Table 3: Age-adjusted hospitalization* and death rates by vaccine status, March 1, 2022 to June 30, 2022 (Wave 6)

Vaccination Status	Number	Crude Rate per 100k Person-Years	Age-Adjusted Rate per 100k Person-Years
Hospitalizations			
Unvaccinated	184	377.8	787.9
2 Doses	205	203.5	413.2
3+ Doses	512	302.6	201.2
Deaths			
Unvaccinated	27	55.4	158.7
2 Doses	38	37.7	111.2
3+ Doses	131	77.4	48.3

Data sources: Hospitalizations - PPHLN, Meditech and STAR; Deaths – Panorama; Denominator - MSI Eligible Nova Scotians

Notes:

- * Hospitalizations for individuals missing age are excluded from the analysis (counts, crude rates, age-adjusted rates, risk reduction)
- A person is considered unvaccinated when they have zero doses of any COVID-19 vaccine
- A person is considered to have two doses 14 or more days after the second dose of any vaccine OR 14 or more days after one dose of Johnson & Johnson vaccine OR are within 14 days of receiving a third dose of any COVID-19 vaccine
- A person is considered to have three or more doses 14 or more days after a third dose of any COVID-19 vaccine
- Due to small number of events occurring among those just one dose, that group is not included in this analysis.
- To more accurately estimate vaccine coverage in Nova Scotia, the province is switching from using Statistics Canada population estimates to the number of Nova Scotians eligible for MSI (the province's health insurance card) as the denominator for estimating both per capita rates and vaccine coverage.

Table 4: Summary of confirmed and probable COVID-19 cases and outcomes, March 1, 2022 to 30 June 2022 (Wave 6)

	Province-Wide
Number of cases	61,790
Hospitalized (%)	1.5%
ICU (%)	0.3%
Deceased (%)	0.3%

Data sources: PCR positives PPHLN; Hospitalizations Meditech and STAR ; Deaths Panorama

Data Sources and Notes:

Panorama

- Data are valid to the day of the report at 04:00
- Data presented in this report contain the information available at the time of data extraction. It may be incomplete pending follow-up. As more information becomes available, it will be included in subsequent reports.

Provincial Public Health Laboratory Network

- Data are valid to the day of the report at 05:30.
- Data presented in this report contain the information available at the time of data extraction. It may be incomplete pending follow-up. As more information becomes available, it will be included in subsequent reports

Meditech and STAR (Nova Scotia Health)

- Data are valid to the day of the report at 04:00
- Data are based on positive lab results and reflect patients with a valid health card number at the time of testing or admission
- Data presented in this report contain the information available at the time of data extraction. It may be incomplete pending follow-up. As more information becomes available, it will be included in subsequent reports
- Includes patients that are assumed to be admitted for COVID-related treatment based on inpatient location

MSI (Provincial Health Insurance)

- To more accurately estimate vaccine coverage in Nova Scotia, the province is switching from using Statistics Canada population estimates to the number of Nova Scotians eligible for MSI (the province's health insurance card) as the denominator for estimating both per capita rates and vaccine coverage.
- Data are valid to the day of the report at 05:00
- Provincial denominator estimates are updated approximately every six months

COVID-19 Case Definitions

<https://www.canada.ca/en/public-health/services/diseases/2019-novel-coronavirus-infection/health-professionals/national-case-definition.html>