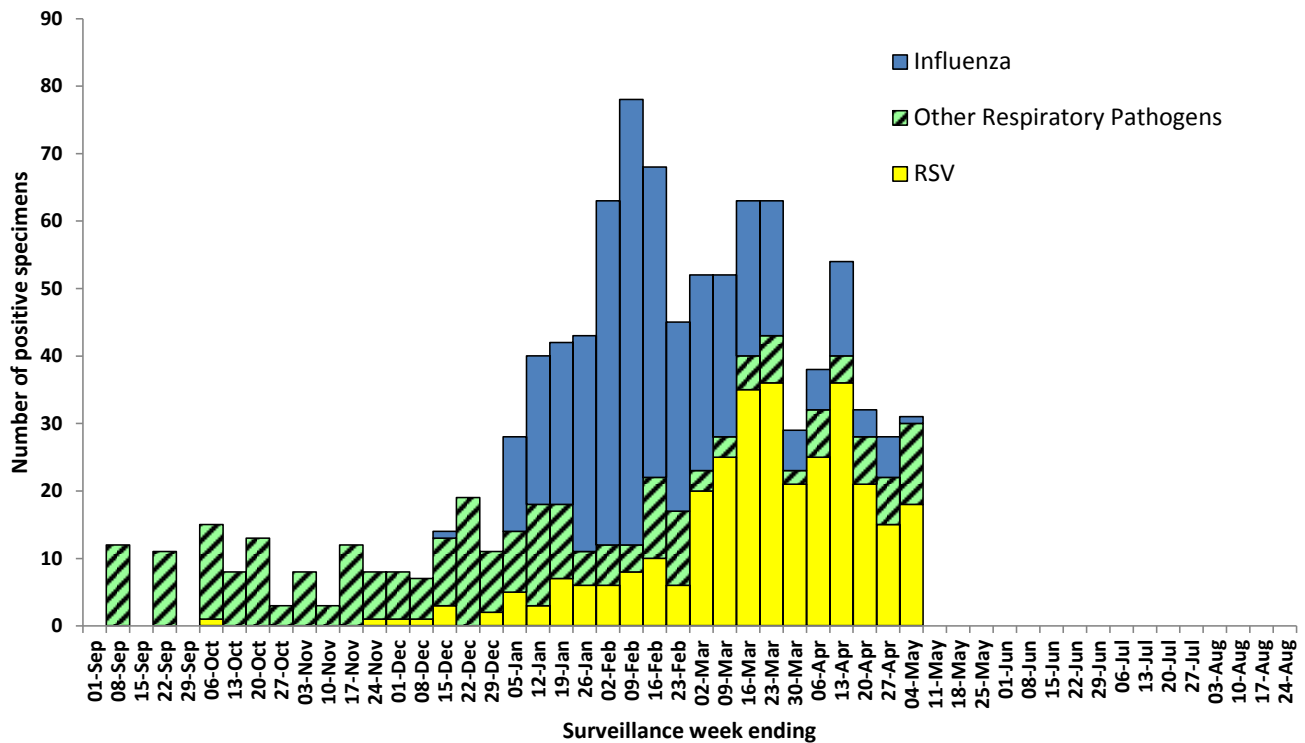


Summary of Nova Scotia surveillance findings, for the period ending May 4, 2013:

- One influenza positive lab result was reported this week.
- Other respiratory pathogen activity continues. Positive results were received for metapneumovirus, mycoplasma pneumoniae, parainfluenza, rhinovirus and RSV.
- The ILI rate for Nova Scotia for this reporting period was 1.0. Eighty five percent of ER sites reported ILI data this week.
- One specimen was submitted through the sentinel swabbing program.
- Sentinel physician data was received from 6 (of 30) physicians.

Figure 1: Summary of laboratory detected circulating respiratory pathogens, Nova Scotia, 2012–2013



RESPIRATORY WATCH

Week 18 (April 28 to May 4, 2013)

Figure 3: Number of reported lab-confirmed influenza cases by type and report week, Nova Scotia, 2012–2013

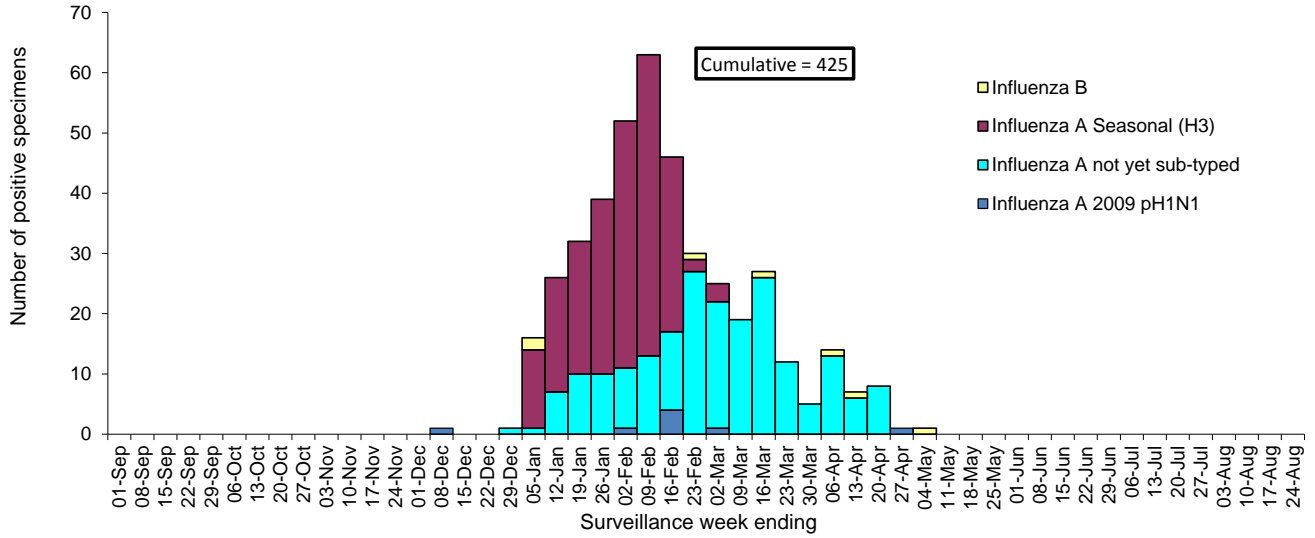
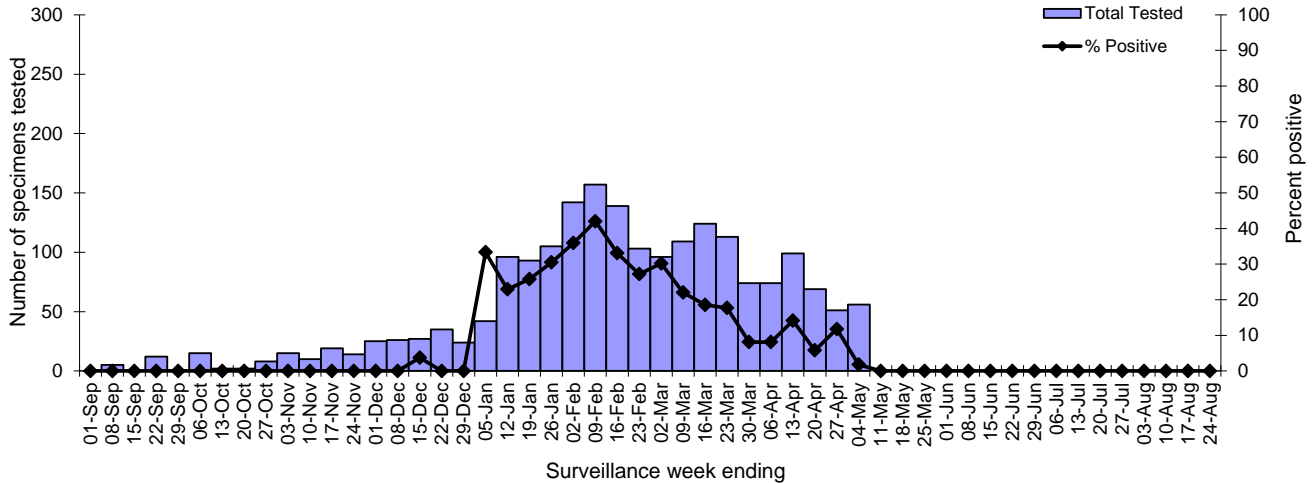


Figure 4: Number of specimens tested for influenza and percent positive, Nova Scotia Provincial Public Health Laboratory Network, 2012–2013*



*Data presented in this figure refers to week specimen was tested.

RESPIRATORY WATCH

Week 18 (April 28 to May 4, 2013)

Table 1: Influenza case counts by DHA, current surveillance week and cumulative, Nova Scotia, 2012–2013

	DHA 1	DHA 2	DHA 3	DHA 4	DHA 5	DHA 6	DHA 7	DHA 8	DHA 9	Nova Scotia
Influenza A 2009 pH1N1										
Current Week	0	0	0	0	0	0	0	0		0
Cumulative 2012 - 2013	1	0	0	0	0	0	0	0	7	8
Influenza A (not yet sub-typed)										
Current Week	5	0	0	0	0	0	0	0	3	8
Cumulative 2012 - 2013	34	1	6	6	9	9	6	28	103	202
Influenza A Seasonal (H3)										
Current Week	0	0	0	0	0	0	0	0	0	0
Cumulative 2012 - 2013	15	4	5	4	4	21	9	32	114	208
Influenza B										
Current Week	0	1	0	0	0	0	0	0	0	1
Cumulative 2012 - 2013	0	1	0	0	0	1	1	2	2	7

Figure 5: Influenza rate per 100,000 population by type and age group, cumulative, Nova Scotia, 2012–2013

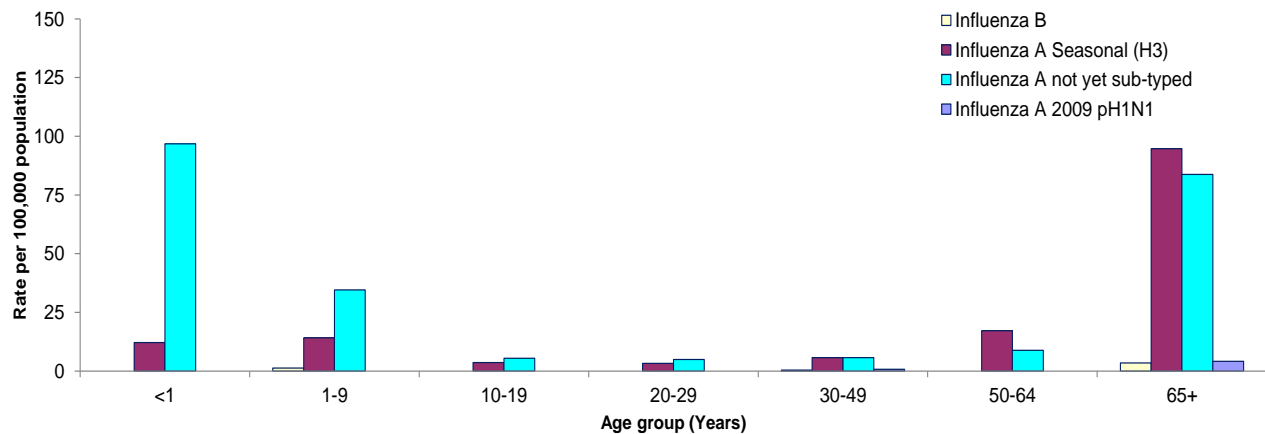
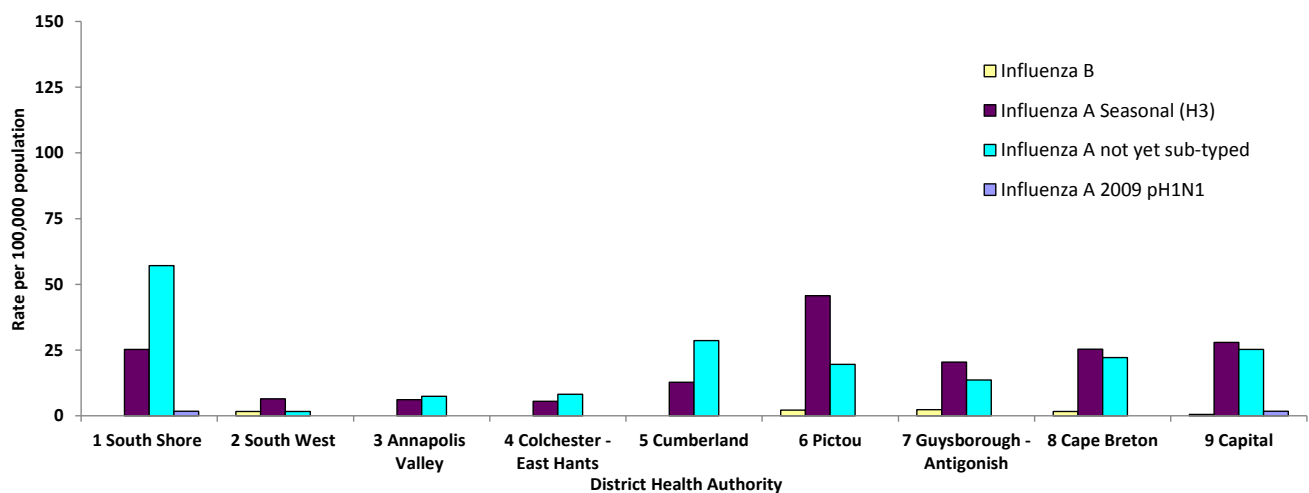


Figure 6: Influenza rate per 100,000 population by type and DHA, cumulative, Nova Scotia, 2012–2013



RESPIRATORY WATCH

Week 18 (April 28 to May 4, 2013)

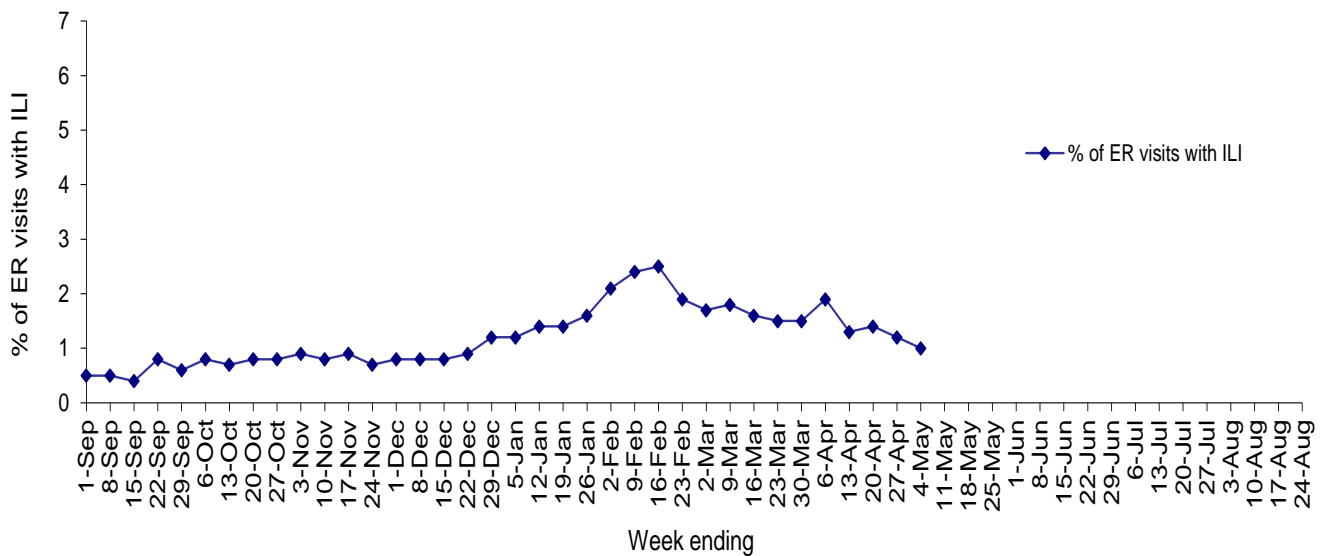
Table 2: ILI reporting from emergency departments and FluWatch sentinel physicians, and Sentinel Swabbing Specimen Submissions, Nova Scotia, 2012-2013

	ER SURVEILLANCE			SENTINEL SURVEILLANCE*		SENTINEL SWABBING	
	%ILI	Reporting ERs		%ILI	Reporting Sentinels	# Swabs	Sites Submitting Specimens
DHA 1	1.5	3	of 3	0.0	2 of 6	0	0 of 1
DHA 2	0.0	3	of 3	-	0 of 0	0	0 of 1
DHA 3	0.2	3	of 5	-	0 of 1	0	0 of 2
DHA 4	1.2	2	of 2	-	0 of 0	0	0 of 2
DHA 5	0.4	5	of 5	-	0 of 2	0	0 of 1
DHA 6	1.0	1	of 1	-	0 of 2	1	1 of 1
DHA 7	1.2	6	of 6	-	0 of 1	0	0 of 2
DHA 8	1.9	6	of 8	0.0	1 of 4	0	0 of 3
DHA 9	0.4	5	of 7	5.5	3 of 14		
IWK	4.4	1	of 1				
Nova Scotia (excl. IWK)†	0.8	34 of 40	85.0%			1	1 of 12
Nova Scotia (incl. IWK)	1.0	35 of 41	85.4%	3.1%	6 of 30		

*Flu watch sentinels

†Excludes the children's ER from IWK

Figure 7: Percentage of ER visits with ILI, Nova Scotia, 2012–2013



RESPIRATORY WATCH

Week 18 (April 28 to May 4, 2013)

RESPIRATORY SYNCYTIAL VIRUS (RSV)

Figure 8: Number of positive RSV specimens by report week, Nova Scotia, 2012–2013

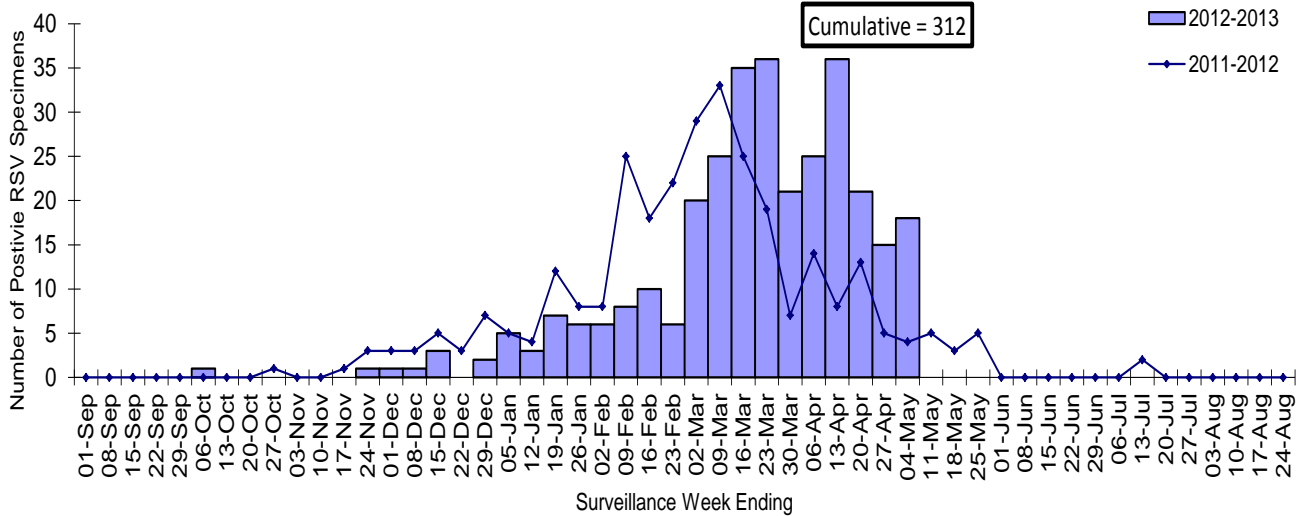
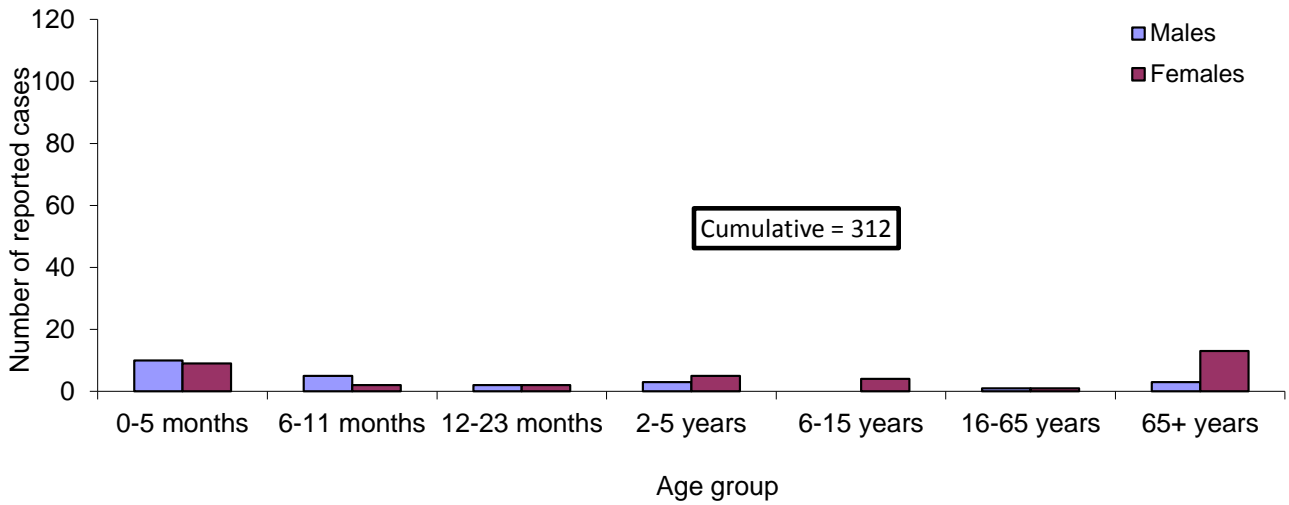


Figure 9: Cumulative number of positive RSV specimens by age group and sex, Nova Scotia, 2012-2013



RESPIRATORY WATCH

Week 18 (April 28 to May 4, 2013)

OTHER RESPIRATORY PATHOGENS

Table 3: Total number of specimens tested and number (%) positive for other respiratory pathogens, by report week and cumulative season, Nova Scotia, 2012–2013

Number and percent positive for:	Surveillance Week			Cumulative Season-to-Date Totals		
	n tested	n positive	% positive	n tested	n positive	% positive
Adenovirus	20	0	0.0	582	0	0.0
Bocavirus	20	0	0.0	582	2	0.3
Chlamydomphila pneumoniae	11	0	0.0	513	28	5.5
Coronavirus	20	0	0.0	582	37	6.4
Enterovirus	20	0	0.0	573	4	0.7
Metapneumovirus	20	6	30.0	582	23	4.0
Mycoplasma pneumoniae	11	1	9.1	513	65	12.7
Parainfluenza	20	2	10.0	582	35	6.0
Pertussis	2	0	0.0	252	14	5.6
Respiratory syncytial virus A	20	1	0.0	528	13	2.5
Respiratory syncytial virus B	20	0	0.0	528	4	0.8
Respiratory syncytial virus not typed	38	17	44.7	1618	295	18.2
Rhinovirus	20	3	15.0	582	64	11.0

RESPIRATORY WATCH

Week 18 (April 28 to May 4, 2013)

APPENDIX: Definitions used in Influenza Surveillance, 2012-2013

1) ILI in the general population:

Acute onset of respiratory illness with fever and cough and with one or more of the following - sore throat, arthralgia, myalgia, or prostration which is likely due to influenza. In children under 5, gastrointestinal symptoms may also be present. In patients under 5 or 65 and older, fever may not be prominent.

2) Outbreaks of influenza / ILI by setting:

Schools and Daycares:

Greater than 10% absenteeism (or absenteeism that is higher (e.g. >5-10%) than expected level as determined by school or public health authority) which is likely due to ILI.

Hospitals and residential institutions:

Two or more cases of ILI within a seven-day period, including at least one laboratory confirmed case. Institutional outbreaks should be reported within 24 hours of identification. Residential institutions include but not limited to long-term care facilities (LTCF) and prisons.

Other Settings:

Two or more cases of ILI within a seven-day period, including at least one laboratory confirmed case; i.e. closed communities.

3) National FluWatch Definitions for Influenza Activity Levels:

Influenza activity levels are defined as:

- | | |
|-------------------------|--|
| 1 = No activity: | i.e. no laboratory-confirmed influenza detections in the reporting week, however, sporadically occurring ILI* may be reported |
| 2 = Sporadic: | sporadically occurring ILI* and lab confirmed influenza detection(s) with no outbreaks detected within the influenza surveillance region† |
| 3 = Localized: | (1) evidence of increased ILI* and
(2) lab confirmed influenza detection(s) together with
(3) outbreaks in schools, hospitals, residential institutions and/or other types of facilities occurring in less than 50% of the influenza surveillance region † |
| 4 = Widespread: | (1) evidence of increased ILI* and
(2) lab confirmed influenza detection(s) together with
(3) outbreaks in schools, hospitals, residential institutions and/or other types of facilities occurring in greater than or equal to 50% of the influenza surveillance region † |

* ILI data may be reported through sentinel physicians, emergency room visits or health line telephone calls.

† Sub-regions within the province or territory as defined by the provincial/territorial epidemiologist.

RESPIRATORY WATCH

Week 18 (April 28 to May 4, 2013)

- 4) District Health Authorities (DHAs), Nova Scotia:
- DHA 1 – South Shore Health
 - DHA 2 – South West Health
 - DHA 3 – Annapolis Valley Health
 - DHA 4 – Colchester East Hants Health Authority
 - DHA 5 – Cumberland Health Authority
 - DHA 6 – Pictou County Health Authority
 - DHA 7 – Guysborough Antigonish Strait Health Authority
 - DHA 8 – Cape Breton District Health Authority
 - DHA 9 – Capital Health