

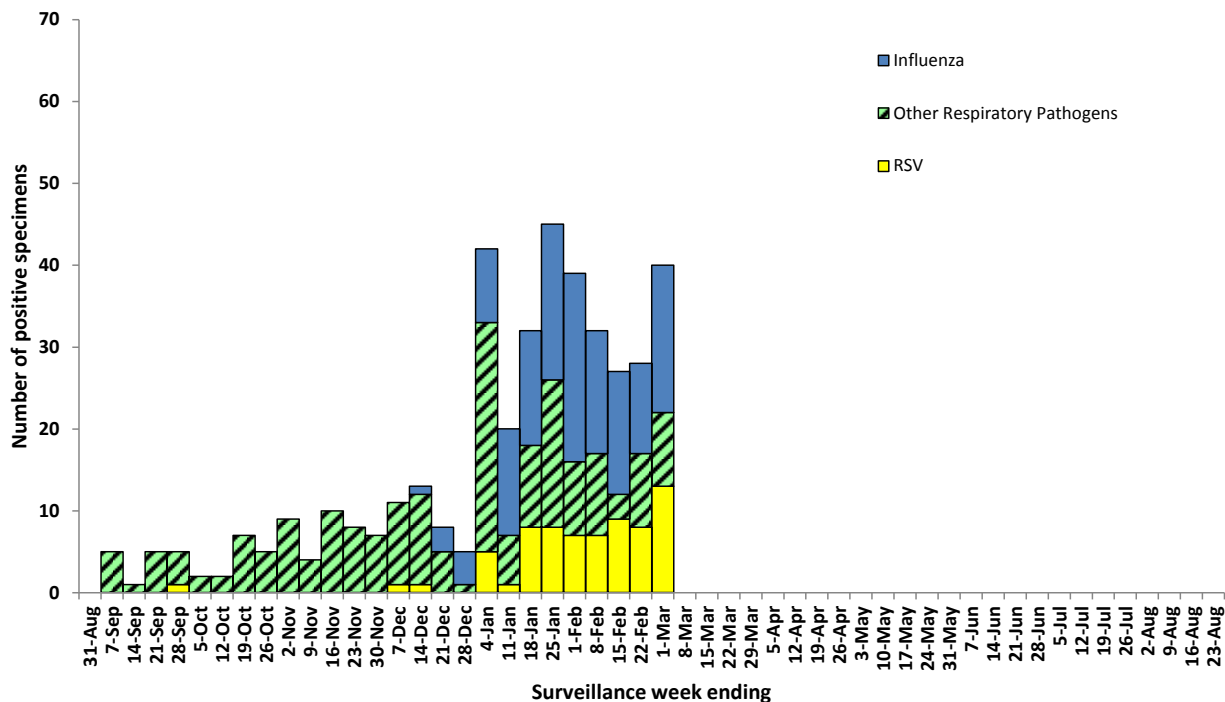
Summary of Nova Scotia surveillance findings, for the period ending March 1, 2014:

- Influenza activity continues. Nine positive results were received this week. There have been 144 lab confirmed* cases of influenza this season (106 pH1N1, 6 influenza A H3, 29 influenza A not subtyped and 3 influenza B).
- Positive results were received chlamydomphila pneumonia, coronavirus, metapneumovirus, mycoplasma pneumonia, rhinovirus and RSV.
- There have been 25 ICU admissions of laboratory confirmed influenza for the 2013-2014 influenza season (18 pH1N1, 6 Influenza A not subtyped, and 1 influenza A H3). Age range 6 – 77 years of age, median age 60 years. 17 males and 8 females.
- There have been 6 influenza deaths** for the 2013-2014 influenza season.
- The ILI rate for Nova Scotia for this reporting period was 1.6% (1.6% in week 8).
- **Ninety-seven percent** of emergency departments reported ILI rates for this reporting week

*Lab confirmed cases of influenza are only the ‘tip of the iceberg’, representing a fraction of individuals infected. Laboratory testing is reserved for patients admitted to hospital with respiratory infection. Because we do not routinely test community specimens, the number of laboratory confirmed cases is an underestimation of the true number of infections.

**Deaths include individuals with a positive influenza test result. For some individuals with pre-existing conditions, influenza may not have been the major contributing cause of death or hospitalization.

Figure 1: Summary of laboratory detected circulating respiratory pathogens, Nova Scotia, 2013–2014

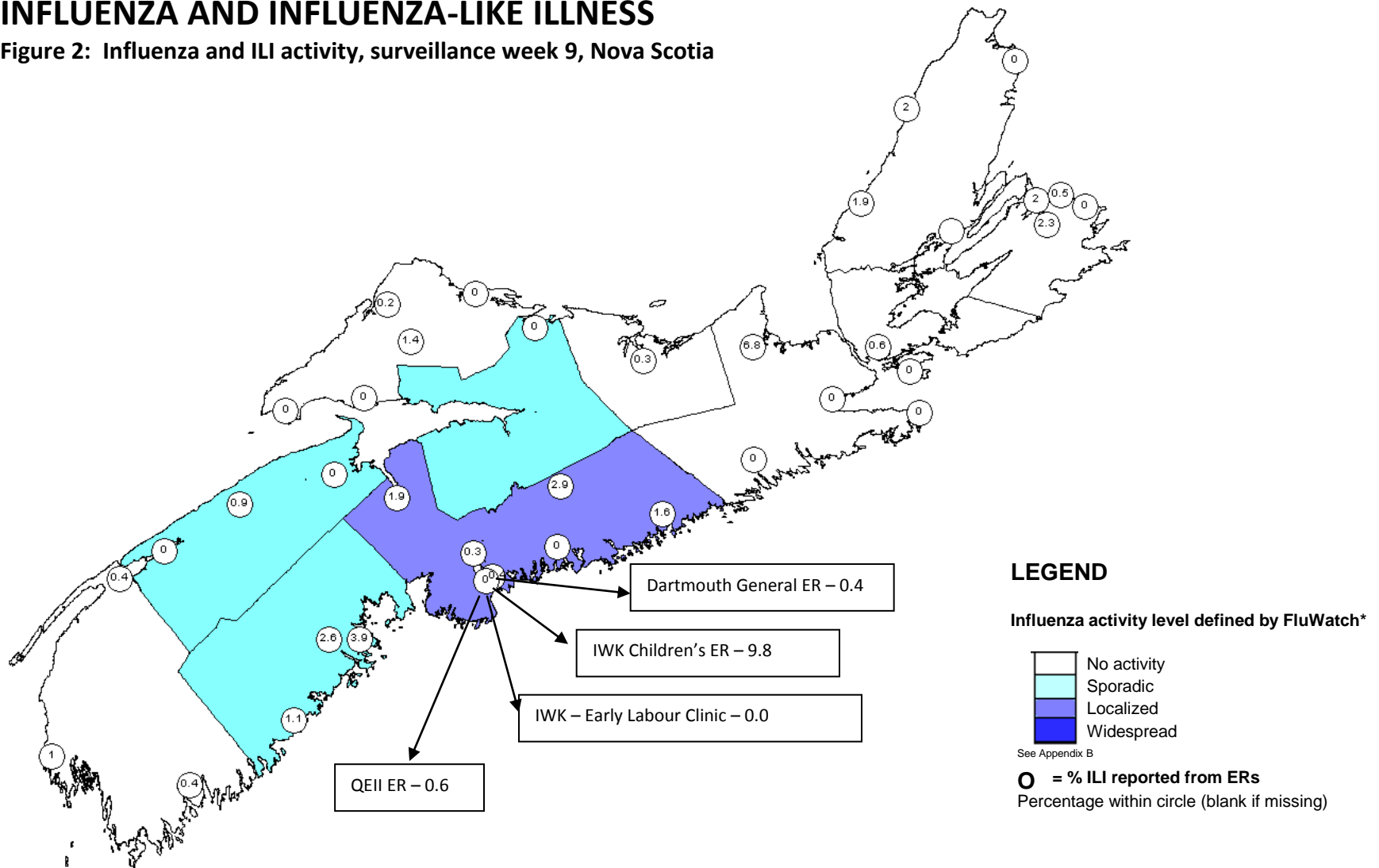


RESPIRATORY WATCH

Week 9 (February 23 to March 1, 2014)

INFLUENZA AND INFLUENZA-LIKE ILLNESS

Figure 2: Influenza and ILI activity, surveillance week 9, Nova Scotia



RESPIRATORY WATCH

Week 9 (February 23 to March 1, 2014)

Figure 3: Number of reported lab-confirmed influenza cases by type and report week, Nova Scotia, 2013–2014

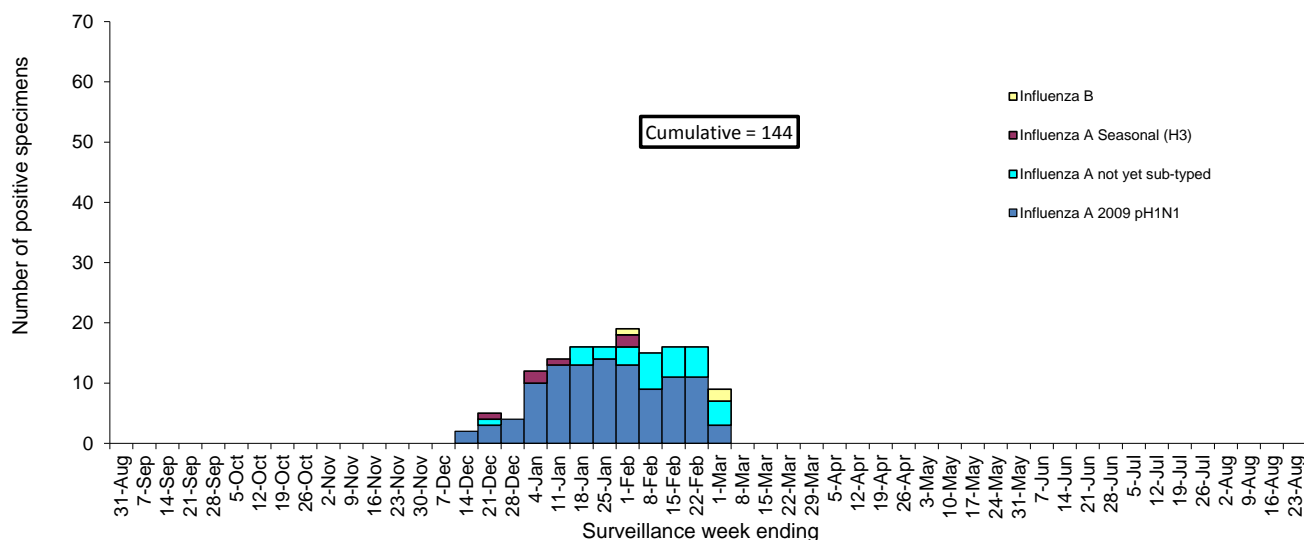
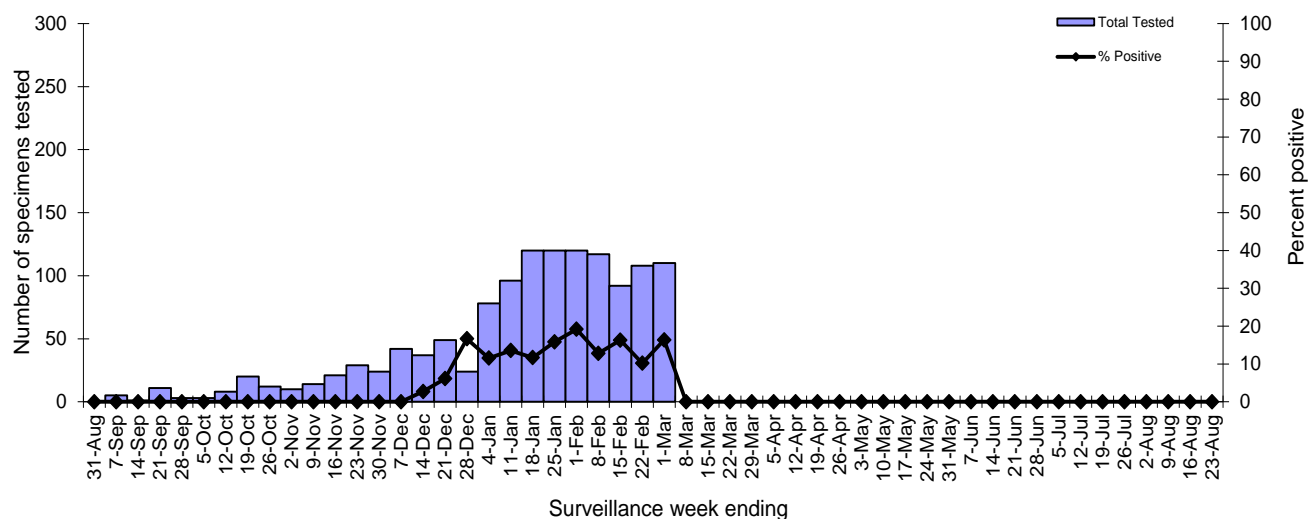


Figure 4: Number of specimens tested for influenza and percent positive, Nova Scotia Provincial Public Health Laboratory Network, 2013–2014*



*Data presented in this figure refers to week specimen was tested.

Table 1: Influenza case counts by DHA, current surveillance week and cumulative, Nova Scotia, 2013–2014

	DHA 1	DHA 2	DHA 3	DHA 4	DHA 5	DHA 6	DHA 7	DHA 8	DHA 9	Nova Scotia
Influenza A 2009 pH1N1										
Current Week	0	0	1	0	0	0	0	0	2	3
Cumulative 2013 - 2014	3	4	6	6	4	3	12	10	58	106
Influenza A (not yet sub-typed)										
Current Week	1	0	1	0	0	0	0	0	2	4
Cumulative 2013 - 2014	1	1	1	1	4	0	0	11	10	29
Influenza A Seasonal (H3)										
Current Week	0	0	0	0	0	0	0	0	0	0
Cumulative 2013 - 2014	0	3	1	0	0	0	0	0	2	6
Influenza B										
Current Week	0	0	1	1	0	0	0	0	0	2
Cumulative 2013 - 2014	0	0	1	1	0	0	0	0	1	3

RESPIRATORY WATCH

Week 9 (February 23 to March 1, 2014)

Figure 5: Influenza rate per 100,000 population by type and age group, cumulative, Nova Scotia, 2013–2014

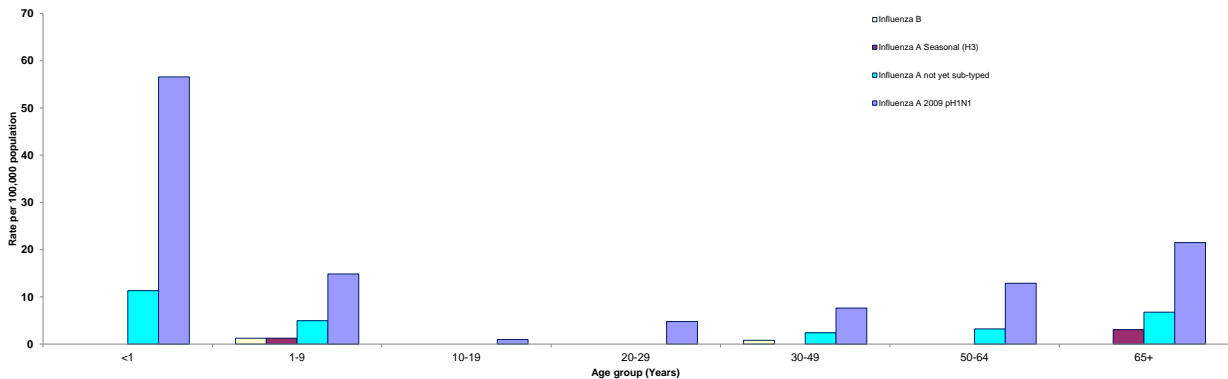
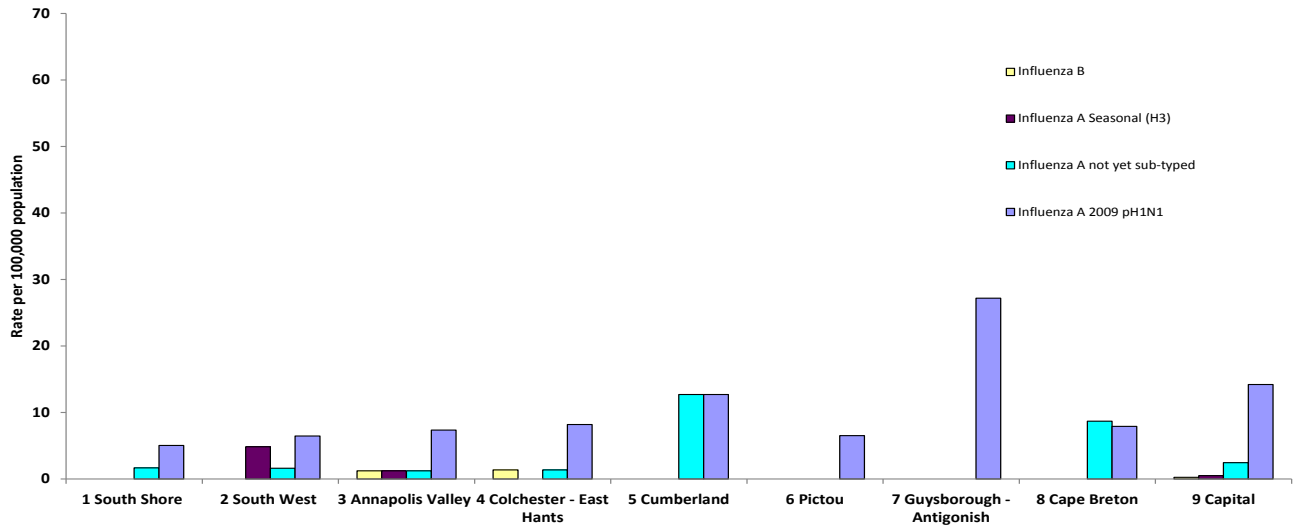


Figure 6: Influenza rate per 100,000 population by type and DHA, cumulative, Nova Scotia, 2013–2014



*Data presented in this figure refers to week specimen was tested. District Health Authority

Table 2: ILI reporting from emergency departments and FluWatch sentinel physicians, Nova Scotia, 2013-2014

	ER SURVEILLANCE			SENTINEL SURVEILLANCE*		
	%ILI	Reporting ERs		%ILI	Reporting Sentinels	
DHA 1	2.5	3	of 3	0.0	1 of 6	
DHA 2	0.8	3	of 3	-	0 of 0	
DHA 3	0.3	3	of 3	0.0	1 of 1	
DHA 4	2.0	2	of 2	-	0 of 0	
DHA 5	0.3	5	of 5	0.0	1 of 2	
DHA 6	0.3	1	of 1	-	0 of 2	
DHA 7	3.6	6	of 6	-	0 of 1	
DHA 8	1.5	7	of 8	0.0	1 of 4	
DHA 9	0.6	7	of 7	0.0	2 of 14	
IWK	7.9	1	of 1			
Nova Scotia (excl. IWK)†	1.1	37	of 38	97.4%		
Nova Scotia (incl. IWK)	1.6	38	of 39	97.4%	6	of 30
					20.0%	

*Flu watch sentinels

†Excludes the children's ER from IWK

RESPIRATORY WATCH

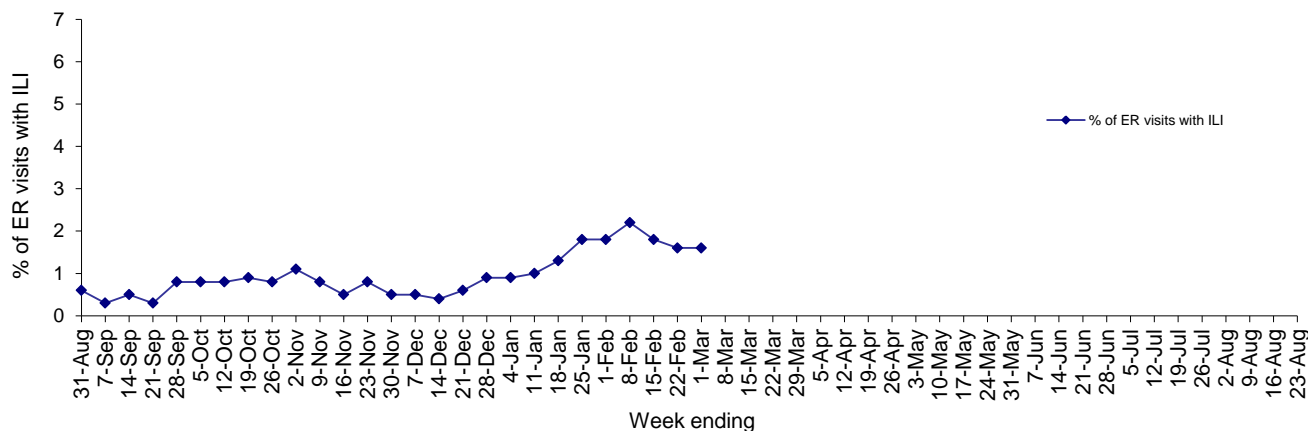
Week 9 (February 23 to March 1, 2014)

Table 3: Hospitalizations, ICU Admissions and Deaths for influenza positive patients, Nova Scotia, 2013-2014

	Hospitalized*	ICU	Death
Influenza A 2009 pH1N1			
Current Week	1	1	0
Cumulative 2013 - 2014	64	18	6
Influenza A (not yet sub-typed)			
Current Week	3	1	0
Cumulative 2013 - 2014	16	6	0
Influenza A Seasonal (H3)			
Current Week	0	0	0
Cumulative 2013 - 2014	3	1	0
Influenza B			
Current Week	2	0	0
Cumulative 2013 - 2014	3	0	0
Current Week Total	6	2	0
Season Total	86	25	6

* Note: Hospitalized cases exclude ICU admissions

Figure 7: Percentage of ER visits with ILI, Nova Scotia, 2013–2014



RESPIRATORY WATCH

Week 9 (February 23 to March 1, 2014)

RESPIRATORY SYNCYTIAL VIRUS (RSV)

Figure 8: Number of positive RSV specimens by report week, Nova Scotia, 2013–2014

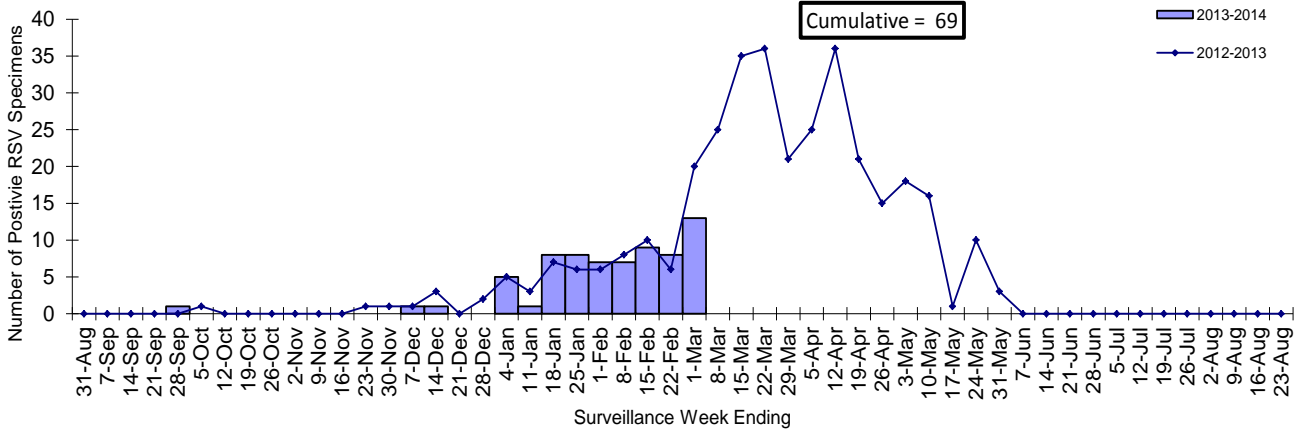
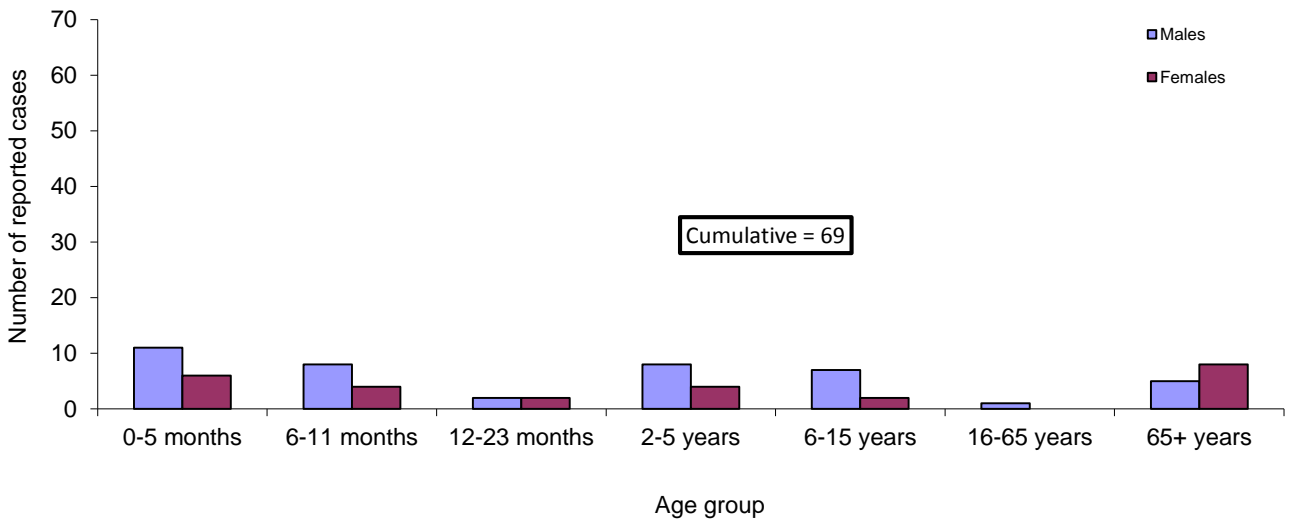


Figure 9: Cumulative number of positive RSV specimens by age group and sex, Nova Scotia, 2013-2014



RESPIRATORY WATCH

Week 9 (February 23 to March 1, 2014)

OTHER RESPIRATORY PATHOGENS

Table 4: Total number of specimens tested and number (%) positive for other respiratory pathogens, by report week and cumulative season, Nova Scotia, 2013–2014

Number and percent positive for:	Surveillance Week			Cumulative		
	n tested	n positive	% positive	Season-to-Date	Totals	
	n tested	n positive	% positive	n tested	n positive	% positive
Adenovirus	18	0	0.0	559	1	0.2
Bocavirus	18	0	0.0	559	2	0.4
Chlamydophila pneumoniae	16	1	6.3	319	5	1.6
Coronavirus	18	1	5.6	559	11	2.0
Enterovirus	18	0	0.0	559	0	0.0
Metapneumovirus	18	5	27.8	559	24	4.3
Mycoplasma pneumoniae	19	2	10.5	319	49	15.4
Parainfluenza	18	0	0.0	559	40	7.2
Pertussis	19	0	0.0	160	4	2.5
Respiratory syncytial virus A	18	0	0.0	559	0	0.0
Respiratory syncytial virus B	18	1	5.6	559	3	0.5
Respiratory syncytial virus not typed	70	12	17.1	670	66	9.9
Rhinovirus	18	1	5.6	559	62	11.1

RESPIRATORY WATCH

Week 9 (February 23 to March 1, 2014)

APPENDIX: Definitions used in Influenza Surveillance, 2013-2014

1) ILI in the general population:

Acute onset of respiratory illness with fever and cough and with one or more of the following - sore throat, arthralgia, myalgia, or prostration which is likely due to influenza. In children under 5, gastrointestinal symptoms may also be present. In patients under 5 or 65 and older, fever may not be prominent.

2) Outbreaks of influenza / ILI by setting:

Schools and Daycares:

Greater than 10% absenteeism (or absenteeism that is higher (e.g. >5-10%) than expected level as determined by school or public health authority) which is likely due to ILI.

Hospitals and residential institutions:

Two or more cases of ILI within a seven-day period, including at least one laboratory confirmed case. Institutional outbreaks should be reported within 24 hours of identification. Residential institutions include but not limited to long-term care facilities (LTCF) and prisons.

Other Settings:

Two or more cases of ILI within a seven-day period, including at least one laboratory confirmed case; i.e. closed communities.

3) National FluWatch Definitions for Influenza Activity Levels:

Influenza activity levels are defined as:

- | | |
|-------------------------|----------------------------------------------------------------------------------------------------------------------------------------------------------------------------------------------------------------------------------------------------------------------------------------|
| 1 = No activity: | i.e. no laboratory-confirmed influenza detections in the reporting week, however, sporadically occurring ILI* may be reported |
| 2 = Sporadic: | sporadically occurring ILI* and lab confirmed influenza detection(s) with no outbreaks detected within the influenza surveillance region† |
| 3 = Localized: | (1) evidence of increased ILI* and
(2) lab confirmed influenza detection(s) together with
(3) outbreaks in schools, hospitals, residential institutions and/or other types of facilities occurring in less than 50% of the influenza surveillance region † |
| 4 = Widespread: | (1) evidence of increased ILI* and
(2) lab confirmed influenza detection(s) together with
(3) outbreaks in schools, hospitals, residential institutions and/or other types of facilities occurring in greater than or equal to 50% of the influenza surveillance region † |

* ILI data may be reported through sentinel physicians, emergency room visits or health line telephone calls.

† Sub-regions within the province or territory as defined by the provincial/territorial epidemiologist.

RESPIRATORY WATCH

Week 9 (February 23 to March 1, 2014)

- 4) District Health Authorities (DHAs), Nova Scotia:
- DHA 1 – South Shore Health
 - DHA 2 – South West Health
 - DHA 3 – Annapolis Valley Health
 - DHA 4 – Colchester East Hants Health Authority
 - DHA 5 – Cumberland Health Authority
 - DHA 6 – Pictou County Health Authority
 - DHA 7 – Guysborough Antigonish Strait Health Authority
 - DHA 8 – Cape Breton District Health Authority
 - DHA 9 – Capital Health