

# RESPIRATORY WATCH

Weeks 24-25 (June 8, 2025 to June 21, 2025)

## Highlights of this two week reporting period<sup>1</sup>

The 2024-2025 season runs from August 25, 2024 to August 29, 2025

### Activity levels<sup>2</sup>

- Influenza activity in this reporting period (weeks 24 and 25)(N=5) was lower than the previous reporting period (weeks 22 and 23)(N=22).
  - The total number of PCR positive cases in this reporting period (N=5) was lower than the number in the same reporting period in the 2023/24 season (N=10).
- COVID-19 activity in this reporting period (weeks 24 and 25)(N=35) was lower than the previous reporting period (weeks 22 and 23)(N=68).
  - The total number of PCR positive cases in this reporting period (N=35) was lower than the number in the same reporting period in the 2023/24 season (N=108).
- RSV activity in this reporting period (weeks 24 and 25)(N=3) was lower than the previous reporting period (weeks 22 and 23)(N=6).
  - The total number of PCR-positive cases in this reporting period (N=3) was similar to the number in the same reporting period in the 2023/24 season (N=3).

### Influenza, COVID-19, and respiratory syncytial virus (RSV) activity during this two week reporting period and the 2024/25 season

	Influenza		COVID-19		RSV	
	This reporting period	2024/25 season	This reporting period	2024/25 season	This reporting period	2024/25 season
<b>Laboratory testing</b>						
New laboratory-confirmed cases	5	6167	35	4404	3	2355
Percent positivity (%) <sup>3</sup>	0.4	-	2.9	-	0.2	-
<b>Severe outcome<sup>4</sup></b>						
Hospitalizations (non-ICU)	2	1180	0	710		
ICU admissions	0	121	0	73		
Deaths	0	133	0	120		
<b>Outbreaks<sup>5</sup></b>						
Acute-care facility	0	30	0	48	0	5
Long-term care facility	0	90	3	142	0	30

### LI activity<sup>6</sup>

During this reporting period, the percentages of emergency room visits for influenza like illness (ILI) were 0.5% in week 24 and 0.1% in week 25, which were similar to weeks 22 (0.6%) and 23 (0.3%).

<sup>1</sup> See data notes in Appendix.

<sup>2</sup> Use of multiplex polymerase chain reaction (PCR) respiratory virus testing may affect the number of tests conducted and number of cases identified and reported.

<sup>3</sup> Percent positivity is useful for understanding current pathogen spread in the community.

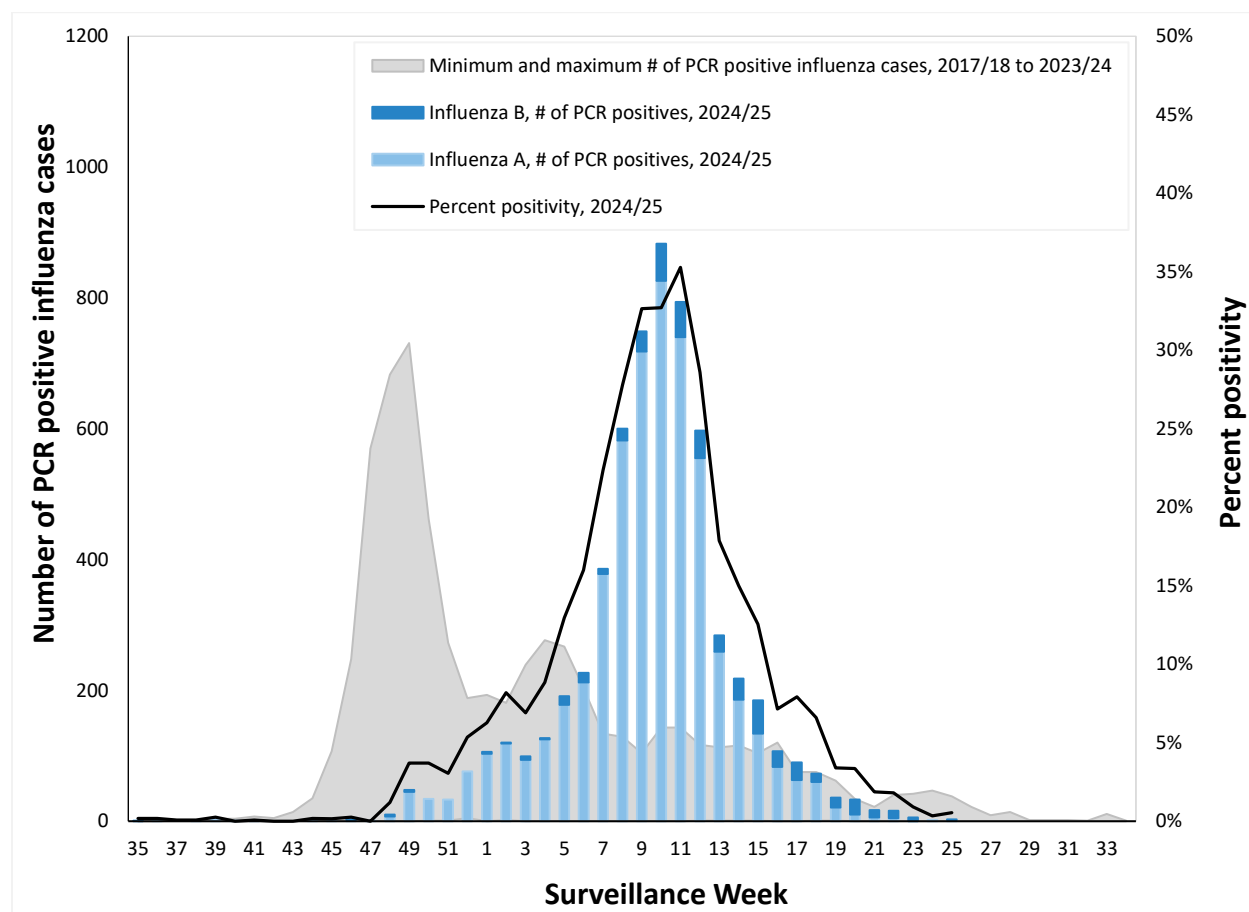
<sup>4</sup> New hospitalizations, ICU admissions, and deaths in recent surveillance weeks may be undercounted because of reporting delays. Outcomes are not reported for RSV because it is not a notifiable condition in Nova Scotia.

<sup>5</sup> Local public health continuously enters and updates outbreak data. Counts may differ from previous surveillance weeks.

<sup>6</sup> ILI percentages may vary from previous surveillance weeks as emergency departments continuously enter and update data.

## Influenza

**Figure 1: Laboratory-confirmed influenza cases (N=6167) and percent positivity by surveillance week, 2024/25 season, compared with previous seasons, Nova Scotia<sup>7</sup>**



<sup>7</sup> Minimum is zero during reporting weeks with no positive specimen in seasons 2019/20 to 2023/24. There were no influenza cases reported during the 2020-2021 season. Local public health continuously enters and updates influenza case data and counts may differ from previous surveillance weeks.

## Weeks 24-25 (June 8, 2025 to June 21, 2025)

**Table 1: Number of laboratory-confirmed influenza cases during current reporting period and cumulative 2024/25 season, by zone, Nova Scotia<sup>8</sup>**

Zone	Current reporting period			Cumulative (2024/25)		
	Influenza A	Influenza B	Total	Influenza A	Influenza B	Total
Western	1	1	2	1390	110	1500
Northern	1	0	1	1429	241	1670
Eastern	0	0	0	1328	31	1359
Central	2	0	2	1524	114	1638
<b>Nova Scotia Total</b>	<b>4</b>	<b>1</b>	<b>5</b>	<b>5671</b>	<b>496</b>	<b>6167</b>

**Table 2: Number of laboratory-confirmed influenza cases during current reporting period and cumulative 2024/25 season, by age groups, Nova Scotia<sup>8</sup>**

Age group (years)	Current reporting period			Cumulative (2024/25)		
	Influenza A	Influenza B	Total	Influenza A	Influenza B	Total
0-4	0	0	0	475	42	517
5-19	1	1	2	647	200	847
20-44	0	0	0	987	176	1163
45-64	1	0	1	1314	51	1365
≥ 65	2	0	2	2248	27	2275
<b>Nova Scotia Total</b>	<b>4</b>	<b>1</b>	<b>5</b>	<b>5671</b>	<b>496</b>	<b>6167</b>

**Table 3: Cumulative number of hospitalizations, ICU admissions, and deaths among lab-confirmed influenza positive patients, 2024/25 season, Nova Scotia<sup>9</sup>**

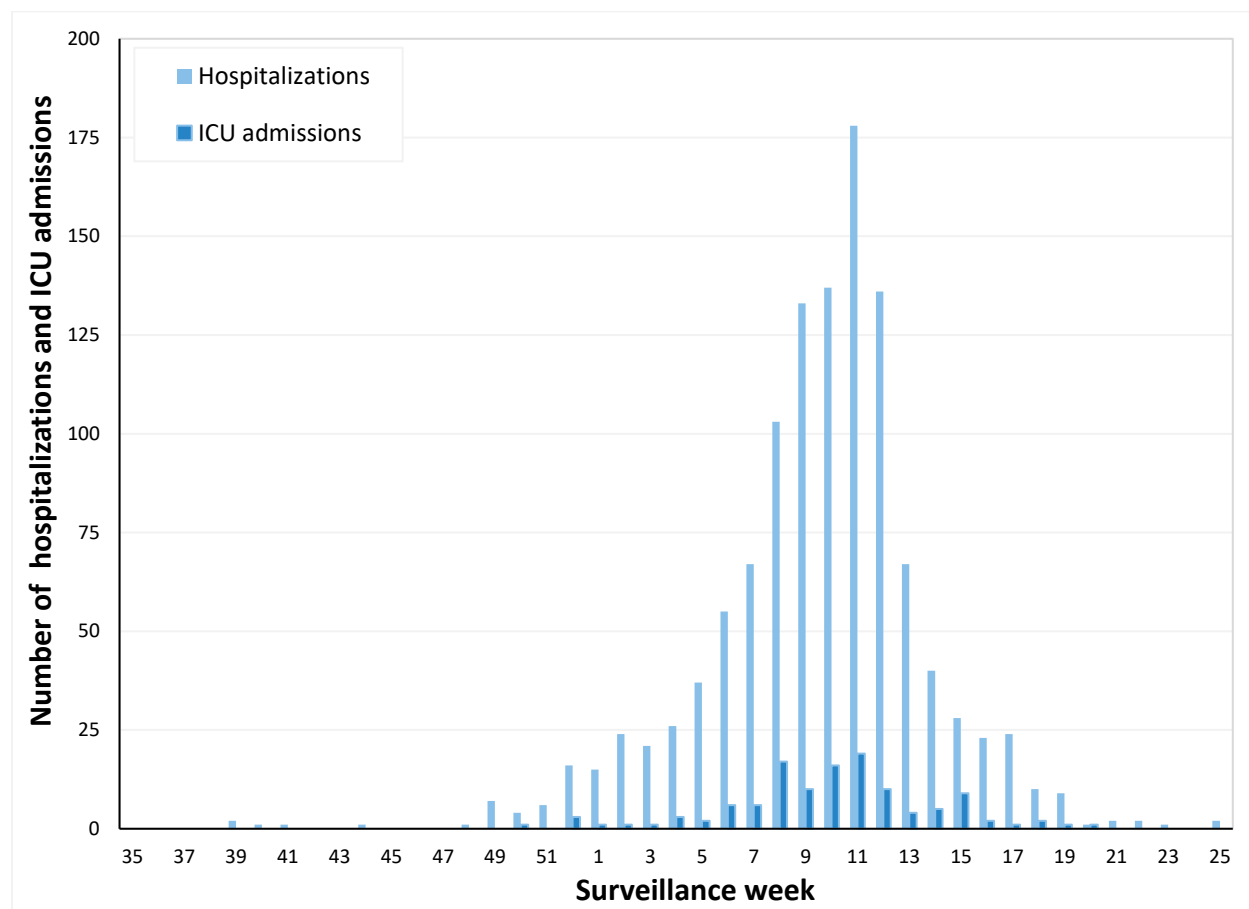
Age group (years)	Cumulative (2024/25)		
	Hospitalizations	ICU	Deaths
0-4	48	2	0
5-19	83	3	1
20-44	79	11	3
45-64	234	49	27
≥ 65	736	56	102
<b>Nova Scotia Total</b>	<b>1180</b>	<b>121</b>	<b>133</b>

<sup>8</sup> Local public health continuously enters and updates influenza case data and counts may differ from previous surveillance weeks.

<sup>9</sup> Individuals may be included in multiple columns if they have more than one severe outcome (i.e., categories are not mutually exclusive). Recent hospitalizations, ICU admissions, and deaths may be undercounted due to delays in reporting.

**Weeks 24-25 (June 8, 2025 to June 21, 2025)**

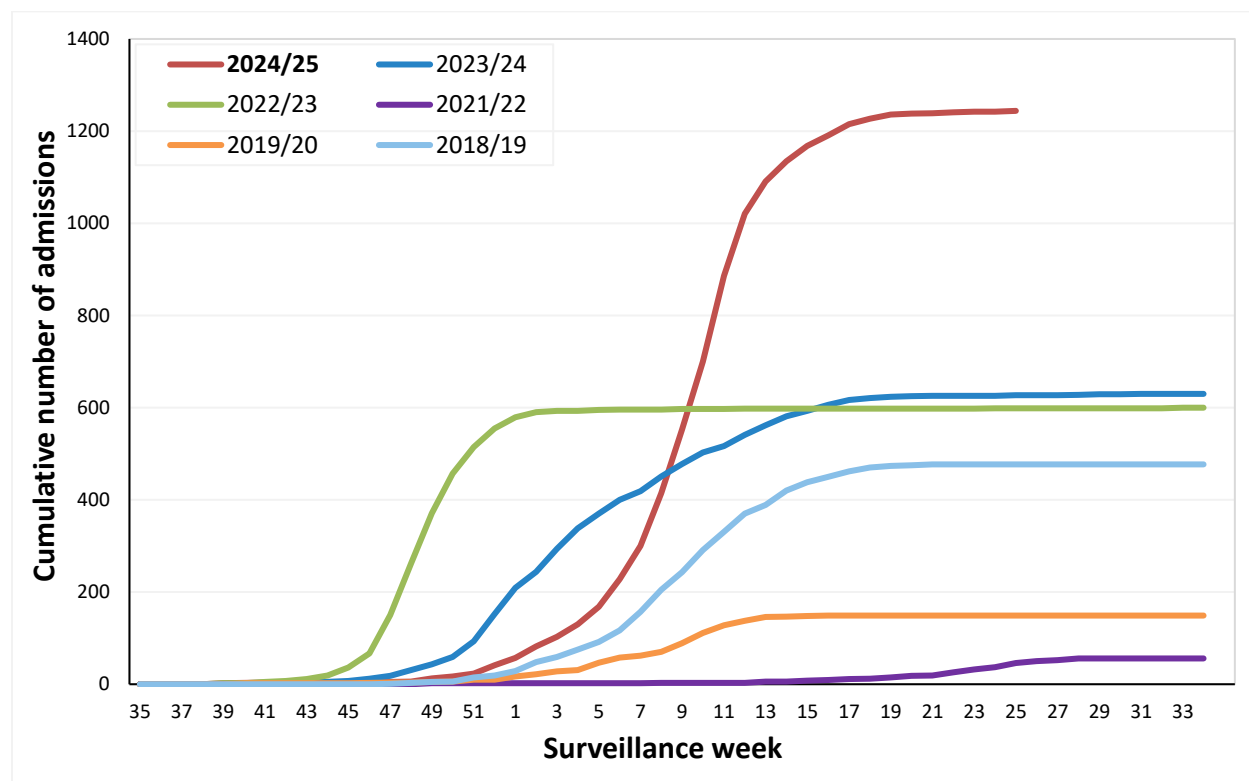
**Figure 2: Number of influenza hospitalizations and ICU admissions by surveillance week, 2024/25 season, Nova Scotia<sup>10</sup>**



<sup>10</sup> Cases who are hospitalized and admitted to the ICU in the same surveillance week will be included in both the hospitalization and ICU counts for that surveillance week. Recent hospitalizations and ICU admissions may be undercounted due to delays in reporting.

Weeks 24-25 (June 8, 2025 to June 21, 2025)

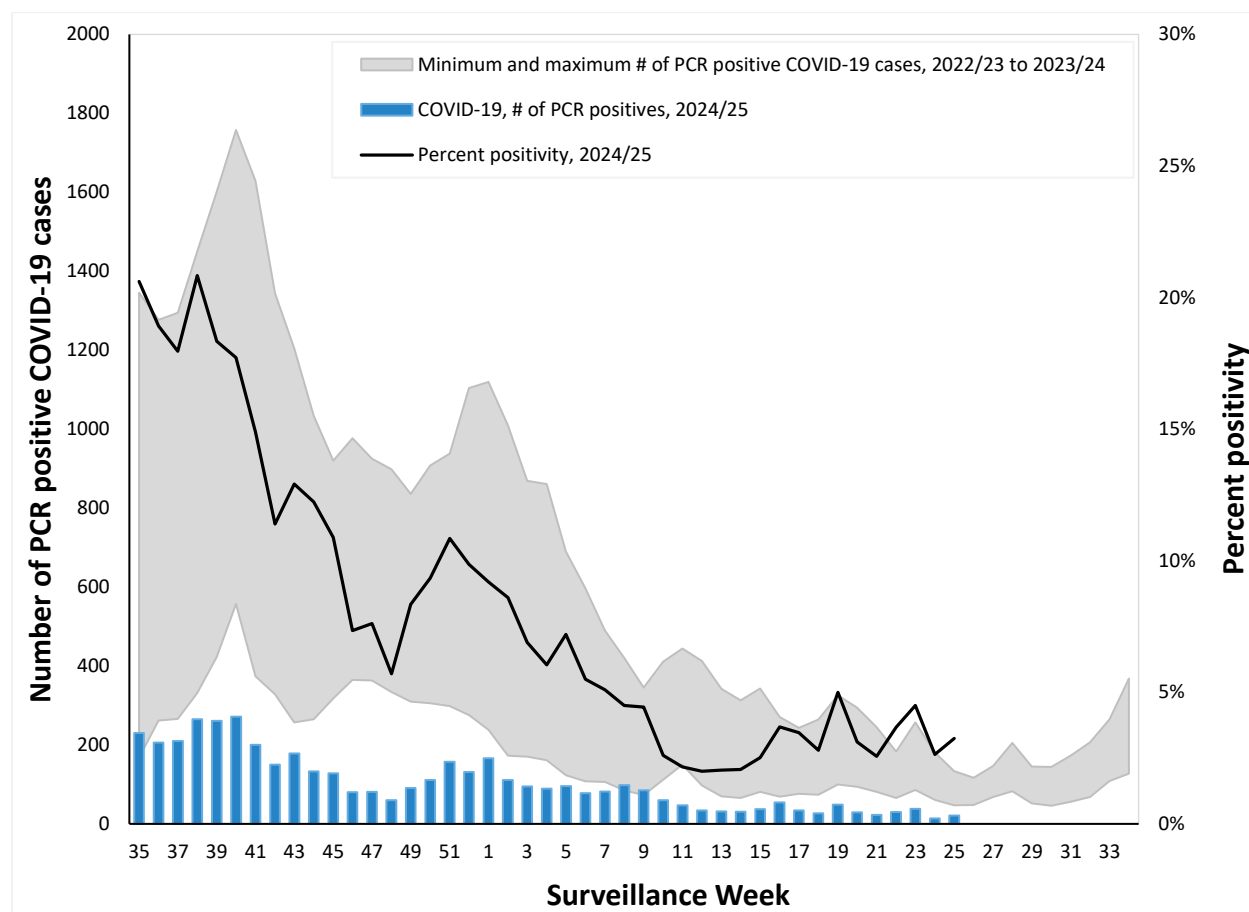
Figure 3: Cumulative number of hospitalizations and ICU admissions for influenza by surveillance week, 2024/25 season compared with previous seasons, Nova Scotia<sup>11</sup>



<sup>11</sup> Figure 3 presents the cumulative number of cases who were admitted to hospital and/or ICU during the season. Cases are counted once. There were no reported cases of influenza during the 2020-2021 season.

## COVID-19

**Figure 4: Number of laboratory-confirmed COVID-19 cases (N=4404) and percent positivity, 2024/25 season, compared with previous seasons, Nova Scotia<sup>12</sup>**



**Table 4: Number of laboratory-confirmed COVID-19 cases during current reporting period and cumulative 2024/25 season, by zone, Nova Scotia<sup>12</sup>**

Zone	Current reporting period	Cumulative (2024/25)
Western	9	954
Northern	6	1005
Eastern	3	783
Central	17	1662
<b>Nova Scotia Total</b>	<b>35</b>	<b>4404</b>

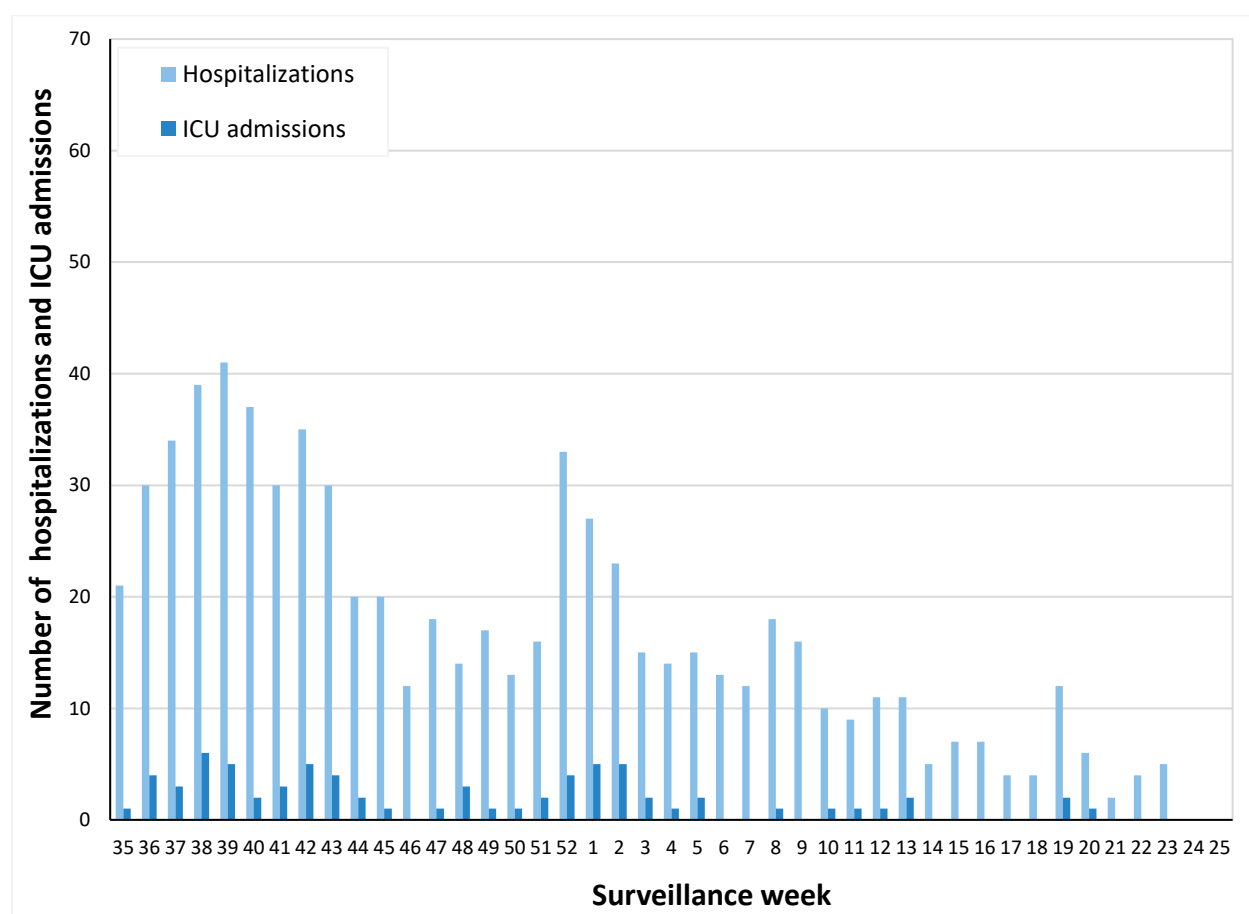
<sup>12</sup> Local public health continuously enters and updates COVID-19 case data. Counts may differ from previous surveillance weeks.

## Weeks 24-25 (June 8, 2025 to June 21, 2025)

**Table 5. Number of laboratory-confirmed COVID-19 cases during current reporting period and cumulative 2024/25 season, by age group, Nova Scotia<sup>13</sup>**

Age group (years)	Current reporting period	Cumulative (2024/25)
0-4	1	122
5-19	0	120
20-44	4	496
45-64	4	712
≥ 65	26	2954
<b>Nova Scotia Total</b>	<b>35</b>	<b>4404</b>

**Figure 5: Number of COVID-19 hospitalizations and ICU admissions by week, 2024/25 season, Nova Scotia<sup>14</sup>**



<sup>13</sup> Local public health continuously enters and updates COVID-19 case data. Counts may differ from previous surveillance weeks.

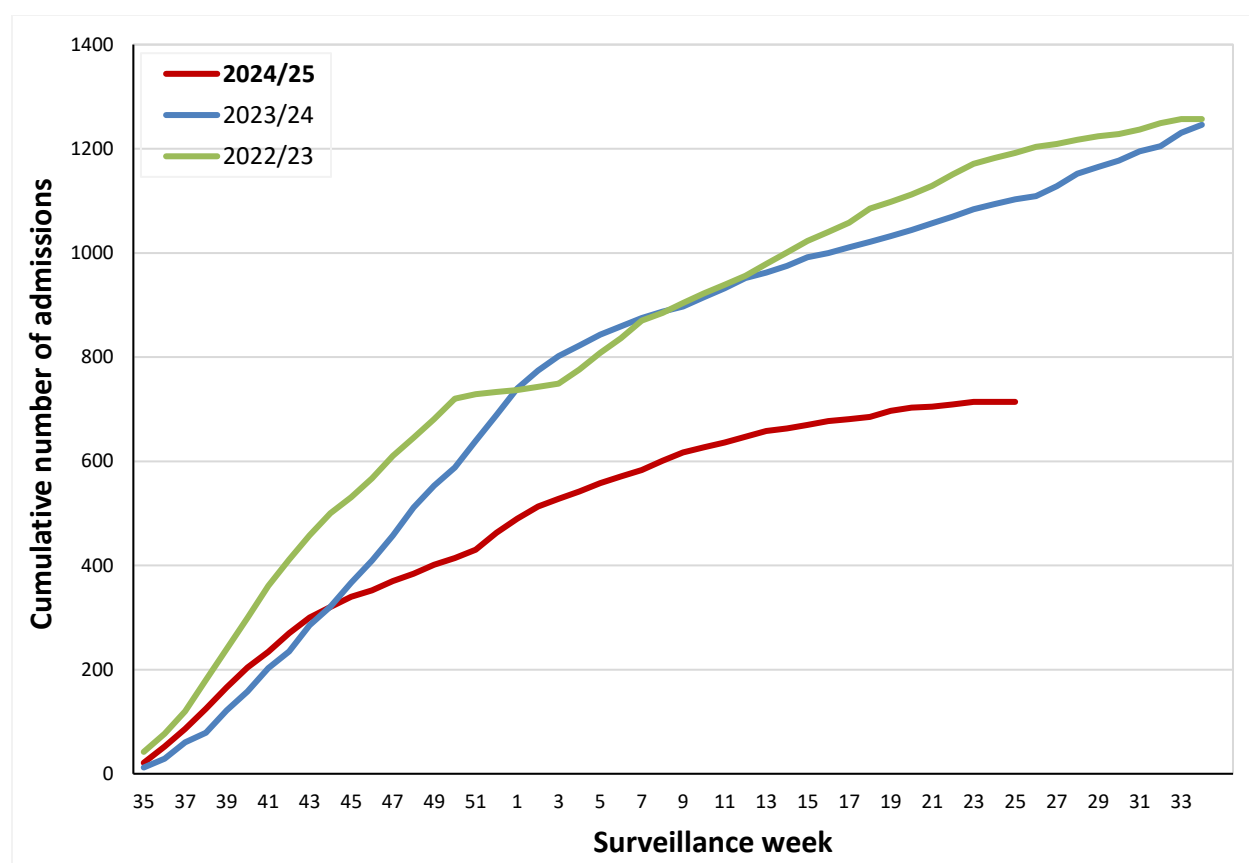
<sup>14</sup> Cases who are hospitalized and admitted to the ICU in the same surveillance week will be included in both the hospitalization and ICU counts for that surveillance week. Recent hospitalizations and ICU admissions may be undercounted due to delays in reporting.

### Weeks 24-25 (June 8, 2025 to June 21, 2025)

**Table 6: Cumulative number of hospitalizations, ICU admissions, and deaths among COVID-19 positive patients, 2024/25 season, Nova Scotia<sup>15</sup>**

Age group (years)	Cumulative (2024/25)		
	Hospitalizations	ICU admissions	Deaths
0-4	16	2	0
5-19	8	2	0
20-44	16	3	3
45-64	74	13	6
≥ 65	596	53	111
<b>Nova Scotia Total</b>	<b>710</b>	<b>73</b>	<b>120</b>

**Figure 6: Cumulative number of COVID-19 hospitalizations and ICU admissions, by surveillance week, 2024/25 season compared with previous seasons, Nova Scotia<sup>16</sup>**



<sup>15</sup> Cases can have more than one severe outcome (e.g., be hospitalized and then admitted to the ICU); therefore, cases may be counted multiple times if they have more than one severe outcome (i.e., categories are not mutually exclusive). Recent hospitalizations, ICU admissions, and deaths may be undercounted due to delays in reporting

<sup>16</sup> Figure 6 presents the cumulative number of cases who were admitted to hospital and/or ICU during the season. Cases are counted once.



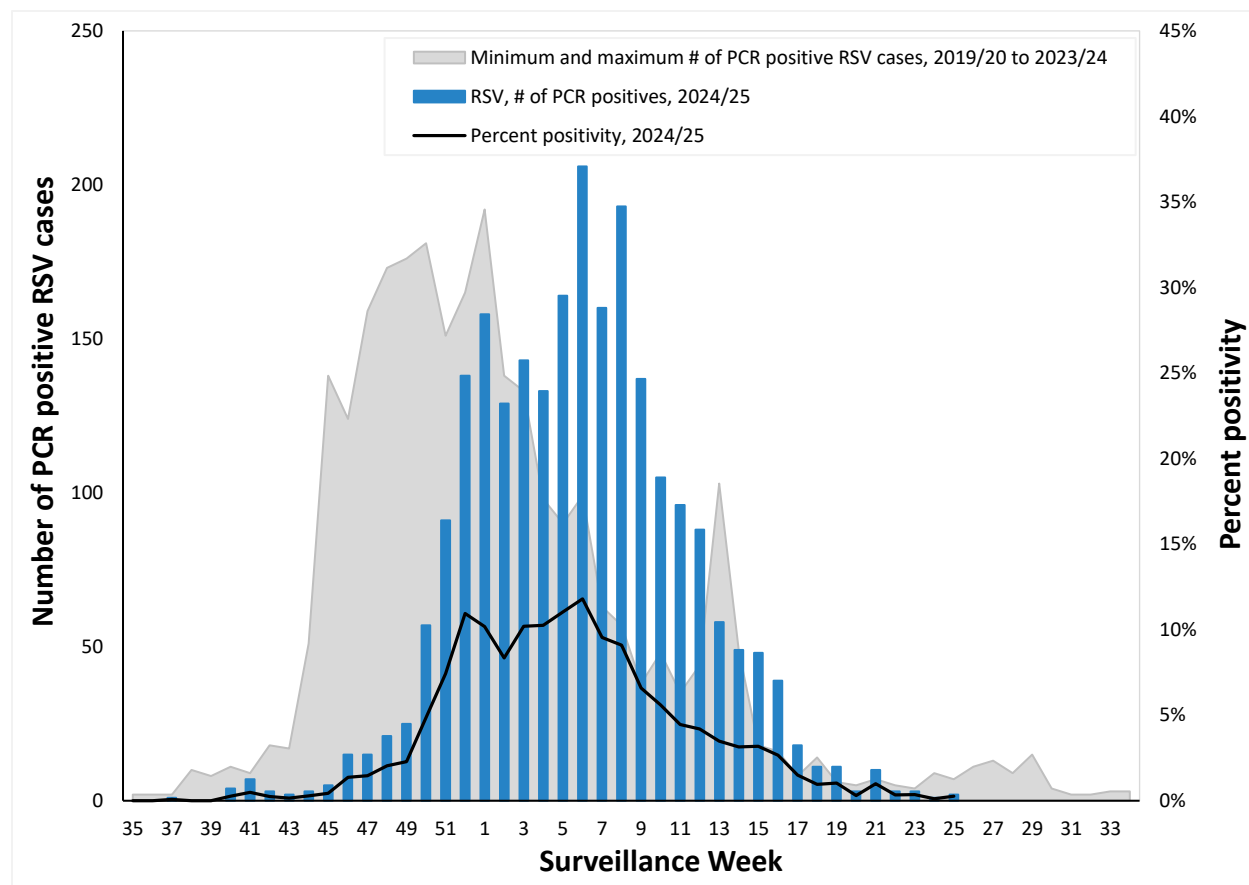
Weeks 24-25 (June 8, 2025 to June 21, 2025)

## Respiratory Syncytial Virus (RSV)<sup>17</sup>

**Table 7: Number of laboratory-confirmed RSV cases by age group, current reporting period and cumulative 2024/25 season, Nova Scotia<sup>18</sup>**

Age group	Current reporting period	Cumulative (2024/25)
0-5 months	2	241
6-11 months	0	151
12-23 months	0	248
2-4 years	0	371
5-19 years	0	166
20-64 years	0	421
≥ 65 years	1	747
<b>Nova Scotia Total</b>	<b>3</b>	<b>2345</b>

**Figure 7: Laboratory-confirmed RSV cases (N=2355) by week, 2024/25 season, compared with previous seasons, Nova Scotia<sup>19</sup>**



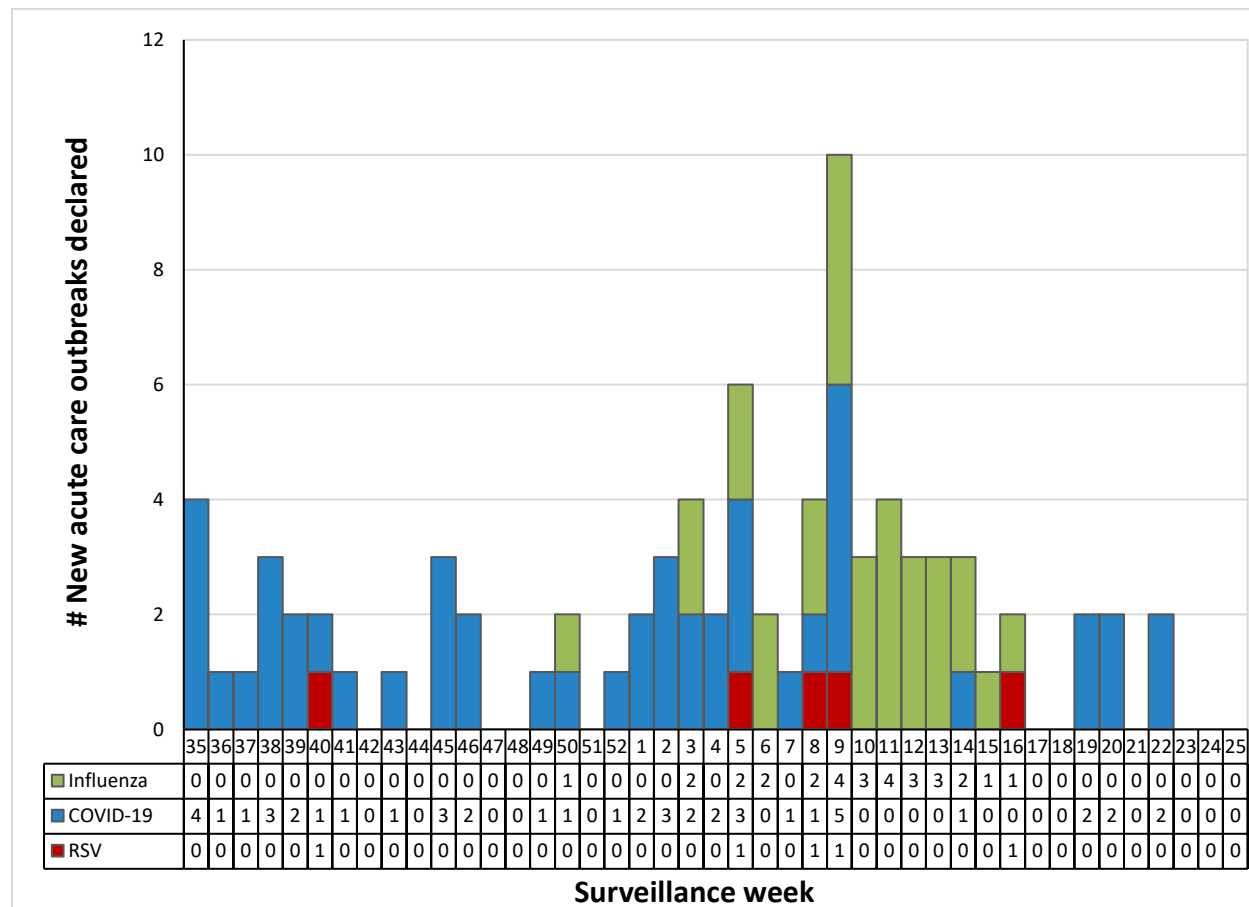
<sup>17</sup> RSV is not a notifiable condition in Nova Scotia. Counts may differ from previous surveillance weeks because of reporting delays.

<sup>18</sup> The total number of cases is less than the total count in Figure 7 because age is not reported for all cases.

<sup>19</sup> There were no reported RSV cases during the 2020-2021 season. The implementation of the multiplex respiratory virus PCR testing in 2022/23 may increase the number of cases detected.

## Respiratory Outbreaks

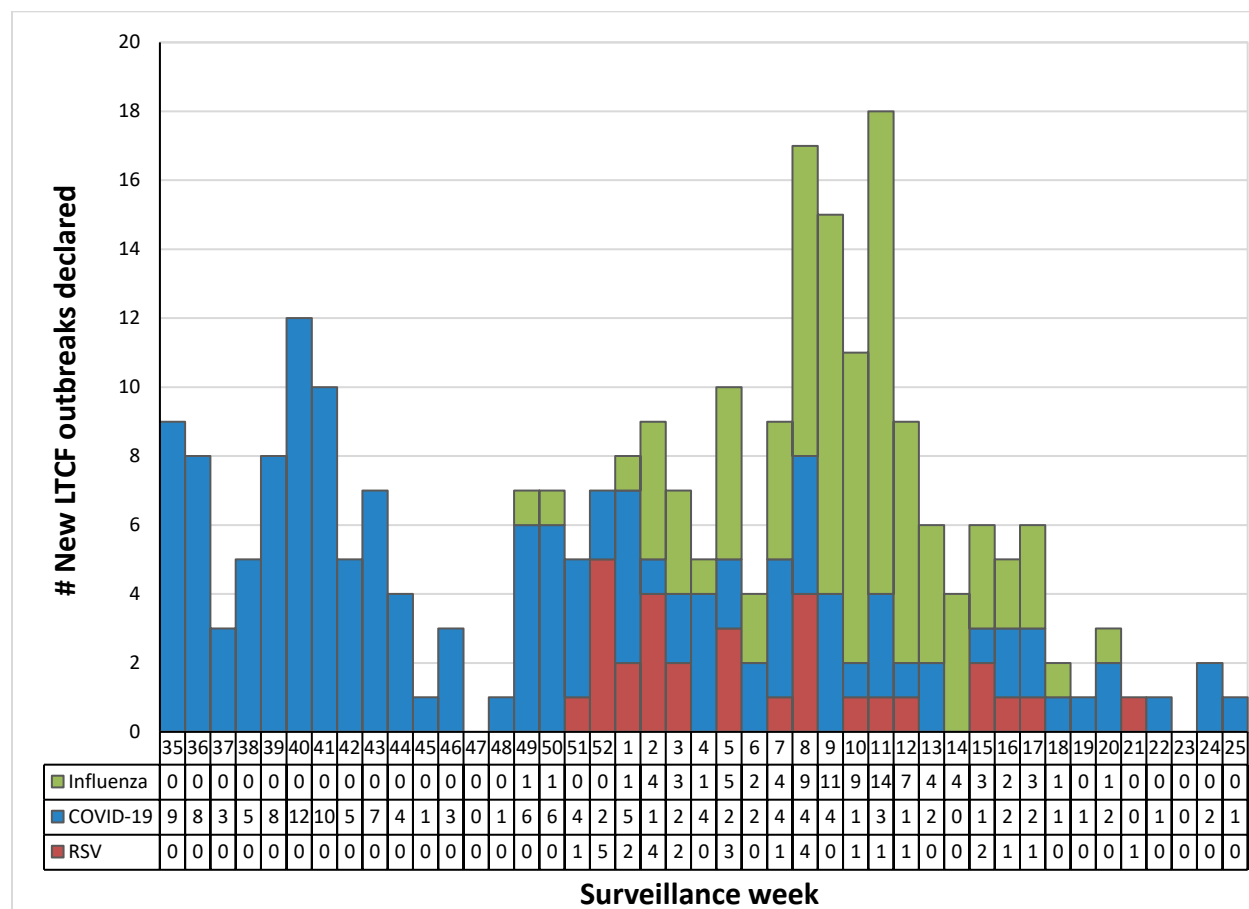
Figure 8. Number of new acute care facility respiratory outbreaks by surveillance week and respiratory virus (influenza, COVID-19 and RSV), 2024/25 season, Nova Scotia<sup>20</sup>



<sup>20</sup> Acute care facility outbreak definitions are described in the Appendix. Local public health continuously enters and updates outbreak data. Counts may differ from previous surveillance weeks.

Weeks 24-25 (June 8, 2025 to June 21, 2025)

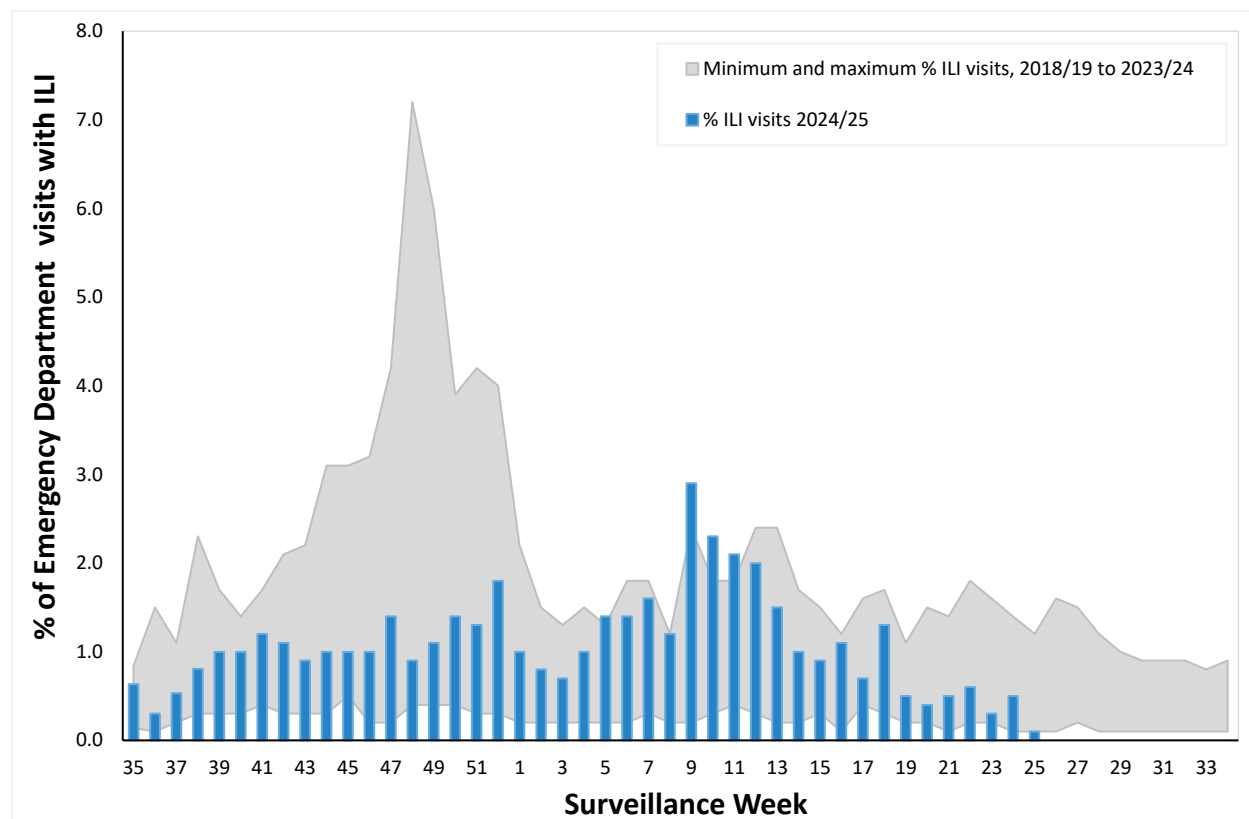
Figure 9. Number of new long-term care facility (LTCF) respiratory outbreaks by surveillance week and respiratory virus (influenza, COVID-19 and RSV), 2024/25 season, Nova Scotia<sup>21</sup>



<sup>21</sup> LTCF outbreak definitions are described in the Appendix. Local public health continuously enters and updates outbreak data. Counts may differ from previous surveillance weeks.

## Syndromic Surveillance

**Figure 10: Percentage of emergency department visits due to influenza-like illness (ILI) by surveillance week, 2024/25 season, compared with previous seasons, Nova Scotia<sup>22</sup>**



## Other Respiratory Illness

**Table 8: Number of positive specimens for other respiratory viruses, current reporting period and cumulative 2024/25 season, Nova Scotia**

PATHOGEN	Current reporting period	Cumulative (2024/25)
Adenovirus	1	40
Bocavirus	1	3
Coronavirus*	0	68
Enterovirus/Rhinovirus	17	382
Metapneumovirus	4	38
Parainfluenza	7	74

\*Excludes COVID-19

<sup>22</sup> ILI percentages may vary from previous surveillance weeks as emergency departments continuously enter and update data.

## Appendix – data notes and definitions

### Data Notes

- A surveillance week runs from Sunday to Saturday. Nova Scotia's 2024/25 season aligns with the [Public Health Agency of Canada \(PHAC\) FluWatch surveillance weeks](#).
  - This year runs from August 25, 2024 (Week 35) to August 29, 2025 (Week 34).
- Notifications of hospitalizations, ICU admissions, and deaths may lag by several weeks, and deaths are particularly affected. Additionally, data are incomplete for the most recent reporting period because of lags in local public health reporting of COVID-19 and influenza outcomes. Figures presenting outcomes by week do not include data for the most recent surveillance week.
- Definitions for hospitalizations and deaths related to each of COVID-19 and influenza were changed in August 2024. These case definitions are found in the [Surveillance guidelines](#).
- RSV is not a notifiable disease in Nova Scotia.
- Testing eligibility guidelines and the use of multiplex PCR testing affect the number of cases identified and reported.
  - A multiplex PCR tests for multiple respiratory pathogens simultaneously. Routine multiplex PCR tests include, but is not limited to, influenza, RSV, and COVID-19. See [Nova Scotia's Respiratory Surveillance Plan](#) for a full list of what is tested.
  - In the 2022-2023 season, access to multiplex PCR testing in Nova Scotia increased testing accessibility which likely increased detection in community influenza and RSV.
  - Testing is limited to [specific populations](#) and the counts reported in this report under-represent the actual number of cases in the community.

### Definitions used in respiratory surveillance, and useful links, 2024/25

See: [Nova Scotia's Respiratory Response Plan](#) and [Nova Scotia's Respiratory Surveillance Plan for Public Health](#)

### Acronyms

ICU	Intensive care unit
ILI	Influenza-like illness
RSV	Respiratory syncytial virus
PCR	Polymerase chain reaction
LTCF	Long term care facilities

### Outbreak Definitions

Pathogen	Acute care facility	Long-term care facility (LTCF)
Influenza	≥ 2 symptomatic residents where at least one is a laboratory confirmed case of influenza, epidemiologically linked within the patient care unit in a <b>7-day period</b>	≥ 2 resident cases of ILI (influenza-like illness), where at least one is a laboratory confirmed case of influenza, within the LTCF in a <b>7-day period</b>
COVID-19	≥ 2 symptomatic residents where at least one is a laboratory confirmed case of COVID-19, epidemiologically linked within the patient care unit in a <b>10-day period</b>	≥ 2 laboratory-confirmed resident cases AND at least one is a facility acquired case, with all cases epidemiologically linked within the LTCF in a <b>10-day period</b>

## Weeks 24-25 (June 8, 2025 to June 21, 2025)

Respiratory Syncytial Virus (RSV)	≥ 2 symptomatic residents where at least one is a laboratory confirmed case of RSV, epidemiologically linked within the patient care unit in a <b>7-day period</b>	≥ 2 symptomatic residents where at least one is a laboratory confirmed case of RSV, epidemiologically linked within the LTCF in a <b>7-day period</b>
-----------------------------------	--	---

### ILI Case Definition

Acute onset of respiratory illness with fever and cough and with one or more of the following – sore throat, arthralgia, myalgia or prostration which is likely due to influenza. In children under 5, gastrointestinal symptoms may also be present. In patients < 5 or ≥ 65 years, fever may not be prominent.

### Other case definitions

See: [Surveillance Guidelines](#) | [novascotia.ca](#)

### Links to other weekly influenza reports

Canada: [Weekly influenza reports - Canada.ca](#)  
World: [Global Influenza Programme \(who.int\)](#)  
US: [FluView](#) | [FluView](#) | [CDC](#)