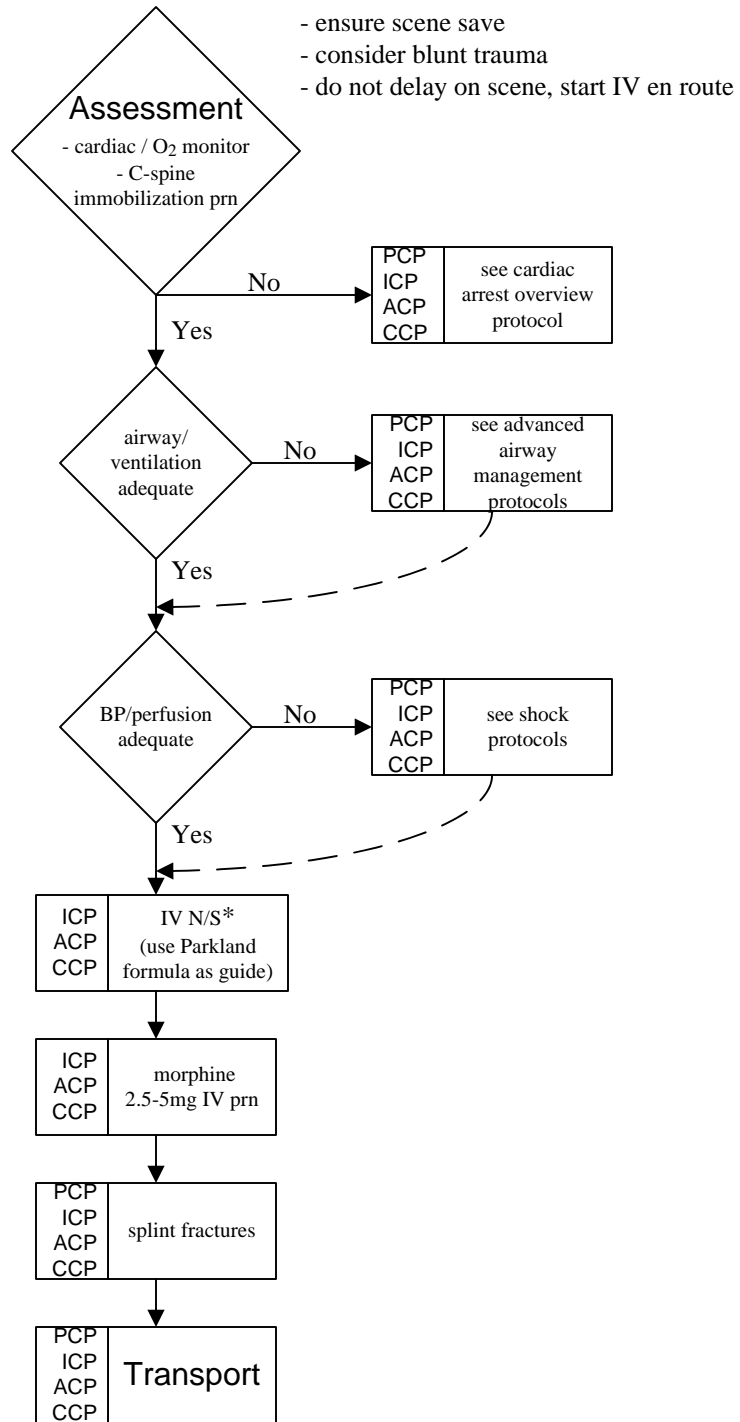


Protocol: Lightning	PDN: 6240.01	Last Updated: April 2, 2003	Subject: Environmental Emergency	Page 1
----------------------------	---------------------	------------------------------------	-----------------------------------------	--------



*Parkland Formula:
2-4cc/kg/%BSA/24hrs, administer half of the NS in the first 8 hours starting from time of incident, second half in the next 16 hours