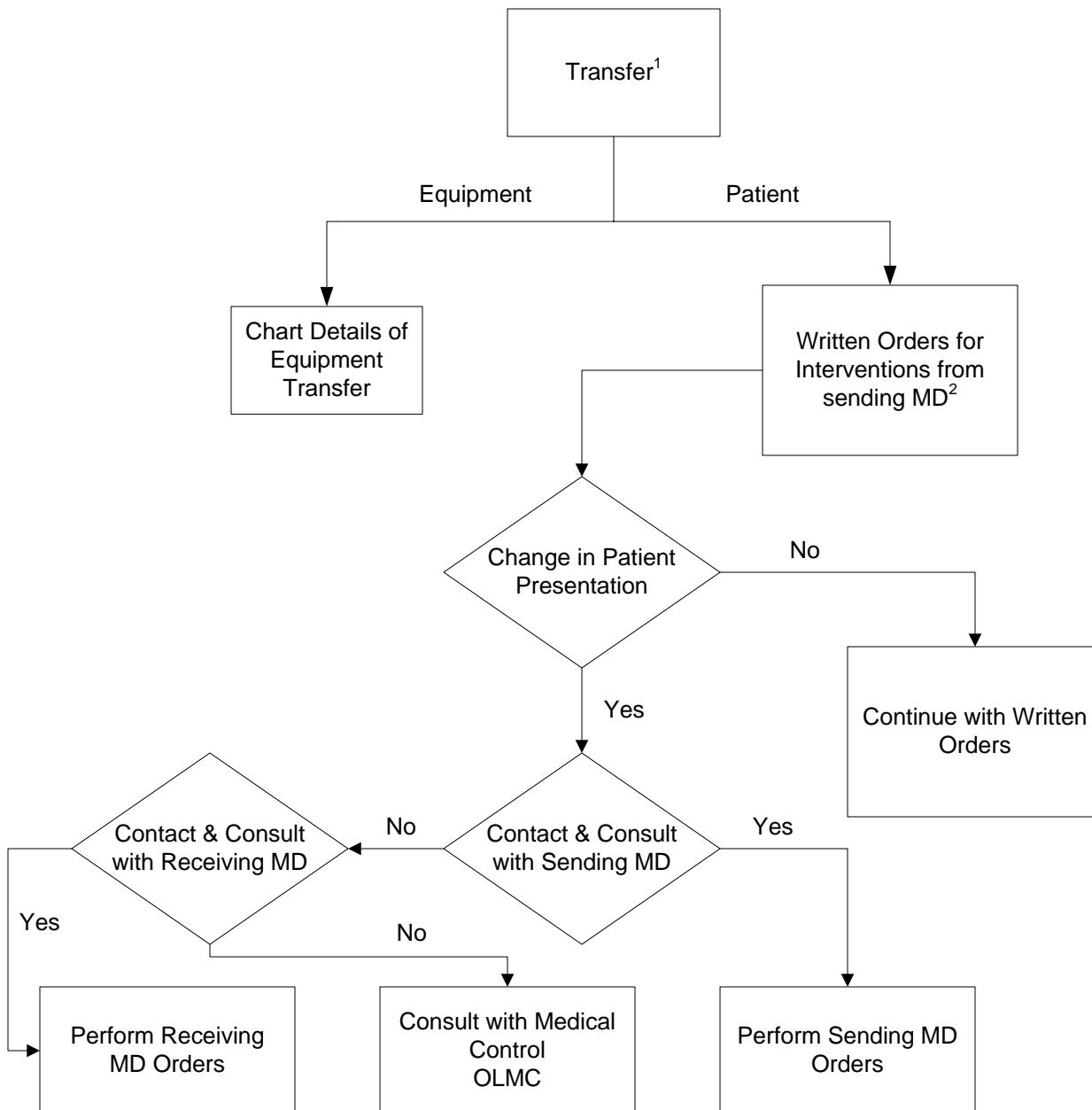


<b>Protocol:</b> Transfer	<b>PDN:</b> 6400.01	<b>Last Updated:</b> February 22, 2008	<b>Subject:</b> Transfer	Page 1
---------------------------	---------------------	--	--------------------------	--------



1. Includes transfer from nursing homes to clinics

2. Not beyond scope or EHS protocols

- Reference:
- 6104.02 – Medical Responsibilities of Paramedics
  - 6118.02 – Palliative Care Patients
  - 6121.01 – Request by a Physician for Patients to be Transported to Physician’s Office
  - 6126.01 – Inter-Health Care Facilities Transfer of Potentially Violent or Violent Patients
  - 6128.06 – Ground Transfer of Patients – Medical Responsibilities – Medical Staff Accompanying
  - 6129.06 - Ground Transfer of Patients – Medical Responsibilities – Medical Staff Not Accompanying
  - 6149.01 – Transfer of Responsibility for Care of Air Medical Transport Patients to Ground Paramedics