

Annual Accountability Report

on Emergency Departments

April 1, 2017 – March 31, 2018



Table of Contents

| | |
|---|----|
| Accountability Statement | 1 |
| Emergency Care in Nova Scotia | 2 |
| Emergency Department Closures | 3 |
| Hours of Operation and Collaborative Emergency Centres | 4 |
| ED Hours Closed/Open (by Zone, Facility and Facility Type), 2017–18 | 6 |
| Temporary ED Closure Hours & Public Consultations by Zone | 7 |
| Appendix A: Temporary ED Closures by Date and Hours Closed | 18 |

Accountability Statement

The Annual Accountability Report on Emergency Departments for the fiscal year ending March 31, 2018, is prepared pursuant to Section 6 of the Emergency Department Accountability Act (2014). This Act requires the District Health Authorities (now Nova Scotia Health Authority) and the IWK Health Centre report on all emergency department closures, hold public consultations in communities that have experienced a pattern of ongoing closures, and report on the outcomes of those consultations directly to the Minister of Health and Wellness.

Some hospitals in the province have established hours of operation that are different than 24/7. These are considered scheduled hours of closure and were established after consultation with communities.

Emergency department closures that are unpredictable and unplanned are considered temporary closures. We continue to work with the Nova Scotia Health Authority (NSHA) to reduce temporary emergency department closures. In 2017–18, 18 hospitals experienced temporary closures as a result of emergency department staff (nurses, physicians or paramedics) unavailability.

We acknowledge this accountability report is the responsibility of the Department of Health and Wellness and is, to the greatest extent possible, a complete and accurate representation of emergency department closures reported by NSHA and IWK Health Centre in Nova Scotia between April 1, 2017 and March 31, 2018.



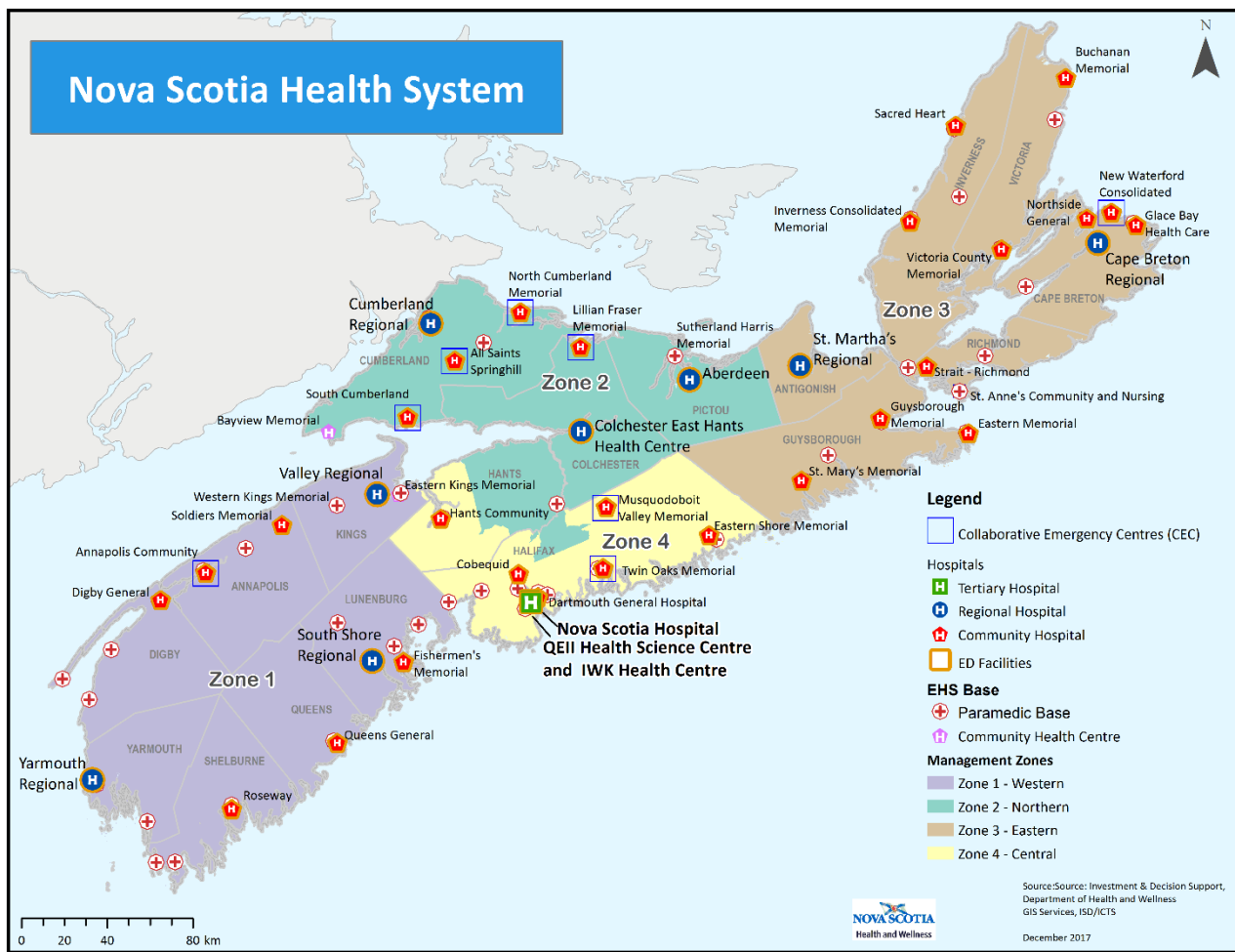
Honourable Randy Delorey
Minister of Health and Wellness

Emergency Care in Nova Scotia

Emergency departments (EDs) and their staff are an essential part of the province's health care system, quickly assessing and managing patients with unexpected illness or injury.

Most of Nova Scotia's 38 emergency departments operate on a 24/7 schedule, with the exception of five that have established different hours of operation after consultation with communities. These facilities are considered to have scheduled hours of closure. Unplanned emergency department closures are considered temporary closures. Typically, these closures are due to unavailability of emergency department staff (doctors, nurses, or paramedics). Eighteen community hospitals experienced temporary closures in 2017–18.

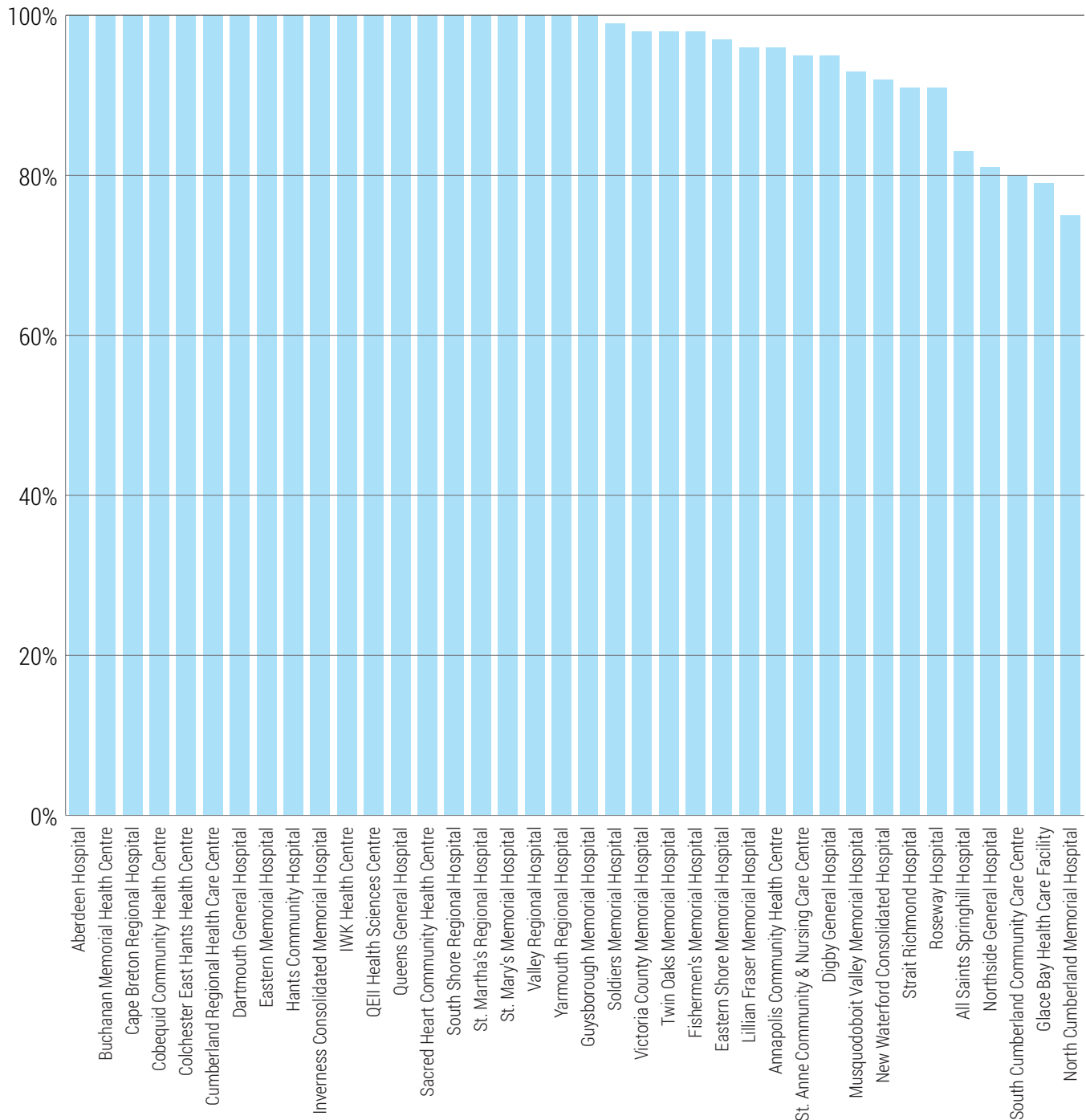
The majority of temporary closures occur in smaller, rural emergency departments. Tertiary care (IWK Health Centre and QEII Health Sciences Centre) and regional hospital emergency departments are required to be open 24 hours a day, seven days a week, 365 days a year. In community hospitals, when an ED has experienced an ongoing pattern of closures, the health authority consults with the local community to address concerns and identify a course of action. More information on consultations held in 2017–18 is included in this report.



Emergency Department Closures

Between April 1, 2017 and March 31, 2018, most (20) emergency departments in Nova Scotia were open for 100% of their scheduled hours, 87% (33) were open for at least 90% of their scheduled hours, and all 38 were open for 75% or more of their scheduled hours.

Percentage of scheduled hours open for 24/7/365 EDs, 2017–18



Hours of Operation and Collaborative Emergency Centres

Nova Scotia’s emergency care system includes two tertiary care hospitals (QEII and IWK); nine regional hospitals; 19 community hospitals with emergency departments; eight collaborative emergency centres, and a 24/7/365 emergency health services (EHS) system. In addition, the province has a telecare service (811) to provide nursing advice and help callers determine the most appropriate level of care for their needs, and a mobile mental health line to support people in crisis.

| Facility Type | Scheduled hours of operation |
|--------------------------------|------------------------------|
| QEII and IWK | 24/7 |
| Regional hospital | 24/7 |
| Community hospital | Varies by facility |
| Collaborative Emergency Centre | Varies by facility |
| 911 Emergency Health Services | 24/7 |
| 811 Nurse Telecare | 24/7 |
| Mobile crisis line | 24/7 |

Regional hospitals are required to maintain a 24/7, year-round schedule, and every effort is made to maintain a 24/7, year-round schedule for community hospitals with emergency departments. There are 312,763 scheduled open hours across 38 emergency departments in Nova Scotia annually.

CHANGES TO SCHEDULED HOURS IN 2017–18

Following the 2016–17 Annual Accountability Report on Emergency Departments, the NSHA continued to explore actions identified for the Northern Zone. Lillian Fraser Memorial Hospital Emergency Department experienced 410 temporary closure hours in 2016–17, a significant increase from 99 hours in 2015–16.

On October 2, 2017, after extensive planning, new hours of operation began at Lillian Fraser Memorial Hospital emergency department. These changes were made to provide more consistent ED services, to prevent sporadic closures, and to protect local physicians from burnout due to high patient volumes coming from outside the catchment area. Evening primary care clinics were also added to improve access for patients of the collaborative care practice requiring a same-day appointment for urgent primary care. New hours of operation for the Lillian Fraser Memorial Hospital ED can be found at [http://www.nshealth.ca/locations-details/Lillian Fraser Memorial Hospital](http://www.nshealth.ca/locations-details/Lillian_Fraser_Memorial_Hospital).

The community was informed of the change in hours of operation through a public advisory in the local newspaper, notices on local social media sites, and ongoing public education by hospital staff.

COLLABORATIVE EMERGENCY CENTRES

Collaborative Emergency Centres (CECs) provide expanded access to primary health care with same-day or next-day appointments with expanded hours and a team approach to health care. During night time hours, for most CECs, there is a collaborative care team available made up of paramedics and/or registered nurses who are supported by an Emergency Health Services (EHS) physician providing oversight via phone consultation. There are eight CECs across the province.

| Facility | Community | Scheduled hours of operation |
|--|----------------------|---|
| South Cumberland Community Care Centre | Parrsboro | 24/7 year-round |
| All Saints Springhill Hospital | Springhill | 24/7 year-round |
| Annapolis Community Health Centre | Annapolis Royal | 24/7 year-round |
| North Cumberland Memorial Hospital | Pugwash | 24/7 year-round |
| Twin Oaks Memorial Hospital | Musquodoboit Harbour | 24/7 year-round |
| Musquodoboit Valley Memorial Hospital | Middle Musquodoboit | Daily, 8:00am–8:00pm |
| New Waterford Consolidated Hospital | New Waterford | Tuesday – Saturday, 7:00am–5:00pm. The Mobile Care Team has been suspended since Summer 2017. |
| Lillian Fraser Memorial Hospital | Tatamagouche | Monday – Friday, 8:00am–4:00pm Saturday – Sunday, 8:00am–8:00pm |

ED Hours Closed/Open (by Zone, Facility and Facility Type), 2017–18

Zone hours/patient volume totals may be off by a maximum of 1 due to rounding of individual values for display.

| Zone | Facility type | Facility Name | Closure Hours 2017–18 | | | Hours Open 2017–18 | % Open ² 2017–18 |
|------|---------------|--|------------------------|-----------|----------|--------------------|-----------------------------|
| | | | Temporary ³ | Scheduled | Total | | |
| 1 | Regional | South Shore Regional Hospital | 0.0 | 0.0 | 5,041.5 | 8760.0 | 100% |
| | Regional | Yarmouth Regional Hospital | 0.0 | 0.0 | | 8760.0 | 100% |
| | Regional | Valley Regional Hospital | 0.0 | 0.0 | | 8760.0 | 100% |
| | Community | Digby General Hospital | 397.5 | 0.0 | | 8362.5 | 95% |
| | Community | Fishermen's Memorial Hospital ¹ | 132.5 | 3285.0 | | 5342.5 | 98% |
| | Community | Roseway Hospital | 789.0 | 0.0 | | 7971.0 | 91% |
| | Community | Soldiers Memorial Hospital | 52.5 | 0.0 | | 8707.0 | 99% |
| | Community | Queens General Hospital | 0.0 | 0.0 | | 8760.0 | 100% |
| | CEC | Annapolis Community Health Centre | 385.0 | 0.0 | | 8375.0 | 96% |
| 2 | Regional | Colchester East Hants Health Centre | 0.0 | | 6,402.0 | 8760.0 | 100% |
| | Regional | Cumberland Regional Health Care Centre | 0.0 | | | 8760.0 | 100% |
| | Regional | Aberdeen Hospital | 0.0 | | | 8760.0 | 100% |
| | CEC | All Saints Springhill Hospital | 1530.0 | | | 7230.0 | 83% |
| | CEC | North Cumberland Memorial Hospital | 2212.0 | | | 6548.0 | 75% |
| | CEC | South Cumberland Community Care Centre | 1784.0 | | | 6976.0 | 80% |
| | CEC | Lillian Fraser Memorial Hospital ¹ | 356.0 | | | 7884.0 | 96% |
| 3 | Regional | Cape Breton Regional Hospital | 0.0 | 0.0 | 13,979.0 | 8760.0 | 100% |
| | Regional | St. Martha's Regional Hospital | 0.0 | 0.0 | | 8760.0 | 100% |
| | Community | Eastern Memorial Hospital | 0.0 | 0.0 | | 8760.0 | 100% |
| | Community | Guysborough Memorial Hospital | 7.0 | 0.0 | | 8753.0 | 100% |
| | Community | St. Anne Community & Nursing Care Centre | 451.0 | 0.0 | | 8309.0 | 95% |
| | Community | St. Mary's Memorial Hospital | 0.0 | 0.0 | | 8760.0 | 100% |
| | Community | Strait Richmond Hospital | 828.0 | 0.0 | | 7932.0 | 91% |
| | Community | Buchanan Memorial Health Centre | 0.0 | 0.0 | | 8760.0 | 100% |
| | Community | Glace Bay Health Care Facility | 1835.0 | 0.0 | | 6925.0 | 79% |
| | Community | Inverness Consolidated Memorial Hospital | 0.0 | 0.0 | | 8760.0 | 100% |
| | Community | Victoria County Memorial Hospital | 194.0 | 0.0 | | 8566.0 | 98% |
| | Community | Northside General Hospital ¹ | 519.0 | 6087.0 | | 2154.0 | 81% |
| | Community | Sacred Heart Community Health Centre | 0.0 | 0.0 | | 8760.0 | 100% |
| | CEC | New Waterford Consolidated Hospital ¹ | 404.0 | 3654.0 | | 4702.0 | 92% |
| 4 | Tertiary | QEII Health Sciences Centre | 0.0 | 0.0 | 5,071.0 | 8760.0 | 100% |
| | Regional | Dartmouth General Hospital | 0.0 | 0.0 | | 8760.0 | 100% |
| | Community | Cobequid Community Health Centre | 0.0 | 0.0 | | 6570.0 | 100% |
| | Community | Eastern Shore Memorial Hospital | 227.0 | 0.0 | | 8533.0 | 97% |
| | Community | Hants Community Hospital | 0.0 | 0.0 | | 8760.0 | 100% |
| | CEC | Musquodoboit Valley Memorial Hospital ¹ | 298.0 | 4380.0 | | 4082.0 | 93% |
| | CEC | Twin Oaks Memorial Hospital | 166.0 | 0.0 | | 8594.0 | 98% |
| IWK | Tertiary | IWK Health Centre | 0.0 | 0.0 | 0.0 | 8760.0 | 100% |
| | | Total: | 12,567.5 | 17,926.0 | 30,493.5 | 300,196.0 | 96.0% |

¹ Does not operate as a 24/7 facility.

² The % open figures are based on advertised hours of operation.

³ Temporary change in hours of operation (e.g. summer hours) are accounted for under temporary closures.

Temporary ED Closure Hours and Public Consultations by Zone

Where an emergency department of a health authority has experienced an ongoing pattern of closure of the emergency department in the last fiscal year, the health authority shall consult with the community served by the emergency department as part of the consultations conducted in accordance with its next public engagement plan as defined by the Health Authorities Act (Emergency Department Accountability Act, 2014¹).

The following consultations were conducted based on facilities that experienced an ongoing pattern of temporary closures.

WESTERN ZONE (1)

| Facility | Hours of temporary ED closures |
|-----------------------------------|--------------------------------|
| Digby General Hospital | 397.5 hours |
| Fishermen's Memorial Hospital | 132.5 hours |
| Roseway Hospital | 789.0 hours |
| Soldiers Memorial Hospital | 52.5 hours |
| Annapolis Community Health Centre | 385.0 hours |
| Total | 1,756.5 hours |

Public Consultation: Annapolis Royal

| Date | Chair/Speakers | Attendance (approx.) |
|---|--|----------------------|
| March 28, 2018 | <ul style="list-style-type: none"> • Site Leader • Physicians • Director, Primary Health Care, Western Zone | 20 |
| <p>Summary of discussion:</p> <ul style="list-style-type: none"> • ED closure report – frequency, causes, impact assessment <ul style="list-style-type: none"> - Physician perspective - Collaborative care: EHS, nursing and Medical Online Physician • Recruitment challenges and opportunities <ul style="list-style-type: none"> - Current vacancies and impact - Bursary program - Recruitment of Nurse Practitioner • NSHA physician recruitment • Recognize contributions of ACHC Auxiliary and AWH Foundation • CEC model of care: Urgent and primary health care • Family Medicine Residency Program • Wait list and access to primary health care • Chronic disease management; Diabetes Centre | | |
| <p>Western Zone Action (specific to Emergency Departments):</p> <ul style="list-style-type: none"> • Complete recruitment and onboarding of RN and LPN to reach full complement of nursing staff. Carry supernumerary nurse above core • Establish dedicated full-time Charge Nurse position | | |

¹ Emergency Department Accountability Act, 2009, RSNS 2014, c. 32, ss. 110–114

| Date | Chair/Speakers | Attendance (approx.) |
|--|---|----------------------|
| September 26, 2017 | <ul style="list-style-type: none"> • Board of Directors, Annapolis West Health Foundation • Site Leader | 14 |
| <p>Summary of discussion:</p> <ul style="list-style-type: none"> • Nursing shortages contributed to CEC closure • LPN and RN recruitment challenges and progress toward filling 3 RN retirements was shared | | |
| <p>Western Zone Action (specific to EDs):</p> <ul style="list-style-type: none"> • Proceed with hiring and onboarding of new RN and LPN | | |
| Date | Chair/Speakers | Attendance (approx.) |
| May 26, 2017 | <ul style="list-style-type: none"> • Board of Directors, Annapolis West Health Foundation • Site Leader | 25 |
| <p>Summary of discussion:</p> <ul style="list-style-type: none"> • Unplanned CEC closures mainly due to nursing staff shortages • Contributing factors for staff shortages: long-term injury/illness, age of full-time staff members, staffing pressures in other area hospitals. Measures to alleviate these factors have been put into action. Thanks to a dedicated nursing staff willing to be flexible in scheduling, these closures were restricted to day shift which enabled the inpatients to stay at ACHC and not be transferred elsewhere. | | |
| <p>Western Zone Action (specific to Emergency Departments):</p> <ul style="list-style-type: none"> • Begin recruitment process for RNs immediately • A newly graduated RN will begin orientation and training to the CEC this summer | | |

Public Consultation: Digby

| Date | Chair/Speakers | Attendance (approx.) |
|--|---|--|
| November 15, 2017 | <ul style="list-style-type: none"> • Site Leader | Local stakeholder groups represented, 10–15 participants |
| <p>Summary of discussion: Reviewed number of ED closures and the reasons for these</p> <ul style="list-style-type: none"> • Sustainability challenges and ongoing recruitment efforts locally as well as locums • Closures over past year due to physician unavailability • Move to include Advanced Care Paramedics (ACPs) working in the Digby ED as a measure to prevent closures due to nursing unavailability. This was implemented as of June 2018 • Impact of local as well as joint closures (Annapolis CEC) on same day on EHS and on Yarmouth Regional ED when Digby as well as Shelburne EDs are closed • One primary care physician who joined collaborative team in September 2017 supporting the Digby ED one day per week • Recruitment of primary care physician for the area continues in collaboration with Zone physician recruiter and local stakeholders | | |
| <p>Western Zone Action (specific to Emergency Departments):</p> <ul style="list-style-type: none"> • Continue working collaboratively with Zone Physician Recruiter and local stakeholders in recruiting physicians with interest in emergency care as well as primary care • 3 ACPs hired in casual positions for the ED • Commit to improved communication with the community • Build recruitment strategies for physicians within NSHA aligned with local opportunities | | |

Public Consultation: Lunenburg

| Date | Chair/Speakers | Attendance (approx.) |
|--|--|--------------------------------|
| Various | <ul style="list-style-type: none"> • Executive Director, Western Zone Operations • Public Relations & Community Engagement, Western Zone | 2–30 people depending on event |
| <p>Summary of discussion:</p> <ul style="list-style-type: none"> • South Shore area hospital ED closures, FMH and SSRH were included • FMH (ED) staffing availability impacted ability to remain open for scheduled hours • Local MLAs, municipal leaders, foundations and auxiliaries were engaged in discussion on several occasions (e.g. Auxiliary AGM, MLA & Foundation joint meeting, MLA individual meetings) | | |
| <p>Western Zone Action (specific to Emergency Departments):</p> <ul style="list-style-type: none"> • Work to address the staffing challenges • Commit to continued communication with the community | | |

Public Consultation: Middleton

| Date | Chair/Speakers | Attendance (approx.) |
|--|---|---|
| Various | <ul style="list-style-type: none"> • Site Leader | Committee members of local stakeholder groups. Attendance varies. |
| <p>Summary of discussion:</p> <ul style="list-style-type: none"> • Monthly meetings with foundations, auxiliaries and community partners • Sustainability of the ED, closures due to nursing shortages. • Impact of closures on rural areas, e.g., ambulance fees to nearest open ED, recruitment challenges for health care team members • Work underway to sustain nursing and physician complement, i.e., active recruitment • Overtime cost remains significant | | |
| <p>Western Zone Action (specific to Emergency Departments): Build recruitment strategies for physicians within NSHA aligned with local opportunities. Increased access to collaborative teams in the Middleton community</p> <ul style="list-style-type: none"> • Work to address the staffing challenges in Middleton/Annapolis Valley • Core staff hired to mitigate gaps in overtime • Request for Supernumerary RN • Address safety and security in the ED Commit to continued communication with the community | | |

Public Consultation: Shelburne

| Date | Chair/Speakers | Attendance (approx.) |
|---|--|---|
| Various | <ul style="list-style-type: none"> • Site Leader | Committee members of local stakeholder groups, 2–10 at a time |
| May 29, 2017 | Municipality District of Shelburne-Economic Development: <ul style="list-style-type: none"> • Site Leader | 10 |
| July 11, 2017 | Municipal Stakeholders Meeting: <ul style="list-style-type: none"> • Interim Executive Director, Western Zone Operations, NSHA • Medical Executive Director, Western Zone • Director, Corporate Affairs and Internal Engagement • Physician Recruitment Consultant, Medical Executive Director, Western Zone • Medical Officer of Health • Public Policy & Social Action Consultant, Public Health – Healthy Communities Admin – WZ • Director, Primary Health Care, Western Zone | 20–25 |
| November 5, 2017 | Town of Shelburne Rally <ul style="list-style-type: none"> • Director, Corporate Affairs and Internal Engagement • Site Leader | 150 (including Mayor of Shelburne) |
| February 15, 2018 March 20, 2018 April 16, 2018 May 14, 2018 | Meeting with Rural NS Health Crisis Working Group: <ul style="list-style-type: none"> • Mayor of Shelburne • NS Health Coalition | On average 20 per session |

Summary of discussion:

- Representatives from NSHA, DHW, Minister of Health and Wellness, Department of Transportation and Infrastructure Renewal have participated in various public meetings that were called to discuss Roseway Hospital emergency department closures as well as primary care physician recruitment challenges. Presentations included emergency room data (visits) and NSHA's vision for community based primary health care. Recruitment challenges and opportunities for stakeholders to support initiatives were discussed.
- The discussion included:
 - Emergency department (ED) physician staffing-locums
 - Impact of closures on rural areas, e.g., ambulance fees to nearest open ED
 - Addition of new local family physicians who have also taken on inpatient coverage
 - Status of Shelburne collaborative health centre construction
 - Status of provincial physician recruitment strategies and resource planning

Western Zone Action (specific to Emergency Departments):

- Work to address the challenges in Shelburne
- Significantly reduce closures and work toward sustainable access to emergency services in Shelburne County
- Some actions taken as a result of the community consultation include:
 - Additional registered nurses (RNs) hired to allow flexibility in staff scheduling. RNs are cross-trained in acute medicine and ED.
 - Continue to take advantage of provincial, zone, and local approaches to service planning and delivery to find options for sharing human resources from other hospitals
 - Build recruitment strategies for physicians within NSHA aligned with local opportunities
 - Improve timeliness of physician schedule generation and sharing
 - Commit to improved communication with the community. Newsletters continue to be circulated to stakeholders
 - Site leader and other program leads attend, upon request, council meetings to respond to Q&As and present on topics of interest

NORTHERN ZONE (2)

| Facility | Hours of temporary ED closures |
|--|--------------------------------|
| All Saints Springhill Hospital | 1,530.0 hours |
| North Cumberland Memorial Hospital | 2,212.0 hours |
| South Cumberland Community Care Centre | 1784.0 hours |
| Lillian Fraser Memorial Hospital | 356.0 hours |
| Total | 5,882 hours |

Public Consultation: Pugwash

| Date | Chair/Speakers | Attendance (approx.) |
|--|---|----------------------|
| Various | <ul style="list-style-type: none"> • Site Leader | 5–20 |
| Summary of discussion: <ul style="list-style-type: none"> • Ongoing discussion of emergency and primary health care services as part of the redevelopment committee work | | |
| Northern Zone Action (specific to Emergency Departments): <ul style="list-style-type: none"> • Ongoing participation with functional planning | | |

Public Consultation: Pugwash

| Date | Chair/Speakers | Attendance (approx.) |
|---|--|----------------------|
| March 25, 2018 | <ul style="list-style-type: none"> • Medical Executive Director, Northern Zone • Executive Director, Northern Zone Operations • Physician Lead, Primary Health Care Northern Zone • Director, Primary Health Care, Northern Zone • Sr. Director, Emergency Program of Care, NSHA • Site Leader • Communications Director, Change Initiatives, Northern Zone | 50 |
| Summary of discussion: <ul style="list-style-type: none"> • Presentations with questions on the following topics: <ul style="list-style-type: none"> - Pugwash redevelopment and timelines - Physician recruitment - Primary health care planning - Emergency closures and night time model of a CEC • Discussion from local nursing and physicians during question periods | | |
| Northern Zone Action (specific to Emergency Departments): <ul style="list-style-type: none"> • Structure an education campaign on the CEC model, including 811, mobile crisis line, and nighttime (after hours) support for community healthcare needs | | |

EASTERN ZONE (3)

| Facility | Hours of temporary ED closures |
|--|--------------------------------|
| Guysborough Memorial Hospital | 7.0 hours |
| St. Anne Community & Nursing Care Centre | 451.0 hours |
| Strait Richmond Hospital | 828.0 hours |
| Glace Bay Health Care Facility | 1,835.0 hours |
| Victoria County Memorial Hospital | 194.0 hours |
| Northside General Hospital | 519.0 hours |
| New Waterford Consolidated Hospital | 404.0 hours |
| Total | 4,238.0 hours |

Public Consultation: Arichat

| Date | Chair/Speakers | Attendance (approx.) |
|--|--|--|
| November 2, 2017 | Chair/Speakers <ul style="list-style-type: none"> • Director, Integrated Health for Rural Sites, Eastern Zone • Manager, Health Services, Strait Richmond Hospital • Director, Issue Management-Stakeholder Relations, NSHA | 6 (Richmond County Council and a community representative) |
| <p>Summary of discussion:</p> <ul style="list-style-type: none"> • Committee members expressed numerous concerns and questions similar to what has been heard from the general public, patients, staff/physicians, and advocates. Key concerns include: <ul style="list-style-type: none"> - access to a family doctor - physicians coverage at Strait Richmond Hospital and St. Anne Centre (Arichat) EDs - physicians (and other professionals) recruitment and retention • A general awareness exists about the collaborative practice initiative and potential for other health services planning in the longer term; wants to a concrete plan and more immediate action • Good understanding of various nursing roles, and sees a role for a community outreach worker (social work or mental health and addictions) • Some concerns expressed about the Collaborative Care model and related requirements or agreements physicians must meet to access enhanced support from other health professionals • A concern was expressed about the 'community cluster' identified by PHC for the area which 'includes Richmond Co., specifically around the boundaries identified for the 'cluster' | | |
| <p>Eastern Zone Action (specific to Emergency Departments):</p> <ul style="list-style-type: none"> • Build recruitment strategies for physicians within NSHA aligned with local opportunities • Establish a link with the Richmond County Health Professional recruitment and retention committee • Commit to continued communication with the community | | |

Public Consultation: Buchanan Memorial

| Date | Chair/Speakers | Attendance (approx.) |
|---|---|--|
| May 11, 2017 | <ul style="list-style-type: none"> Executive Director, Eastern Zone Operations Senior Director, Acute Medicine Services | 24 (staff, physicians, foundation) and Community Health Board |
| Summary of discussion: <ul style="list-style-type: none"> Physician staffing concerns | | |
| Eastern Zone Action (specific to Emergency Departments): <ul style="list-style-type: none"> Discuss specific strategies for NSHA in assisting with rural recruitment (e.g. spousal employment) | | |
| Date | Chair/Speakers | Attendance (approx.) |
| April 24, 2017 | <ul style="list-style-type: none"> Medical Executive Director, Eastern Zone Executive Director, Eastern Zone Operations | 11 (staff, foundation, auxiliary) and community health board; physicians not available |
| Summary of discussion: <ul style="list-style-type: none"> Physician and nurse staffing and recruitment | | |
| Eastern Zone Action (specific to Emergency Departments): <ul style="list-style-type: none"> Nursing staff recruited Individual meetings with Medical Executive Director through the year on this issue | | |

Public Consultation: Glace Bay

| Date | Chair/Speakers | Attendance (approx.) |
|---|---|-----------------------|
| May 19, 2017 | <ul style="list-style-type: none"> Executive Director, Eastern Zone Operations | 20 (staff/foundation) |
| Summary of discussion: <ul style="list-style-type: none"> No issues pertaining to ED identified at this meeting | | |
| Eastern Zone Action (specific to Emergency Departments): <ul style="list-style-type: none"> N/A | | |

Public Consultation: Guysborough

| Date | Chair/Speakers | Attendance (approx.) |
|--|--|--|
| November 20, 2017 January 2, 2018 January 16, 2018 | <ul style="list-style-type: none"> Executive Director, Eastern Zone Operations Medical Executive Director, Eastern Zone Director, Integrated Health for Rural Sites, Eastern Zone Health Services Manager, Guysborough Memorial Hospital | 6–10 (Foundation) |
| Summary of discussion: <ul style="list-style-type: none"> ED physician coverage and scheduling ED recruitment | | |
| Eastern Zone Action (specific to Emergency Departments): <ul style="list-style-type: none"> Remain focused on rural physician recruitment Continue to work with local community for recruitment initiatives | | |
| Date | Chair/Speakers | Attendance (approx.) |
| April 24, 2017 | <ul style="list-style-type: none"> Medical Executive Director, Eastern Zone Executive Director, Eastern Zone Operations | 18 (staff, physicians, foundation, Community Health Board) |
| Summary of discussion: <ul style="list-style-type: none"> Concerns about physician recruitment | | |
| Eastern Zone Action (specific to Emergency Departments): <ul style="list-style-type: none"> Establish as a priority site for physician recruitment services Executive Director, Medicine to relay resource planning via email to Foundation Chair | | |

Public Consultation: Inverness

| Date | Chair/Speakers | Attendance (approx.) |
|---|---|---|
| July 5, 2017 | <ul style="list-style-type: none"> Executive Director, Eastern Zone Operations | 20 + walkabout (staff and Foundation / Auxiliary / CHB) |
| Summary of discussion: <ul style="list-style-type: none"> Nurse staffing and recruitment; recruitment focus for rural sites with new grads in Spring 2017 was unsuccessful | | |
| Eastern Zone Action (specific to Emergency Departments): <ul style="list-style-type: none"> Addition of Nurse Educator for rural sites Initiation of Rural Recruitment committee | | |

Public Consultation: New Waterford

| Date | Chair/Speakers | Attendance (approx.) |
|--|---|---|
| May 26, 2017 | <ul style="list-style-type: none"> Executive Director, Eastern Zone Operations | 15 (physicians, staff, auxiliary) and walkabout |
| Summary of discussion: <ul style="list-style-type: none"> Concept of Community Health Centers Staffing (nurse) resources for summer months | | |
| Eastern Zone Action (specific to Emergency Departments): <ul style="list-style-type: none"> Ongoing discussions on Community Health Centers Summer suspension of Mobile Care Team continued into March 2018 | | |

Public Consultation: Northside General Hospital

| Date | Chair/Speakers | Attendance (approx.) |
|--|---|--|
| January 16, 2018 | <ul style="list-style-type: none"> Director, Emergency Services, Eastern Zone Board of Directors, Northside/Harbourview Hospital Foundation | 16 (Foundation Chair/ Board Executive and members) |
| June 29, 2017 | <ul style="list-style-type: none"> Medical Executive Director, Eastern Zone Executive Director, Eastern Zone Operations | 20 (hospital staff and foundation) |
| Summary of discussion: <ul style="list-style-type: none"> Newly implemented ED closure process at Northside General ED ED Closures and their impact on other services at the Northside General Nursing resources increased from last year; continue to recruit | | |
| Eastern Zone Action (specific to Emergency Departments): <ul style="list-style-type: none"> Explore processes from other sites to support new process within NSGH Establish a plan with provincial and zone leads Nursing recruitment remains a priority | | |

Public Consultation: Sacred Heart Hospital

| Date | Chair/Speakers | Attendance (approx.) |
|---|--|----------------------------------|
| May 29, 2017 | Sacred Heart Hospital Staff and Foundation | 10 (staff walkabout, Foundation) |
| Summary of discussion: <ul style="list-style-type: none"> Laboratory and laboratory resources issues | | |
| Eastern Zone Action (specific to Emergency Departments): <ul style="list-style-type: none"> Developed an Interprofessional practice committee to implement Point of Care Testing (POCT) Develop bridging plan to augment lab services from other sites until full implementation of POCT | | |

Public Consultation: Strait Richmond

| Date | Chair/Speakers | Attendance (approx.) |
|--|---|--|
| April 13, 2017 | <ul style="list-style-type: none"> • Medical Executive Director, Eastern Zone • Executive Director, Eastern Zone Operations | 20 (physicians, foundation, auxiliary, staff, Community Health Board) plus walkabout |
| Summary of discussion: <ul style="list-style-type: none"> • Concerns about immediate physician coverage for ED | | |
| Eastern Zone Action (specific to Emergency Departments): <ul style="list-style-type: none"> • Medical Executive Director recruited physicians from other sites to help with this issue – completed | | |

Public Consultation: St. Mary's Memorial Hospital

| Date | Chair/Speakers | Attendance (approx.) |
|--|---|---|
| April 12, 2017 | <ul style="list-style-type: none"> • Medical Executive Director, Eastern Zone • Executive Director, Eastern Zone Operations | 10 (walkabout meeting with Site Chief and Foundation Chair) |
| Summary of discussion: <ul style="list-style-type: none"> • Locum replacement program | | |
| Eastern Zone Action (specific to Emergency Departments): <ul style="list-style-type: none"> • Site Chief and Medical Executive Director to discuss locum replacement program • Foundation chair has addressed clinical equipment needs that have been brought forward this year | | |

Public Consultation: Victoria County Memorial Hospital

| Date | Chair/Speakers | Attendance (approx.) |
|---|---|---|
| June 14, 2017 | <ul style="list-style-type: none"> • Medical Executive Director, Eastern Zone • Executive Director, Eastern Zone Operations | 12 (Physicians, staff, foundation) and Community Health Board |
| Summary of discussion: <ul style="list-style-type: none"> • Pending retirement of physician and workload impact, nursing coverage | | |
| Eastern Zone Action (specific to Emergency Departments): <ul style="list-style-type: none"> • Additional meetings in Fall 2017 on physician workload impact with Executive Medical Director and Emergency Program of Care Leads provincially • Rural Recruitment committee initiated with People Services, focus rural nursing recruitment and retention | | |
| Date | Chair/Speakers | Attendance (approx.) |
| November 6, 2017 | <ul style="list-style-type: none"> • Executive Director, Eastern Zone Operations • Medical Executive Director, Eastern Zone | 9 |
| Summary of discussion: <ul style="list-style-type: none"> • Physician recruitment | | |
| Eastern Zone Action (specific to Emergency Departments): <ul style="list-style-type: none"> • Build recruitment strategies for physicians within NSHA aligned with local opportunities | | |

CENTRAL ZONE (4)

| Facility | Hours of temporary ED closures |
|---------------------------------------|---------------------------------------|
| Eastern Shore Memorial Hospital | 227.0 hours |
| Musquodoboit Valley Memorial Hospital | 298.0 hours |
| Twin Oaks Memorial Hospital | 166.0 hours |
| Total | 691.0 hours |

Eastern Shore Memorial Hospital, Musquodoboit Valley Memorial Hospital and Twin Oaks Memorial Hospital experienced isolated closures in 2017–18. Closure hours in Central Zone were not considered an ‘ongoing pattern of ED closures’ as defined by the Health Authorities Act, and did not require public consultations. For example, instances of closure hours in Musquodoboit Valley were intentional in order to balance in physician scheduling between primary and emergency care, while Eastern Shore Memorial Hospital experienced eight closures in May and July due to an unexpected decrease in physician resources. Public concerns related to ED access could be raised and addressed through annual general meetings and as needed throughout the year through site leadership.

Appendix A: Temporary ED closures by date and hours closed

Reporting period: April 1, 2017 – March 31, 2018

ZONE 1

| Annapolis Community Health Centre | | |
|-----------------------------------|------------|--------------|
| Month | Date | Hours closed |
| April | 4/1/2017 | 15.0 |
| | 4/2/2017 | 15.0 |
| | 4/3/2017 | 6.5 |
| | 4/6/2017 | 8.0 |
| | 4/7/2017 | 15.5 |
| | 4/20/2017 | 8.5 |
| | 4/26/2017 | 15.0 |
| | 4/28/2017 | 15.0 |
| May | 5/5/2017 | 15.0 |
| June | 6/2/2017 | 8.5 |
| | 6/11/2017 | 15.0 |
| | 6/12/2017 | 15.0 |
| | 6/22/2017 | 15.0 |
| July | 7/25/2017 | 6.0 |
| August | 8/6/2017 | 7.5 |
| | 8/21/2017 | 7.5 |
| | 8/31/2017 | 9.5 |
| September | 9/1/2017 | 16.0 |
| | 9/12/2017 | 7.0 |
| | 9/16/2017 | 10.0 |
| | 9/17/2017 | 9.0 |
| | 9/27/2017 | 7.0 |
| | 9/29/2017 | 9.0 |
| October | 10/7/2017 | 15.0 |
| | 10/11/2017 | 15.0 |
| | 10/13/2017 | 6.5 |
| | 10/14/2017 | 8.0 |
| | 10/24/2017 | 9.0 |
| | 10/27/2017 | 15.0 |
| | 10/30/2017 | 6.5 |
| | December | 12/8/2017 |

| Month | Date | Hours closed |
|----------|-----------|--------------|
| January | 1/3/2018 | 6.0 |
| | 1/11/2018 | 8.5 |
| | 1/27/2018 | 15.0 |
| | 1/28/2018 | 8.5 |
| February | 2/2/2018 | 8.0 |
| Total | | 385.0 |

| Digby General Hospital | | |
|------------------------|------------|--------------|
| Month | Date | Hours closed |
| May | 5/8/2017 | 14.0 |
| | 5/22/2017 | 14.0 |
| | 5/29/2017 | 14.0 |
| June | 6/7/2017 | 26.0 |
| July | 7/19/2017 | 26.0 |
| August | 8/5/2017 | 15.0 |
| | 8/9/2017 | 11.0 |
| | 8/11/2017 | 14.0 |
| | 8/14/2017 | 14.0 |
| September | 9/29/2017 | 14.0 |
| December | 12/23/2017 | 22.0 |
| January | 1/1/2018 | 14.0 |
| | 1/5/2018 | 16.0 |
| February | 2/3/2018 | 14.0 |
| | 2/4/2018 | 14.0 |
| | 2/5/2018 | 14.0 |
| | 2/13/2018 | 26.0 |
| | 2/15/2018 | 14.0 |
| | 2/16/2018 | 14.0 |
| | 2/19/2018 | 14.0 |
| | 2/20/2018 | 14.0 |
| | 2/24/2018 | 16.0 |
| March | 3/3/2018 | 5.5 |
| | 3/23/2018 | 38.0 |
| Total | | 397.5 |

| Fishermen's Memorial Hospital | | |
|-------------------------------|------------|--------------|
| Month | Date | Hours closed |
| April | 4/1/2017 | 8.0 |
| June | 6/30/2017 | 5.5 |
| July | 7/2/2017 | 5.5 |
| | 7/20/2017 | 5.5 |
| | 7/25/2017 | 5.5 |
| August | 8/6/2017 | 5.5 |
| | 8/11/2017 | 9.0 |
| | 8/13/2017 | 8.0 |
| September | 9/15/2017 | 6.5 |
| | 9/16/2017 | 6.5 |
| | 9/19/2017 | 7.5 |
| | 9/22/2017 | 8.5 |
| | 9/23/2017 | 8.5 |
| October | 10/6/2017 | 8.5 |
| | 10/9/2017 | 8.5 |
| | 10/22/2017 | 8.0 |
| | 10/23/2017 | 5.5 |
| January | 1/13/2018 | 6.5 |
| March | 3/26/2018 | 5.5 |
| Total | | 132.5 |

| Roseway Hospital | | |
|------------------|-----------|--------------|
| Month | Date | Hours closed |
| April | 4/1/2017 | 8.0 |
| May | 5/26/2017 | 11.0 |
| June | 6/17/2017 | 14.0 |
| | 6/28/2017 | 14.0 |
| | 6/29/2017 | 42.0 |
| July | 7/1/2017 | 8.0 |
| | 7/13/2017 | 26.0 |
| | 7/19/2017 | 10.0 |
| August | 8/7/2017 | 14.0 |
| | 8/18/2017 | 14.0 |
| | 8/20/2017 | 13.0 |
| | 8/23/2017 | 14.0 |
| | 8/25/2017 | 26.0 |
| September | 9/1/2017 | 14.0 |
| | 9/15/2017 | 14.0 |
| | 9/22/2017 | 8.0 |
| | 9/30/2017 | 4.0 |

| Month | Date | Hours closed |
|-----------|------------|--------------|
| October | 10/1/2017 | 22.0 |
| | 10/6/2017 | 26.0 |
| | 10/7/2017 | 14.0 |
| | 10/8/2017 | 26.0 |
| | 10/14/2017 | 18.0 |
| | 10/15/2017 | 32.0 |
| | 10/21/2017 | 14.0 |
| | 10/27/2017 | 26.0 |
| November | 11/4/2017 | 14.0 |
| December | 12/7/2017 | 26.0 |
| | 12/22/2017 | 15.0 |
| | 12/23/2017 | 48.0 |
| | 12/25/2017 | 15.0 |
| | 12/26/2017 | 15.0 |
| | 12/27/2017 | 15.0 |
| January | 1/1/2018 | 26.0 |
| | 1/4/2018 | 14.0 |
| | 1/7/2018 | 14.0 |
| February | 2/2/2018 | 26.0 |
| | 2/4/2018 | 14.0 |
| | 2/17/2018 | 26.0 |
| | 2/24/2018 | 14.0 |
| | March | 3/3/2018 |
| 3/19/2018 | | 14.0 |
| 3/30/2018 | | 26.0 |
| 3/31/2018 | | 6.0 |
| Total | | 789.0 |

| Soldiers' Memorial Hospital | | |
|-----------------------------|-----------|--------------|
| Month | Date | Hours closed |
| June | 6/24/2017 | 13.5 |
| July | 7/2/2017 | 14.0 |
| September | 9/24/2017 | 15.0 |
| March | 3/13/2018 | 10.0 |
| Total | | 52.5 |

ZONE 2

| All Saints Springhill Hospital | | |
|--------------------------------|-----------|--------------|
| Month | Date | Hours closed |
| April | 4/4/2017 | 12.0 |
| | 4/6/2017 | 12.0 |
| | 4/7/2017 | 12.0 |
| | 4/12/2017 | 12.0 |
| | 4/16/2017 | 12.0 |
| | 4/22/2017 | 12.0 |
| | 4/23/2017 | 12.0 |
| | 4/28/2017 | 12.0 |
| May | 5/4/2017 | 12.0 |
| | 5/5/2017 | 12.0 |
| | 5/9/2017 | 12.0 |
| | 5/13/2017 | 12.0 |
| | 5/14/2017 | 12.0 |
| | 5/18/2017 | 12.0 |
| | 5/19/2017 | 12.0 |
| | 5/22/2017 | 12.0 |
| | 5/23/2017 | 12.0 |
| | 5/24/2017 | 12.0 |
| | 5/28/2017 | 12.0 |
| June | 6/2/2017 | 12.0 |
| | 6/3/2017 | 12.0 |
| | 6/4/2017 | 12.0 |
| | 6/7/2017 | 12.0 |
| | 6/8/2017 | 12.0 |
| | 6/9/2017 | 12.0 |
| | 6/13/2017 | 12.0 |
| | 6/15/2017 | 12.0 |
| | 6/17/2017 | 12.0 |
| | 6/18/2017 | 12.0 |
| | 6/19/2017 | 12.0 |
| | 6/23/2017 | 12.0 |
| | 6/27/2017 | 12.0 |
| | 6/28/2017 | 12.0 |
| July | 7/4/2017 | 12.0 |
| | 7/5/2017 | 12.0 |
| | 7/6/2017 | 12.0 |
| | 7/9/2017 | 12.0 |
| | 7/10/2017 | 12.0 |
| | 7/13/2017 | 12.0 |
| | 7/22/2017 | 12.0 |
| | 7/23/2017 | 12.0 |
| | 7/31/2017 | 12.0 |

| Month | Date | Hours closed |
|------------|------------|--------------|
| August | 8/3/2017 | 12.0 |
| | 8/11/2017 | 12.0 |
| | 8/15/2017 | 12.0 |
| | 8/21/2017 | 12.0 |
| | 8/22/2017 | 12.0 |
| | 8/29/2017 | 12.0 |
| | 8/31/2017 | 12.0 |
| | September | 9/1/2017 |
| 9/5/2017 | | 12.0 |
| 9/11/2017 | | 12.0 |
| 9/15/2017 | | 12.0 |
| 9/17/2017 | | 12.0 |
| 9/20/2017 | | 12.0 |
| 9/23/2017 | | 12.0 |
| 9/25/2017 | | 12.0 |
| 9/27/2017 | | 12.0 |
| October | 10/6/2017 | 12.0 |
| | 10/9/2017 | 12.0 |
| | 10/10/2017 | 12.0 |
| | 10/11/2017 | 12.0 |
| | 10/14/2017 | 12.0 |
| | 10/17/2017 | 12.0 |
| | 10/18/2017 | 12.0 |
| | 10/21/2017 | 12.0 |
| | 10/22/2017 | 12.0 |
| | 10/24/2017 | 12.0 |
| | 10/26/2017 | 12.0 |
| 10/27/2017 | 12.0 | |
| November | 11/1/2017 | 12.0 |
| | 11/4/2017 | 12.0 |
| | 11/5/2017 | 13.0 |
| | 11/10/2017 | 13.0 |
| | 11/12/2017 | 12.0 |
| | 11/17/2017 | 13.0 |
| | 11/20/2017 | 12.0 |
| | 11/27/2017 | 13.0 |

| Month | Date | Hours closed | |
|-----------|------------|--------------|------|
| December | 12/1/2017 | 12.0 | |
| | 12/6/2017 | 12.0 | |
| | 12/9/2017 | 12.0 | |
| | 12/10/2017 | 12.0 | |
| | 12/12/2017 | 12.0 | |
| | 12/15/2017 | 12.0 | |
| | 12/16/2017 | 12.0 | |
| | 12/17/2017 | 12.0 | |
| | 12/25/2017 | 13.0 | |
| | 12/29/2017 | 12.0 | |
| January | 1/2/2018 | 12.0 | |
| | 1/4/2018 | 12.0 | |
| | 1/5/2018 | 12.0 | |
| | 1/9/2018 | 12.0 | |
| | 1/10/2018 | 12.0 | |
| | 1/11/2018 | 12.0 | |
| | 1/15/2018 | 12.0 | |
| | 1/16/2018 | 12.0 | |
| | 1/19/2018 | 12.0 | |
| | 1/23/2018 | 12.0 | |
| | 1/25/2018 | 12.0 | |
| | 1/26/2018 | 12.0 | |
| | February | 2/1/2018 | 12.0 |
| | | 2/2/2018 | 12.0 |
| 2/3/2018 | | 12.0 | |
| 2/8/2018 | | 12.0 | |
| 2/13/2018 | | 12.0 | |
| 2/20/2018 | | 12.0 | |
| 2/22/2018 | | 12.0 | |
| 2/25/2018 | | 12.0 | |
| March | 3/2/2018 | 12.0 | |
| | 3/3/2018 | 12.0 | |
| | 3/4/2018 | 12.0 | |
| | 3/6/2018 | 12.0 | |
| | 3/7/2018 | 12.0 | |
| | 3/8/2018 | 12.0 | |
| | 3/12/2018 | 12.0 | |
| | 3/15/2018 | 12.0 | |
| | 3/17/2018 | 12.0 | |
| | 3/18/2018 | 12.0 | |
| | 3/20/2018 | 12.0 | |
| | 3/21/2018 | 12.0 | |
| | 3/26/2018 | 13.0 | |
| | 3/27/2018 | 12.0 | |
| 3/30/2018 | 12.0 | | |
| 3/31/2018 | 12.0 | | |
| Total | | 1,530.0 | |

| North Cumberland Memorial Hospital | | |
|------------------------------------|-----------|--------------|
| Month | Date | Hours closed |
| April | 4/5/2017 | 5.0 |
| | 4/24/2017 | 12.0 |
| | 4/26/2017 | 4.0 |
| May | 5/3/2017 | 12.0 |
| | 5/17/2017 | 12.0 |
| June | 6/14/2017 | 12.0 |
| | 6/16/2017 | 12.0 |
| | 6/21/2017 | 12.0 |
| | 6/23/2017 | 12.0 |
| July | 7/2/2017 | 3.0 |
| | 7/4/2017 | 12.0 |
| | 7/6/2017 | 12.0 |
| | 7/7/2017 | 12.0 |
| | 7/8/2017 | 12.0 |
| | 7/9/2017 | 12.0 |
| | 7/10/2017 | 12.0 |
| | 7/12/2017 | 12.0 |
| | 7/13/2017 | 12.0 |
| | 7/14/2017 | 12.0 |
| | 7/15/2017 | 12.0 |
| | 7/16/2017 | 12.0 |
| | 7/17/2017 | 12.0 |
| | 7/21/2017 | 12.0 |
| 7/22/2017 | 12.0 | |
| 7/23/2017 | 12.0 | |
| 7/25/2017 | 12.0 | |
| 7/26/2017 | 12.0 | |
| 7/28/2017 | 12.0 | |
| 7/31/2017 | 12.0 | |

| Month | Date | Hours closed |
|-----------|-----------|--------------|
| August | 8/1/2017 | 12.0 |
| | 8/2/2017 | 12.0 |
| | 8/4/2017 | 12.0 |
| | 8/5/2017 | 12.0 |
| | 8/6/2017 | 12.0 |
| | 8/7/2017 | 12.0 |
| | 8/8/2017 | 12.0 |
| | 8/9/2017 | 12.0 |
| | 8/10/2017 | 12.0 |
| | 8/11/2017 | 12.0 |
| | 8/12/2017 | 12.0 |
| | 8/13/2017 | 12.0 |
| | 8/14/2017 | 12.0 |
| | 8/15/2017 | 12.0 |
| | 8/16/2017 | 4.0 |
| | 8/19/2017 | 4.0 |
| | 8/20/2017 | 12.0 |
| | 8/21/2017 | 12.0 |
| | 8/23/2017 | 12.0 |
| | 8/25/2017 | 12.0 |
| | 8/28/2017 | 12.0 |
| | 8/29/2017 | 12.0 |
| | 8/30/2017 | 12.0 |
| | September | 9/1/2017 |
| 9/2/2017 | | 12.0 |
| 9/3/2017 | | 12.0 |
| 9/8/2017 | | 12.0 |
| 9/9/2017 | | 12.0 |
| 9/10/2017 | | 12.0 |
| 9/15/2017 | | 12.0 |
| 9/16/2017 | | 12.0 |
| 9/17/2017 | | 12.0 |
| 9/22/2017 | | 12.0 |
| 9/25/2017 | | 12.0 |
| 9/28/2017 | | 12.0 |
| 9/29/2017 | | 12.0 |
| 9/30/2017 | 12.0 | |

| Month | Date | Hours closed |
|------------|------------|--------------|
| October | 10/1/2017 | 12.0 |
| | 10/2/2017 | 12.0 |
| | 10/3/2017 | 12.0 |
| | 10/4/2017 | 12.0 |
| | 10/5/2017 | 12.0 |
| | 10/6/2017 | 12.0 |
| | 10/7/2017 | 12.0 |
| | 10/8/2017 | 12.0 |
| | 10/9/2017 | 12.0 |
| | 10/10/2017 | 12.0 |
| | 10/11/2017 | 12.0 |
| | 10/13/2017 | 12.0 |
| | 10/14/2017 | 12.0 |
| | 10/15/2017 | 12.0 |
| | 10/16/2017 | 12.0 |
| | 10/17/2017 | 12.0 |
| | 10/18/2017 | 12.0 |
| | 10/20/2017 | 12.0 |
| | 10/23/2017 | 12.0 |
| | 10/24/2017 | 12.0 |
| | 10/25/2017 | 12.0 |
| 10/26/2017 | 12.0 | |
| 10/30/2017 | 12.0 | |
| 10/31/2017 | 12.0 | |

| Month | Date | Hours closed |
|----------|------------|--------------|
| November | 11/1/2017 | 12.0 |
| | 11/3/2017 | 12.0 |
| | 11/4/2017 | 12.0 |
| | 11/5/2017 | 12.0 |
| | 11/6/2017 | 12.0 |
| | 11/7/2017 | 12.0 |
| | 11/8/2017 | 4.0 |
| | 11/10/2017 | 12.0 |
| | 11/11/2017 | 12.0 |
| | 11/12/2017 | 12.0 |
| | 11/13/2017 | 12.0 |
| | 11/14/2017 | 4.0 |
| | 11/15/2017 | 12.0 |
| | 11/17/2017 | 12.0 |
| | 11/18/2017 | 12.0 |
| | 11/19/2017 | 12.0 |
| | 11/20/2017 | 12.0 |
| | 11/21/2017 | 12.0 |
| | 11/22/2017 | 4.0 |
| | 11/23/2017 | 4.0 |
| | 11/24/2017 | 12.0 |
| | 11/27/2017 | 12.0 |
| | 11/28/2017 | 12.0 |
| | 11/29/2017 | 4.0 |
| | 11/30/2017 | 4.0 |

| Month | Date | Hours closed |
|----------|------------|--------------|
| December | 12/1/2017 | 12.0 |
| | 12/2/2017 | 12.0 |
| | 12/3/2017 | 12.0 |
| | 12/4/2017 | 12.0 |
| | 12/5/2017 | 12.0 |
| | 12/6/2017 | 4.0 |
| | 12/8/2017 | 12.0 |
| | 12/9/2017 | 12.0 |
| | 12/10/2017 | 12.0 |
| | 12/11/2017 | 12.0 |
| | 12/12/2017 | 12.0 |
| | 12/13/2017 | 4.0 |
| | 12/15/2017 | 12.0 |
| | 12/18/2017 | 12.0 |
| | 12/19/2017 | 12.0 |
| | 12/20/2017 | 4.0 |
| | 12/22/2017 | 12.0 |
| | 12/23/2017 | 12.0 |
| | 12/24/2017 | 12.0 |
| | 12/25/2017 | 12.0 |
| | 12/26/2017 | 12.0 |
| | 12/27/2017 | 12.0 |
| | 12/29/2017 | 12.0 |
| | 12/30/2017 | 12.0 |
| | 12/31/2017 | 12.0 |

| Month | Date | Hours closed |
|-----------|-----------|--------------|
| January | 1/1/2018 | 12.0 |
| | 1/2/2018 | 12.0 |
| | 1/3/2018 | 12.0 |
| | 1/4/2018 | 12.0 |
| | 1/5/2018 | 12.0 |
| | 1/6/2018 | 12.0 |
| | 1/7/2018 | 12.0 |
| | 1/8/2018 | 12.0 |
| | 1/9/2018 | 12.0 |
| | 1/10/2018 | 4.0 |
| | 1/12/2018 | 12.0 |
| | 1/16/2018 | 12.0 |
| | 1/17/2018 | 4.0 |
| | 1/19/2018 | 12.0 |
| | 1/20/2018 | 12.0 |
| | 1/21/2018 | 12.0 |
| | 1/22/2018 | 12.0 |
| | 1/23/2018 | 12.0 |
| | 1/24/2018 | 4.0 |
| | 1/26/2018 | 12.0 |
| | 1/27/2018 | 12.0 |
| 1/30/2018 | 12.0 | |
| 1/31/2018 | 4.0 | |
| February | 2/2/2018 | 12.0 |
| | 2/5/2018 | 12.0 |
| | 2/6/2018 | 12.0 |
| | 2/7/2018 | 4.0 |
| | 2/9/2018 | 12.0 |
| | 2/12/2018 | 12.0 |
| | 2/13/2018 | 12.0 |
| | 2/14/2018 | 4.0 |
| | 2/16/2018 | 12.0 |
| | 2/19/2018 | 12.0 |
| | 2/20/2018 | 12.0 |
| | 2/21/2018 | 12.0 |
| | 2/23/2018 | 12.0 |
| | 2/24/2018 | 12.0 |
| 2/27/2018 | 12.0 | |
| 2/28/2018 | 4.0 | |

| Month | Date | Hours closed |
|-----------|-----------|--------------|
| March | 3/2/2018 | 12.0 |
| | 3/4/2018 | 12.0 |
| | 3/5/2018 | 12.0 |
| | 3/6/2018 | 12.0 |
| | 3/7/2018 | 4.0 |
| | 3/8/2018 | 12.0 |
| | 3/9/2018 | 12.0 |
| | 3/10/2018 | 12.0 |
| | 3/11/2018 | 12.0 |
| | 3/12/2018 | 12.0 |
| | 3/13/2018 | 12.0 |
| | 3/14/2018 | 4.0 |
| | 3/16/2018 | 12.0 |
| | 3/17/2018 | 12.0 |
| | 3/18/2018 | 12.0 |
| | 3/19/2018 | 12.0 |
| | 3/21/2018 | 4.0 |
| | 3/23/2018 | 12.0 |
| | 3/24/2018 | 12.0 |
| | 3/27/2018 | 12.0 |
| 3/28/2018 | 4.0 | |
| 3/31/2018 | 12.0 | |
| Total | | 2,212.0 |

| South Cumberland Community Care Centre | | |
|--|-----------|--------------|
| Month | Date | Hours closed |
| April | 4/1/2017 | 12.0 |
| | 4/11/2017 | 12.0 |
| | 4/12/2017 | 12.0 |
| | 4/13/2017 | 12.0 |
| | 4/15/2017 | 12.0 |
| | 4/16/2017 | 12.0 |
| | 4/24/2017 | 12.0 |
| | 4/26/2017 | 12.0 |
| | 4/27/2017 | 12.0 |
| | 4/28/2017 | 12.0 |

| Month | Date | Hours closed |
|--------|-----------|--------------|
| May | 5/5/2017 | 12.0 |
| | 5/6/2017 | 12.0 |
| | 5/9/2017 | 12.0 |
| | 5/10/2017 | 12.0 |
| | 5/11/2017 | 12.0 |
| | 5/13/2017 | 12.0 |
| | 5/14/2017 | 12.0 |
| | 5/16/2017 | 12.0 |
| | 5/20/2017 | 12.0 |
| | 5/21/2017 | 12.0 |
| June | 6/3/2017 | 12.0 |
| | 6/4/2017 | 12.0 |
| | 6/9/2017 | 12.0 |
| | 6/17/2017 | 12.0 |
| | 6/19/2017 | 12.0 |
| July | 7/1/2017 | 12.0 |
| | 7/4/2017 | 12.0 |
| | 7/5/2017 | 12.0 |
| | 7/6/2017 | 12.0 |
| | 7/7/2017 | 12.0 |
| | 7/8/2017 | 12.0 |
| | 7/9/2017 | 12.0 |
| | 7/12/2017 | 12.0 |
| | 7/13/2017 | 12.0 |
| | 7/14/2017 | 12.0 |
| | 7/15/2017 | 12.0 |
| | 7/16/2017 | 12.0 |
| | 7/21/2017 | 12.0 |
| | 7/22/2017 | 12.0 |
| | 7/27/2017 | 12.0 |
| | 7/29/2017 | 12.0 |
| | 7/30/2017 | 12.0 |
| August | 8/4/2017 | 12.0 |
| | 8/5/2017 | 12.0 |
| | 8/8/2017 | 12.0 |
| | 8/9/2017 | 12.0 |
| | 8/10/2017 | 12.0 |
| | 8/11/2017 | 12.0 |
| | 8/12/2017 | 12.0 |
| | 8/15/2017 | 12.0 |
| | 8/16/2017 | 12.0 |
| | 8/17/2017 | 12.0 |
| | 8/19/2017 | 12.0 |
| | 8/20/2017 | 12.0 |
| | 8/26/2017 | 12.0 |
| | 8/30/2017 | 12.0 |

| Month | Date | Hours closed |
|------------|------------|--------------|
| September | 9/1/2017 | 12.0 |
| | 9/2/2017 | 12.0 |
| | 9/3/2017 | 12.0 |
| | 9/5/2017 | 12.0 |
| | 9/6/2017 | 12.0 |
| | 9/7/2017 | 12.0 |
| | 9/12/2017 | 12.0 |
| | 9/13/2017 | 12.0 |
| | 9/16/2017 | 12.0 |
| | 9/17/2017 | 12.0 |
| | 9/24/2017 | 12.0 |
| | 9/26/2017 | 12.0 |
| | 9/27/2017 | 12.0 |
| 9/30/2017 | 12.0 | |
| October | 10/1/2017 | 12.0 |
| | 10/3/2017 | 12.0 |
| | 10/4/2017 | 12.0 |
| | 10/5/2017 | 12.0 |
| | 10/6/2017 | 4.5 |
| | 10/8/2017 | 12.0 |
| | 10/10/2017 | 12.0 |
| | 10/11/2017 | 12.0 |
| | 10/14/2017 | 12.0 |
| | 10/15/2017 | 12.0 |
| | 10/16/2017 | 12.0 |
| 10/20/2017 | 12.0 | |
| 10/27/2017 | 12.0 | |
| 10/29/2017 | 12.0 | |
| November | 11/5/2017 | 12.0 |
| | 11/9/2017 | 12.0 |
| | 11/14/2017 | 12.0 |
| | 11/15/2017 | 12.0 |
| | 11/17/2017 | 12.0 |
| | 11/18/2017 | 12.0 |
| | 11/19/2017 | 12.0 |
| | 11/24/2017 | 12.0 |
| 11/25/2017 | 12.0 | |
| 11/27/2017 | 12.0 | |
| 11/28/2017 | 12.0 | |
| 11/29/2017 | 12.0 | |

| Month | Date | Hours closed |
|-----------|------------|--------------|
| December | 12/3/2017 | 12.0 |
| | 12/5/2017 | 12.0 |
| | 12/6/2017 | 12.0 |
| | 12/9/2017 | 12.0 |
| | 12/10/2017 | 12.0 |
| | 12/12/2017 | 12.0 |
| | 12/13/2017 | 12.0 |
| | 12/14/2017 | 12.0 |
| | 12/17/2017 | 12.0 |
| | 12/24/2017 | 12.0 |
| | 12/26/2017 | 12.0 |
| | 12/27/2017 | 12.0 |
| | January | 1/3/2018 |
| 1/7/2018 | | 12.0 |
| 1/9/2018 | | 12.0 |
| 1/10/2018 | | 12.0 |
| 1/11/2018 | | 12.0 |
| 1/14/2018 | | 12.0 |
| February | 2/4/2018 | 12.0 |
| | 2/5/2018 | 12.0 |
| | 2/6/2018 | 12.0 |
| | 2/7/2018 | 12.0 |
| | 2/8/2018 | 12.0 |
| | 2/11/2018 | 12.0 |
| | 2/12/2018 | 12.0 |
| | 2/20/2018 | 12.0 |
| | 2/21/2018 | 12.0 |
| | 2/25/2018 | 12.0 |
| 2/26/2018 | 12.0 | |

| Month | Date | Hours closed |
|-----------|-----------|--------------|
| March | 3/3/2018 | 12.0 |
| | 3/4/2018 | 12.0 |
| | 3/5/2018 | 12.0 |
| | 3/6/2018 | 12.0 |
| | 3/7/2018 | 12.0 |
| | 3/8/2018 | 12.0 |
| | 3/12/2018 | 12.0 |
| | 3/17/2018 | 12.0 |
| | 3/18/2018 | 12.0 |
| | 3/19/2018 | 12.0 |
| | 3/20/2018 | 12.0 |
| | 3/21/2018 | 12.0 |
| | 3/22/2018 | 12.0 |
| | 3/25/2018 | 12.0 |
| | 3/26/2018 | 12.0 |
| | 3/27/2018 | 12.0 |
| | 3/28/2018 | 12.0 |
| 3/31/2018 | 12.0 | |
| Total | | 1,784.0 |

| Lillian Fraser Memorial Hospital | | |
|----------------------------------|-----------|--------------|
| Month | Date | Hours closed |
| April | 4/28/2017 | 12.0 |
| May | 5/1/2017 | 12.0 |
| | 5/30/2017 | 12.0 |
| June | 6/1/2017 | 12.0 |
| | 6/2/2017 | 12.0 |
| | 6/8/2017 | 12.0 |
| | 6/16/2017 | 12.0 |
| | 6/27/2017 | 12.0 |
| | 6/28/2017 | 2.0 |
| | 6/30/2017 | 12.0 |
| July | 7/7/2017 | 12.0 |
| | 7/8/2017 | 12.0 |
| | 7/14/2017 | 6.0 |
| | 7/21/2017 | 12.0 |
| | 7/22/2017 | 12.0 |
| | 7/23/2017 | 12.0 |
| | 7/28/2017 | 6.0 |

| Month | Date | Hours closed |
|-----------|------------|--------------|
| August | 8/4/2017 | 6.0 |
| | 8/10/2017 | 12.0 |
| | 8/11/2017 | 6.0 |
| | 8/18/2017 | 12.0 |
| | 8/25/2017 | 12.0 |
| | 8/26/2017 | 12.0 |
| | 8/27/2017 | 12.0 |
| | 8/31/2017 | 12.0 |
| September | 9/7/2017 | 12.0 |
| | 9/8/2017 | 6.0 |
| | 9/15/2017 | 12.0 |
| November | 11/11/2017 | 12.0 |
| | 11/12/2017 | 12.0 |
| January | 1/17/2018 | 8.0 |
| March | 3/13/2018 | 8.0 |
| | 3/29/2018 | 8.0 |
| | 3/31/2018 | 12.0 |
| Total | | 356.0 |

ZONE 3

| Glance Bay Health Care Facility | | |
|---------------------------------|-----------|--------------|
| Month | Date | Hours closed |
| April | 4/1/2017 | 13.0 |
| | 4/2/2017 | 16.0 |
| | 4/9/2017 | 16.0 |
| | 4/13/2017 | 16.0 |
| | 4/16/2017 | 13.0 |
| | 4/25/2017 | 16.0 |
| | 4/29/2017 | 16.0 |
| | May | 5/1/2017 |
| 5/4/2017 | | 16.0 |
| 5/11/2017 | | 40.0 |
| 5/14/2017 | | 25.0 |
| 5/21/2017 | | 16.0 |
| 5/24/2017 | | 25.0 |
| 5/27/2017 | | 13.0 |

| Month | Date | Hours closed |
|------------|-----------|--------------|
| July | 7/2/2017 | 25.0 |
| | 7/15/2017 | 16.0 |
| | 7/16/2017 | 16.0 |
| | 7/21/2017 | 16.0 |
| | 7/22/2017 | 16.0 |
| | 7/25/2017 | 16.0 |
| | 7/27/2017 | 16.0 |
| | August | 8/1/2017 |
| 8/2/2017 | | 40.0 |
| 8/4/2017 | | 48.0 |
| 8/6/2017 | | 16.0 |
| 8/7/2017 | | 16.0 |
| 8/8/2017 | | 16.0 |
| 8/10/2017 | | 25.0 |
| 8/13/2017 | | 16.0 |
| 8/19/2017 | | 16.0 |
| 8/20/2017 | | 24.0 |
| 8/21/2017 | | 24.0 |
| 8/22/2017 | | 24.0 |
| 8/23/2017 | | 24.0 |
| 8/24/2017 | | 24.0 |
| 8/25/2017 | | 24.0 |
| 8/26/2017 | | 24.0 |
| 8/27/2017 | | 16.0 |
| September | 9/2/2017 | 24.0 |
| | 9/3/2017 | 25.0 |
| | 9/4/2017 | 16.0 |
| | 9/15/2017 | 16.0 |
| | 9/28/2017 | 16.0 |
| | October | 10/2/2017 |
| 10/3/2017 | | 25.0 |
| 10/7/2017 | | 40.0 |
| 10/15/2017 | | 16.0 |
| 10/16/2017 | | 16.0 |
| 10/20/2017 | | 40.0 |
| 10/22/2017 | | 16.0 |
| 10/27/2017 | | 24.0 |
| 10/28/2017 | | 25.0 |

| Month | Date | Hours closed |
|----------|------------|--------------|
| November | 11/12/2017 | 16.0 |
| | 11/13/2017 | 16.0 |
| | 11/18/2017 | 16.0 |
| | 11/19/2017 | 16.0 |
| | 11/20/2017 | 16.0 |
| | 11/25/2017 | 28.0 |
| December | 12/1/2017 | 16.0 |
| | 12/2/2017 | 12.0 |
| | 12/8/2017 | 16.0 |
| | 12/10/2017 | 13.0 |
| | 12/23/2017 | 48.0 |
| | 12/25/2017 | 25.0 |
| | 12/28/2017 | 16.0 |
| | 12/31/2017 | 9.0 |
| January | 1/1/2018 | 7.0 |
| | 1/1/2018 | 16.0 |
| | 1/8/2018 | 16.0 |
| | 1/14/2018 | 16.0 |
| | 1/20/2018 | 16.0 |
| | 1/21/2018 | 16.0 |
| February | 2/3/2018 | 25.0 |
| | 2/10/2018 | 16.0 |
| | 2/16/2018 | 40.0 |
| | 2/19/2018 | 16.0 |
| March | 3/3/2018 | 16.0 |
| | 3/4/2018 | 16.0 |
| | 3/10/2018 | 48.0 |
| | 3/12/2018 | 16.0 |
| | 3/13/2018 | 16.0 |
| | 3/14/2018 | 16.0 |
| | 3/18/2018 | 25.0 |
| | 3/20/2018 | 16.0 |
| | 3/23/2018 | 16.0 |
| | 3/24/2018 | 24.0 |
| | 3/25/2018 | 24.0 |
| Total | | 1,835.0 |

| Northside General Hospital | | |
|----------------------------|-----------|--------------|
| Month | Date | Hours closed |
| April | 4/1/2017 | 7.0 |
| | 4/2/2017 | 7.0 |
| | 4/8/2017 | 7.0 |
| | 4/15/2017 | 7.0 |
| | 4/22/2017 | 7.0 |
| | 4/23/2017 | 7.0 |
| May | 5/5/2017 | 7.0 |
| | 5/7/2017 | 7.0 |
| | 5/12/2017 | 7.0 |
| June | 6/3/2017 | 7.0 |
| July | 7/1/2017 | 7.0 |
| | 7/2/2017 | 7.0 |
| | 7/8/2017 | 7.0 |
| | 7/9/2017 | 7.0 |
| | 7/14/2017 | 7.0 |
| | 7/15/2017 | 7.0 |
| | 7/16/2017 | 7.0 |
| | 7/17/2017 | 7.0 |
| | 7/21/2017 | 7.0 |
| | 7/22/2017 | 7.0 |
| | 7/23/2017 | 7.0 |
| | 7/24/2017 | 7.0 |
| | 7/25/2017 | 7.0 |
| | 7/26/2017 | 7.0 |
| | 7/27/2017 | 7.0 |
| 7/28/2017 | 7.0 | |
| 7/29/2017 | 7.0 | |
| 7/30/2017 | 7.0 | |
| 7/31/2017 | 7.0 | |

| Month | Date | Hours closed |
|-----------|------------|--------------|
| August | 8/1/2017 | 7.0 |
| | 8/4/2017 | 7.0 |
| | 8/5/2017 | 7.0 |
| | 8/6/2017 | 7.0 |
| | 8/7/2017 | 7.0 |
| | 8/18/2017 | 7.0 |
| | 8/19/2017 | 7.0 |
| | 8/20/2017 | 7.0 |
| | 8/22/2017 | 7.0 |
| 8/27/2017 | 7.0 | |
| September | 9/1/2017 | 7.0 |
| | 9/2/2017 | 7.0 |
| | 9/3/2017 | 7.0 |
| | 9/5/2017 | 7.0 |
| | 9/10/2017 | 7.0 |
| | 9/16/2017 | 7.0 |
| | 9/24/2017 | 7.0 |
| | 9/30/2017 | 7.0 |
| October | 10/1/2017 | 7.0 |
| | 10/7/2017 | 7.0 |
| | 10/8/2017 | 7.0 |
| | 10/9/2017 | 7.0 |
| | 10/14/2017 | 7.0 |
| | 10/15/2017 | 7.0 |
| | 10/20/2017 | 7.0 |
| | 10/27/2017 | 7.0 |
| | 10/28/2017 | 7.0 |
| | 10/29/2017 | 7.0 |
| December | 12/24/2017 | 8.0 |
| | 12/25/2017 | 8.0 |
| January | 1/1/2018 | 8.0 |
| | 1/20/2018 | 8.0 |
| February | 2/18/2018 | 8.0 |
| | 2/20/2018 | 8.0 |

| Month | Date | Hours closed |
|-------|-----------|--------------|
| March | 3/10/2018 | 8.0 |
| | 3/11/2018 | 8.0 |
| | 3/12/2018 | 8.0 |
| | 3/14/2018 | 8.0 |
| | 3/16/2018 | 8.0 |
| | 3/17/2018 | 8.0 |
| | 3/24/2018 | 8.0 |
| | 3/25/2018 | 8.0 |
| | 3/31/2018 | 8.0 |
| Total | | 519.0 |

| St. Anne Centre | | |
|-----------------|------------|--------------|
| Month | Date | Hours closed |
| April | 4/3/2017 | 5.0 |
| | 4/4/2017 | 7.0 |
| | 4/28/2017 | 15.0 |
| | 4/29/2017 | 24.0 |
| | 4/30/2017 | 24.0 |
| May | 5/1/2017 | 24.0 |
| | 5/2/2017 | 24.0 |
| | 5/3/2017 | 24.0 |
| | 5/4/2017 | 7.0 |
| | 5/5/2017 | 12.0 |
| | 5/6/2017 | 12.0 |
| July | 7/2/2017 | 12.0 |
| | 7/9/2017 | 7.0 |
| | 7/16/2017 | 7.0 |
| | 7/23/2017 | 7.0 |
| | 7/30/2017 | 12.0 |
| August | 8/6/2017 | 12.0 |
| | 8/13/2017 | 12.0 |
| | 8/20/2017 | 12.0 |
| | 8/27/2017 | 12.0 |
| September | 9/2/2017 | 12.0 |
| November | 11/3/2017 | 12.0 |
| | 11/28/2017 | 48.0 |

| Month | Date | Hours closed |
|----------|------------|--------------|
| December | 12/21/2017 | 17.0 |
| | 12/25/2017 | 31.0 |
| | 12/31/2017 | 12.0 |
| January | 1/1/2018 | 5.0 |
| | 1/11/2018 | 7.0 |
| Total | | 451.0 |

| New Waterford Consolidated Hospital | | |
|-------------------------------------|-----------|--------------|
| Month | Date | Hours closed |
| April | 4/5/2017 | 10.0 |
| | 4/7/2017 | 10.0 |
| May | 5/3/2017 | 10.0 |
| | 5/5/2017 | 10.0 |
| | 5/12/2017 | 10.0 |
| | 5/13/2017 | 10.0 |
| | 5/16/2017 | 10.0 |
| | 5/19/2017 | 10.0 |
| | 5/27/2017 | 10.0 |
| June | 6/2/2017 | 10.0 |
| | 6/3/2017 | 10.0 |
| | 6/10/2017 | 10.0 |
| July | 7/7/2017 | 10.0 |
| | 7/11/2017 | 10.0 |
| | 7/28/2017 | 7.0 |
| | 7/29/2017 | 7.0 |
| August | 8/2/2017 | 10.0 |
| | 8/9/2017 | 10.0 |
| | 8/11/2017 | 10.0 |
| | 8/22/2017 | 10.0 |
| | 8/25/2017 | 10.0 |
| | 8/26/2017 | 10.0 |
| | 8/31/2017 | 10.0 |
| September | 9/8/2017 | 10.0 |
| | 9/19/2017 | 10.0 |
| | 9/22/2017 | 10.0 |
| | 9/30/2017 | 10.0 |

| Month | Date | Hours closed |
|----------|------------|--------------|
| October | 10/4/2017 | 10.0 |
| | 10/19/2017 | 10.0 |
| November | 11/17/2017 | 10.0 |
| December | 12/1/2017 | 10.0 |
| | 12/2/2017 | 10.0 |
| | 12/9/2017 | 10.0 |
| | 12/27/2017 | 10.0 |
| | 12/29/2017 | 10.0 |
| January | 1/20/2018 | 10.0 |
| February | 2/3/2018 | 10.0 |
| | 2/17/2018 | 10.0 |
| March | 3/9/2018 | 10.0 |
| | 3/17/2018 | 10.0 |
| | 3/24/2018 | 10.0 |
| Total | | 404.0 |

| Victoria County Memorial Hospital | | |
|-----------------------------------|------------|--------------|
| Month | Date | Hours closed |
| December | 12/13/2017 | 24.0 |
| | 12/21/2017 | 24.0 |
| | 12/26/2017 | 48.0 |
| February | 2/15/2018 | 10.0 |
| | 2/23/2018 | 24.0 |
| March | 3/1/2018 | 10.0 |
| | 3/9/2018 | 10.0 |
| | 3/15/2018 | 12.0 |
| | 3/19/2018 | 10.0 |
| | 3/22/2018 | 10.0 |
| 3/27/2018 | 12.0 | |
| Total | | 194.0 |

| Strait Richmond Hospital | | |
|--------------------------|-----------|--------------|
| Month | Date | Hours closed |
| June | 6/3/2017 | 25.0 |
| July | 7/29/2017 | 25.0 |
| September | 9/6/2017 | 24.0 |
| | 9/13/2017 | 25.0 |
| | 9/27/2017 | 25.0 |
| | 9/30/2017 | 17.0 |

| Month | Date | Hours closed |
|----------|------------|--------------|
| October | 10/1/2017 | 8.0 |
| | 10/11/2017 | 25.0 |
| | 10/25/2017 | 25.0 |
| November | 11/1/2017 | 25.0 |
| | 11/8/2017 | 25.0 |
| | 11/15/2017 | 25.0 |
| | 11/22/2017 | 25.0 |
| | 11/29/2017 | 25.0 |
| | 11/30/2017 | 5.0 |
| December | 12/6/2017 | 25.0 |
| | 12/15/2017 | 24.0 |
| | 12/20/2017 | 25.0 |
| | 12/25/2017 | 25.0 |
| | 12/27/2017 | 25.0 |
| | 12/31/2017 | 17.0 |
| January | 1/1/2018 | 8.0 |
| | 1/1/2018 | 48.0 |
| | 1/3/2018 | 24.0 |
| | 1/10/2018 | 25.0 |
| | 1/24/2018 | 25.0 |
| | 1/31/2018 | 17.0 |
| February | 2/1/2018 | 8.0 |
| | 2/7/2018 | 5.0 |
| | 2/10/2018 | 24.0 |
| | 2/11/2018 | 25.0 |
| | 2/15/2018 | 24.0 |
| | 2/16/2018 | 25.0 |
| | 2/28/2018 | 17.0 |
| March | 3/1/2018 | 8.0 |
| | 3/7/2018 | 25.0 |
| | 3/10/2018 | 25.0 |
| | 3/16/2018 | 25.0 |
| Total | | 828.0 |

ZONE 4

| Eastern Shore Memorial Hospital | | |
|---------------------------------|------------|--------------|
| Month | Date | Hours closed |
| May | 5/5/2017 | 24.0 |
| | 5/6/2017 | 24.0 |
| | 5/7/2017 | 12.0 |
| | 5/11/2017 | 24.0 |
| | 5/18/2017 | 24.0 |
| July | 7/18/2017 | 24.0 |
| | 7/24/2017 | 24.0 |
| | 7/27/2017 | 23.0 |
| December | 12/27/2017 | 48.0 |
| Total | | 227.0 |

| Musquodoboit Valley Memorial Hospital | | |
|---------------------------------------|-----------|--------------|
| Month | Date | Hours closed |
| April | 4/8/2017 | 12.0 |
| May | 5/14/2017 | 6.0 |
| June | 6/17/2017 | 12.0 |
| | 6/18/2017 | 12.0 |
| | 6/24/2017 | 12.0 |
| | 6/25/2017 | 12.0 |
| | 6/29/2017 | 12.0 |
| July | 7/1/2017 | 12.0 |
| | 7/2/2017 | 12.0 |
| | 7/24/2017 | 12.0 |
| | 7/25/2017 | 12.0 |
| | 7/27/2017 | 5.0 |
| | 7/28/2017 | 5.0 |
| | 7/31/2017 | 12.0 |

| Month | Date | Hours closed |
|-----------|------------|--------------|
| August | 8/2/2017 | 5.0 |
| | 8/4/2017 | 5.0 |
| | 8/5/2017 | 12.0 |
| | 8/6/2017 | 12.0 |
| | 8/9/2017 | 5.0 |
| | 8/11/2017 | 5.0 |
| | 8/12/2017 | 12.0 |
| | 8/14/2017 | 5.0 |
| | 8/15/2017 | 5.0 |
| | 8/17/2017 | 4.0 |
| | 8/18/2017 | 5.0 |
| | 8/21/2017 | 12.0 |
| | 8/23/2017 | 12.0 |
| | 8/28/2017 | 12.0 |
| | 8/30/2017 | 5.0 |
| September | 9/1/2017 | 5.0 |
| | 9/3/2017 | 12.0 |
| December | 12/25/2017 | 1.0 |
| Total | | 298.0 |

| Twin Oaks Memorial Hospital | | |
|-----------------------------|-----------|--------------|
| Month | Date | Hours closed |
| April | 4/21/2017 | 4.0 |
| May | 5/5/2017 | 12.0 |
| | 5/18/2017 | 4.0 |
| | 5/19/2017 | 12.0 |
| | 5/25/2017 | 12.0 |
| June | 6/2/2017 | 12.0 |
| | 6/26/2017 | 12.0 |
| | 6/30/2017 | 2.0 |
| July | 7/6/2017 | 12.0 |
| | 7/15/2017 | 12.0 |
| | 7/26/2017 | 12.0 |
| August | 8/10/2017 | 12.0 |
| September | 9/9/2017 | 12.0 |
| | 9/16/2017 | 12.0 |
| | 9/17/2017 | 12.0 |
| | 9/26/2017 | 12.0 |
| Total | | 166.0 |

© Crown copyright, Province of Nova Scotia, 2018
Annual Accountability Report on Emergency Departments
April 1, 2017 – March 31, 2018
Department of Health and Wellness
December 2018
ISBN 978-1-55457-916-7

