

Annual Accountability Report

on Emergency Departments

April 1, 2019 – March 31, 2020



Table of Contents

Introduction	1
Emergency Care in Nova Scotia	2
Emergency Department Closures	3
Percentage of scheduled hours open for 24/7/365 EDs, 2019–20	3
Hours of Operation and Collaborative Emergency Centres	4
ED Hours Closed/Open (by Zone, Facility and Facility Type), 2019–20	6
Temporary ED Closure Hours & Public Consultations by Zone	8
Appendix A: Temporary ED Closures by Date and Hours Closed	31

Introduction

This report presents data from Nova Scotia Health Authority (NSHA) and the IWK Health Centre (IWK) related to emergency department (ED) closures between April 1, 2019 – March 31, 2020.

Government and NSHA continue to work collaboratively to improve access to quality health care in Nova Scotia. Investments in several key initiatives are helping to ensure Nova Scotians have access to the care they need, when they need it.

A new contract with the province's doctors will help improve recruitment and retention, as well as access for Nova Scotians. The agreement makes emergency department doctors in Nova Scotia the highest paid in the region. An increase in the number of seats for nurse practitioner and physician training at Dalhousie University will ensure we can train more of these medical professionals here at home. Additionally, an emergency department locum program for doctors has helped keep EDs open. And continued progress on the QEII New Generation and Cape Breton Regional Municipality Health Care Redevelopment projects are making our health care system stronger.

Continued support and investment in physician recruitment efforts includes a new fund to support innovative community efforts to attract and keep doctors. An expanded clerkship program for medical students offers on-the-job training in family medicine in rural communities, and a new Practice Ready Assessment Program helps internationally trained family doctors work in Nova Scotia. Government continues to collaborate with nurses, pharmacists and paramedics to enable them to work to their full scopes of practice, giving Nova Scotians more options to access the care they need.

Government is committed to continuing this important work with its partners. That commitment remains, especially considering the ongoing COVID-19 global pandemic. On March 22, 2020, the Province declared a state of emergency and introduced a range of public health measures to help stop the spread of COVID-19, including changes to how some health services were delivered.

Responsibilities and Accountabilities

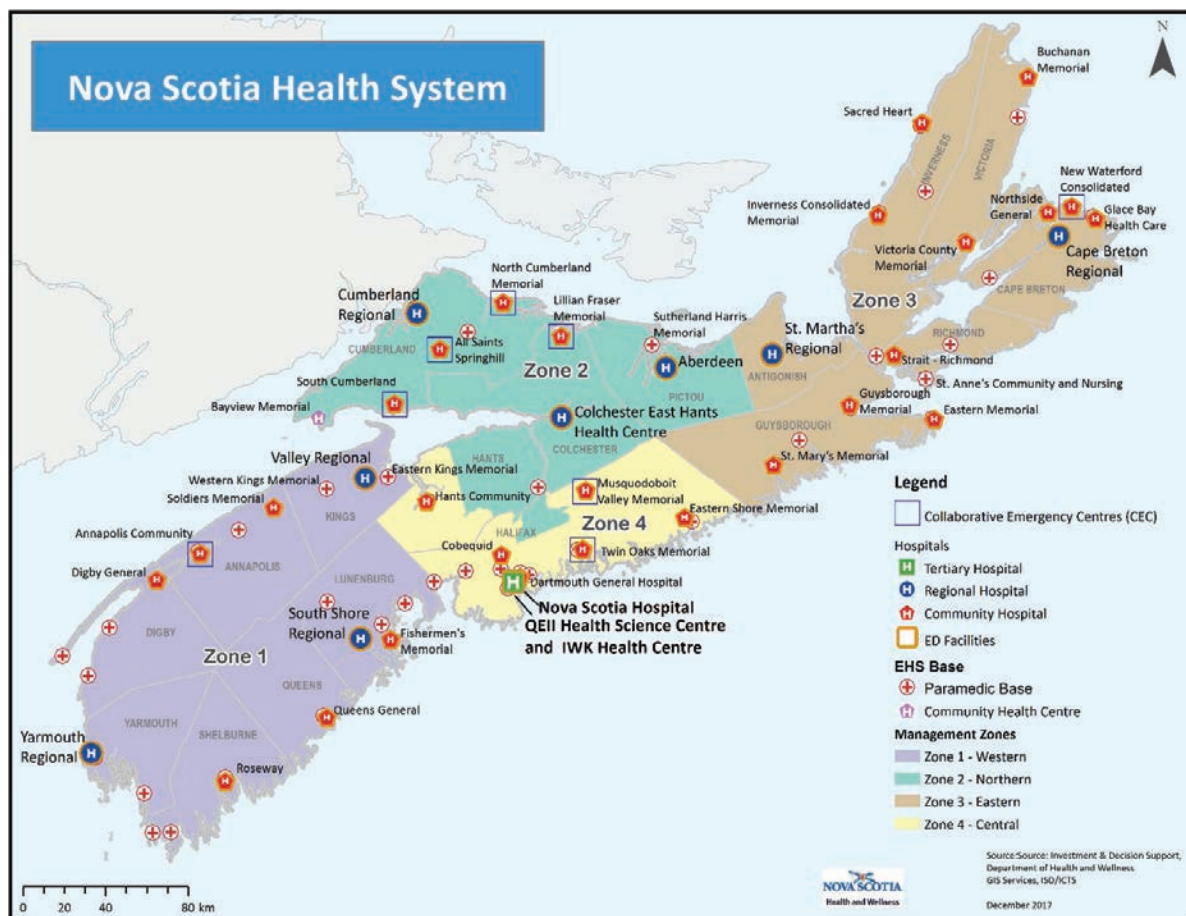
The Annual Accountability Report on Emergency Departments for the fiscal year ending March 31, 2020, is prepared pursuant to Section 6 of the Emergency Department Accountability Act (2014). This Act requires the Nova Scotia Health Authority and the IWK Health Centre report on all emergency department closures, hold public consultations in communities that have experienced a pattern of ongoing closures, and report on the outcomes of those consultations directly to the Minister of Health and Wellness.

Some hospitals in the province have established hours of operation that are different than 24/7. These are considered scheduled hours of closure and were established after consultation with communities. In 2019–20, 22 hospitals experienced temporary closures as a result of emergency department staff (nurses, physicians or paramedics) unavailability.

Emergency Care in Nova Scotia

Emergency departments (EDs) and their staff are an essential part of the province's healthcare system, quickly assessing and managing patients with unexpected illness or injury.

Most of Nova Scotia's 38 emergency departments operate on a 24/7 schedule, except for seven that have established different hours of operation after consultation with communities. These facilities are considered to have scheduled hours of closure. Unplanned emergency department closures are considered temporary closures. Typically, these closures are due to unavailability of emergency department staff (doctors, nurses, or paramedics). Twenty-two community hospitals experienced temporary closures in 2019–20.

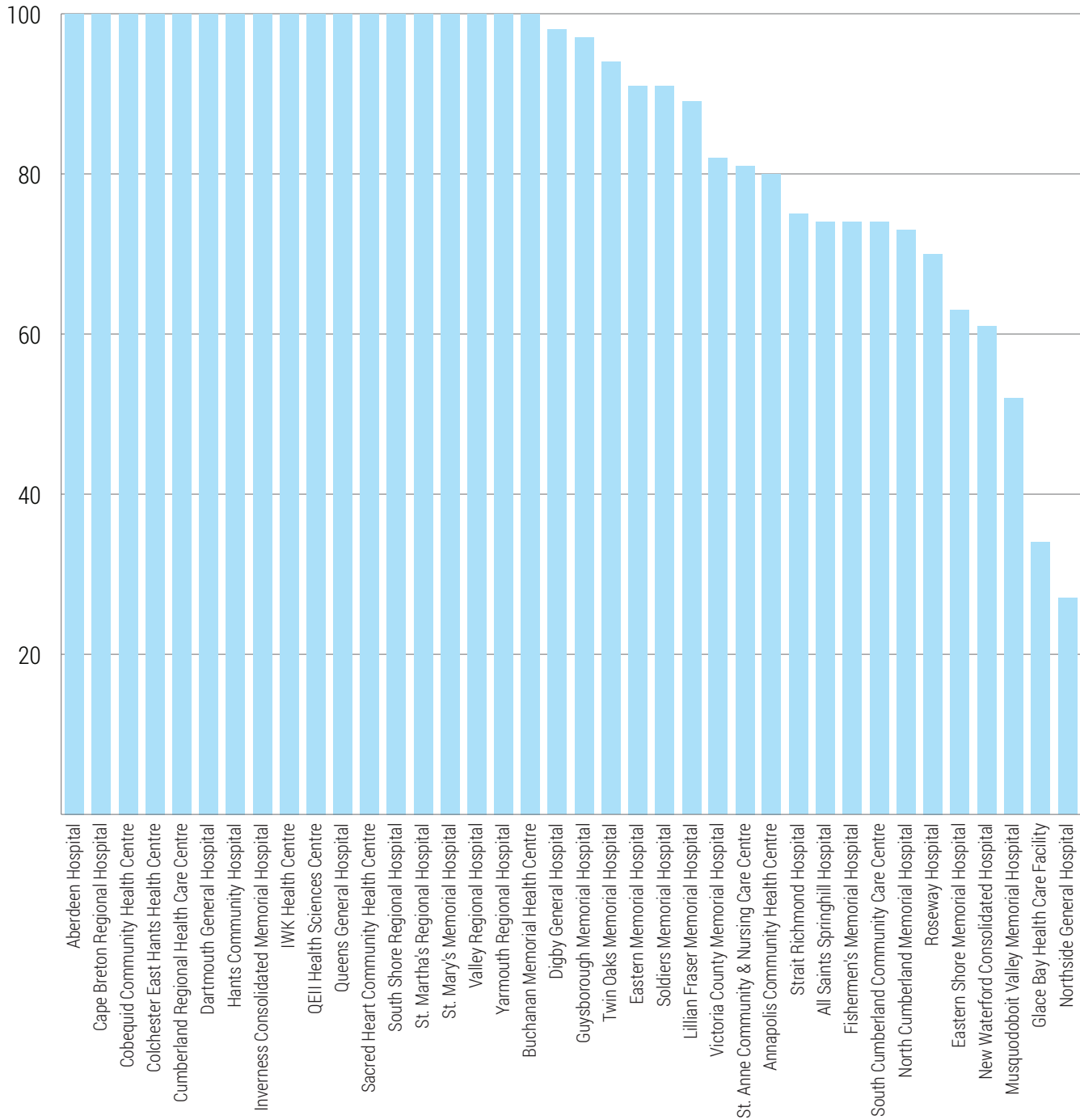


Most temporary closures occur in smaller, rural emergency departments. Tertiary care (IWK Health Centre and QEII Health Sciences Centre) and regional hospital emergency departments are required to be open 24 hours a day, seven days a week, 365 days a year. In community hospitals, when an ED has experienced an ongoing pattern of closures, the health authority consults with the local community to address concerns and identify a course of action. More information on consultations held in 2019–20 is included in this report.

In CBRM staffing has been a challenge with multiple emergency departments within 30 minutes of each other. The CBRM Health Care Redevelopment project will improve the situation with new facilities and better organizing the provision of care across the region.

Emergency Department Closures

Percentage of Scheduled Hours Open for Emergency Departments, 2019–20



Hours of Operation and Collaborative Emergency Centres

Nova Scotia’s emergency care system includes two tertiary care hospitals (QEII and IWK); nine regional hospitals; 19 community hospitals with emergency departments; eight collaborative emergency centres, and a 24/7/365 emergency health services (EHS) system. In addition, the province has a telecare service (811) to provide nursing advice and help callers determine the most appropriate level of care for their needs, and a mobile mental health line to support people in crisis.

Facility Type	Scheduled hours of operation
QEII and IWK	24/7
Regional hospital	24/7
Community hospital	Varies by facility
Collaborative Emergency Centre	Varies by facility
911 Emergency Health Services	24/7
811 Nurse Telecare	24/7
Mobile crisis line	24/7

Regional hospitals are required to maintain a 24/7, year-round schedule, and every effort is made to maintain a 24/7, year-round schedule for community hospitals with emergency departments.

CHANGES TO SCHEDULED HOURS IN 2019–20

On September 29, 2019, the New Waterford Consolidated Hospital closed its emergency department to complete renovations required by the local fire marshal.

During the first several months of 2020, the province worked collaboratively with NSHA to plan and prepare for health service delivery across the province during the anticipated COVID-19 pandemic. This included the consolidation of various emergency services, as well as model of care enhancements at various emergency departments to ensure Nova Scotians had access to emergency care when needed.

COLLABORATIVE EMERGENCY CENTRES

Collaborative Emergency Centres (CECs) were designed to provide access to primary health care with same-day or next-day appointments with expanded hours and a team approach to care. During nighttime hours, most CECs have a collaborative care team available made up of paramedics and/or registered nurses who are supported by an Emergency Health Services (EHS) physician providing oversight via phone consultation. There are eight CECs across the province.

Facility	Community	Scheduled hours of operation **
South Cumberland Community Care Centre	Parrsboro	24/7 year-round
All Saints Springhill Hospital	Springhill	24/7 year-round
North Cumberland Memorial Hospital	Pugwash	24/7 year-round
Twin Oaks Memorial Hospital	Musquodoboit Harbour	24/7 year-round
Annapolis Community Health Centre	Annapolis Royal	24/5 year-round, closed on Tuesdays and Thursdays
Musquodoboit Valley Memorial Hospital	Middle Musquodoboit	Daily (7 days/week), 8:00 am – 8:00 pm
New Waterford Consolidated Hospital	New Waterford ***	Tuesday – Saturday, 7:00 am – 5:00 pm
Lillian Fraser Memorial Hospital	Tatamagouche	Daily (7 days/week) Monday – Friday, 8:00 am – 4:00 pm and Saturday – Sunday, 8:00 am – 8:00 pm

**Beginning in early 2020, in an effort to proactively respond to changing conditions and enhance the system's ability to respond during the COVID-19 pandemic, the roles of various collaborative emergency centres were modified to better align available resources with care needs.

*** New Waterford Consolidated closed in September 2019 for renovations

It should be noted that regional hospitals in Amherst, Truro and New Glasgow provide emergency care 24/7. Emergency Health Services (EHS) diverted ambulances to the three regional emergency departments in support of ED model changes in Cumberland County, due to COVID-19.

ED Hours Closed/Open (by Zone, Facility and Facility Type), 2019–20

Zone	Facility type	Facility Name	Closure Hours 2019–20			Hours Open 2019–20	% Open 2019–20
			Temporary	Scheduled	Total		
1	Regional	South Shore Regional Hospital	0.0	0.0	11,129.0	8,784.0	100%
	Regional	Yarmouth Regional Hospital	0.0	0.0		8,784.0	100%
	Regional	Valley Regional Hospital	0.0	0.0		8,784.0	100%
	Community	Digby General Hospital	203.0	0.0		8,581.0	98%
	Community	Fishermen's Memorial Hospital	1,409.0	3,294.0		4,081.0	74%
	Community	Roseway Hospital	2,659.0	0.0		6,125.0	70%
	Community	Soldiers Memorial Hospital	770.0	0.0		8,014.0	91%
	Community	Queens General Hospital	0.0	0.0		8,784.0	100%
	CEC	Annapolis Community Health Centre	1,534.0	1,260.0		5,990.0	80%
2	Regional	Colchester East Hants Health Centre	0.0	0.0	8,771.5	8,784.0	100%
	Regional	Cumberland Regional Health Care Centre	0.0	0.0		8,784.0	100%
	Regional	Aberdeen Hospital	0.0	0.0		8,784.0	100%
	CEC	All Saints Springhill Hospital	2,295.5	88.0		6,400.5	75%
	CEC	North Cumberland Memorial Hospital	2,402.0	0.0		6,382.0	73%
	CEC	South Cumberland Community Care Centre	2,249.5	279.5		6,255.0	75%
	CEC	Lillian Fraser Memorial Hospital	884.0	1,048.0		6,852.0	89%

3	Regional	Cape Breton Regional Hospital	0.0	0.0	22,116.5	8,784.0	100%
	Regional	St. Martha's Regional Hospital	0.0	0.0		8,784.0	100%
	Community	Eastern Memorial Hospital	476.0	0.0		4,648.0	91%
	Community	Guysborough Memorial Hospital	266.0	0.0		8,518.0	97%
	Community	St. Anne Community & Nursing Care Centre	1,615.0	0.0		6,965.0	81%
	Community	St. Mary's Memorial Hospital	0.0	0.0		8,784.0	100%
	Community	Strait Richmond Hospital	2,164.0	0.0		6,620.0	75%
	Community	Buchanan Memorial Health Centre	0.0	0.0		8,784.0	100%
	Community	Glace Bay Health Care Facility	3911.0	464.0		2,059.0	23%
	Community	Inverness Consolidated Memorial Hospital	0.0	0.0		8,784.0	100%
	Community	Victoria County Memorial Hospital	1,579.5	0.0		7,204.0	82%
	Community	Northside General Hospital	2,125.0	6,144.0		792.0	27%
	Community	Sacred Heart Community Health Centre	0.0	0.0		8,784.0	100%
CEC	New Waterford Consolidated Hospital	538.0	6,235.0	839.0	61%		
4	Tertiary	QEII Health Sciences Centre	0.0	0.0	10,330.5	8,784.0	100%
	Regional	Dartmouth General Hospital	0.0	0.0		8,784.0	100%
	Community	Cobequid Community Health Centre	4.5	0.0		6,570.0	100%
	Community	Eastern Shore Memorial Hospital	3,252.5	0.0		5,531.5	63%
	Community	Hants Community Hospital	25.5	0.0		8,758.5	100%
	CEC	Musquodoboit Valley Memorial Hospital	2,089.0	4,392.0		2303.0	52%
	CEC	Twin Oaks Memorial Hospital	567.0	0.0		8,217.0	94%
IWK	Tertiary	IWK Health Centre	0.0	0.0		8,784.0	100%
		Total:	33,019.0	30,313.5	63,332.5	270,459.5	89%

Temporary ED Closure Hours and Public Consultations by Zone

Where an emergency department of a health authority has experienced an ongoing pattern of closure of the emergency department in the last fiscal year, the health authority shall consult with the community served by the emergency department as part of the consultations conducted in accordance with its next public engagement plan as defined by the Health Authorities Act (Emergency Department Accountability Act, 2014¹).

The following consultations were conducted based on facilities that experienced an ongoing pattern of temporary closures.

WESTERN ZONE (1)

Facility	Hours of temporary ED closures
Annapolis Community Health Centre	1,534.0 hours
Digby General Hospital	203.0 hours
Fishermen's Memorial Hospital	1,409.0 hours
Roseway Hospital	2,659.0 hours
Soldiers Memorial Hospital	770.0 hours
Total	6,575.0 hours

Public Consultation: Annapolis Community Health Centre

Date	Chair/Speakers	Attendance
May 28, 2019	Chair: Annapolis West Health Foundation	12–14
Sep 24, 2019	NSHA speaker: ACHC Site Manager	

Summary of discussion:

- Annapolis West Health Foundation meetings.
- Expected arrival of a new physician in the fall to increase compliment of physicians
 - Physician recruitment efforts
 - Ongoing planned closure of the CEC for Tuesdays and Thursdays due to physician shortage
 - Best practice of training then retaining and hiring Family Medicine Residents
 - Changing procedures for scheduled appointments in the CEC

¹ Emergency Department Accountability Act, 2009, RSNS 2014, c. 32, ss. 110–114

Western Zone Action (specific to Emergency Departments):

- Continue with planned closure of CEC on Tuesdays and Thursdays while new physician recruitment is underway. Messaging shared with the community
- Continue to work collaboratively with Zone Physician Recruiter and local stakeholders in the recruitment of physicians

Public Consultation: Digby General Hospital

Date	Chair/Speakers	Attendance
Sep 8, 2019	Director, Primary Health Care Western Zone NSHA Physician Recruitment Consultant	10

Summary of discussion:

Digby and Area Health Services Charitable Foundation

- Presentation by Physician Recruitment Consultant on current recruitment strategies; reviewed job fair attendance on behalf of the zone
- Charitable Foundation representatives outlined the role they have been playing in showcasing the Digby community during physician visits as well as their commitment to support locum providers with housing and social opportunities
- Discussed the current model being implemented in the Digby ED to support overall health services, which includes a Nurse Practitioner working collaboratively with a physician for 16 hours per day, Monday to Friday and 12 hours per day on weekends

Western Zone Action (specific to Emergency Departments):

- Physician recruitment attendance in the England Job Fair
- Continue implementation of the NP/Physician model of care; develop evaluation criteria
- Continue working collaboratively with Zone Physician Recruiter and local stakeholders in recruiting physicians for the emergency department as well as Primary Care

Date	Chair/Speakers	Attendance
Nov 27, 2019	Mayor, Town of Digby Director, Primary Care, Western Zone NSHA Physician Recruitment Consultant Western Zone Physician Recruitment Consultant NSHA Communications NSHA primary Care manager MLA Digby Area Warden, Digby Municipality Members of Weymouth Village Commission Chairmen Bear River Community Health Clinic	12

Summary of discussion:

- Presentation on current physician recruitment initiatives, including review of job fair attendance in England. Opportunity to meet with several primary care physicians potentially interested in rural medicine. No commitments to date for site visits
- Reviewed ED closures for October and November 2019 at the Digby General Hospital; both months had no closures and the December ED schedule currently had no deficiencies
- Updated ED provider model implemented at Digby ED, which included NP working collaboratively with physician. Three (3) NPs are now working within a schedule, which includes 0700 – 2300 hrs., Monday to Friday and 0700 – 1900 hrs., Saturday, and Sunday. Mayor reported that feedback from residents had been very positive referring to shorter wait times in particular
- Communications (NSHA) prepared an information release outlining the NP model in the ED as well as introducing the new NP team to the community. This information release was shared publicly in mid-December 2019
- Review of Primary Care updates supported for the Weymouth clinic following closure of a physician practice. NP from Digby Collaborative Care Centre and Clare Health Centre as well as Family Practice Nurse from Clare Health Centre provided one day per week coverage for primary care as well as provided group medical visits (diabetes, hyperlipidemia, chronic disease management)
- Round table discussion included
 - Benefits of organizing community open house to introduce new health care providers to the community including NPs as well as ED locum providers
 - Initiatives to attract additional healthcare providers to consider locum commitments for at least 6 months
 - Community support could include support with housing during providers locum commitment

Western Zone Action (specific to Emergency Departments):

- Continue with the evaluation of the NP/Physician model in the ED department. Evaluation criteria for the success of this model included wait times, volume of patients triaged and seen by a physician and the classifications based on CTAS scale
- Group committed to further review/discuss with community recruitment group, including representation from foundation, town and municipality
- Next meeting scheduled for February 2020

Public Consultation: Fisherman’s Memorial Hospital

Date	Chair/Speakers	Attendance
Feb 26, 2020	Site Leader, Manager Emergency Department Physician Recruiter Primary Health Care Manager Medical Site Lead	15
Summary of discussion: <ul style="list-style-type: none"> • Community partners invited to participate in a conversation regarding ED closures, access to primary care as well as physician recruitment • Participants were provided updates on closures at the site, as well as efforts underway to reduce closures, recruit physicians and improve access to primary care 		
Western Zone Action (specific to Emergency Departments): <ul style="list-style-type: none"> • Continue communication with community stakeholders • Continue to work with members of the community, specifically with regards to their involvement in site visits and linkages with local industry for spousal employment 		

Public Consultation: Roseway Hospital

Date	Chair/Speakers	Attendance
May 30, 2018	Health Services Lead, Roseway Hospital	5
Summary of discussion: Student Sponsorship. <ul style="list-style-type: none"> • Supporting local students, including options to assist with recruitment 		
Western Zone Action (specific to Emergency Departments): <ul style="list-style-type: none"> • Initiate planning of recruitment strategies 		

Date	Chair/Speakers	Attendance
Jun 14, 2019	NSHA Director, Public Engagement and Community Health Board Support Consultant, Worldview Intelligence	3
<p>Summary of discussion:</p> <ul style="list-style-type: none"> Community and public engagement to discuss strategies/solutions to improve morale thus making it a more welcoming community to recruit and retain health care professionals 		
<p>Western Zone Action (specific to Emergency Departments):</p> <ul style="list-style-type: none"> Develop strategies and solutions related to recruitment and retention 		
Date	Chair/Speakers	Attendance
Jul 10, 2019	Western Zone Health Services Director Emergency Program of Care and Health Systems Leader (South Shore Regional and Queens Hospital)	3
<p>Summary of discussion:</p> <ul style="list-style-type: none"> Emergency Department/EHS Planning Committee led discussion regarding ED Closures and the impact on community partners/stakeholders Group brainstorming session regarding mitigation options for ED closures 		
<p>Western Zone Action (specific to Emergency Departments):</p> <ul style="list-style-type: none"> Continue to work collaboratively with Zone Physician recruiter and local stakeholders in recruiting physicians Commitment to continue regular communication with the community 		
Date	Chair/Speakers	Attendance
Jul 25, 2019	Health Services Site Lead, Roseway Hospital	2
<p>Summary of discussion:</p> <ul style="list-style-type: none"> Meeting with Warden, Municipality District, Shelburne to answer questions from the municipality regarding changing legislation for Nurse Practitioners to be able to admit patients, in an effort to alleviate some of the pressure the site experiences during an ED closure. 		
<p>Western Zone Action (specific to Emergency Departments):</p> <ul style="list-style-type: none"> Utilize Nurse Practitioners to help alleviate pressures during an ED closure. 		

Date	Chair/Speakers	Attendance
Aug 14, 2019	Health Services Site Lead, Roseway Hospital	2
<p>Summary of discussion:</p> <ul style="list-style-type: none"> • Discuss with Warden, Municipality District, Shelburne opportunities to showcase the hospital to prospective recruits 		
<p>Action (specific to Emergency Departments):</p> <ul style="list-style-type: none"> • Continue meetings with the Warden, Municipality District, Shelburne regarding physician visits/tours. 		
Date	Chair/Speakers	Attendance
Aug 28, 2019	Health Services Site Lead, Roseway Hospital	2
<p>Summary of discussion:</p> <ul style="list-style-type: none"> • Meeting with the Warden, Municipality District, Shelburne regarding physician resources and options as to how the Municipality could assist with recruitment (incentives). 		
<p>Western Zone Action (specific to Emergency Departments):</p> <ul style="list-style-type: none"> • Commitment to engage the Municipality on an ongoing basis, regarding recruitment and retention strategies 		
Date	Chair/Speakers	Attendance
Sep 5, 2019	Western Zone Health Services Director Emergency Program of Care and Health Systems Leader (South Shore Regional and Queens Hospital)	8
<p>Summary of discussion:</p> <ul style="list-style-type: none"> • Emergency Department/EHS Planning Committee discussed potential model of care changes for the Roseway Hospital to decrease closures and maximize current resources 		
<p>Western Zone Action (specific to Emergency Departments):</p> <ul style="list-style-type: none"> • Continue ongoing discussions to ensure current resources are being maximized • Continue to work collaboratively with Zone Physician recruiter and local stakeholders in recruiting physicians 		

Date	Chair/Speakers	Attendance
Sep 12, 2019	Health Services Site Lead, Roseway Hospital Site Physicians x 5 Health Services manager, Primary Health Care Physician Recruitment Consultant – Western Zone	8
<p>Summary of discussion:</p> <ul style="list-style-type: none"> Engagement with local physician group to determine their perspective on healthcare delivery for the future in Shelburne 		
<p>Western Zone Action (specific to Emergency Departments):</p> <ul style="list-style-type: none"> Continue working collaboratively with Zone Physician Recruiter and local stakeholders in recruiting physicians 		
Date	Chair/Speakers	Attendance
Sep 12, 2019	Director, Public Engagement and Community Health Board Support Consultant, Worldview Intelligence	25
<p>Summary of discussion:</p> <ul style="list-style-type: none"> NSHA led session to engage with multiple community partners and stakeholders to discuss community engagement related to provision of health services, including primary care and emergency services. 		
<p>Western Zone Action (specific to Emergency Departments):</p> <ul style="list-style-type: none"> Continue to develop option and initiatives to engage the broader community in partnering 		
Date	Chair/Speakers	Attendance
Nov 16, 2019	Consultant, Worldwide Intelligence NSHA Public Engagement Advisors	9
<p>Summary of discussion:</p> <ul style="list-style-type: none"> Public Engagement Session in the town of Lockport. Open forum discussion with members of the community to brainstorm innovative ways to optimize current physician resources, specifically to assess different models of care options provided to this community by Roseway Hospital 		
<p>Western Zone Action (specific to Emergency Departments):</p> <ul style="list-style-type: none"> Continue to assess and discuss different models of care 		

Date	Chair/Speakers	Attendance
Nov 16, 2019	Consultant, Worldwide Intelligence NSHA Public Engagement Advisors	10
<p>Summary of discussion:</p> <ul style="list-style-type: none"> Public Engagement Session in the town of Barrington. Open forum discussion with members of the community to brainstorm innovative ways to optimize current physician resources, specifically to assess different models of care options 		
<p>Western Zone Action (specific to Emergency Departments):</p> <ul style="list-style-type: none"> Continue to assess and discuss different models of care 		
Date	Chair/Speakers	Attendance
Nov 17, 2019	Consultant, Worldwide Intelligence NSHA Public Engagement Advisors	12
<p>Summary of discussion:</p> <ul style="list-style-type: none"> Public Engagement Session in the town of (Clark's Harbour). Open forum discussion with members of the community to brainstorm innovative ways to optimize current physician resources, specifically to assess different models of care options. 		
<p>Western Zone Action (specific to Emergency Departments):</p> <ul style="list-style-type: none"> Continue to assess and discuss different models of care 		
Date	Chair/Speakers	Attendance
Nov 18, 2019	Consultant, Worldwide Intelligence NSHA Public Engagement Advisors	24
<p>Summary of discussion:</p> <ul style="list-style-type: none"> Public Engagement Session in the town of (Shelburne). Open forum discussion with members of the community to brainstorm innovative ways to optimize current physician resources, specifically to assess different models of care options 		
<p>Western Zone Action (specific to Emergency Departments):</p> <ul style="list-style-type: none"> Continue to assess and discuss different models of care 		

Date	Chair/Speakers	Attendance
Nov 27, 2019	Chair, Healthcare Professional Recruitment and Retention Committee NSHA Public Engagement Physician Recruitment Consultant – Western Zone	8
<p>Summary of discussion:</p> <ul style="list-style-type: none"> • Strategies for recruiting positions for Emergency Department at Roseway Hospital as well as Inpatient and Primary Care 		
<p>Western Zone Action (specific to Emergency Departments):</p> <ul style="list-style-type: none"> • Continue to work on strategies for recruiting physicians to the Emergency Department 		
Date	Chair/Speakers	Attendance
Dec 3, 2019	Health Services Site Lead – Roseway Hospital	2
<p>Summary of discussion:</p> <ul style="list-style-type: none"> • Meeting with the Warden, Municipality District Shelburne to discuss recruitment incentives 		
<p>Western Zone Action (specific to Emergency Departments):</p> <ul style="list-style-type: none"> • Maintain regular communication with the municipality regarding potential recruits as well as incentive options 		
Date	Chair/Speakers	Attendance
Dec 18, 2019	Chair, Healthcare Professional Recruitment and Retention Committee	8
<p>Summary of discussion:</p> <ul style="list-style-type: none"> • Strategies for recruiting positions for Emergency Department as well as Inpatient and Primary Care 		
<p>Western Zone Action (specific to Emergency Departments):</p> <ul style="list-style-type: none"> • Continue to work on strategies for recruiting physicians to the Emergency Department 		

Public Consultation: Soldier's Memorial Hospital

Date	Chair/Speakers	Attendance
April 24, 2019	Chair, Soldiers' Memorial Hospital Foundation	10
June 17, 2019	Health Services Site Lead – Soldiers Memorial	
Aug 30, 2019		
Summary of discussion: <ul style="list-style-type: none">• Updating Hospital Foundation on ED closures, lack of physician availability, related to recent retirements and relocations of physicians• Quarterly data shared at each of the meetings• Updating on physician onboarding activities as well as recruitment initiatives and success		
Western Zone Action (specific to Emergency Departments): <ul style="list-style-type: none">• Continue regular communication with foundation regarding physician and nursing resources• Continue plans and strategies to maintain nursing recruitment and retention		

NORTHERN ZONE (2)

Facility	Hours of temporary ED closures
All Saints Springhill Hospital	2,229.5 hours
Lillian Fraser Memorial Hospital	884.0 hours
North Cumberland Memorial Hospital	2,402.0 hours
South Cumberland Community Care Centre	2,249.5 hours
Total	7,831.0 hours

Public Consultation: All Saints Springhill Hospital

Date	Chair/Speakers	Attendance
Nov 19, 2019	Health Services Site Lead, All Saints Springhill Hospital and South Cumberland Community Care Centre	8
<p>Summary of discussion:</p> <ul style="list-style-type: none"> • Emergency schedule coverage • Physicians continue to provide coverage, (including primary care providers and locums) • Nursing staff continues to remain in place during the nighttime provision of service 		
<p>Northern Zone Action (specific to Emergency Departments):</p> <ul style="list-style-type: none"> • Continue working collaboratively with NSHA recruitment team and community partners to recruit physicians 		

Public Consultation: South Cumberland Memorial Hospital

Date	Chair/Speakers	Attendance
Sep 24, 2019	Health Services Site Lead, All Saints Springhill Hospital and South Cumberland Community Care Centre	7
<p>Summary of discussion:</p> <ul style="list-style-type: none"> • Shared and discussed the overall emergency schedule with members of the public as well as members of the foundation board of directors 		
<p>Northern Zone Action (specific to Emergency Departments):</p> <ul style="list-style-type: none"> • Continue collaboration with recruitment and local stakeholders in recruiting physicians • Maintain locum coverage, as needed. 		

EASTERN ZONE (3)

Facility	Hours of temporary ED closures
Eastern Memorial Hospital	476.0 hours
Glace Bay Health Care Facility	3911.0 hours
Guysborough Memorial Hospital	266.0 hours
New Waterford Consolidated Hospital	538.0 hours
Northside General Hospital	2,125.0 hours
St. Anne Community & Nursing Care Centre	1,615.0 hours
Strait Richmond Hospital	2,164.0 hours
Victoria County Memorial Hospital	1,579.5 hours
Total	12,674.5 hours

Public Consultation: Eastern Memorial Hospital

Date	Chair/Speakers	Attendance
May 1, 2019	Executive Director, Operations – Eastern Zone	15
May 24, 2019	Director, Integrated Health – Rural Sites	
Jun 17, 2019	Eastern Memorial Foundation Members	
Sep 9, 2019	Canso Municipality members Community Health Board Eastern Memorial Hospital Auxiliary	
<p>Summary of discussion:</p> <p>Canso & Area Working group</p> <ul style="list-style-type: none"> • Current nursing resource challenges • Community engagement around opportunities for community to participate in recruitment & retention 		
<p>Eastern Zone Action (specific to Emergency Departments):</p> <ul style="list-style-type: none"> • Continue working with recruitment for recruiting nursing staff • Continue to offer NSHA incentive packages • Continue collaboration with the Canso & Area Working Group for community-based recruitment strategies <ul style="list-style-type: none"> - Develop working group; meetings held May 24, 2019, June 17, 2019, September 9, 2019 		

Date	Chair/Speakers	Attendance
Jun 6, 2019	President & CEO NSHA Co-Chairs, Canso & Area Working Group Executive Director Operations – Eastern Zone Eastern Memorial Foundation Members Canso Municipality members Community Health Board Eastern Memorial Hospital Auxiliary	9
Summary of discussion: <ul style="list-style-type: none"> • Recruitment challenges for staff and physicians 		
Eastern Zone Action (specific to Emergency Departments): <ul style="list-style-type: none"> • Continue working collaboratively with recruitment and local stakeholders in recruiting nursing staff and physicians • Continue collaboration with the Canso & Area Working Group for community-based recruitment strategies 		
Date	Chair/Speakers	Attendance
Jun 24, 2019	Constituency Assistant for the Honourable Lloyd Hines, MLA	14
Jul 22, 2019	Director Integrated Health – Rural Sites Eastern Zone Health Services Site Lead, Eastern Memorial Hospital NSHA Public Engagement and Communications NSHA Recruitment Consultant Eastern Zone Physicians and staff Members of: <ul style="list-style-type: none"> • Community • Municipal Council • Lions Club • Eastern Memorial Hospital Foundation • Canso Medical Co-operative • Guysborough County Inshore Fisherman’s Association • Teacher, Education Sector • Welcome Committee 	

Summary of discussion:

Canso & Area Working group

- Recruitment challenges for staff and physicians

Eastern Zone Action (specific to Emergency Departments):

- Continue working collaboratively with recruitment and local stakeholders in recruiting staff and physicians
- Continue collaboration with the Canso & Area Working Group for community-based recruitment strategies

Date	Chair/Speakers	Attendance
Oct 15, 2019	Co-Chairs, Canso & Area Working Group	9
Nov 18, 2019	NSHA Recruitment Consultant Eastern Zone Staff Community Members	

Summary of discussion:

Canso & Area Working group

- Review of current staffing situation
- Updates on efforts to date for recruitment on hard to fill positions (i.e. nursing)
- Round table conversations
- Discussion of next steps
- Cape Breton Redevelopment, care access, transportation
- Regular meeting and agenda established

Eastern Zone Action (specific to Emergency Departments):

- Continue working collaboratively with recruitment and local stakeholders in recruiting staff and physicians
- Continue collaboration with the Canso & Area Working Group for community-based recruitment strategies
- Regular meetings and agenda established

Public Consultation: Guysborough Memorial Hospital

Date	Chair/Speakers	Attendance
Jun 6, 2019	President and CEO NSHA Executive Director Operation, Eastern Zone Director Integrated Health, Eastern Zone Health Services Site Lead, Guysborough Memorial Hospital Director, Public Engagement and Community Health Board Support Members of Guysborough Municipal Council	10
Summary of discussion: <ul style="list-style-type: none"> • Review of current staffing situation – physicians and nursing • Updates on efforts to date for recruitment on hard to fill positions (i.e. nursing) 		
Eastern Zone Action (specific to Emergency Departments): <ul style="list-style-type: none"> • Continue working collaboratively with recruitment and local stakeholders (Guysborough Council) in recruiting physicians 		

Date	Chair/Speakers	Attendance
Jul 30, 2019	Minister of Health Deputy Minister (Interim), Department of Health and Wellness MLA – Guysborough, Eastern Shore-Tracadie President & CEO NSHA Executive Director Operations-Eastern Zone Director Integrated Health- Rural Sites Eastern Zone Health Services Site Lead, Guysborough Memorial Hospital NSHA Advisor, Issues Management and Stakeholder Relations, Communications & Public Relations; Members of Guysborough Municipality Council	20
Summary of discussion: <ul style="list-style-type: none"> • Health care services in Guysborough County 		
Eastern Zone Action (specific to Emergency Departments): <ul style="list-style-type: none"> • Continue working collaboratively with recruitment and local stakeholders (Guysborough Council) in recruiting physicians 		

Public Consultation: Strait Richmond Hospital

Date	Chair/Speakers	Attendance
Aug 9, 2019	Health Services Site Lead – Strait Richmond Hospital Council members – Town of Port Hawkesbury Members of Council	10
<p>Summary of discussion:</p> <ul style="list-style-type: none"> • Review of emergency closures to date • Review of physician and nursing recruitment • Discussion of collaboration to develop strategies 		
<p>Eastern Zone Action (specific to Emergency Departments):</p> <ul style="list-style-type: none"> • Continue working collaboratively with NSHA recruitment team and community partners to recruit physicians and nurses 		
Date	Chair/Speakers	Attendance
Sep 12, 2019	Executive Director Operations, Eastern Zone Health Services Site Lead – Strait Richmond Hospital Members of Strait Richmond Hospital Foundation	10
<p>Summary of discussion:</p> <ul style="list-style-type: none"> • Capital equipment needs reviewed • Redevelopment project update • Review of emergency closures to date • Review of physician and nursing recruitment 		
<p>Eastern Zone Action (specific to Emergency Departments):</p> <ul style="list-style-type: none"> • Continue working collaboratively to deliver quality emergency services • Continue working collaboratively with NSHA recruitment team and community partners to recruit physicians and nurses 		

Public Consultation: Victoria County Memorial Hospital

Date	Chair/Speakers	Attendance
Sep 18, 2019	Executive Director Operation, Eastern Zone Site Physicians Warden, Victoria County Town Councilors VCMH Foundation Members	12
<p>Summary of discussion:</p> <ul style="list-style-type: none"> • Emergency closures • Recruitment challenges • Review of visit statistics 		
<p>Eastern Zone Action (specific to Emergency Departments):</p> <ul style="list-style-type: none"> • Continue working collaboratively with recruitment and local stakeholders in recruiting staff and physicians 		
Date	Chair/Speakers	Attendance
Sep 30, 2019	Health Services Site Lead – Victoria County Memorial Hospital Warden, Victoria County Town Councilors Members of the public	15
<p>Summary of discussion:</p> <ul style="list-style-type: none"> • Emergency closures • Recruitment challenges • Review of visit statistics 		
<p>Eastern Zone Action (specific to Emergency Departments):</p> <ul style="list-style-type: none"> • Continue working collaboratively with recruitment and local stakeholders in recruiting staff and physicians 		

Date	Chair/Speakers	Attendance
Oct 6, 2019	Health Services Site Lead – Victoria County Memorial Hospital Warden, Victoria County Site Physicians NSHA Physician Recruitment	15
<p>Summary of discussion:</p> <ul style="list-style-type: none"> • Examine the resource needs of physicians • Discuss role of NSHA Physician Recruitment to start process of resurrecting the VCMH Physician Recruitment Committee • Concerns from a physician perspective 		
<p>Eastern Zone Action (specific to Emergency Departments):</p> <ul style="list-style-type: none"> • Work collaboratively to strategize ways to maintain physician coverage at VCMH • Explore ideas of how the community can assist with recruitment and retention • Continue working collaboratively with recruitment and local stakeholders in recruiting staff and physicians 		
Date	Chair/Speakers	Attendance
Oct 14, 2019	Health Services Site Lead – Victoria County Memorial Hospital Warden, Victoria County Foundation Members	12
<p>Summary of discussion:</p> <ul style="list-style-type: none"> • Discuss approaches with the Foundation & Community to assist with recruitment efforts to reduce the amount of Emergency Department closures 		
<p>Eastern Zone Action (specific to Emergency Departments):</p> <ul style="list-style-type: none"> • Formalize a committee to develop a collaborative approach for recruitment of physicians 		

Date	Chair/Speakers	Attendance
Oct 17, 2019	Health Services Site Lead – Victoria County Memorial Hospital Warden, Victoria County Foundation Members	12
<p>Summary of discussion:</p> <ul style="list-style-type: none"> • Warden/Councilor discussed with the Foundation next steps in assisting with recruitment of emergency physicians 		
<p>Eastern Zone Action (specific to Emergency Departments):</p> <ul style="list-style-type: none"> • Further consultations to be held with the public to set up four committees • Warden and others to meet with physician groups in Baddeck and Neil's Harbour 		
Date	Chair/Speakers	Attendance
Nov 13, 2019	Warden, Victoria County Community Facilitator	120
<p>Summary of discussion:</p> <ul style="list-style-type: none"> • Facilitator completed a poll of the audience to see who had concerns about the local Emergency Department • Requested people sign up for 4 different committees 		
<p>Eastern Zone Action (specific to Emergency Departments):</p> <ul style="list-style-type: none"> • Established 4 local committees to help with recruitment of physician 		

Public Consultation: Victoria County Council Meeting

Date	Chair/Speakers	Attendance
May 6, 2019	Executive Director Operation, Eastern Zone	25
<p>Summary of discussion:</p> <p>Open town council meeting</p> <ul style="list-style-type: none"> • Impact of closures in CBRM and how that is impacted VCMH • Nursing, Physician recruitment, other healthcare providers 		
<p>Eastern Zone Action (specific to Emergency Departments):</p> <ul style="list-style-type: none"> • Commitment to return for further discussions when asked • Commitment to continue to engage on CBRM redevelopment with updates and input as needed through redevelopment team, local leadership and/or zone leadership • Continue working collaboratively with recruitment and local stakeholders in recruiting staff and physicians 		

Public Consultation: Council of Community Board Chairs

Date	Chair/Speakers	Attendance
Oct 5, 2019	Executive Director Operations, Eastern Zone Consultant, Strategic partnership Engagement for Healthy Communities – Eastern Zone Eastern Zone Community Health Board Chairs	12
<p>Summary of discussion:</p> <ul style="list-style-type: none"> • Physician, nurse and other healthcare providers recruitment and retention initiatives • Closures and impacts on community 		
<p>Eastern Zone Action (specific to Emergency Departments):</p> <ul style="list-style-type: none"> • Commitment to provide any updates related to recruitment, retention and closure mitigations, when requested 		

CENTRAL ZONE (4)

Facility	Hours of temporary ED closures
Eastern Shore Memorial Hospital	3,252.5 hours
Musquodoboit Valley Memorial Hospital	2,089.0 hours
Twin Oaks Memorial Hospital	567.0 hours
Hants Community Hospital	25.5 hours
Cobequid Community Health Centre	4.5 hours
Total	5,938.5 hours

Public Consultation: Eastern Shore Memorial Hospital

Date	Chair/Speakers	Attendance
Jun 22, 2019	Member of the Senate of Canada Executive Medical Director Operations, Central Zone Executive Director Operations, Central Zone Physician Lead, Department of Family Practice Physician Leader, Tri Facilities Director, Primary Health Care and Family Practice Director (interim) Tri facilities and Health Services Manager Members of Sheet Harbor Health Committee	50
<p>Summary of discussion:</p> <p>Town Hall – open to the public (advertised in local/social media and local merchants; all community members received the information for the Town Hall by Canada Post</p> <ul style="list-style-type: none"> • Overview of healthcare services including HR resourcing of staff and physicians, emergency closures and collaborative care initiative • Identified NP, nursing initiative recruitment actions • Identified communication issues with community 		
<p>Central Zone Action (specific to Emergency Departments):</p> <ul style="list-style-type: none"> • Ongoing recruitment to vacant positions • Working with NSHA communications and community stakeholders to develop means to better inform the community of ongoing work 		

Public Consultation: Musquodoboit Valley Memorial Hospital

Date	Chair/Speakers	Attendance
Jun 20, 2019	MLA Colchester – Musquodoboit Valley Director (interim) Tri Facilities and Health Services Manager Health Services manager, Musquodoboit Valley Memorial Hospital Health Services Manager, Department of Family Practice	4
<p>Summary of discussion:</p> <ul style="list-style-type: none"> • Update on nursing and physician resourcing • Review closures • Review collaborative care initiative 		
<p>Central Zone ACTION (specific to Emergency Departments):</p> <ul style="list-style-type: none"> • Continue working collaboratively with recruitment and local stakeholders in recruiting staff and physicians 		

Public Consultation: Twin Oaks Memorial Hospital

Date	Chair/Speakers	Attendance
Feb 19, 2020	Senior Director, Emergency Program of Care Executive Director, Central Zone Operations Director (interim) Tri Facilities and Health Services Manager Director, Primary Health Care and Family Practice Health Services Manager (TOMH) Health Services Manager (MVMH) Physician Leader, Tri Facilities	40
<p>Summary of discussion:</p> <p>Chamber of Commerce Meeting; open forum, publicly announced and streamed</p> <ul style="list-style-type: none"> • Emergency closure hours over past two fiscal years • HHR recruitment successes and challenges • Physician recruitment successes and challenges • Model of Care changes to decrease nursing related closures – beginning March 1, 2020 • Physician scheduling changes to improve workload and decrease closures – March 16, 2020 • Additional questions on resources, closure information, internet reliability for notice 		
<p>Central Zone ACTION (specific to Emergency Departments):</p> <ul style="list-style-type: none"> • Improve closure communication by using increased social media – Facebook; 3 accounts for communities • Return to community through this avenue 		

Appendix A: Temporary ED closures by date and hours closed

Reporting period: April 1, 2019 – March 31, 2020

ZONE 1 (WESTERN)

Annapolis Community Health Centre		
Month	Date	Hours closed
April	2019-04-02	12
	2019-04-04	12
	2019-04-09	12
	2019-04-11	12
	2019-04-16	12
	2019-04-18	12
	2019-04-20	12
	2019-04-23	12
	2019-04-25	12
	2019-04-26	12
	2019-04-30	12

May	2019-05-02	12
	2019-05-03	12
	2019-05-06	12
	2019-05-07	12
	2019-05-09	12
	2019-05-12	12
	2019-05-13	12
	2019-05-14	12
	2019-05-16	12
	2019-05-21	12
	2019-05-23	12
	2019-05-24	12
	2019-05-25	12
	2019-05-26	8
2019-05-28	12	
2019-05-30	12	
June	2019-06-03	6
	2019-06-04	12
	2019-06-06	12
	2019-06-08	12
	2019-06-09	12
	2019-06-11	12
	2019-06-13	12
	2019-06-15	9
	2019-06-16	12
	2019-06-18	12
	2019-06-20	12
2019-06-25	12	
2019-06-27	12	

July	2019-07-01	12
	2019-07-02	12
	2019-07-04	12
	2019-07-09	12
	2019-07-11	12
	2019-07-12	12
	2019-07-13	8
	2019-07-16	12
	2019-07-18	12
	2019-07-22	12
	2019-07-23	12
	2019-07-25	12
	2019-07-30	12
	August	2019-08-02
2019-08-04		12
2019-08-05		12
2019-08-06		12
2019-08-08		12
2019-08-13		12
2019-08-15		12
2019-08-16		12
2019-08-20		12
2019-08-22		14
2019-08-23		12
2019-08-27		12
2019-08-29		12
2019-08-30		12

September	2019-09-03	12
	2019-09-05	12
	2019-09-10	12
	2019-09-12	12
	2019-09-17	12
	2019-09-19	12
	2019-09-22	12
	2019-09-24	12
	2019-09-25	20
	2019-09-26	12
	October	2019-10-01
2019-10-03		12
2019-10-08		12
2019-10-10		12
2019-10-15		12
2019-10-17		12
2019-10-22		12
2019-10-24		12
2019-10-29		12
2019-10-31	12	

November	2019-11-05	12
	2019-11-07	12
	2019-11-12	12
	2019-11-14	12
	2019-11-19	12
	2019-11-21	12
	2019-11-22	12
	2019-11-26	12
	2019-11-28	12
December	2019-12-02	12
	2019-12-03	12
	2019-12-05	12
	2019-12-06	12
	2019-12-10	12
	2019-12-12	12
	2019-12-17	12
	2019-12-19	12
	2019-12-24	12
	2019-12-26	12
	2019-12-31	12
January	2020-01-07	12
	2020-01-09	12
	2020-01-14	12
	2020-01-16	12
	2020-01-17	6
	2020-01-21	12
	2020-01-23	12
	2020-01-28	12
	2020-01-30	12

February	2020-02-04	12
	2020-02-06	12
	2020-02-11	12
	2020-02-13	12
	2020-02-18	12
	2020-02-19	12
	2020-02-20	12
	2020-02-22	5
	2020-02-25	12
	2020-02-27	12
	March	2020-03-21
2020-03-22		12
2020-03-27		18
2020-03-30		6
Total		1,534.0

Digby General Hospital		
Month	Date	Hours closed
April	2019-04-03	14
May	2019-05-12	14
	2019-05-16	14
	2019-05-19	19
June	2019-06-26	14
	2019-06-30	24
July	2019-07-01	24
	2019-07-02	16
	2019-07-04	14
	2019-07-21	10
August	2019-08-03	12
March	2020-03-25	14
	2020-03-27	14
Total		203.0

Fishermen's Memorial Hospital		
Month	Date	Hours closed
April	2019-04-01	8.5
	2019-04-03	8.5
	2019-04-04	8.5
	2019-04-20	12.5
	2019-04-28	8.5
	2019-04-30	8.5

May	2019-05-01	8.5
	2019-05-04	8.5
	2019-05-11	8.5
	2019-05-12	8.5
	2019-05-13	8.5
	2019-05-14	8.5
	2019-05-16	8.5
	2019-05-17	8.5
	2019-05-18	8.5
	2019-05-19	8.5
	2019-05-20	8.5
	2019-05-24	8.5
	2019-05-25	23.5
	2019-05-26	22.5
	2019-05-27	8.5
	2019-05-28	15.5
2019-05-31	8.5	

June	2019-06-01	8.5
	2019-06-02	8.5
	2019-06-03	8.5
	2019-06-04	8.5
	2019-06-05	8.5
	2019-06-08	8.5
	2019-06-11	8.5
	2019-06-12	8.5
	2019-06-15	15
	2019-06-16	8.5
	2019-06-20	8.5
	2019-06-22	8.5
	2019-06-25	8.5
	2019-06-26	8.5
	2019-06-28	8.5
	2019-06-29	8.5
	2019-06-30	15

July	2019-07-01	8.5
	2019-07-03	8.5
	2019-07-04	8.5
	2019-07-05	8.5
	2019-07-06	15
	2019-07-07	8.5
	2019-07-10	8.5
	2019-07-11	8.5
	2019-07-12	8.5
	2019-07-13	8.5
	2019-07-25	8.5
	2019-07-26	8.5
	2019-07-27	8.5
	2019-07-28	8.5
	2019-07-31	8.5

August	2019-08-02	15
	2019-08-03	8.5
	2019-08-04	8.5
	2019-08-10	8.5
	2019-08-11	5.5
	2019-08-13	5
	2019-08-15	6
	2019-08-16	8.5
	2019-08-17	8.5
	2019-08-20	8.5
	2019-08-21	15
	2019-08-22	8.5
	2019-08-23	15
	2019-08-24	15
	2019-08-25	8.5
	2019-08-27	8.5
	2019-08-30	15
	2019-08-31	8.5

September	2019-09-06	8.5
	2019-09-07	8.5
	2019-09-08	8.5
	2019-09-12	8.5
	2019-09-13	8.5
	2019-09-14	8.5
	2019-09-15	8.5
	2019-09-20	8.5
	2019-09-22	15
	2019-09-24	8.5
	2019-09-25	10.5
	2019-09-26	15
	2019-09-27	8.5
	2019-09-28	8.5
2019-09-29	8.5	

October	2019-10-01	8.5
	2019-10-02	8.5
	2019-10-04	8.5
	2019-10-05	8.5
	2019-10-06	8.5
	2019-10-07	8.5
	2019-10-08	8.5
	2019-10-10	8.5
	2019-10-12	8.5
	2019-10-13	15
	2019-10-14	15
	2019-10-15	8.5
	2019-10-16	8.5
	2019-10-18	15
	2019-10-19	15
	2019-10-20	15
	2019-10-22	8.5
	2019-10-23	15
	2019-10-26	9
	2019-10-28	8.5
2019-10-30	8.5	
2019-10-31	8.5	

November	2019-11-01	8.5
	2019-11-02	15
	2019-11-03	15
	2019-11-04	8.5
	2019-11-05	8.5
	2019-11-06	8.5
	2019-11-09	8.5
	2019-11-10	8.5
	2019-11-11	8.5
	2019-11-12	8.5
	2019-11-13	8.5
	2019-11-14	8.5
	2019-11-20	8.5
	2019-11-21	9
	2019-11-22	15
	2019-11-27	8.5
2019-11-29	15	
2019-11-30	8.5	

December	2019-12-01	8.5
	2019-12-02	8.5
	2019-12-07	8.5
	2019-12-09	8.5
	2019-12-15	8.5
	2019-12-19	15
	2019-12-20	8.5
	2019-12-21	8.5
	2019-12-22	8.5
	2019-12-23	15
	2019-12-25	8.5
	2019-12-26	15
	2019-12-27	8.5
	2019-12-30	15
January	2020-01-05	3.5
March	2020-03-13	8.5
Total		1,409.0

May	2019-05-08	14
	2019-05-09	24
	2019-05-10	3
	2019-05-11	24
	2019-05-12	16
	2019-05-15	14
	2019-05-18	24
	2019-05-19	24
	2019-05-20	2
	2019-05-22	24
	2019-05-23	16
	2019-05-26	24
	2019-05-27	24
	2019-05-28	14
	2019-05-29	14

Roseway Hospital		
Month	Date	Hours closed
April	2019-04-01	14
	2019-04-04	14
	2019-04-05	15
	2019-04-06	15
	2019-04-07	14
	2019-04-16	14
	2019-04-23	14
	2019-04-26	26
	2019-04-27	2

June	2019-06-01	14
	2019-06-07	24
	2019-06-08	24
	2019-06-09	2
	2019-06-14	24
	2019-06-15	16
	2019-06-16	14
	2019-06-17	14
	2019-06-18	14
	2019-06-20	24
	2019-06-21	14
	2019-06-23	14
	2019-06-25	24
	2019-06-26	14
	2019-06-27	24
	2019-06-28	24
	2019-06-29	24
2019-06-30	14	

July	2019-07-01	24
	2019-07-02	2
	2019-07-03	14
	2019-07-04	24
	2019-07-05	2
	2019-07-06	24
	2019-07-07	2
	2019-07-08	24
	2019-07-09	26
	2019-07-10	14
	2019-07-12	24
	2019-07-13	16
	2019-07-19	24
	2019-07-20	14
	2019-07-23	14
	2019-07-25	14
	2019-07-27	12
2019-07-29	24	
2019-07-30	24	
2019-07-31	24	

August	2019-08-01	2
	2019-08-03	24
	2019-08-04	2
	2019-08-05	14
	2019-08-07	24
	2019-08-08	14
	2019-08-11	14
	2019-08-12	24
	2019-08-13	26
	2019-08-14	26
	2019-08-15	2
	2019-08-16	24
	2019-08-17	24
	2019-08-18	2
	2019-08-19	14
	2019-08-20	24
	2019-08-21	2
	2019-08-22	24
	2019-08-23	24
	2019-08-24	24
	2019-08-25	2
	2019-08-26	14
	2019-08-27	14
	2019-08-28	14

September	2019-09-02	14
	2019-09-04	24
	2019-09-05	2
	2019-09-09	20
	2019-09-14	14
	2019-09-17	24
	2019-09-18	2
	2019-09-20	24
	2019-09-21	3
	2019-09-23	14
	2019-09-29	14
	October	2019-10-11
2019-10-12		14
2019-10-13		14
2019-10-17		14
2019-10-18		14
2019-10-19		14
2019-10-25		24
2019-10-26		2
2019-10-29		16
2019-10-31		14

November	2019-11-02	15
	2019-11-04	24
	2019-11-05	2
	2019-11-07	24
	2019-11-08	24
	2019-11-09	2
	2019-11-12	14
	2019-11-15	24
	2019-11-16	2
	2019-11-21	24
	2019-11-22	14
	2019-11-24	14
	2019-11-29	24
	2019-11-30	2
	December	2019-12-04
2019-12-05		2
2019-12-06		24
2019-12-07		2
2019-12-09		24
2019-12-10		2
2019-12-11		24
2019-12-12		20
2019-12-16		14
2019-12-23		24
2019-12-24		24
2019-12-25		24
2019-12-26		17
2019-12-27	16	
2019-12-31	24	

January	2020-01-01	16	
	2020-01-03	24	
	2020-01-04	2	
	2020-01-22	24	
	2020-01-23	16	
	2020-01-31	24	
February	2020-02-01	14	
	2020-02-05	24	
	2020-02-06	18	
	2020-02-09	14	
	2020-02-12	24	
	2020-02-13	24	
	2020-02-14	5	
	2020-02-17	14	
	2020-02-20	14	
	2020-02-25	24	
	2020-02-26	2	
	March	2020-02-29	24
		2020-03-01	2
2020-03-05		24	
2020-03-06		24	
2020-03-07		2	
2020-03-10		24	
2020-03-11		2	
2020-03-13		14	
2020-03-16		24	
2020-03-17		2	
2020-03-23	14		
2020-03-30	6		
Total		2,659.0	

Soldiers Memorial Hospital		
Month	Date	Hours closed
April	2019-04-17	12
	2019-04-18	18
	2019-04-22	18
	2019-04-27	18
	2019-04-29	12
May	2019-05-16	11
June	2019-06-02	12
	2019-06-04	11
	2019-06-08	11
	2019-06-25	18
	2019-06-27	18
	2019-06-29	12
	2019-06-30	12
July	2019-07-01	24
	2019-07-02	3
	2019-07-19	18
	2019-07-23	11
	2019-07-27	12

August	2019-08-16	11
	2019-08-24	18
	2019-08-25	18
September	2019-09-10	11
	2019-09-15	18
	2019-09-28	18
October	2019-10-08	11
	2019-10-17	11
November	2019-11-03	9
	2019-11-19	11
	2019-11-21	18
	2019-11-22	18
	2019-11-25	11
	2019-11-27	11
	2019-11-29	11
December	2019-12-03	11
	2019-12-17	11
	2019-12-20	11
	2019-12-27	11
January	2020-01-02	11
	2020-01-07	18
	2020-01-13	11
	2020-01-21	18
	2020-01-22	11
	2020-01-23	11
	2020-01-27	11
	2020-01-29	11

February	2020-02-03	11
	2020-02-04	11
	2020-02-05	11
	2020-02-14	11
	2020-02-17	11
	2020-02-18	11
	2020-02-22	11
	2020-02-25	18
March	2020-03-02	11
	2020-03-07	11
	2020-03-16	11
	2020-03-21	11
	2020-03-23	11
	2020-03-30	18
Total		770.0

ZONE 2 (NORTHERN)

All Saints Springhill Hospital		
Month	Date	Hours closed
April	2019-04-01	12
	2019-04-02	12
	2019-04-04	12
	2019-04-05	12
	2019-04-08	12
	2019-04-10	12
	2019-04-11	12
	2019-04-12	12
	2019-04-13	12
	2019-04-14	12
	2019-04-16	12
	2019-04-17	12
	2019-04-18	12
	2019-04-20	5
	2019-04-21	12
	2019-04-23	12
	2019-04-24	12
	2019-04-26	12
	2019-04-27	12
2019-04-28	12	
2019-04-29	12	

May	2019-05-01	13
	2019-05-02	12
	2019-05-03	12
	2019-05-06	12
	2019-05-08	12
	2019-05-10	12
	2019-05-11	12
	2019-05-12	13
	2019-05-13	13
	2019-05-14	12
	2019-05-16	12
	2019-05-18	12
	2019-05-19	12
	2019-05-21	12
	2019-05-22	12
	2019-05-23	12
	2019-05-24	12
	2019-05-27	12
	2019-05-28	12
	2019-05-30	12

June	2019-06-07	12
	2019-06-08	2
	2019-06-09	12
	2019-06-11	12
	2019-06-13	12
	2019-06-14	12
	2019-06-20	12
	2019-06-21	12
	2019-06-22	12
	2019-06-23	12
	2019-06-24	10
	2019-06-25	10
	2019-06-26	12
2019-06-27	12	

July	2019-07-01	12
	2019-07-03	13
	2019-07-04	12
	2019-07-05	12
	2019-07-08	13
	2019-07-09	12
	2019-07-11	12
	2019-07-12	13
	2019-07-13	12
	2019-07-15	12
	2019-07-16	12
	2019-07-18	13
	2019-07-19	12
	2019-07-20	24
	2019-07-21	12
	2019-07-22	12
	2019-07-23	12
	2019-07-25	12
	2019-07-27	25
	2019-07-28	12
2019-07-29	12	

August	2019-08-01	12
	2019-08-02	12
	2019-08-03	12
	2019-08-04	12
	2019-08-05	12
	2019-08-06	12
	2019-08-08	12
	2019-08-09	12
	2019-08-12	12
	2019-08-13	12
	2019-08-17	12
	2019-08-19	12
	2019-08-22	12
	2019-08-23	15
	2019-08-24	12
	2019-08-25	12
	2019-08-26	12
	2019-08-28	4
	2019-08-29	12
	2019-08-31	12

September	2019-09-01	12
	2019-09-04	12
	2019-09-05	12
	2019-09-11	12
	2019-09-19	12
	2019-09-20	1.5
	2019-09-21	12
	2019-09-22	12
	2019-09-24	12
	2019-09-25	12
	2019-09-28	24
	2019-09-29	12
October	2019-10-01	12
	2019-10-02	12
	2019-10-03	12
	2019-10-08	12
	2019-10-11	13
	2019-10-12	13
	2019-10-13	12
	2019-10-16	12
	2019-10-21	13
	2019-10-25	11
	2019-10-31	12

November	2019-11-01	12
	2019-11-05	12
	2019-11-16	1
	2019-11-17	12
	2019-11-21	12
	2019-11-22	2
	2019-11-23	5
	2019-11-24	6
	2019-11-25	12
	2019-11-28	12
	2019-11-29	12
	2019-11-30	12
	December	2019-12-01
2019-12-04		2
2019-12-05		1
2019-12-06		13
2019-12-08		12
2019-12-09		2
2019-12-10		12
2019-12-12		24
2019-12-14		2
2019-12-16		12
2019-12-19		12
2019-12-20		12
2019-12-23		2
2019-12-24		7
2019-12-25		13
2019-12-29		4
2019-12-30		22
2019-12-31	2	

January	2020-01-02	2
	2020-01-04	12
	2020-01-05	12
	2020-01-06	12
	2020-01-09	12
	2020-01-10	25
	2020-01-14	12
	2020-01-16	13
	2020-01-17	12
	2020-01-21	6
	2020-01-23	2
	2020-01-26	24
	2020-01-27	4
	2020-01-31	13

February	2020-02-06	12
	2020-02-07	12
	2020-02-09	13
	2020-02-10	12
	2020-02-13	12
	2020-02-14	25
	2020-02-15	2
	2020-02-16	2
	2020-02-18	13
	2020-02-19	15
	2020-02-21	12
	2020-02-22	12
	2020-02-23	1
	2020-02-24	2
	2020-02-25	12
	2020-02-27	12
	2020-02-28	12

March	2020-03-01	12
	2020-03-03	2
	2020-03-05	12
	2020-03-06	2.5
	2020-03-07	12
	2020-03-08	1.5
	2020-03-09	12
	2020-03-10	13
	2020-03-12	5
	2020-03-13	11
	2020-03-16	14
	2020-03-17	13
	2020-03-18	15
	2020-03-19	12
	2020-03-20	12
	2020-03-21	13
	2020-03-22	13
	2020-03-23	5
	2020-03-26	12
	2020-03-28	12
2020-03-29	12	
2020-03-30	12	
2020-03-31	12	
Total		2,295.5

Lillian Fraser Memorial Hospital		
Month	Date	Hours closed
April	2019-04-04	12
	2019-04-05	12
	2019-04-12	12
	2019-04-18	12
	2019-04-19	12
	2019-04-20	12
	2019-04-21	12
	2019-04-22	12
	2019-04-27	4
	2019-04-28	2
May	2019-05-04	12
	2019-05-05	12
	2019-05-18	12
	2019-05-19	12
	2019-05-20	12
	2019-05-25	12
	2019-05-26	12
	2019-05-30	12
2019-05-31	12	
June	2019-06-15	13
	2019-06-16	13
July	2019-07-01	12
	2019-07-03	12
	2019-07-04	10
	2019-07-05	12
	2019-07-16	12
	2019-07-27	5
	2019-07-28	5

August	2019-08-02	12
	2019-08-03	12
	2019-08-04	12
	2019-08-05	12
	2019-08-07	12
	2019-08-09	12
	2019-08-10	12
	2019-08-11	12
	2019-08-15	5
	2019-08-16	5
	2019-08-23	12
	2019-08-24	4
	2019-08-25	4
	2019-08-30	5
	2019-08-31	36
September	2019-09-01	12
	2019-09-02	12
	2019-09-06	12
	2019-09-13	12
	2019-09-19	8
	2019-09-20	12
	2019-09-21	12
	2019-09-24	12
2019-09-26	12	
October	2019-10-03	5
	2019-10-04	5
	2019-10-07	5
	2019-10-10	12
	2019-10-12	12
	2019-10-13	12
	2019-10-18	12
	2019-10-20	12
	2019-10-25	5
	2019-10-31	7

November	2019-11-01	12
	2019-11-11	12
	2019-11-28	12
December	2019-12-20	12
January	2020-01-03	12
	2020-01-17	12
	2020-01-23	8
	2020-01-24	8
February	2020-02-17	8
	2020-02-19	8
	2020-02-21	8
	2020-02-28	8
March	2020-02-29	5
	2020-03-01	5
	2020-03-05	8
	2020-03-06	8
	2020-03-07	8
	2020-03-08	12
	2020-03-12	8
	2020-03-19	8
	2020-03-20	8
	2020-03-21	12
2020-03-22	12	
2020-03-23	8	
Total		884.0

North Cumberland Community Care Centre		
Month	Date	Hours closed
April	2019-04-02	12
	2019-04-03	12
	2019-04-04	12
	2019-04-05	12
	2019-04-06	12
	2019-04-07	12
	2019-04-08	12
	2019-04-09	12
	2019-04-10	12
	2019-04-11	12
	2019-04-12	12
	2019-04-13	12
	2019-04-14	12
	2019-04-16	12
	2019-04-17	12
	2019-04-18	12
	2019-04-21	12
	2019-04-22	12
	2019-04-23	12
	2019-04-24	12
	2019-04-25	12
	2019-04-26	12
	2019-04-27	12
	2019-04-28	12
	2019-04-30	12

May	2019-05-01	12
	2019-05-02	12
	2019-05-03	12
	2019-05-05	12
	2019-05-07	12
	2019-05-08	12
	2019-05-09	12
	2019-05-10	12
	2019-05-12	12
	2019-05-14	12
	2019-05-15	12
	2019-05-16	12
	2019-05-17	12
	2019-05-18	12
	2019-05-19	12
	2019-05-21	12
	2019-05-22	12
	2019-05-23	12
	2019-05-24	12
	2019-05-25	12
	2019-05-26	12
2019-05-28	12	
2019-05-30	12	
2019-05-31	12	

June	2019-06-02	12
	2019-06-03	12
	2019-06-04	12
	2019-06-05	12
	2019-06-06	12
	2019-06-08	12
	2019-06-09	12
	2019-06-10	12
	2019-06-12	12
	2019-06-13	12
	2019-06-14	12
	2019-06-15	4
	2019-06-16	12
	2019-06-18	12
	2019-06-19	12
	2019-06-20	12
	2019-06-21	12
	2019-06-23	12
	2019-06-25	12
	2019-06-26	12
	2019-06-27	12
	2019-06-28	12
	2019-06-29	12
	2019-06-30	12

July	2019-07-01	12
	2019-07-02	12
	2019-07-03	12
	2019-07-04	12
	2019-07-05	12
	2019-07-06	12
	2019-07-07	12
	2019-07-09	12
	2019-07-10	12
	2019-07-11	12
	2019-07-12	12
	2019-07-13	12
	2019-07-14	12
	2019-07-15	12
	2019-07-16	12
	2019-07-17	12
	2019-07-18	12
	2019-07-20	12
	2019-07-23	12
	2019-07-25	12
	2019-07-26	7
	2019-07-27	12
	2019-07-28	12
	2019-07-31	5

August	2019-08-01	12
	2019-08-02	12
	2019-08-04	12
	2019-08-06	12
	2019-08-07	12
	2019-08-08	12
	2019-08-09	12
	2019-08-10	12
	2019-08-11	12
	2019-08-20	12
	2019-08-22	12
	2019-08-23	12
	2019-08-25	12
	2019-08-28	12
	2019-08-29	12
	2019-08-30	12
2019-08-31	12	

September	2019-09-01	12
	2019-09-04	12
	2019-09-07	12
	2019-09-08	12
	2019-09-09	6
	2019-09-11	12
	2019-09-14	12
	2019-09-15	12
	2019-09-17	12
	2019-09-18	12
	2019-09-20	12
	2019-09-21	12
	2019-09-22	12
	2019-09-25	12
2019-09-27	12	
2019-09-29	12	

October	2019-10-01	12
	2019-10-02	12
	2019-10-03	12
	2019-10-04	12
	2019-10-05	12
	2019-10-06	12
	2019-10-07	12
	2019-10-08	12
	2019-10-10	12
	2019-10-11	12
	2019-10-13	12
	2019-10-15	12
	2019-10-16	12
	2019-10-18	12
	2019-10-20	12
	2019-10-21	12
	2019-10-22	12
	2019-10-24	12
	2019-10-27	12
	2019-10-29	12
2019-10-30	12	
2019-10-31	12	

November	2019-11-01	12
	2019-11-02	12
	2019-11-03	6
	2019-11-05	12
	2019-11-06	4
	2019-11-07	12
	2019-11-08	12
	2019-11-09	4
	2019-11-10	12
	2019-11-12	12
	2019-11-13	2
	2019-11-14	12
	2019-11-15	12
	2019-11-17	4
	2019-11-20	12
	2019-11-22	4
	2019-11-23	12
	2019-11-25	8
	2019-11-29	12

December	2019-12-01	12
	2019-12-03	12
	2019-12-04	12
	2019-12-08	12
	2019-12-11	12
	2019-12-12	2
	2019-12-13	2
	2019-12-22	2
	2019-12-24	4
	2019-12-25	12
	2019-12-27	12
	2019-12-31	12

January	2020-01-01	12
	2020-01-02	12
	2020-01-03	12
	2020-01-07	12
	2020-01-08	12
	2020-01-11	2
	2020-01-12	8
	2020-01-13	12
	2020-01-14	12
	2020-01-15	2
	2020-01-16	12
	2020-01-21	12
	2020-01-22	2
	2020-01-23	12
	2020-01-24	12
	2020-01-26	2
	2020-01-27	2
	2020-01-28	2
	2020-01-29	4
	2020-01-31	2
February	2020-02-05	12
	2020-02-06	2
	2020-02-07	2
	2020-02-09	4
	2020-02-10	12
	2020-02-13	12
	2020-02-17	2
	2020-02-18	12
	2020-02-26	12
	2020-02-27	2

March	2020-03-02	1
	2020-03-05	12
	2020-03-12	2
	2020-03-14	12
	2020-03-18	2
	2020-03-19	12
	2020-03-20	12
	2020-03-21	3
	2020-03-22	12
	2020-03-24	12
	2020-03-26	12
Total		2,402.0

South Cumberland Community Care Centre		
Month	Date	Hours closed
April	2019-04-01	12
	2019-04-02	12
	2019-04-03	12
	2019-04-04	12
	2019-04-07	12
	2019-04-08	12
	2019-04-14	12
	2019-04-15	12
	2019-04-16	12
	2019-04-17	12
	2019-04-18	12
	2019-04-21	12
	2019-04-22	12
	2019-04-23	12
	2019-04-24	12
	2019-04-27	12
	2019-04-28	12
2019-04-29	12	
2019-04-30	12	

May	2019-05-01	12
	2019-05-02	12
	2019-05-05	12
	2019-05-06	12
	2019-05-08	3
	2019-05-12	12
	2019-05-13	12
	2019-05-14	12
	2019-05-15	12
	2019-05-16	12
	2019-05-19	12
	2019-05-20	12
	2019-05-21	12
	2019-05-22	12
	2019-05-25	12
	2019-05-26	12
	2019-05-27	12
	2019-05-28	12
	2019-05-29	12

June	2019-06-02	12
	2019-06-09	12
	2019-06-10	12
	2019-06-12	12
	2019-06-13	12
	2019-06-16	12
	2019-06-17	12
	2019-06-18	12
	2019-06-22	12
	2019-06-23	12
	2019-06-24	12
	2019-06-25	12
	2019-06-26	12
	2019-06-30	12

July	2019-07-01	12
	2019-07-07	12
	2019-07-08	12
	2019-07-09	12
	2019-07-10	12
	2019-07-13	12
	2019-07-14	12
	2019-07-15	12
	2019-07-16	12
	2019-07-17	12
	2019-07-18	0.5
	2019-07-19	0.5
	2019-07-20	12
	2019-07-21	12
	2019-07-22	12
	2019-07-23	12
	2019-07-24	12
	2019-07-25	12
	2019-07-28	12
	2019-07-29	12

August	2019-08-04	12
	2019-08-05	12
	2019-08-06	12
	2019-08-07	12
	2019-08-08	12
	2019-08-11	12
	2019-08-12	12
	2019-08-13	12
	2019-08-17	2
	2019-08-18	12
	2019-08-19	12
	2019-08-20	12
	2019-08-21	12
	2019-08-24	12
	2019-08-25	12
	2019-08-26	12
	2019-08-28	1.5
2019-08-31	12	

September	2019-09-02	12
	2019-09-03	12
	2019-09-04	12
	2019-09-05	12
	2019-09-08	12
	2019-09-09	12
	2019-09-10	12
	2019-09-11	12
	2019-09-15	12
	2019-09-16	12
	2019-09-17	12
	2019-09-18	12
	2019-09-19	12
	2019-09-20	12
	2019-09-21	12
	2019-09-22	12
	2019-09-23	12
	2019-09-27	12
	2019-09-28	12
	2019-09-29	12
2019-09-30	12	

October	2019-10-01	12
	2019-10-02	12
	2019-10-03	12
	2019-10-07	12
	2019-10-08	12
	2019-10-09	12
	2019-10-20	3
	2019-10-21	12
	2019-10-27	12
	2019-10-28	12
	2019-10-29	4
	2019-10-30	12
	2019-10-31	4

November	2019-11-01	12
	2019-11-03	12
	2019-11-04	12
	2019-11-05	12
	2019-11-06	12
	2019-11-10	12
	2019-11-11	12
	2019-11-12	12
	2019-11-13	12
	2019-11-14	12
	2019-11-17	12
	2019-11-18	12
	2019-11-23	12
	2019-11-24	12
	2019-11-25	12
	2019-11-26	12
	2019-11-27	12
	2019-11-28	4

December	2019-12-02	12
	2019-12-03	12
	2019-12-04	12
	2019-12-07	12
	2019-12-08	12
	2019-12-09	12
	2019-12-10	12
	2019-12-11	12
	2019-12-14	12
	2019-12-15	12
	2019-12-16	12
	2019-12-23	12
	2019-12-24	24
	2019-12-25	12
	2019-12-26	12
2019-12-27	12	

January	2020-01-04	12	
	2020-01-05	12	
	2020-01-06	12	
	2020-01-07	12	
	2020-01-08	12	
	2020-01-09	4	
	2020-01-12	12	
	2020-01-13	12	
	2020-01-19	12	
	2020-01-20	12	
	2020-01-21	12	
	2020-01-22	12	
	2020-01-26	12	
	2020-01-27	12	
	2020-01-28	12	
	2020-01-29	4	
	February	2020-02-02	12
		2020-02-03	12
		2020-02-04	12
2020-02-05		12	
2020-02-08		12	
2020-02-09		12	
2020-02-10		12	
2020-02-16		12	
2020-02-17		12	
2020-02-21		3	
2020-02-24		12	
2020-02-25	12		
2020-02-26	12		

February	2020-03-02	12
	2020-03-03	12
	2020-03-04	12
	2020-03-05	12
	2020-03-09	12
	2020-03-15	4
	2020-03-16	12
	2020-03-17	12
	2020-03-18	12
	2020-03-19	4
Total		2,249.5

ZONE 3 (EASTERN)

Eastern Memorial Hospital		
Month	Date	Hours closed
May	2019-05-10	24
	2019-05-11	24
	2019-05-12	37
	2019-05-13	37
	2019-05-14	37
	2019-05-15	37
	2019-05-16	37
	2019-05-17	37
	2019-05-18	37
	2019-05-19	13
	2019-05-20	13
	2019-05-21	13
	2019-05-22	13
	2019-05-23	13
	2019-05-24	13
	2019-05-25	13
	2019-05-26	13
	2019-05-27	13
	2019-05-28	13
	2019-05-29	13
	2019-05-30	13
2019-05-31	13	

Glace Bay Health Care Facility		
Month	Date	Hours closed
April	2019-04-02	24
	2019-04-03	24
	2019-04-04	24
	2019-04-05	24
	2019-04-06	24
	2019-04-07	24
	2019-04-08	15
	2019-04-09	24
	2019-04-10	24
	2019-04-11	24
	2019-04-12	24
	2019-04-13	24
	2019-04-14	15
	2019-04-15	15
	May	2019-05-29
2019-05-30		24
2019-05-31		24

June	2019-06-01	24
	2019-06-02	15
	2019-06-03	15
	2019-06-04	24
	2019-06-05	24
	2019-06-06	15
	2019-06-07	24
	2019-06-08	24
	2019-06-09	24
	2019-06-10	24
	2019-06-11	24
	2019-06-12	24
	2019-06-13	24
	2019-06-14	24
	2019-06-15	24
	2019-06-16	24
	2019-06-17	24
	2019-06-18	24
	2019-06-19	15

September	2019-09-03	15
	2019-09-04	24
	2019-09-05	24
	2019-09-06	24
	2019-09-07	24
	2019-09-08	24
	2019-09-09	24
	2019-09-10	15
	2019-09-11	24
	2019-09-12	24
	2019-09-13	24
	2019-09-14	24
	2019-09-15	24
	2019-09-16	24
	2019-09-17	15
	2019-09-18	15
	2019-09-19	15
	2019-09-20	24
	2019-09-21	24
	2019-09-22	15
	2019-09-23	15
	2019-09-24	15
	2019-09-25	15
	2019-09-26	24
	2019-09-27	24
	2019-09-28	24
	2019-09-29	24
	2019-09-30	15

October	2019-10-01	24
	2019-10-02	24
	2019-10-03	24
	2019-10-04	24
	2019-10-05	24
	2019-10-06	24
	2019-10-07	15
	2019-10-08	15
	2019-10-09	15
	2019-10-10	15
	2019-10-11	24
	2019-10-12	24
	2019-10-13	24
	2019-10-14	15
	2019-10-15	15
	2019-10-16	15
	2019-10-17	15
	2019-10-18	15
	2019-10-19	24
	2019-10-20	15
	2019-10-21	15
	2019-10-22	15
	2019-10-23	15
	2019-10-24	15
	2019-10-25	24
	2019-10-26	24
	2019-10-27	15
	2019-10-28	15
	2019-10-29	15
	2019-10-30	15
	2019-10-31	15

November	2019-11-01	24
	2019-11-02	24
	2019-11-03	24
	2019-11-04	15
	2019-11-05	15
	2019-11-06	15
	2019-11-07	15
	2019-11-08	15
	2019-11-09	24
	2019-11-10	24
	2019-11-11	15
	2019-11-15	24
	2019-11-16	24
	2019-11-17	24
	2019-11-22	24
	2019-11-23	24
	2019-11-24	24
	2019-11-29	24
	2019-11-30	24

December	2019-12-01	15
	2019-12-02	15
	2019-12-03	15
	2019-12-04	15
	2019-12-05	15
	2019-12-06	24
	2019-12-07	24
	2019-12-08	24
	2019-12-09	15
	2019-12-10	15
	2019-12-12	15
	2019-12-13	15
	2019-12-14	24
	2019-12-15	15
	2019-12-17	15
	2019-12-18	15
	2019-12-19	15
	2019-12-20	15
	2019-12-21	15
	2019-12-22	24
	2019-12-23	24
	2019-12-24	24
	2019-12-25	15
	2019-12-26	24
	2019-12-27	24
	2019-12-28	24
	2019-12-29	24
	2019-12-30	24
	2019-12-31	24

January	2020-01-01	15
	2020-01-02	24
	2020-01-03	24
	2020-01-04	24
	2020-01-05	24
	2020-01-06	15
	2020-01-07	15
	2020-01-08	15
	2020-01-09	15
	2020-01-10	24
	2020-01-11	24
	2020-01-12	15
	2020-01-13	15
	2020-01-14	15
	2020-01-15	24
	2020-01-16	15
	2020-01-17	24
	2020-01-18	24
	2020-01-19	15
	2020-01-20	15
	2020-01-21	15
	2020-01-22	24
	2020-01-23	24
	2020-01-24	15
	2020-01-25	24
	2020-01-26	15
	2020-01-27	15
	2020-01-28	24
	2020-01-29	24
	2020-01-30	15
	2020-01-31	24

February	2020-02-01	24
	2020-02-02	24
	2020-02-03	15
	2020-02-04	15
	2020-02-05	24
	2020-02-06	15
	2020-02-07	24
	2020-02-08	24
	2020-02-09	15
	2020-02-10	24
	2020-02-11	15
	2020-02-12	15
	2020-02-15	11
	2020-02-16	11
	March	2020-03-01
2020-03-06		11
2020-03-07		11
2020-03-08		11
2020-03-11		11
2020-03-15		11
2020-03-17		11
2020-03-20		11
2020-03-21		11
2020-03-22		11
2020-03-23		11
2020-03-24		11
2020-03-29	11	
2020-03-30	11	
Total		3,911.0

Guysborough Memorial Hospital		
Month	Date	Hours closed
August	2019-08-20	24
	2019-08-21	24
	2019-08-22	24
	2019-08-23	24
	2019-08-24	18
	2019-08-25	24
	2019-08-26	24
	2019-08-27	24
	2019-08-28	24
	2019-08-29	24
	2019-08-30	16
	2019-08-31	16
Total		266.0

New Waterford Consolidated Hospital		
Month	Date	Hours closed
April	2019-04-06	9
	2019-04-13	9
	2019-04-19	9
	2019-04-20	9
	2019-04-27	9
May	2019-05-03	9
	2019-05-04	9
	2019-05-11	9
	2019-05-14	9
	2019-05-18	9
	2019-05-22	9
	2019-05-28	9
	2019-05-31	9

June	2019-06-01	9
	2019-06-04	9
	2019-06-07	9
	2019-06-08	9
	2019-06-14	4
	2019-06-15	9
	2019-06-22	9
	2019-06-26	4
	2019-06-28	9
	2019-06-29	9
July	2019-07-06	9
	2019-07-12	9
	2019-07-13	9
	2019-07-19	9
	2019-07-20	9
	2019-07-27	9
August	2019-08-03	9
	2019-08-07	9
	2019-08-09	9
	2019-08-10	9
	2019-08-13	9
	2019-08-16	4
	2019-08-17	9
	2019-08-21	9
	2019-08-23	4
	2019-08-24	9
	2019-08-31	9

September	2019-09-14	9
	2019-09-20	9
	2019-09-28	9
October	2019-10-05	9
	2019-10-08	9
	2019-10-09	9
	2019-10-10	9
	2019-10-11	9
	2019-10-12	9
	2019-10-15	9
	2019-10-16	9
	2019-10-17	9
	2019-10-18	9
	2019-10-19	9
	2019-10-22	9
	2019-10-23	9
	2019-10-24	9
	2019-10-25	9
2019-10-26	9	
2019-10-29	9	
2019-10-30	9	
2019-10-31	9	
Total		538.0

Northside General Hospital		
Month	Date	Hours closed
April	2019-04-01	8
	2019-04-03	8
	2019-04-05	8
	2019-04-06	8
	2019-04-07	8
	2019-04-08	8
	2019-04-12	8
	2019-04-13	8
	2019-04-14	8
	2019-04-15	8
	2019-04-19	8
	2019-04-20	8
	2019-04-21	8
	2019-04-22	8
	2019-04-24	8
	2019-04-26	8
	2019-04-27	8
	2019-04-28	8
	2019-04-29	8
	2019-04-30	8

May	2019-05-04	8
	2019-05-05	9
	2019-05-06	8
	2019-05-07	8
	2019-05-11	8
	2019-05-12	8
	2019-05-13	8
	2019-05-14	8
	2019-05-18	8
	2019-05-19	8
	2019-05-20	8
	2019-05-21	8
	2019-05-22	8
	2019-05-24	8
	2019-05-25	8
	2019-05-26	8
	2019-05-27	8
	2019-05-28	8
	2019-05-29	8
2019-05-31	8	

June	2019-06-01	8
	2019-06-02	8
	2019-06-05	8
	2019-06-07	8
	2019-06-08	8
	2019-06-09	8
	2019-06-10	8
	2019-06-11	8
	2019-06-12	8
	2019-06-14	8
	2019-06-15	8
	2019-06-16	8
	2019-06-17	8
	2019-06-18	8
	2019-06-21	8
	2019-06-22	8
	2019-06-23	8
	2019-06-24	8
	2019-06-25	8
	2019-06-28	4
2019-06-29	8	
2019-06-30	8	

July	2019-07-01	8
	2019-07-02	8
	2019-07-03	8
	2019-07-05	8
	2019-07-06	8
	2019-07-07	8
	2019-07-08	8
	2019-07-09	8
	2019-07-10	8
	2019-07-12	8
	2019-07-13	8
	2019-07-14	8
	2019-07-15	8
	2019-07-16	8
	2019-07-17	8
	2019-07-19	8
	2019-07-20	8
	2019-07-21	8
	2019-07-22	8
	2019-07-23	8
	2019-07-24	8
	2019-07-26	8
	2019-07-27	8
	2019-07-28	8
	2019-07-29	8
	2019-07-30	8
	2019-07-31	8

August	2019-08-02	8
	2019-08-03	8
	2019-08-04	8
	2019-08-05	8
	2019-08-06	8
	2019-08-09	8
	2019-08-10	8
	2019-08-11	8
	2019-08-12	8
	2019-08-13	8
	2019-08-14	8
	2019-08-15	8
	2019-08-16	8
	2019-08-17	8
	2019-08-18	8
	2019-08-19	8
	2019-08-20	8
	2019-08-21	8
	2019-08-22	8
	2019-08-23	8
	2019-08-24	8
	2019-08-25	8
	2019-08-26	8
	2019-08-27	8
	2019-08-31	8

September	2019-09-01	8
	2019-09-02	8
	2019-09-03	8
	2019-09-04	8
	2019-09-06	8
	2019-09-07	8
	2019-09-08	8
	2019-09-09	8
	2019-09-10	8
	2019-09-13	8
	2019-09-14	8
	2019-09-15	8
	2019-09-16	8
	2019-09-17	8
	2019-09-20	8
	2019-09-21	8
	2019-09-22	8
	2019-09-23	8
	2019-09-24	8
	2019-09-27	8
2019-09-28	8	
2019-09-29	8	

October	2019-10-04	8
	2019-10-05	8
	2019-10-06	8
	2019-10-07	8
	2019-10-11	8
	2019-10-13	8
	2019-10-14	8
	2019-10-18	8
	2019-10-19	8
	2019-10-20	8
	2019-10-21	8
	2019-10-22	8
	2019-10-23	8
	2019-10-25	8
	2019-10-26	8
	2019-10-27	8
	2019-10-28	8
	2019-10-29	8
2019-10-30	8	

November	2019-11-01	8
	2019-11-02	8
	2019-11-03	8
	2019-11-04	8
	2019-11-06	8
	2019-11-08	8
	2019-11-09	8
	2019-11-10	8
	2019-11-11	8
	2019-11-12	8
	2019-11-15	8
	2019-11-16	8
	2019-11-17	8
	2019-11-18	8
	2019-11-20	8
	2019-11-22	8
	2019-11-23	8
	2019-11-24	8
2019-11-25	8	
2019-11-30	8	

December	2019-12-01	8
	2019-12-07	8
	2019-12-08	8
	2019-12-09	8
	2019-12-10	8
	2019-12-13	8
	2019-12-14	8
	2019-12-15	8
	2019-12-16	8
	2019-12-17	8
	2019-12-18	8
	2019-12-20	8
	2019-12-21	8
	2019-12-22	8
	2019-12-23	8
	2019-12-24	8
	2019-12-25	8
	2019-12-26	8
	2019-12-28	8
	2019-12-29	8
2019-12-30	8	
2019-12-31	8	

January	2020-01-01	8
	2020-01-03	8
	2020-01-04	8
	2020-01-05	8
	2020-01-06	8
	2020-01-07	8
	2020-01-08	8
	2020-01-10	8
	2020-01-11	8
	2020-01-12	8
	2020-01-13	8
	2020-01-14	8
	2020-01-15	8
	2020-01-17	8
	2020-01-18	8
	2020-01-19	8
	2020-01-20	8
	2020-01-21	8
	2020-01-22	8
	2020-01-24	8
2020-01-25	8	
2020-01-26	8	
2020-01-27	8	
2020-01-28	8	
2020-01-29	8	
2020-01-31	8	

February	2020-02-01	8
	2020-02-02	8
	2020-02-03	8
	2020-02-04	8
	2020-02-05	8
	2020-02-06	8
	2020-02-07	8
	2020-02-08	8
	2020-02-09	8
	2020-02-10	8
	2020-02-11	8
	2020-02-12	8
	2020-02-14	8
	2020-02-15	8
	2020-02-16	8
	2020-02-17	8
	2020-02-19	8
	2020-02-21	8
	2020-02-22	8
	2020-02-23	8

March	2020-02-29	8
	2020-03-01	8
	2020-03-02	8
	2020-03-03	8
	2020-03-04	8
	2020-03-06	8
	2020-03-07	8
	2020-03-08	8
	2020-03-09	8
	2020-03-10	8
	2020-03-11	8
	2020-03-13	8
	2020-03-14	8
	2020-03-15	8
	2020-03-16	8
	2020-03-17	8
	2020-03-18	8
	2020-03-20	8
	2020-03-21	8
	2020-03-22	8
2020-03-23	8	
2020-03-24	8	
2020-03-25	8	
Total		2,125.0

St. Anne Community & Nursing Care Centre		
Month	Date	Hours closed
April	2019-04-06	12
	2019-04-24	12
May	2019-05-25	3
	2019-05-29	4
June	2019-06-07	12
	2019-06-17	4

July	2019-07-01	13
	2019-07-07	8
	2019-07-13	12
	2019-07-14	13
	2019-07-21	8
	2019-07-28	16
	2019-07-30	8
August	2019-08-04	8
	2019-08-08	24
	2019-08-09	24
	2019-08-10	24
	2019-08-11	13
	2019-08-18	8
	2019-08-19	12
	2019-08-25	8
	2019-08-29	12
	2019-08-31	12
September	2019-09-01	19
	2019-09-06	12
	2019-09-07	12
	2019-09-08	12
	2019-09-13	12
	2019-09-14	12
	2019-09-15	12
	2019-09-16	12
	2019-09-29	24

October	2019-10-03	12
	2019-10-04	12
	2019-10-05	12
	2019-10-06	12
	2019-10-10	12
	2019-10-11	12
	2019-10-13	12
	2019-10-14	12
	2019-10-23	12
	2019-10-24	12
	2019-10-25	12
	2019-10-27	24
	2019-10-28	12
	2019-10-29	12
	2019-10-30	12
	2019-10-31	12
November	2019-11-01	12
	2019-11-16	12
	2019-11-22	12
	2019-11-23	14
	2019-11-27	12

December	2019-12-06	12
	2019-12-07	12
	2019-12-08	12
	2019-12-13	12
	2019-12-14	12
	2019-12-15	12
	2019-12-20	12
	2019-12-21	12
	2019-12-22	12
	2019-12-23	7
	2019-12-24	24
	2019-12-25	24
	2019-12-26	24
	2019-12-27	12
	2019-12-28	12
	2019-12-29	24
2019-12-31	17	

January	2020-01-01	31
	2020-01-03	12
	2020-01-04	12
	2020-01-05	12
	2020-01-10	24
	2020-01-11	12
	2020-01-12	12
	2020-01-13	12
	2020-01-14	12
	2020-01-15	12
	2020-01-17	24
	2020-01-18	12
	2020-01-19	12
	2020-01-24	24
	2020-01-25	12
	2020-01-26	12
2020-01-31	24	
February	2020-02-01	12
	2020-02-02	12
	2020-02-03	12
	2020-02-14	24
	2020-02-15	24
	2020-02-16	12
	2020-02-21	24
	2020-02-22	12
	2020-02-23	12
	2020-02-28	24

March	2020-02-29	12
	2020-03-01	12
	2020-03-02	12
	2020-03-06	24
	2020-03-07	12
	2020-03-08	12
	2020-03-09	8
	2020-03-10	8
	2020-03-11	12
	2020-03-12	12
	2020-03-13	24
	2020-03-14	12
	2020-03-20	24
	2020-03-21	12
	2020-03-22	12
	2020-03-27	24
	2020-03-28	12
	2020-03-29	12
	2020-03-31	5
Total	1,615.0	

Strait Richmond Hospital			
Month	Date	Hours closed	
April	2019-04-03	24	
	2019-04-04	1	
	2019-04-15	24	
	2019-04-16	1	
	2019-04-17	24	
	2019-04-18	1	
	2019-04-20	24	
	2019-04-21	24	
	2019-04-22	1	
	2019-04-24	24	
	2019-04-25	1	
	May	2019-05-15	24
		2019-05-16	1
2019-05-18		4	
2019-05-22		24	
2019-05-23		1	
2019-05-29		24	
2019-05-30		1	

June	2019-06-01	24
	2019-06-02	24
	2019-06-03	1
	2019-06-05	24
	2019-06-06	1
	2019-06-08	24
	2019-06-09	24
	2019-06-10	1
	2019-06-12	24
	2019-06-13	1
	2019-06-22	24
	2019-06-23	24
	2019-06-24	1
	2019-06-26	24
	2019-06-27	1
July	2019-07-03	24
	2019-07-04	1
	2019-07-06	24
	2019-07-07	24
	2019-07-08	1
	2019-07-20	24
	2019-07-21	24
	2019-07-22	1
	2019-07-24	24
	2019-07-25	1
	2019-07-27	24
2019-07-28	24	
2019-07-29	1	
2019-07-31	24	

August	2019-08-01	1
	2019-08-03	24
	2019-08-04	24
	2019-08-05	24
	2019-08-06	24
	2019-08-07	24
	2019-08-08	24
	2019-08-09	24
	2019-08-10	24
	2019-08-11	13
	2019-08-17	24
	2019-08-18	24
	2019-08-19	1
	2019-08-21	24
	2019-08-22	1
	2019-08-24	24
	2019-08-25	24
	2019-08-26	1
	2019-08-28	24
	2019-08-29	1
2019-08-31	24	
September	2019-09-01	24
	2019-09-02	1
	2019-09-07	24
	2019-09-08	24
	2019-09-09	1
	2019-09-11	24
2019-09-12	1	

October	2019-10-02	24
	2019-10-03	2
	2019-10-09	24
	2019-10-10	2
	2019-10-16	24
	2019-10-17	2
	2019-10-19	24
	2019-10-20	24
	2019-10-21	2
	2019-10-23	24
	2019-10-24	2
	2019-10-26	24
	2019-10-27	24
	2019-10-28	2
November	2019-11-16	24
	2019-11-17	24
	2019-11-18	2
	2019-11-21	24
	2019-11-22	24
	2019-11-23	2
	2019-11-27	24
	2019-11-28	2
2019-11-30	24	

December	2019-12-01	24
	2019-12-02	2
	2019-12-04	24
	2019-12-05	2
	2019-12-07	24
	2019-12-08	24
	2019-12-09	2
	2019-12-11	24
	2019-12-12	2
	2019-12-14	24
	2019-12-15	24
	2019-12-16	2
	January	2020-01-01
2020-01-02		2
2020-01-04		24
2020-01-05		24
2020-01-06		6
2020-01-08		24
2020-01-09		2
2020-01-11		24
2020-01-12		24
2020-01-13		2
2020-01-15	24	
2020-01-16	2	
February	2020-02-01	24
	2020-02-02	24
	2020-02-03	2
	2020-02-05	24
	2020-02-06	2
	2020-02-08	24
	2020-02-09	24
	2020-02-10	2

March	2020-02-29	24
	2020-03-01	24
	2020-03-02	2
	2020-03-14	24
	2020-03-15	24
	2020-03-16	2
	2020-03-18	24
	2020-03-19	2
	2020-03-21	24
	2020-03-22	24
	2020-03-23	2
Total		2,164.0

Victoria County Memorial Hospital		
Month	Date	Hours closed
April	2019-04-25	24
	2019-04-26	1
June	2019-06-13	12
	2019-06-20	12
	2019-06-27	24
	2019-06-28	24
	2019-06-29	17
	2019-06-30	17
July	2019-07-01	24
	2019-07-02	13
	2019-07-06	16
	2019-07-08	12
	2019-07-19	16
	2019-07-21	16
	2019-07-26	16
	2019-07-27	16
	2019-07-28	16

August	2019-08-02	14
	2019-08-04	24
	2019-08-05	14
	2019-08-08	24
	2019-08-12	16
	2019-08-16	16
	2019-08-17	16
	2019-08-18	16
	2019-08-22	16
	2019-08-23	16
	2019-08-24	16
	2019-08-25	16
	2019-08-26	14
	2019-08-30	16
2019-08-31	24	
September	2019-09-01	14
	2019-09-02	16
	2019-09-06	16
	2019-09-07	16
	2019-09-10	14
	2019-09-13	24
	2019-09-14	24
	2019-09-15	24
	2019-09-16	14
	2019-09-27	16
2019-09-28	16	
2019-09-29	16	
2019-09-30	14	

October	2019-10-04	16
	2019-10-05	16
	2019-10-08	14
	2019-10-14	16
	2019-10-18	24
	2019-10-19	14
	2019-10-20	14
	2019-10-24	14
	2019-10-26	24
	2019-10-27	24
	2019-10-28	2
November	2019-11-01	16
	2019-11-02	16
	2019-11-03	16
	2019-11-04	16
	2019-11-08	14
	2019-11-22	16
	2019-11-23	16
	2019-11-24	16
December	2019-12-01	14
	2019-12-03	14
	2019-12-06	16
	2019-12-07	16
	2019-12-08	16
	2019-12-12	14
	2019-12-20	14
	2019-12-25	14
	2019-12-28	14
	2019-12-31	16

January	2020-01-01	16
	2020-01-03	16
	2020-01-04	16
	2020-01-05	16
	2020-01-09	14
	2020-01-14	16
	2020-01-17	14
	2020-01-19	14
	2020-01-28	14
	2020-01-31	16
	February	2020-02-01
2020-02-02		16
2020-02-06		14
2020-02-15		15.5
2020-02-16		14
2020-02-20		14
2020-02-25		14
February	2020-02-29	16
	2020-03-02	14
	2020-03-07	14
	2020-03-12	14
	2020-03-19	14
	2020-03-21	14
	2020-03-24	14
2020-03-28	14	
Total		1,579.5

ZONE 4 (CENTRAL)

Cobequid Community Health Centre		
Month	Date	Hours closed
April	2020-01-22	4.5
Total		4.5

Eastern Shore Memorial Hospital		
Month	Date	Hours closed
April	2019-04-01	24
	2019-04-04	24
	2019-04-08	24
	2019-04-11	24
	2019-04-15	24
	2019-04-17	24
	2019-04-18	24
	2019-04-22	24
	2019-04-23	24
	2019-04-29	24
May	2019-05-02	24
	2019-05-06	24
	2019-05-07	24
	2019-05-13	24
	2019-05-18	24
	2019-05-19	10
	2019-05-21	24
	2019-05-27	24
	2019-05-30	24

June	2019-06-02	24
	2019-06-03	24
	2019-06-04	2
	2019-06-06	24
	2019-06-11	24
	2019-06-13	24
	2019-06-16	24
	2019-06-17	24
	2019-06-19	24
	2019-06-22	24
	2019-06-23	24
	2019-06-24	14
	2019-06-26	24
	2019-06-28	24
2019-06-29	24	
2019-06-30	24	

July	2019-07-01	24
	2019-07-03	24
	2019-07-04	24
	2019-07-05	24
	2019-07-06	24
	2019-07-07	24
	2019-07-08	24
	2019-07-09	16
	2019-07-11	11
	2019-07-14	8
	2019-07-15	24
	2019-07-16	24
	2019-07-20	12
	2019-07-22	24
	2019-07-23	12
	2019-07-25	24
	2019-07-26	24
	2019-07-27	24
	2019-07-28	24
	2019-07-29	24

August	2019-08-01	24
	2019-08-02	24
	2019-08-03	24
	2019-08-04	24
	2019-08-05	24
	2019-08-08	24
	2019-08-12	24
	2019-08-13	24
	2019-08-19	24
	2019-08-20	12
	2019-08-21	12
	2019-08-22	24
	2019-08-23	24
	2019-08-24	24
	2019-08-25	24
	2019-08-26	24
	2019-08-27	24
	2019-08-30	24
	2019-08-31	24
	September	2019-09-01
2019-09-02		24
2019-09-03		8
2019-09-05		24
2019-09-09		24
2019-09-12		24
2019-09-16		24
2019-09-17		24
2019-09-26		24
2019-09-29		12.5
2019-09-30	24	

Ocober	2019-10-03	24	January	2020-01-01	24
	2019-10-04	12		2020-01-03	24
	2019-10-10	24		2020-01-04	24
	2019-10-11	24		2020-01-05	24
	2019-10-12	24		2020-01-15	24
	2019-10-13	24		2020-01-17	24
	2019-10-14	24		2020-01-20	24
	2019-10-15	11		2020-01-22	24
	2019-10-19	12		2020-01-24	24
	2019-10-25	24		2020-01-25	24
	2019-10-28	24		2020-01-26	24
	2019-10-29	24		2020-01-29	24
	2019-10-31	24		2020-01-30	24
November	2019-11-04	24	2020-01-31	24	
	2019-11-05	24	February	2020-02-01	24
	2019-11-08	24		2020-02-02	24
	2019-11-09	24		2020-02-06	24
	2019-11-10	24		2020-02-14	24
	2019-11-11	24		2020-02-18	24
	2019-11-22	24		2020-02-28	24
	2019-11-25	24		March	2020-02-29
December	2019-12-05	24			2020-03-01
	2019-12-06	24	2020-03-13		24
	2019-12-07	24	2020-03-19		24
	2019-12-08	24	2020-03-27		24
	2019-12-19	24	2020-03-28		24
	2019-12-23	24	2020-03-29		24
	2019-12-24	24	2020-03-30		24
	2019-12-25	24	2020-03-31	16	
	2019-12-31	24	Total	3,252.5	

Hants Community Hospital		
Month	Date	Hours closed
April	2020-03-16	15.5
	2020-03-19	10
Total		25.5

Musquodoboit Valley Memorial Hospital		
Month	Date	Hours closed
April	2019-04-01	12
	2019-04-05	12
	2019-04-06	12
	2019-04-07	12
	2019-04-10	3
	2019-04-11	12
	2019-04-12	12
	2019-04-13	12
	2019-04-14	12
	2019-04-17	12
	2019-04-19	3
	2019-04-20	12
	2019-04-21	12
	2019-04-22	12
	2019-04-24	3
	2019-04-25	12
	2019-04-26	12
	2019-04-27	12
	2019-04-28	12

May	2019-05-01	12
	2019-05-02	12
	2019-05-03	12
	2019-05-04	12
	2019-05-10	12
	2019-05-11	12
	2019-05-16	12
	2019-05-17	12
	2019-05-18	12
	2019-05-22	12
	2019-05-24	12
	2019-05-25	12
	2019-05-30	12
June	2019-06-01	12
	2019-06-05	12
	2019-06-06	12
	2019-06-08	12
	2019-06-15	12
	2019-06-17	12
	2019-06-19	12
	2019-06-24	12
	2019-06-28	12
	2019-06-29	12

July	2019-07-01	12
	2019-07-02	12
	2019-07-03	12
	2019-07-04	12
	2019-07-07	12
	2019-07-08	12
	2019-07-09	12
	2019-07-12	12
	2019-07-15	12
	2019-07-19	12
	2019-07-22	12
	2019-07-24	12
	2019-07-25	12
	2019-07-26	12
	2019-07-29	12
	2019-07-30	12
2019-07-31	12	
August	2019-08-01	12
	2019-08-02	12
	2019-08-07	12
	2019-08-09	12
	2019-08-12	12
	2019-08-13	12
	2019-08-14	12
	2019-08-15	12
	2019-08-16	12
	2019-08-19	12
	2019-08-21	12
	2019-08-23	12
	2019-08-26	12
	2019-08-28	12
2019-08-29	12	
2019-08-30	12	

September	2019-09-03	12
	2019-09-04	12
	2019-09-05	12
	2019-09-06	12
	2019-09-11	12
	2019-09-13	12
	2019-09-16	12
	2019-09-18	12
	2019-09-20	12
	2019-09-23	12
	2019-09-25	12
	2019-09-26	2.5
	2019-09-27	12
2019-09-30	12	
October	2019-10-02	12
	2019-10-04	12
	2019-10-07	12
	2019-10-09	12
	2019-10-10	4.5
	2019-10-12	12
	2019-10-16	12
	2019-10-23	12
	2019-10-24	12
	2019-10-25	12
2019-10-28	12	
2019-10-30	12	
2019-10-31	6	

November	2019-11-01	12
	2019-11-04	12
	2019-11-08	12
	2019-11-11	12
	2019-11-13	12
	2019-11-14	12
	2019-11-15	12
	2019-11-18	12
	2019-11-20	12
	2019-11-22	12
	2019-11-25	12
	2019-11-27	12
	2019-11-28	12
	2019-11-29	12
December	2019-12-01	12
	2019-12-02	12
	2019-12-03	12
	2019-12-04	12
	2019-12-05	12
	2019-12-06	12
	2019-12-08	12
	2019-12-09	12
	2019-12-13	12
	2019-12-16	12
	2019-12-19	12
	2019-12-20	12
	2019-12-23	12
	2019-12-24	12
	2019-12-25	12
2019-12-26	12	
2019-12-30	12	
2019-12-31	2	

January	2020-01-01	12
	2020-01-02	12
	2020-01-06	12
	2020-01-09	12
	2020-01-10	12
	2020-01-13	12
	2020-01-16	12
	2020-01-17	12
	2020-01-20	12
	2020-01-22	12
	2020-01-24	12
	2020-01-27	12
	2020-01-29	12
	2020-01-30	12
2020-01-31	12	
February	2020-02-03	12
	2020-02-05	12
	2020-02-06	12
	2020-02-07	12
	2020-02-10	12
	2020-02-12	12
	2020-02-14	12
	2020-02-17	12
	2020-02-19	12
	2020-02-20	12
	2020-02-21	1
	2020-02-24	12
2020-02-26	12	
2020-02-27	12	
2020-02-28	12	

March	2020-03-05	12
	2020-03-06	12
	2020-03-09	12
	2020-03-11	12
	2020-03-12	12
	2020-03-13	12
	2020-03-16	12
	2020-03-17	12
	2020-03-18	12
	2020-03-19	12
	2020-03-20	12
	2020-03-23	12
	2020-03-25	12
	2020-03-26	12
	2020-03-27	12
	2020-03-30	12
Total		2,089.0

Twin Oaks Memorial Hospital		
Month	Date	Hours closed
April	2019-04-08	12.5
	2019-04-11	13
	2019-04-12	5
	2019-04-16	0.5
	2019-04-17	2.5
	2019-04-26	7.5
	2019-04-27	11

May	2019-05-04	12.5
	2019-05-07	14
	2019-05-09	4.5
	2019-05-12	1
	2019-05-15	12.5
	2019-05-18	8
	2019-05-29	4
	2019-05-31	24
June	2019-06-04	4.5
	2019-06-11	24
	2019-06-12	8
	2019-06-17	4.5
	2019-06-29	12
	2019-06-30	5
July	2019-07-05	12
	2019-07-07	12
	2019-07-11	12
	2019-07-19	24
	2019-07-20	24
	2019-07-21	24
	2019-07-22	24
	2019-07-23	24
	2019-07-24	24
2019-07-25	4	
August	2019-08-03	4
	2019-08-10	17
	2019-08-24	1.5
	2019-08-31	12
September	2019-09-09	12
October	2019-10-02	12
	2019-10-03	12
	2019-10-13	13
	2019-10-25	2

November	2019-11-05	12
	2019-11-18	12
	2019-11-21	12
	2019-11-23	12
	2019-11-28	12
December	2019-12-28	3
February	2020-02-20	12
	2020-02-23	8
March	2020-03-16	12
	2020-03-21	12
Total		567.0

© Crown copyright, Province of Nova Scotia, 2020
Annual Accountability Report on Emergency Departments
April 1, 2019 – March 31, 2020
Department of Health and Wellness
December 2020
ISBN: 978-1-77448-093-9

