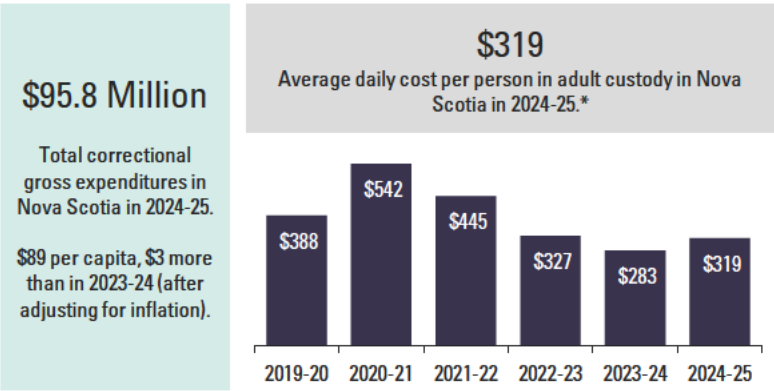
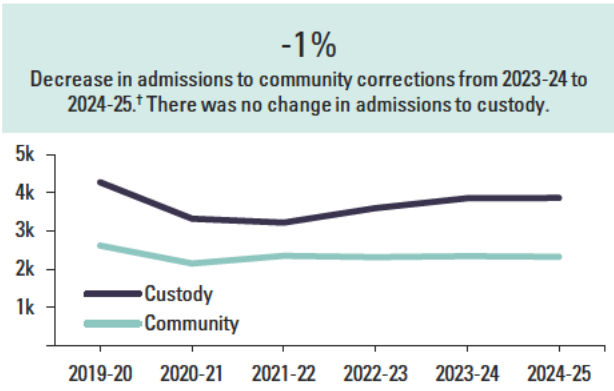


Corrections Key Indicators, 2024-2025

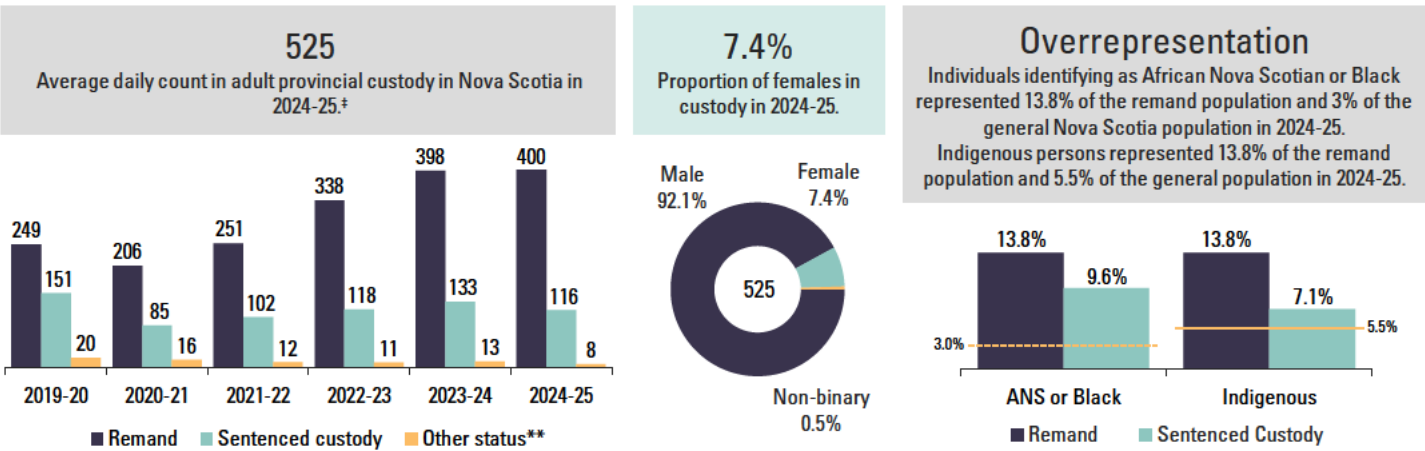
Total Expenditures



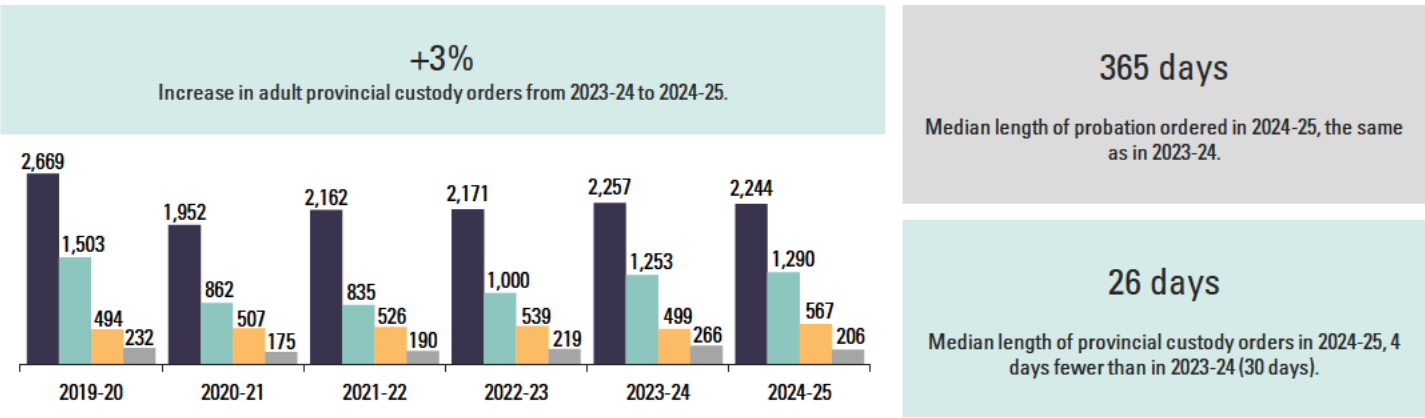
Adult Admissions



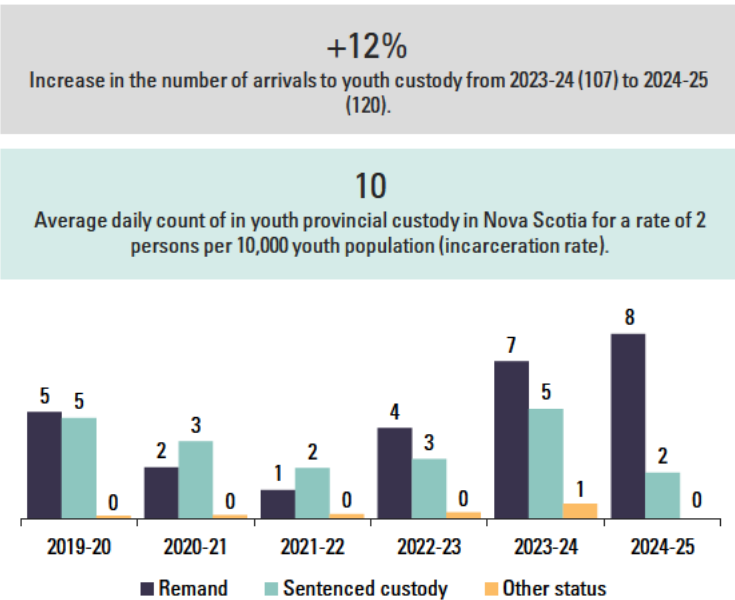
Adult Average Daily Count



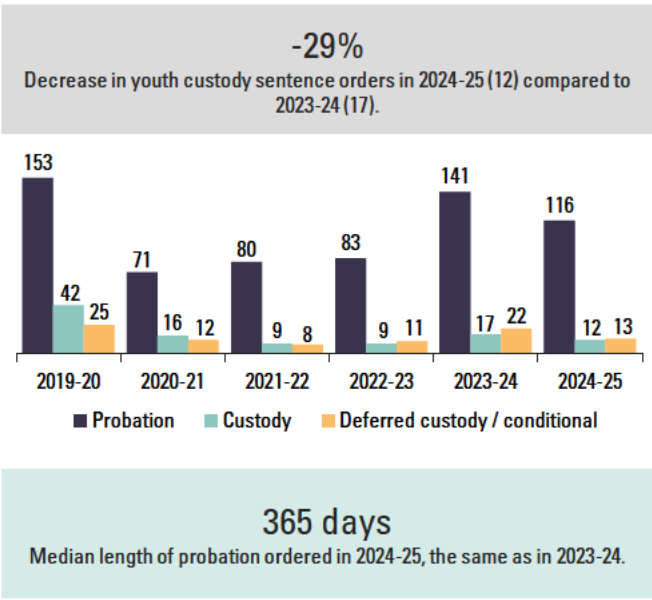
Adult Sentences



Youth Custody



Youth Sentences



* Adult correctional expenditures (in 2024 CAD) divided by the average daily count in adult provincial custody.
† Community correction admissions include new periods of probation and conditional sentences.
‡ Average daily counts include the total actual-in count of persons in provincial custody (i.e., excludes temporary absences, intermittent outs).
** Other status includes immigration holds, federal for court, and other temporary lock up.
Information in previous reports or other sources may differ from this publication due to modifications to counting methodologies.