

**Ecological Landscape Analysis**  
**Map A**  
**Elements**

Northern Plateau - Ecodistrict 100

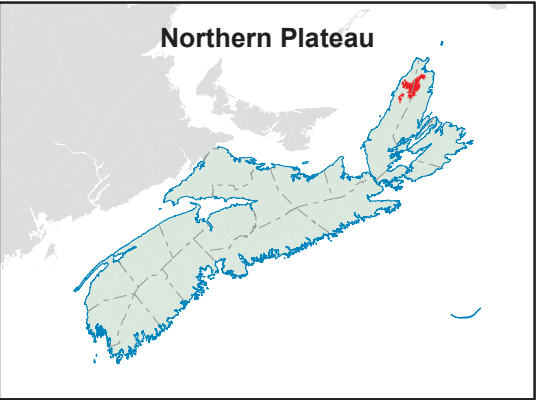
- Legend**
- Ecodistrict Boundary
  - Valley Corridors
  - Highland Barrens
  - Highland Fir Spruce
  - Wetlands
  - Water

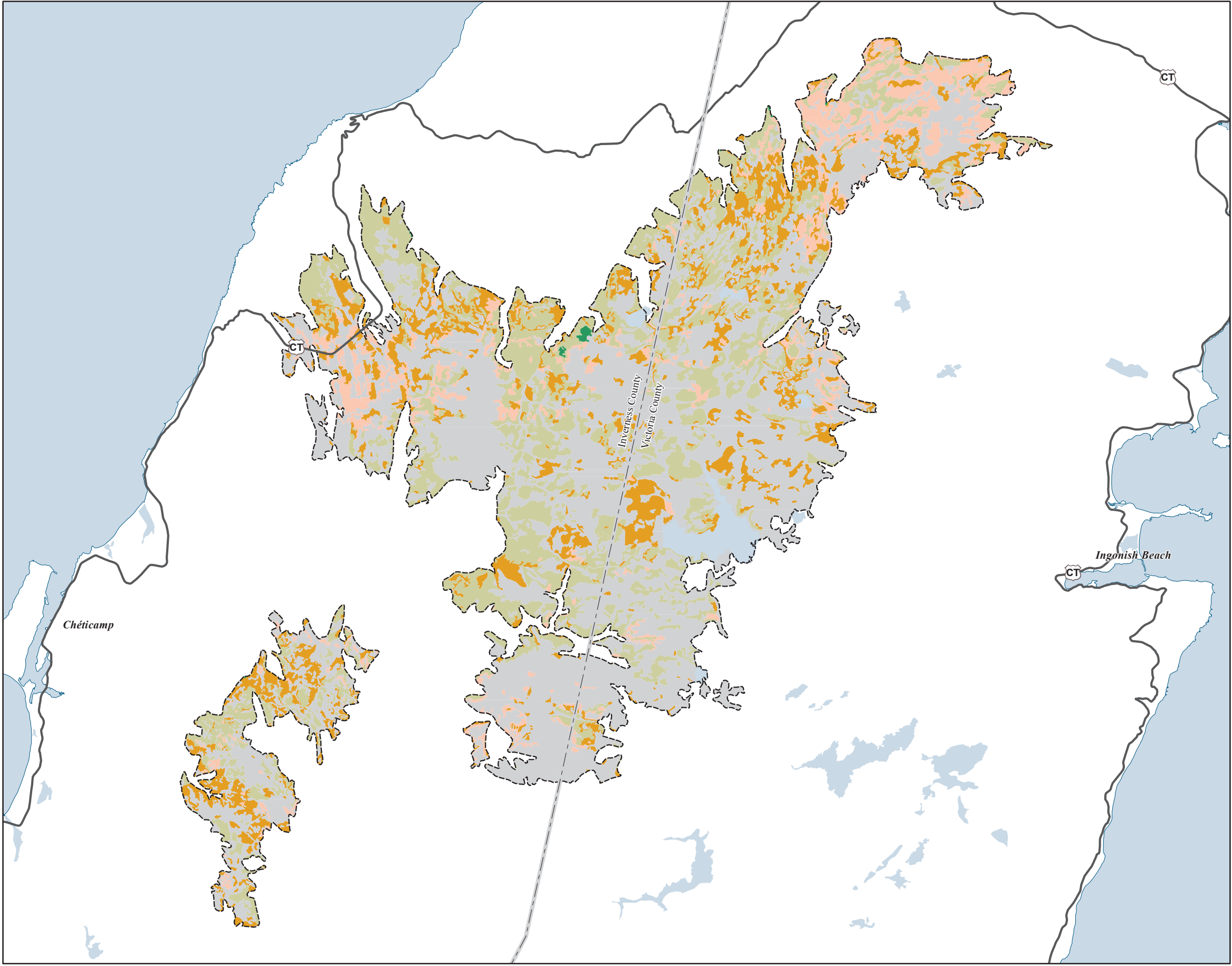


**Map Notes**  
Base data derived from the Nova Scotia Topographic Database (NSTDB). Copyright Province of Nova Scotia. All rights reserved. The NSTDB is available from Service Nova Scotia & Municipal Relations, Nova Scotia Geomatics Centre, 160 Willow St., Amherst, Nova Scotia.

Additional information derived from Nova Scotia Department of Natural Resources, Geographic Information Systems (GIS) databases.

**Disclaimer**  
The information on this map may have come from a variety of government and non-government sources and is subject to change without notice. The Nova Scotia Department of Natural Resources accepts no liability for any errors, deficiencies, or faultson this map.





**Ecological Landscape Analysis**  
**Map 1**  
**Land Capability**  
Northern Plateau - Ecodistrict 100

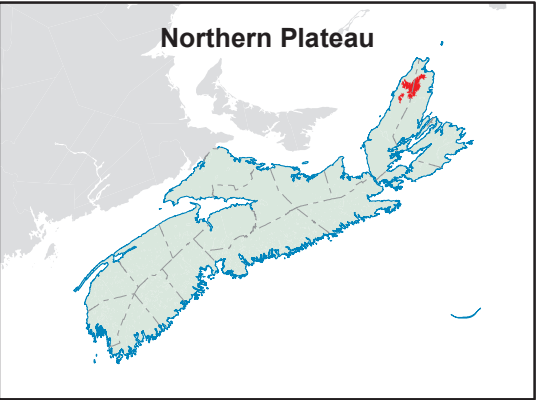
- Legend**
- Ecodistrict Boundary
  - 0 (No capability/converted)
  - 1 - 3 (Low)
  - 4 - (Low - Medium)
  - 5 - (Medium)
  - 6+ - (High)
  - Water

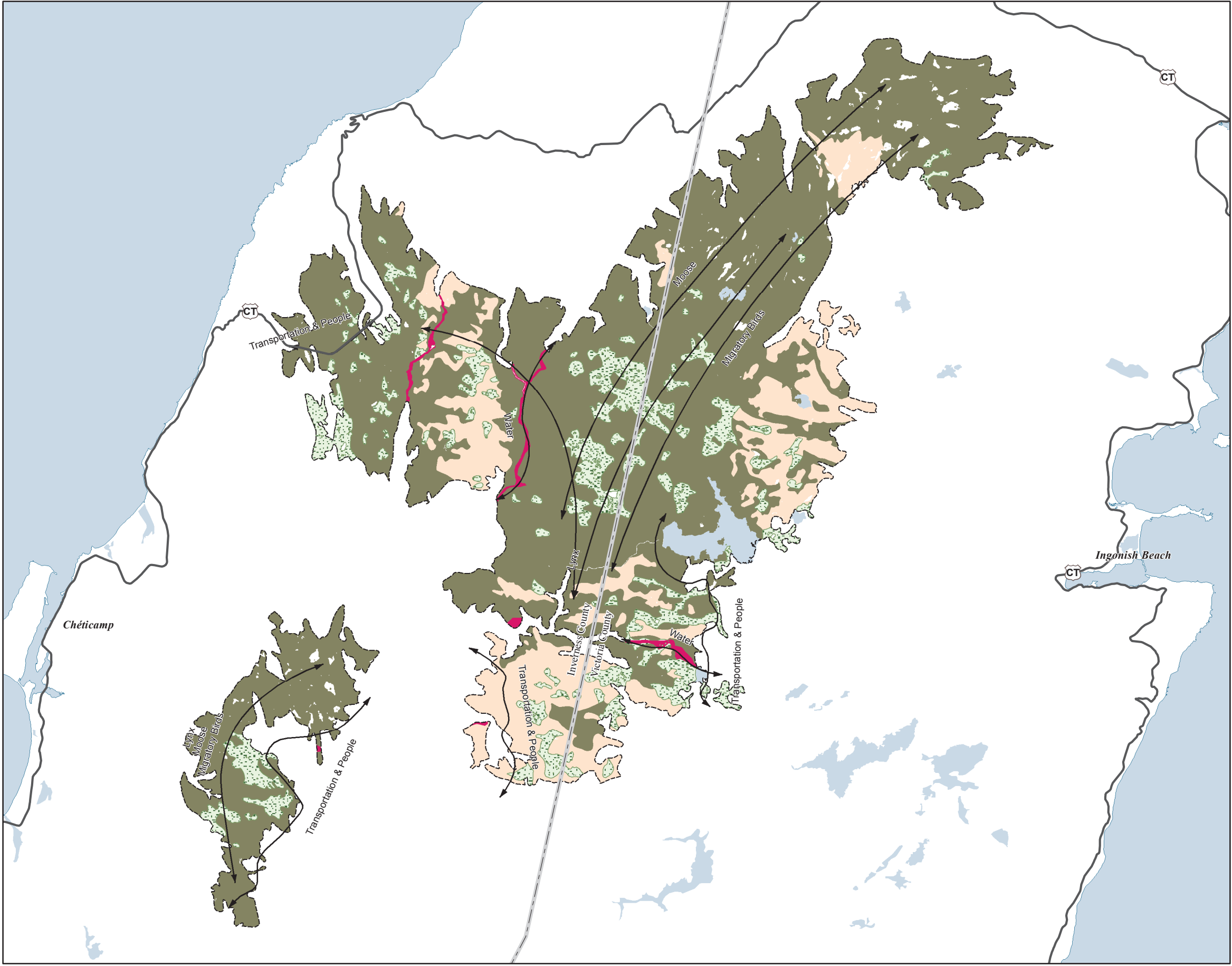


**Map Notes**  
Base data derived from the Nova Scotia Topographic Database (NSTDB). Copyright Province of Nova Scotia. All rights reserved. The NSTDB is available from Service Nova Scotia & Municipal Relations, Nova Scotia Geomatics Centre, 160 Willow St., Amherst, Nova Scotia.

Additional information derived from Nova Scotia Department of Natural Resources, Geographic Information Systems (GIS) databases.

**Disclaimer**  
The information on this map may have come from a variety of government and non-government sources and is subject to change without notice. The Nova Scotia Department of Natural Resources accepts no liability for any errors, deficiencies, or faultson this map.





**Ecological Landscape Analysis**  
**Map 2**  
**Elements and Flows**  
Northern Plateau - Ecodistrict 100

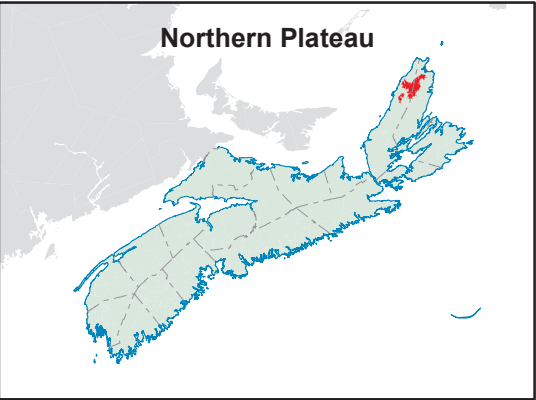
- Legend**
- Ecodistrict Boundary
  - Flows
  - Highland Barrens
  - Highland Fir Spruce
  - Wetlands
  - Valley Corridors
  - Water



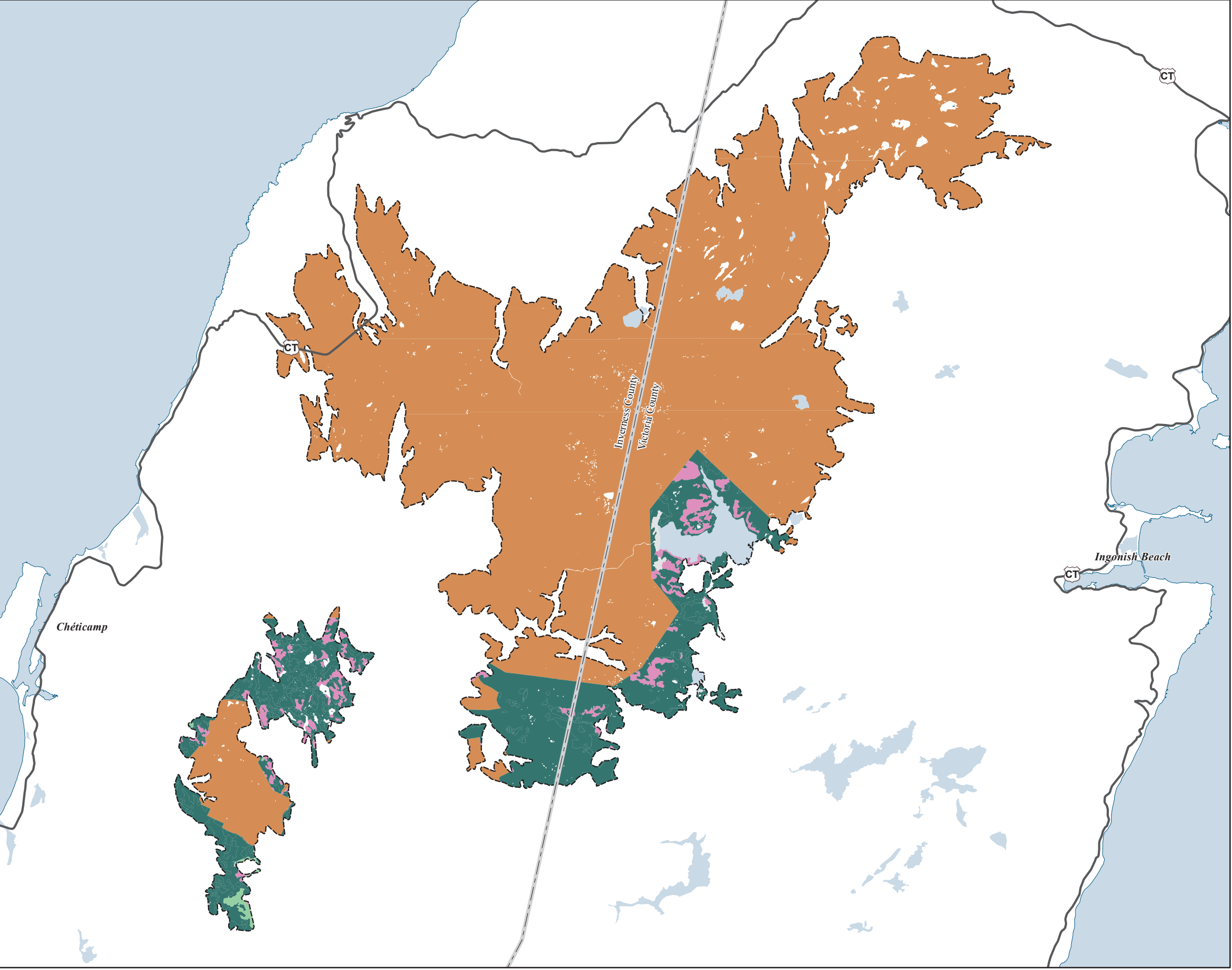
**Map Notes**  
Base data derived from the Nova Scotia Topographic Database (NSTDB). Copyright Province of Nova Scotia. All rights reserved. The NSTDB is available from Service Nova Scotia & Municipal Relations, Nova Scotia Geomatics Centre, 160 Willow St., Amherst, Nova Scotia.

Additional information derived from Nova Scotia Department of Natural Resources, Geographic Information Systems (GIS) databases.

**Disclaimer**  
The information on this map may have come from a variety of government and non-government sources and is subject to change without notice. The Nova Scotia Department of Natural Resources accepts no liability for any errors, deficiencies, or faults on this map.







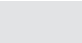






**Ecological Landscape Analysis**  
**Map 3**  
**Ecological Emphasis Classes**

Northern Plateau - Ecodistrict 100

**Legend**

-  Ecodistrict Boundary
-  Reserve
-  Extensive
-  Intensive
-  Converted
-  Unclassified
-  Water



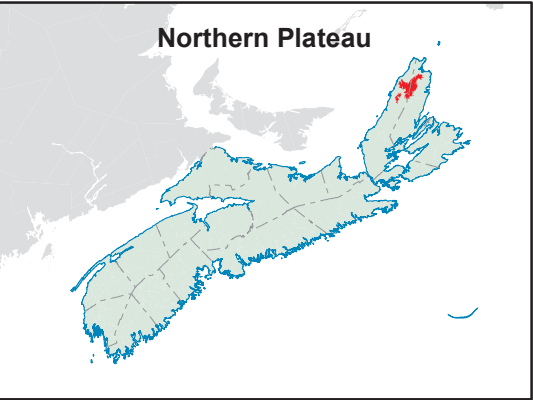
**Map Notes**

Base data derived from the Nova Scotia Topographic Database (NSTDB). Copyright Province of Nova Scotia. All rights reserved. The NSTDB is available from Service Nova Scotia & Municipal Relations, Nova Scotia Geomatics Centre, 160 Willow St., Amherst, Nova Scotia.

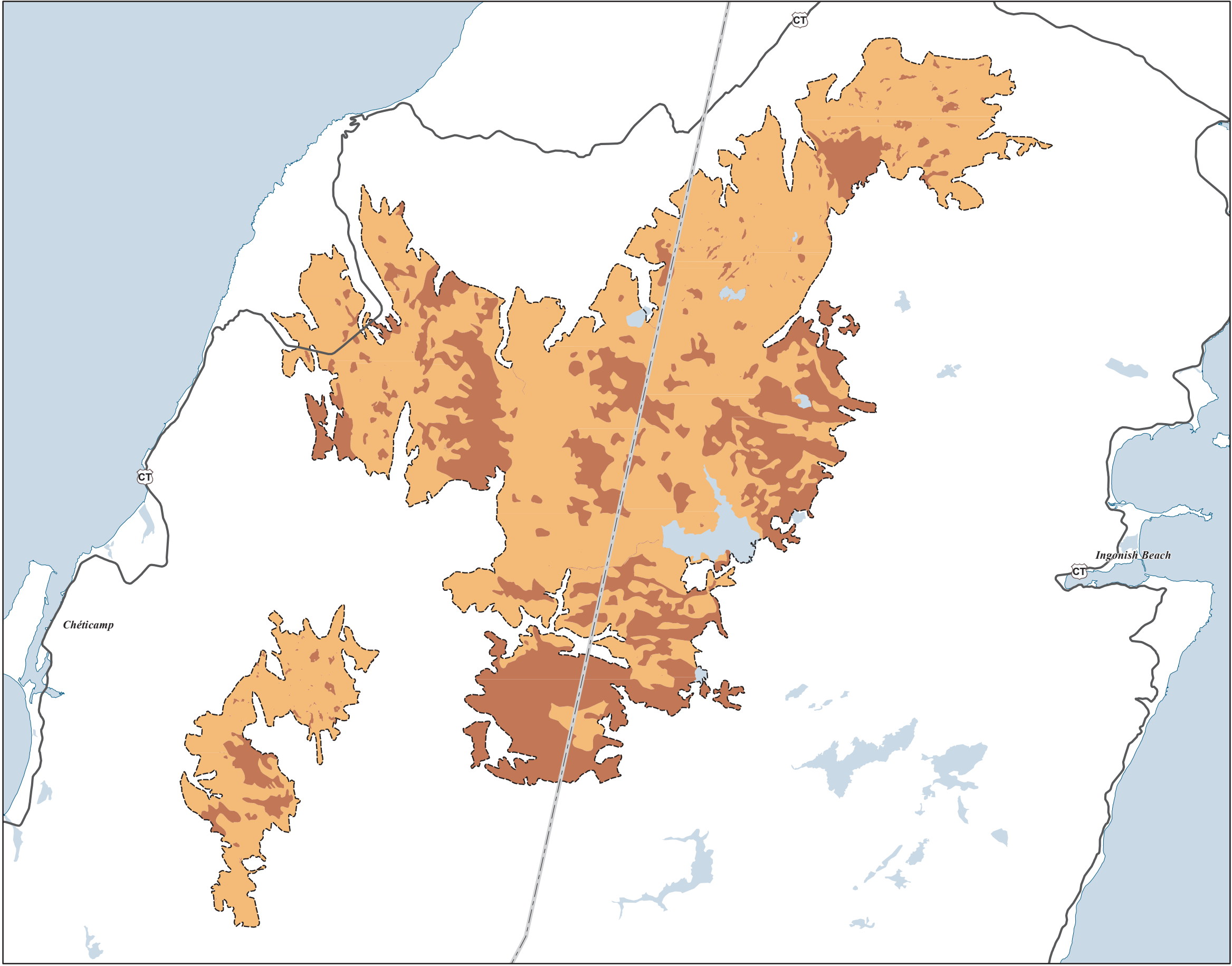
Additional information derived from Nova Scotia Department of Natural Resources, Geographic Information Systems (GIS) databases.

**Disclaimer**

The information on this map may have come from a variety of government and non-government sources and is subject to change without notice. The Nova Scotia Department of Natural Resources accepts no liability for any errors, deficiencies, or faultson this map.







**Ecological Landscape Analysis**  
**Map 4**  
**Natural Disturbances**  
Northern Plateau - Ecodistrict 100

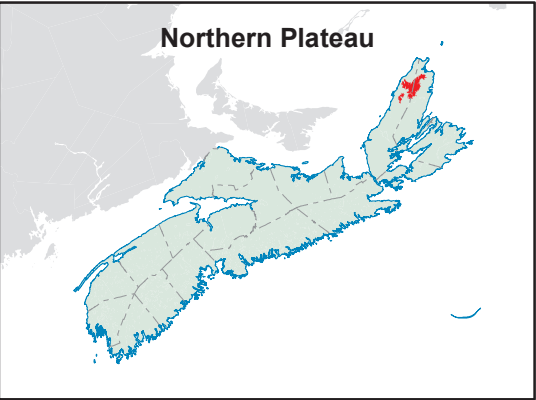
- Legend**
- Ecodistrict Boundary
  - Frequent
  - Gap
  - Infrequent
  - Open Seral
  - Water

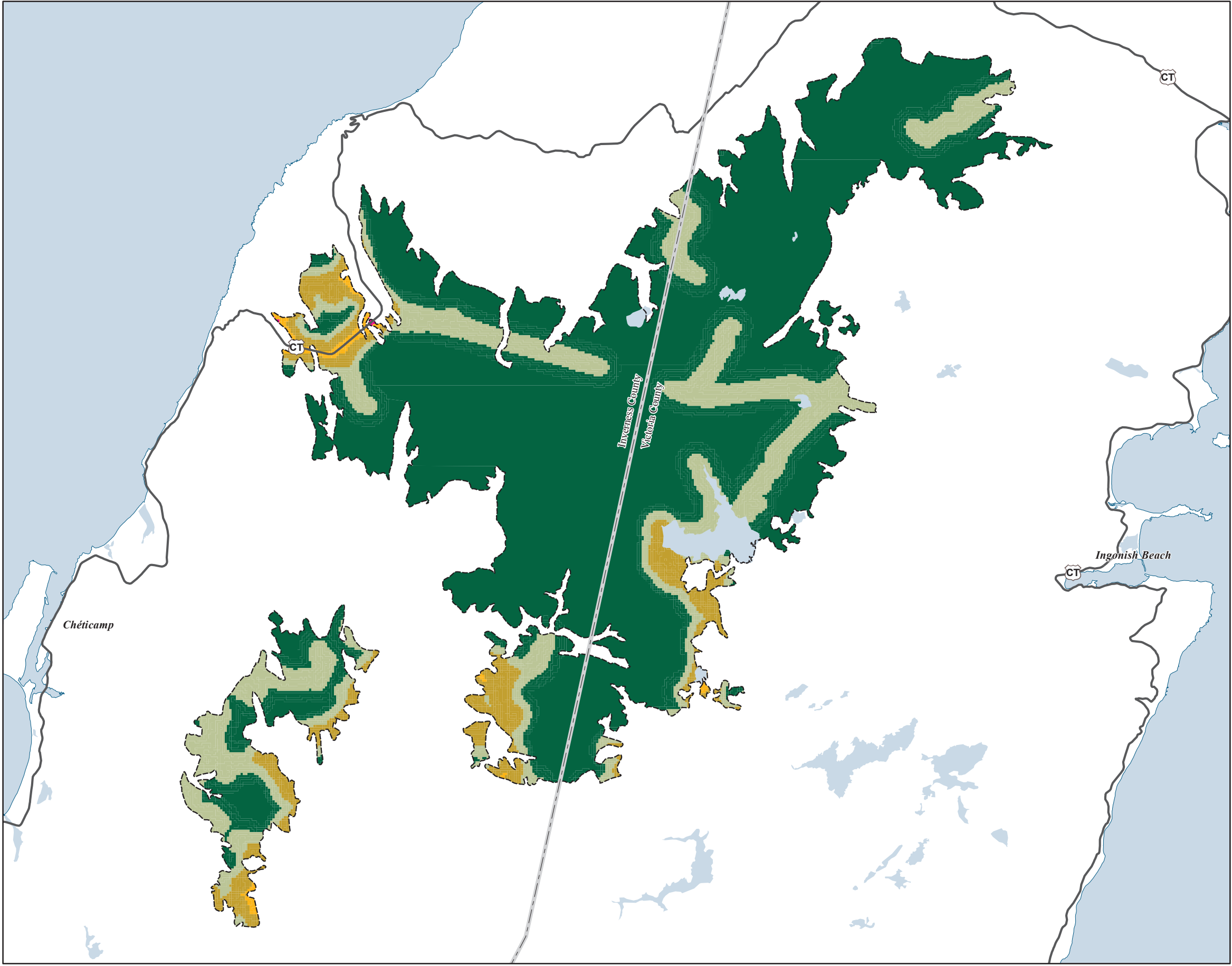


**Map Notes**  
Base data derived from the Nova Scotia Topographic Database (NSTDB). Copyright Province of Nova Scotia. All rights reserved. The NSTDB is available from Service Nova Scotia & Municipal Relations, Nova Scotia Geomatics Centre, 160 Willow St., Amherst, Nova Scotia.

Additional information derived from Nova Scotia Department of Natural Resources, Geographic Information Systems (GIS) databases.

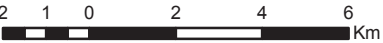
**Disclaimer**  
The information on this map may have come from a variety of government and non-government sources and is subject to change without notice. The Nova Scotia Department of Natural Resources accepts no liability for any errors, deficiencies, or faults on this map.





**Ecological Landscape Analysis**  
**Map 5**  
**Road Index**  
Northern Plateau - Ecodistrict 100

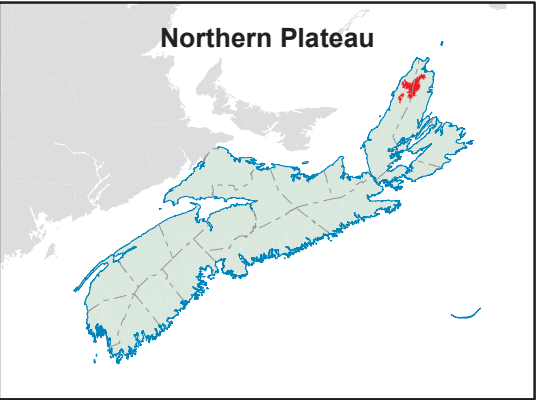
- Legend**
- Ecodistrict Boundary
  - Remote
  - Forest Resource
  - Mixed Rural
  - Agriculture Suburban
  - Urban
  - Water



**Map Notes**  
Base data derived from the Nova Scotia Topographic Database (NSTDB). Copyright Province of Nova Scotia. All rights reserved. The NSTDB is available from Service Nova Scotia & Municipal Relations, Nova Scotia Geomatics Centre, 160 Willow St., Amherst, Nova Scotia.

Additional information derived from Nova Scotia Department of Natural Resources, Geographic Information Systems (GIS) databases.



**Disclaimer**  
The information on this map may have come from a variety of government and non-government sources and is subject to change without notice. The Nova Scotia Department of Natural Resources accepts no liability for any errors, deficiencies, or faults on this map.






# Ecological Landscape Analysis Map 6 Special Occurrences - Species

Northern Plateau - Ecodistrict 100







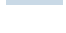
## Legend

-  Ecodistrict Boundary
-  Outside of Ecodistrict

## ACCDC Occurrences

-  Species At Risk
-  Species of Conservation Concern - May Be At Risk
-  Species of Conservation Concern - Sensitive

## NS DNR Significant Habitat

-  Species at risk
-  Species of conservation concern
-  Deer wintering
-  Migratory bird
-  Moose wintering
-  Other significant habitat
-  Water



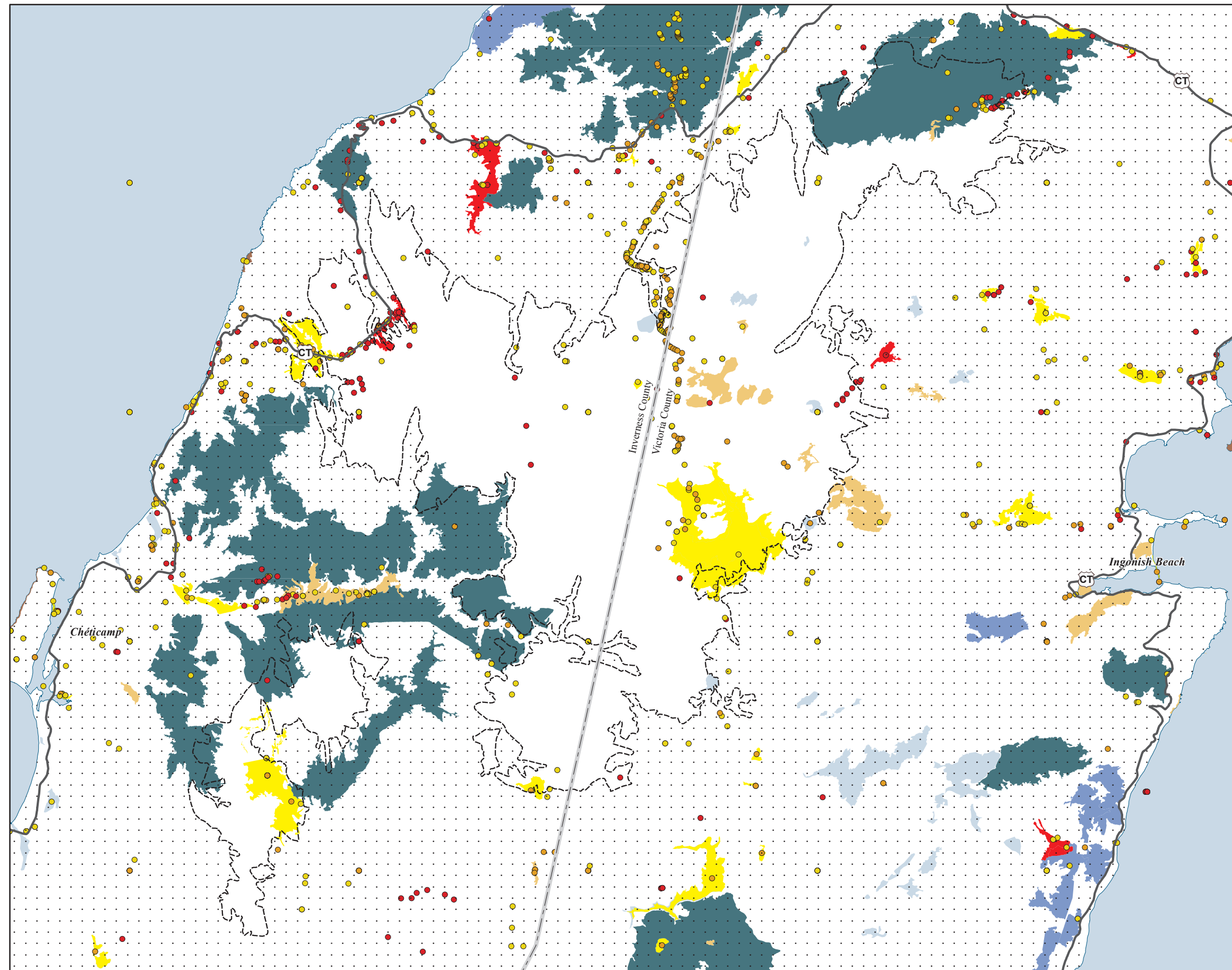
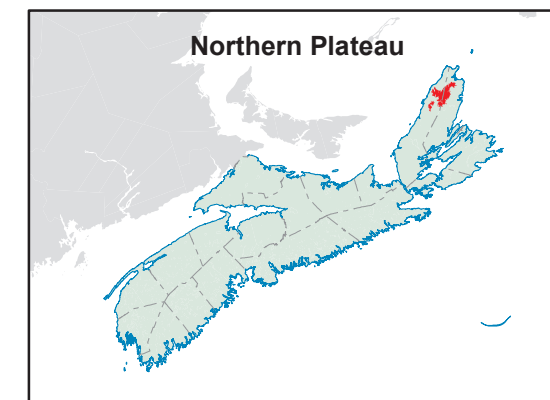
## Map Notes

Base data derived from the Nova Scotia Topographic Database (NSTDB). Copyright Province of Nova Scotia. All rights reserved. Service Nova Scotia & Municipal Relations, Nova Scotia Geomatics Centre, 160 Willow St., Amherst, Nova Scotia. Species status and locations data from Atlantic Canada Conservation Data Centre.

Additional information derived from Nova Scotia Department of Natural Resources, Geographic Information Systems (GIS) databases.

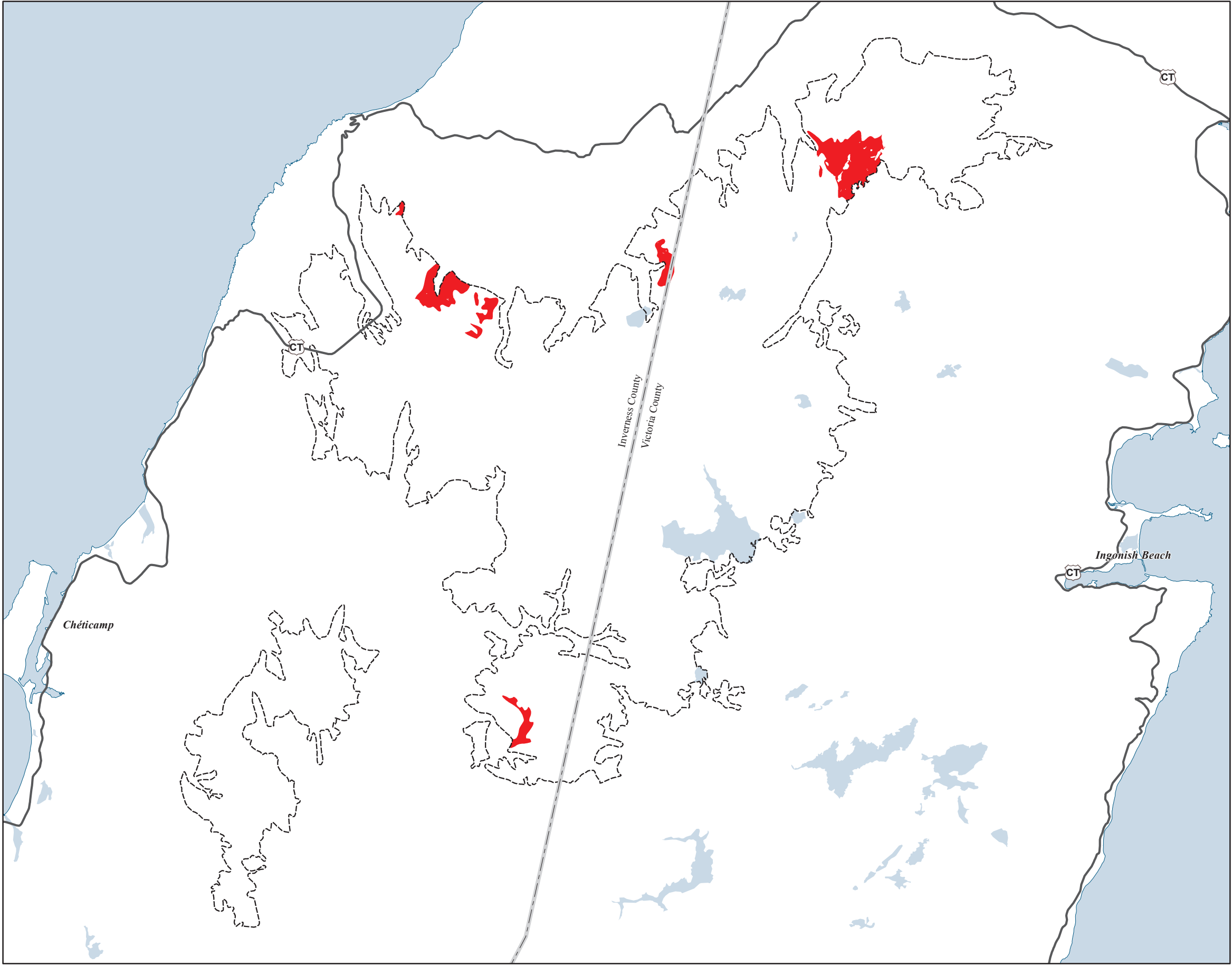
## Disclaimer

The information on this map may have come from a variety of government and non-government sources and is subject to change without notice. The Nova Scotia Department of Natural Resources accepts no liability for any errors, deficiencies, or faultson this map.



Date: 6/25/2015





Ecological Landscape Analysis  
Map 7  
Rare Ecosections  
Northern Plateau - Ecodistrict 100

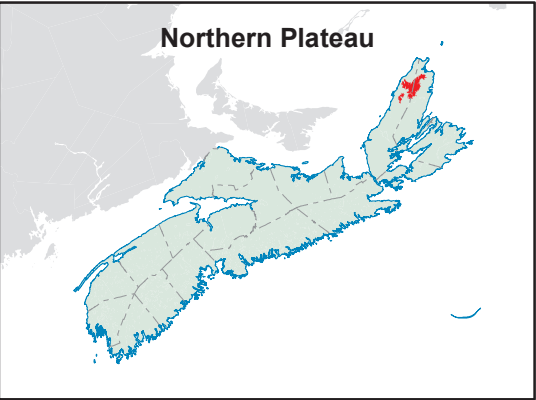
- Legend**
- Ecodistrict Boundary
  - Rare Ecosections
  - Water



**Map Notes**  
Base data derived from the Nova Scotia Topographic Database (NSTDB). Copyright Province of Nova Scotia. All rights reserved. The NSTDB is available from Service Nova Scotia & Municipal Relations, Nova Scotia Geomatics Centre, 160 Willow St., Amherst, Nova Scotia.

Additional information derived from Nova Scotia Department of Natural Resources, Geographic Information Systems (GIS) databases.





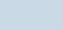
**Disclaimer**  
The information on this map may have come from a variety of government and non-government sources and is subject to change without notice. The Nova Scotia Department of Natural Resources accepts no liability for any errors, deficiencies, or faultson this map.



Ecological Landscape Analysis  
Map 8  
IRM Classes

Northern Plateau - Ecodistrict 100

Legend

-  Ecodistrict Boundary
-  C1 - General Resource Use
-  C2 - Multiple and Adaptive Resource Use
-  C3 - Protected and Limited Use
-  Water



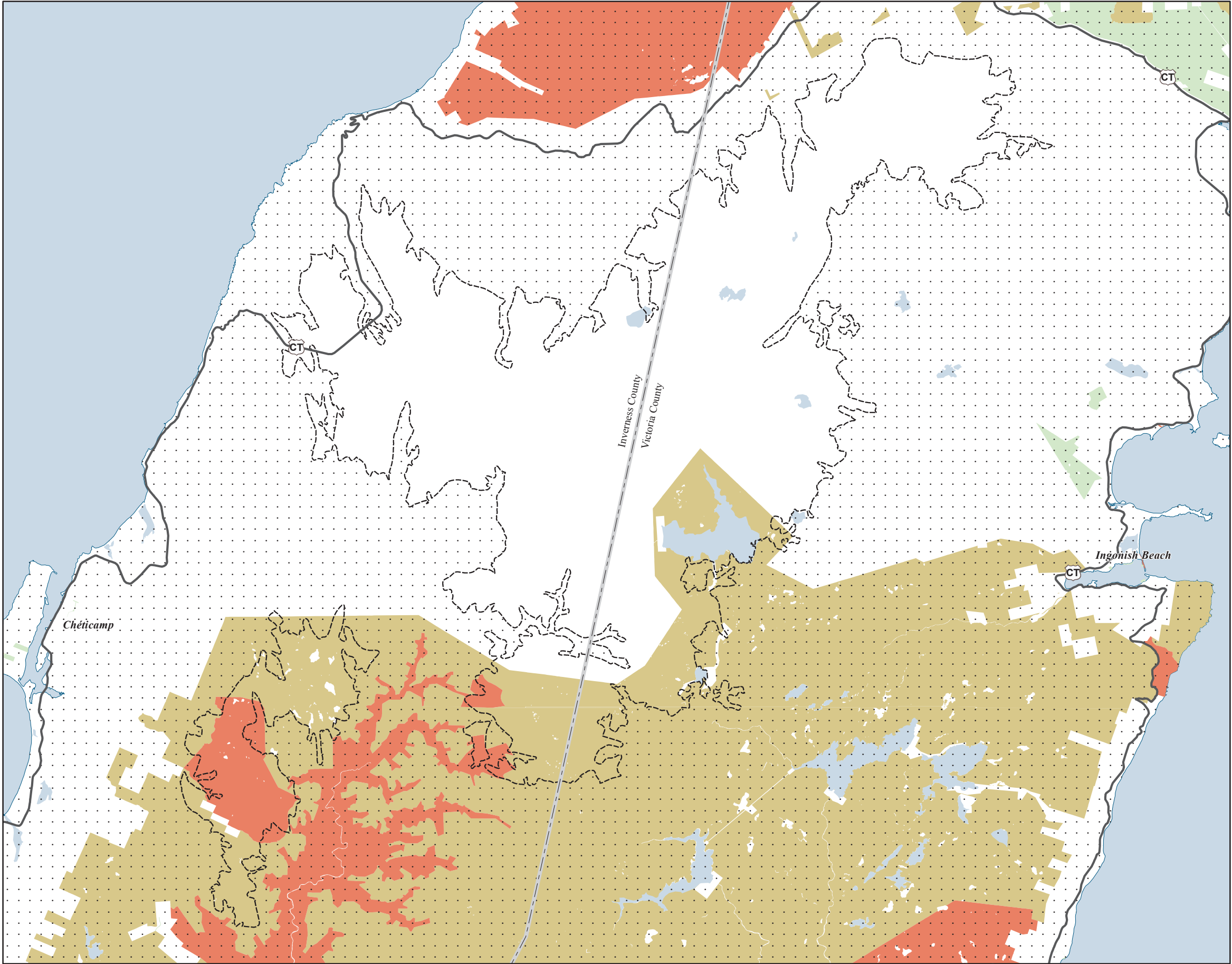
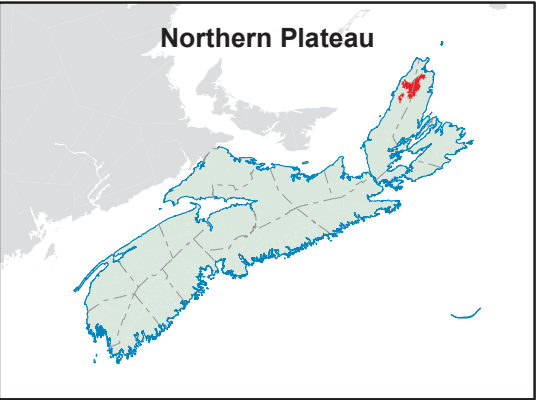
Map Notes

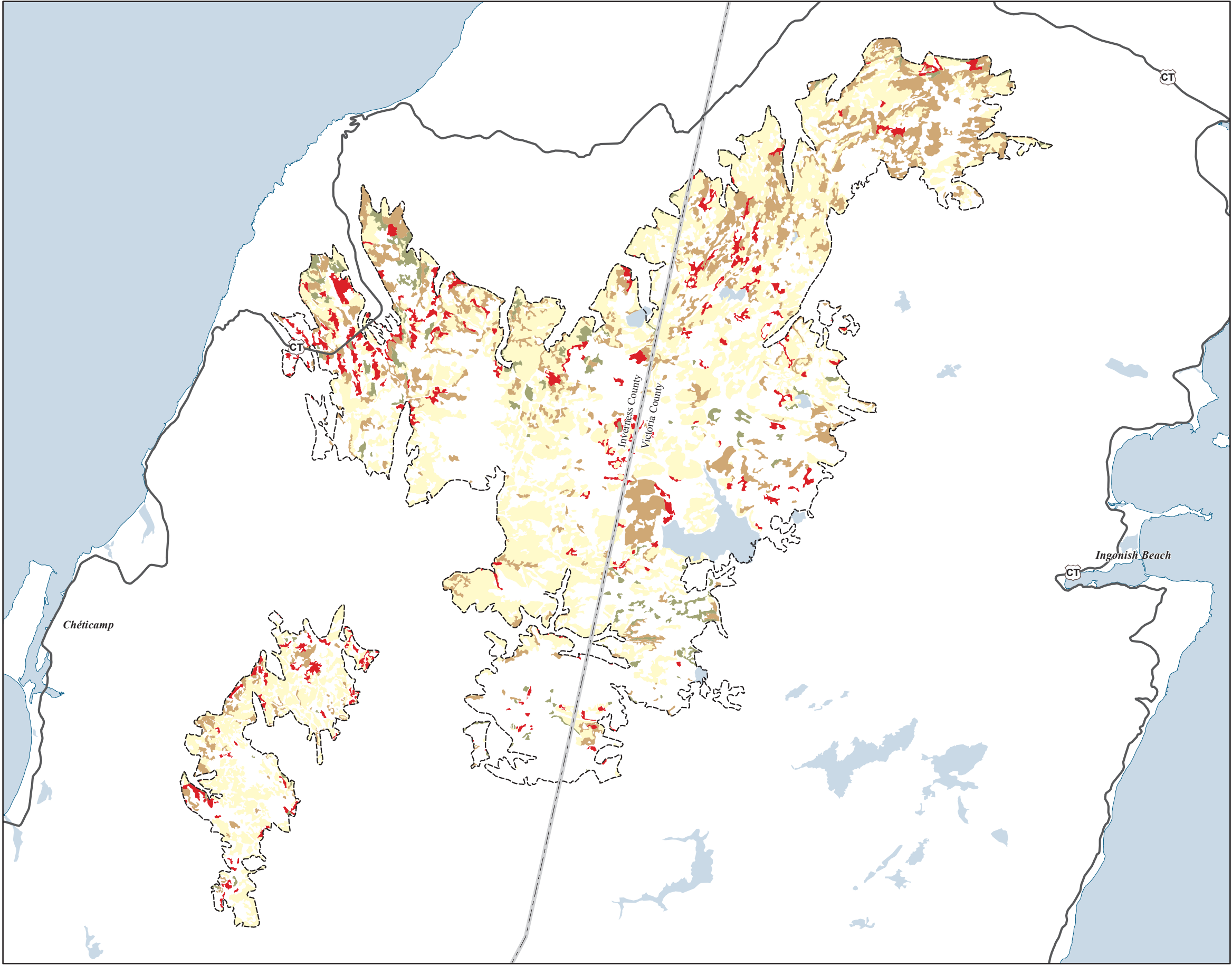
Base data derived from the Nova Scotia Topographic Database (NSTDB). Copyright Province of Nova Scotia. All rights reserved. The NSTDB is available from Service Nova Scotia & Municipal Relations, Nova Scotia Geomatics Centre, 160 Willow St., Amherst, Nova Scotia.

Additional information derived from Nova Scotia Department of Natural Resources, Geographic Information Systems (GIS) databases.

Disclaimer

The information on this map may have come from a variety of government and non-government sources and is subject to change without notice. The Nova Scotia Department of Natural Resources accepts no liability for any errors, deficiencies, or faultson this map.





Ecological Landscape Analysis  
**Map 9**  
**Development Classes**  
Northern Plateau - Ecodistrict 100

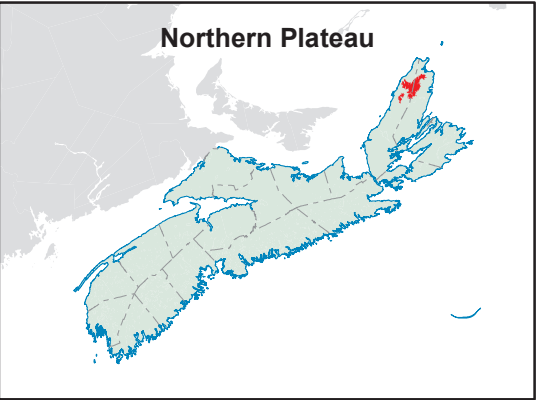
- Legend**
- Ecodistrict Boundary
  - Not forested
  - Establishment
  - Young Forest
  - Mature Timber
  - Multi-Aged / Old Forest
  - Water



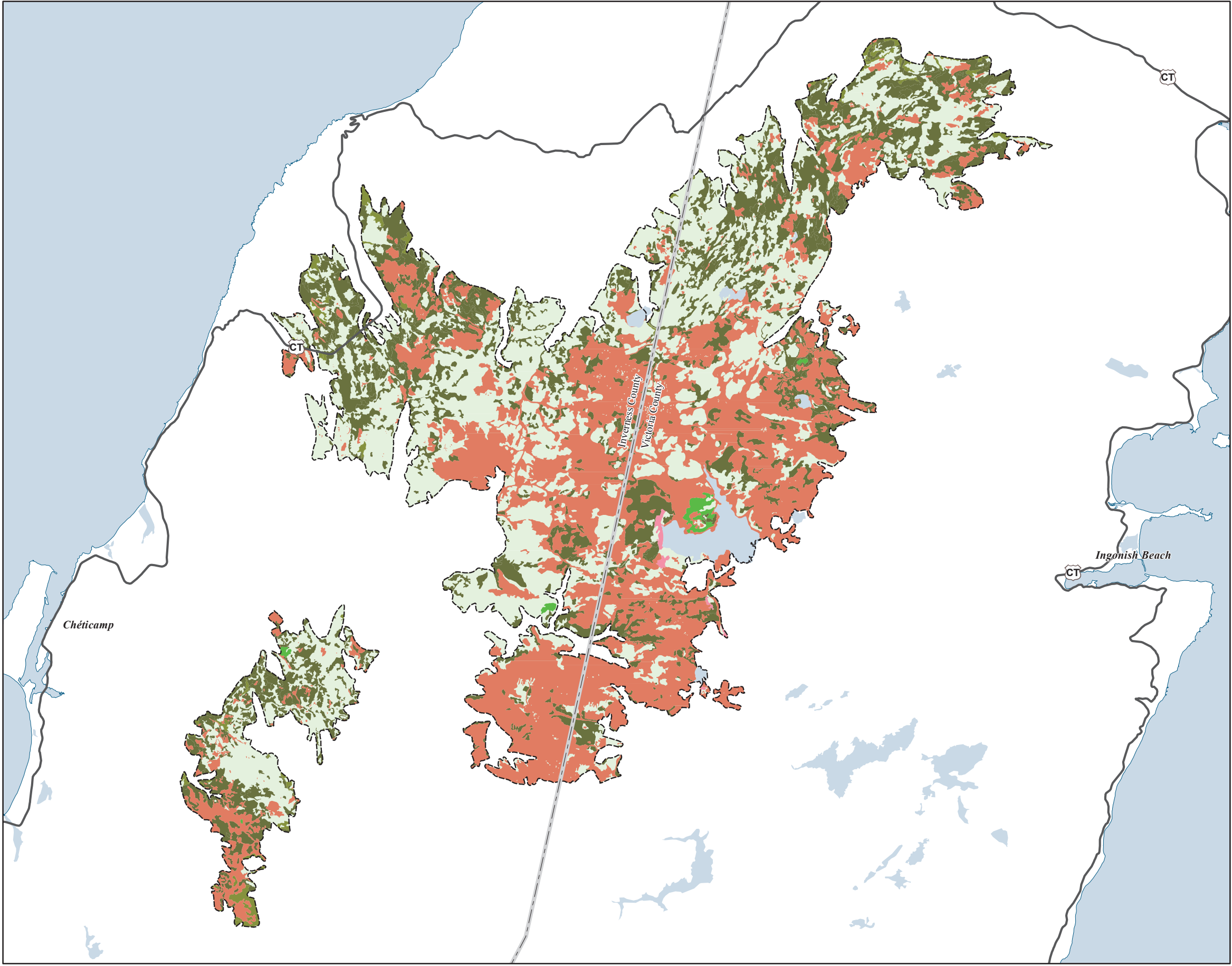
**Map Notes**  
Base data derived from the Nova Scotia Topographic Database (NSTDB). Copyright Province of Nova Scotia. All rights reserved. The NSTDB is available from Service Nova Scotia & Municipal Relations, Nova Scotia Geomatics Centre, 160 Willow St., Amherst, Nova Scotia.

Additional information derived from Nova Scotia Department of Natural Resources, Geographic Information Systems (GIS) databases.

**Disclaimer**  
The information on this map may have come from a variety of government and non-government sources and is subject to change without notice. The Nova Scotia Department of Natural Resources accepts no liability for any errors, deficiencies, or faultson this map.







**Ecological Landscape Analysis**  
**Map 10**  
**Seral Stages**

Northern Plateau - Ecodistrict 100

**Legend**

- Ecodistrict Boundary
- Ecological Land Cover**
- Agriculture and Developed Vegetation
  - Shrublands and Herbaceous Vegetation
  - Sparse Vegetation and Naturally Unvegetated
  - Urban/Industrial Vegetation and Unvegetated
- Seral Stage**
- Unclassified (e.g. recent cut)
  - Early
  - Mid
  - Late
  - Water



**Map Notes**

Base data derived from the Nova Scotia Topographic Database (NSTDB). Copyright Province of Nova Scotia. All rights reserved. The NSTDB is available from Service Nova Scotia & Municipal Relations, Nova Scotia Geomatics Centre, 160 Willow St., Amherst, Nova Scotia.

Additional information derived from Nova Scotia Department of Natural Resources, Geographic Information Systems (GIS) databases.

**Disclaimer**

The information on this map may have come from a variety of government and non-government sources and is subject to change without notice. The Nova Scotia Department of Natural Resources accepts no liability for any errors, deficiencies, or faults on this map.

