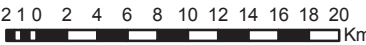


Ecological Landscape Analysis
Map A
Elements

Cape Breton Highlands - Ecodistrict 210

Legend

- Ecodistrict Boundary
- Valley Corridors
- Highland Barrens
- Highland Fir Spruce
- Highland Mixedwood
- Rockland
- Wetlands
- Water



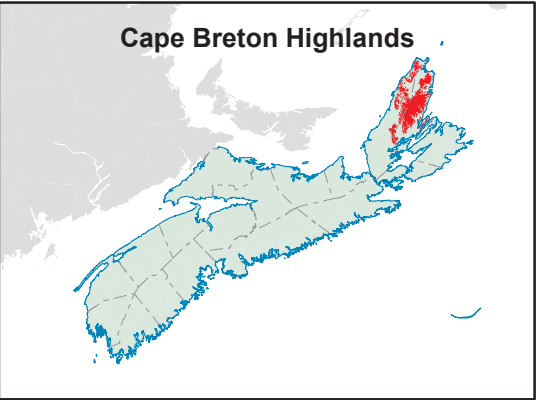
Map Notes

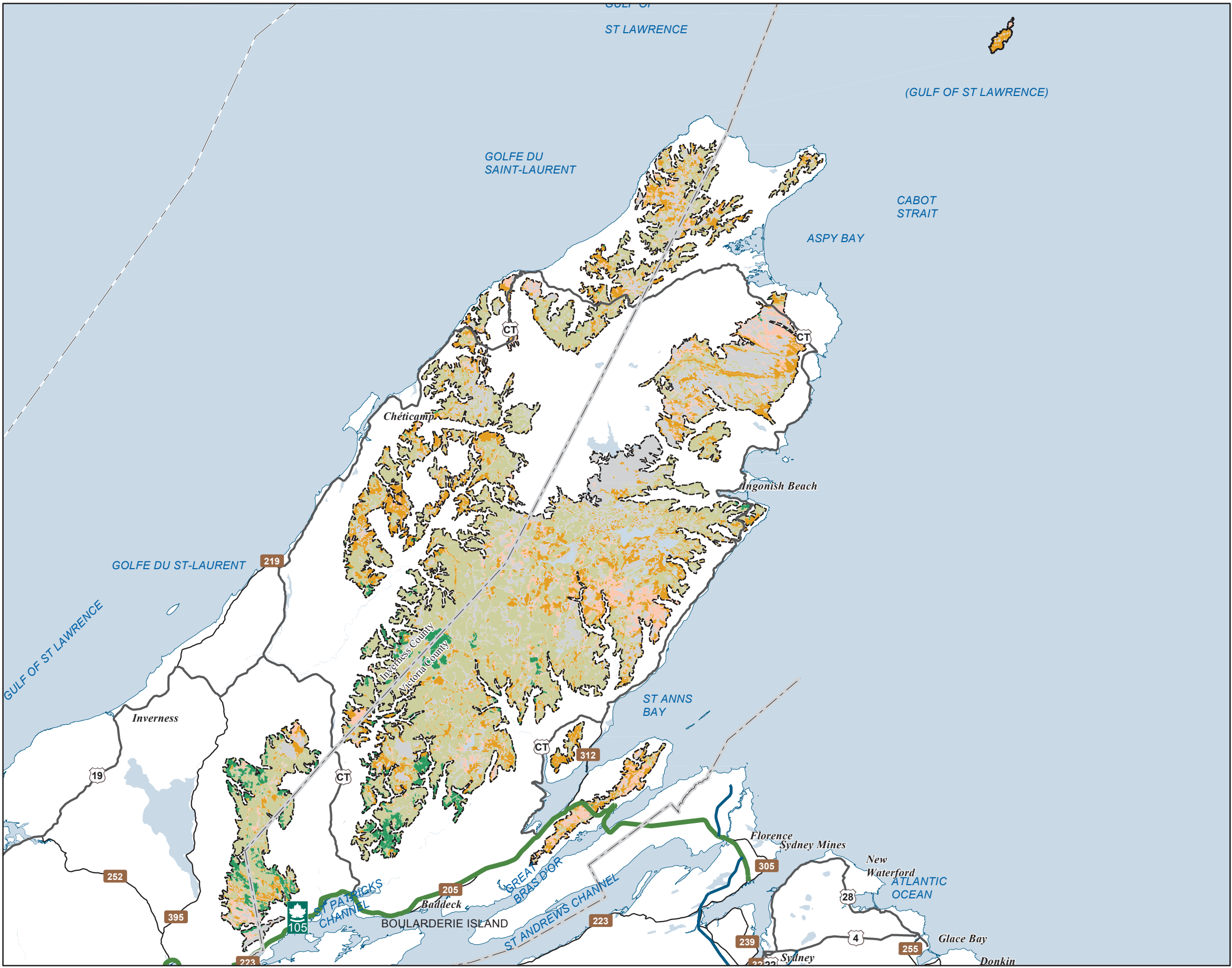
Base data derived from the Nova Scotia Topographic Database (NSTDB). Copyright Province of Nova Scotia. All rights reserved. The NSTDB is available from Service Nova Scotia & Municipal Relations, Nova Scotia Geomatics Centre, 160 Willow St., Amherst, Nova Scotia.

Additional information derived from Nova Scotia Department of Natural Resources, Geographic Information Systems (GIS) databases.

Disclaimer

The information on this map may have come from a variety of government and non-government sources and is subject to change without notice. The Nova Scotia Department of Natural Resources accepts no liability for any errors, deficiencies, or faults on this map.



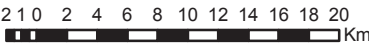


Ecological Landscape Analysis
Map 1
Land Capability

Cape Breton Highlands - Ecodistrict 210

Legend

- Ecodistrict Boundary
- 0 (No capability/converted)
- 1 - 3 (Low)
- 4 - (Low - Medium)
- 5 - (Medium)
- 6+ - (High)
- Water



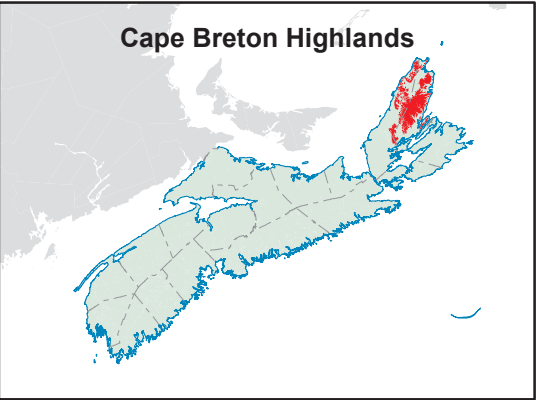
Map Notes

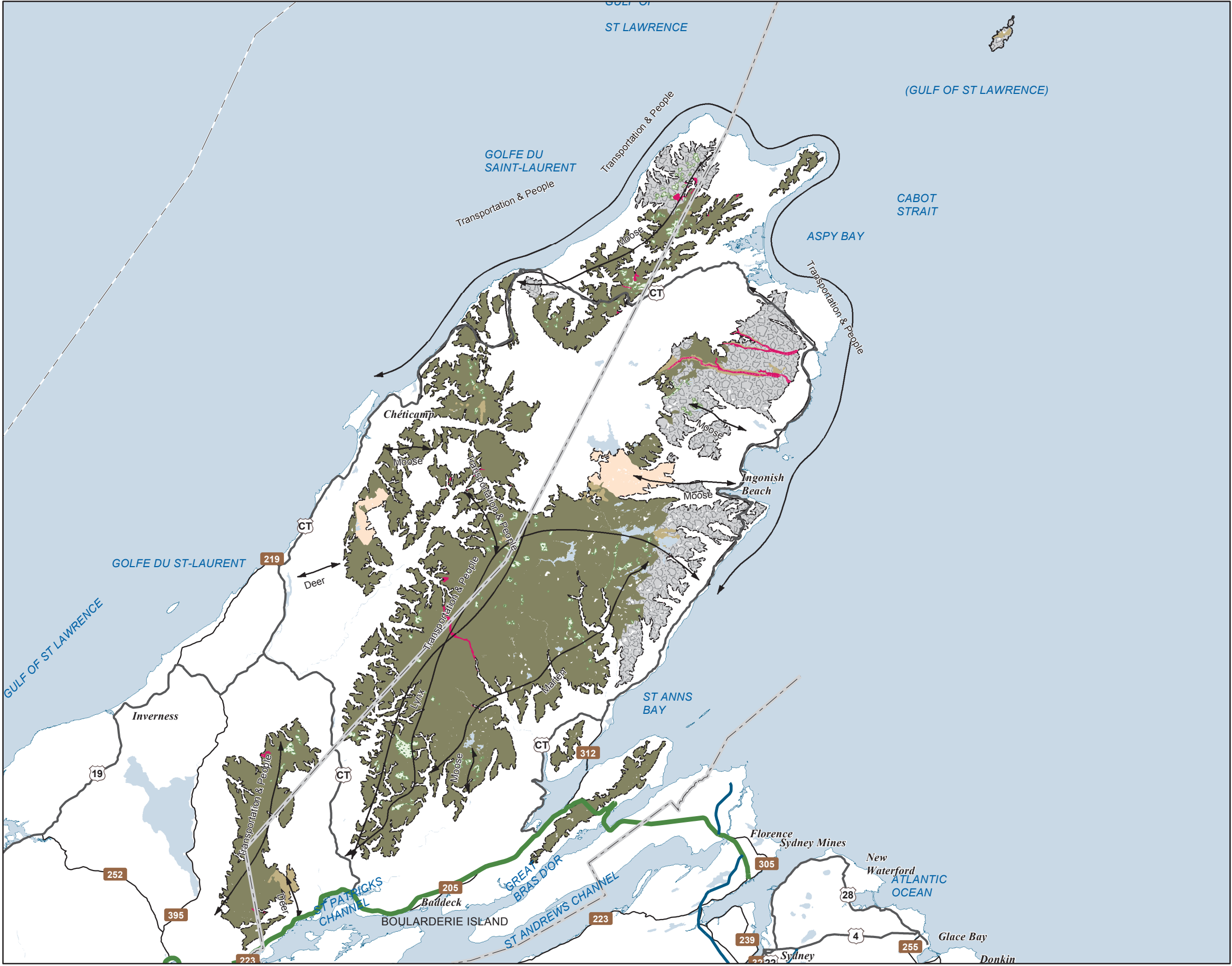
Base data derived from the Nova Scotia Topographic Database (NSTDB). Copyright Province of Nova Scotia. All rights reserved. The NSTDB is available from Service Nova Scotia & Municipal Relations, Nova Scotia Geomatics Centre, 160 Willow St., Amherst, Nova Scotia.

Additional information derived from Nova Scotia Department of Natural Resources, Geographic Information Systems (GIS) databases.

Disclaimer

The information on this map may have come from a variety of government and non-government sources and is subject to change without notice. The Nova Scotia Department of Natural Resources accepts no liability for any errors, deficiencies, or faults on this map.

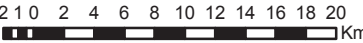




Ecological Landscape Analysis
Map 2
Elements and Flows

Cape Breton Highlands - Ecodistrict 210

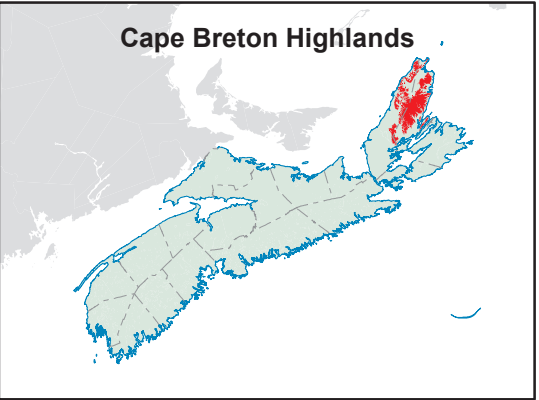
- Legend**
- Ecodistrict Boundary
 - Flows
 - Highland Barrens
 - Highland Fir Spruce
 - Highland Mixedwood
 - Rockland
 - Wetlands
 - Valley Corridors
 - Water



Map Notes
Base data derived from the Nova Scotia Topographic Database (NSTDB). Copyright Province of Nova Scotia. All rights reserved. The NSTDB is available from Service Nova Scotia & Municipal Relations, Nova Scotia Geomatics Centre, 160 Willow St., Amherst, Nova Scotia.

Additional information derived from Nova Scotia Department of Natural Resources, Geographic Information Systems (GIS) databases.

Disclaimer
The information on this map may have come from a variety of government and non-government sources and is subject to change without notice. The Nova Scotia Department of Natural Resources accepts no liability for any errors, deficiencies, or faults on this map.

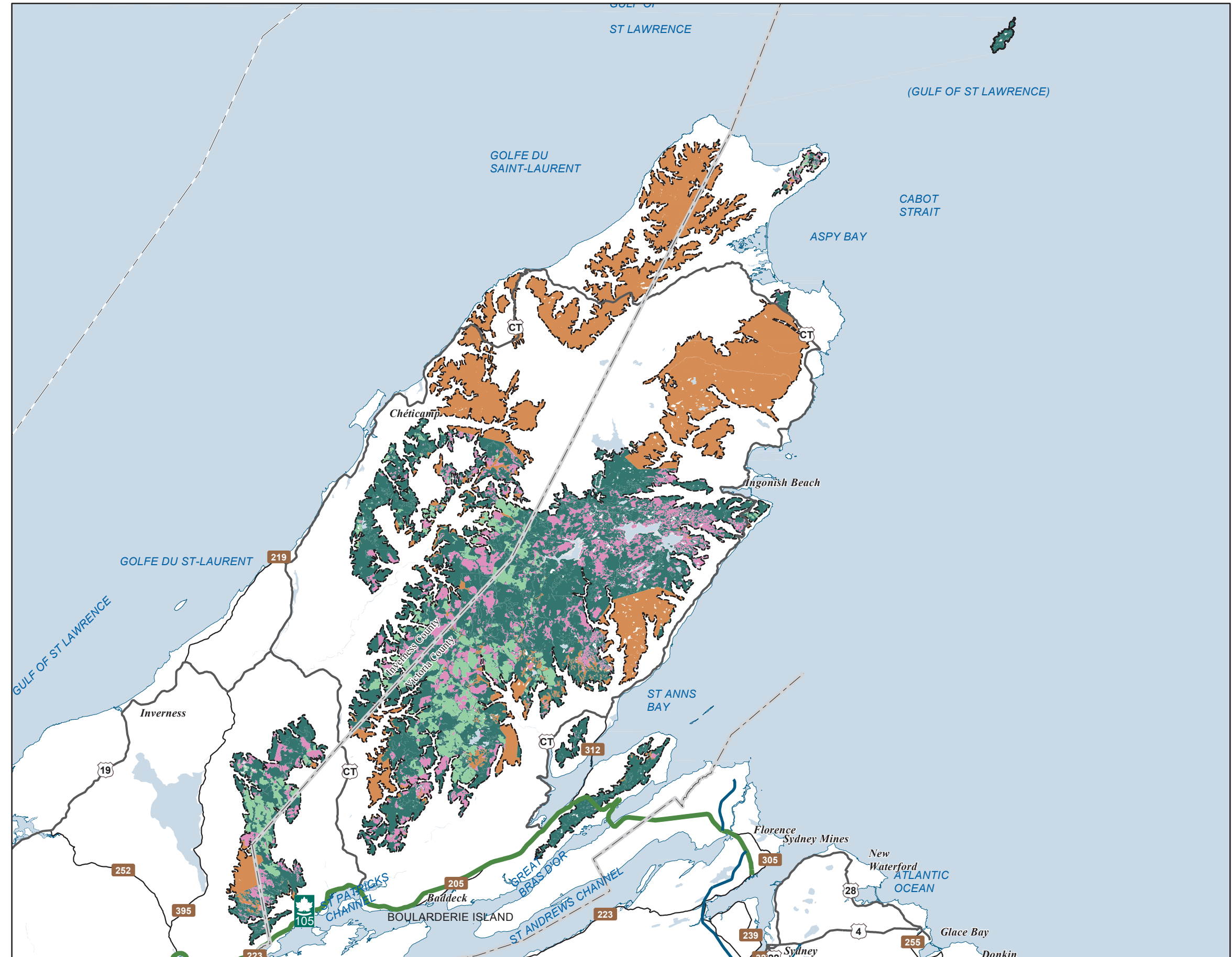


Ecological Landscape Analysis

Map 3

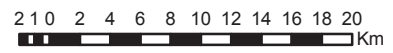
Ecological Emphasis Classes

Cape Breton Highlands - Ecodistrict 210



Legend

- Ecodistrict Boundary
- Reserve
- Extensive
- Intensive
- Converted
- Unclassified
- Water



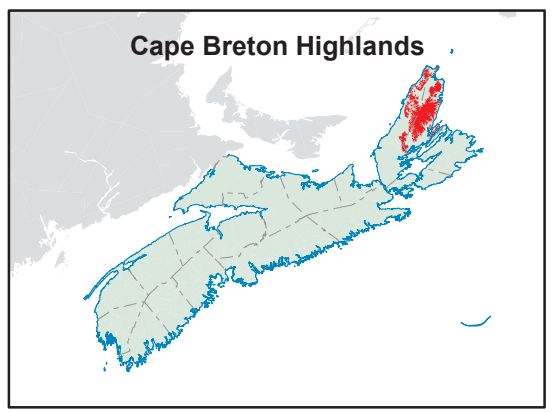
Map Notes

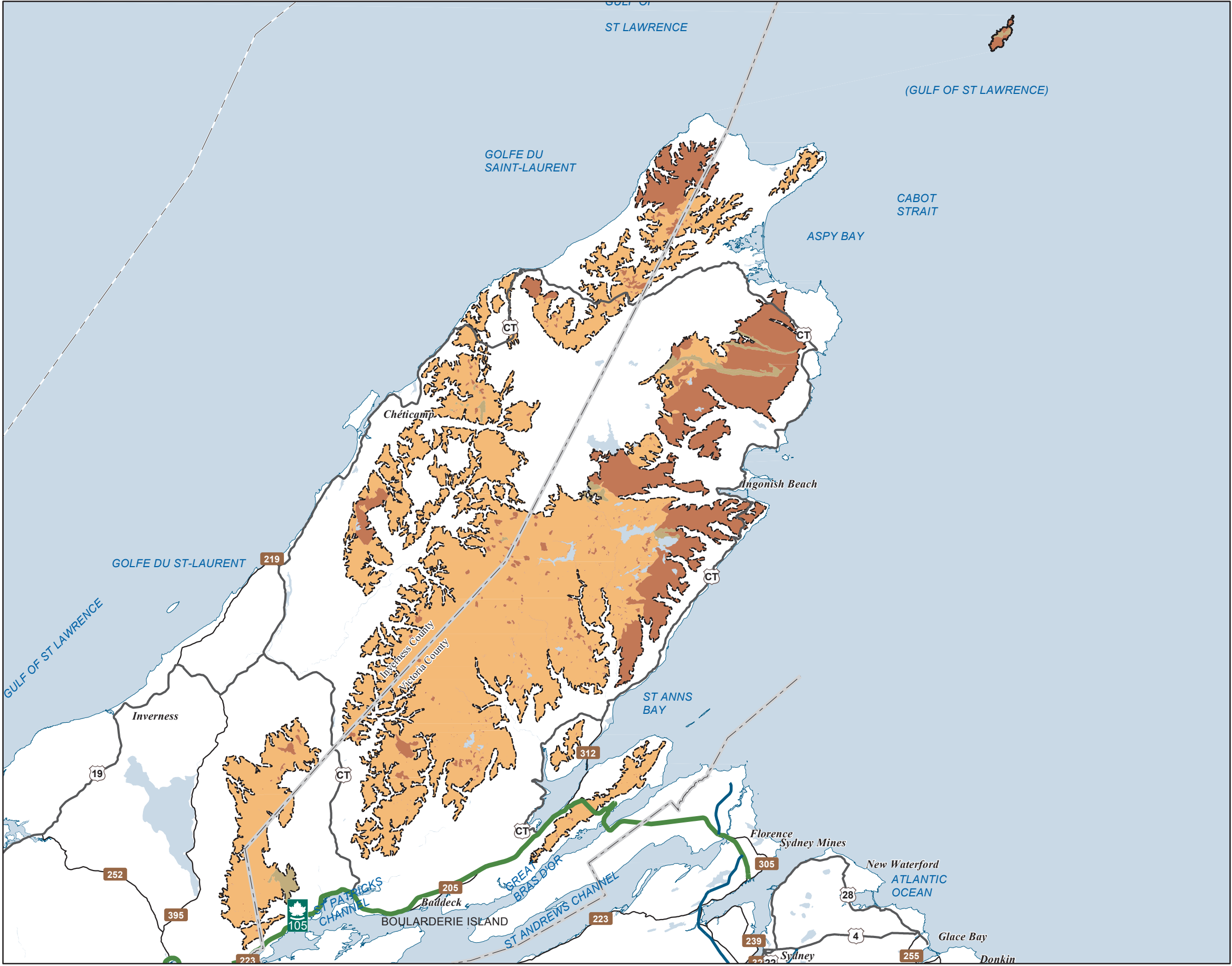
Base data derived from the Nova Scotia Topographic Database (NSTDB). Copyright Province of Nova Scotia. All rights reserved. The NSTDB is available from Service Nova Scotia & Municipal Relations, Nova Scotia Geomatics Centre, 160 Willow St., Amherst, Nova Scotia.

Additional information derived from Nova Scotia Department of Natural Resources, Geographic Information Systems (GIS) databases.

Disclaimer

The information on this map may have come from a variety of government and non-government sources and is subject to change without notice. The Nova Scotia Department of Natural Resources accepts no liability for any errors, deficiencies, or faults on this map.





Ecological Landscape Analysis
Map 4
Natural Disturbances
Cape Breton Highlands - Ecodistrict 210

Legend

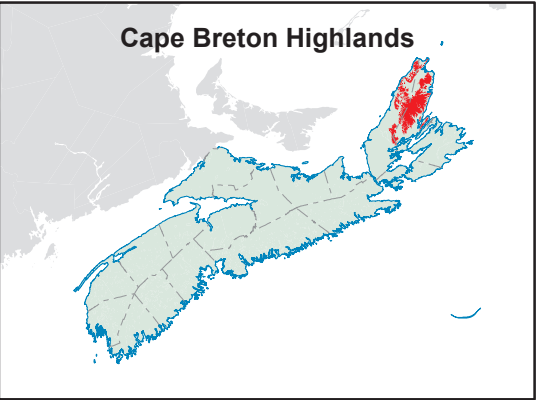
- Ecodistrict Boundary
- Frequent
- Gap
- Infrequent
- Open Seral
- Water

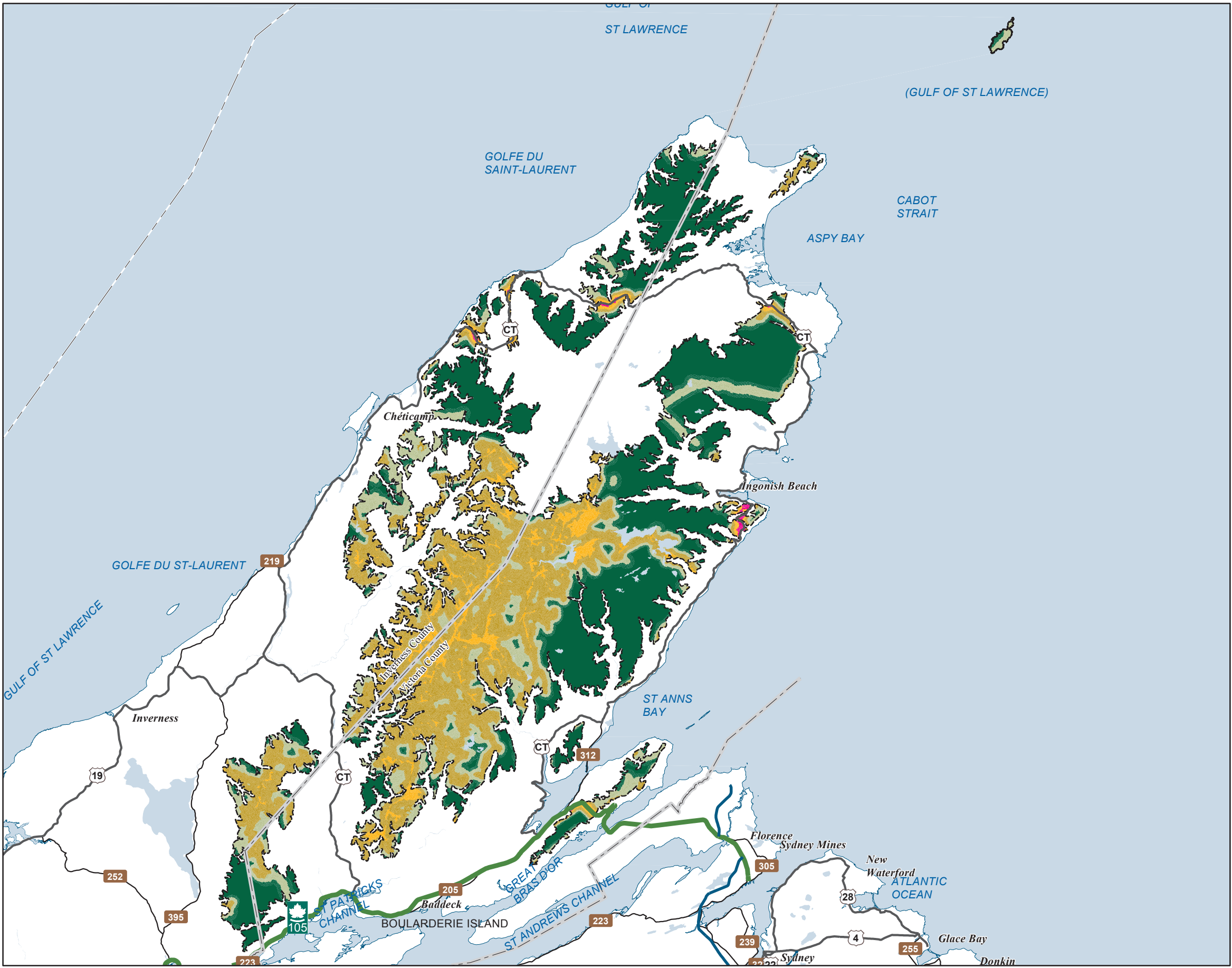


Map Notes
Base data derived from the Nova Scotia Topographic Database (NSTDB). Copyright Province of Nova Scotia. All rights reserved. The NSTDB is available from Service Nova Scotia & Municipal Relations, Nova Scotia Geomatics Centre, 160 Willow St., Amherst, Nova Scotia.

Additional information derived from Nova Scotia Department of Natural Resources, Geographic Information Systems (GIS) databases.

Disclaimer
The information on this map may have come from a variety of government and non-government sources and is subject to change without notice. The Nova Scotia Department of Natural Resources accepts no liability for any errors, deficiencies, or faults on this map.



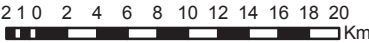


Ecological Landscape Analysis
Map 5
Road Index

Cape Breton Highlands - Ecodistrict 210

Legend

- Ecodistrict Boundary
- Remote
- Forest Resource
- Mixed Rural
- Agriculture Suburban
- Urban
- Water



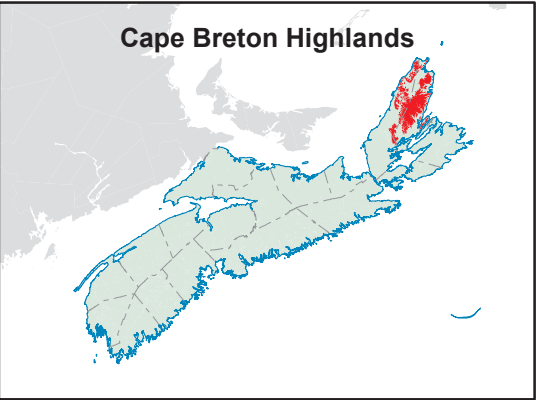
Map Notes

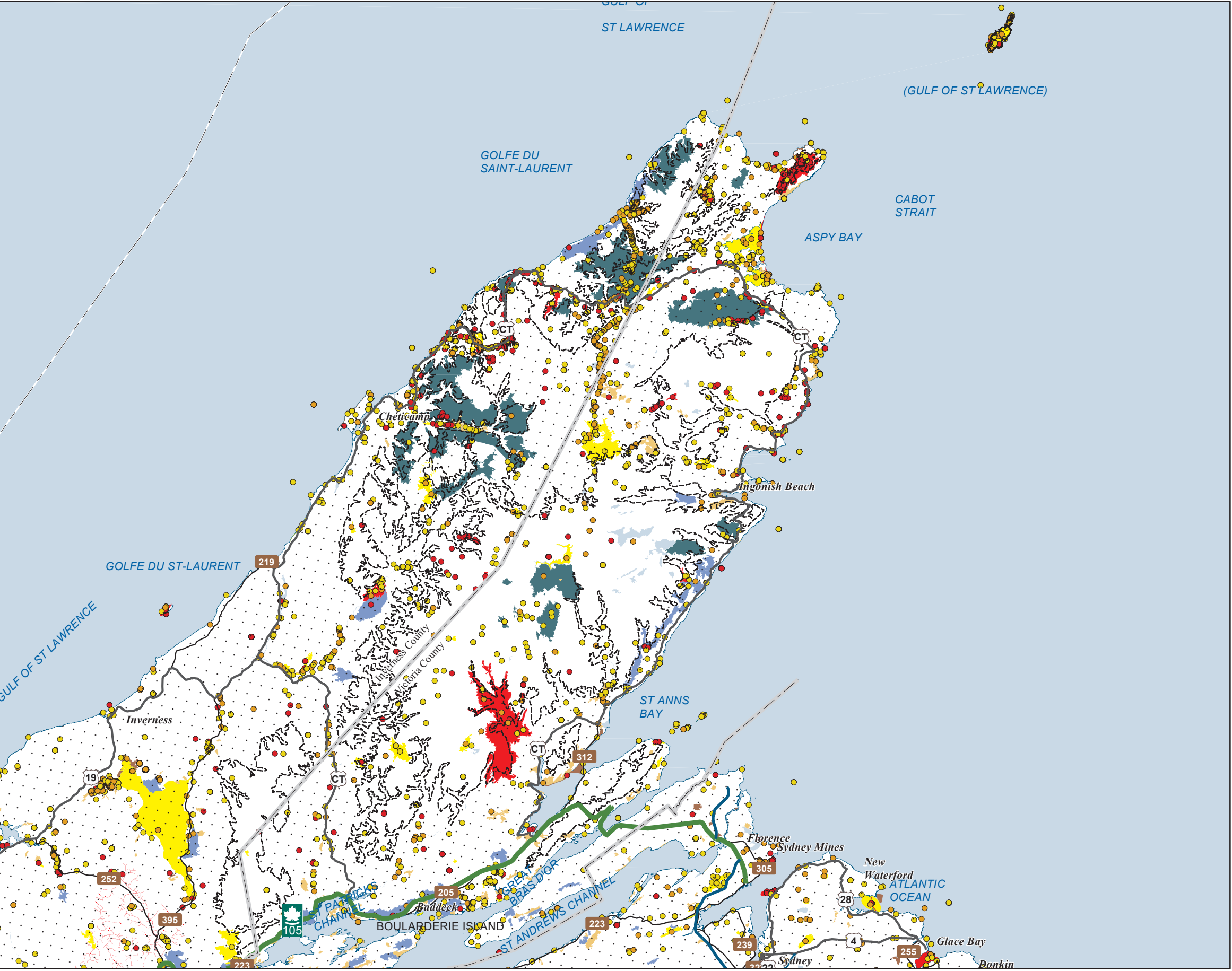
Base data derived from the Nova Scotia Topographic Database (NSTDB). Copyright Province of Nova Scotia. All rights reserved. The NSTDB is available from Service Nova Scotia & Municipal Relations, Nova Scotia Geomatics Centre, 160 Willow St., Amherst, Nova Scotia.

Additional information derived from Nova Scotia Department of Natural Resources, Geographic Information Systems (GIS) databases.

Disclaimer

The information on this map may have come from a variety of government and non-government sources and is subject to change without notice. The Nova Scotia Department of Natural Resources accepts no liability for any errors, deficiencies, or faults on this map.





Date: 6/25/2015

Ecological Landscape Analysis Map 6 Special Occurrences - Species

Cape Breton Highlands - Ecodistrict 210

Legend

- Ecodistrict Boundary
- Outside of Ecodistrict

ACCDC Occurrences

- Species At Risk
- Species of Conservation Concern - May Be At Risk
- Species of Conservation Concern - Sensitive

NS DNR Significant Habitat

- Species at risk
- Species of conservation concern
- Deer wintering
- Migratory bird
- Moose wintering
- Other significant habitat
- Water

2 10 2 4 6 8 10 12 14 16 18 20
Km

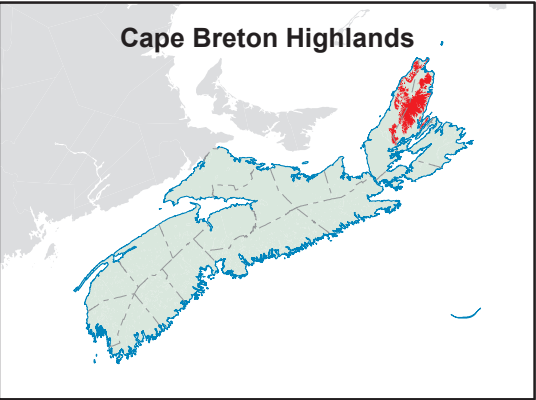
Map Notes

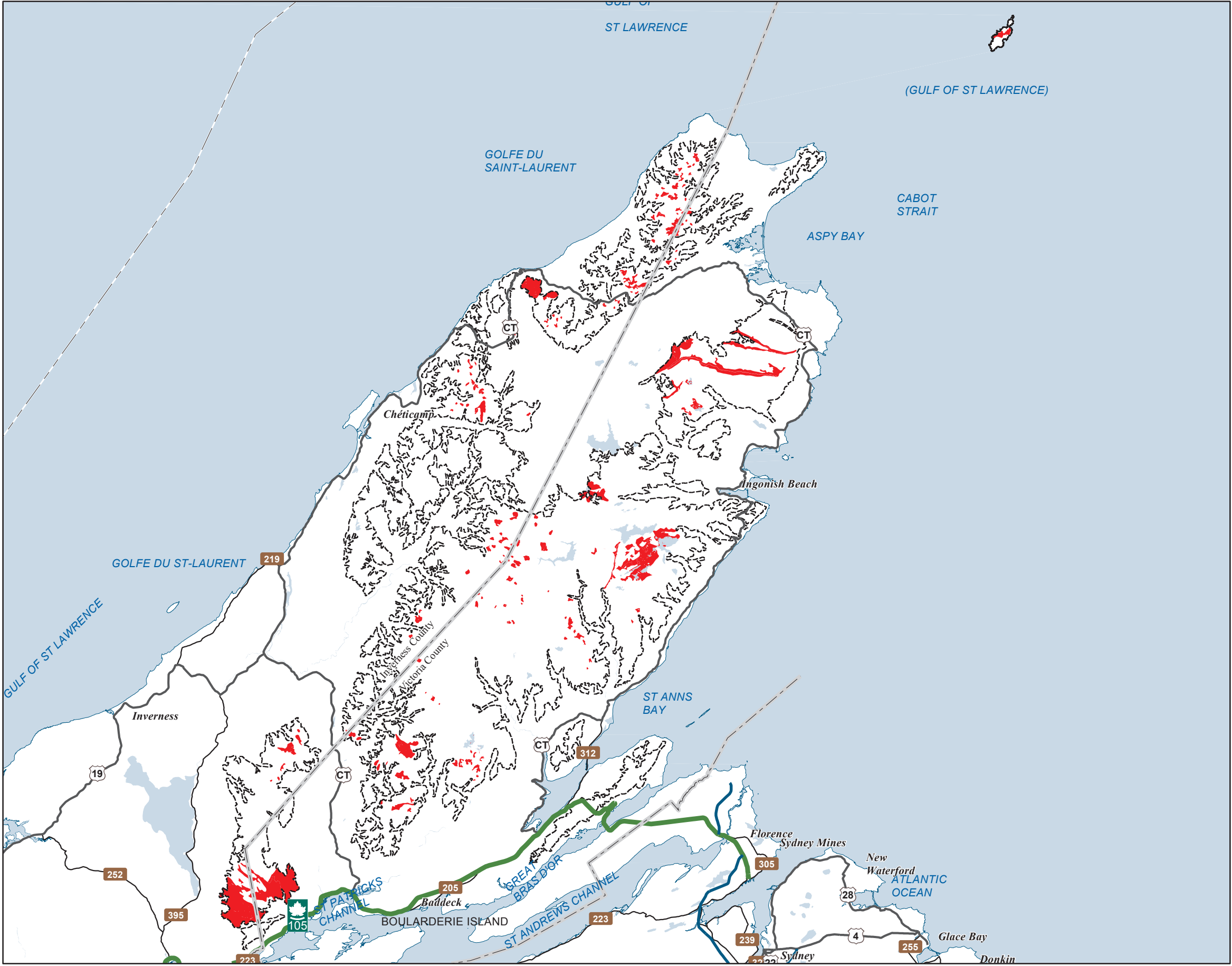
Base data derived from the Nova Scotia Topographic Database (NSTDB). Copyright Province of Nova Scotia. All rights reserved. Service Nova Scotia & Municipal Relations, Nova Scotia Geomatics Centre, 160 Willow St., Amherst, Nova Scotia. Species status and locations data from Atlantic Canada Conservation Data Centre.

Additional information derived from Nova Scotia Department of Natural Resources, Geographic Information Systems (GIS) databases.

Disclaimer

The information on this map may have come from a variety of government and non-government sources and is subject to change without notice. The Nova Scotia Department of Natural Resources accepts no liability for any errors, deficiencies, or faultson this map.

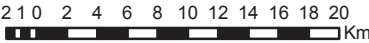




Ecological Landscape Analysis
Map 7
Rare Ecosections

Cape Breton Highlands - Ecodistrict 210

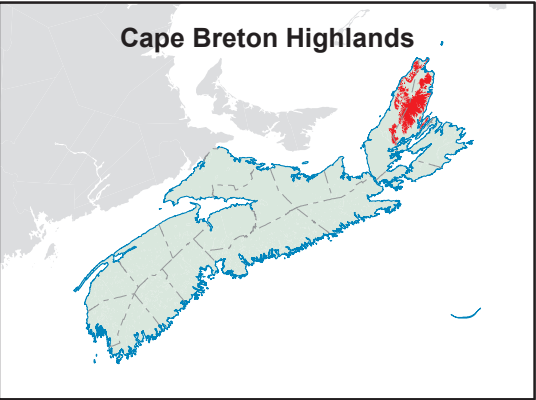
- Legend**
- Ecodistrict Boundary
 - Rare Ecosections
 - Water

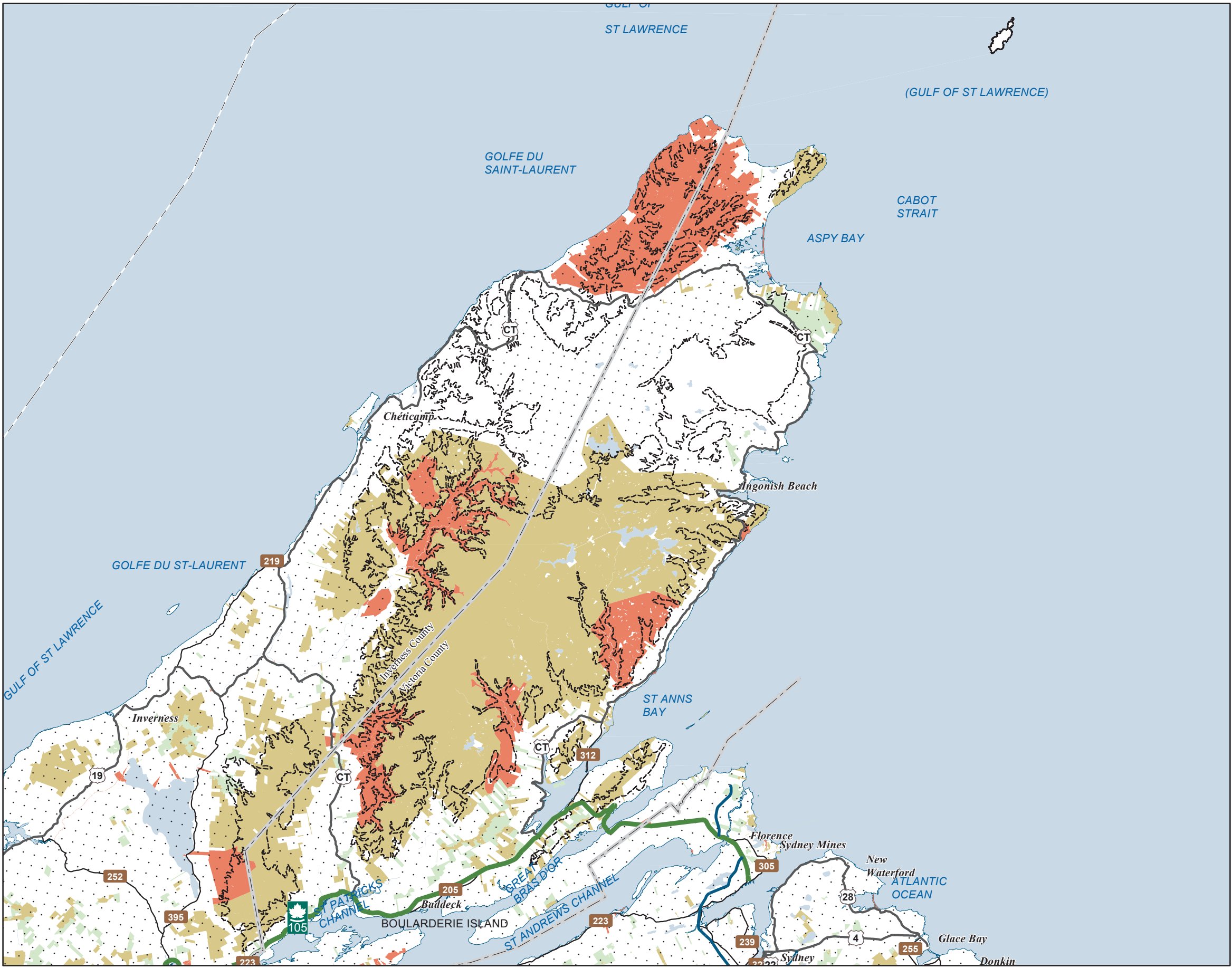


Map Notes
Base data derived from the Nova Scotia Topographic Database (NSTDB). Copyright Province of Nova Scotia. All rights reserved. The NSTDB is available from Service Nova Scotia & Municipal Relations, Nova Scotia Geomatics Centre, 160 Willow St., Amherst, Nova Scotia.

Additional information derived from Nova Scotia Department of Natural Resources, Geographic Information Systems (GIS) databases.

Disclaimer
The information on this map may have come from a variety of government and non-government sources and is subject to change without notice. The Nova Scotia Department of Natural Resources accepts no liability for any errors, deficiencies, or faults on this map.





Ecological Landscape Analysis
Map 8
IRM Classes

Cape Breton Highlands - Ecodistrict 210

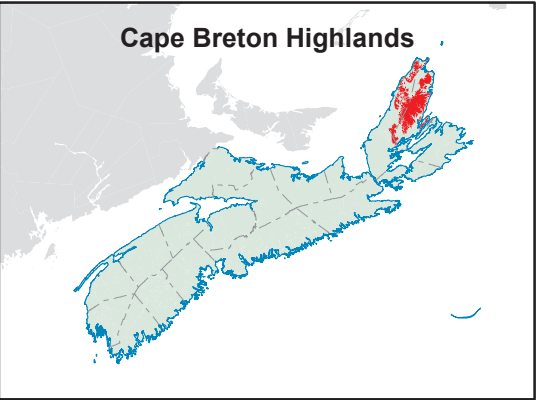
- Legend**
- Ecodistrict Boundary
 - C1 - General Resource Use
 - C2 - Multiple and Adaptive Resource Use
 - C3 - Protected and Limited Use
 - Water

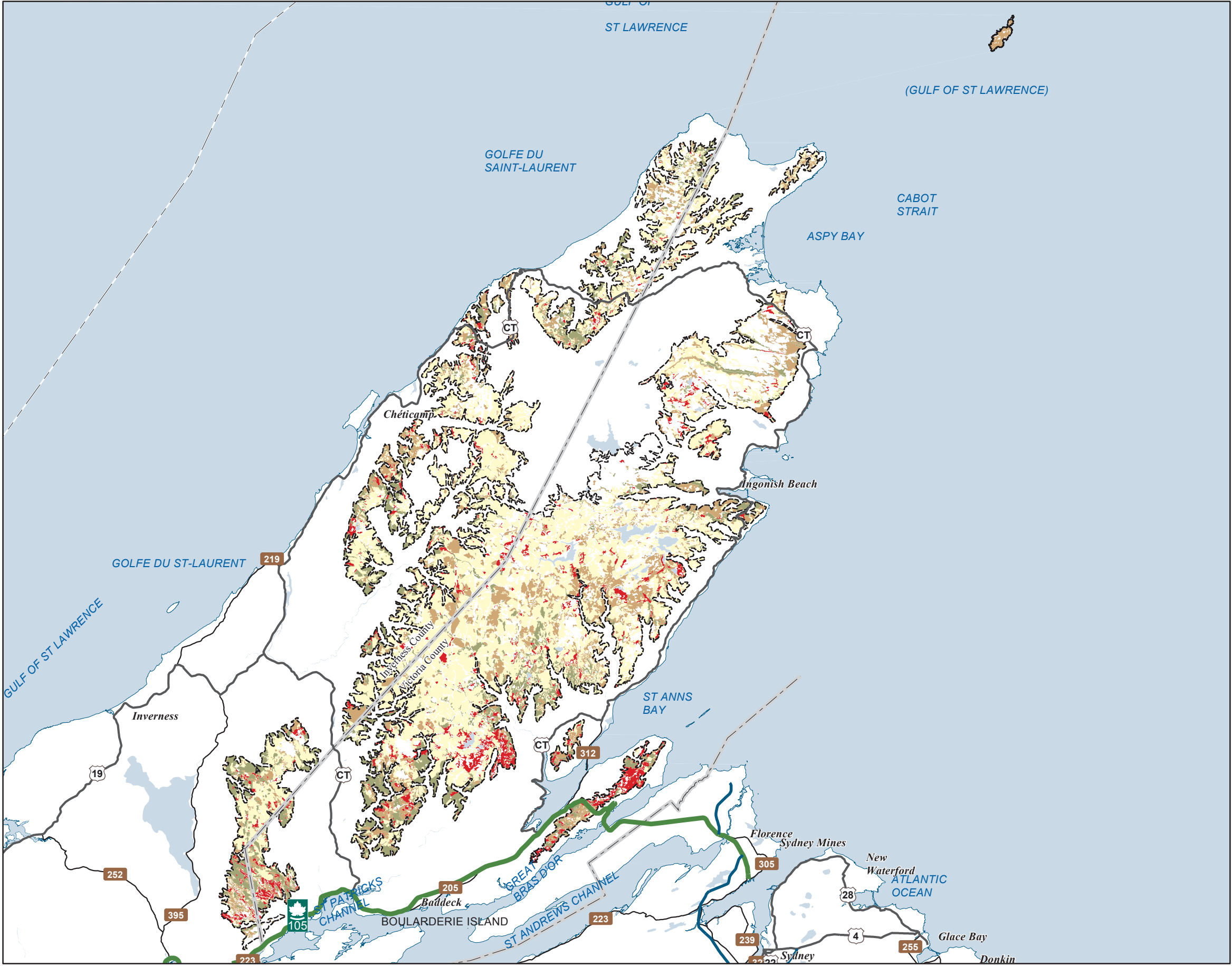


Map Notes
Base data derived from the Nova Scotia Topographic Database (NSTDB). Copyright Province of Nova Scotia. All rights reserved. The NSTDB is available from Service Nova Scotia & Municipal Relations, Nova Scotia Geomatics Centre, 160 Willow St., Amherst, Nova Scotia.

Additional information derived from Nova Scotia Department of Natural Resources, Geographic Information Systems (GIS) databases.

Disclaimer
The information on this map may have come from a variety of government and non-government sources and is subject to change without notice. The Nova Scotia Department of Natural Resources accepts no liability for any errors, deficiencies, or faults on this map.





Ecological Landscape Analysis
Map 9
Development Classes

Cape Breton Highlands - Ecodistrict 210

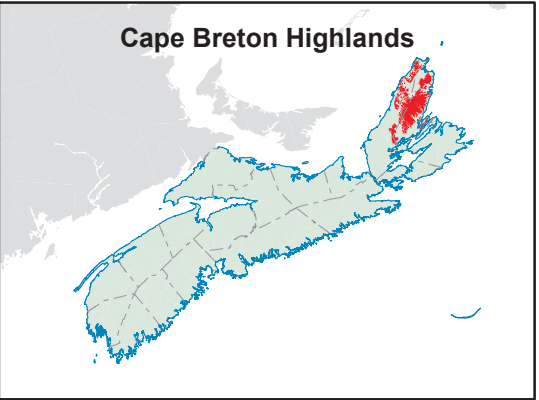
- Legend**
- Ecodistrict Boundary
 - Not forested
 - Establishment
 - Young Forest
 - Mature Timber
 - Multi-Aged / Old Forest
 - Water

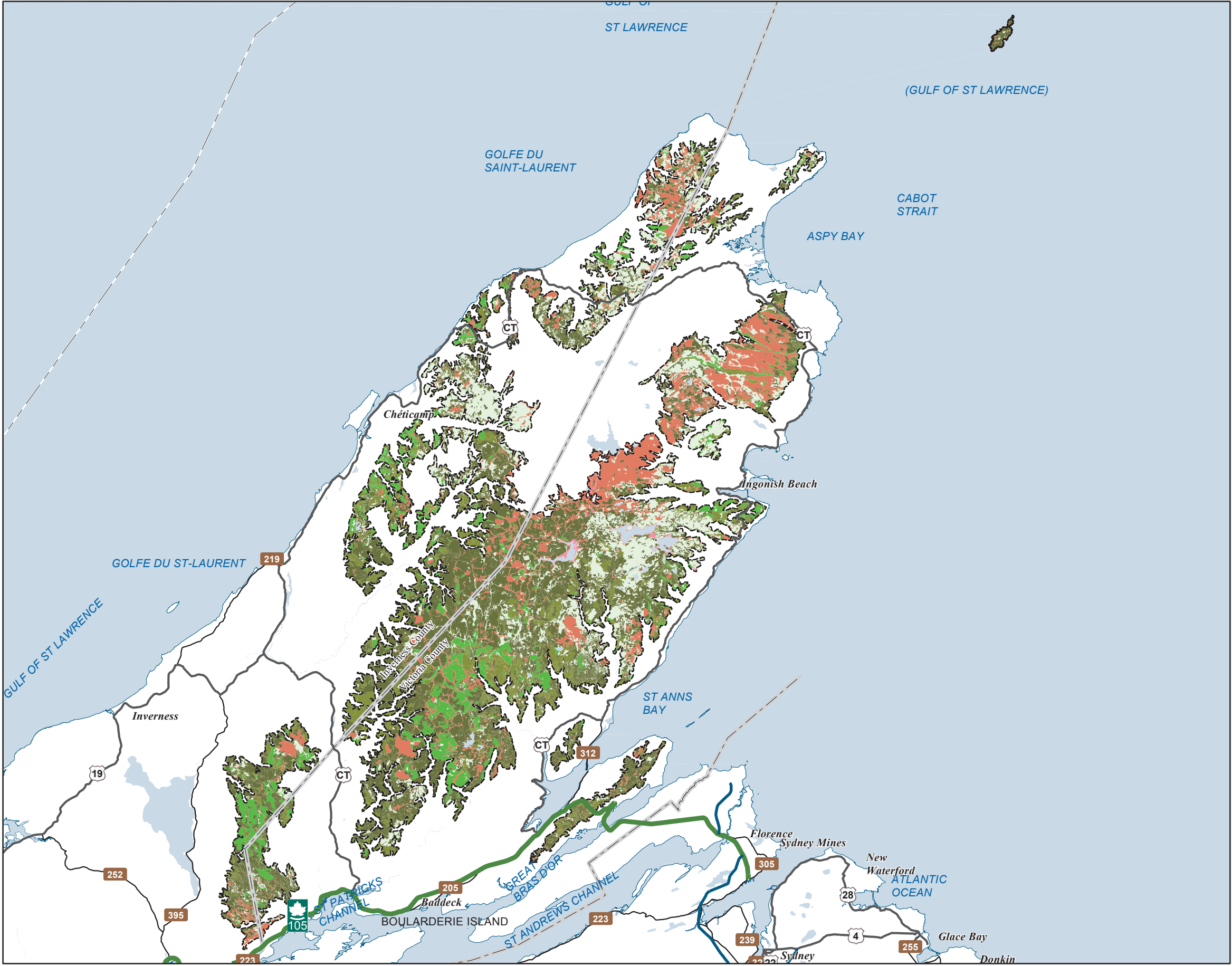


Map Notes
Base data derived from the Nova Scotia Topographic Database (NSTDB). Copyright Province of Nova Scotia. All rights reserved. The NSTDB is available from Service Nova Scotia & Municipal Relations, Nova Scotia Geomatics Centre, 160 Willow St., Amherst, Nova Scotia.

Additional information derived from Nova Scotia Department of Natural Resources, Geographic Information Systems (GIS) databases.

Disclaimer
The information on this map may have come from a variety of government and non-government sources and is subject to change without notice. The Nova Scotia Department of Natural Resources accepts no liability for any errors, deficiencies, or faults on this map.





Ecological Landscape Analysis

Map 10





Seral Stages

Cape Breton Highlands - Ecodistrict 210

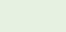



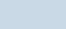
Legend


 Ecodistrict Boundary

Ecological Land Cover

-  Agriculture and Developed Vegetation
-  Shrublands and Herbaceous Vegetation
-  Sparse Vegetation and Naturally Unvegetated
-  Urban/Industrial Vegetation and Unvegetated

Seral Stage

-  Unclassified (e.g. recent cut)
-  Early
-  Mid
-  Late
-  Water

2 10 2 4 6 8 10 12 14 16 18 20
 Km

Map Notes

Base data derived from the Nova Scotia Topographic Database (NSTDB). Copyright Province of Nova Scotia. All rights reserved. The NSTDB is available from Service Nova Scotia & Municipal Relations, Nova Scotia Geomatics Centre, 160 Willow St., Amherst, Nova Scotia.

Additional information derived from Nova Scotia Department of Natural Resources, Geographic Information Systems (GIS) databases.

Disclaimer

The information on this map may have come from a variety of government and non-government sources and is subject to change without notice. The Nova Scotia Department of Natural Resources accepts no liability for any errors, deficiencies, or faults on this map.

