

**Ecological Landscape Analysis**  
**Map A**  
**Elements**

Victoria Lowlands - Ecodistrict 220

- Legend**
- Ecodistrict Boundary
  - Valley Corridors
  - Coastal Beach
  - Floodplain
  - Salt Marshes
  - Spruce Fir Hills and Hummocks
  - Tolerant Hardwood Hills
  - Wetlands
  - Water

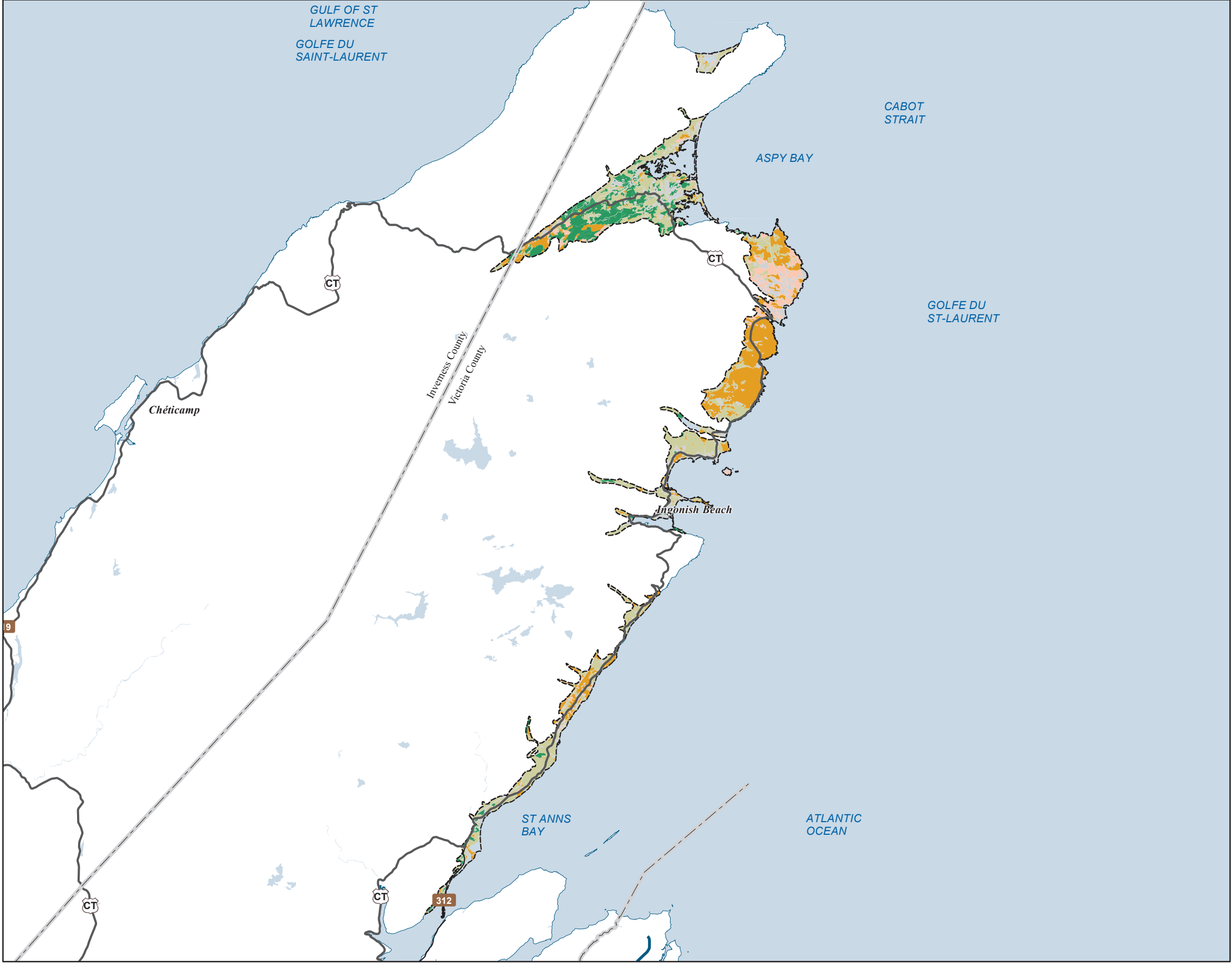


**Map Notes**  
Base data derived from the Nova Scotia Topographic Database (NSTDB). Copyright Province of Nova Scotia. All rights reserved. The NSTDB is available from Service Nova Scotia & Municipal Relations, Nova Scotia Geomatics Centre, 160 Willow St., Amherst, Nova Scotia.

Additional information derived from Nova Scotia Department of Natural Resources, Geographic Information Systems (GIS) databases.

**Disclaimer**  
The information on this map may have come from a variety of government and non-government sources and is subject to change without notice. The Nova Scotia Department of Natural Resources accepts no liability for any errors, deficiencies, or faults on this map.





**Ecological Landscape Analysis**  
**Map 1**  
**Land Capability**

Victoria Lowlands - Ecodistrict 220

**Legend**

- Ecodistrict Boundary
- 0 (No capability/converted)
- 1 - 3 (Low)
- 4 - (Low - Medium)
- 5 - (Medium)
- 6+ - (High)
- Water



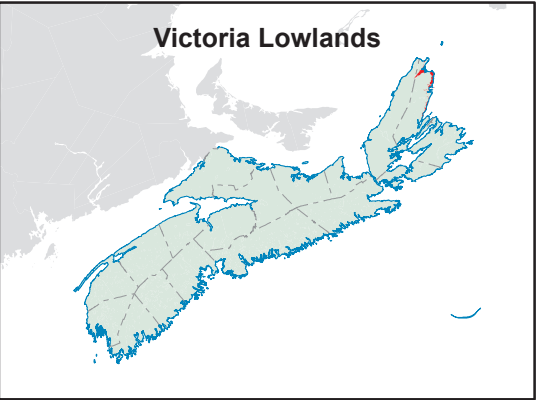
**Map Notes**

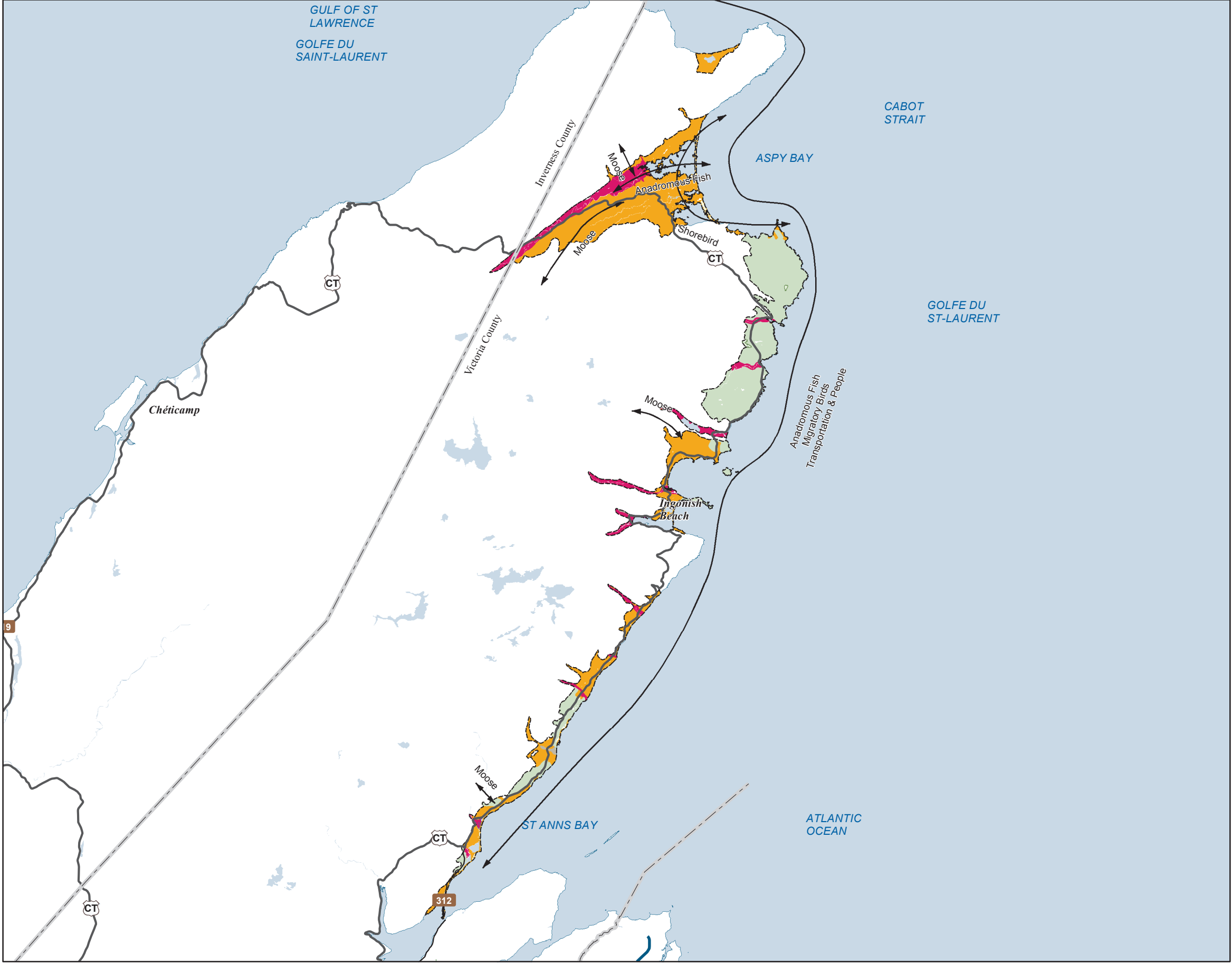
Base data derived from the Nova Scotia Topographic Database (NSTDB). Copyright Province of Nova Scotia. All rights reserved. The NSTDB is available from Service Nova Scotia & Municipal Relations, Nova Scotia Geomatics Centre, 160 Willow St., Amherst, Nova Scotia.

Additional information derived from Nova Scotia Department of Natural Resources, Geographic Information Systems (GIS) databases.

**Disclaimer**

The information on this map may have come from a variety of government and non-government sources and is subject to change without notice. The Nova Scotia Department of Natural Resources accepts no liability for any errors, deficiencies, or faults on this map.





**Ecological Landscape Analysis**  
**Map 2**  
**Elements and Flows**

Victoria Lowlands - Ecodistrict 220

- Legend**
- Ecodistrict Boundary
  - Flows
  - Coastal Beach
  - Floodplain
  - Salt Marshes
  - Spruce Fir Hills and Hummocks
  - Tolerant Hardwood Hills
  - Wetlands
  - Valley Corridors
  - Water



**Map Notes**

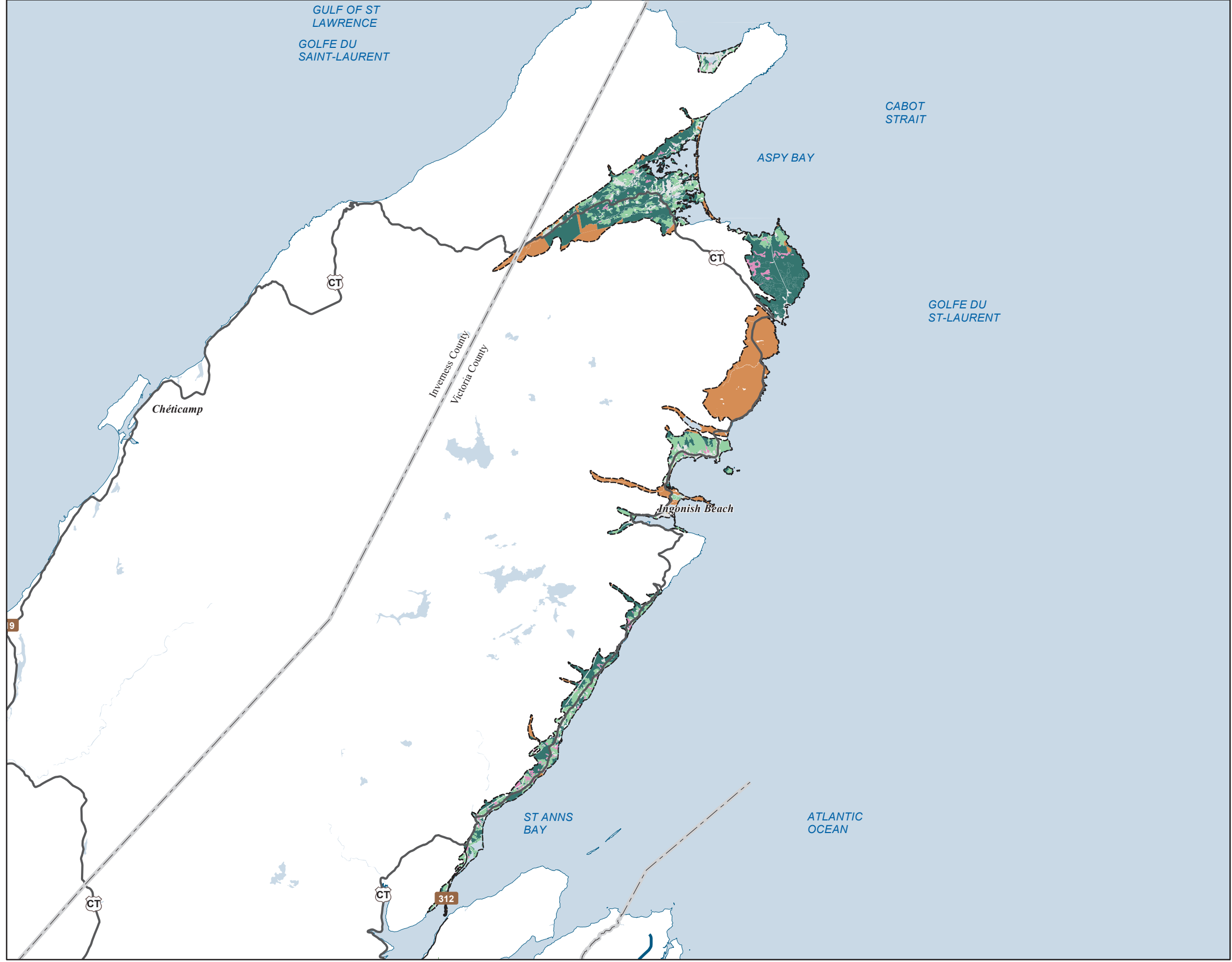
Base data derived from the Nova Scotia Topographic Database (NSTDB). Copyright Province of Nova Scotia. All rights reserved. The NSTDB is available from Service Nova Scotia & Municipal Relations, Nova Scotia Geomatics Centre, 160 Willow St., Amherst, Nova Scotia.

Additional information derived from Nova Scotia Department of Natural Resources, Geographic Information Systems (GIS) databases.

**Disclaimer**

The information on this map may have come from a variety of government and non-government sources and is subject to change without notice. The Nova Scotia Department of Natural Resources accepts no liability for any errors, deficiencies, or faults on this map.





**Ecological Landscape Analysis**  
**Map 3**  
**Ecological Emphasis Classes**

Victoria Lowlands - Ecodistrict 220

**Legend**

- Ecodistrict Boundary
- Reserve
- Extensive
- Intensive
- Converted
- Unclassified
- Water



**Map Notes**

Base data derived from the Nova Scotia Topographic Database (NSTDB). Copyright Province of Nova Scotia. All rights reserved. The NSTDB is available from Service Nova Scotia & Municipal Relations, Nova Scotia Geomatics Centre, 160 Willow St., Amherst, Nova Scotia.

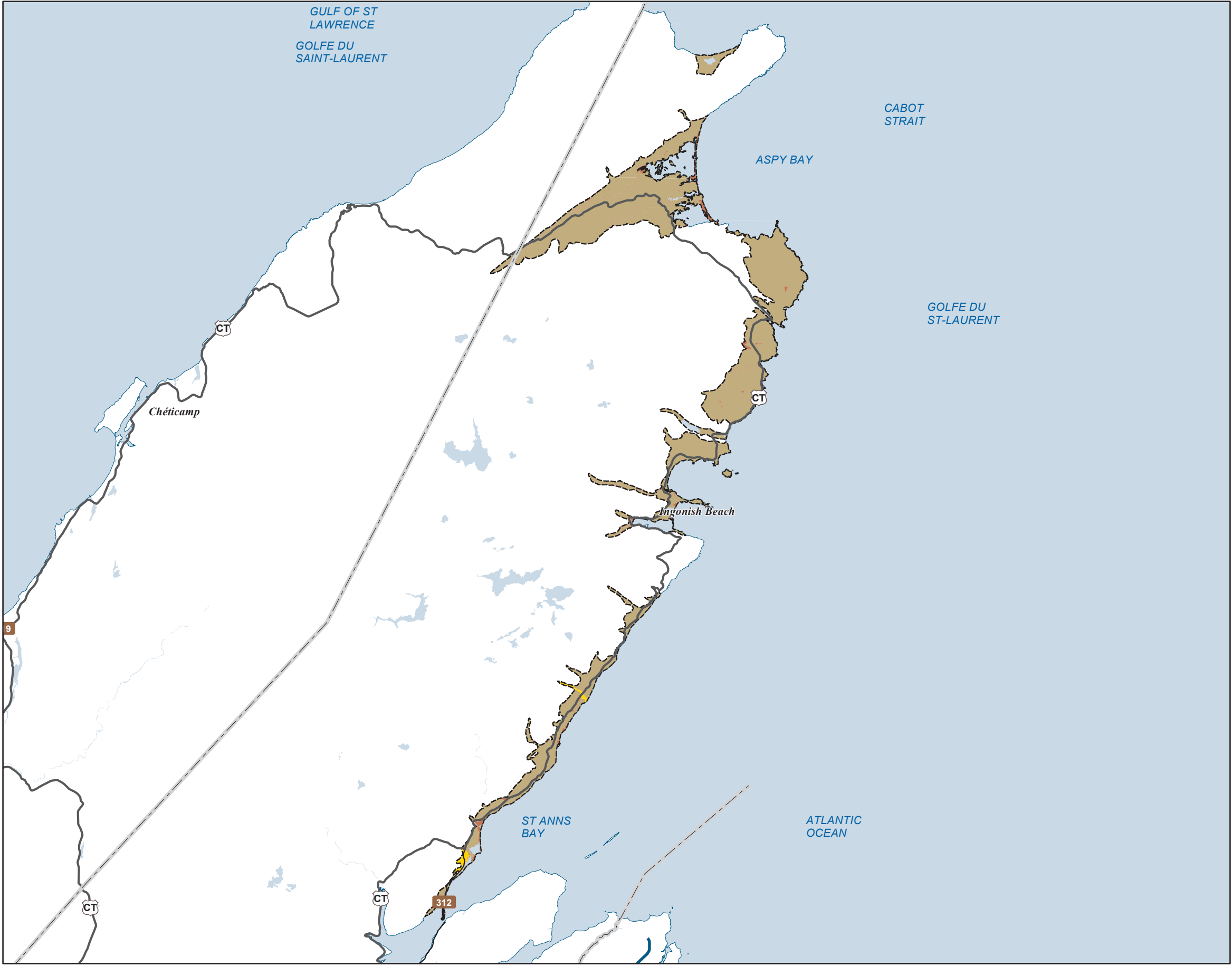
Additional information derived from Nova Scotia Department of Natural Resources, Geographic Information Systems (GIS) databases.

**Disclaimer**

The information on this map may have come from a variety of government and non-government sources and is subject to change without notice. The Nova Scotia Department of Natural Resources accepts no liability for any errors, deficiencies, or faults on this map.



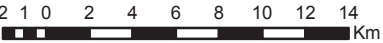




Ecological Landscape Analysis  
**Map 4**  
**Natural Disturbances**  
Victoria Lowlands - Ecodistrict 220

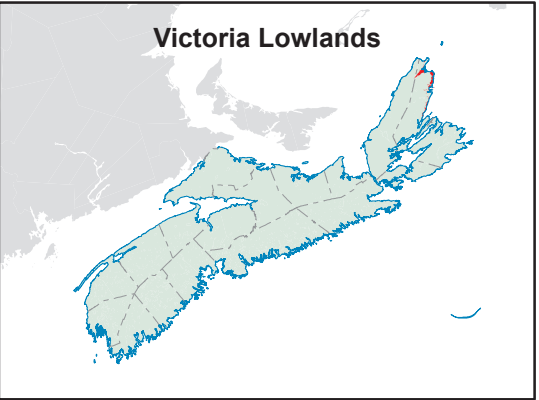
**Legend**

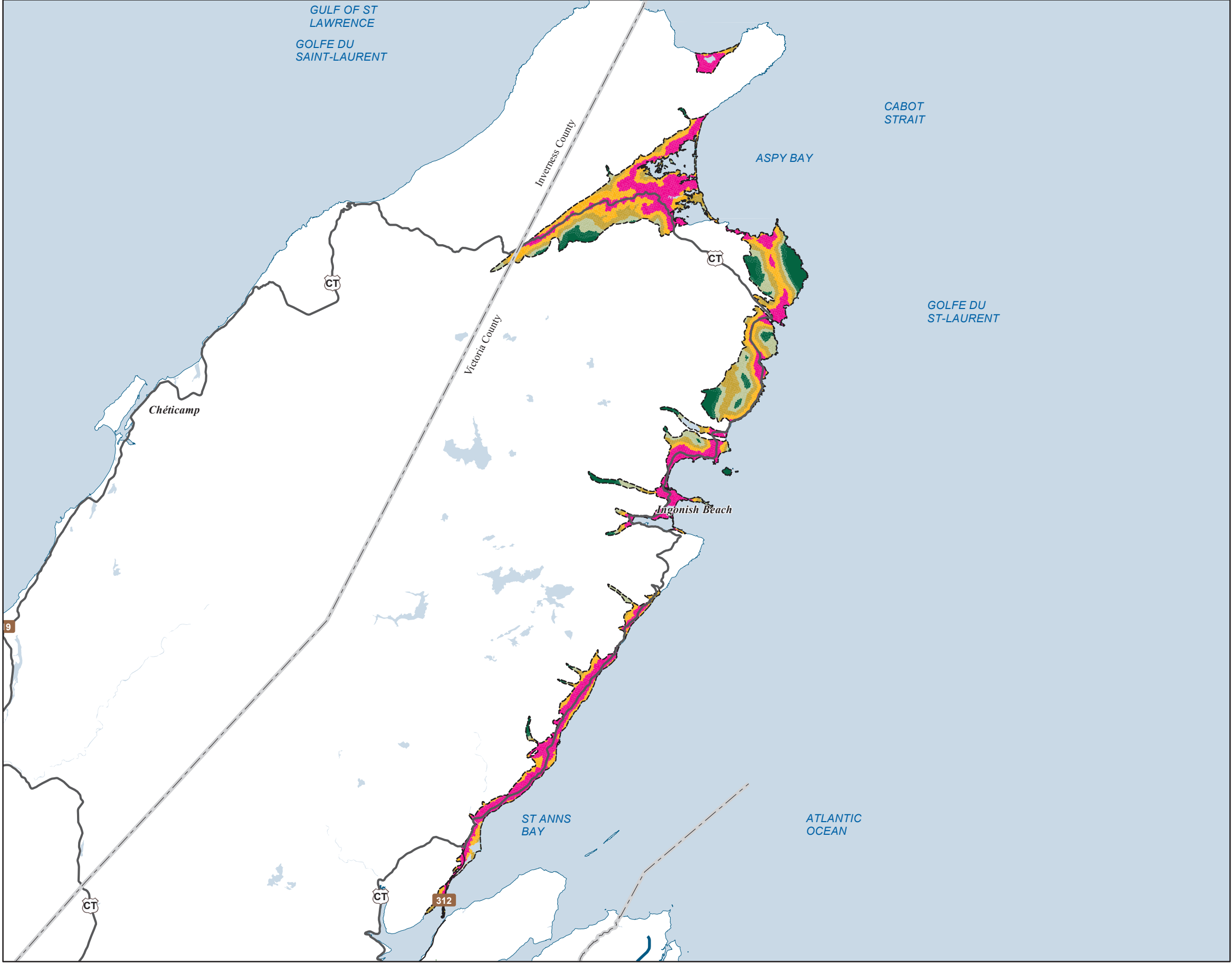
- Ecodistrict Boundary
- Frequent
- Gap
- Infrequent
- Open Seral
- Water



**Map Notes**  
Base data derived from the Nova Scotia Topographic Database (NSTDB). Copyright Province of Nova Scotia. All rights reserved. The NSTDB is available from Service Nova Scotia & Municipal Relations, Nova Scotia Geomatics Centre, 160 Willow St., Amherst, Nova Scotia.  
  
Additional information derived from Nova Scotia Department of Natural Resources, Geographic Information Systems (GIS) databases.

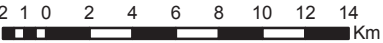
**Disclaimer**  
The information on this map may have come from a variety of government and non-government sources and is subject to change without notice. The Nova Scotia Department of Natural Resources accepts no liability for any errors, deficiencies, or faults on this map.





Ecological Landscape Analysis  
Map 5  
Road Index  
Victoria Lowlands - Ecodistrict 220

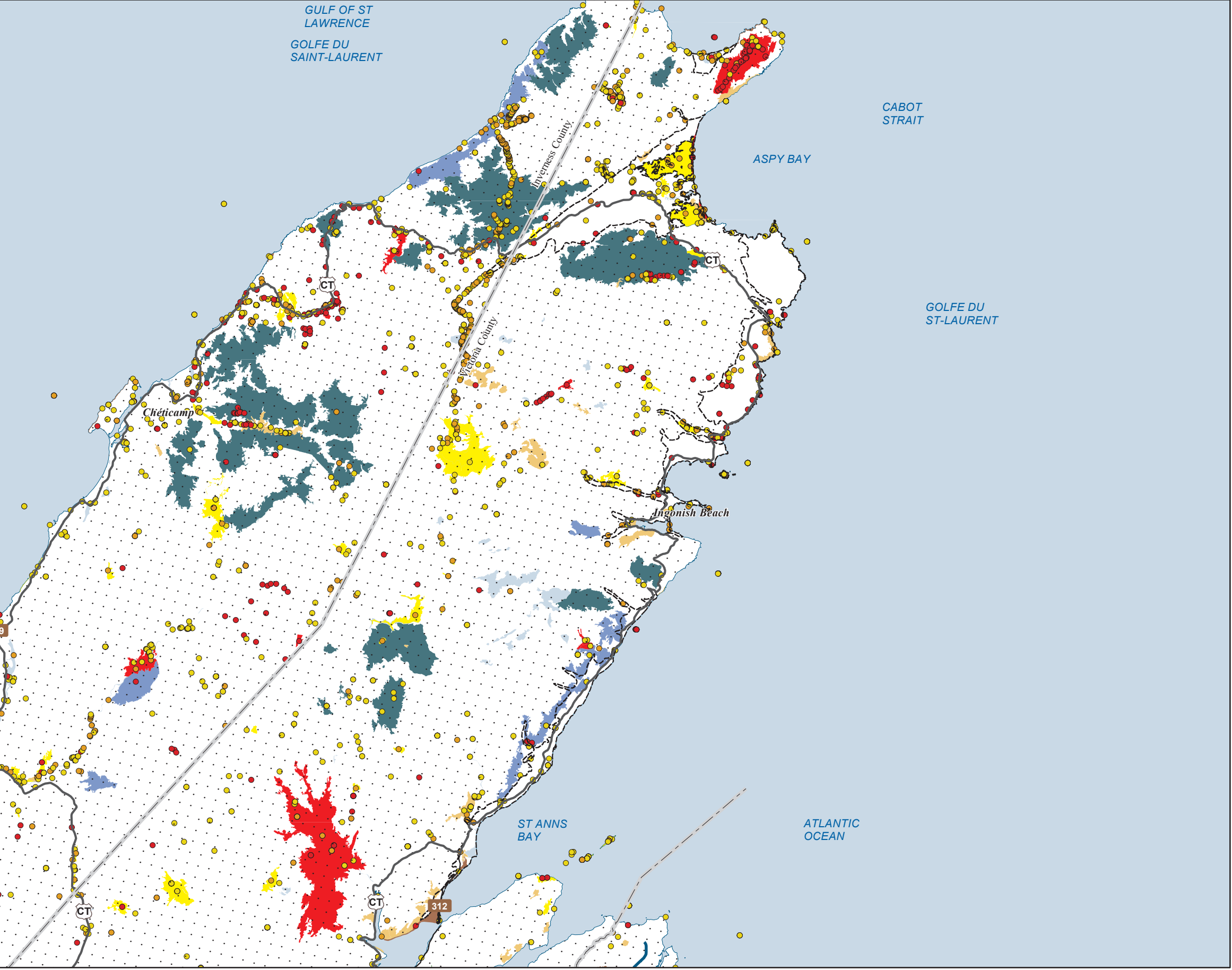
- Legend**
- Ecodistrict Boundary
  - Remote
  - Forest Resource
  - Mixed Rural
  - Agriculture Surburban
  - Urban
  - Water



**Map Notes**  
Base data derived from the Nova Scotia Topographic Database (NSTDB). Copyright Province of Nova Scotia. All rights reserved. The NSTDB is available from Service Nova Scotia & Municipal Relations, Nova Scotia Geomatics Centre, 160 Willow St., Amherst, Nova Scotia.  
Additional information derived from Nova Scotia Department of Natural Resources, Geographic Information Systems (GIS) databases.

**Disclaimer**  
The information on this map may have come from a variety of government and non-government sources and is subject to change without notice. The Nova Scotia Department of Natural Resources accepts no liability for any errors, deficiencies, or faults on this map.





Date: 6/25/2015

**Ecological Landscape Analysis**  
**Map 6**  
**Special Occurrences - Species**

Victoria Lowlands - Ecodistrict 220

**Legend**

- Ecodistrict Boundary
- Outside of Ecodistrict

**ACCDC Occurrences**

- Species At Risk
- Species of Conservation Concern - May Be At Risk
- Species of Conservation Concern - Sensitive

**NS DNR Significant Habitat**

- Species at risk
- Species of conservation concern
- Deer wintering
- Migratory bird
- Moose wintering
- Other significant habitat
- Water



**Map Notes**

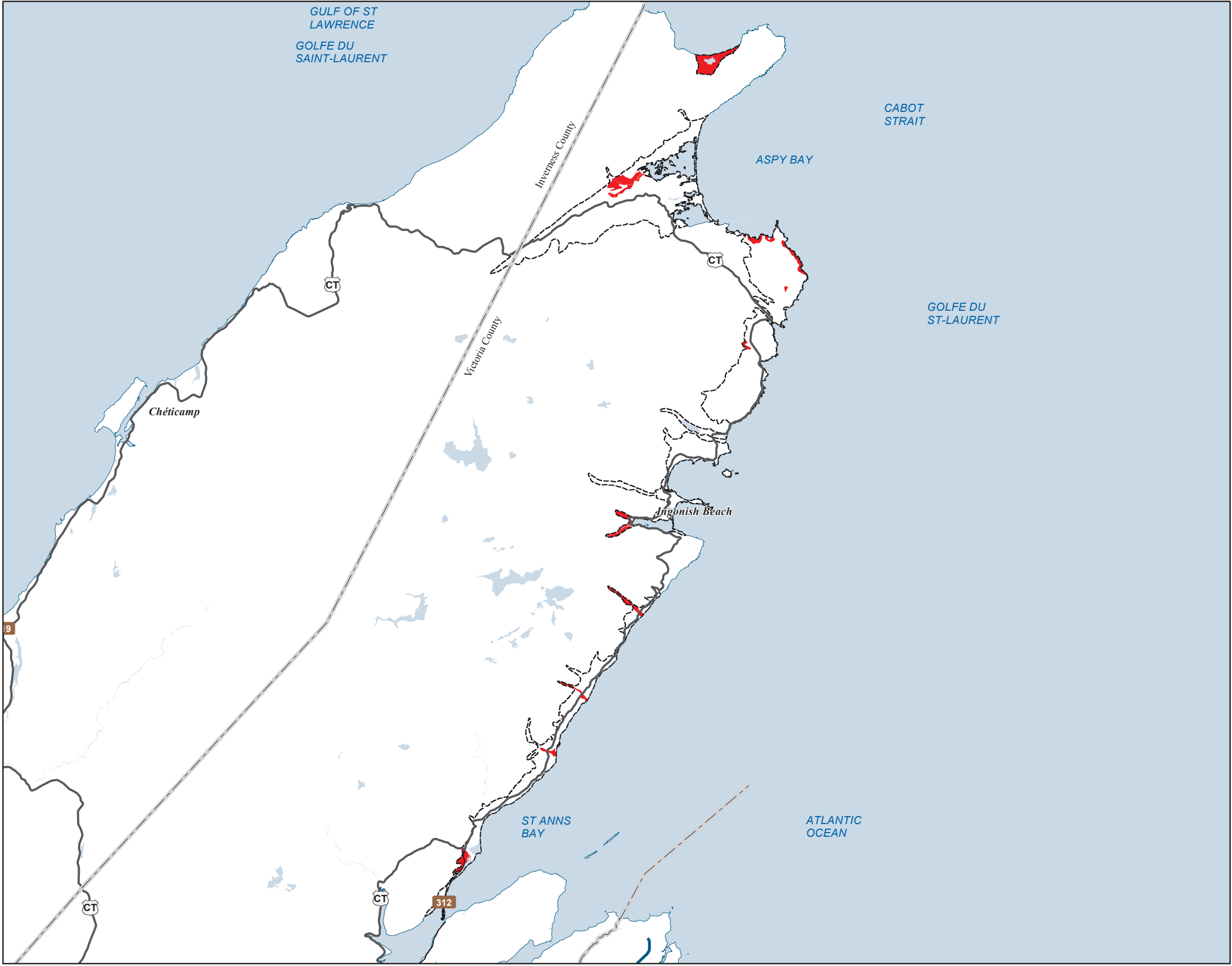
Base data derived from the Nova Scotia Topographic Database (NSTDB). Copyright Province of Nova Scotia. All rights reserved. Service Nova Scotia & Municipal Relations, Nova Scotia Geomatics Centre, 160 Willow St., Amherst, Nova Scotia. Species status and locations data from Atlantic Canada Conservation Data Centre.

Additional information derived from Nova Scotia Department of Natural Resources, Geographic Information Systems (GIS) databases.

**Disclaimer**

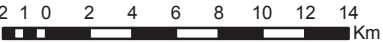
The information on this map may have come from a variety of government and non-government sources and is subject to change without notice. The Nova Scotia Department of Natural Resources accepts no liability for any errors, deficiencies, or faults on this map.





Ecological Landscape Analysis  
Map 7  
Rare Ecosections  
Victoria Lowlands - Ecodistrict 220

- Legend**
- Ecodistrict Boundary
  - Rare Ecosections
  - Water



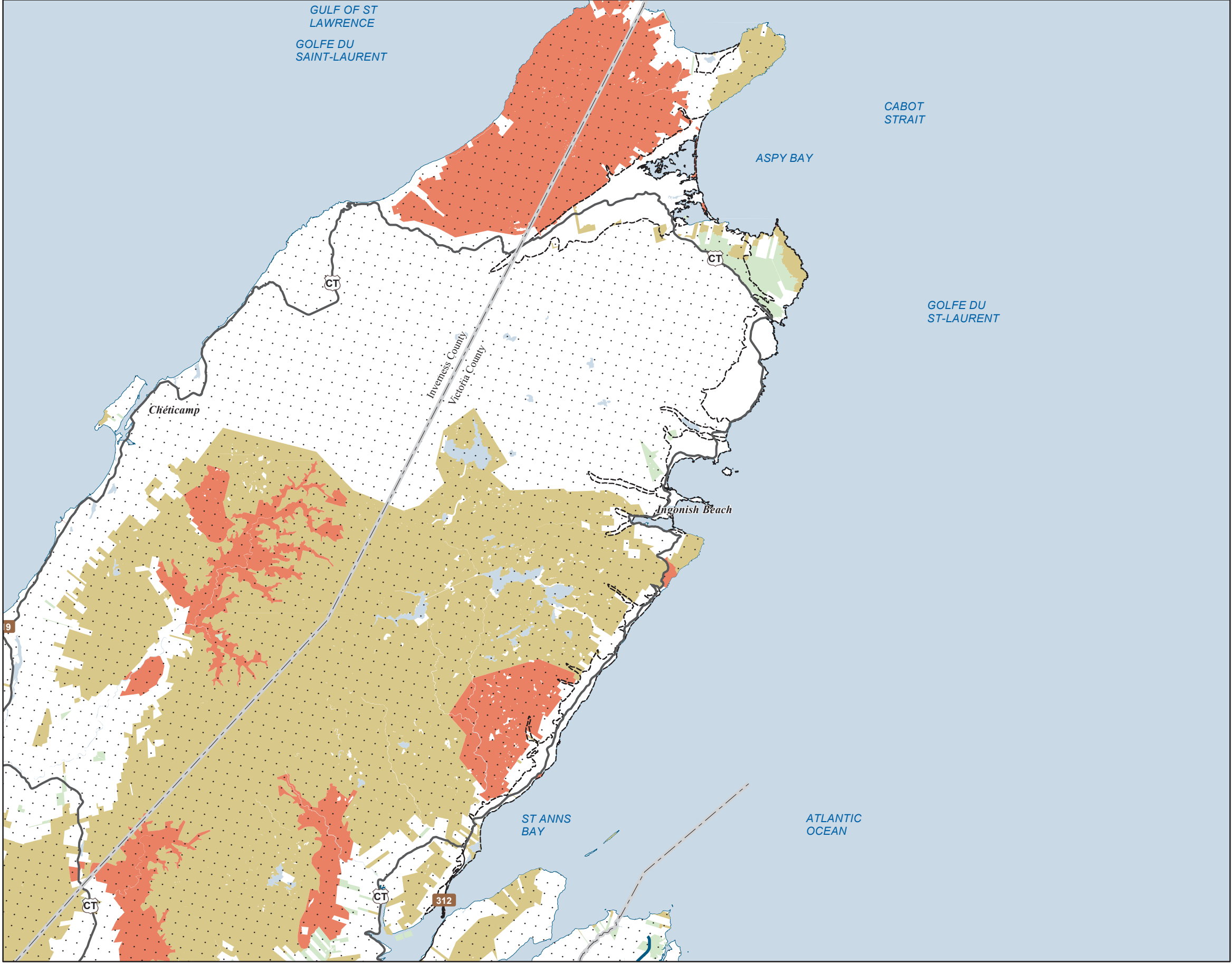
**Map Notes**  
Base data derived from the Nova Scotia Topographic Database (NSTDB). Copyright Province of Nova Scotia. All rights reserved. The NSTDB is available from Service Nova Scotia & Municipal Relations, Nova Scotia Geomatics Centre, 160 Willow St., Amherst, Nova Scotia.

Additional information derived from Nova Scotia Department of Natural Resources, Geographic Information Systems (GIS) databases.

**Disclaimer**  
The information on this map may have come from a variety of government and non-government sources and is subject to change without notice. The Nova Scotia Department of Natural Resources accepts no liability for any errors, deficiencies, or faults on this map.







**Ecological Landscape Analysis**  
**Map 8**  
**IRM Classes**

Victoria Lowlands - Ecodistrict 220

- Legend**
- Ecodistrict Boundary
  - C1 - General Resource Use
  - C2 - Multiple and Adaptive Resource Use
  - C3 - Protected and Limited Use
  - Water



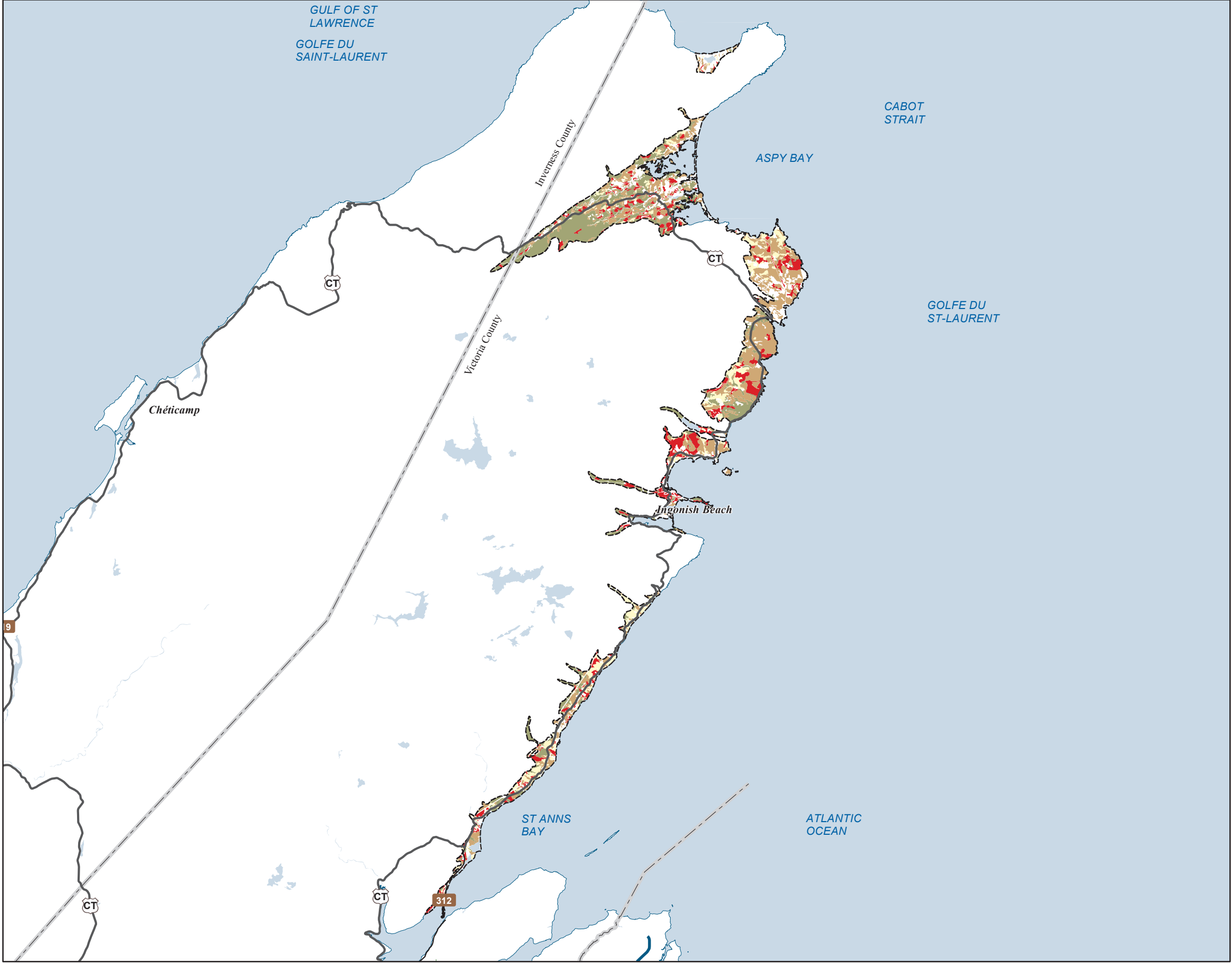
**Map Notes**  
Base data derived from the Nova Scotia Topographic Database (NSTDB). Copyright Province of Nova Scotia. All rights reserved. The NSTDB is available from Service Nova Scotia & Municipal Relations, Nova Scotia Geomatics Centre, 160 Willow St., Amherst, Nova Scotia.

Additional information derived from Nova Scotia Department of Natural Resources, Geographic Information Systems (GIS) databases.

**Disclaimer**  
The information on this map may have come from a variety of government and non-government sources and is subject to change without notice. The Nova Scotia Department of Natural Resources accepts no liability for any errors, deficiencies, or faults on this map.

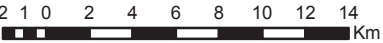






Ecological Landscape Analysis  
Map 9  
Development Classes  
Victoria Lowlands - Ecodistrict 220

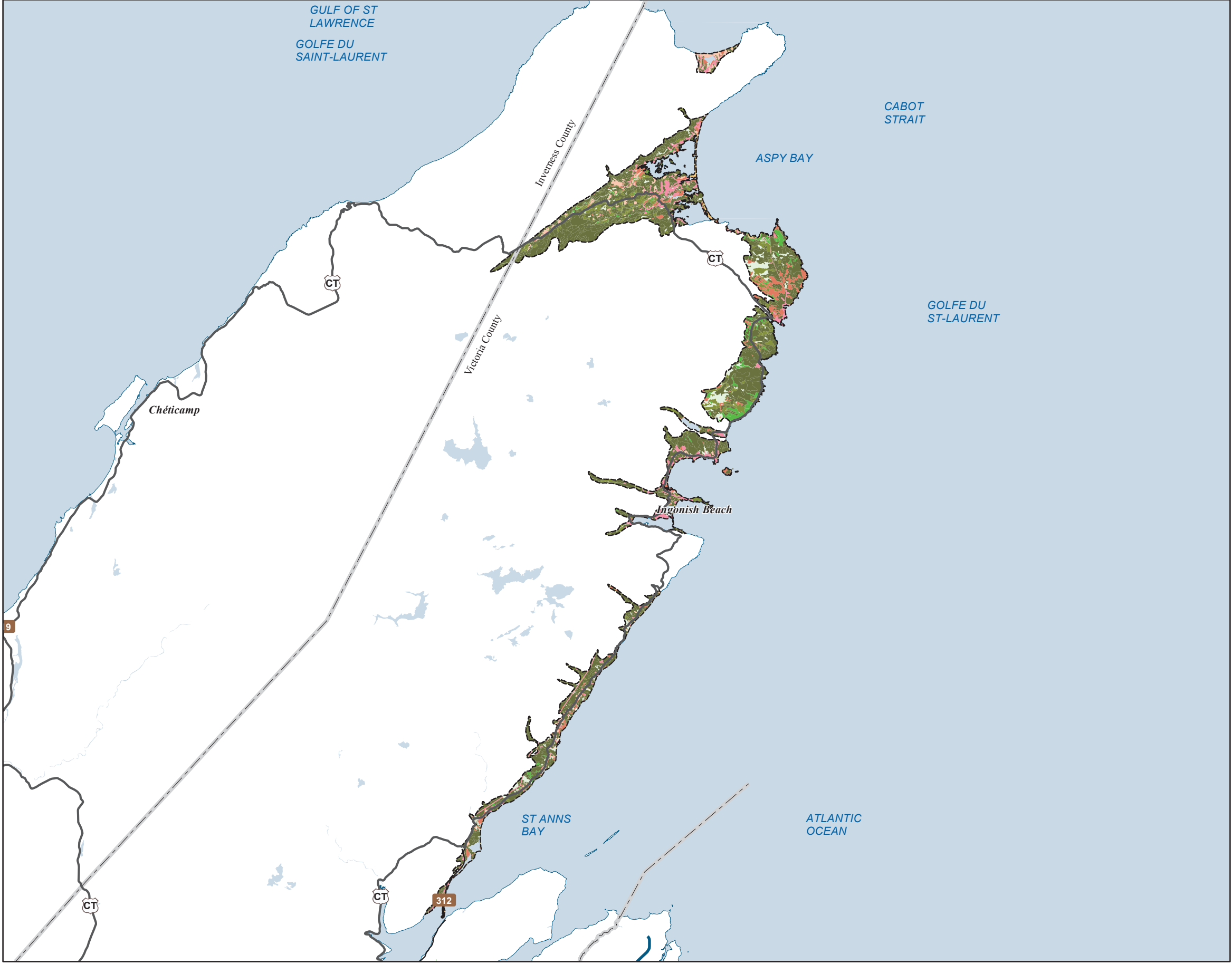
- Legend**
- Ecodistrict Boundary
  - Not forested
  - Establishment
  - Young Forest
  - Mature Timber
  - Multi-Aged / Old Forest
  - Water



**Map Notes**  
Base data derived from the Nova Scotia Topographic Database (NSTDB). Copyright Province of Nova Scotia. All rights reserved. The NSTDB is available from Service Nova Scotia & Municipal Relations, Nova Scotia Geomatics Centre, 160 Willow St., Amherst, Nova Scotia.  
Additional information derived from Nova Scotia Department of Natural Resources, Geographic Information Systems (GIS) databases.

**Disclaimer**  
The information on this map may have come from a variety of government and non-government sources and is subject to change without notice. The Nova Scotia Department of Natural Resources accepts no liability for any errors, deficiencies, or faults on this map.





Ecological Landscape Analysis  
Map 10  
Seral Stages

Victoria Lowlands - Ecodistrict 220

Legend

- Ecodistrict Boundary
- Ecological Land Cover**
- Agriculture and Developed Vegetation
  - Shrublands and Herbaceous Vegetation
  - Sparse Vegetation and Naturally Unvegetated
  - Urban/Industrial Vegetation and Unvegetated
- Seral Stage**
- Unclassified (e.g. recent cut)
  - Early
  - Mid
  - Late
  - Water



**Map Notes**  
Base data derived from the Nova Scotia Topographic Database (NSTDB). Copyright Province of Nova Scotia. All rights reserved. The NSTDB is available from Service Nova Scotia & Municipal Relations, Nova Scotia Geomatics Centre, 160 Willow St., Amherst, Nova Scotia.

Additional information derived from Nova Scotia Department of Natural Resources, Geographic Information Systems (GIS) databases.

**Disclaimer**  
The information on this map may have come from a variety of government and non-government sources and is subject to change without notice. The Nova Scotia Department of Natural Resources accepts no liability for any errors, deficiencies, or faults on this map.

