

**Ecological Landscape Analysis**  
**Map A**  
**Elements**

Pictou Antigonish Highlands - Ecodistrict 330

**Legend**

- Ecodistrict Boundary
- Valley Corridors
- Floodplain
- Red and Black Spruce Hummocks
- Tolerant Hardwood Hills
- Tolerant Mixedwood Hills
- Tolerant Mixedwood Slopes
- Wetlands
- Water



**Map Notes**

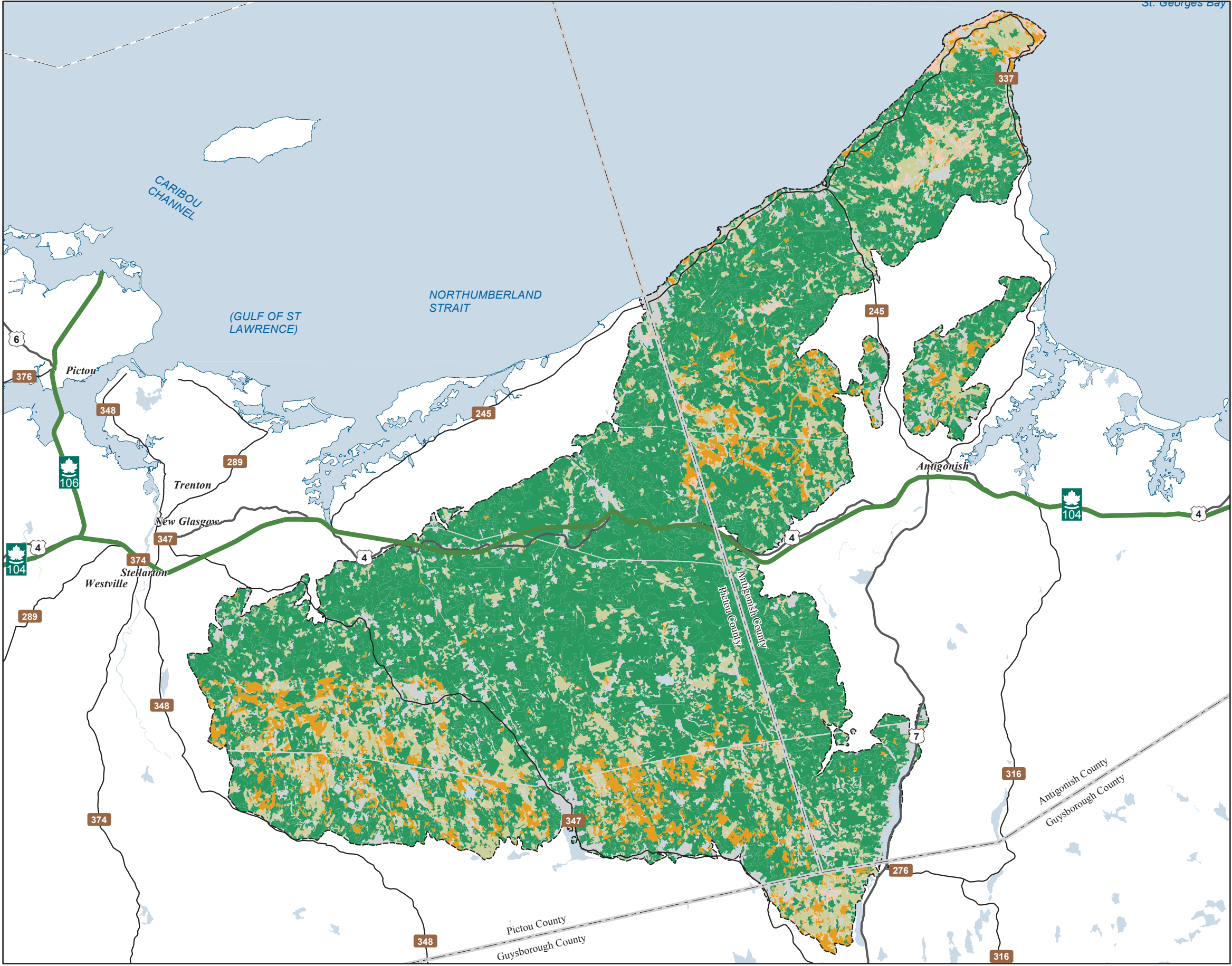
Base data derived from the Nova Scotia Topographic Database (NSTDB). Copyright Province of Nova Scotia. All rights reserved. The NSTDB is available from Service Nova Scotia & Municipal Relations, Nova Scotia Geomatics Centre, 160 Willow St., Amherst, Nova Scotia.

Additional information derived from Nova Scotia Department of Natural Resources, Geographic Information Systems (GIS) databases.

**Disclaimer**

The information on this map may have come from a variety of government and non-government sources and is subject to change without notice. The Nova Scotia Department of Natural Resources accepts no liability for any errors, deficiencies, or faults on this map.





**Ecological Landscape Analysis**  
**Map 1**  
**Land Capability**

Pictou Antigonish Highlands - Ecodistrict 330

**Legend**

- Ecodistrict Boundary
- 0 (No capability/converted)
- 1 - 3 (Low)
- 4 - (Low - Medium)
- 5 - (Medium)
- 6+ - (High)
- Water



**Map Notes**

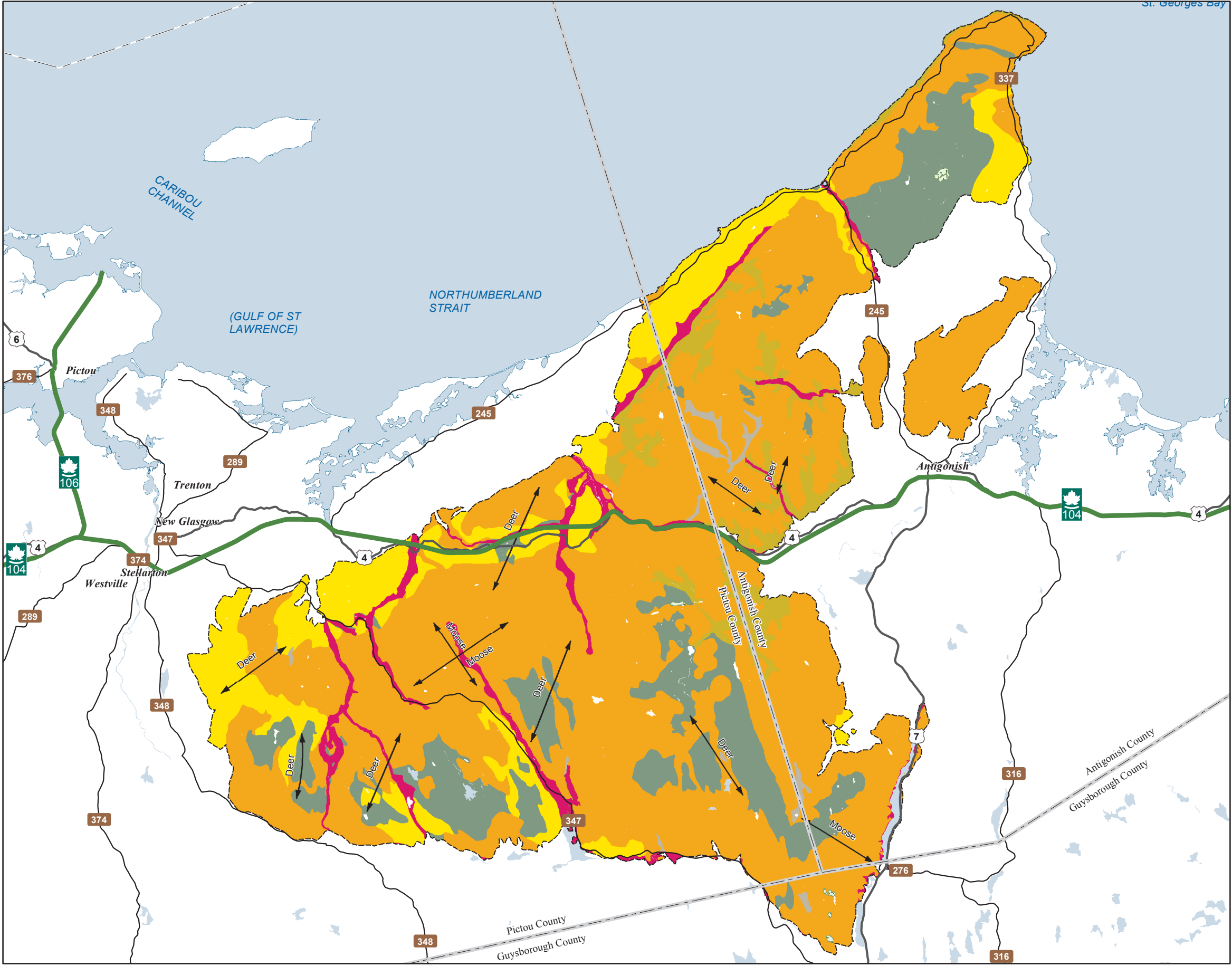
Base data derived from the Nova Scotia Topographic Database (NSTDB). Copyright Province of Nova Scotia. All rights reserved. The NSTDB is available from Service Nova Scotia & Municipal Relations, Nova Scotia Geomatics Centre, 160 Willow St., Amherst, Nova Scotia.

Additional information derived from Nova Scotia Department of Natural Resources, Geographic Information Systems (GIS) databases.

**Disclaimer**

The information on this map may have come from a variety of government and non-government sources and is subject to change without notice. The Nova Scotia Department of Natural Resources accepts no liability for any errors, deficiencies, or faults on this map.





Ecological Landscape Analysis  
Map 2  
Elements and Flows

Pictou Antigonish Highlands - Ecodistrict 330

Legend

- Ecodistrict Boundary
- Flows
- Floodplain
- Red and Black Spruce Hummocks
- Tolerant Hardwood Hills
- Tolerant Mixedwood Hills
- Tolerant Mixedwood Slopes
- Wetlands
- Valley Corridors
- Water



Map Notes

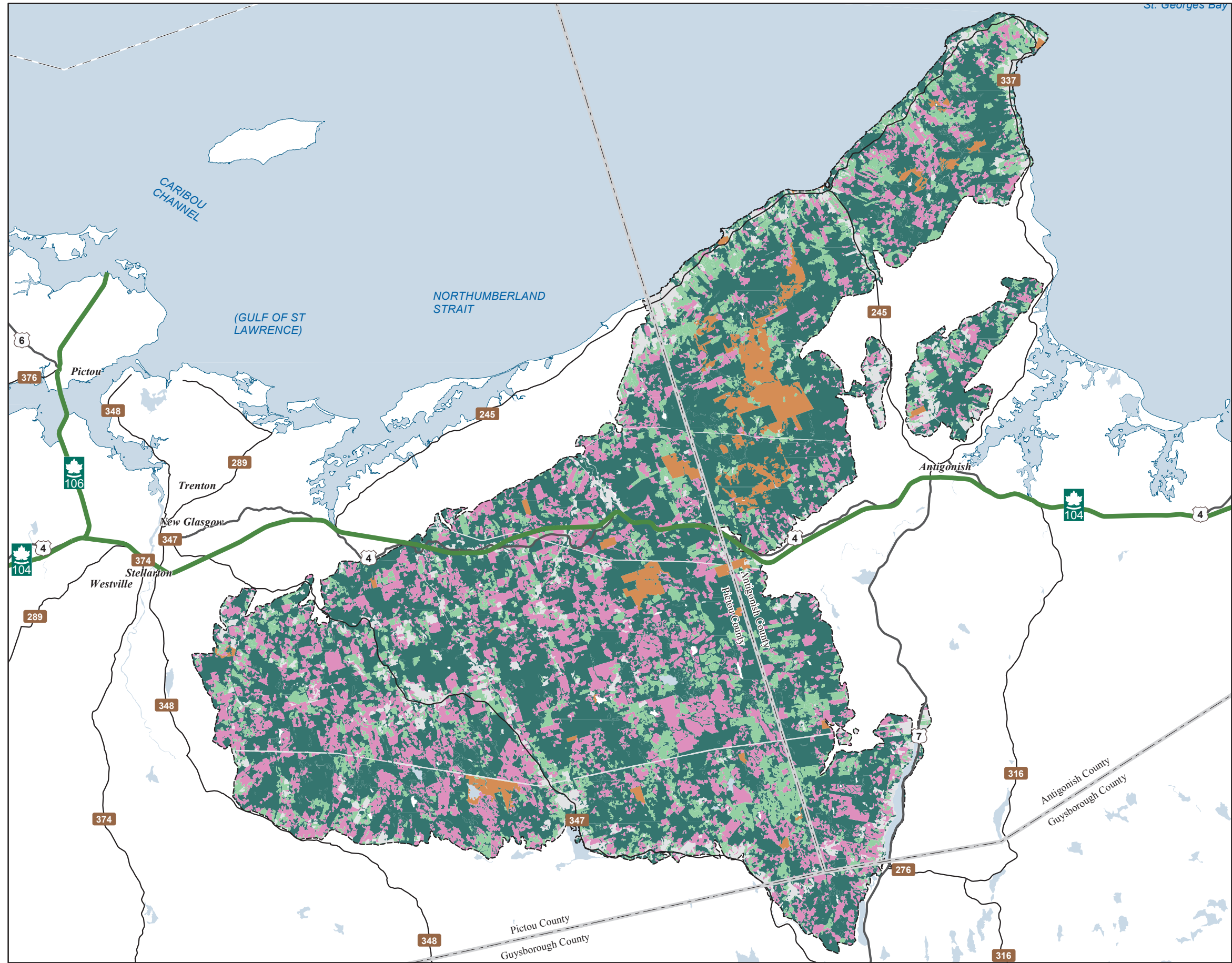
Base data derived from the Nova Scotia Topographic Database (NSTDB). Copyright Province of Nova Scotia. All rights reserved. The NSTDB is available from Service Nova Scotia & Municipal Relations, Nova Scotia Geomatics Centre, 160 Willow St., Amherst, Nova Scotia.

Additional information derived from Nova Scotia Department of Natural Resources, Geographic Information Systems (GIS) databases.

Disclaimer

The information on this map may have come from a variety of government and non-government sources and is subject to change without notice. The Nova Scotia Department of Natural Resources accepts no liability for any errors, deficiencies, or faults on this map.





**Ecological Landscape Analysis**  
**Map 3**  
**Ecological Emphasis Classes**

Pictou Antigonish Highlands - Ecodistrict 330

- Legend**
- Ecodistrict Boundary
  - Reserve
  - Extensive
  - Intensive
  - Converted
  - Unclassified
  - Water



**Map Notes**  
Base data derived from the Nova Scotia Topographic Database (NSTDB). Copyright Province of Nova Scotia. All rights reserved. The NSTDB is available from Service Nova Scotia & Municipal Relations, Nova Scotia Geomatics Centre, 160 Willow St., Amherst, Nova Scotia.

Additional information derived from Nova Scotia Department of Natural Resources, Geographic Information Systems (GIS) databases.

**Disclaimer**  
The information on this map may have come from a variety of government and non-government sources and is subject to change without notice. The Nova Scotia Department of Natural Resources accepts no liability for any errors, deficiencies, or faults on this map.





**Ecological Landscape Analysis**  
**Map 4**  
**Natural Disturbances**

Pictou Antigonish Highlands - Ecodistrict 330

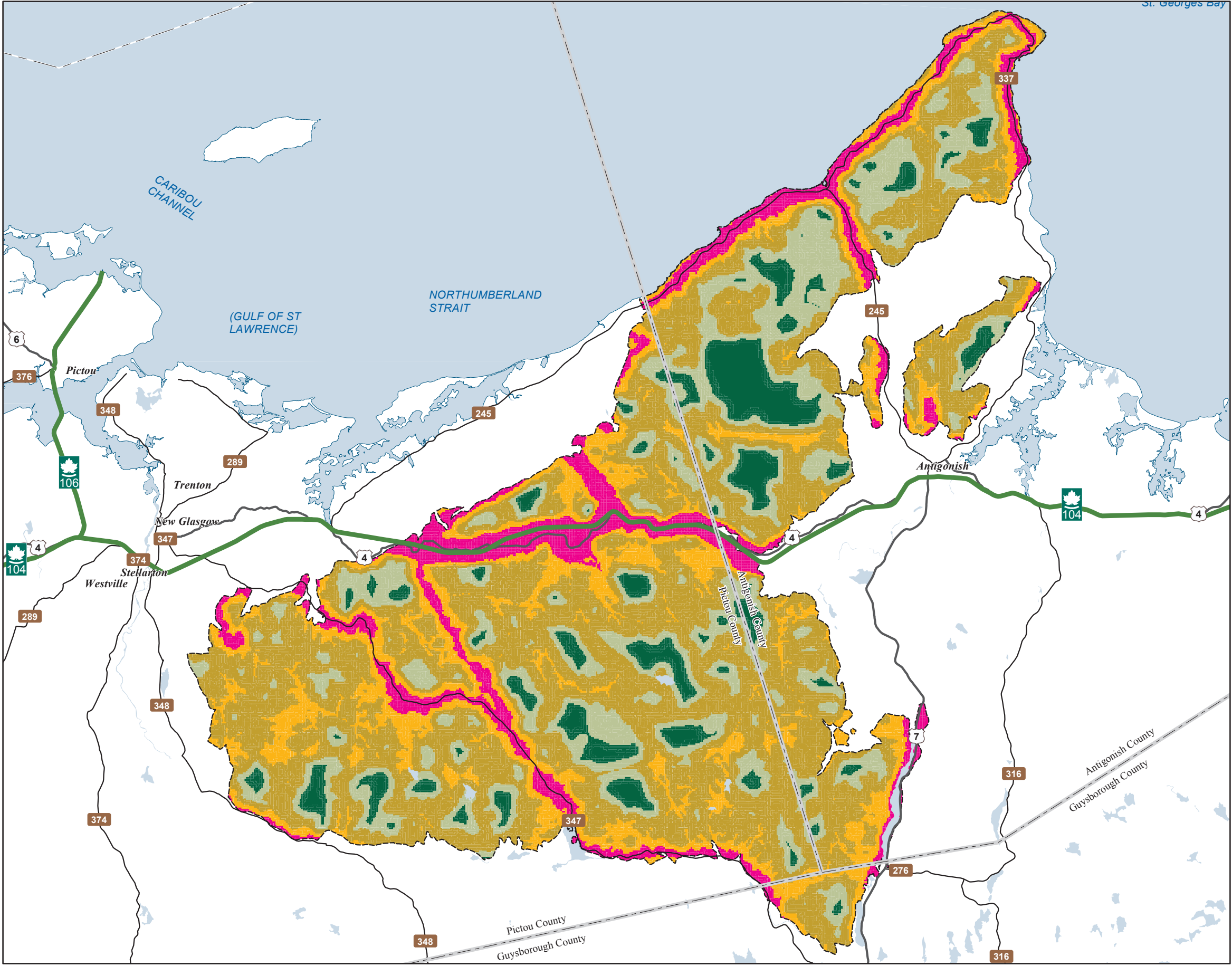
- Legend**
- Ecodistrict Boundary
  - Frequent
  - Gap
  - Infrequent
  - Open Seral
  - Water



**Map Notes**  
Base data derived from the Nova Scotia Topographic Database (NSTDB). Copyright Province of Nova Scotia. All rights reserved. The NSTDB is available from Service Nova Scotia & Municipal Relations, Nova Scotia Geomatics Centre, 160 Willow St., Amherst, Nova Scotia.  
  
Additional information derived from Nova Scotia Department of Natural Resources, Geographic Information Systems (GIS) databases.

**Disclaimer**  
The information on this map may have come from a variety of government and non-government sources and is subject to change without notice. The Nova Scotia Department of Natural Resources accepts no liability for any errors, deficiencies, or faults on this map.





**Ecological Landscape Analysis**  
**Map 5**  
**Road Index**

Pictou Antigonish Highlands - Ecodistrict 330

**Legend**

- Ecodistrict Boundary
- Remote
- Forest Resource
- Mixed Rural
- Agriculture Suburban
- Urban
- Water



**Map Notes**

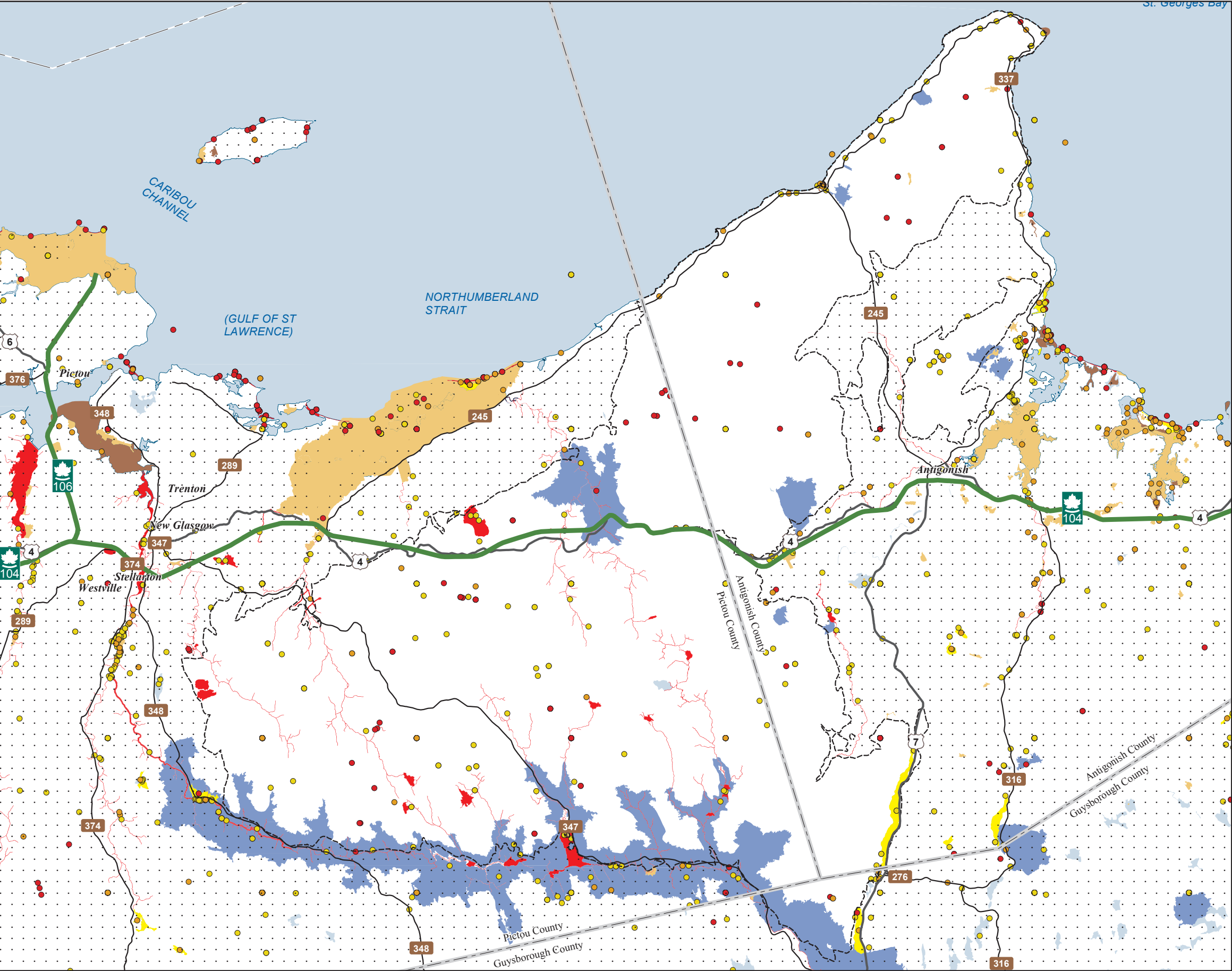
Base data derived from the Nova Scotia Topographic Database (NSTDB). Copyright Province of Nova Scotia. All rights reserved. The NSTDB is available from Service Nova Scotia & Municipal Relations, Nova Scotia Geomatics Centre, 160 Willow St., Amherst, Nova Scotia.

Additional information derived from Nova Scotia Department of Natural Resources, Geographic Information Systems (GIS) databases.

**Disclaimer**

The information on this map may have come from a variety of government and non-government sources and is subject to change without notice. The Nova Scotia Department of Natural Resources accepts no liability for any errors, deficiencies, or faults on this map.





Date: 6/25/2015

# Ecological Landscape Analysis Map 6 Special Occurrences - Species

Pictou Antigonish Highlands - Ecodistrict 330

## Legend

- Ecodistrict Boundary
- Outside of Ecodistrict

## ACCDC Occurrences

- Species At Risk
- Species of Conservation Concern - May Be At Risk
- Species of Conservation Concern - Sensitive

## NS DNR Significant Habitat

- Species at risk
- Species of conservation concern
- Deer wintering
- Migratory bird
- Other significant habitat
- Water



## Map Notes

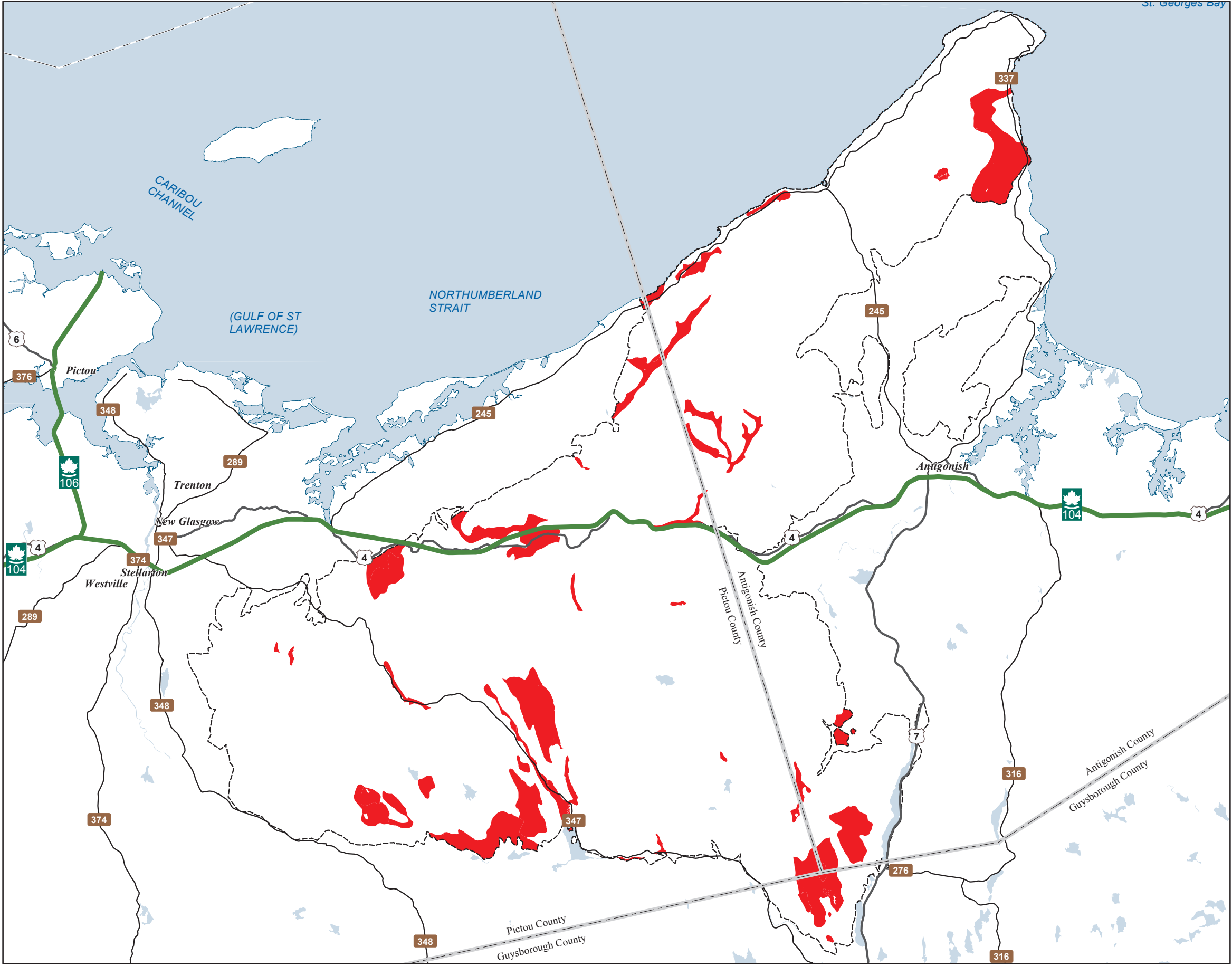
Base data derived from the Nova Scotia Topographic Database (NSTDB). Copyright Province of Nova Scotia. All rights reserved. Service Nova Scotia & Municipal Relations, Nova Scotia Geomatics Centre, 160 Willow St., Amherst, Nova Scotia. Species status and locations data from Atlantic Canada Conservation Data Centre.

Additional information derived from Nova Scotia Department of Natural Resources, Geographic Information Systems (GIS) databases.

## Disclaimer

The information on this map may have come from a variety of government and non-government sources and is subject to change without notice. The Nova Scotia Department of Natural Resources accepts no liability for any errors, deficiencies, or faults on this map.





Ecological Landscape Analysis  
Map 7  
Rare Ecosections

Pictou Antigonish Highlands - Ecodistrict 330

- Legend**
- Ecodistrict Boundary
  - Rare Ecosections
  - Water

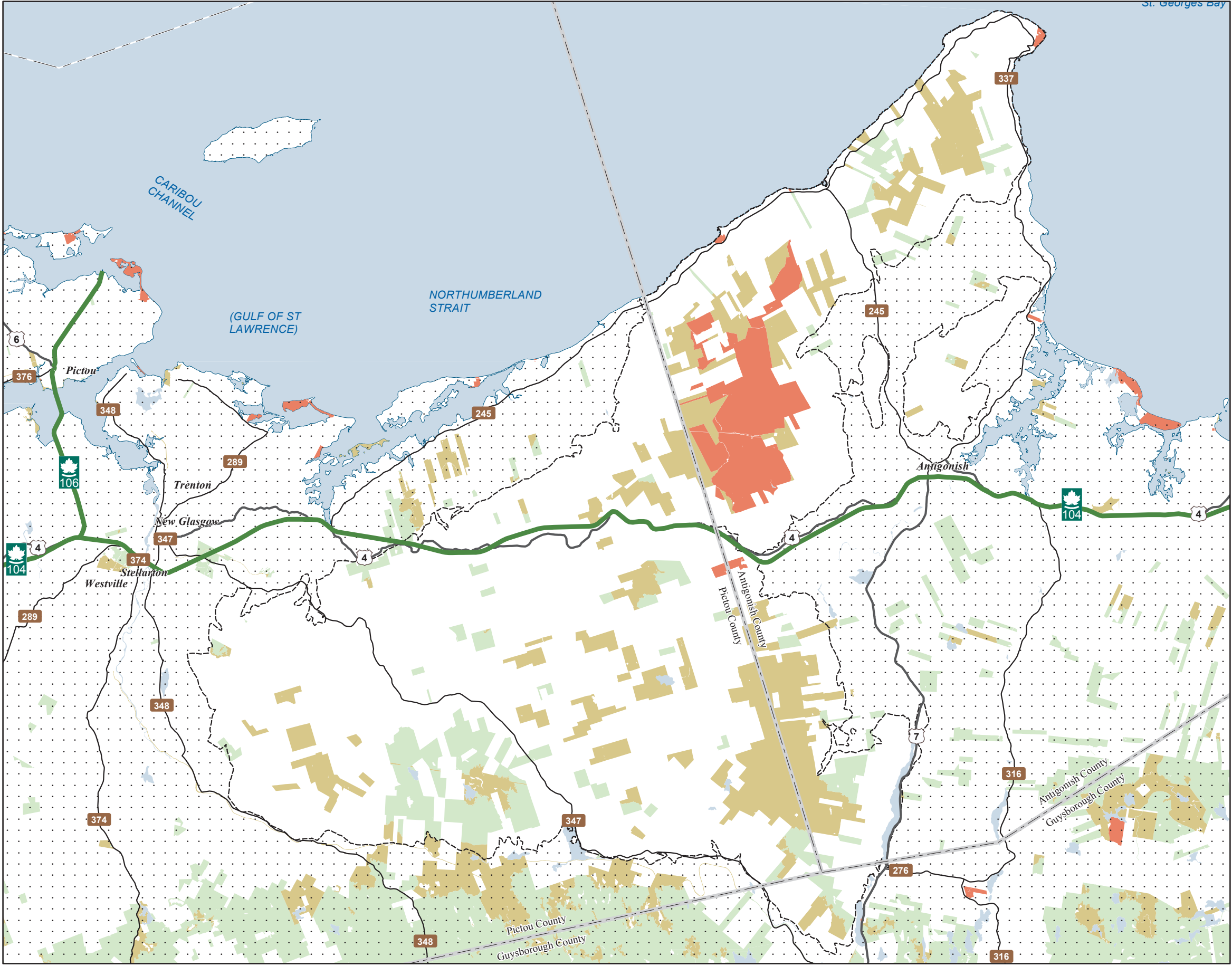


**Map Notes**  
Base data derived from the Nova Scotia Topographic Database (NSTDB). Copyright Province of Nova Scotia. All rights reserved. The NSTDB is available from Service Nova Scotia & Municipal Relations, Nova Scotia Geomatics Centre, 160 Willow St., Amherst, Nova Scotia.

Additional information derived from Nova Scotia Department of Natural Resources, Geographic Information Systems (GIS) databases.

**Disclaimer**  
The information on this map may have come from a variety of government and non-government sources and is subject to change without notice. The Nova Scotia Department of Natural Resources accepts no liability for any errors, deficiencies, or faults on this map.





**Ecological Landscape Analysis**  
**Map 8**  
**IRM Classes**

Pictou Antigonish Highlands - Ecodistrict 330

**Legend**

- Ecodistrict Boundary
- C1 - General Resource Use
- C2 - Multiple and Adaptive Resource Use
- C3 - Protected and Limited Use
- Water



**Map Notes**

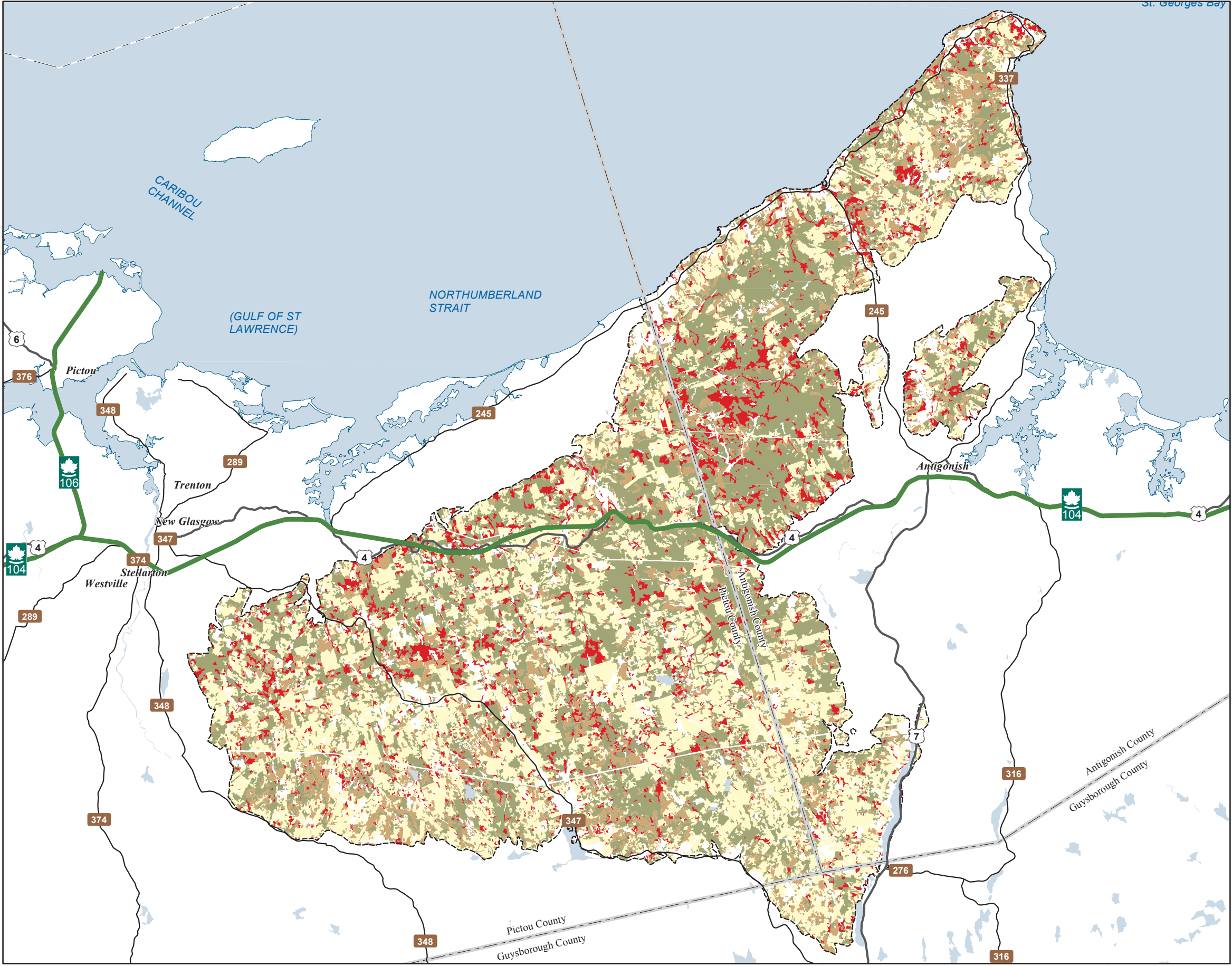
Base data derived from the Nova Scotia Topographic Database (NSTDB). Copyright Province of Nova Scotia. All rights reserved. The NSTDB is available from Service Nova Scotia & Municipal Relations, Nova Scotia Geomatics Centre, 160 Willow St., Amherst, Nova Scotia.

Additional information derived from Nova Scotia Department of Natural Resources, Geographic Information Systems (GIS) databases.

**Disclaimer**

The information on this map may have come from a variety of government and non-government sources and is subject to change without notice. The Nova Scotia Department of Natural Resources accepts no liability for any errors, deficiencies, or faults on this map.





**Ecological Landscape Analysis**  
**Map 9**  
**Development Classes**

Pictou Antigonish Highlands - Ecodistrict 330

- Legend**
- Ecodistrict Boundary
  - Not forested
  - Establishment
  - Young Forest
  - Mature Timber
  - Multi-Aged / Old Forest
  - Water



**Map Notes**  
Base data derived from the Nova Scotia Topographic Database (NSTDB). Copyright Province of Nova Scotia. All rights reserved. The NSTDB is available from Service Nova Scotia & Municipal Relations, Nova Scotia Geomatics Centre, 160 Willow St., Amherst, Nova Scotia.

Additional information derived from Nova Scotia Department of Natural Resources, Geographic Information Systems (GIS) databases.

**Disclaimer**  
The information on this map may have come from a variety of government and non-government sources and is subject to change without notice. The Nova Scotia Department of Natural Resources accepts no liability for any errors, deficiencies, or faults on this map.



