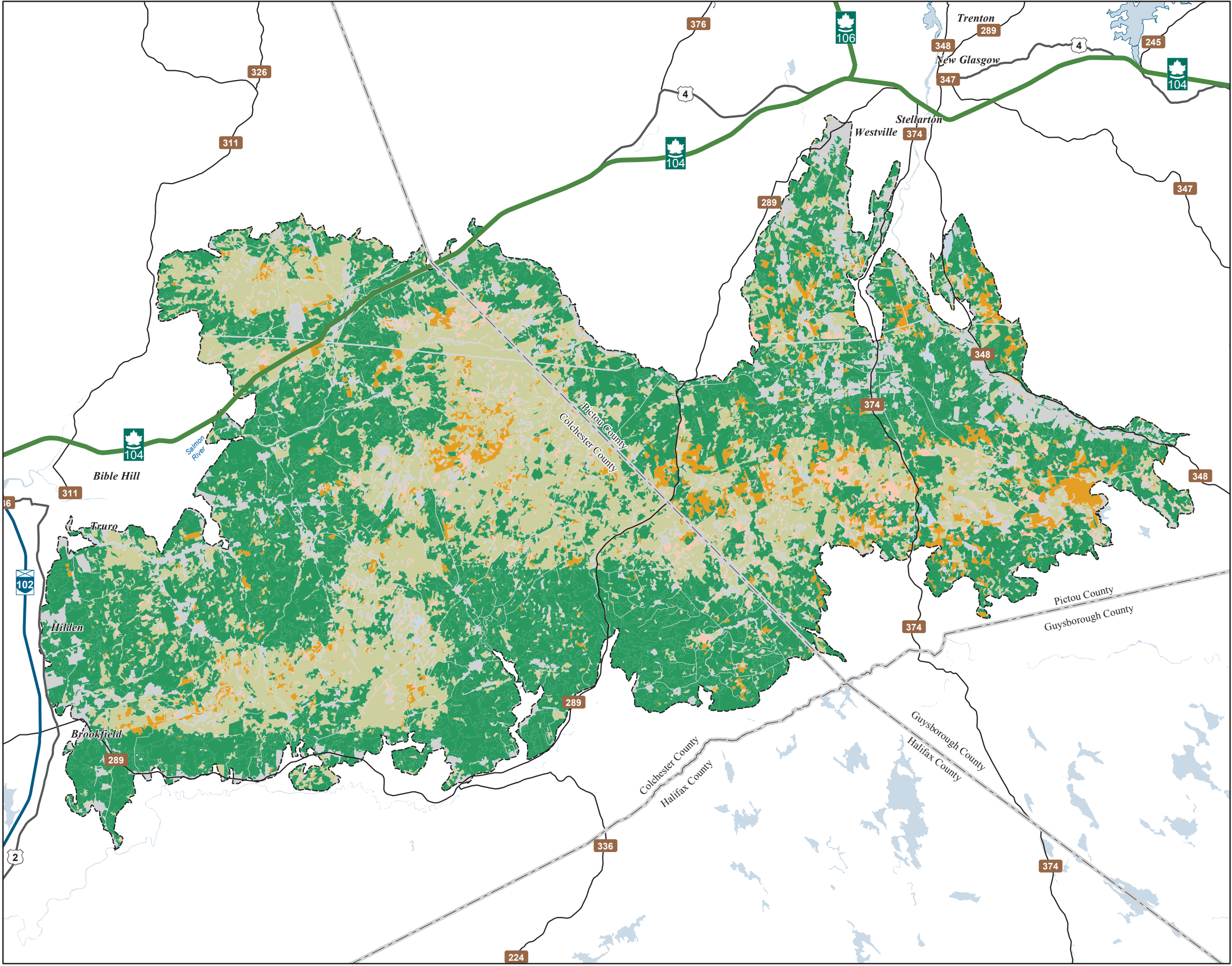


Date: 6/25/2015



Ecological Landscape Analysis
Map 1
Land Capability
Central Uplands - Ecodistrict 380

Legend

- Ecodistrict Boundary
- 0 (No capability/converted)
- 1 - 3 (Low)
- 4 - (Low - Medium)
- 5 - (Medium)
- 6+ - (High)
- Water



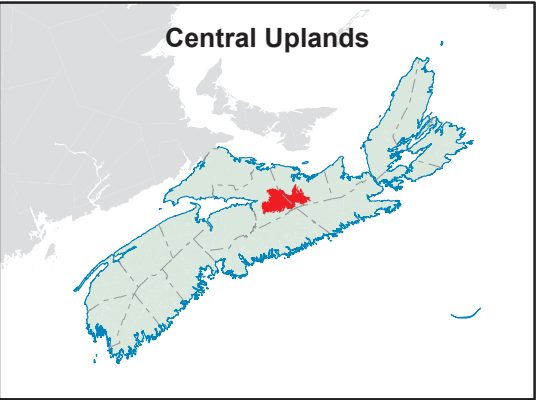
Map Notes

Base data derived from the Nova Scotia Topographic Database (NSTDB). Copyright Province of Nova Scotia. All rights reserved. The NSTDB is available from Service Nova Scotia & Municipal Relations, Nova Scotia Geomatics Centre, 160 Willow St., Amherst, Nova Scotia.

Additional information derived from Nova Scotia Department of Natural Resources, Geographic Information Systems (GIS) databases.

Disclaimer

The information on this map may have come from a variety of government and non-government sources and is subject to change without notice. The Nova Scotia Department of Natural Resources accepts no liability for any errors, deficiencies, or faults on this map.



Central Uplands - Ecodistrict 380

Legend:

- Ecodistrict Boundary (Dashed line)
- Flows (Double-headed arrow)
- Floodplain (Light brown)
- Spruce Hemlock Pine Hummocks and Hills (Green with white pattern)
- Tolerant Hardwood Drumlins and Hummocks (Orange)
- Tolerant Hardwood Hills (Yellow-orange)
- Tolerant Mixedwood Drumlins (Light yellow)
- Tolerant Mixedwood Hills (Yellow)
- Tolerant Mixedwood Slopes (Olive green)
- Wetlands (Green with white pattern)
- Valley Corridors (Pink)
- Water (Light blue)

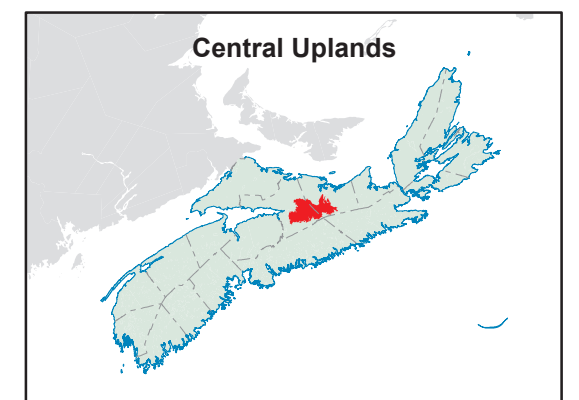


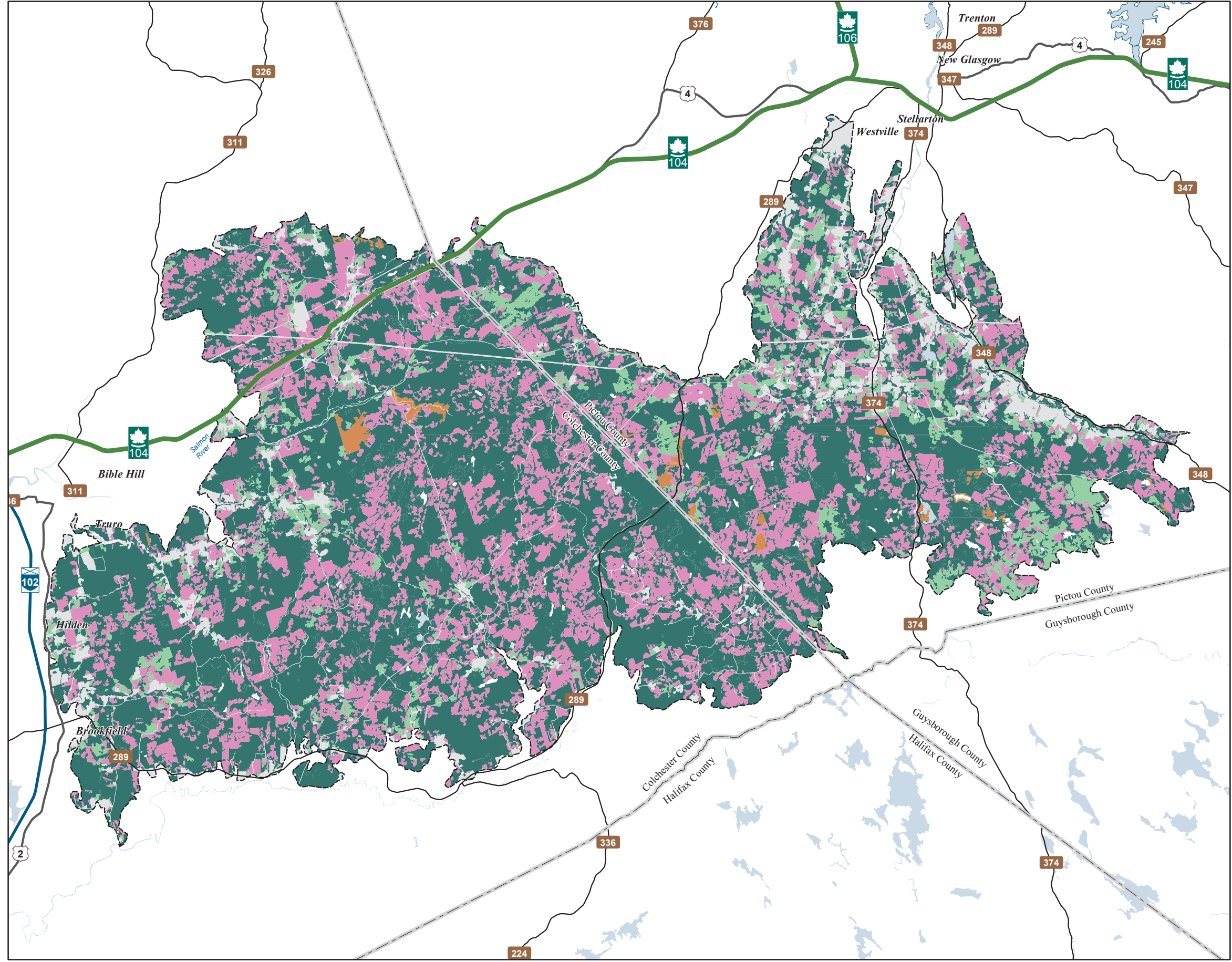
Base data derived from the Nova Scotia Topographic Database (NSTDB). Copyright Province of Nova Scotia. All rights reserved. The NSTDB is available from Service Nova Scotia & Municipal Relations, Nova Scotia Geomatics Centre, 160 Willow St., Amherst, Nova Scotia.

Additional information derived from Nova Scotia Department of Natural Resources, Geographic Information Systems (GIS) databases.

Disclaimer

The information on this map may have come from a variety of government and non-government sources and is subject to change without notice. The Nova Scotia Department of Natural Resources accepts no liability for any errors, deficiencies, or faults on this map.



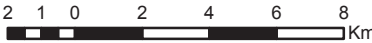


Ecological Landscape Analysis
Map 3
Ecological Emphasis Classes

Central Uplands - Ecodistrict 380

Legend

- Ecodistrict Boundary
- Reserve
- Extensive
- Intensive
- Converted
- Unclassified
- Water



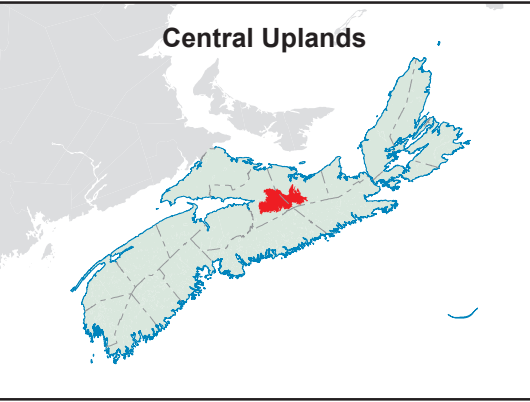
Map Notes

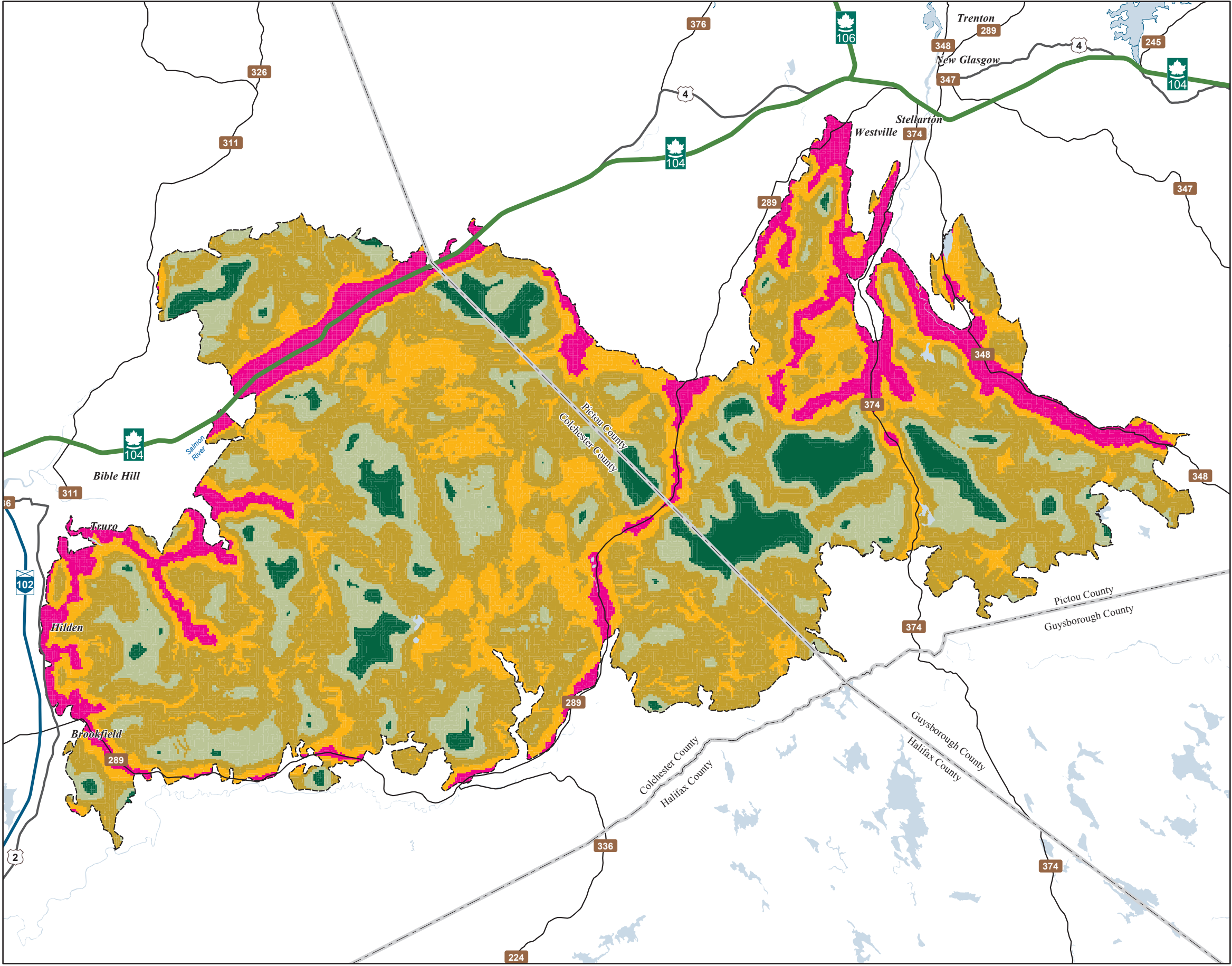
Base data derived from the Nova Scotia Topographic Database (NSTDB). Copyright Province of Nova Scotia. All rights reserved. The NSTDB is available from Service Nova Scotia & Municipal Relations, Nova Scotia Geomatics Centre, 160 Willow St., Amherst, Nova Scotia.

Additional information derived from Nova Scotia Department of Natural Resources, Geographic Information Systems (GIS) databases.

Disclaimer

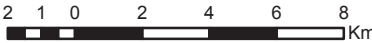
The information on this map may have come from a variety of government and non-government sources and is subject to change without notice. The Nova Scotia Department of Natural Resources accepts no liability for any errors, deficiencies, or faults on this map.





Ecological Landscape Analysis
Map 5
Road Index
Central Uplands - Ecodistrict 380

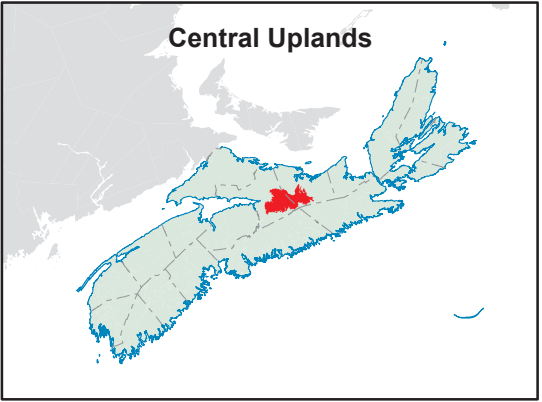
- Legend**
- Ecodistrict Boundary
 - Remote
 - Forest Resource
 - Mixed Rural
 - Agriculture Suburban
 - Urban
 - Water



Map Notes
Base data derived from the Nova Scotia Topographic Database (NSTDB). Copyright Province of Nova Scotia. All rights reserved. The NSTDB is available from Service Nova Scotia & Municipal Relations, Nova Scotia Geomatics Centre, 160 Willow St., Amherst, Nova Scotia.

Additional information derived from Nova Scotia Department of Natural Resources, Geographic Information Systems (GIS) databases.

Disclaimer
The information on this map may have come from a variety of government and non-government sources and is subject to change without notice. The Nova Scotia Department of Natural Resources accepts no liability for any errors, deficiencies, or faults on this map.



Ecological Landscape Analysis
Map 6
Special Occurrences - Species

Central Uplands - Ecodistrict 380

Legend

- Ecodistrict Boundary
- Outside of Ecodistrict
- Other Occurrences (Point of Interest)
- ACCDC Occurrences**
 - Species At Risk
 - Species of Conservation Concern - May Be At Risk
 - Species of Conservation Concern - Sensitive
- NS DNR Significant Habitat**
 - Species at risk
 - Species of conservation concern
 - Deer wintering
 - Other significant habitat
 - Water



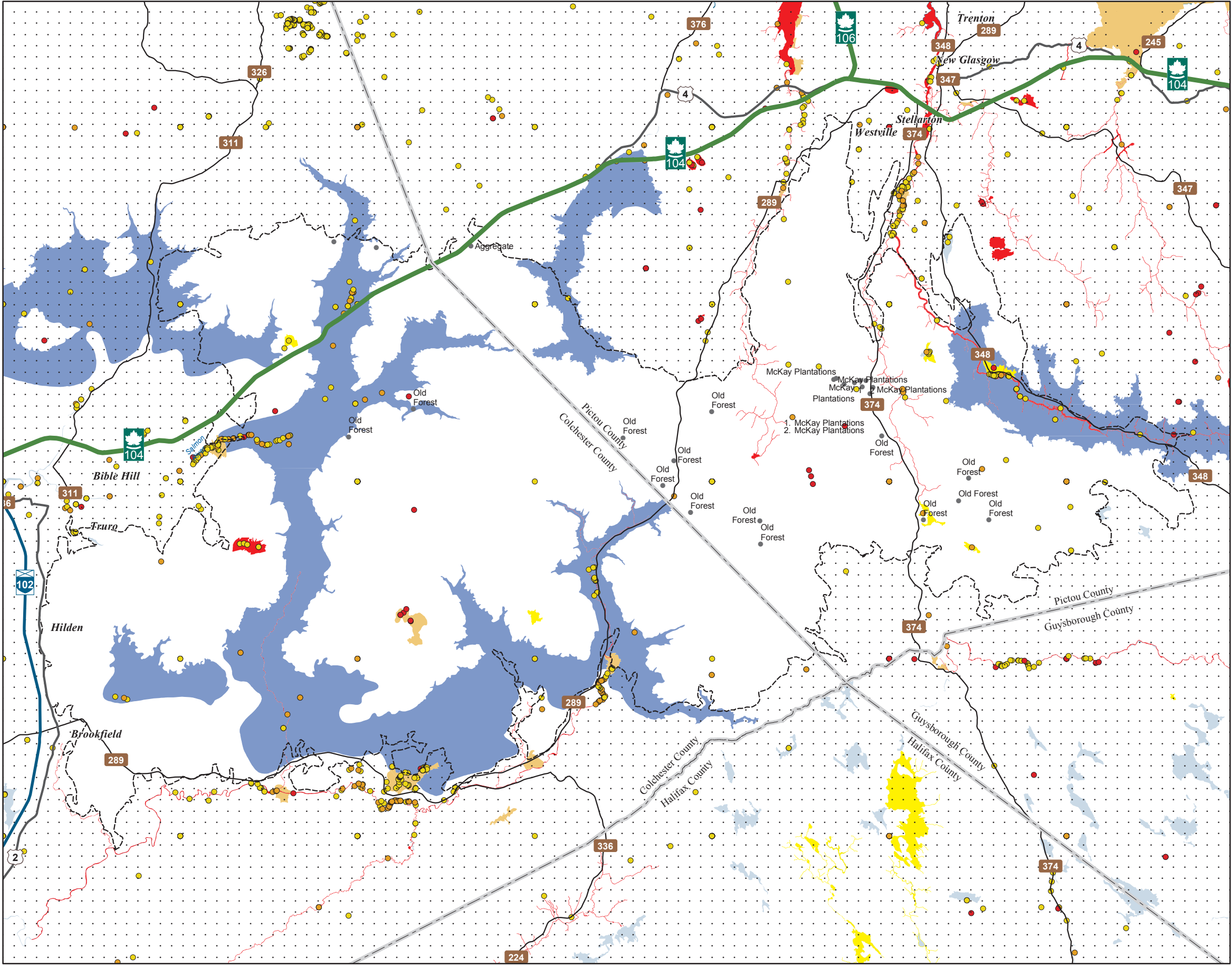
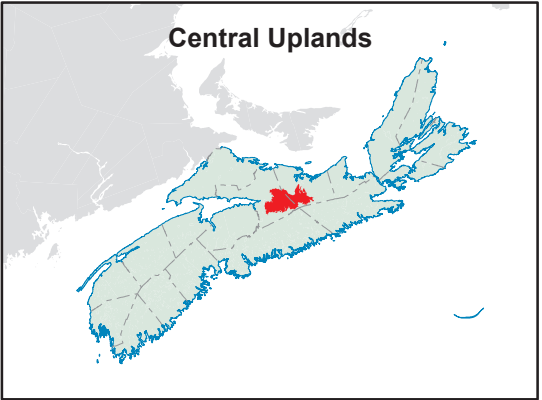
Map Notes

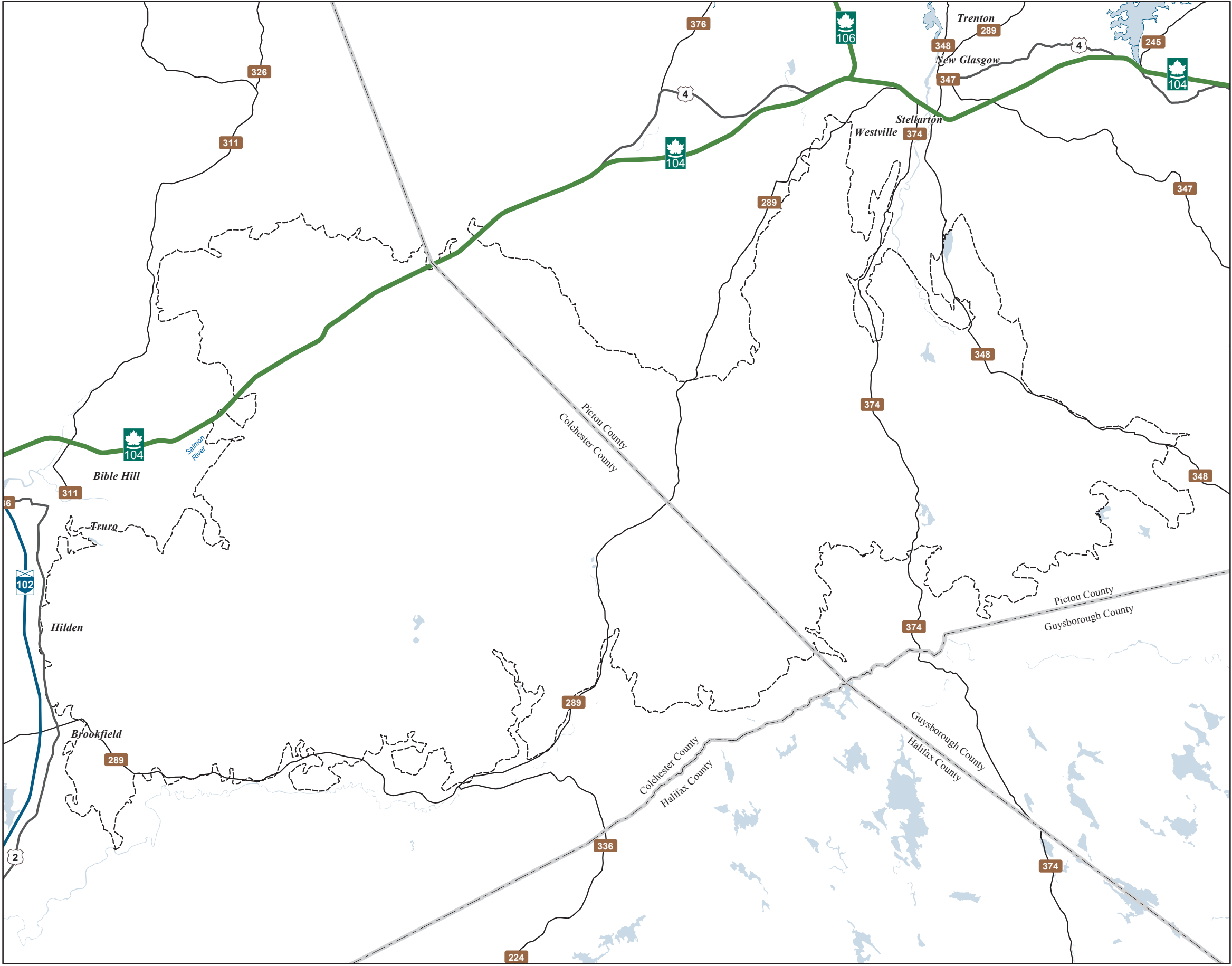
Base data derived from the Nova Scotia Topographic Database (NSTDB). Copyright Province of Nova Scotia. All rights reserved. Service Nova Scotia & Municipal Relations, Nova Scotia Geomatics Centre, 160 Willow St., Amherst, Nova Scotia. Species status and locations data from Atlantic Canada Conservation Data Centre.

Additional information derived from Nova Scotia Department of Natural Resources, Geographic Information Systems (GIS) databases.

Disclaimer

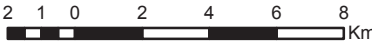
The information on this map may have come from a variety of government and non-government sources and is subject to change without notice. The Nova Scotia Department of Natural Resources accepts no liability for any errors, deficiencies, or faults on this map.





Ecological Landscape Analysis
Map 7
Rare Ecosections
 Central Uplands - Ecodistrict 380

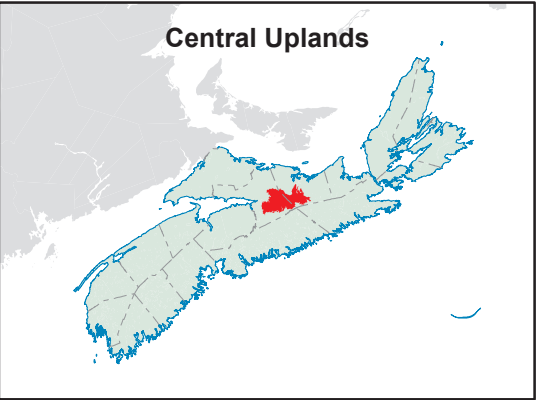
- Legend**
- Ecodistrict Boundary
 - Rare Ecosections
 - Water

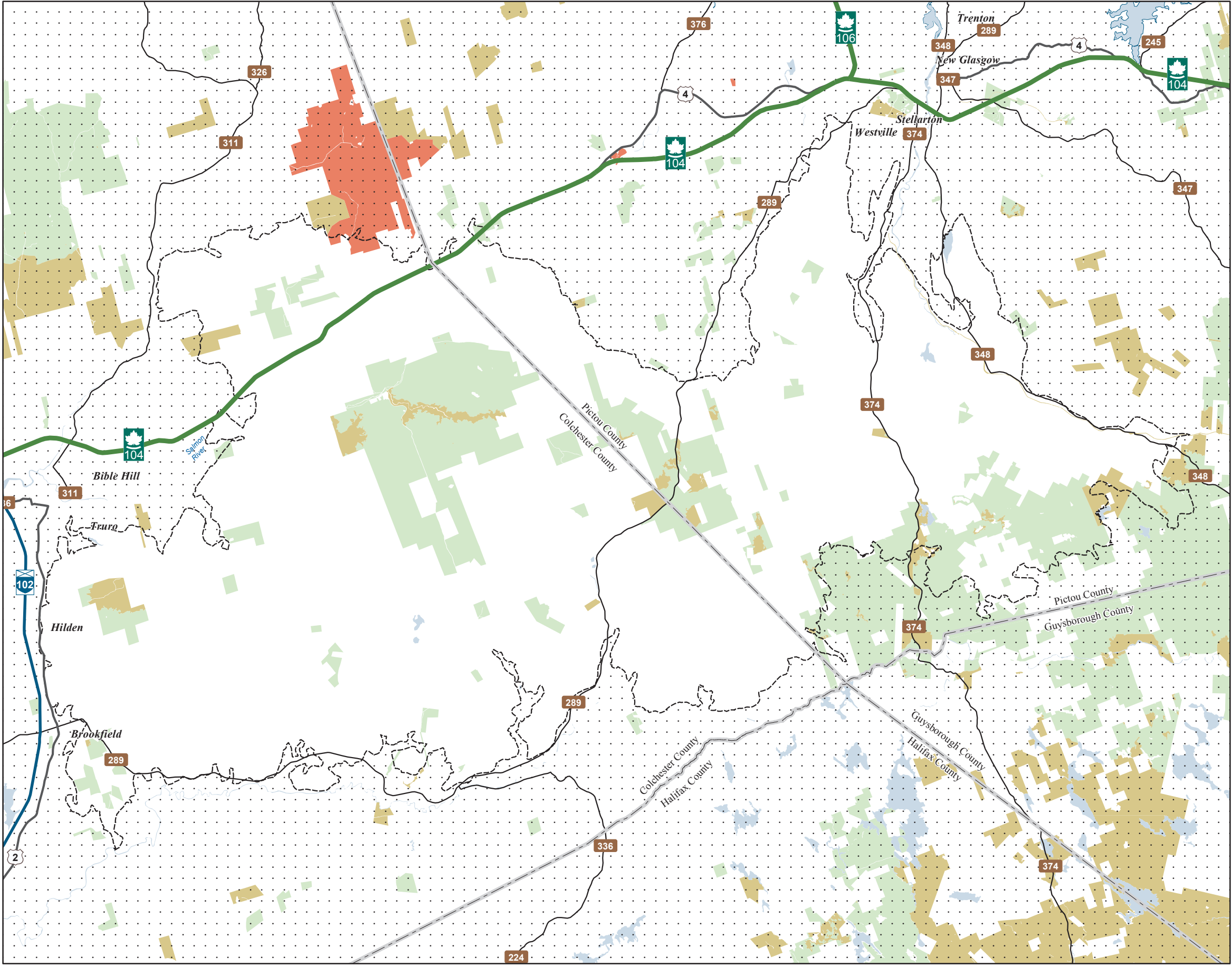


Map Notes
 Base data derived from the Nova Scotia Topographic Database (NSTDB). Copyright Province of Nova Scotia. All rights reserved. The NSTDB is available from Service Nova Scotia & Municipal Relations, Nova Scotia Geomatics Centre, 160 Willow St., Amherst, Nova Scotia.

Additional information derived from Nova Scotia Department of Natural Resources, Geographic Information Systems (GIS) databases.

Disclaimer
 The information on this map may have come from a variety of government and non-government sources and is subject to change without notice. The Nova Scotia Department of Natural Resources accepts no liability for any errors, deficiencies, or faults on this map.

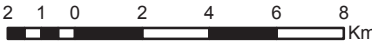




Ecological Landscape Analysis
Map 8
IRM Classes

Central Uplands - Ecodistrict 380

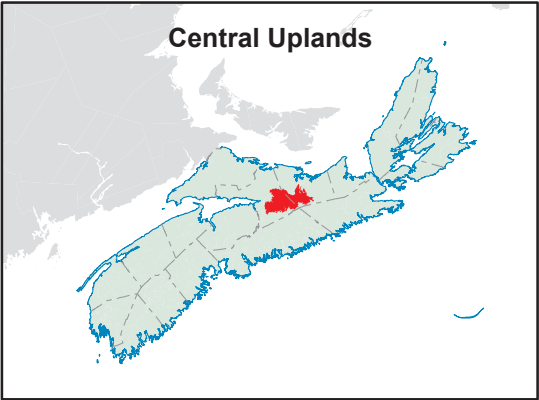
- Legend**
- Ecodistrict Boundary
 - C1 - General Resource Use
 - C2 - Multiple and Adaptive Resource Use
 - C3 - Protected and Limited Use
 - Water

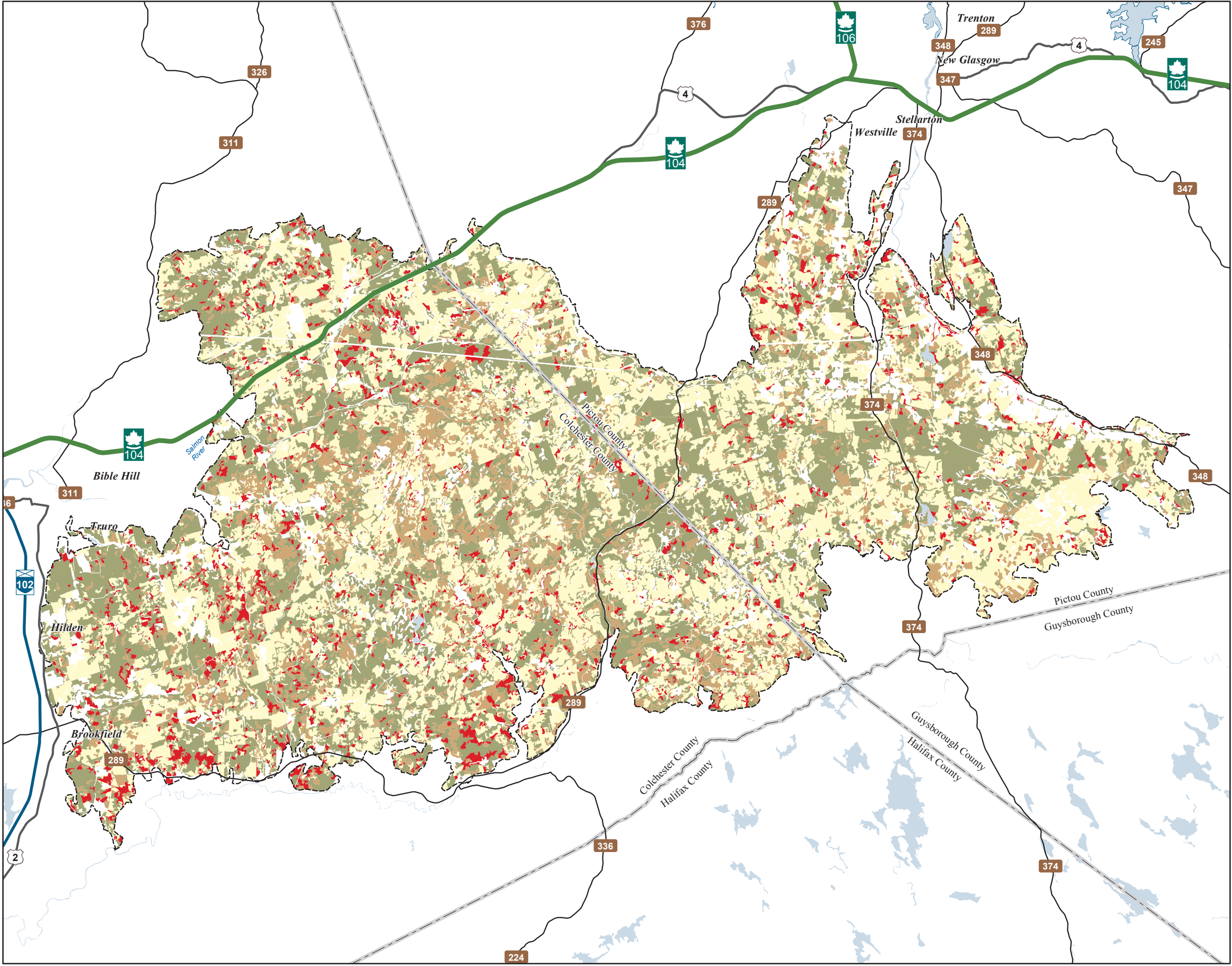


Map Notes
Base data derived from the Nova Scotia Topographic Database (NSTDB). Copyright Province of Nova Scotia. All rights reserved. The NSTDB is available from Service Nova Scotia & Municipal Relations, Nova Scotia Geomatics Centre, 160 Willow St., Amherst, Nova Scotia.

Additional information derived from Nova Scotia Department of Natural Resources, Geographic Information Systems (GIS) databases.

Disclaimer
The information on this map may have come from a variety of government and non-government sources and is subject to change without notice. The Nova Scotia Department of Natural Resources accepts no liability for any errors, deficiencies, or faults on this map.





Ecological Landscape Analysis
Map 9
Development Classes
Central Uplands - Ecodistrict 380

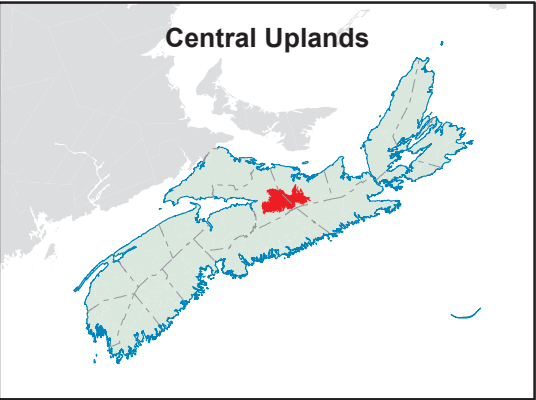
- Legend**
- Ecodistrict Boundary
 - Not forested
 - Establishment
 - Young Forest
 - Mature Timber
 - Multi-Aged / Old Forest
 - Water

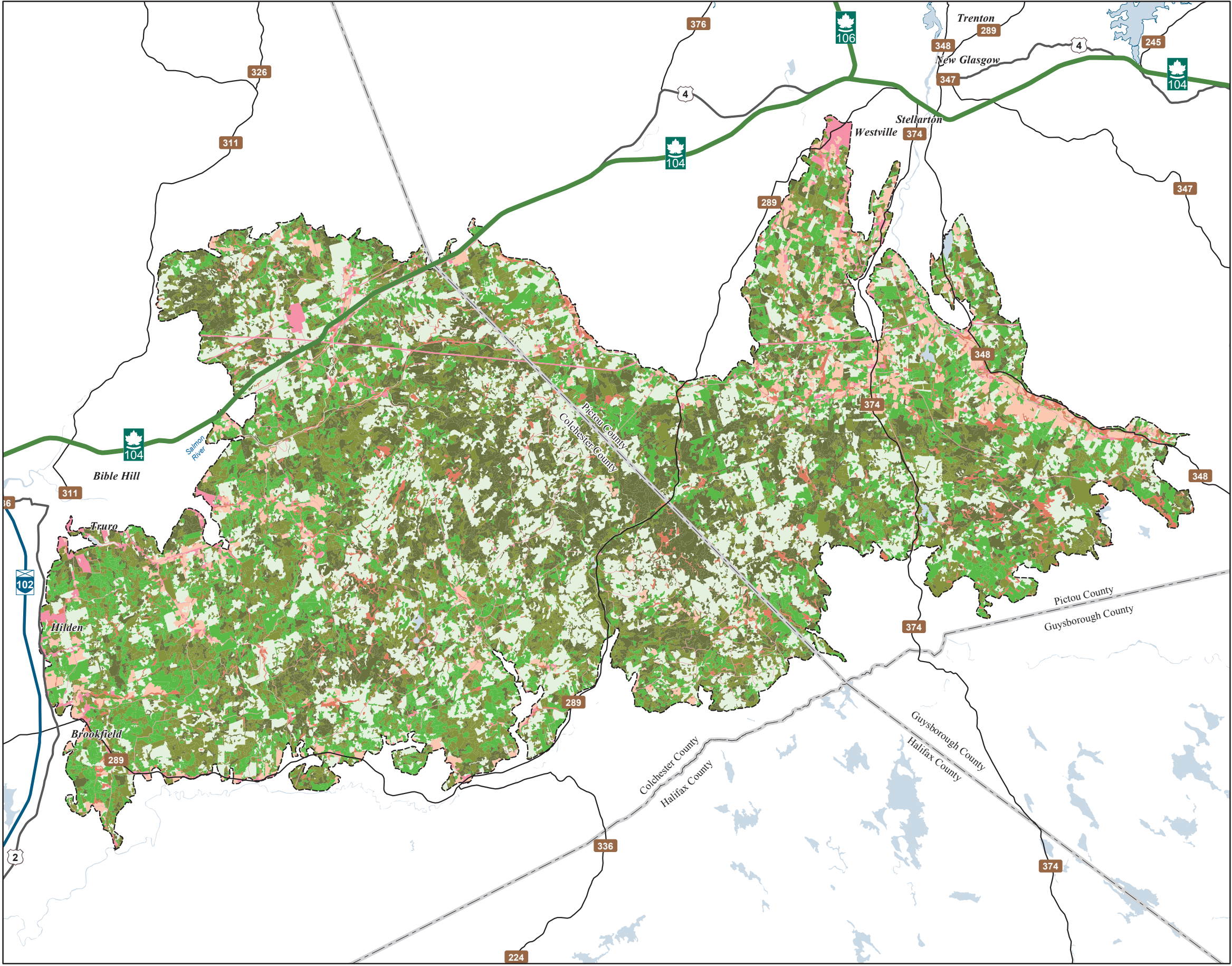


Map Notes
Base data derived from the Nova Scotia Topographic Database (NSTDB). Copyright Province of Nova Scotia. All rights reserved. The NSTDB is available from Service Nova Scotia & Municipal Relations, Nova Scotia Geomatics Centre, 160 Willow St., Amherst, Nova Scotia.

Additional information derived from Nova Scotia Department of Natural Resources, Geographic Information Systems (GIS) databases.

Disclaimer
The information on this map may have come from a variety of government and non-government sources and is subject to change without notice. The Nova Scotia Department of Natural Resources accepts no liability for any errors, deficiencies, or faults on this map.





Ecological Landscape Analysis
Map 10
Seral Stages

Central Uplands - Ecodistrict 380

Legend

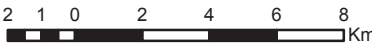
Ecodistrict Boundary

Ecological Land Cover

- Agriculture and Developed Vegetation
- Shrublands and Herbaceous Vegetation
- Sparse Vegetation and Naturally Unvegetated
- Urban/Industrial Vegetation and Unvegetated

Seral Stage

- Unclassified (e.g. recent cut)
- Early
- Mid
- Late
- Water



Map Notes

Base data derived from the Nova Scotia Topographic Database (NSTDB). Copyright Province of Nova Scotia. All rights reserved. The NSTDB is available from Service Nova Scotia & Municipal Relations, Nova Scotia Geomatics Centre, 160 Willow St., Amherst, Nova Scotia.

Additional information derived from Nova Scotia Department of Natural Resources, Geographic Information Systems (GIS) databases.

Disclaimer

The information on this map may have come from a variety of government and non-government sources and is subject to change without notice. The Nova Scotia Department of Natural Resources accepts no liability for any errors, deficiencies, or faults on this map.

