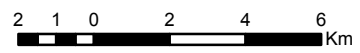


Ecological Landscape Analysis Map A Elements

Rawdon Wittenburg Hills - Ecodistrict 410

Legend

- Ecodistrict Boundary
- Valley Corridors
- Floodplain
- Tolerant Hardwood Hills
- Tolerant Mixedwood Hummocks
- Tolerant Mixedwood Slopes
- Wetlands
- Water



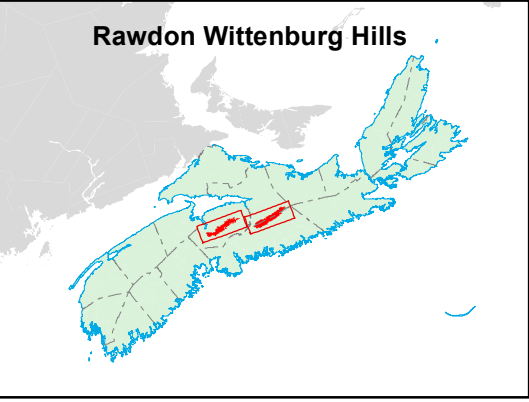
Map Notes

Base data derived from the Nova Scotia Topographic Database (NSTDB). Copyright Province of Nova Scotia. All rights reserved. Service Nova Scotia & Municipal Relations, Nova Scotia Geomatics Centre, 160 Willow St., Amherst, Nova Scotia. Species status and locations data from Atlantic Canada Conservation Data Centre.

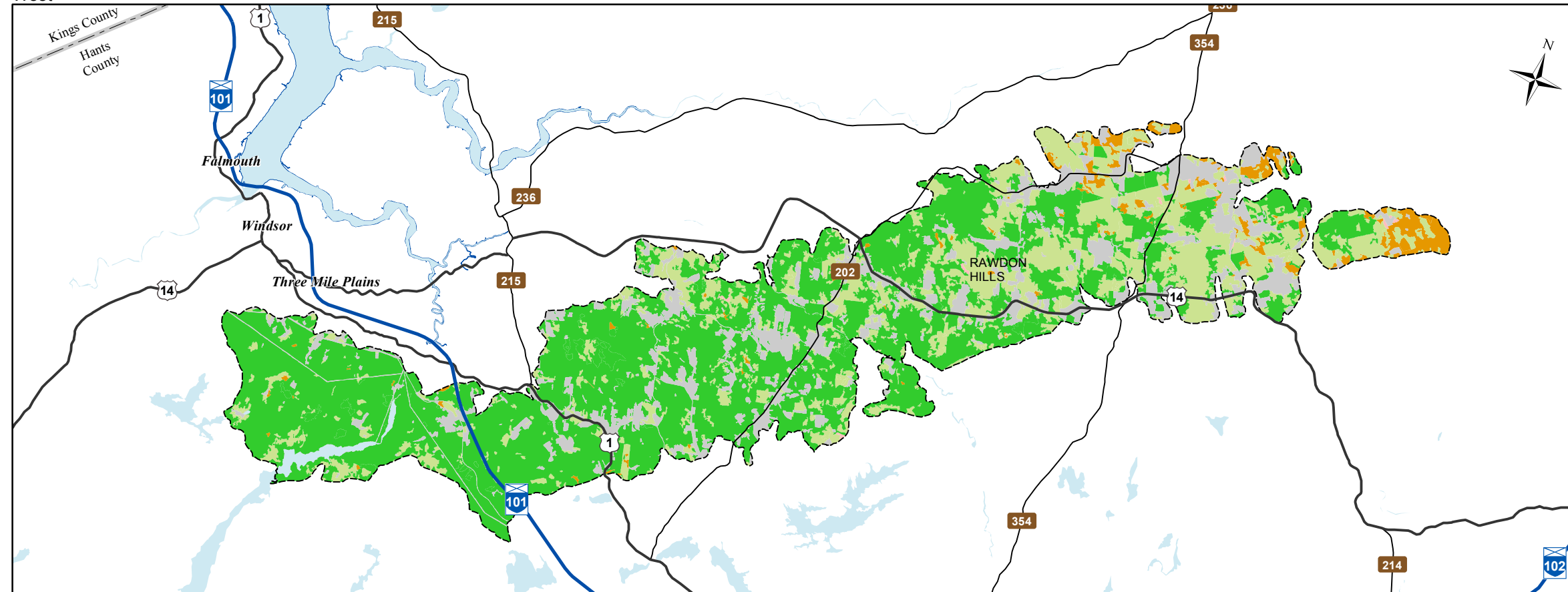
Additional information derived from Nova Scotia Department of Natural Resources, Geographic Information Systems (GIS) databases.

Disclaimer

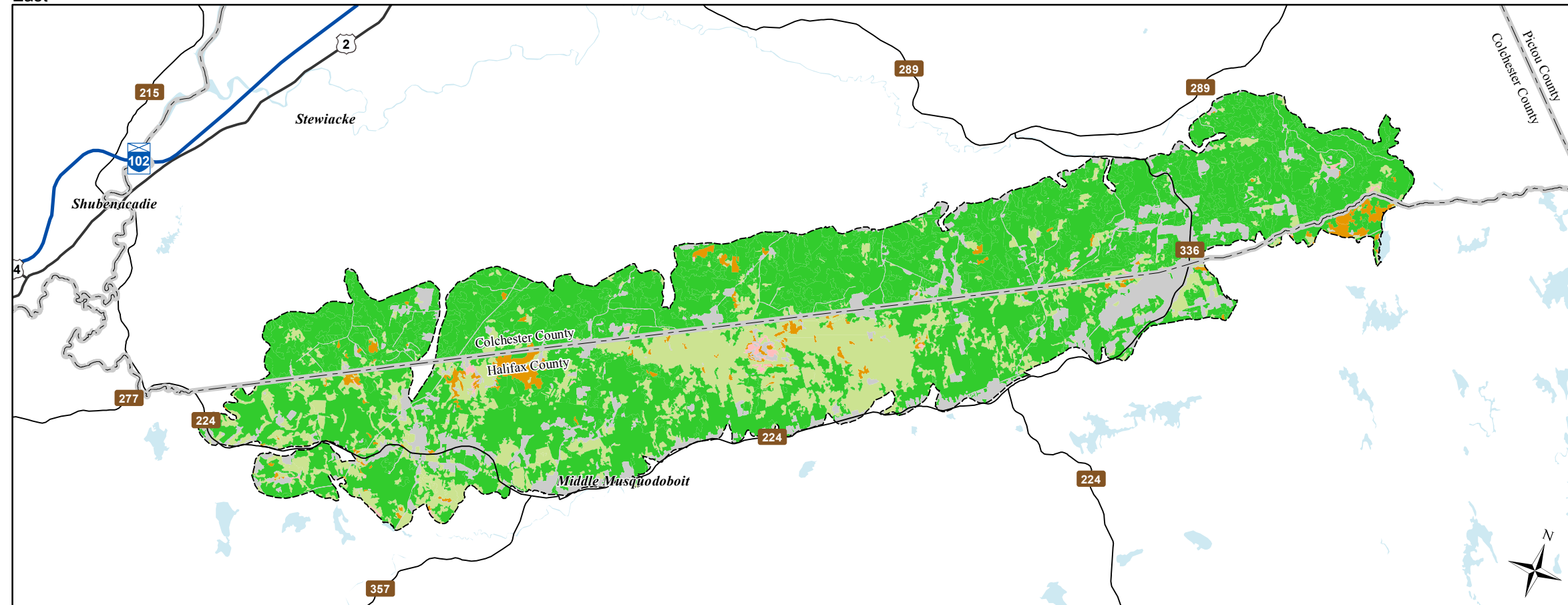
The information on this map may have come from a variety of government and non-government sources and is subject to change without notice. The Nova Scotia Department of Natural Resources accepts no liability for any errors, deficiencies, or faults on this map.



West



East

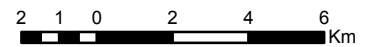


Ecological Landscape Analysis Map 1 Land Capability

Rawdon Wittenburg Hills - Ecodistrict 410

Legend

- Ecodistrict Boundary
- 0 (No capability/converted)
- 1 - 3 (Low)
- 4 - (Low - Medium)
- 5 - (Medium)
- 6+ - (High)
- Water



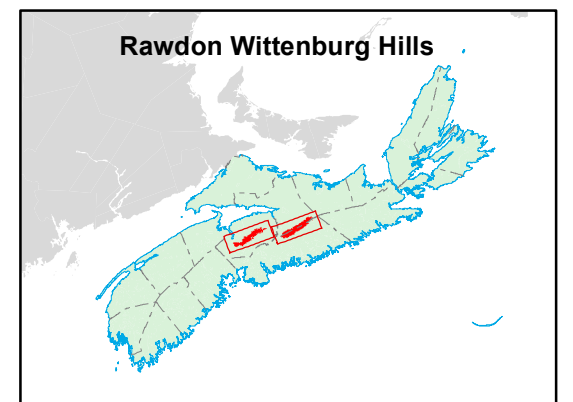
Map Notes

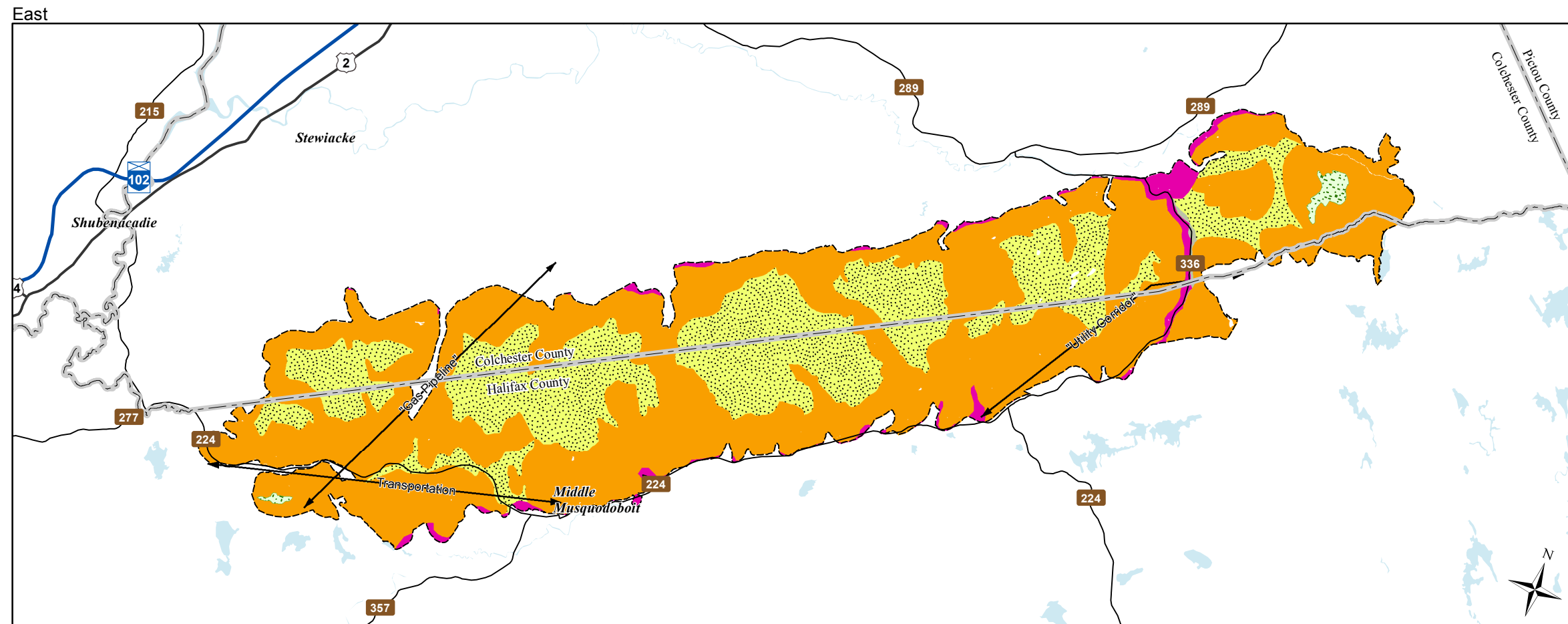
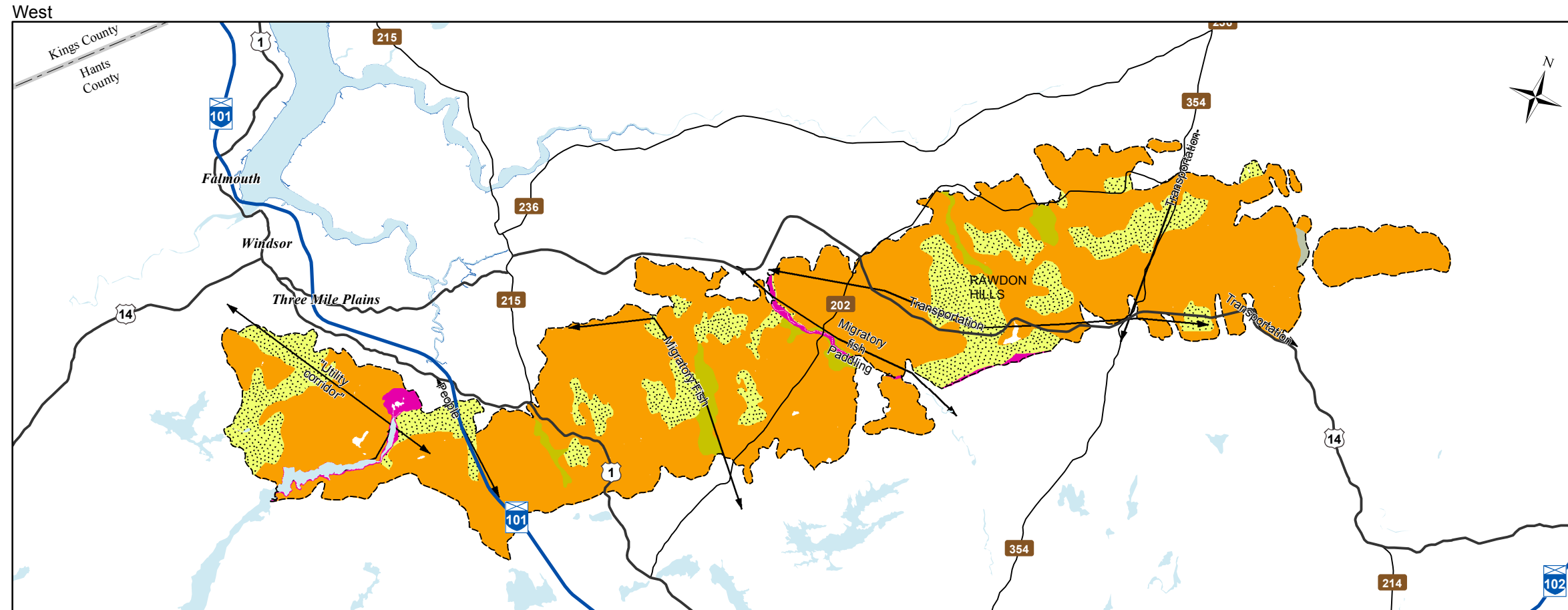
Base data derived from the Nova Scotia Topographic Database (NSTDB). Copyright Province of Nova Scotia. All rights reserved. Service Nova Scotia & Municipal Relations, Nova Scotia Geomatics Centre, 160 Willow St., Amherst, Nova Scotia. Species status and locations data from Atlantic Canada Conservation Data Centre.

Additional information derived from Nova Scotia Department of Natural Resources, Geographic Information Systems (GIS) databases.

Disclaimer

The information on this map may have come from a variety of government and non-government sources and is subject to change without notice. The Nova Scotia Department of Natural Resources accepts no liability for any errors, deficiencies, or faults on this map.



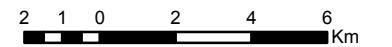


**Ecological Landscape Analysis
Map 2
Elements and Flows**

Rawdon Wittenburg Hills - Ecodistrict 410

Legend

- Ecodistrict Boundary
- Flows
- Valley Corridors
- Floodplain
- Tolerant Hardwood Hills
- Tolerant Mixedwood Hummocks
- Tolerant Mixedwood Slopes
- Wetlands
- Water



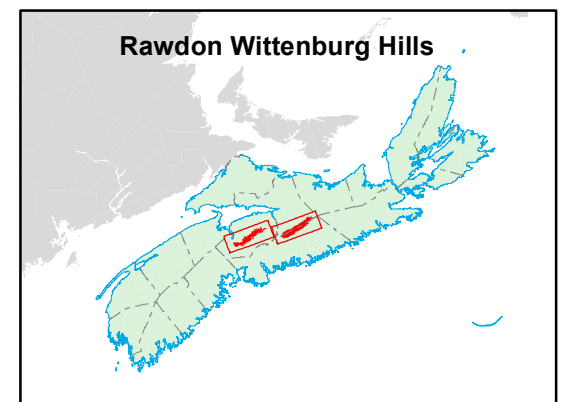
Map Notes

Base data derived from the Nova Scotia Topographic Database (NSTDB). Copyright Province of Nova Scotia. All rights reserved. Service Nova Scotia & Municipal Relations, Nova Scotia Geomatics Centre, 160 Willow St., Amherst, Nova Scotia. Species status and locations data from Atlantic Canada Conservation Data Centre.

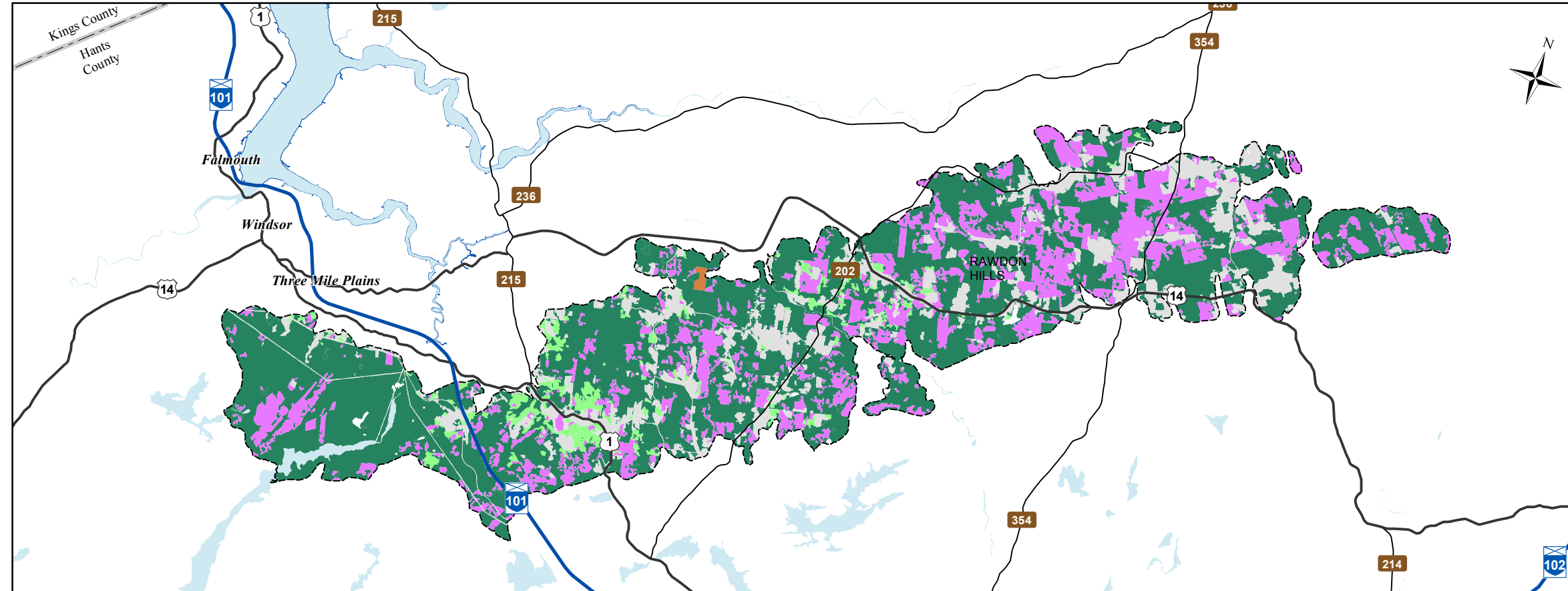
Additional information derived from Nova Scotia Department of Natural Resources, Geographic Information Systems (GIS) databases.

Disclaimer

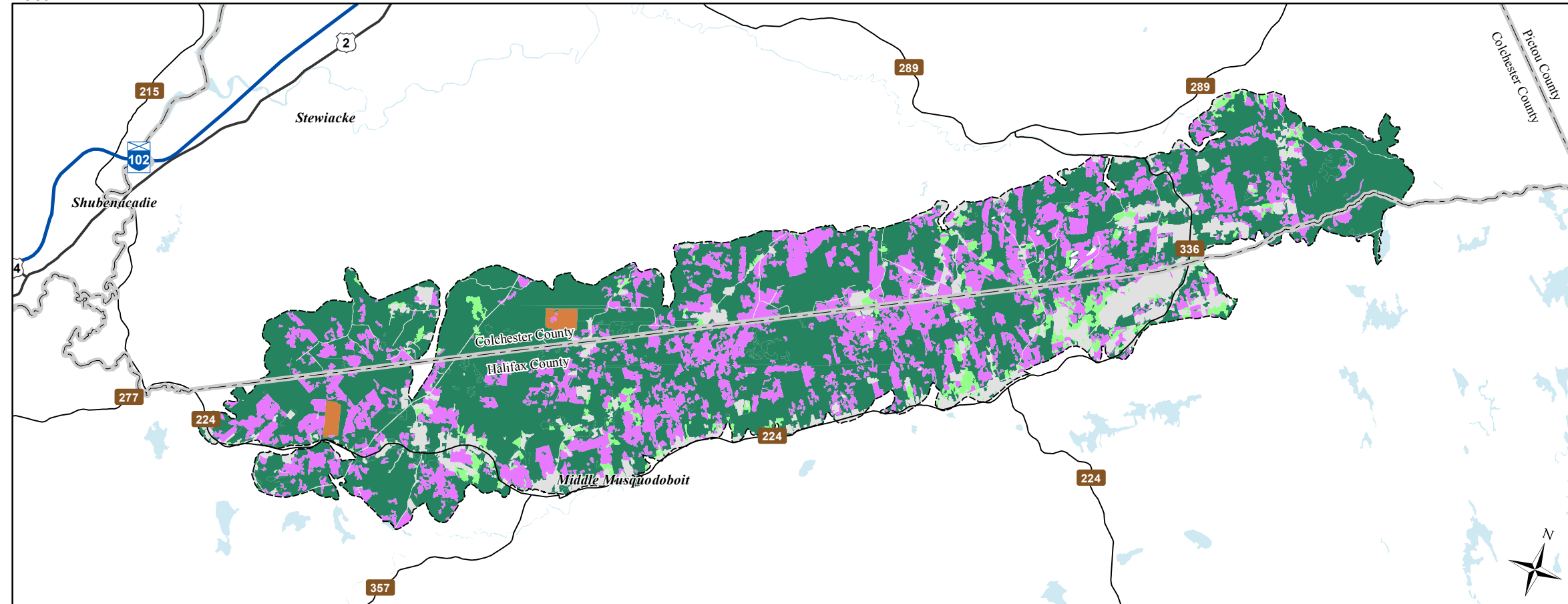
The information on this map may have come from a variety of government and non-government sources and is subject to change without notice. The Nova Scotia Department of Natural Resources accepts no liability for any errors, deficiencies, or faults on this map.



West



East



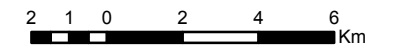
Date: 6/26/2015

Ecological Landscape Analysis Map 3 Ecological Emphasis Classes

Rawdon Wittenburg Hills - Ecodistrict 410

Legend

- Ecodistrict Boundary
- Reserve
- Extensive
- Intensive
- Converted
- Unclassified
- Water



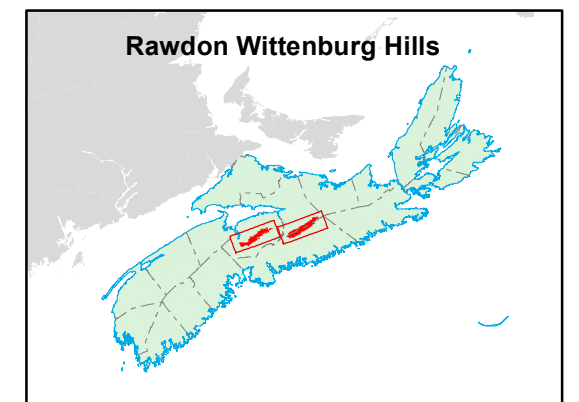
Map Notes

Base data derived from the Nova Scotia Topographic Database (NSTDB). Copyright Province of Nova Scotia. All rights reserved. Service Nova Scotia & Municipal Relations, Nova Scotia Geomatics Centre, 160 Willow St., Amherst, Nova Scotia. Species status and locations data from Atlantic Canada Conservation Data Centre.

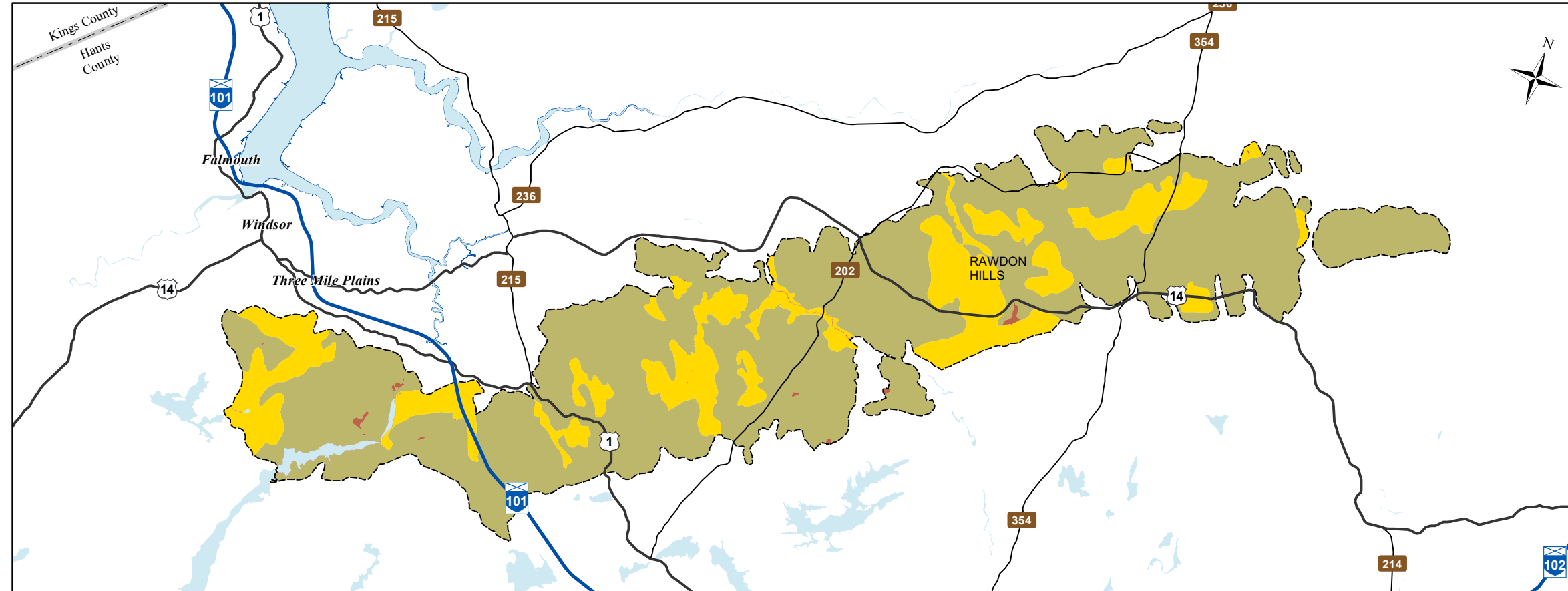
Additional information derived from Nova Scotia Department of Natural Resources, Geographic Information Systems (GIS) databases.

Disclaimer

The information on this map may have come from a variety of government and non-government sources and is subject to change without notice. The Nova Scotia Department of Natural Resources accepts no liability for any errors, deficiencies, or faults on this map.







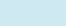
West

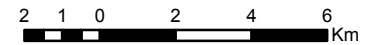


Ecological Landscape Analysis
Map 4
Natural Disturbances

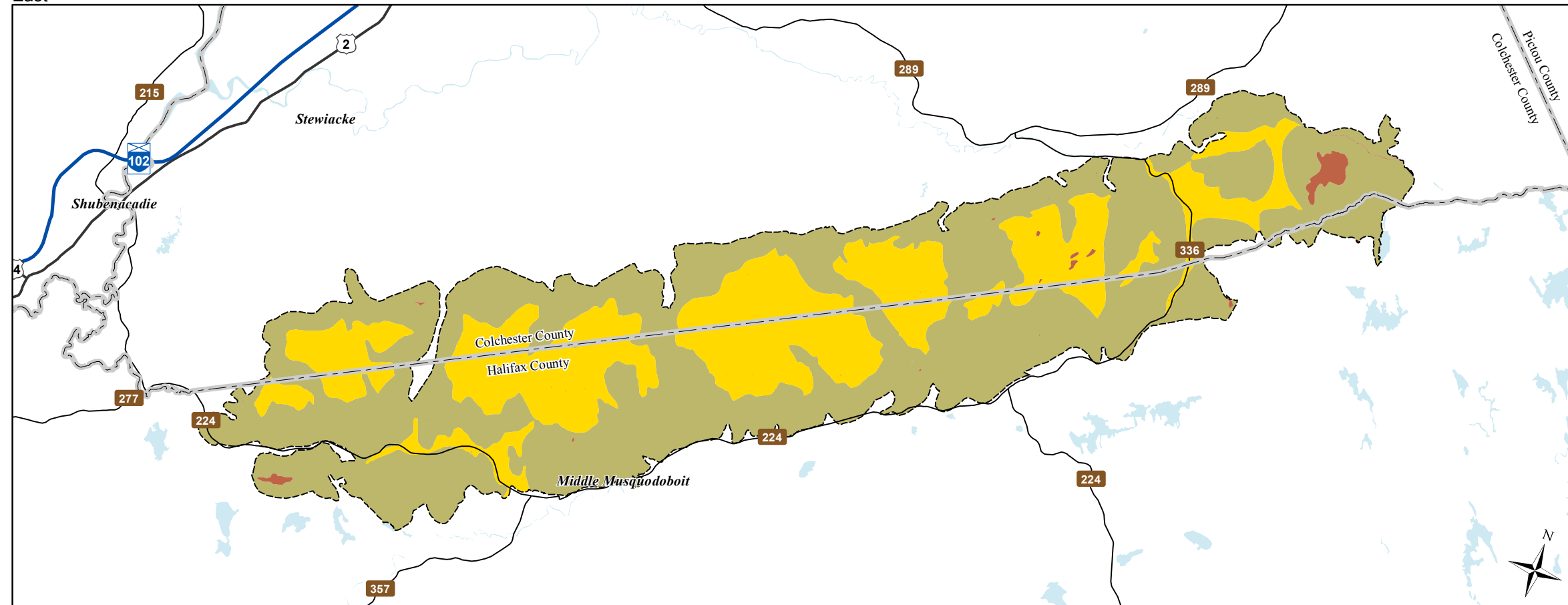
Rawdon Wittenburg Hills - Ecodistrict 410

Legend

-  Ecodistrict Boundary
-  Gap
-  Infrequent
-  Open Seral
-  Water



East



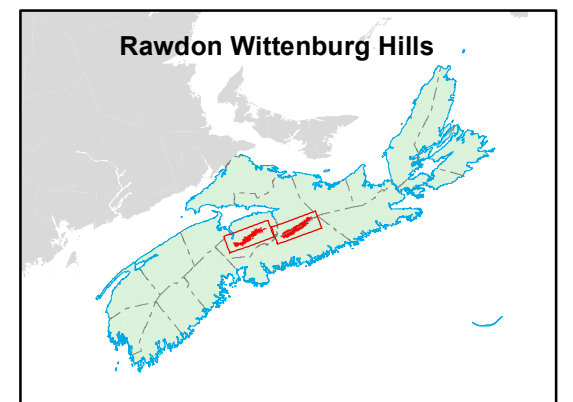
Map Notes

Base data derived from the Nova Scotia Topographic Database (NSTDB). Copyright Province of Nova Scotia. All rights reserved. Service Nova Scotia & Municipal Relations, Nova Scotia Geomatics Centre, 160 Willow St., Amherst, Nova Scotia. Species status and locations data from Atlantic Canada Conservation Data Centre.

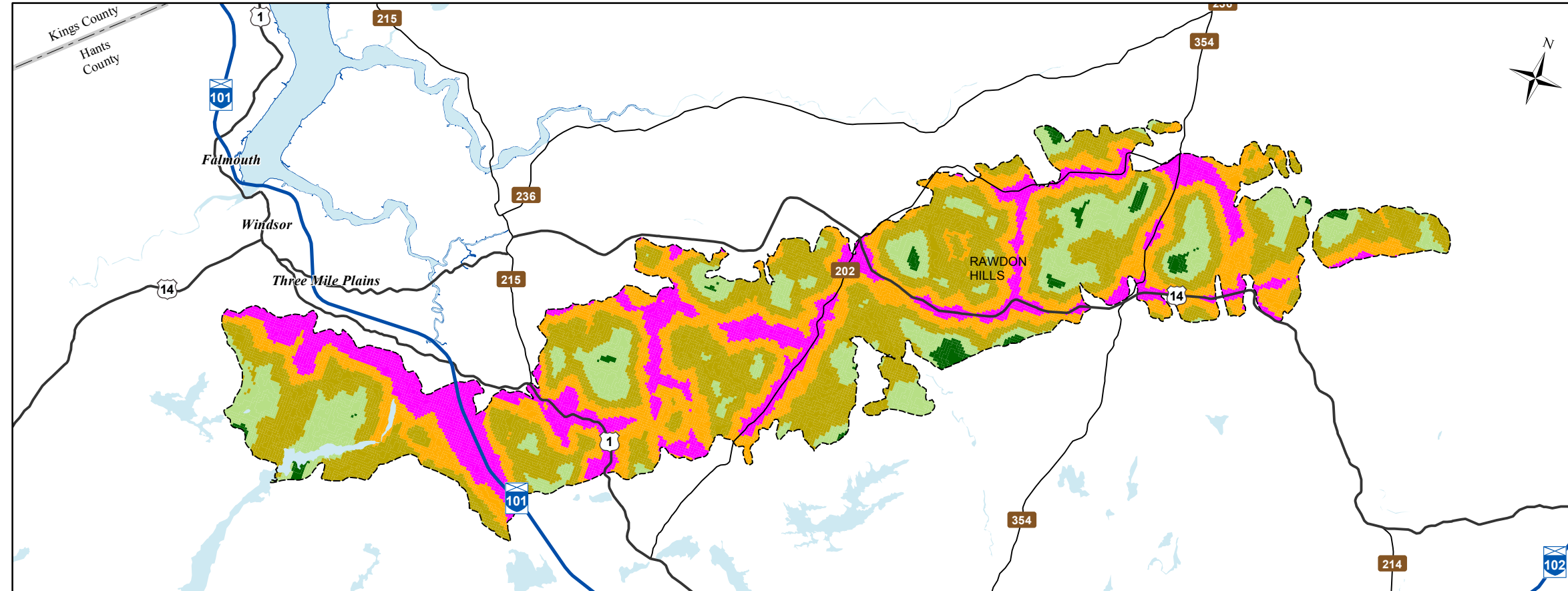
Additional information derived from Nova Scotia Department of Natural Resources, Geographic Information Systems (GIS) databases.

Disclaimer

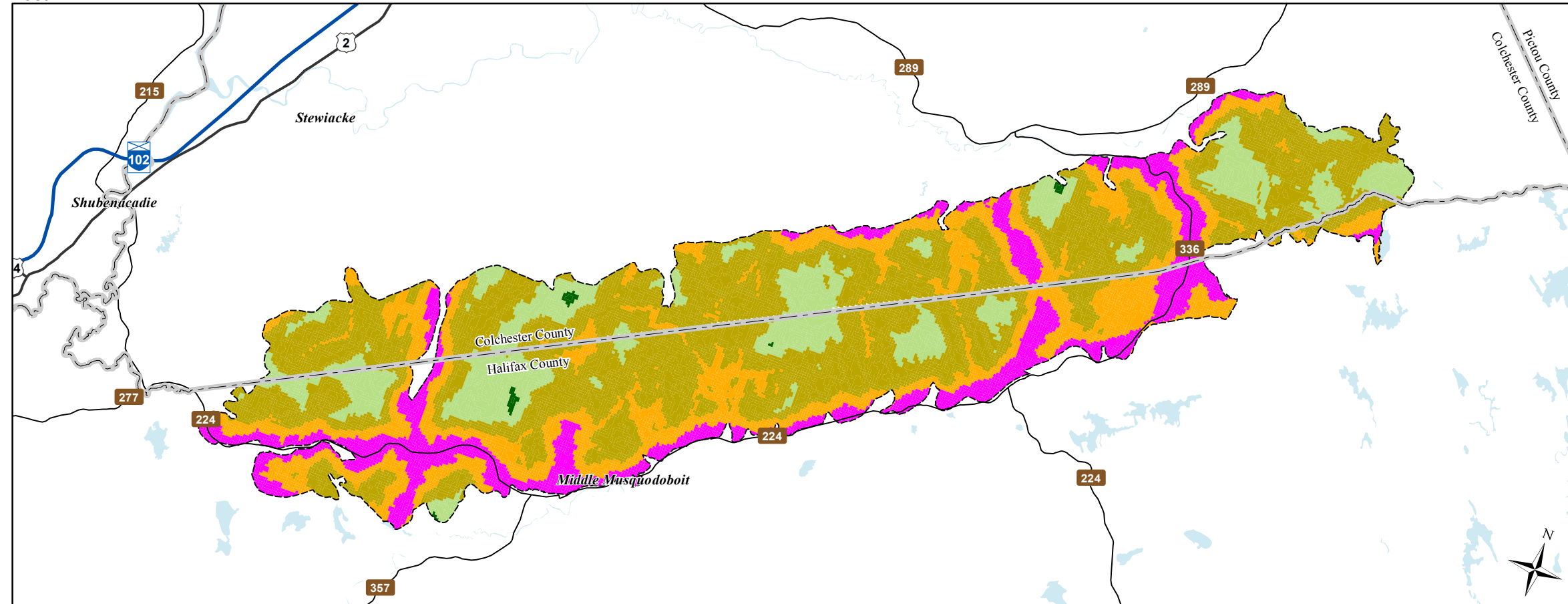
The information on this map may have come from a variety of government and non-government sources and is subject to change without notice. The Nova Scotia Department of Natural Resources accepts no liability for any errors, deficiencies, or faults on this map.



West









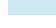
East

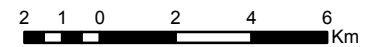


Ecological Landscape Analysis Map 5 Road Index

Rawdon Wittenburg Hills - Ecodistrict 410

Legend

-  Ecodistrict Boundary
-  Remote
-  Forest Resource
-  Mixed Rural
-  Agriculture Suburban
-  Urban
-  Water



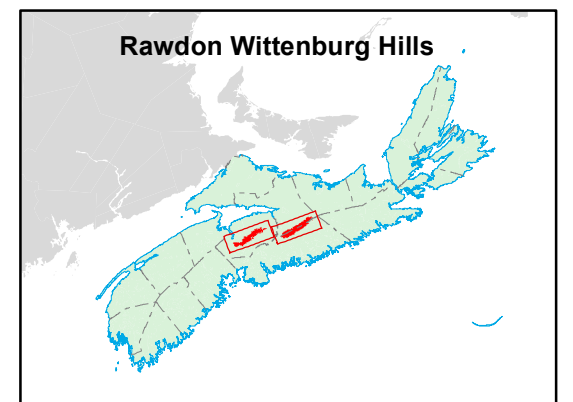
Map Notes

Base data derived from the Nova Scotia Topographic Database (NSTDB). Copyright Province of Nova Scotia. All rights reserved. Service Nova Scotia & Municipal Relations, Nova Scotia Geomatics Centre, 160 Willow St., Amherst, Nova Scotia. Species status and locations data from Atlantic Canada Conservation Data Centre.

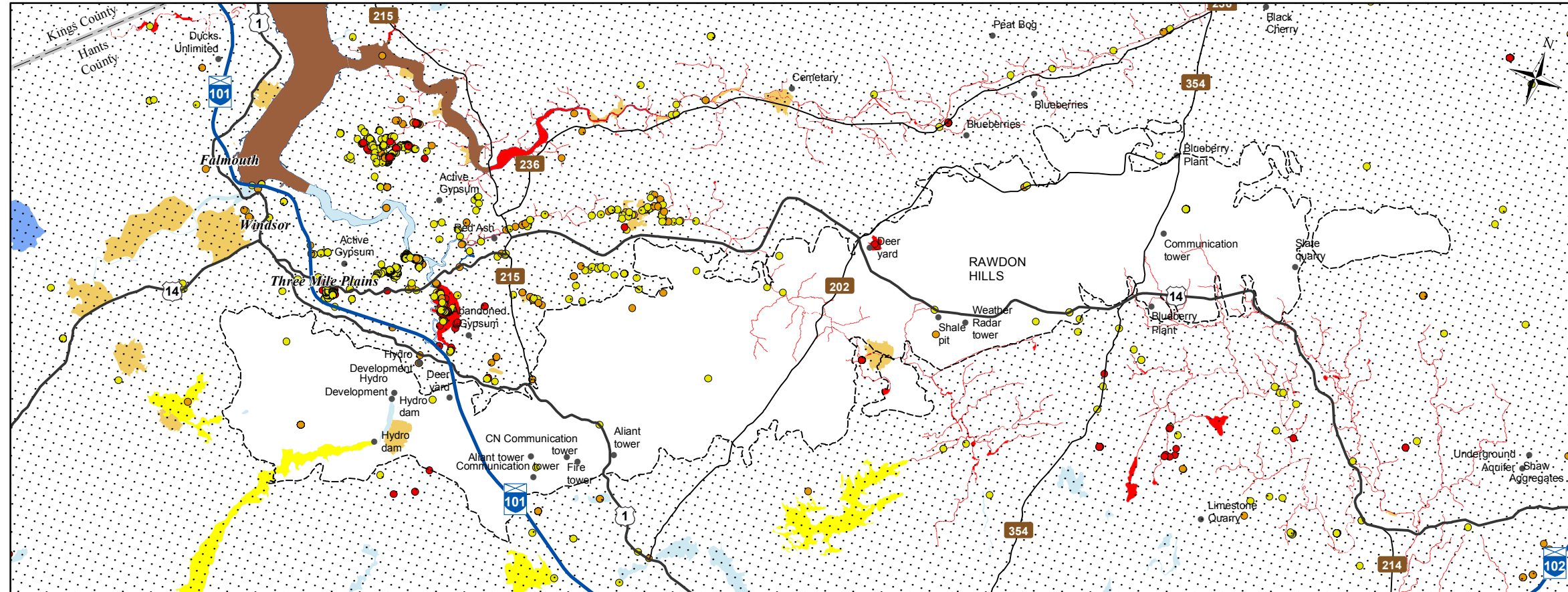
Additional information derived from Nova Scotia Department of Natural Resources, Geographic Information Systems (GIS) databases.

Disclaimer

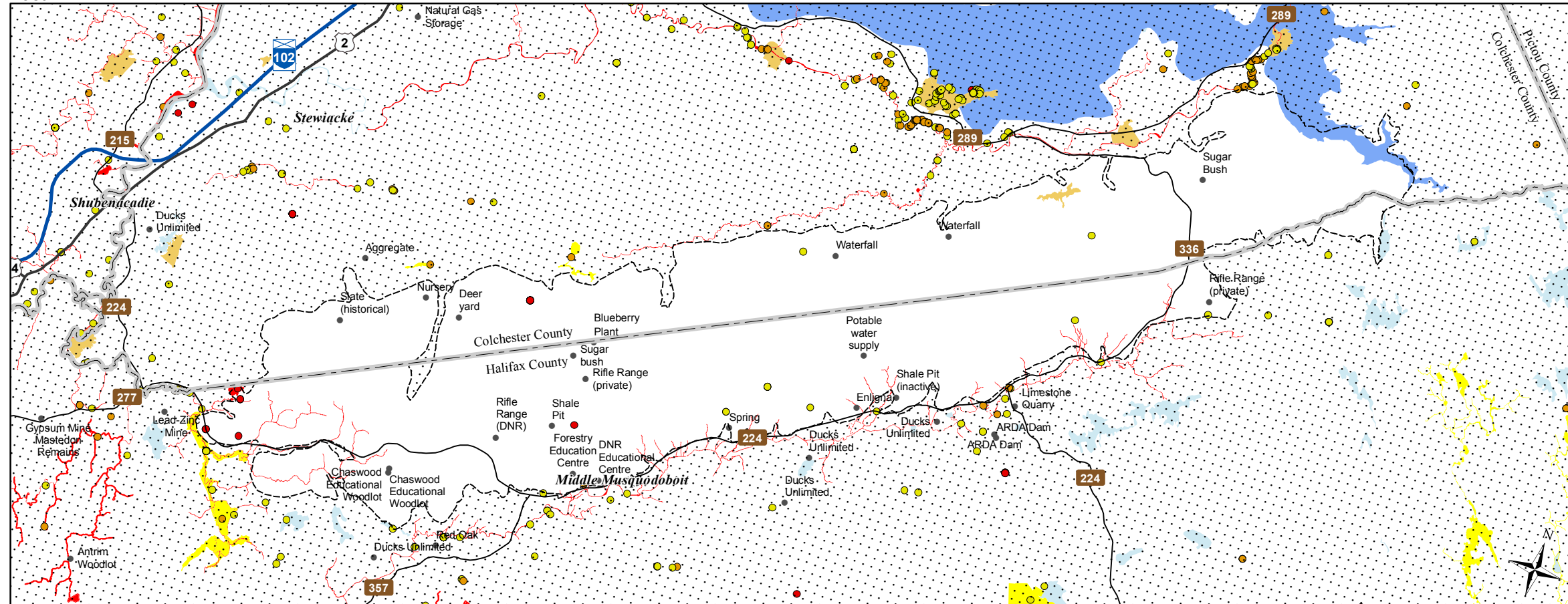
The information on this map may have come from a variety of government and non-government sources and is subject to change without notice. The Nova Scotia Department of Natural Resources accepts no liability for any errors, deficiencies, or faults on this map.



West



East



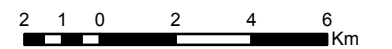
Date: 6/26/2015

Ecological Landscape Analysis Map 6 Special Occurrences - Species

Rawdon Wittenburg Hills - Ecodistrict 410

Legend

- Ecodistrict Boundary
- Outside Ecodistrict
- Other Occurrences (Point of Interest)
- At Risk
- May Be At Risk
- Sensitive
- Species at risk
- Species of conservation concern
- Deer wintering
- Migratory bird
- Other significant habitat
- Water



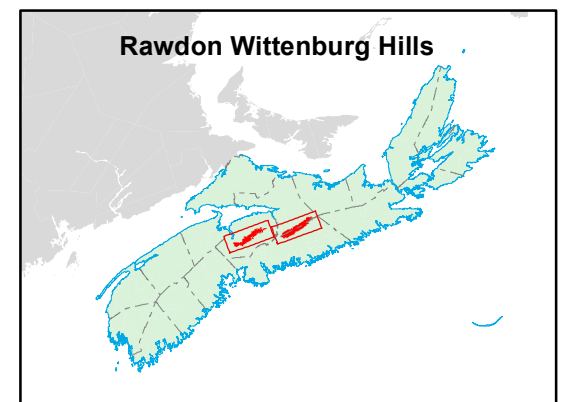
Map Notes

Base data derived from the Nova Scotia Topographic Database (NSTDB). Copyright Province of Nova Scotia. All rights reserved. Service Nova Scotia & Municipal Relations, Nova Scotia Geomatics Centre, 160 Willow St., Amherst, Nova Scotia. Species status and locations data from Atlantic Canada Conservation Data Centre.

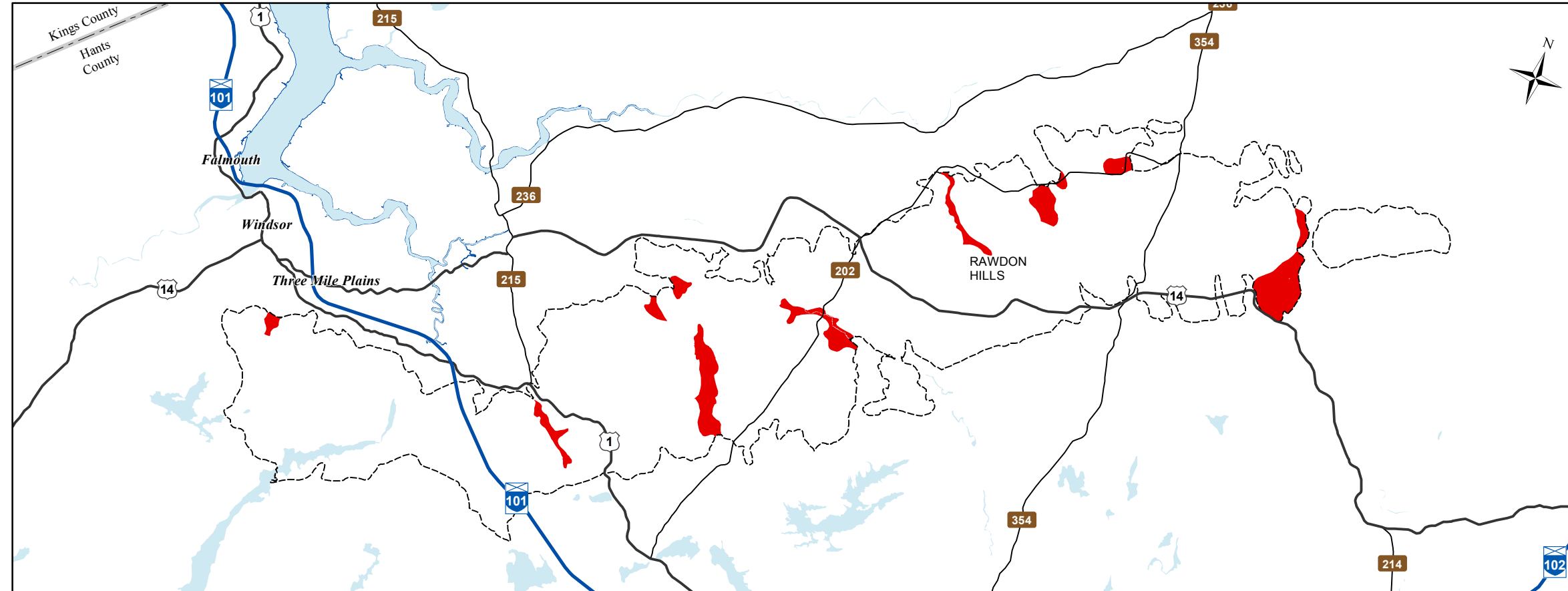
Additional information derived from Nova Scotia Department of Natural Resources, Geographic Information Systems (GIS) databases.

Disclaimer

The information on this map may have come from a variety of government and non-government sources and is subject to change without notice. The Nova Scotia Department of Natural Resources accepts no liability for any errors, deficiencies, or faults on this map.





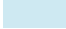
West

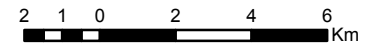


Ecological Landscape Analysis
Map 7
Rare Ecosections

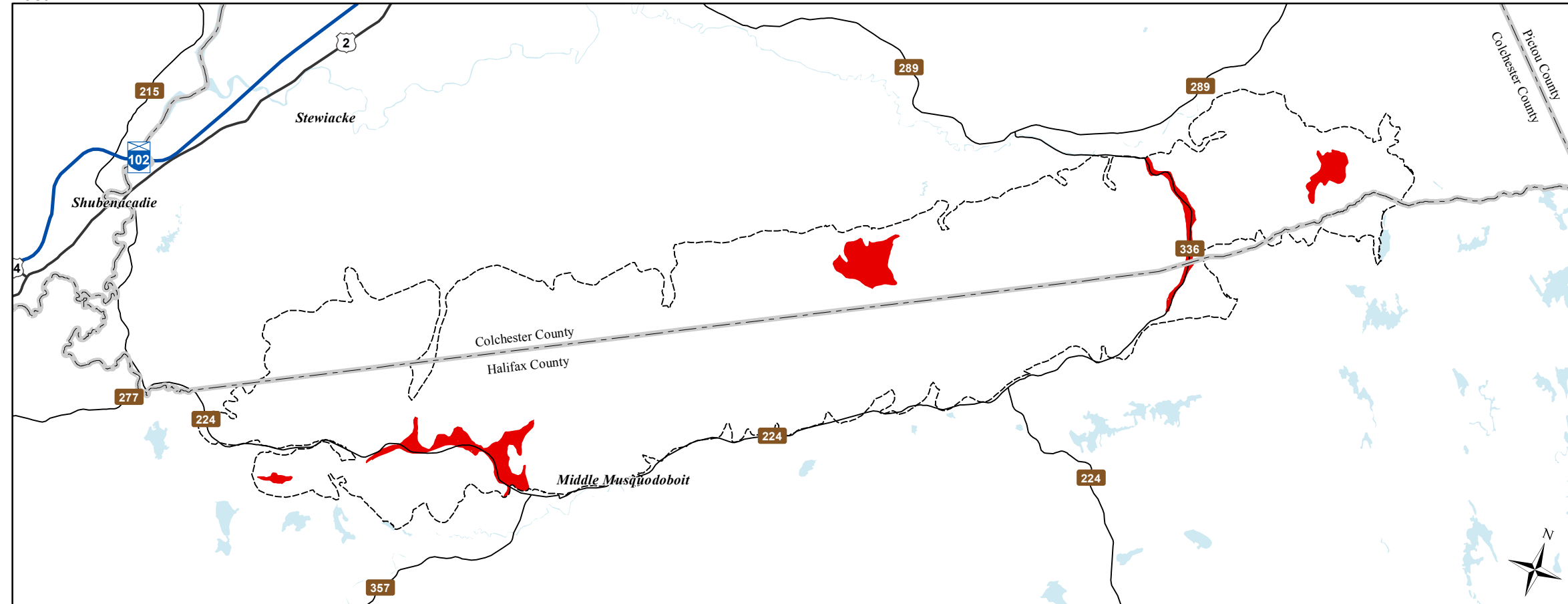
Rawdon Wittenburg Hills - Ecodistrict 410

Legend

-  Ecodistrict Boundary
-  Rare Ecosections
-  Water



East



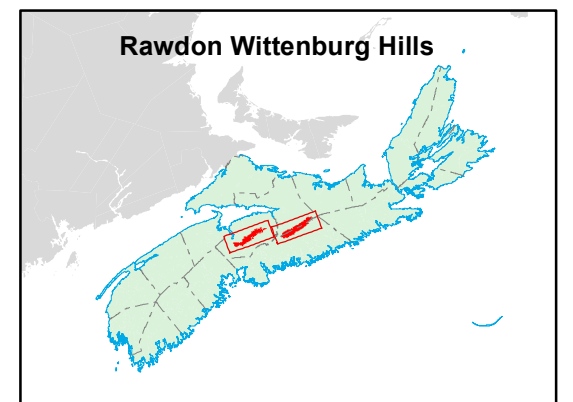
Map Notes

Base data derived from the Nova Scotia Topographic Database (NSTDB). Copyright Province of Nova Scotia. All rights reserved. Service Nova Scotia & Municipal Relations, Nova Scotia Geomatics Centre, 160 Willow St., Amherst, Nova Scotia. Species status and locations data from Atlantic Canada Conservation Data Centre.

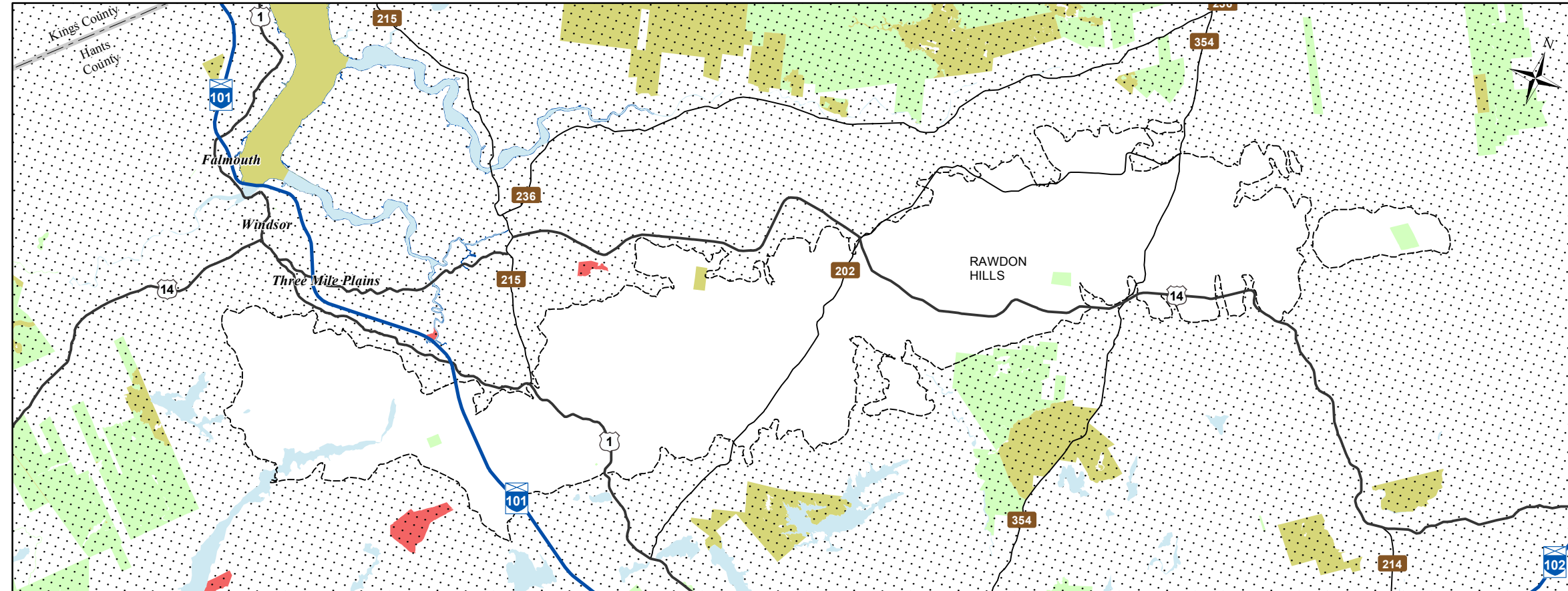
Additional information derived from Nova Scotia Department of Natural Resources, Geographic Information Systems (GIS) databases.

Disclaimer

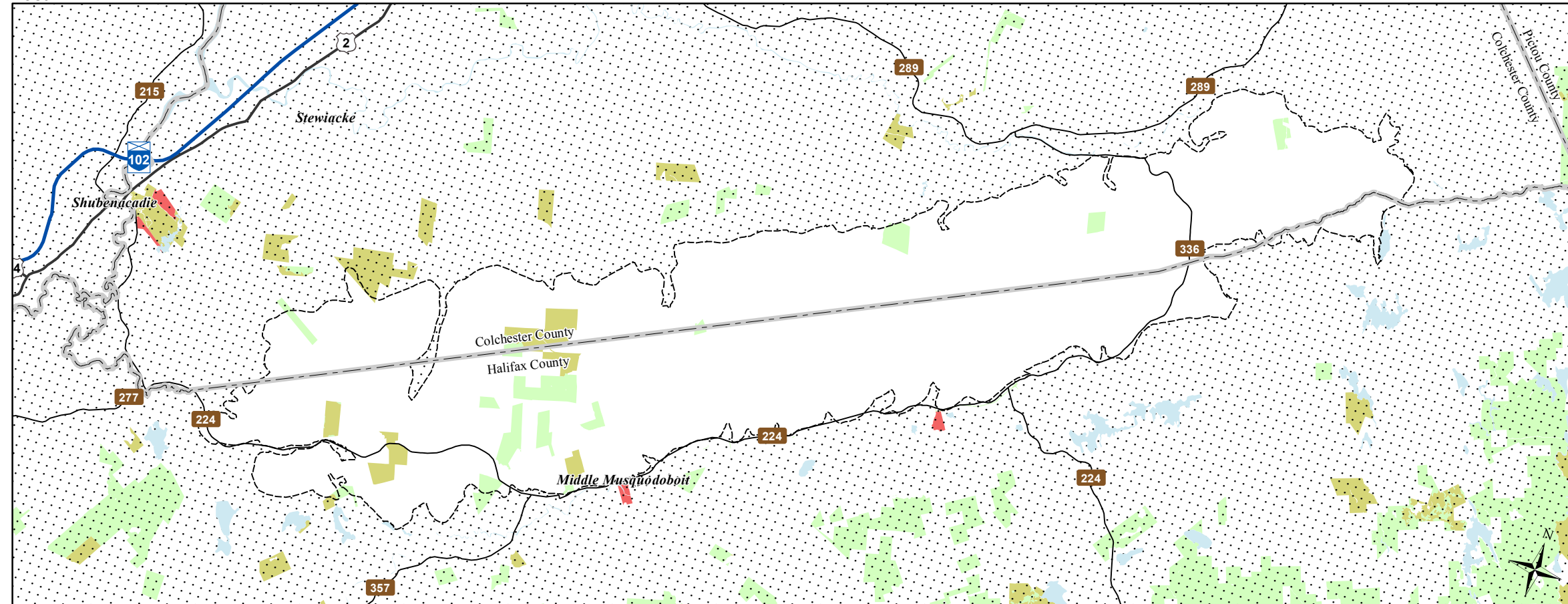
The information on this map may have come from a variety of government and non-government sources and is subject to change without notice. The Nova Scotia Department of Natural Resources accepts no liability for any errors, deficiencies, or faults on this map.



West







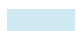
East

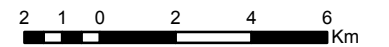


Ecological Landscape Analysis Map 8 IRM Classes

Rawdon Wittenburg Hills - Ecodistrict 410

Legend

-  Ecodistrict Boundary
-  C1 - General Resource Use
-  C2 - Multiple and Adaptive Resource Use
-  C3 - Protected and Limited Use
-  Water



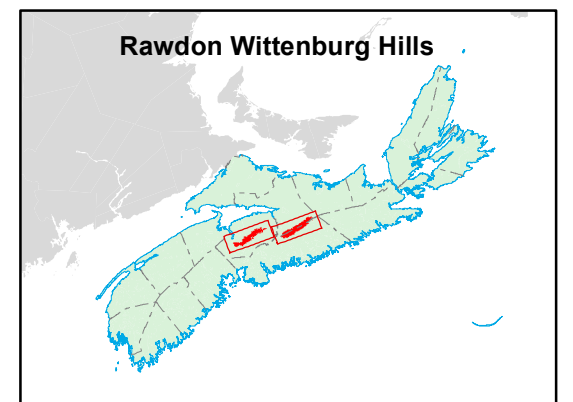
Map Notes

Base data derived from the Nova Scotia Topographic Database (NSTDB). Copyright Province of Nova Scotia. All rights reserved. Service Nova Scotia & Municipal Relations, Nova Scotia Geomatics Centre, 160 Willow St., Amherst, Nova Scotia. Species status and locations data from Atlantic Canada Conservation Data Centre.

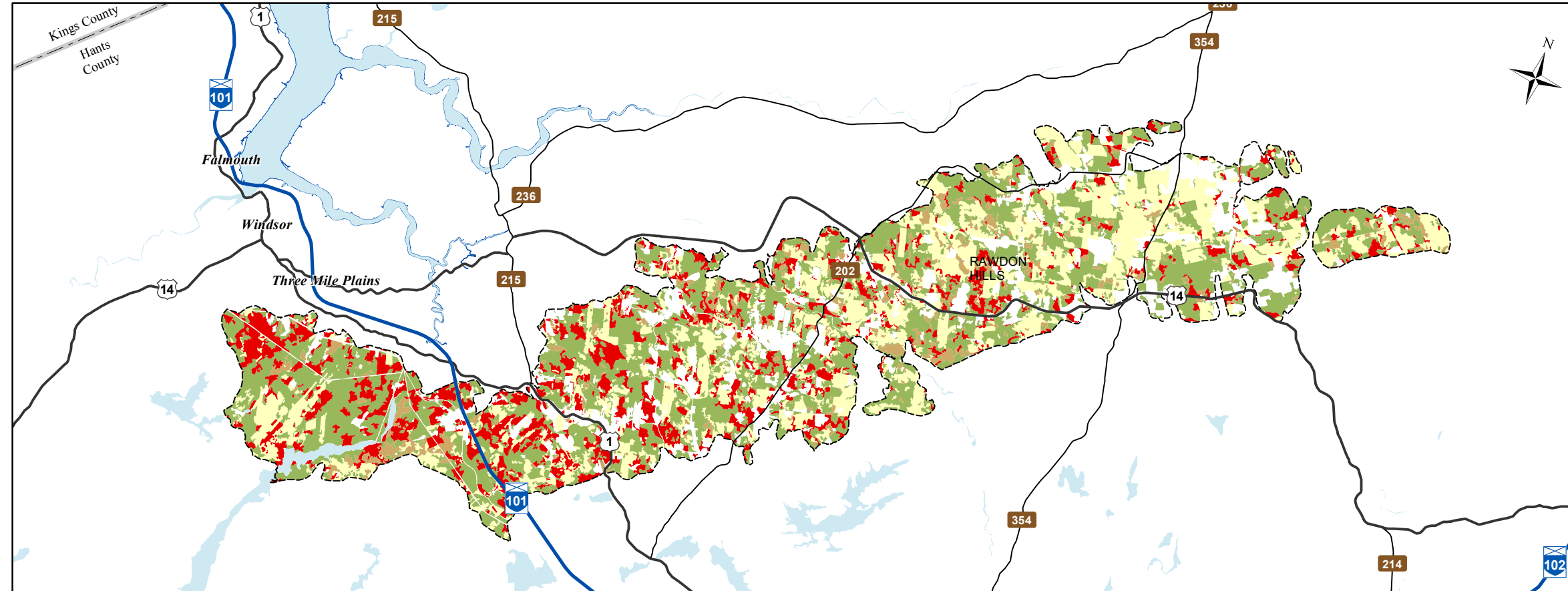
Additional information derived from Nova Scotia Department of Natural Resources, Geographic Information Systems (GIS) databases.

Disclaimer

The information on this map may have come from a variety of government and non-government sources and is subject to change without notice. The Nova Scotia Department of Natural Resources accepts no liability for any errors, deficiencies, or faults on this map.









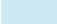
West

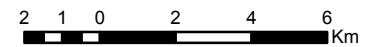


Ecological Landscape Analysis Map 9 Development Classes

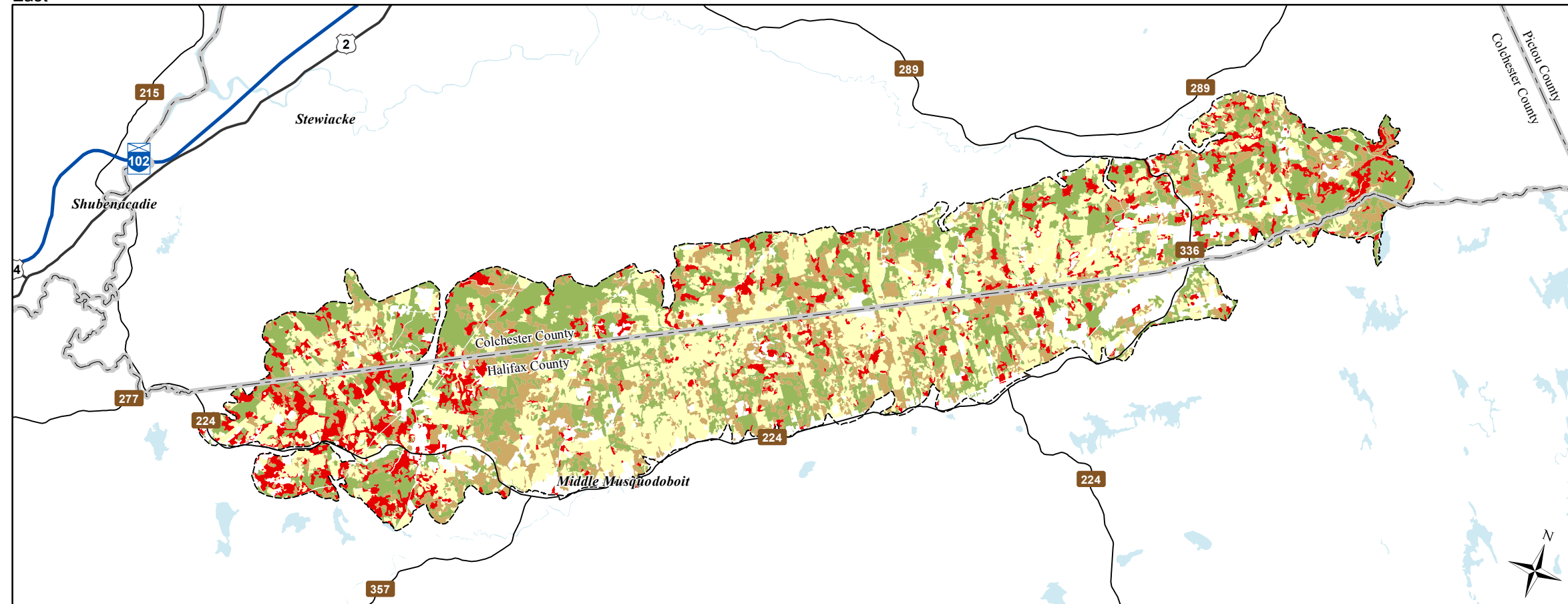
Rawdon Wittenburg Hills - Ecodistrict 410

Legend

-  Ecodistrict Boundary
-  Not forested
-  Establishment
-  Young Forest
-  Mature Timber
-  Multi-Aged / Old Forest
-  Water



East



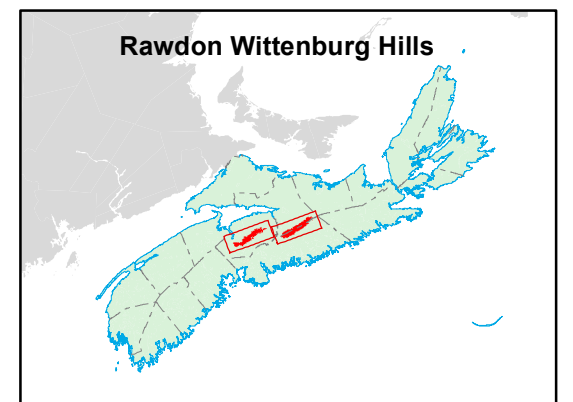
Map Notes

Base data derived from the Nova Scotia Topographic Database (NSTDB). Copyright Province of Nova Scotia. All rights reserved. Service Nova Scotia & Municipal Relations, Nova Scotia Geomatics Centre, 160 Willow St., Amherst, Nova Scotia. Species status and locations data from Atlantic Canada Conservation Data Centre.

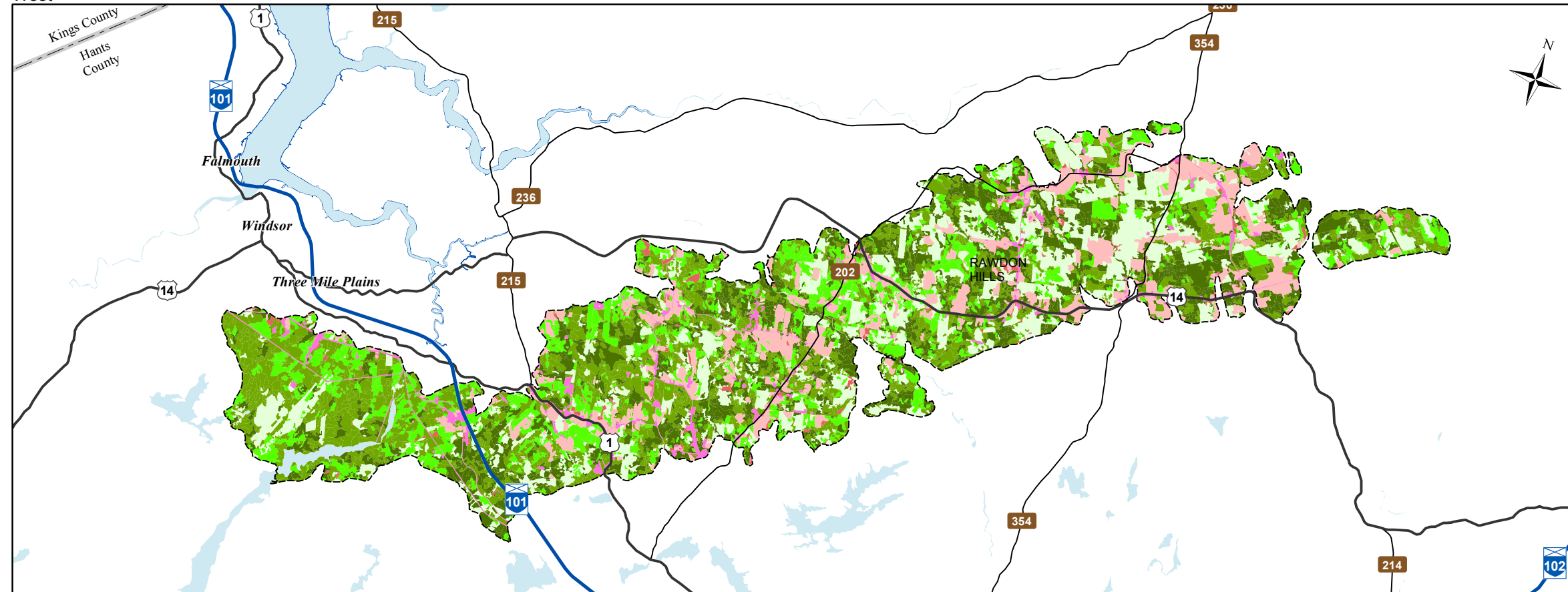
Additional information derived from Nova Scotia Department of Natural Resources, Geographic Information Systems (GIS) databases.

Disclaimer

The information on this map may have come from a variety of government and non-government sources and is subject to change without notice. The Nova Scotia Department of Natural Resources accepts no liability for any errors, deficiencies, or faults on this map.



West



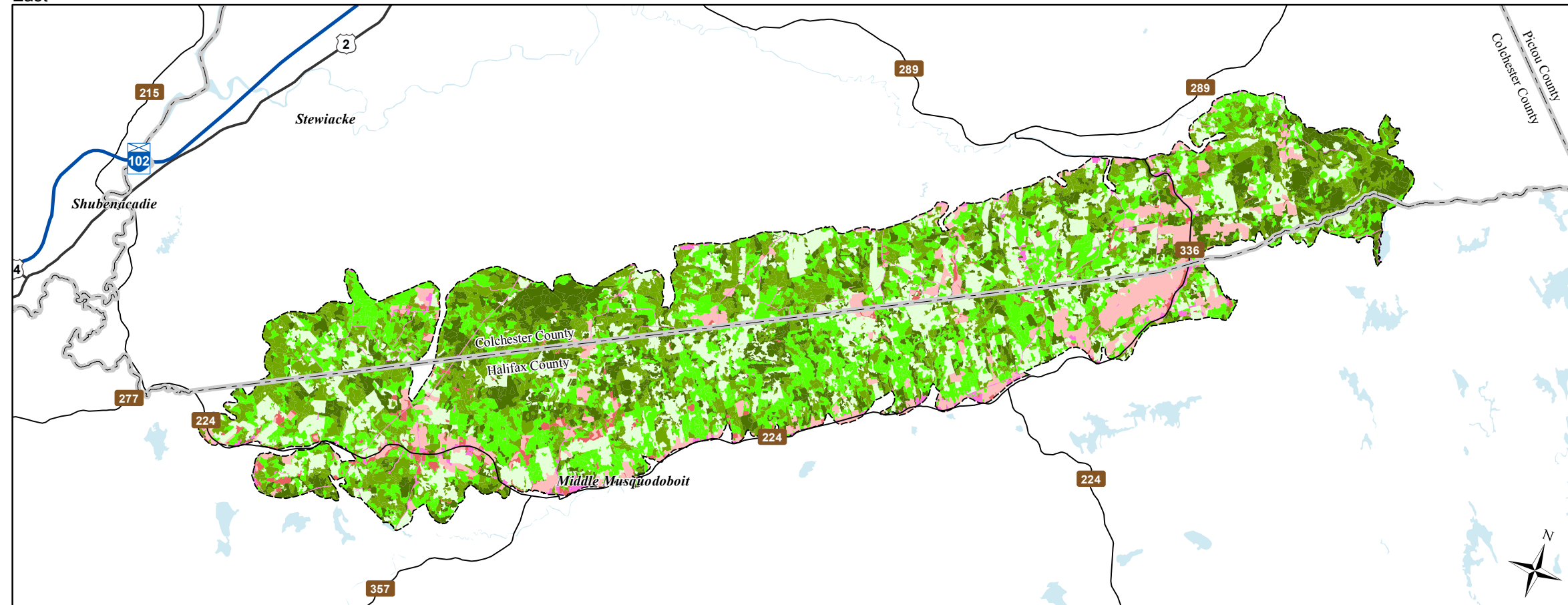
Ecological Landscape Analysis Map 10 Seral Stages

Rawdon Wittenburg Hills - Ecodistrict 410

Legend

- Ecodistrict Boundary
 - Ecological Land Cover**
 - Agriculture and Developed Vegetation
 - Shrublands and Herbaceous Vegetation
 - Sparse Vegetation and Naturally Unvegetated
 - Urban/Industrial Vegetation and Unvegetated
 - Seral Stage**
 - Unclassified (e.g. recent cut)
 - Early
 - Mid
 - Late
 - Water
- 2 1 0 2 4 6 Km

East



Map Notes

Base data derived from the Nova Scotia Topographic Database (NSTDB). Copyright Province of Nova Scotia. All rights reserved. Service Nova Scotia & Municipal Relations, Nova Scotia Geomatics Centre, 160 Willow St., Amherst, Nova Scotia. Species status and locations data from Atlantic Canada Conservation Data Centre.

Additional information derived from Nova Scotia Department of Natural Resources, Geographic Information Systems (GIS) databases.

Disclaimer

The information on this map may have come from a variety of government and non-government sources and is subject to change without notice. The Nova Scotia Department of Natural Resources accepts no liability for any errors, deficiencies, or faults on this map.

