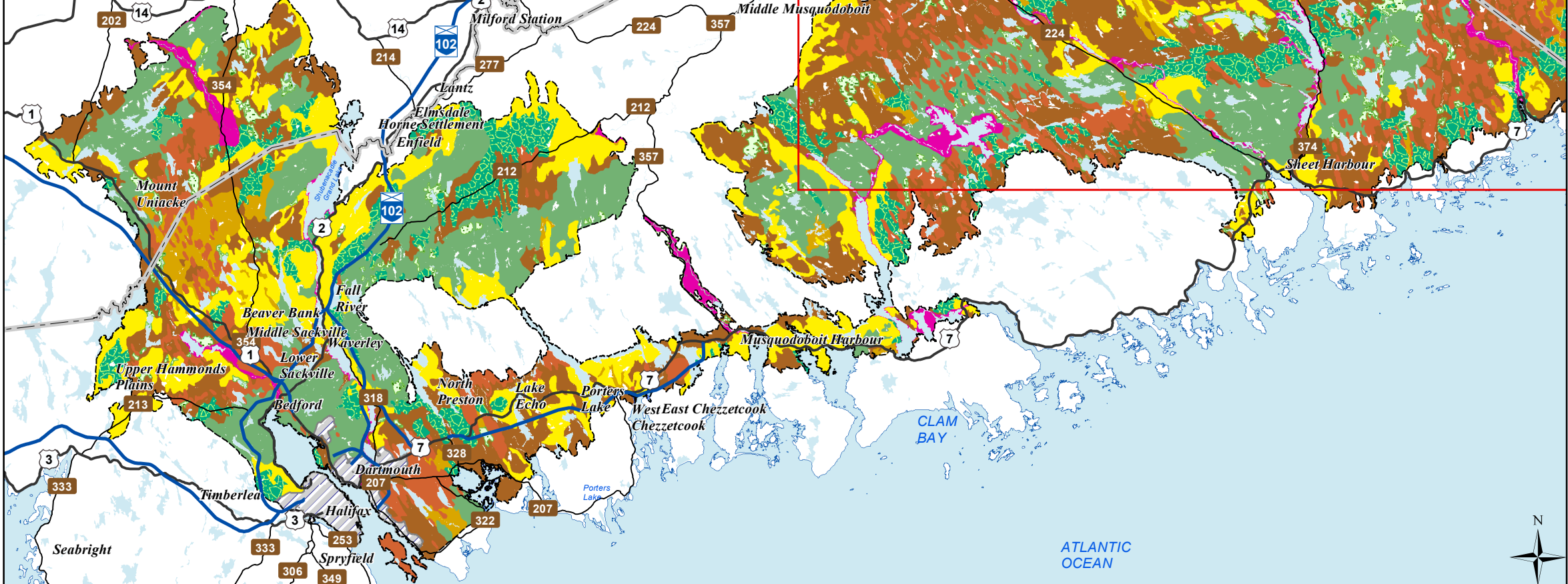


West



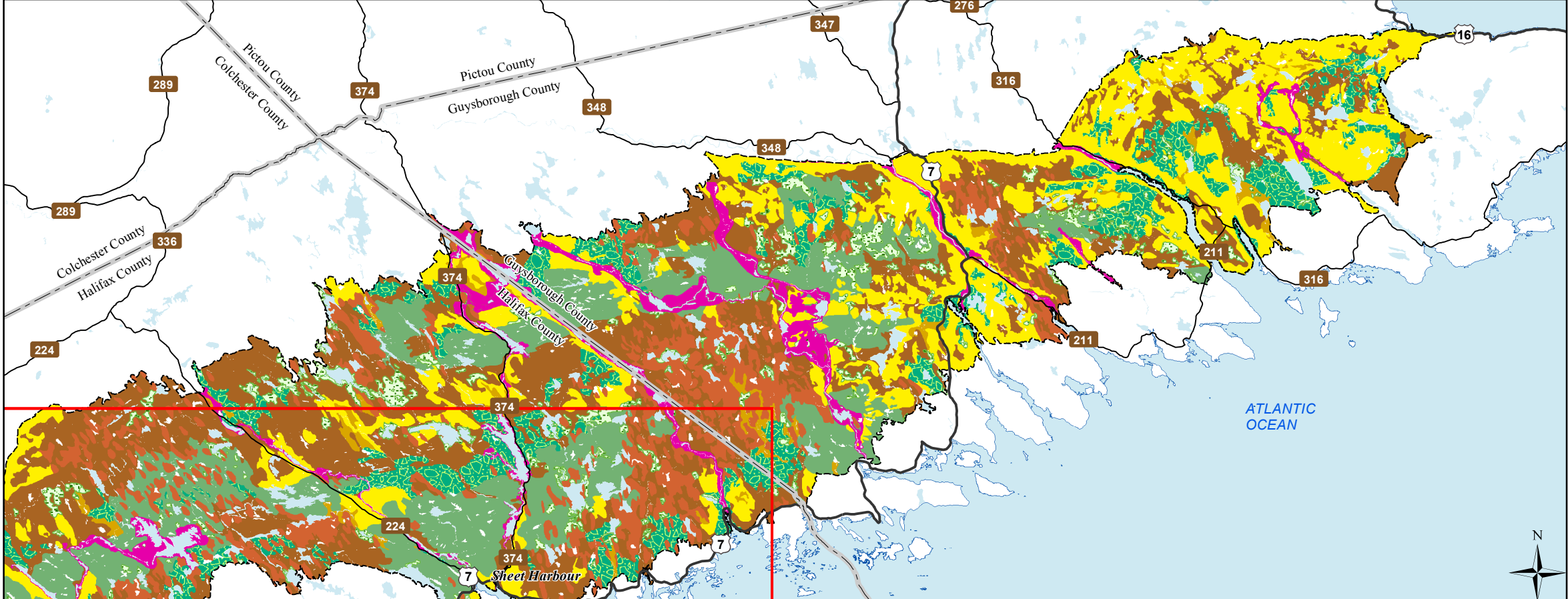
# Ecological Landscape Analysis Map A Elements

Eastern Interior - Ecodistrict 440

## Legend

- Ecodistrict Boundary
  - Valley Corridors
  - Red and Black Spruce Hummocks
  - Salt Marshes
  - Spruce Hemlock Pine Hummocks and Hills
  - Spruce Pine Flats
  - Spruce Pine Hummocks
  - Tolerant Hardwood Drumlins and Hummocks
  - Tolerant Mixedwood Hills
  - Urban
  - Wetlands
  - Water
- 2 10 2 4 6 8 10 12 14 16 18 Km

East



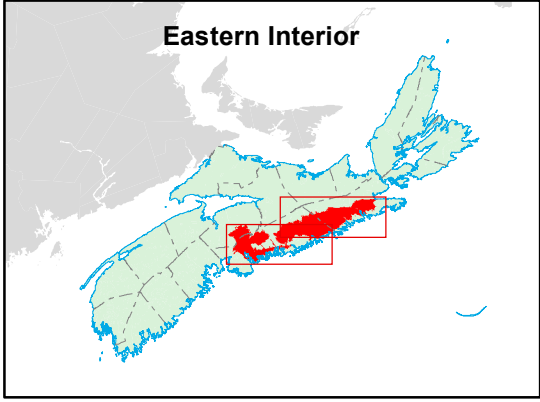
## Map Notes

Base data derived from the Nova Scotia Topographic Database (NSTDB). Copyright Province of Nova Scotia. All rights reserved. Service Nova Scotia & Municipal Relations, Nova Scotia Geomatics Centre, 160 Willow St., Amherst, Nova Scotia. Species status and locations data from Atlantic Canada Conservation Data Centre.

Additional information derived from Nova Scotia Department of Natural Resources, Geographic Information Systems (GIS) databases.

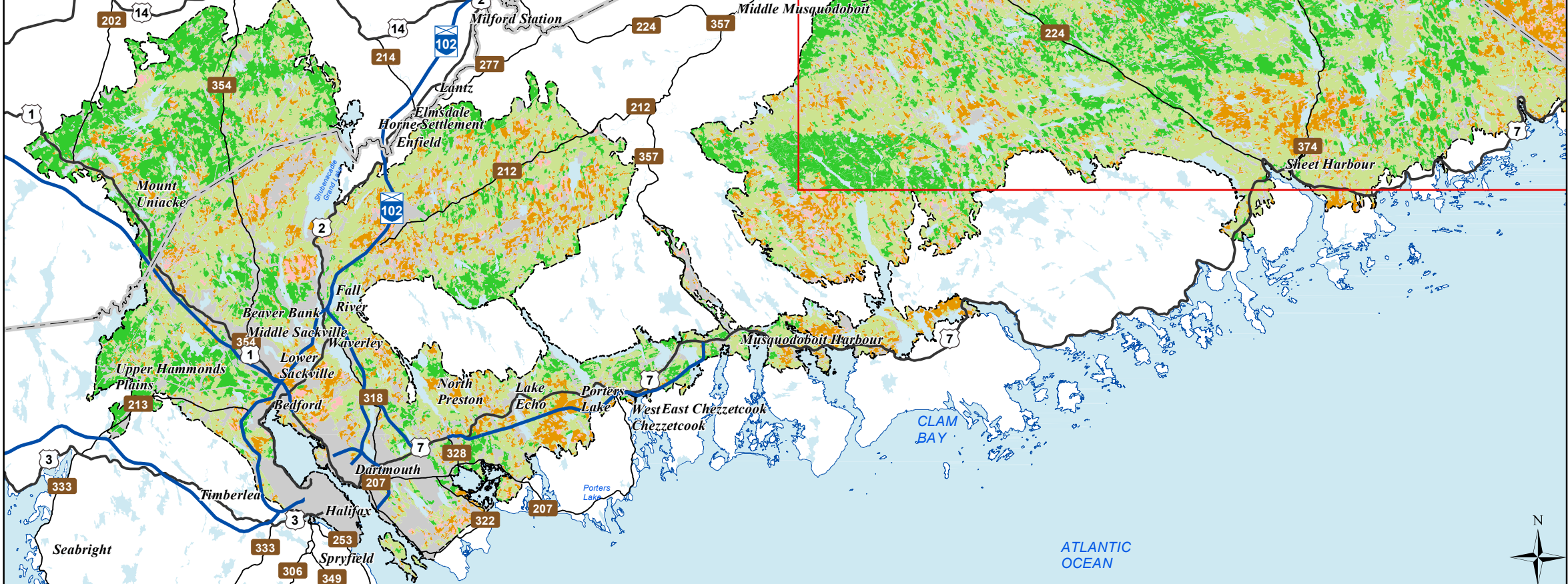
## Disclaimer

The information on this map may have come from a variety of government and non-government sources and is subject to change without notice. The Nova Scotia Department of Natural Resources accepts no liability for any errors, deficiencies, or faults on this map.





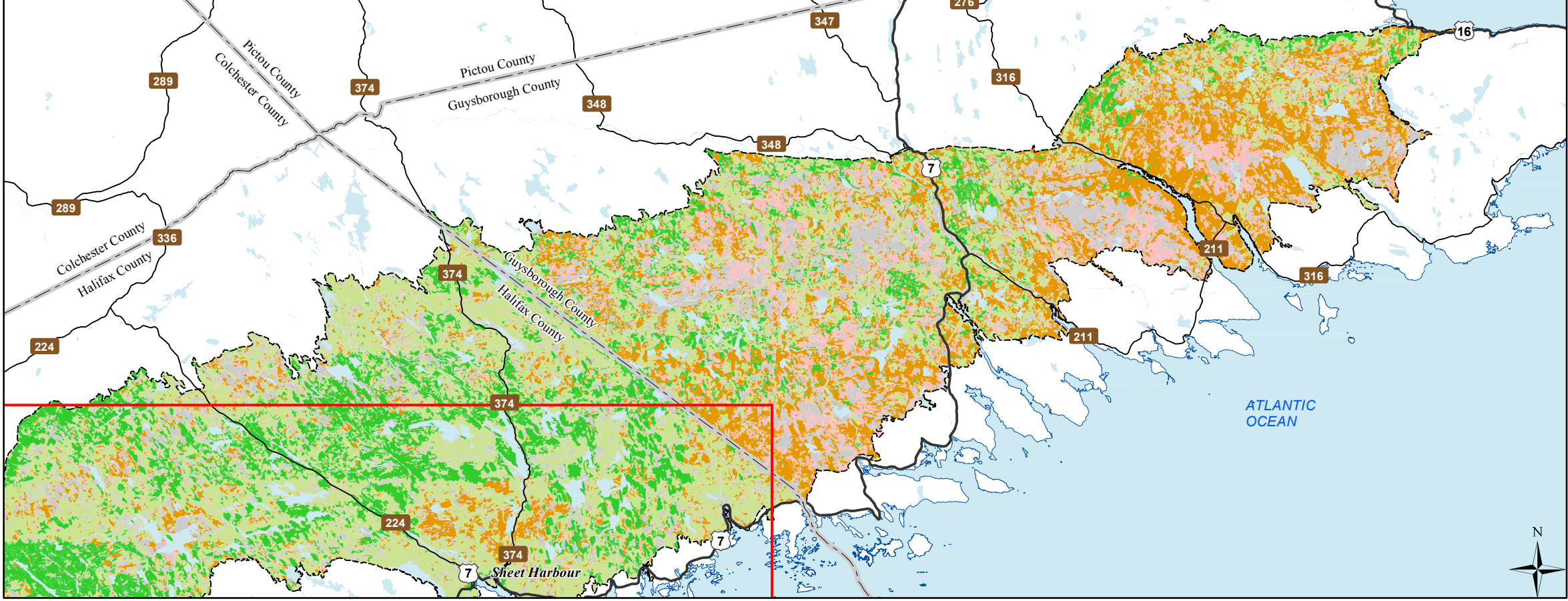
West



**Ecological Landscape Analysis**  
**Map 1**  
**Land Capability**  
Eastern Interior - Ecodistrict 440

- Legend**
- Ecodistrict Boundary
  - 0 (No capability/converted)
  - 1 - 3 (Low)
  - 4 - (Low - Medium)
  - 5 - (Medium)
  - 6+ - (High)
  - Water

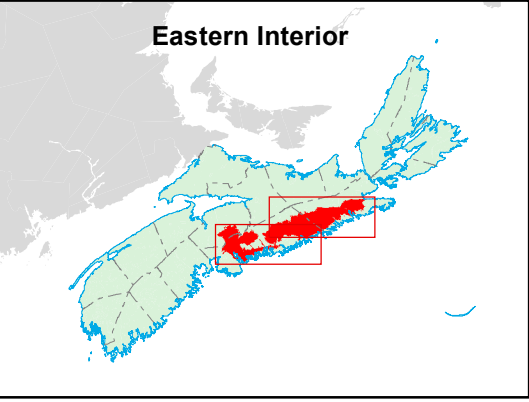
East



**Map Notes**  
Base data derived from the Nova Scotia Topographic Database (NSTDB). Copyright Province of Nova Scotia. All rights reserved. Service Nova Scotia & Municipal Relations, Nova Scotia Geomatics Centre, 160 Willow St., Amherst, Nova Scotia. Species status and locations data from Atlantic Canada Conservation Data Centre.

Additional information derived from Nova Scotia Department of Natural Resources, Geographic Information Systems (GIS) databases.

**Disclaimer**  
The information on this map may have come from a variety of government and non-government sources and is subject to change without notice. The Nova Scotia Department of Natural Resources accepts no liability for any errors, deficiencies, or faults on this map.



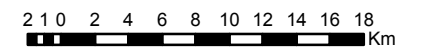


Eastern Interior - Ecodistrict 440

Eastern Interior - Ecodistrict 440

Legend:

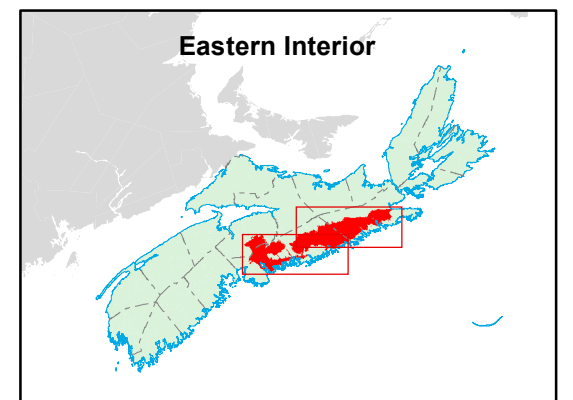
- Ecodistrict Boundary
- Flows
- Valley Corridors
- Red and Black Spruce Hummocks
- Salt Marshes
- Spruce Hemlock Pine Hummocks and Hills
- Spruce Pine Flats
- Spruce Pine Hummocks
- Tolerant Hardwood Drumlins and Hummocks
- Tolerant Mixedwood Hills
- Urban
- Wetlands
- Water



Base data derived from the Nova Scotia Topographic Database (NSTDB). Copyright Province of Nova Scotia. All rights reserved. Service Nova Scotia & Municipal Relations, Nova Scotia Geomatics Centre, 160 Willow St., Amherst, Nova Scotia. Species status and locations data from Atlantic Canada Conservation Data Centre.

Additional information derived from Nova Scotia Department of Natural Resources, Geographic Information Systems (GIS) databases.

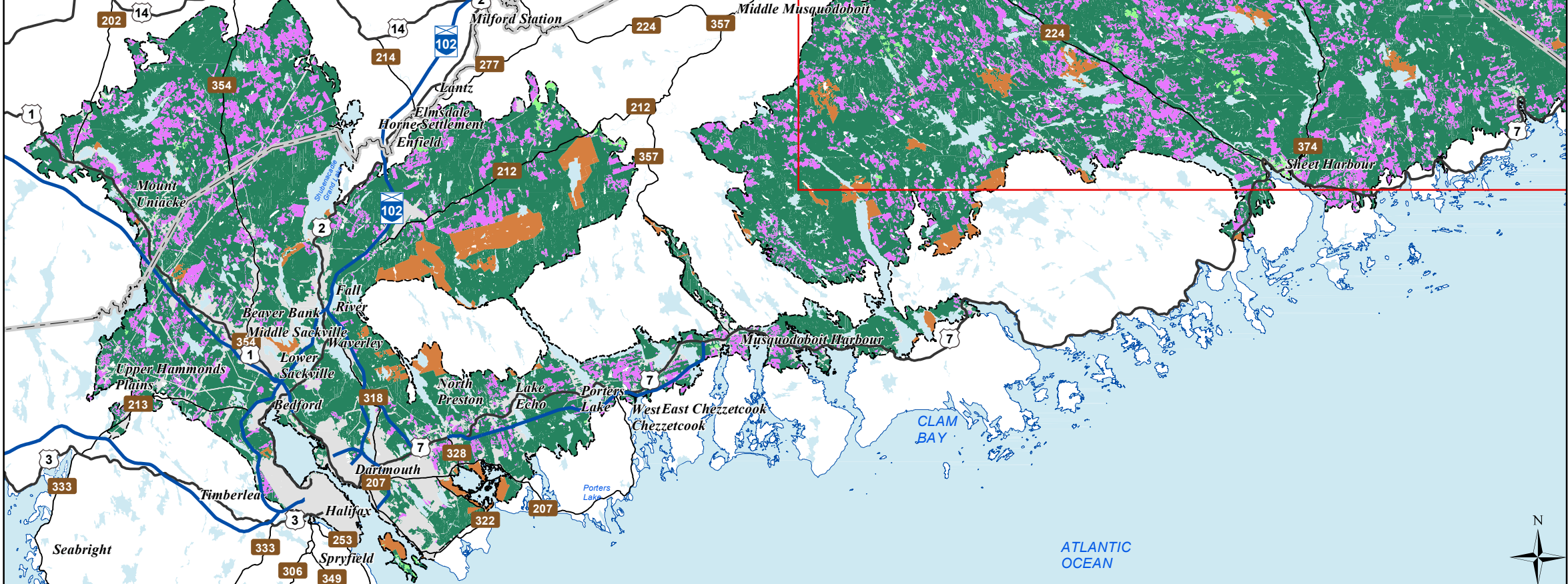
The information on this map may have come from a variety of government and non-government sources and is subject to change without notice. The Nova Scotia Department of Natural Resources accepts no liability for any errors, deficiencies, or faults on this map.



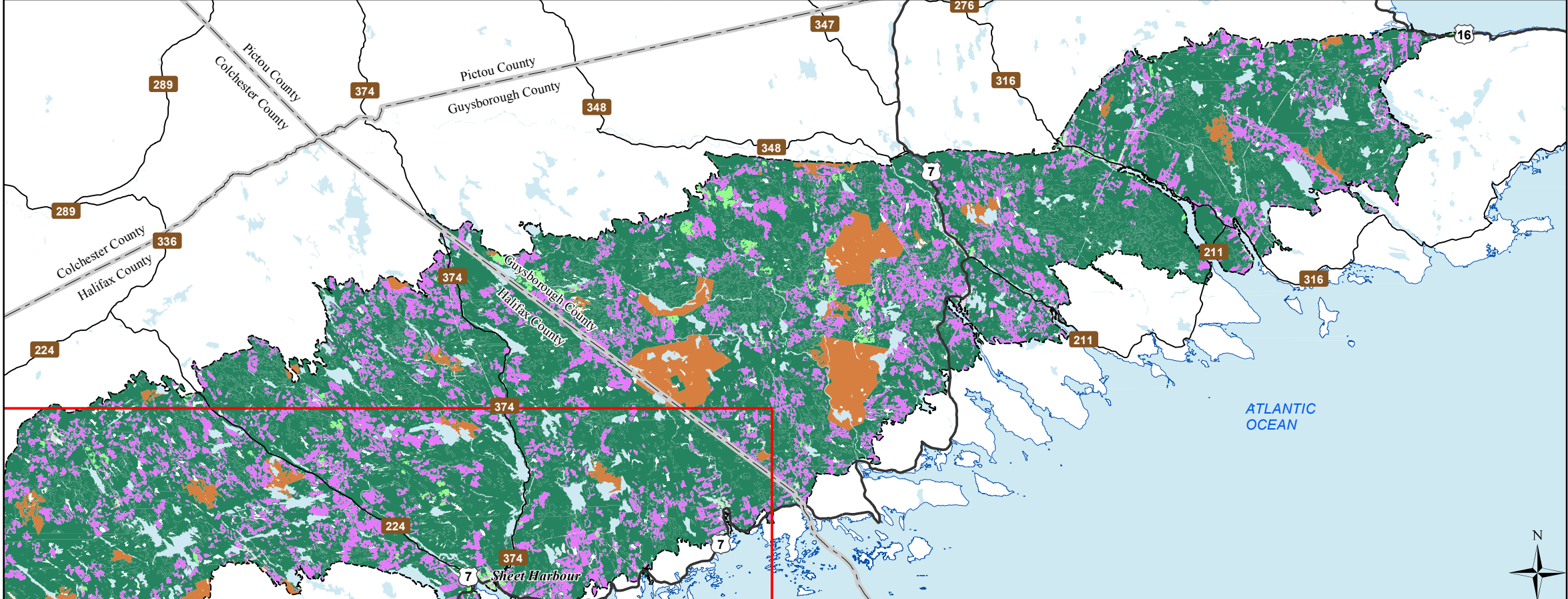
Date: 6/26/2015



West



East

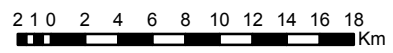


# Ecological Landscape Analysis Map 3 Ecological Emphasis Classes

Eastern Interior - Ecodistrict 440

## Legend

- Ecodistrict Boundary
- Reserve
- Extensive
- Intensive
- Converted
- Unclassified
- Water



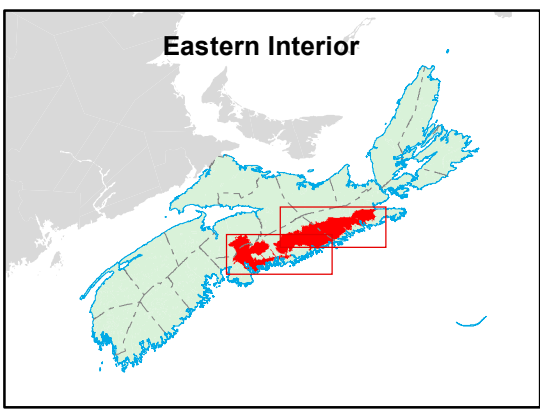
## Map Notes

Base data derived from the Nova Scotia Topographic Database (NSTDB). Copyright Province of Nova Scotia. All rights reserved. Service Nova Scotia & Municipal Relations, Nova Scotia Geomatics Centre, 160 Willow St., Amherst, Nova Scotia. Species status and locations data from Atlantic Canada Conservation Data Centre.

Additional information derived from Nova Scotia Department of Natural Resources, Geographic Information Systems (GIS) databases.

## Disclaimer

The information on this map may have come from a variety of government and non-government sources and is subject to change without notice. The Nova Scotia Department of Natural Resources accepts no liability for any errors, deficiencies, or faults on this map.



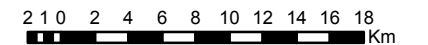


## Eastern Interior - Ecodistrict 440

Eastern Interior - Ecodistrict 440

Legend:

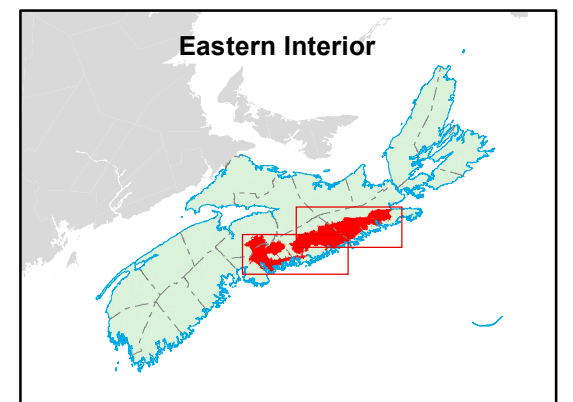
- Ecodistrict Boundary
- Frequent
- Gap
- Infrequent
- Open Seral
- Water



Base data derived from the Nova Scotia Topographic Database (NSTDB). Copyright Province of Nova Scotia. All rights reserved. Service Nova Scotia & Municipal Relations, Nova Scotia Geomatics Centre, 160 Willow St., Amherst, Nova Scotia. Species status and locations data from Atlantic Canada Conservation Data Centre.

Additional information derived from Nova Scotia Department of Natural Resources, Geographic Information Systems (GIS) databases.

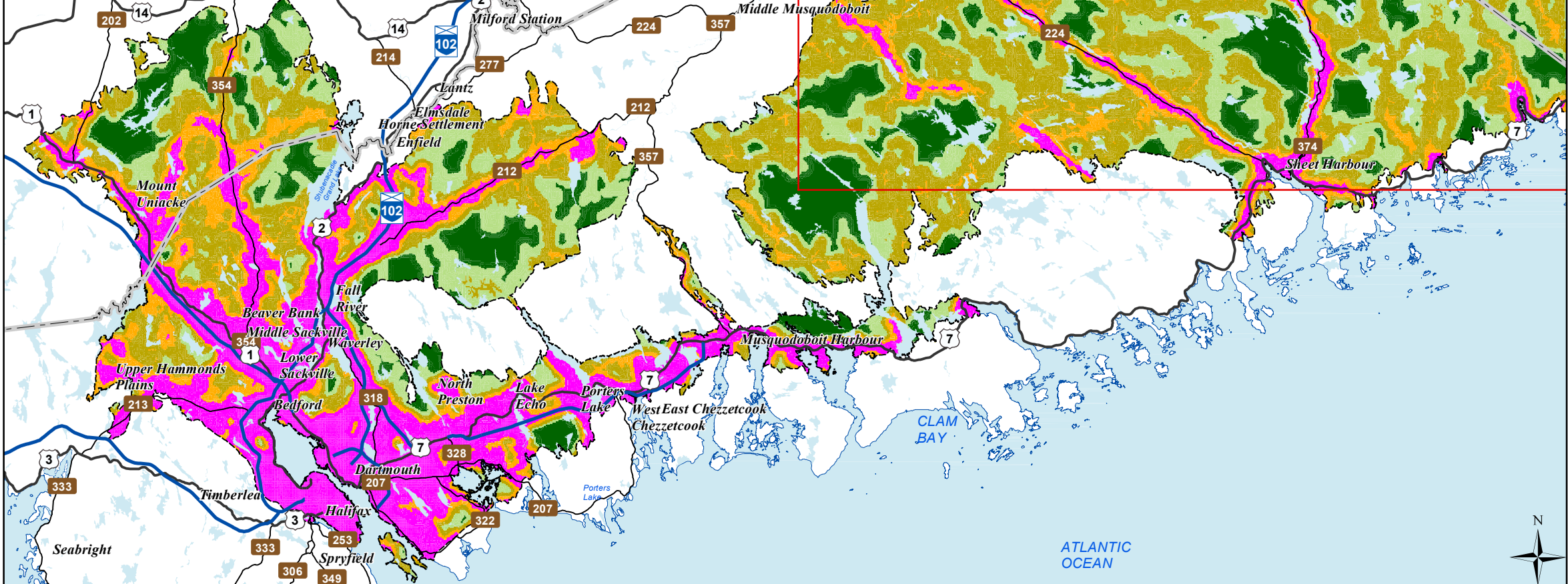
The information on this map may have come from a variety of government and non-government sources and is subject to change without notice. The Nova Scotia Department of Natural Resources accepts no liability for any errors, deficiencies, or faults on this map.



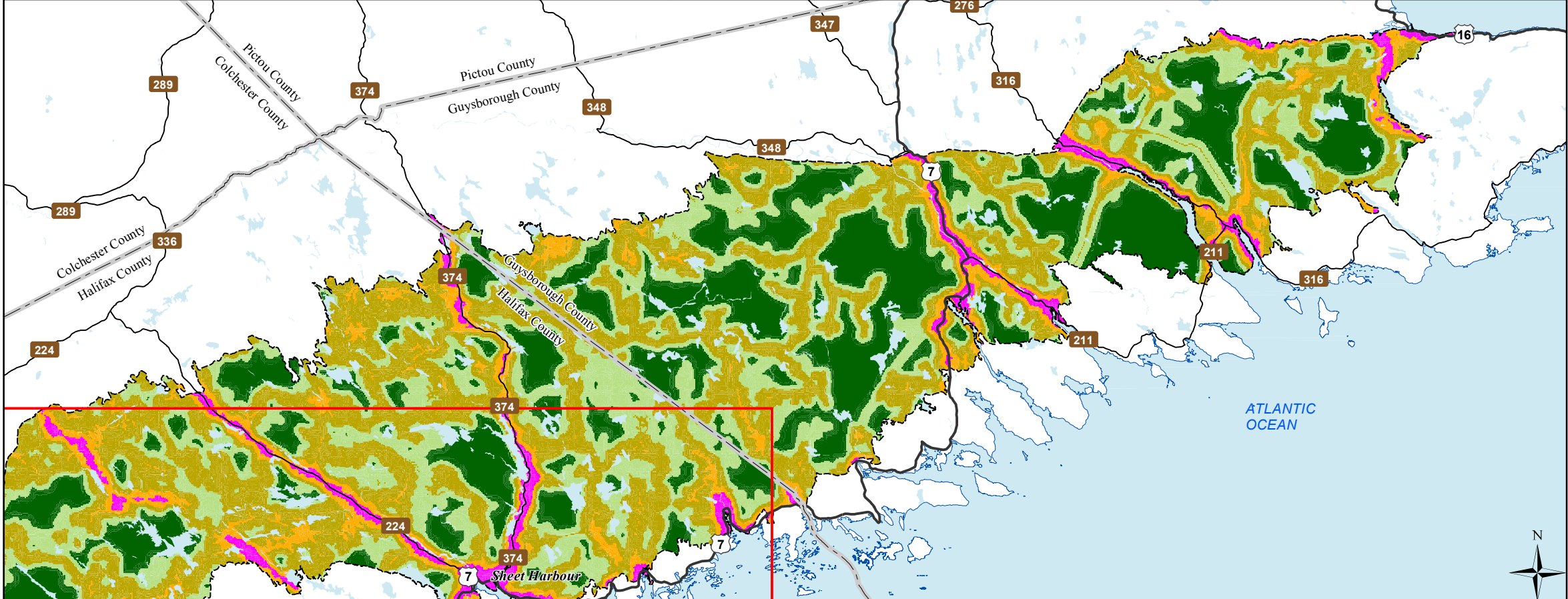
Date: 6/26/2015



West



East



# Ecological Landscape Analysis

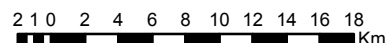
## Map 5

### Road Index

Eastern Interior - Ecodistrict 440

#### Legend

- Ecodistrict Boundary
- Remote
- Forest Resource
- Mixed Rural
- Agriculture Suburban
- Urban
- Water



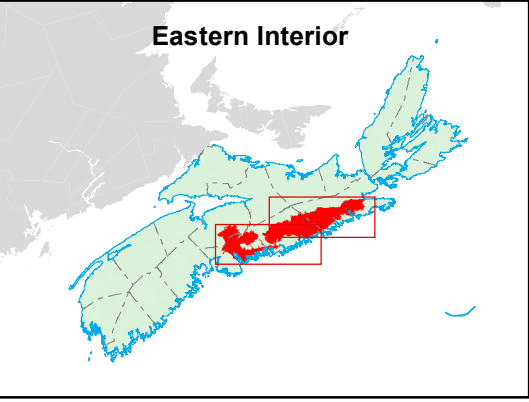
#### Map Notes

Base data derived from the Nova Scotia Topographic Database (NSTDB). Copyright Province of Nova Scotia. All rights reserved. Service Nova Scotia & Municipal Relations, Nova Scotia Geomatics Centre, 160 Willow St., Amherst, Nova Scotia. Species status and locations data from Atlantic Canada Conservation Data Centre.

Additional information derived from Nova Scotia Department of Natural Resources, Geographic Information Systems (GIS) databases.

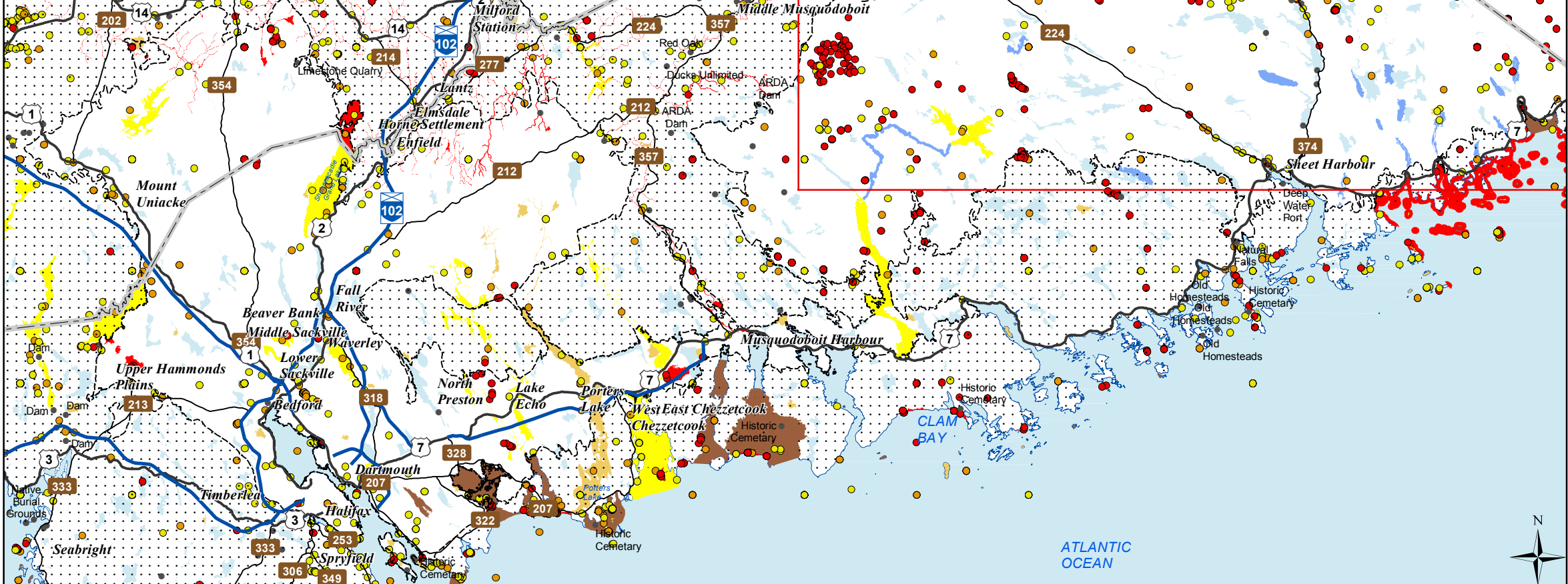
#### Disclaimer

The information on this map may have come from a variety of government and non-government sources and is subject to change without notice. The Nova Scotia Department of Natural Resources accepts no liability for any errors, deficiencies, or faults on this map.

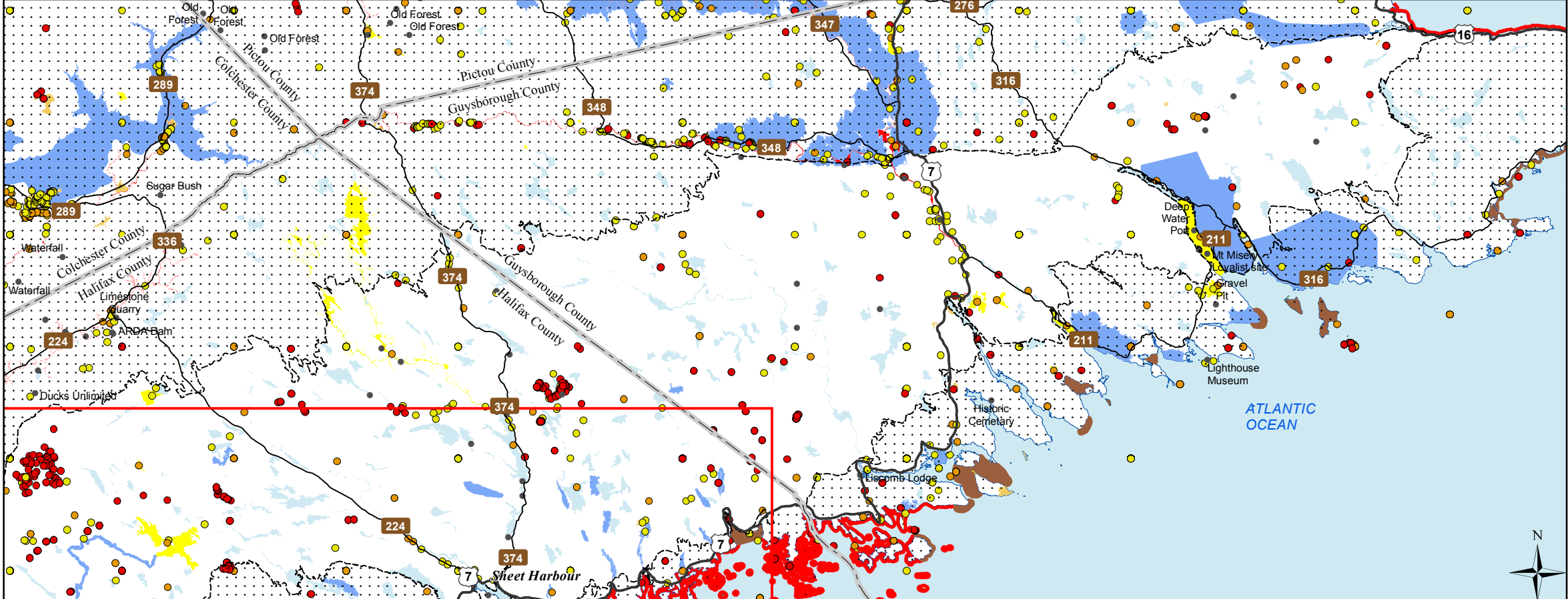




West



East



# Ecological Landscape Analysis Map 6 Special Occurrences - Species

Eastern Interior - Ecodistrict 440

## Legend

- Ecodistrict Boundary
  - Outside Ecodistrict
  - Other Occurrences (Point of Interest)
  - At Risk
  - May Be At Risk
  - Sensitive
  - Species at risk
  - Species of conservation concern
  - Deer wintering
  - Migratory bird
  - Other significant habitat
  - Water
- 2 10 2 4 6 8 10 12 14 16 18 Km

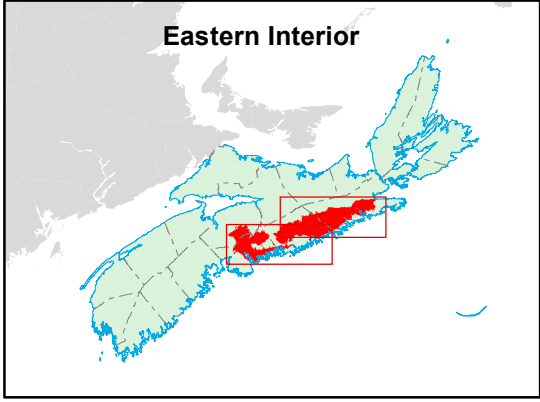
## Map Notes

Base data derived from the Nova Scotia Topographic Database (NSTDB). Copyright Province of Nova Scotia. All rights reserved. Service Nova Scotia & Municipal Relations, Nova Scotia Geomatics Centre, 160 Willow St., Amherst, Nova Scotia. Species status and locations data from Atlantic Canada Conservation Data Centre.

Additional information derived from Nova Scotia Department of Natural Resources, Geographic Information Systems (GIS) databases.

## Disclaimer

The information on this map may have come from a variety of government and non-government sources and is subject to change without notice. The Nova Scotia Department of Natural Resources accepts no liability for any errors, deficiencies, or faultson this map.

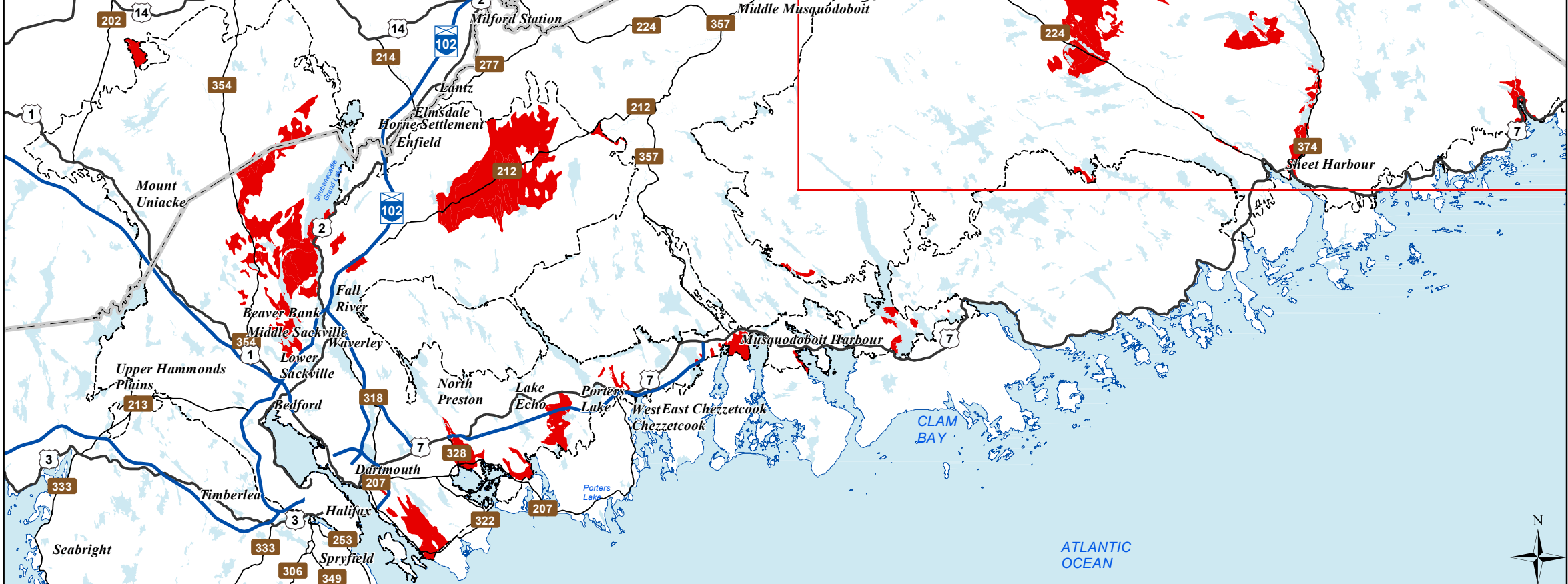


Date: 6/26/2015

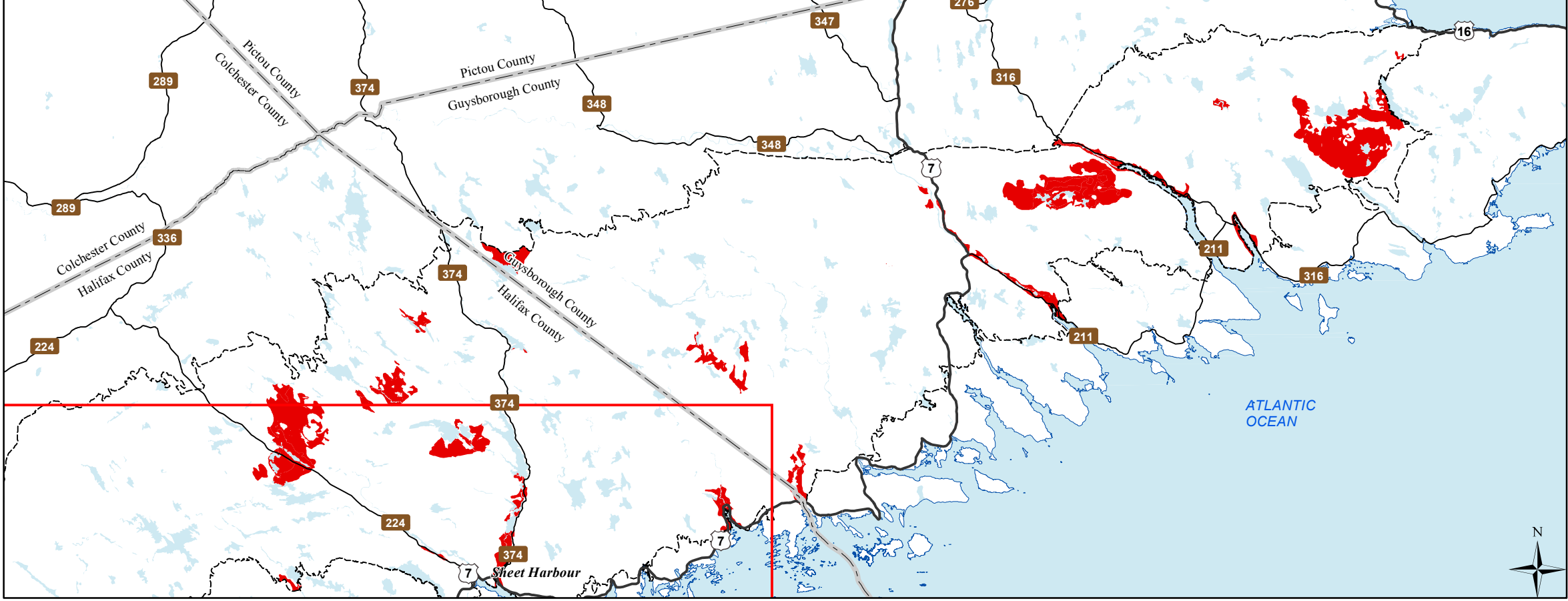




West

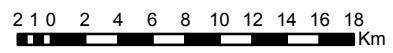


East



**Ecological Landscape Analysis**  
**Map 7**  
**Rare Ecosections**  
Eastern Interior - Ecodistrict 440

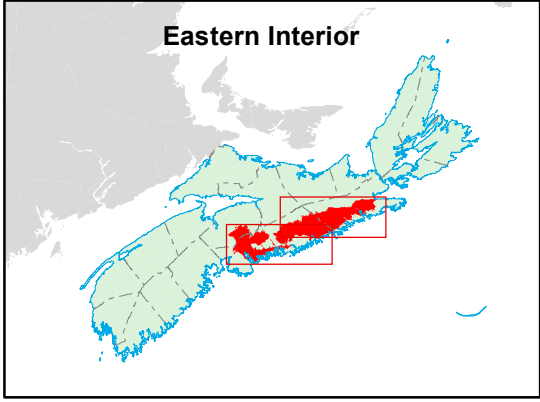
- Legend**
- Ecodistrict Boundary
  - Rare Ecosections
  - Water



**Map Notes**  
Base data derived from the Nova Scotia Topographic Database (NSTDB). Copyright Province of Nova Scotia. All rights reserved. Service Nova Scotia & Municipal Relations, Nova Scotia Geomatics Centre, 160 Willow St., Amherst, Nova Scotia. Species status and locations data from Atlantic Canada Conservation Data Centre.

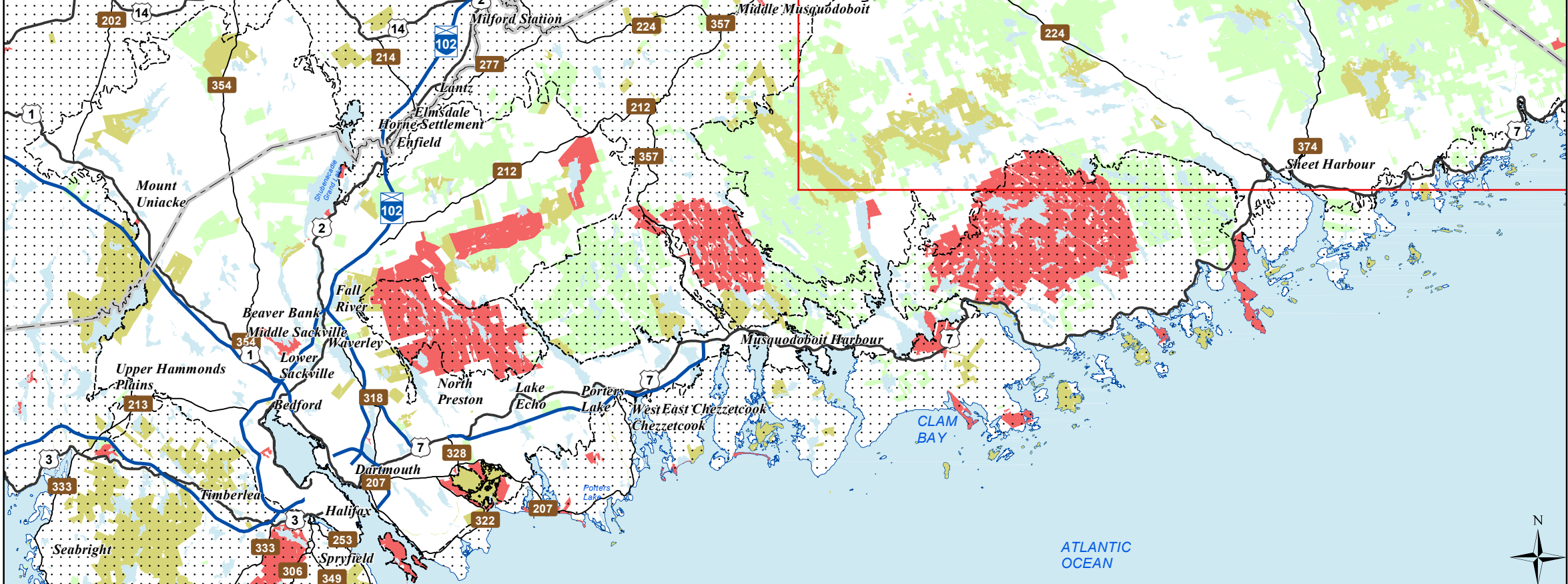
Additional information derived from Nova Scotia Department of Natural Resources, Geographic Information Systems (GIS) databases.

**Disclaimer**  
The information on this map may have come from a variety of government and non-government sources and is subject to change without notice. The Nova Scotia Department of Natural Resources accepts no liability for any errors, deficiencies, or faults on this map.

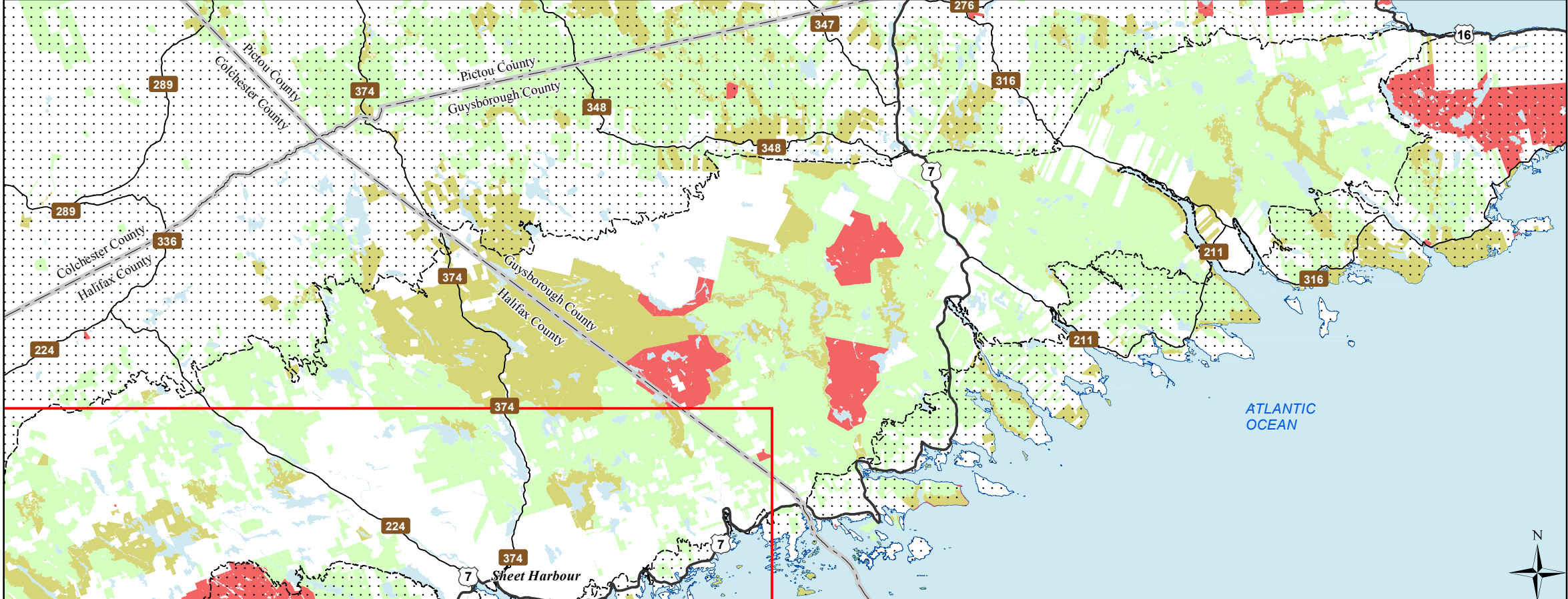




West



East



# Ecological Landscape Analysis

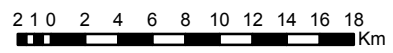
## Map 8

### IRM Classes

Eastern Interior - Ecodistrict 440

#### Legend

- Ecodistrict Boundary
- C1 - General Resource Use
- C2 - Multiple and Adaptive Resource Use
- C3 - Protected and Limited Use
- Water



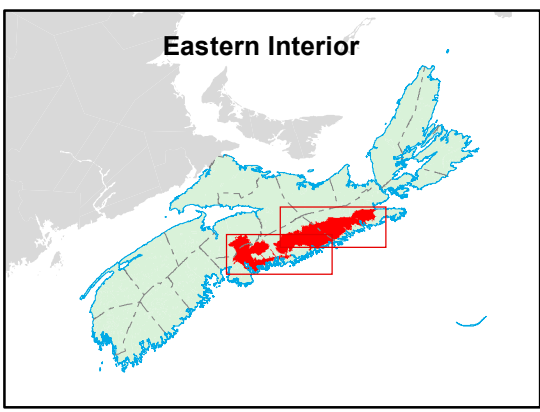
#### Map Notes

Base data derived from the Nova Scotia Topographic Database (NSTDB). Copyright Province of Nova Scotia. All rights reserved. Service Nova Scotia & Municipal Relations, Nova Scotia Geomatics Centre, 160 Willow St., Amherst, Nova Scotia. Species status and locations data from Atlantic Canada Conservation Data Centre.

Additional information derived from Nova Scotia Department of Natural Resources, Geographic Information Systems (GIS) databases.

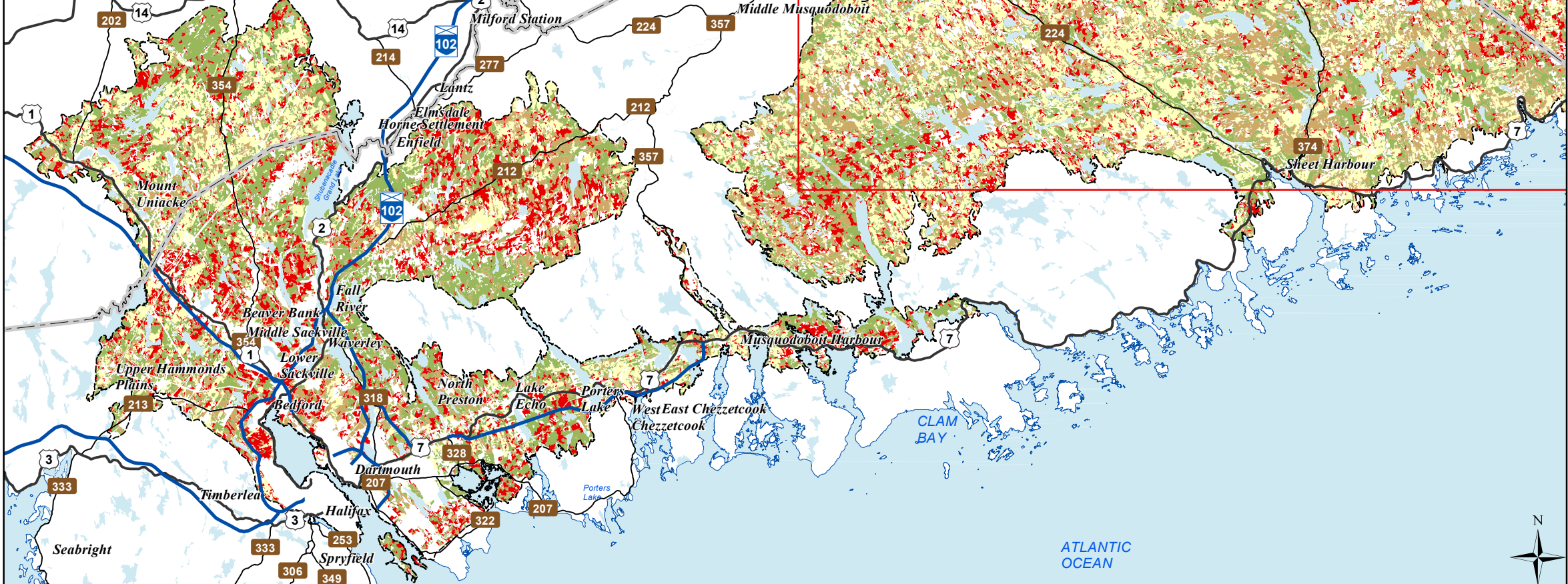
#### Disclaimer

The information on this map may have come from a variety of government and non-government sources and is subject to change without notice. The Nova Scotia Department of Natural Resources accepts no liability for any errors, deficiencies, or faults on this map.





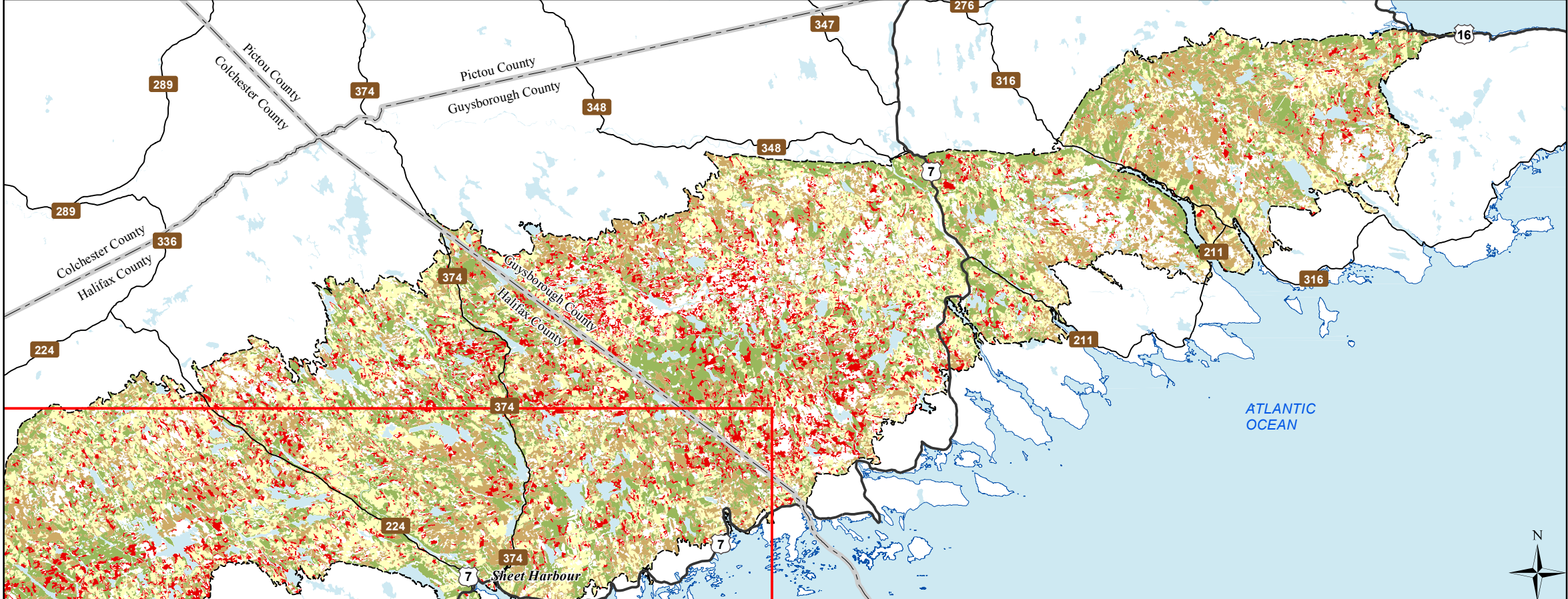
West



**Ecological Landscape Analysis**  
**Map 9**  
**Development Classes**  
Eastern Interior - Ecodistrict 440

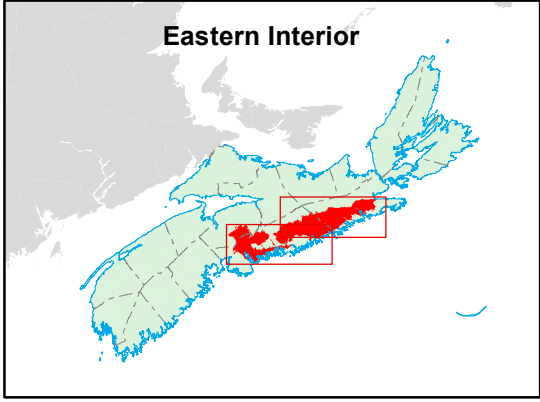
- Legend**
- Ecodistrict Boundary
  - Not forested
  - Establishment
  - Young Forest
  - Mature Timber
  - Multi-Aged / Old Forest
  - Water

East



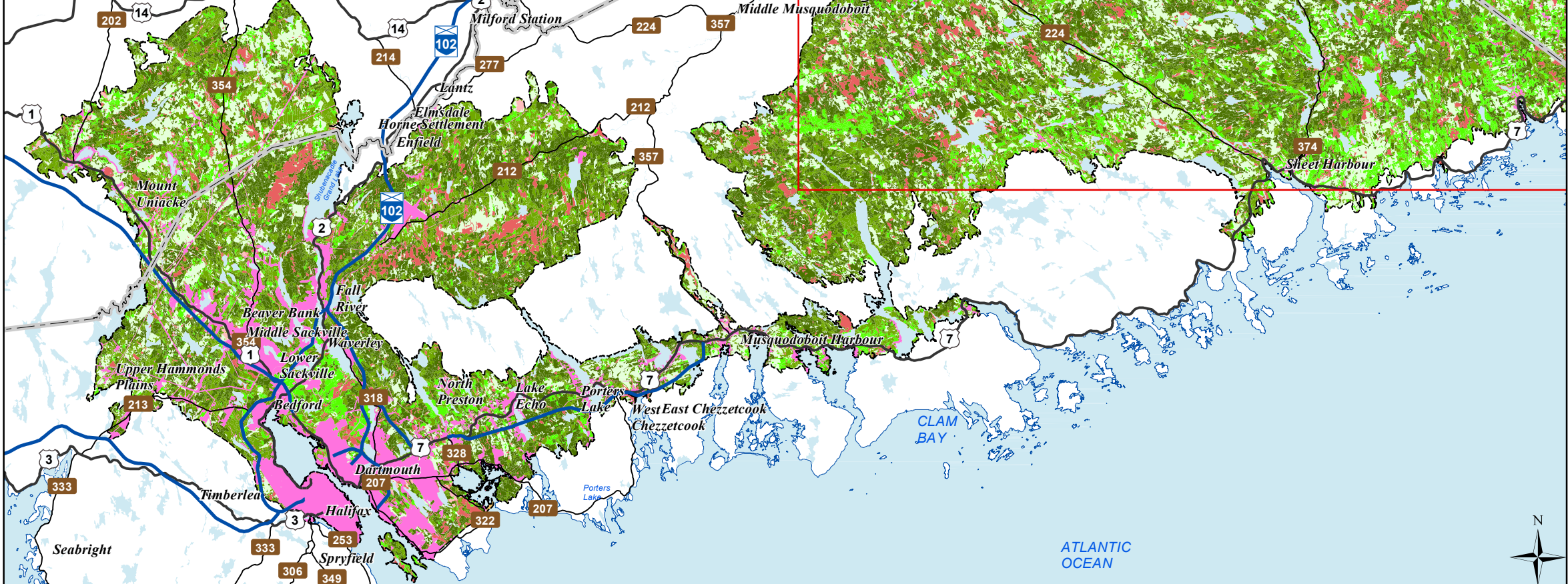
**Map Notes**  
Base data derived from the Nova Scotia Topographic Database (NSTDB). Copyright Province of Nova Scotia. All rights reserved. Service Nova Scotia & Municipal Relations, Nova Scotia Geomatics Centre, 160 Willow St., Amherst, Nova Scotia. Species status and locations data from Atlantic Canada Conservation Data Centre.  
Additional information derived from Nova Scotia Department of Natural Resources, Geographic Information Systems (GIS) databases.

**Disclaimer**  
The information on this map may have come from a variety of government and non-government sources and is subject to change without notice. The Nova Scotia Department of Natural Resources accepts no liability for any errors, deficiencies, or faults on this map.

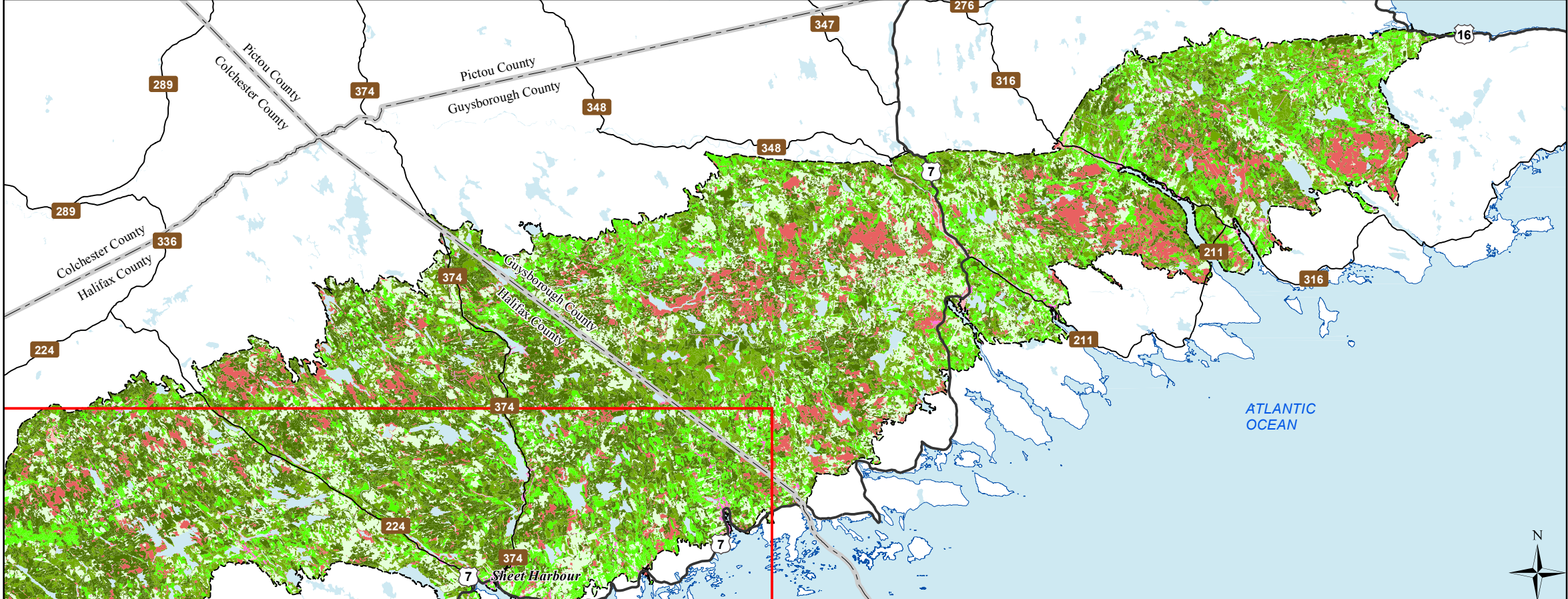




West



East



# Ecological Landscape Analysis

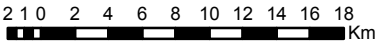
## Map 10

### Seral Stages

Eastern Interior - Ecodistrict 440

#### Legend

- Ecodistrict Boundary
- Ecological Land Cover**
  - Agriculture and Developed Vegetation
  - Shrublands and Herbaceous Vegetation
  - Sparse Vegetation and Naturally Unvegetated
  - Urban/Industrial Vegetation and Unvegetated
- Seral Stage**
  - Unclassified (e.g. recent cut)
  - Early
  - Mid
  - Late
  - Water



#### Map Notes

Base data derived from the Nova Scotia Topographic Database (NSTDB). Copyright Province of Nova Scotia. All rights reserved. Service Nova Scotia & Municipal Relations, Nova Scotia Geomatics Centre, 160 Willow St., Amherst, Nova Scotia. Species status and locations data from Atlantic Canada Conservation Data Centre.

Additional information derived from Nova Scotia Department of Natural Resources, Geographic Information Systems (GIS) databases.

#### Disclaimer

The information on this map may have come from a variety of government and non-government sources and is subject to change without notice. The Nova Scotia Department of Natural Resources accepts no liability for any errors, deficiencies, or faults on this map.

