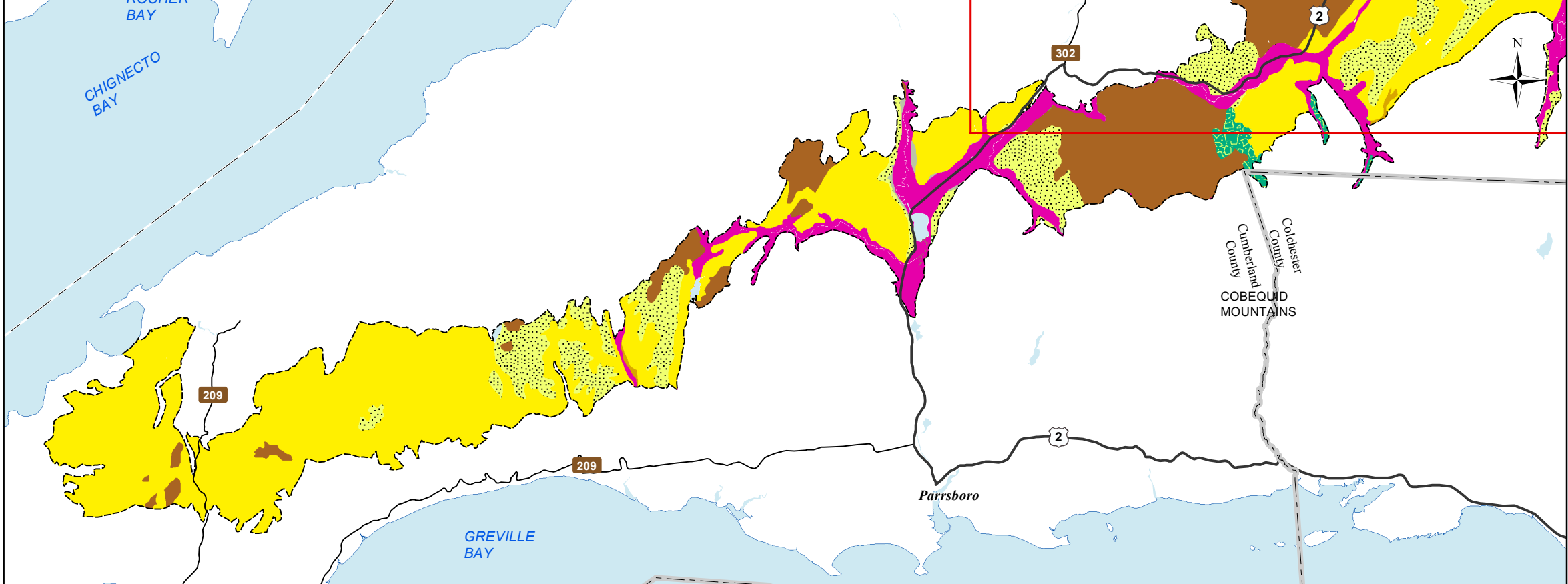
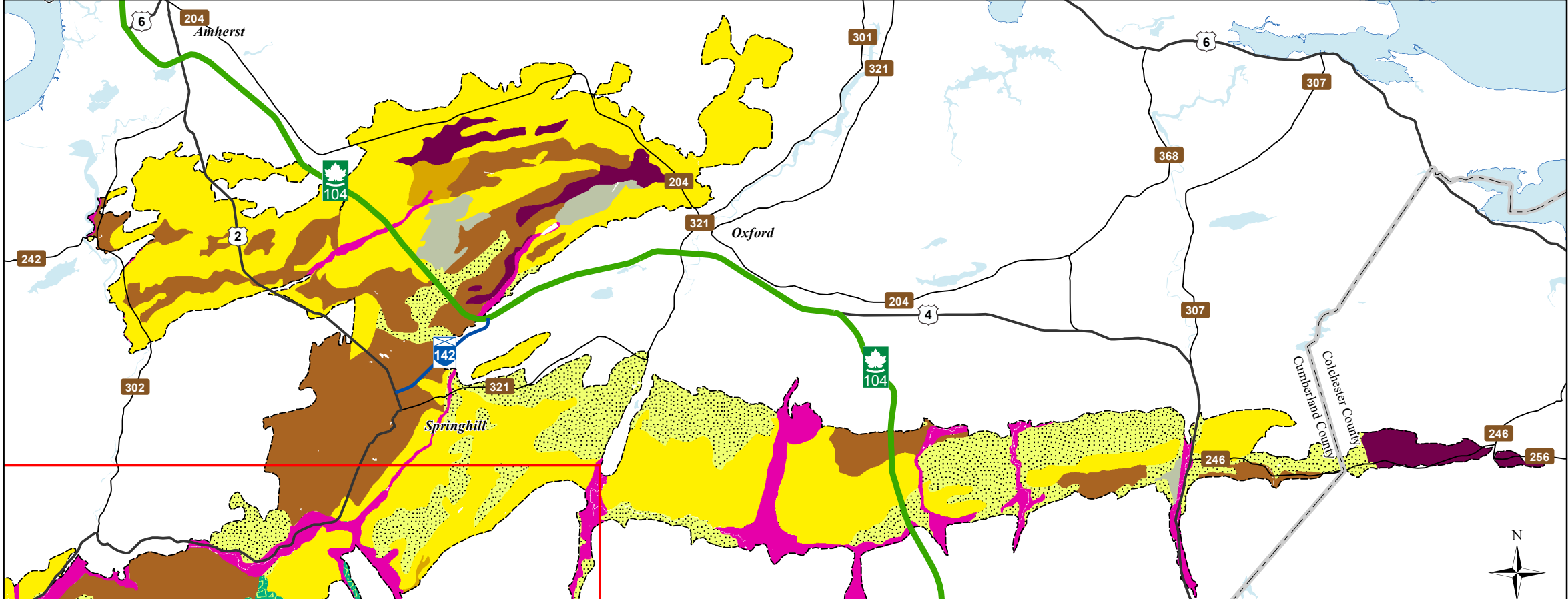


West



East

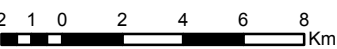


Ecological Landscape Analysis Map A Elements

Cumberland Hills - Ecodistrict 540

Legend

- Ecodistrict Boundary
- Valley Corridors
- Floodplain
- Red Spruce Hummocks
- Spruce Hemlock Pine Hummocks and Hills
- Spruce Pine Flats
- Spruce Pine Hummocks
- Tolerant Mixedwood Hills
- Tolerant Mixedwood Hummocks
- Water



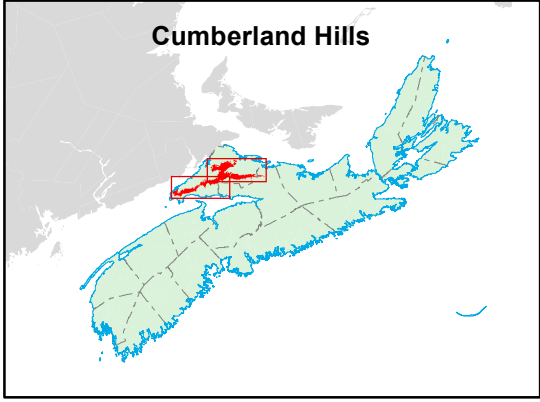
Map Notes

Base data derived from the Nova Scotia Topographic Database (NSTDB). Copyright Province of Nova Scotia. All rights reserved. Service Nova Scotia & Municipal Relations, Nova Scotia Geomatics Centre, 160 Willow St., Amherst, Nova Scotia. Species status and locations data from Atlantic Canada Conservation Data Centre.

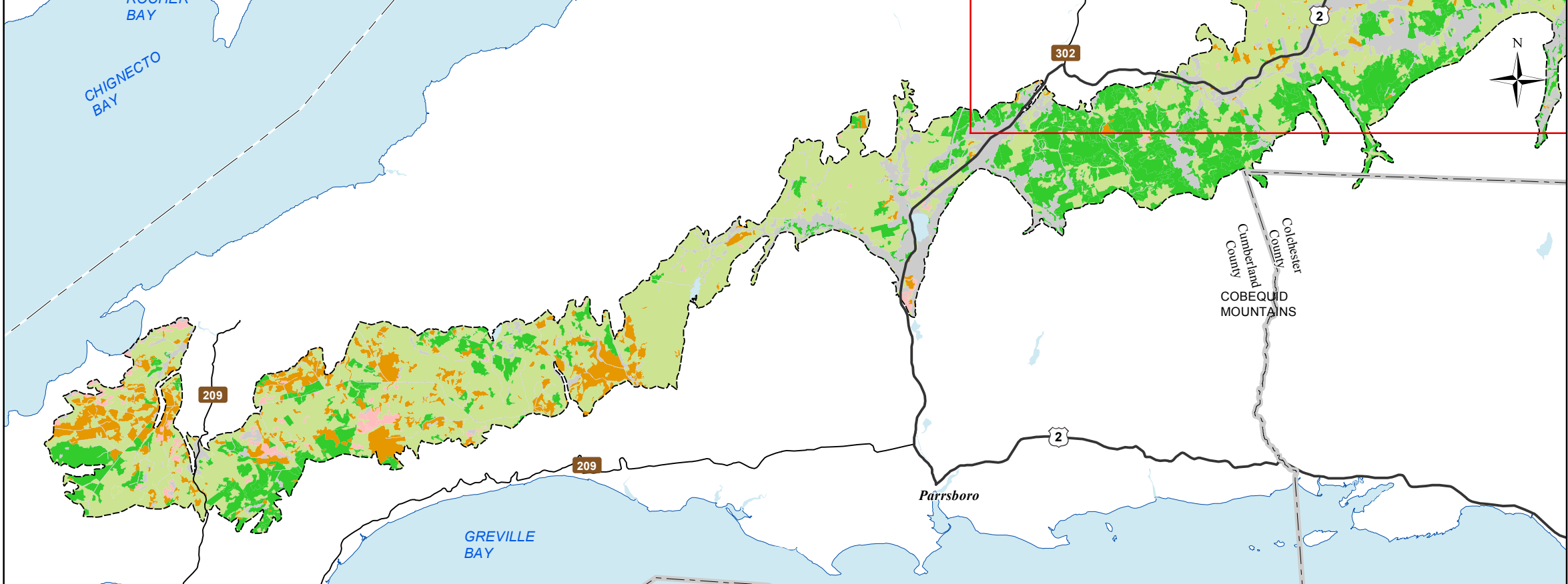
Additional information derived from Nova Scotia Department of Natural Resources, Geographic Information Systems (GIS) databases.

Disclaimer

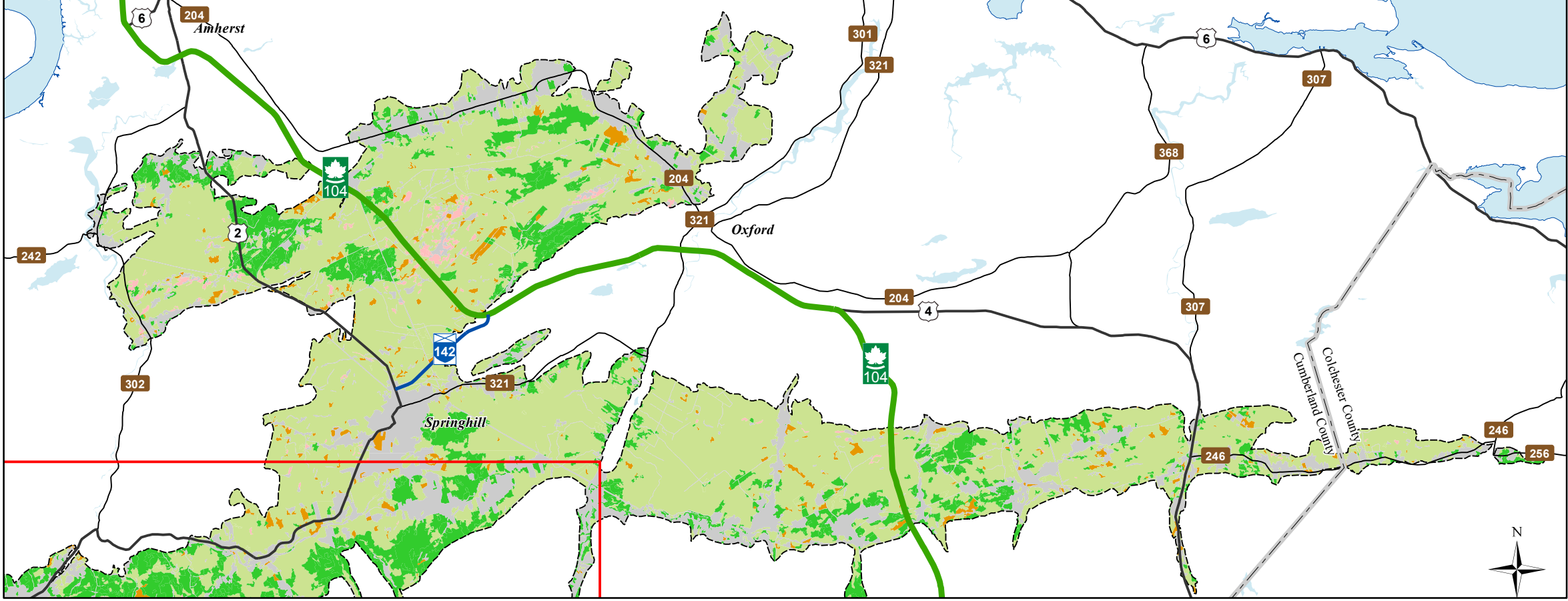
The information on this map may have come from a variety of government and non-government sources and is subject to change without notice. The Nova Scotia Department of Natural Resources accepts no liability for any errors, deficiencies, or faults on this map.



West



East



Date: 6/26/2015

Ecological Landscape Analysis

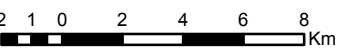
Map 1

Land Capability

Cumberland Hills - Ecodistrict 540

Legend

- Ecodistrict Boundary
- 0 (No capability/converted)
- 1 - 3 (Low)
- 4 - (Low - Medium)
- 5 - (Medium)
- 6+ - (High)
- Water



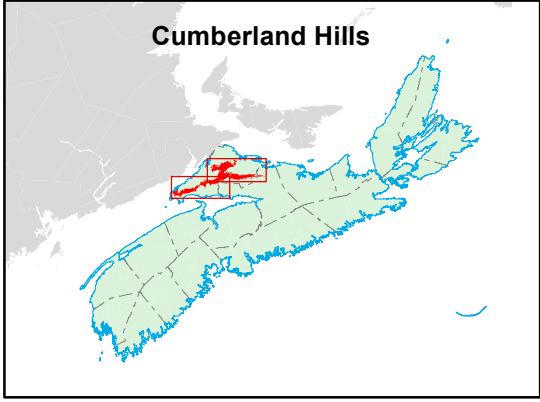
Map Notes

Base data derived from the Nova Scotia Topographic Database (NSTDB). Copyright Province of Nova Scotia. All rights reserved. Service Nova Scotia & Municipal Relations, Nova Scotia Geomatics Centre, 160 Willow St., Amherst, Nova Scotia. Species status and locations data from Atlantic Canada Conservation Data Centre.

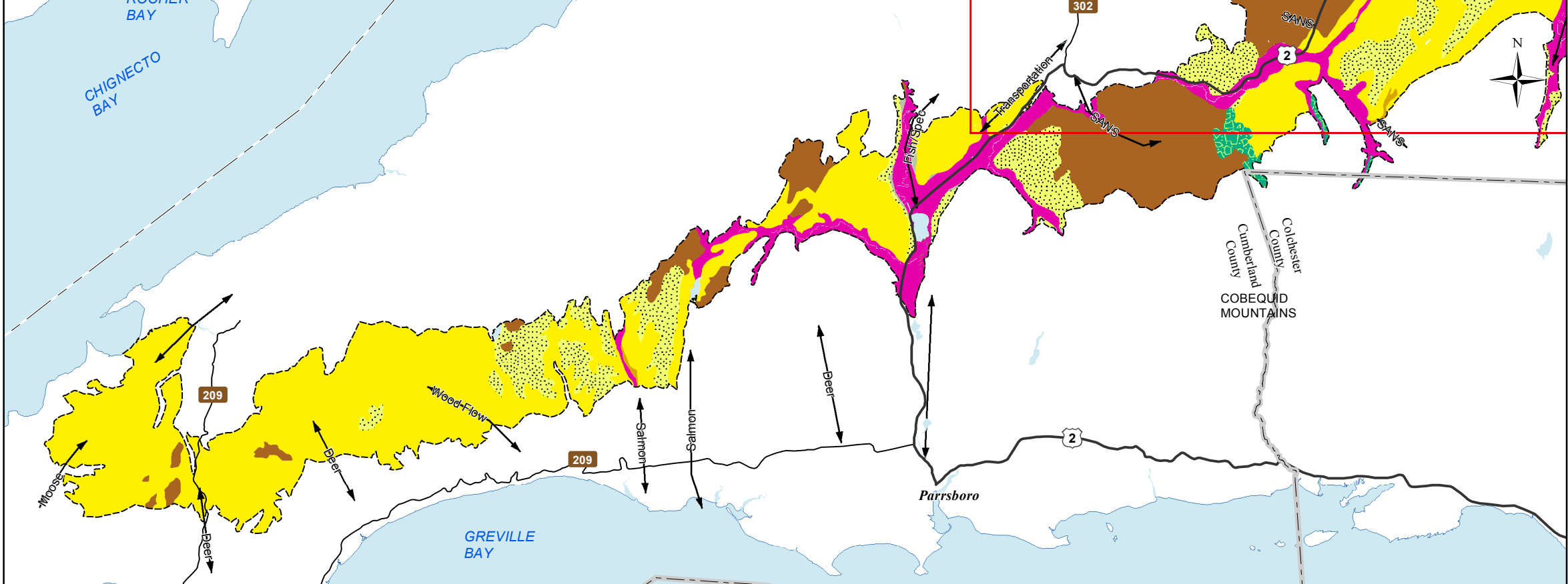
Additional information derived from Nova Scotia Department of Natural Resources, Geographic Information Systems (GIS) databases.

Disclaimer

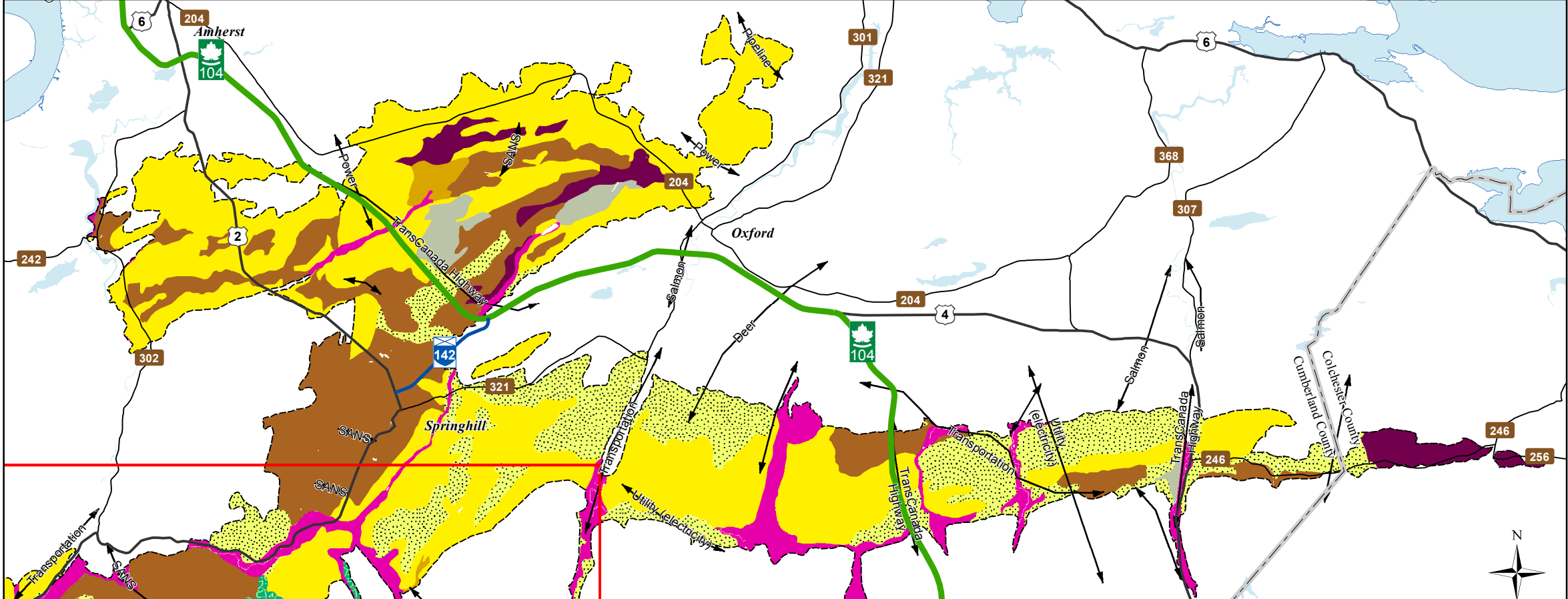
The information on this map may have come from a variety of government and non-government sources and is subject to change without notice. The Nova Scotia Department of Natural Resources accepts no liability for any errors, deficiencies, or faultson this map.



West



East



Ecological Landscape Analysis

Map 2

Elements and Flows

Cumberland Hills - Ecodistrict 540

Legend

- Ecodistrict Boundary
 - Flows
 - Valley Corridors
 - Floodplain
 - Red Spruce Hummocks
 - Spruce Hemlock Pine Hummocks and Hills
 - Spruce Pine Flats
 - Spruce Pine Hummocks
 - Tolerant Mixedwood Hills
 - Tolerant Mixedwood Hummocks
 - Water
- 2 1 0 2 4 6 8 Km

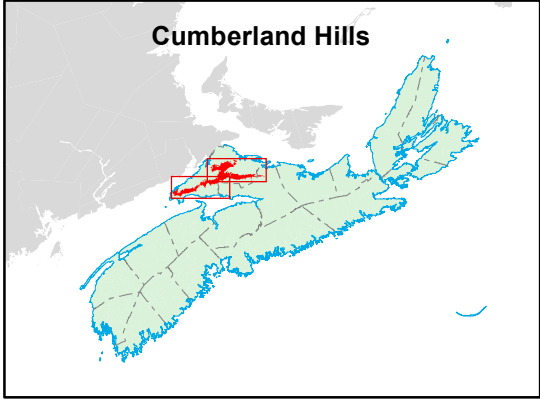
Map Notes

Base data derived from the Nova Scotia Topographic Database (NSTDB). Copyright Province of Nova Scotia. All rights reserved. Service Nova Scotia & Municipal Relations, Nova Scotia Geomatics Centre, 160 Willow St., Amherst, Nova Scotia. Species status and locations data from Atlantic Canada Conservation Data Centre.

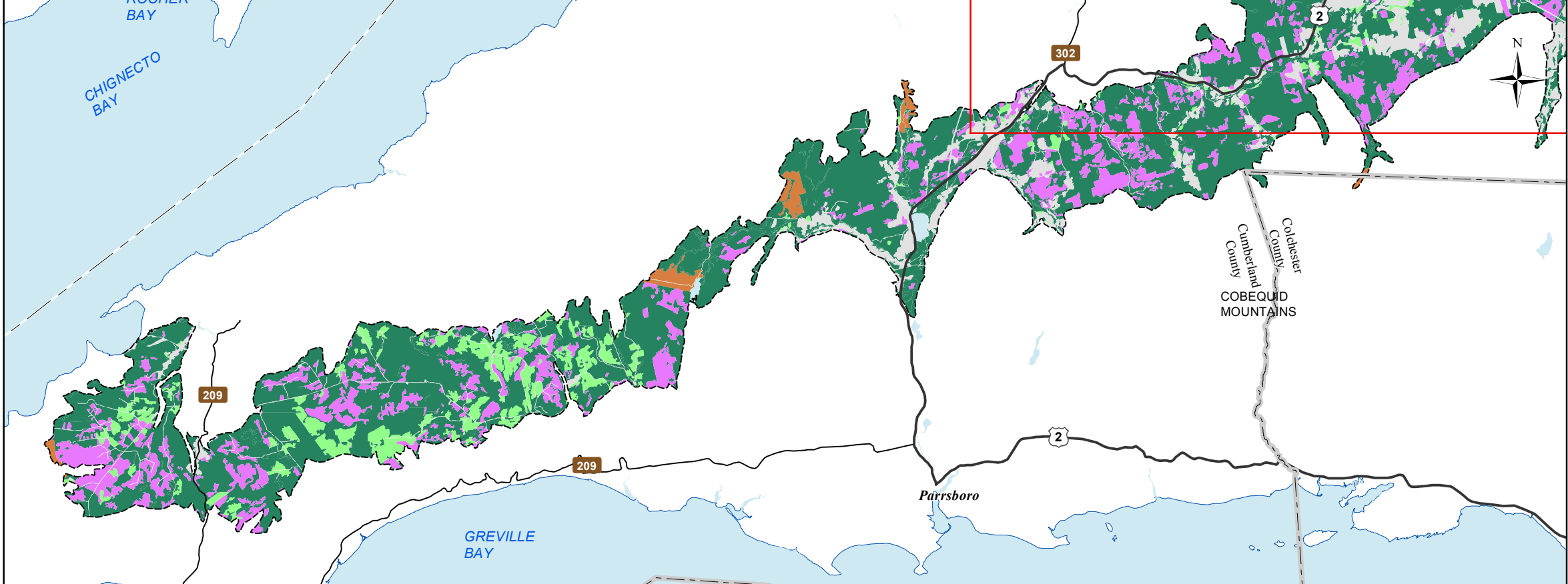
Additional information derived from Nova Scotia Department of Natural Resources, Geographic Information Systems (GIS) databases.

Disclaimer

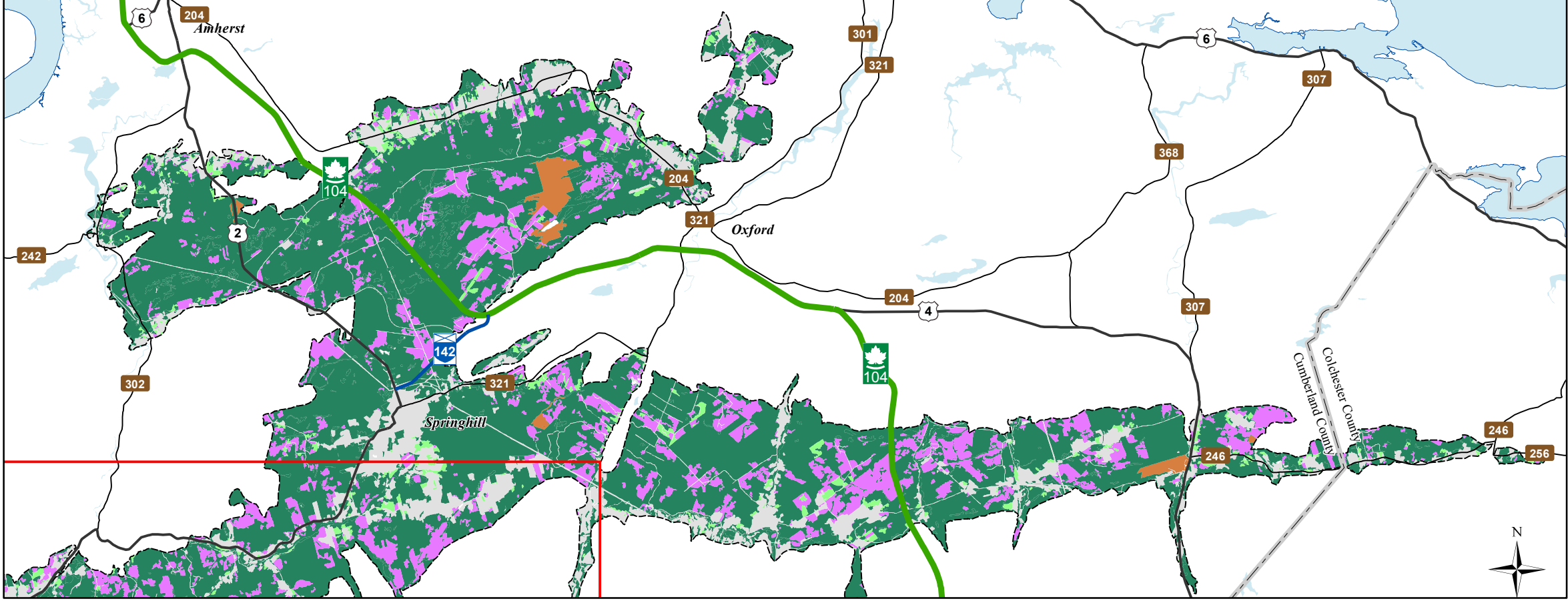
The information on this map may have come from a variety of government and non-government sources and is subject to change without notice. The Nova Scotia Department of Natural Resources accepts no liability for any errors, deficiencies, or faults on this map.



West



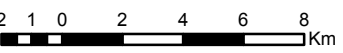
East



Date: 6/26/2015

Ecological Landscape Analysis
Map 3
Ecological Emphasis Classes
Cumberland Hills - Ecodistrict 540

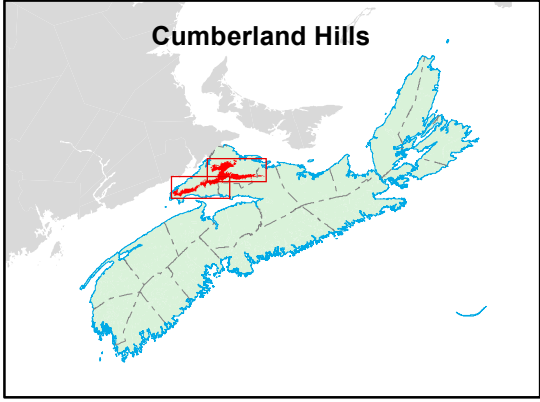
- Legend**
- Ecodistrict Boundary
 - Reserve
 - Extensive
 - Intensive
 - Converted
 - Unclassified
 - Water



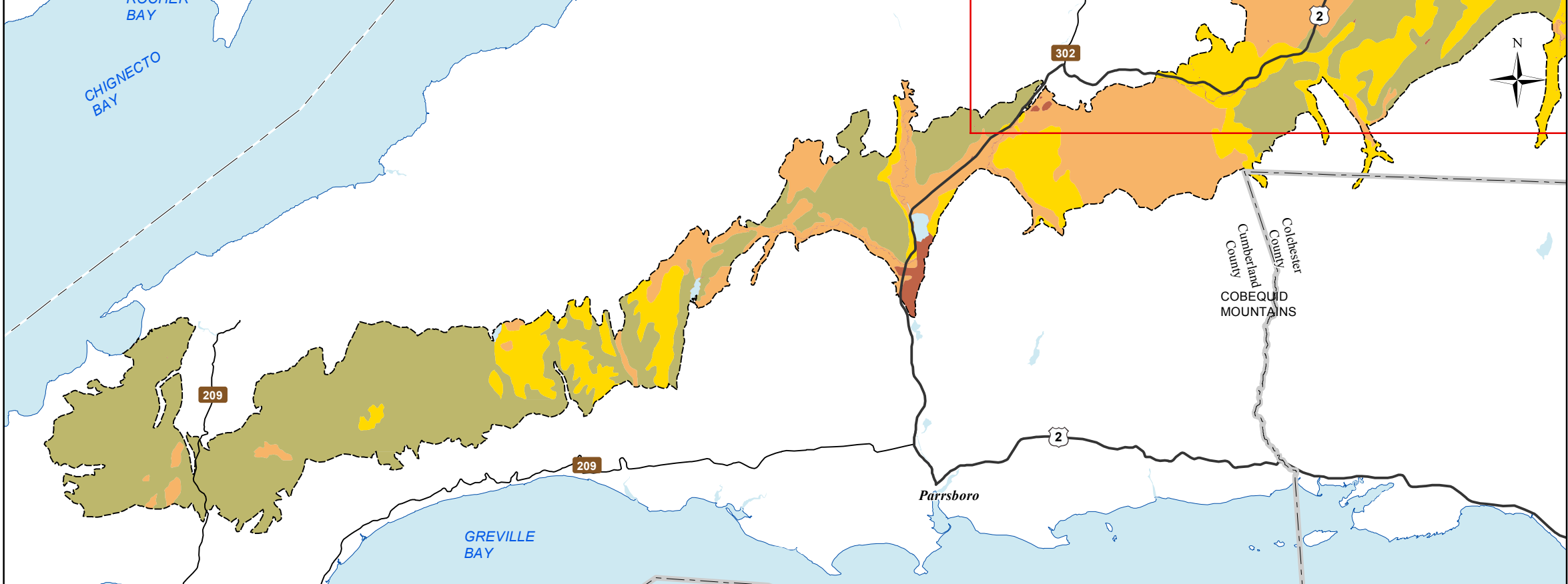
Map Notes
Base data derived from the Nova Scotia Topographic Database (NSTDB). Copyright Province of Nova Scotia. All rights reserved. Service Nova Scotia & Municipal Relations, Nova Scotia Geomatics Centre, 160 Willow St., Amherst, Nova Scotia. Species status and locations data from Atlantic Canada Conservation Data Centre.

Additional information derived from Nova Scotia Department of Natural Resources, Geographic Information Systems (GIS) databases.

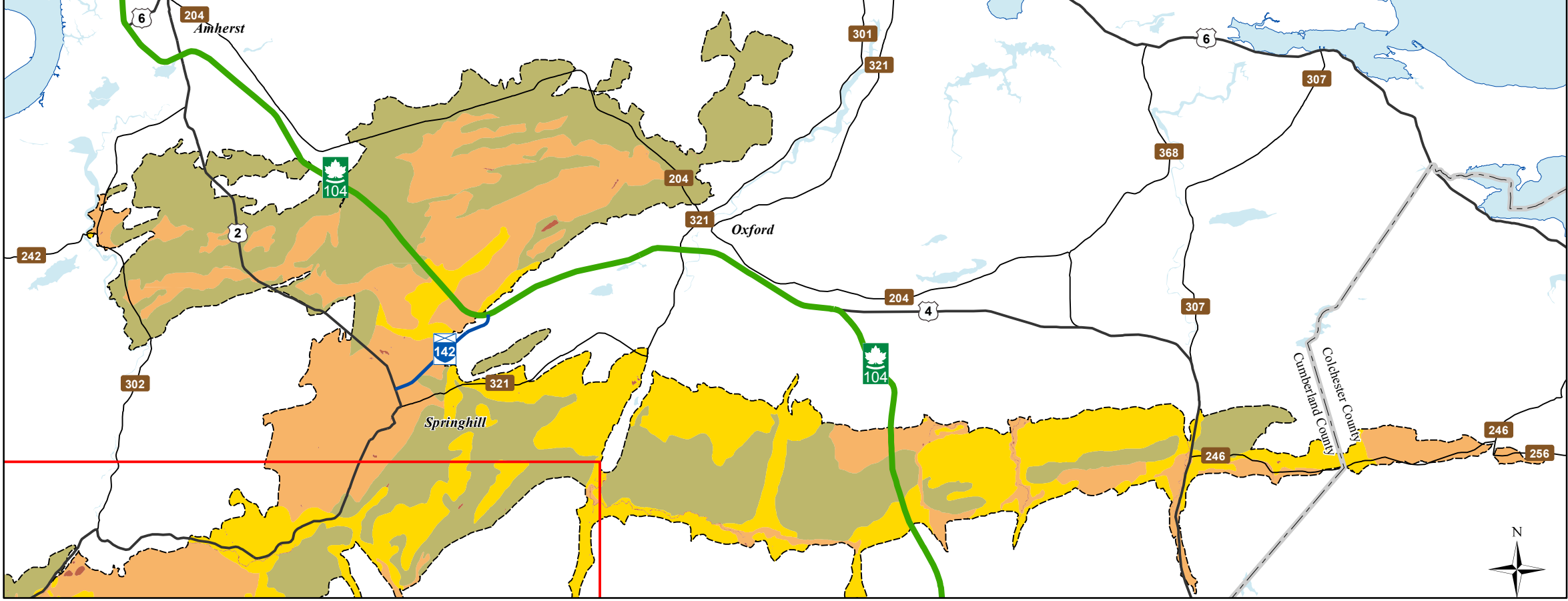
Disclaimer
The information on this map may have come from a variety of government and non-government sources and is subject to change without notice. The Nova Scotia Department of Natural Resources accepts no liability for any errors, deficiencies, or faultson this map.



West

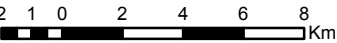


East



Ecological Landscape Analysis
Map 4
Natural Disturbances
Cumberland Hills - Ecodistrict 540

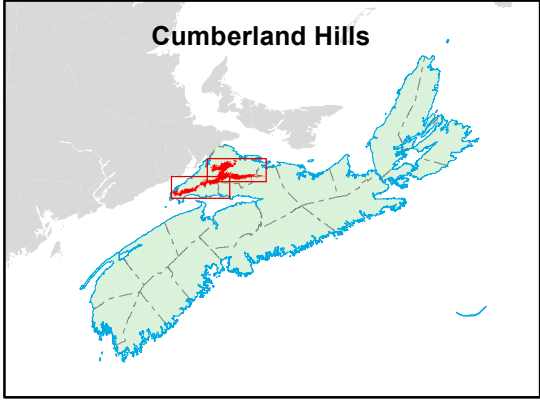
- Legend**
- Ecodistrict Boundary
 - Frequent
 - Gap
 - Infrequent
 - Open Seral
 - Water



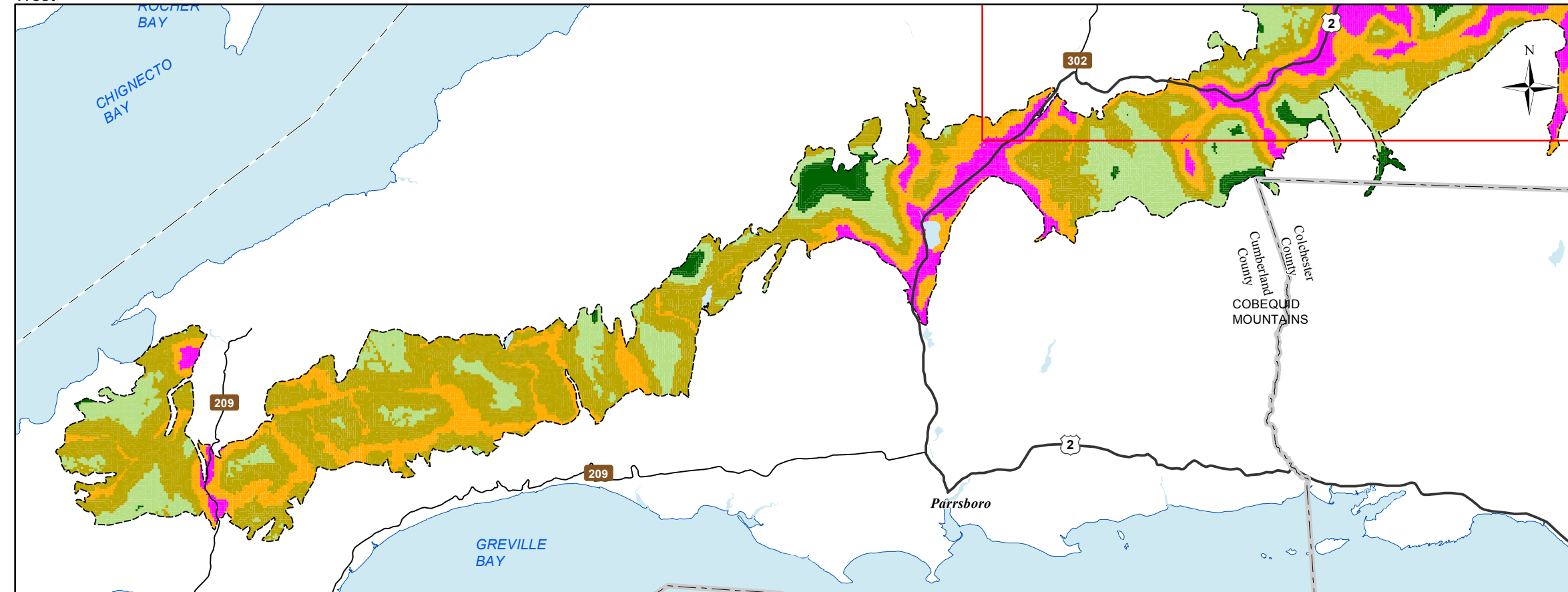
Map Notes
Base data derived from the Nova Scotia Topographic Database (NSTDB). Copyright Province of Nova Scotia. All rights reserved. Service Nova Scotia & Municipal Relations, Nova Scotia Geomatics Centre, 160 Willow St., Amherst, Nova Scotia. Species status and locations data from Atlantic Canada Conservation Data Centre.

Additional information derived from Nova Scotia Department of Natural Resources, Geographic Information Systems (GIS) databases.

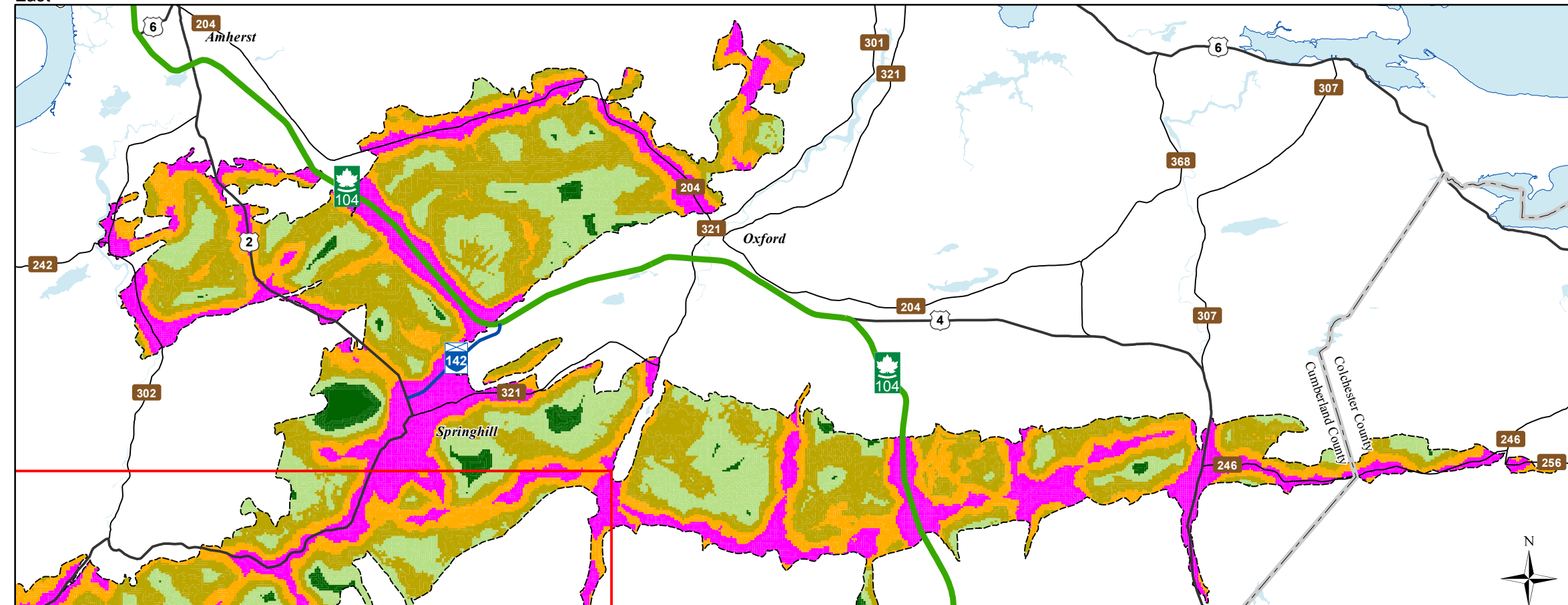
Disclaimer
The information on this map may have come from a variety of government and non-government sources and is subject to change without notice. The Nova Scotia Department of Natural Resources accepts no liability for any errors, deficiencies, or faults on this map.



West



East



Date: 6/26/2015

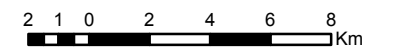
Ecological Landscape Analysis

Map 5 Road Index

Cumberland Hills - Ecodistrict 540

Legend

- Ecodistrict Boundary
- Remote
- Forest Resource
- Mixed Rural
- Agriculture Suburban
- Urban
- Water



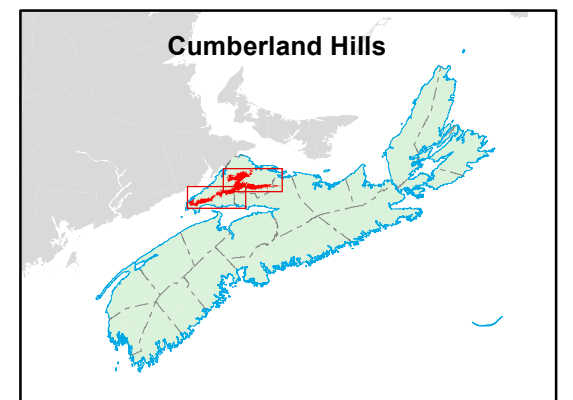
Map Notes

Base data derived from the Nova Scotia Topographic Database (NSTDB). Copyright Province of Nova Scotia. All rights reserved. Service Nova Scotia & Municipal Relations, Nova Scotia Geomatics Centre, 160 Willow St., Amherst, Nova Scotia. Species status and locations data from Atlantic Canada Conservation Data Centre.

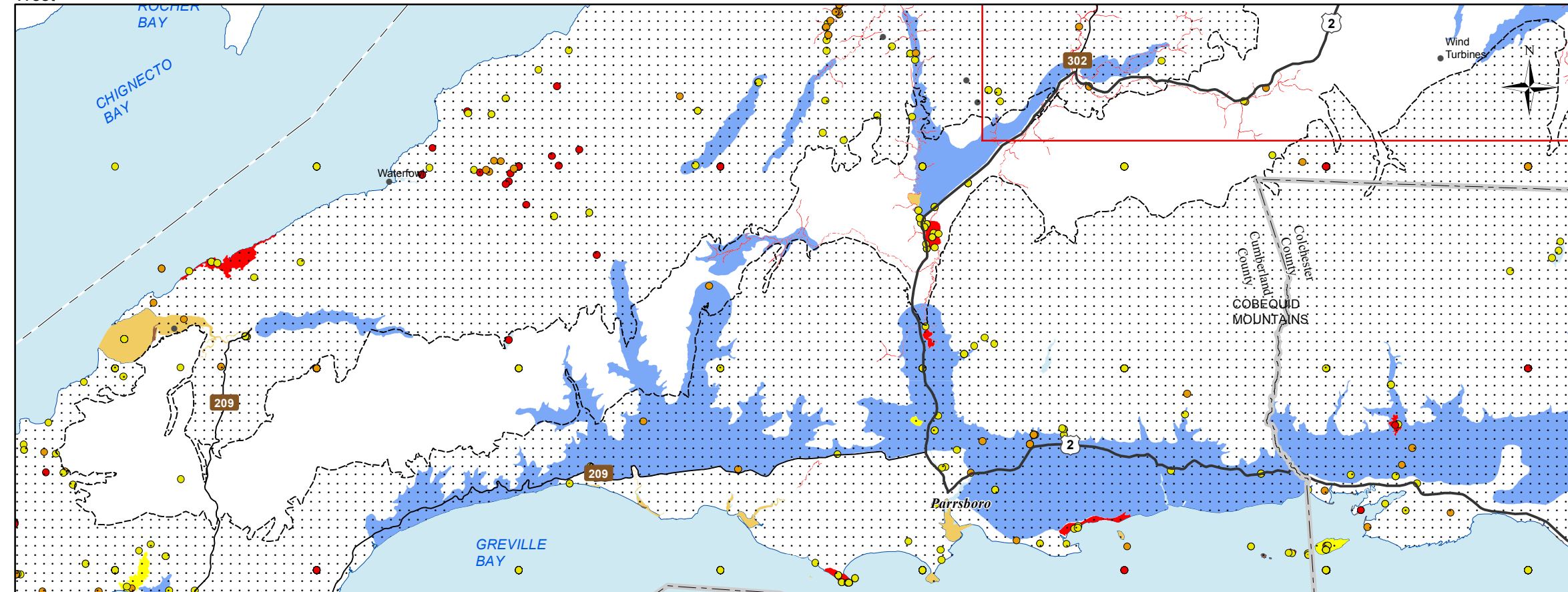
Additional information derived from Nova Scotia Department of Natural Resources, Geographic Information Systems (GIS) databases.

Disclaimer

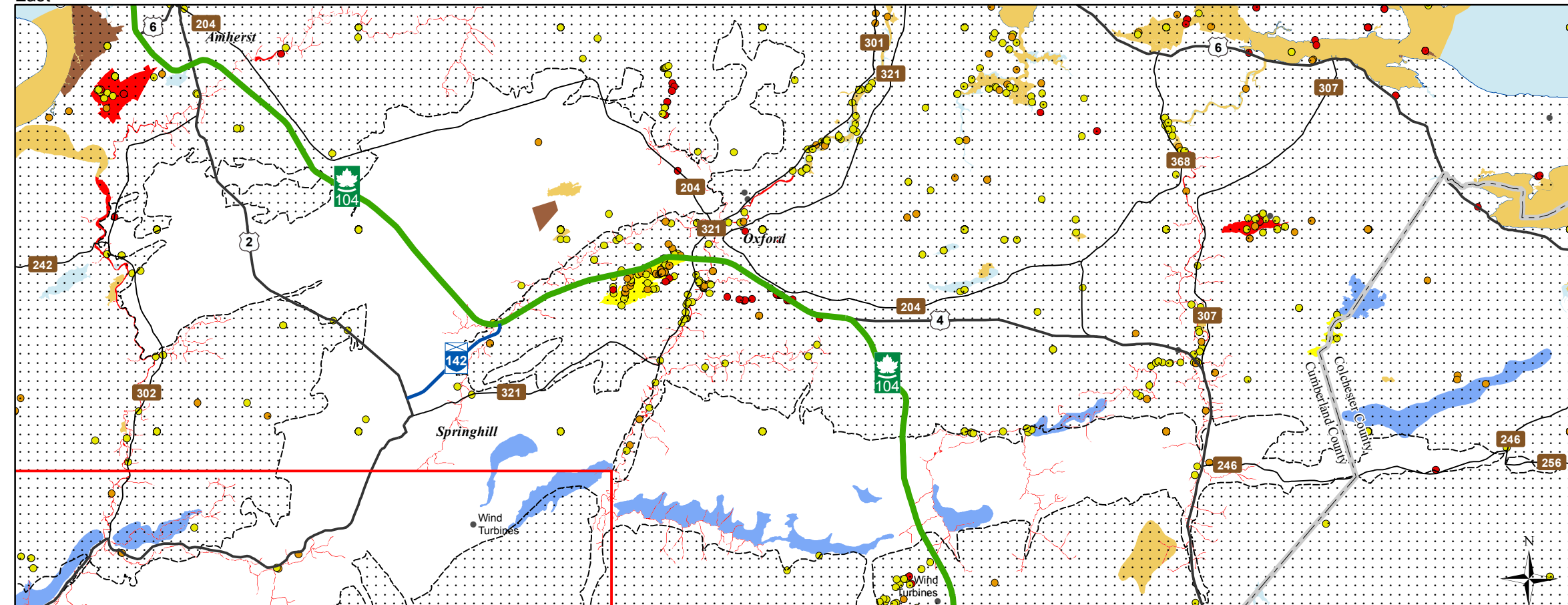
The information on this map may have come from a variety of government and non-government sources and is subject to change without notice. The Nova Scotia Department of Natural Resources accepts no liability for any errors, deficiencies, or faults on this map.



West



East



Date: 6/26/2015

Ecological Landscape Analysis Map 6 Special Occurrences - Species

Cumberland Hills - Ecodistrict 540

Legend

- Ecodistrict Boundary
- Outside Ecodistrict
- Other Occurrences (Point of Interest)
- At Risk
- May Be At Risk
- Sensitive
- Species at risk
- Species of conservation concern
- Deer wintering
- Migratory bird
- Other significant habitat
- Water

2 1 0 2 4 6 8
Km

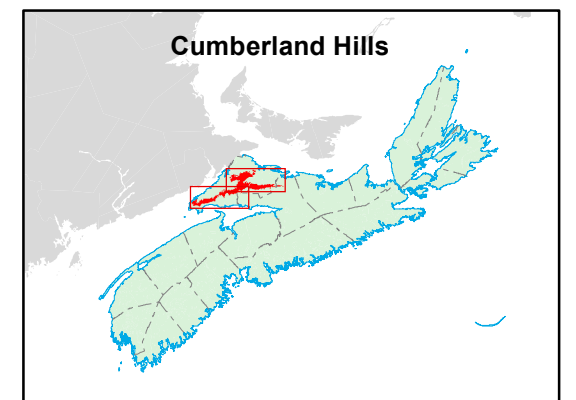
Map Notes

Base data derived from the Nova Scotia Topographic Database (NSTDB). Copyright Province of Nova Scotia. All rights reserved. Service Nova Scotia & Municipal Relations, Nova Scotia Geomatics Centre, 160 Willow St., Amherst, Nova Scotia. Species status and locations data from Atlantic Canada Conservation Data Centre.

Additional information derived from Nova Scotia Department of Natural Resources, Geographic Information Systems (GIS) databases.

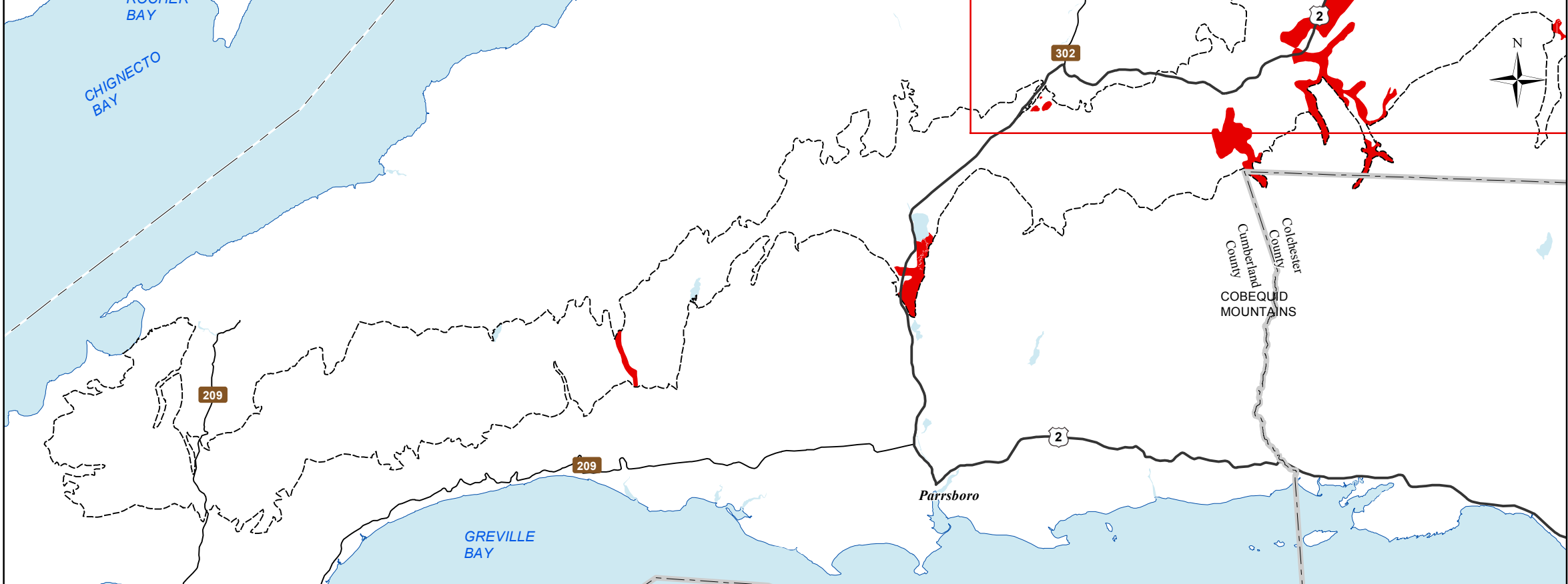
Disclaimer

The information on this map may have come from a variety of government and non-government sources and is subject to change without notice. The Nova Scotia Department of Natural Resources accepts no liability for any errors, deficiencies, or faults on this map.

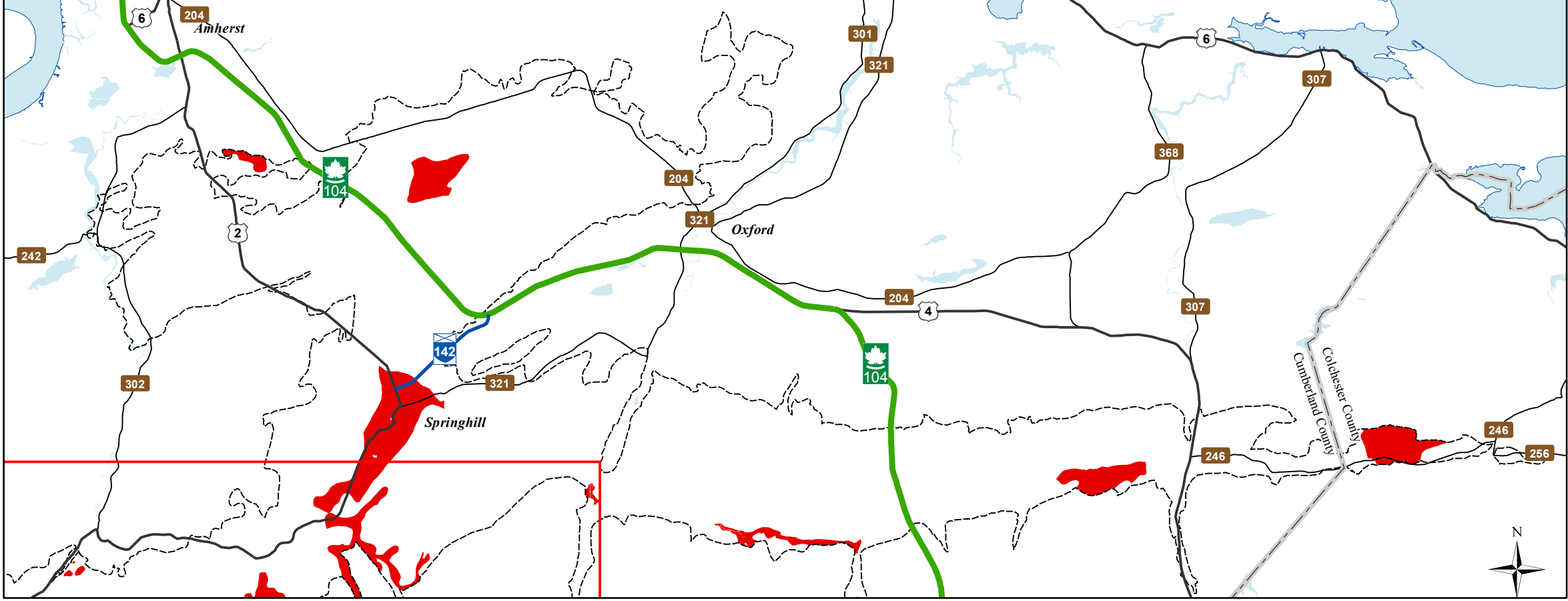


NOVA SCOTIA

West

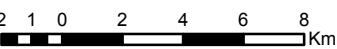


East



Ecological Landscape Analysis
Map 7
Rare Ecosctions
Cumberland Hills - Ecodistrict 540

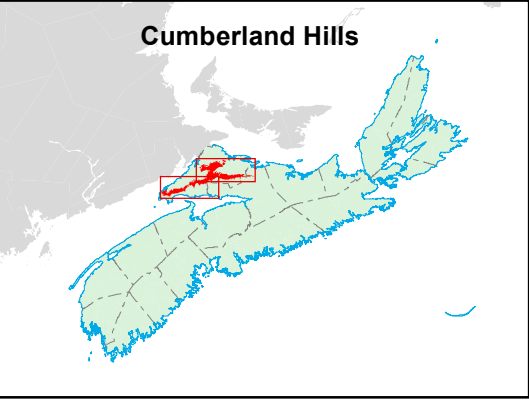
- Legend**
- Ecodistrict Boundary
 - Rare Ecosctions
 - Water



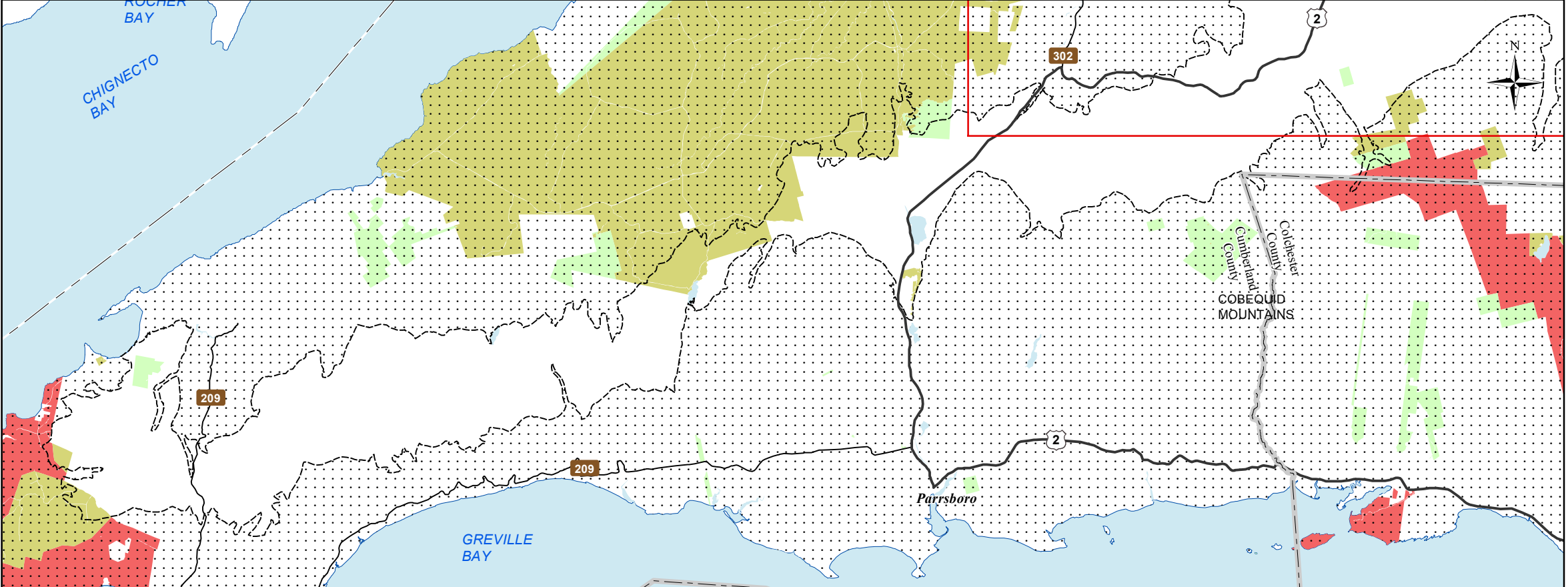
Map Notes
Base data derived from the Nova Scotia Topographic Database (NSTDB). Copyright Province of Nova Scotia. All rights reserved. Service Nova Scotia & Municipal Relations, Nova Scotia Geomatics Centre, 160 Willow St., Amherst, Nova Scotia. Species status and locations data from Atlantic Canada Conservation Data Centre.

Additional information derived from Nova Scotia Department of Natural Resources, Geographic Information Systems (GIS) databases.

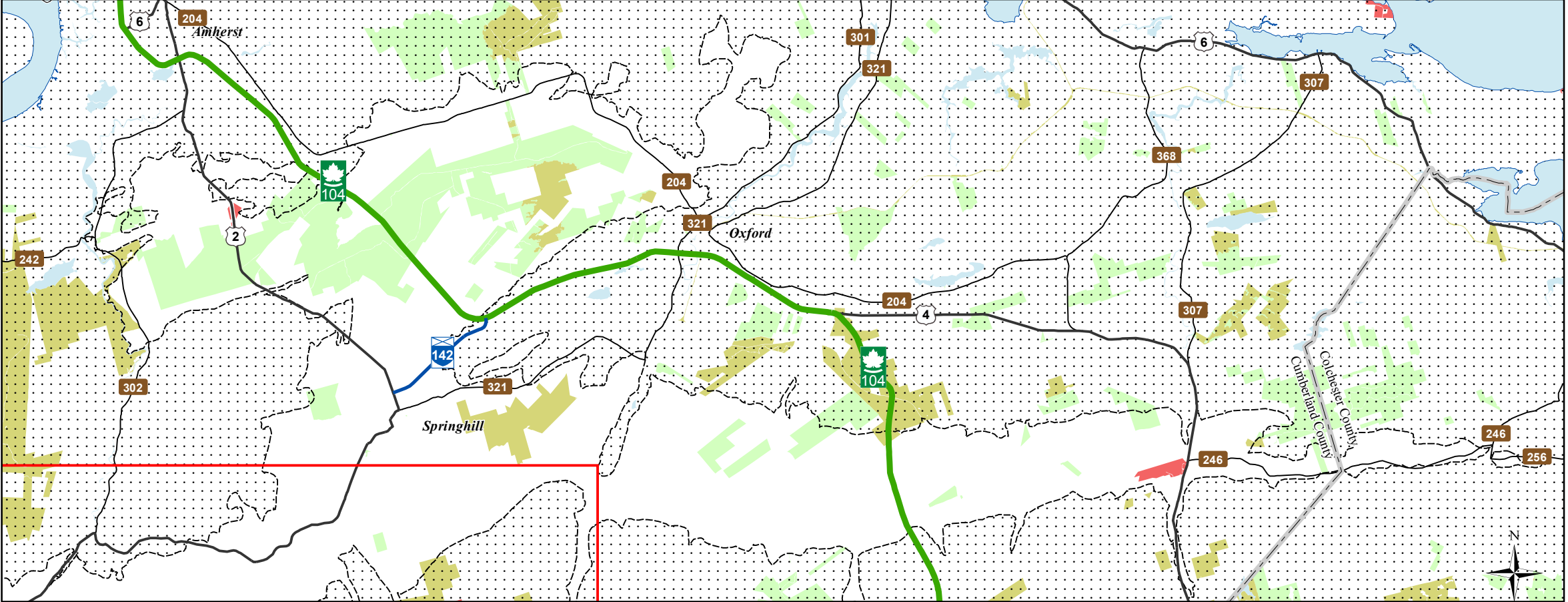
Disclaimer
The information on this map may have come from a variety of government and non-government sources and is subject to change without notice. The Nova Scotia Department of Natural Resources accepts no liability for any errors, deficiencies, or faultson this map.



West



East



Ecological Landscape Analysis

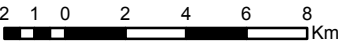
Map 8

IRM Classes

Cumberland Hills - Ecodistrict 540

Legend

- Ecodistrict Boundary
- C1 - General Resource Use
- C2 - Multiple and Adaptive Resource Use
- C3 - Protected and Limited Use
- Water



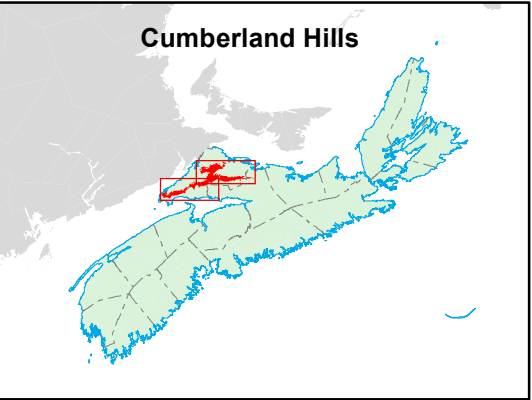
Map Notes

Base data derived from the Nova Scotia Topographic Database (NSTDB). Copyright Province of Nova Scotia. All rights reserved. Service Nova Scotia & Municipal Relations, Nova Scotia Geomatics Centre, 160 Willow St., Amherst, Nova Scotia. Species status and locations data from Atlantic Canada Conservation Data Centre.

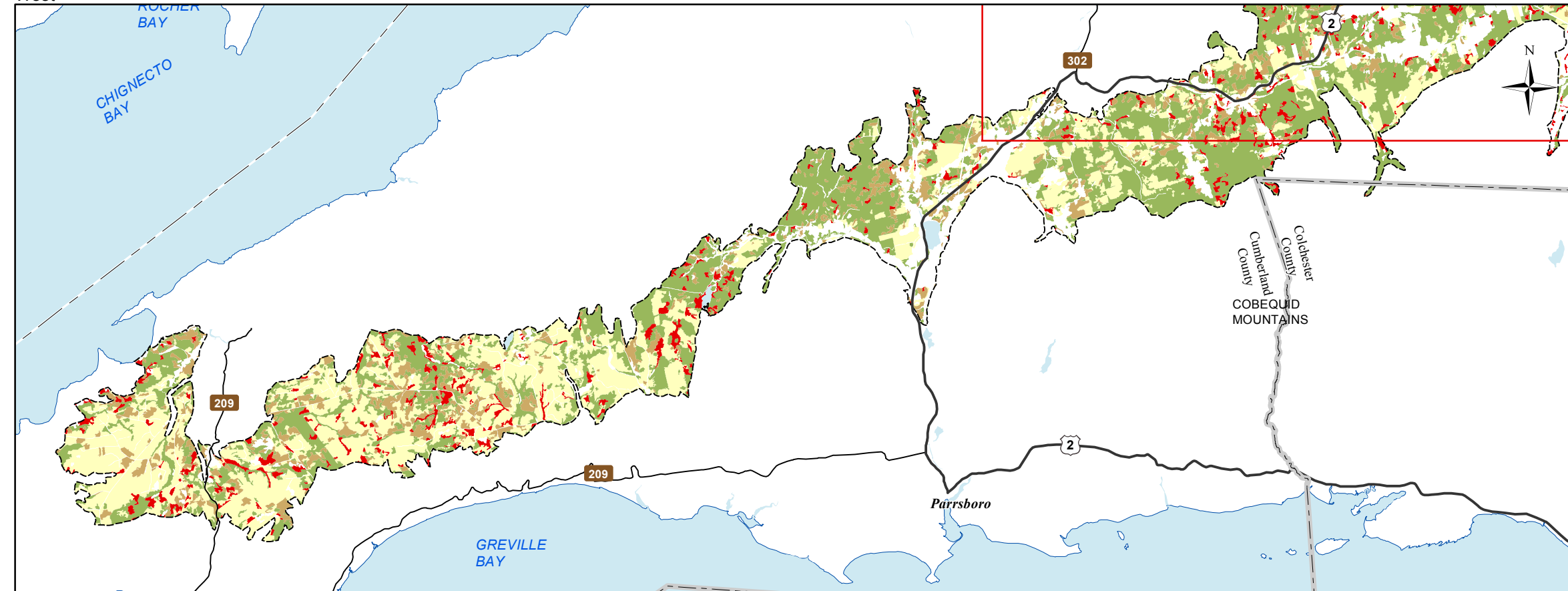
Additional information derived from Nova Scotia Department of Natural Resources, Geographic Information Systems (GIS) databases.

Disclaimer

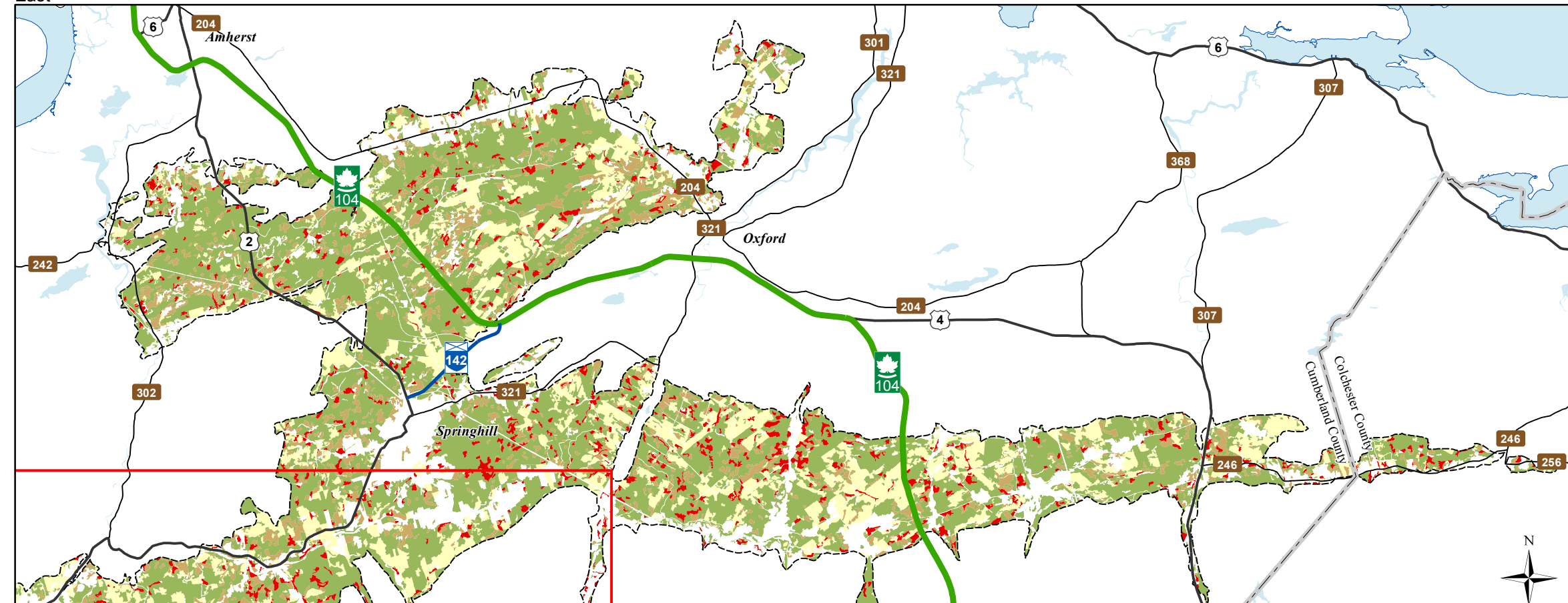
The information on this map may have come from a variety of government and non-government sources and is subject to change without notice. The Nova Scotia Department of Natural Resources accepts no liability for any errors, deficiencies, or faults on this map.



West



East



Date: 6/26/2015

Ecological Landscape Analysis

Map 9

Development Classes

Cumberland Hills - Ecodistrict 540

Legend

- Ecodistrict Boundary
- Not forested
- Establishment
- Young Forest
- Mature Timber
- Multi-Aged / Old Forest
- Water

2 1 0 2 4 6 8 Km

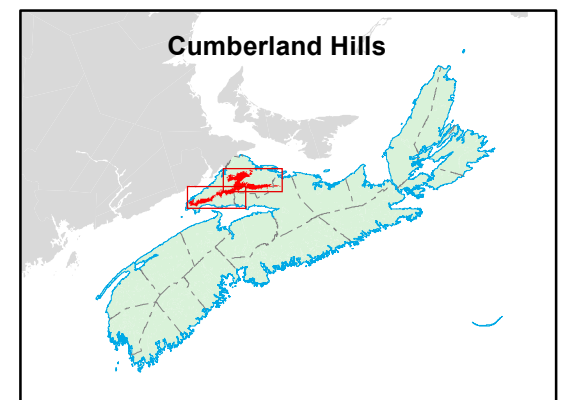
Map Notes

Base data derived from the Nova Scotia Topographic Database (NSTDB). Copyright Province of Nova Scotia. All rights reserved. Service Nova Scotia & Municipal Relations, Nova Scotia Geomatics Centre, 160 Willow St., Amherst, Nova Scotia. Species status and locations data from Atlantic Canada Conservation Data Centre.

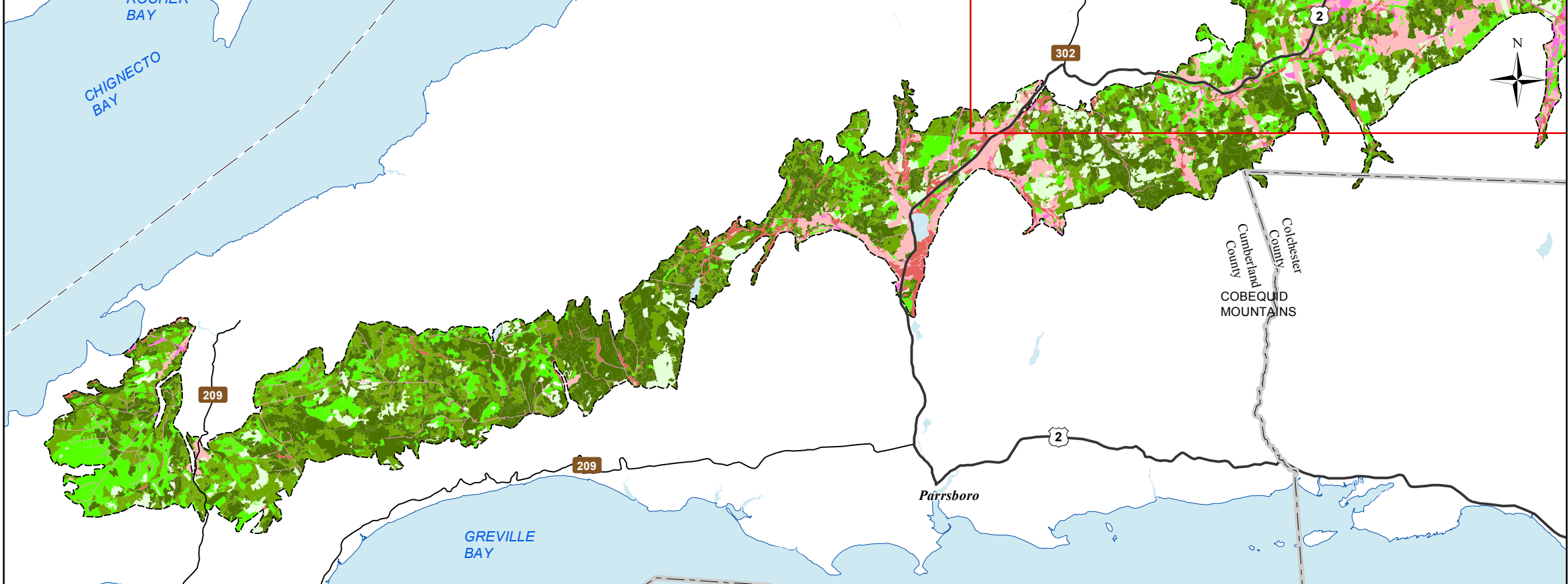
Additional information derived from Nova Scotia Department of Natural Resources, Geographic Information Systems (GIS) databases.

Disclaimer

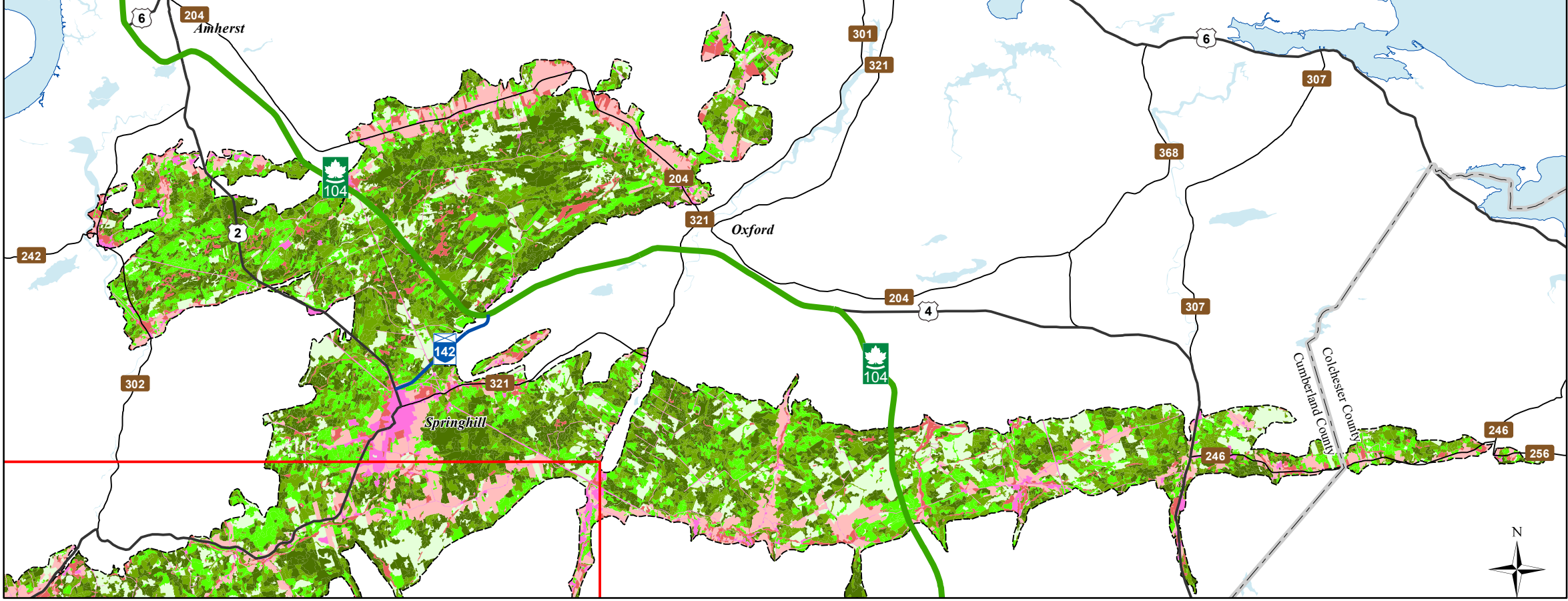
The information on this map may have come from a variety of government and non-government sources and is subject to change without notice. The Nova Scotia Department of Natural Resources accepts no liability for any errors, deficiencies, or faults on this map.



West



East



Ecological Landscape Analysis
Map 10
Seral Stages
Cumberland Hills - Ecodistrict 540

Legend

Ecodistrict Boundary

Ecological Land Cover

- Agriculture and Developed Vegetation
- Shrublands and Herbaceous Vegetation
- Urban/Industrial Vegetation and Unvegetated

Seral Stage

- Unclassified (e.g. recent cut)
- Early
- Mid
- Late
- Water

2 1 0 2 4 6 8 Km

Map Notes

Base data derived from the Nova Scotia Topographic Database (NSTDB). Copyright Province of Nova Scotia. All rights reserved. Service Nova Scotia & Municipal Relations, Nova Scotia Geomatics Centre, 160 Willow St., Amherst, Nova Scotia. Species status and locations data from Atlantic Canada Conservation Data Centre.

Additional information derived from Nova Scotia Department of Natural Resources, Geographic Information Systems (GIS) databases.

Disclaimer

The information on this map may have come from a variety of government and non-government sources and is subject to change without notice. The Nova Scotia Department of Natural Resources accepts no liability for any errors, deficiencies, or faults on this map.

