

Ecological Landscape Analysis
Map A
Elements

Chignecto Ridges - Ecodistrict 560

Legend

- Ecodistrict Boundary
- Valley Corridors
- Floodplain
- Jack Pine Hummocks and Ridges
- Red and Black Spruce Hummocks
- Salt Marshes
- Spruce Pine Flats
- Tolerant Mixedwood Hills
- Tolerant Mixedwood Slopes
- Wetlands
- Water



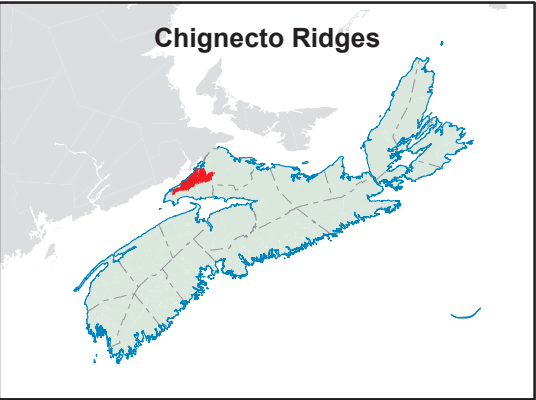
Map Notes

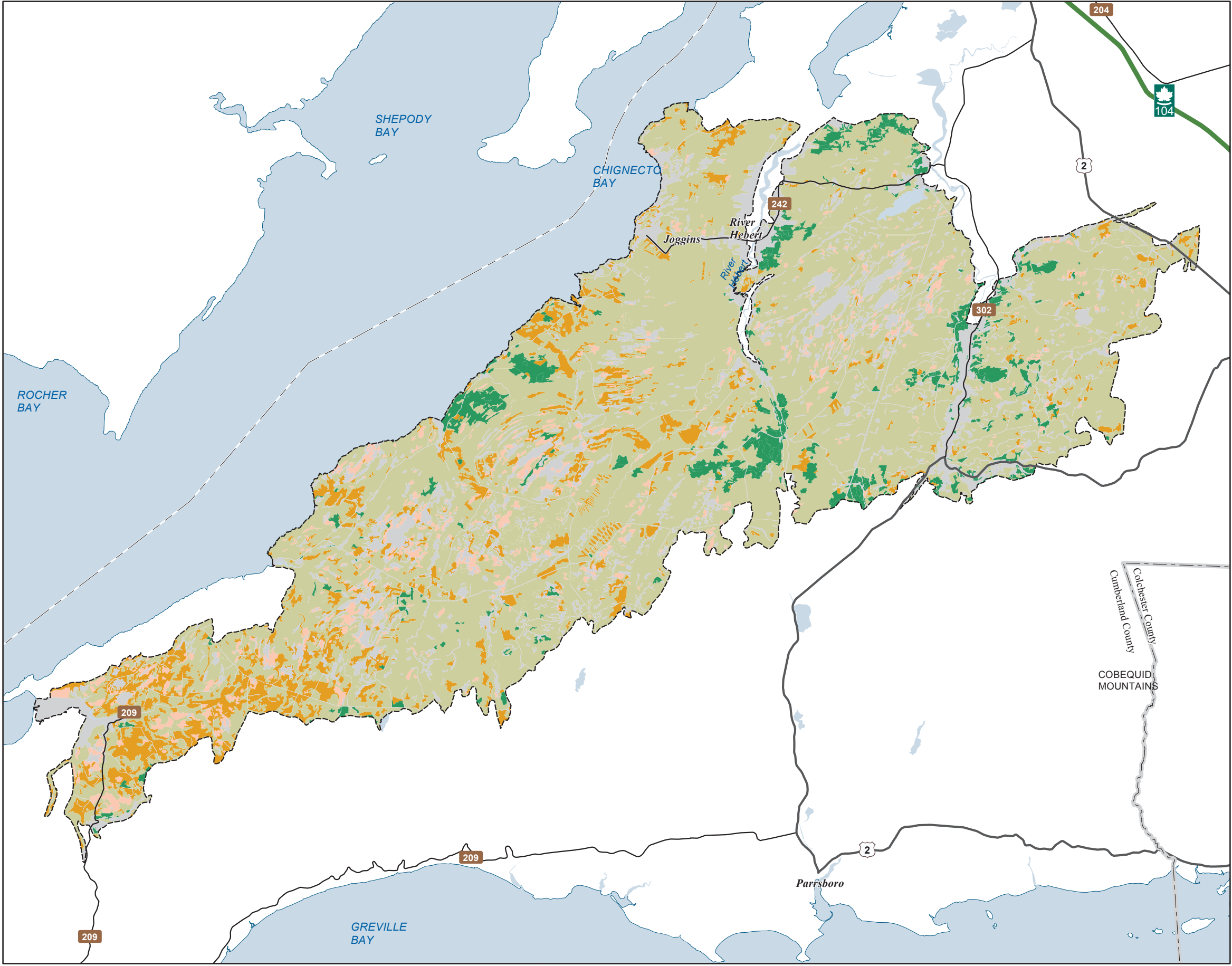
Base data derived from the Nova Scotia Topographic Database (NSTDB). Copyright Province of Nova Scotia. All rights reserved. The NSTDB is available from Service Nova Scotia & Municipal Relations, Nova Scotia Geomatics Centre, 160 Willow St., Amherst, Nova Scotia.

Additional information derived from Nova Scotia Department of Natural Resources, Geographic Information Systems (GIS) databases.

Disclaimer

The information on this map may have come from a variety of government and non-government sources and is subject to change without notice. The Nova Scotia Department of Natural Resources accepts no liability for any errors, deficiencies, or faults on this map.





Ecological Landscape Analysis
Map 1
Land Capability
Chignecto Ridges - Ecodistrict 560

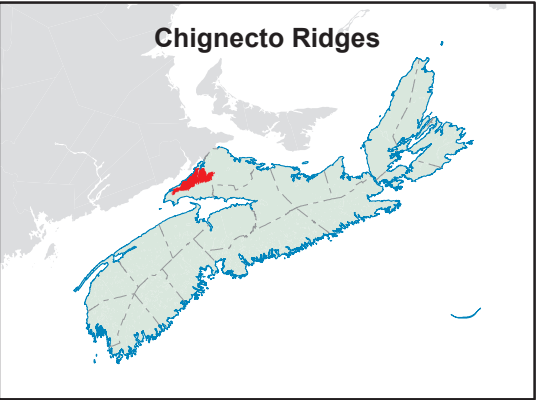
- Legend**
- Ecodistrict Boundary
 - 0 (No capability/converted)
 - 1 - 3 (Low)
 - 4 - (Low - Medium)
 - 5 - (Medium)
 - 6+ - (High)
 - Water

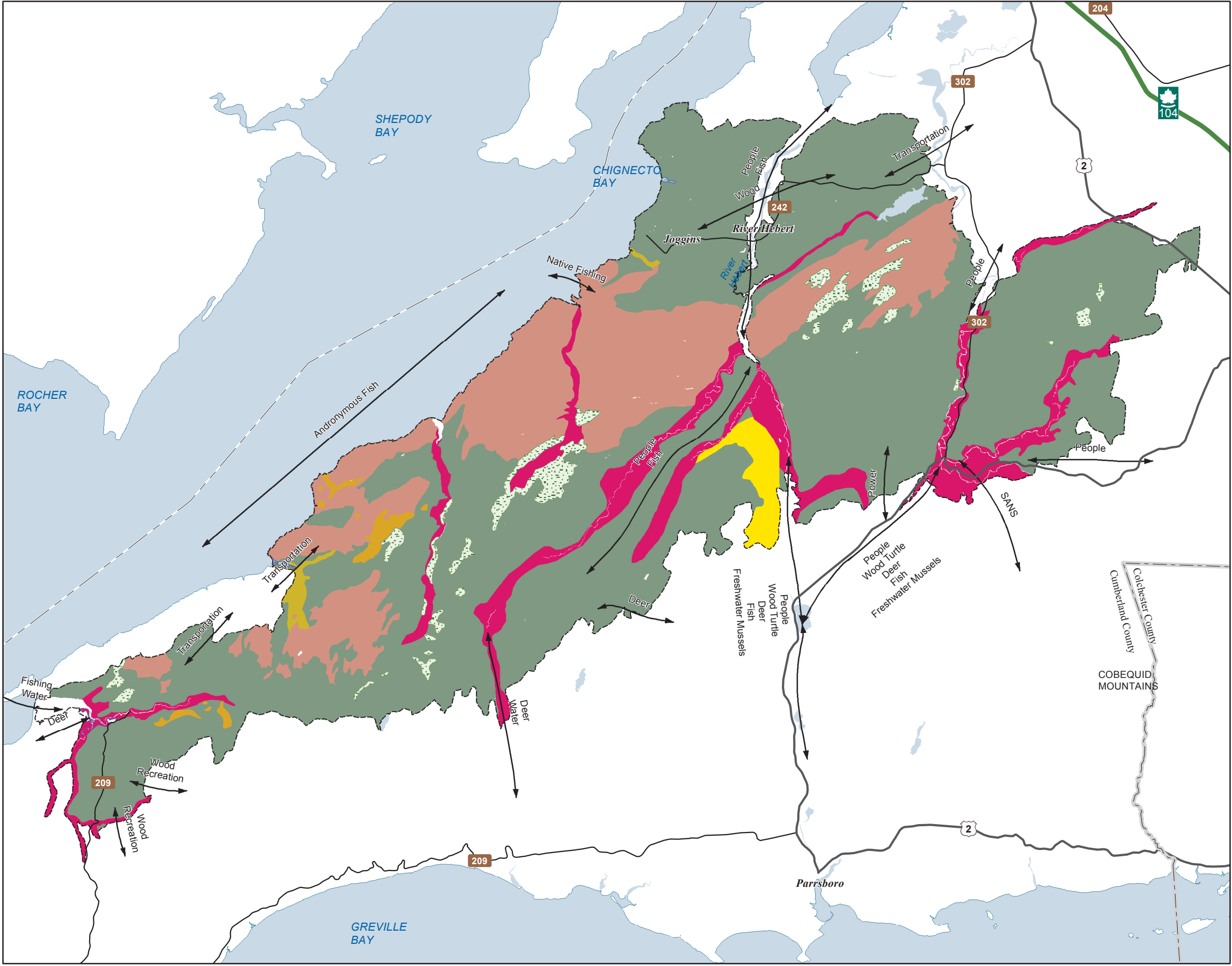


Map Notes
Base data derived from the Nova Scotia Topographic Database (NSTDB). Copyright Province of Nova Scotia. All rights reserved. The NSTDB is available from Service Nova Scotia & Municipal Relations, Nova Scotia Geomatics Centre, 160 Willow St., Amherst, Nova Scotia.

Additional information derived from Nova Scotia Department of Natural Resources, Geographic Information Systems (GIS) databases.

Disclaimer
The information on this map may have come from a variety of government and non-government sources and is subject to change without notice. The Nova Scotia Department of Natural Resources accepts no liability for any errors, deficiencies, or faults on this map.





Ecological Landscape Analysis
Map 2
Elements and Flows

Chignecto Ridges - Ecodistrict 560

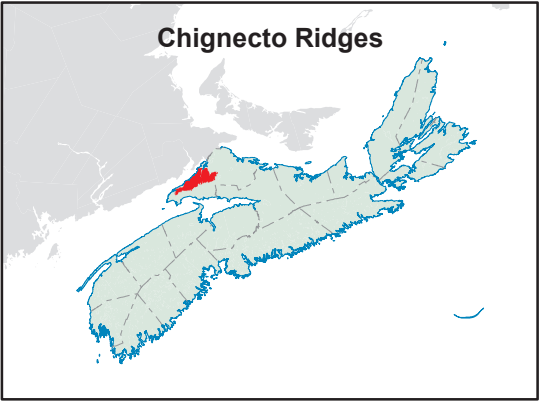
- Legend**
- Ecodistrict Boundary
 - Flows
 - Floodplain
 - Jack Pine Hummocks and Ridges
 - Red and Black Spruce Hummocks
 - Salt Marshes
 - Spruce Pine Flats
 - Tolerant Mixedwood Hills
 - Tolerant Mixedwood Slopes
 - Wetlands
 - Valley Corridors
 - Water

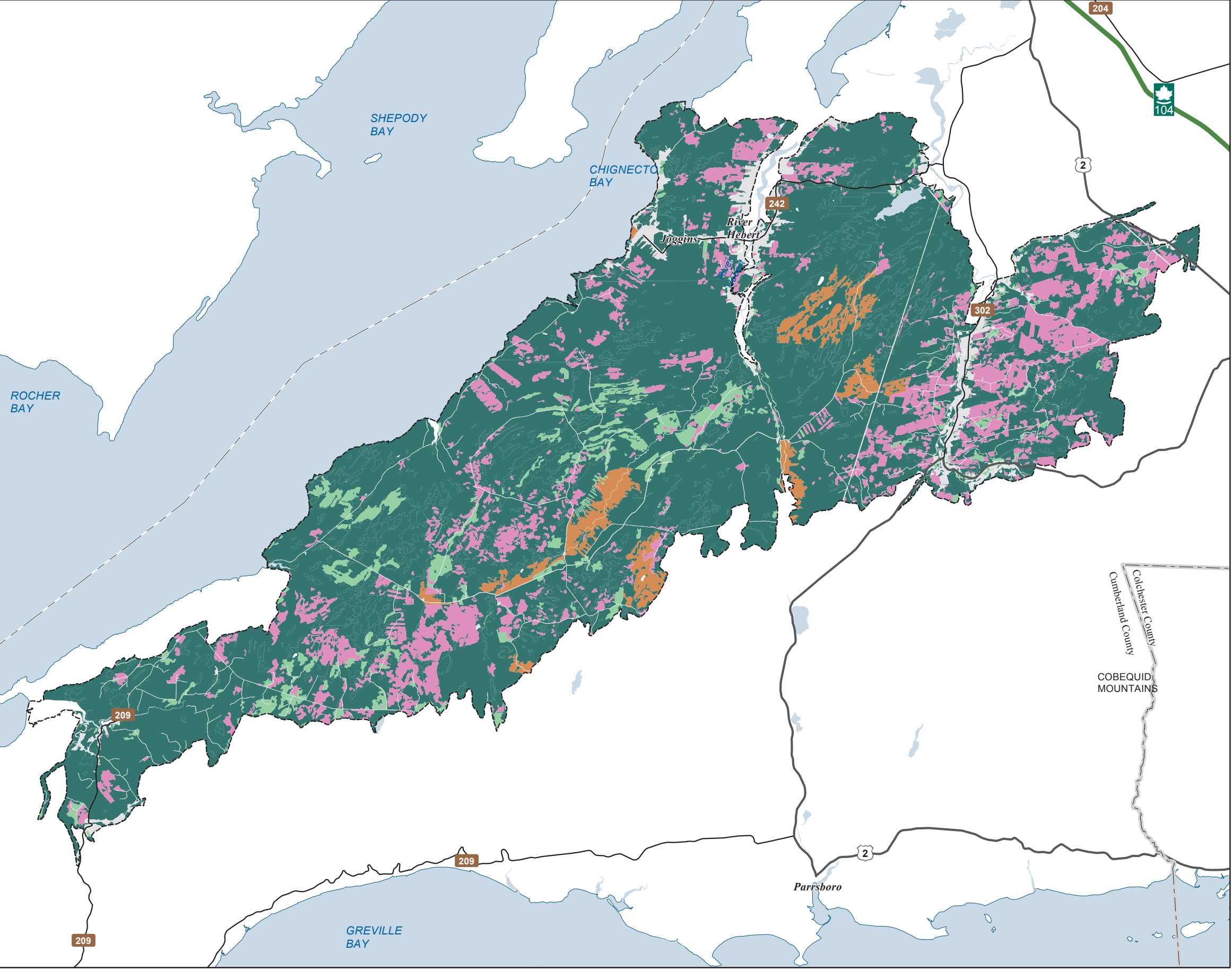


Map Notes
Base data derived from the Nova Scotia Topographic Database (NSTDB). Copyright Province of Nova Scotia. All rights reserved. The NSTDB is available from Service Nova Scotia & Municipal Relations, Nova Scotia Geomatics Centre, 160 Willow St., Amherst, Nova Scotia.

Additional information derived from Nova Scotia Department of Natural Resources, Geographic Information Systems (GIS) databases.

Disclaimer
The information on this map may have come from a variety of government and non-government sources and is subject to change without notice. The Nova Scotia Department of Natural Resources accepts no liability for any errors, deficiencies, or faults on this map.

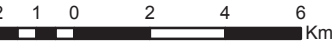




Ecological Landscape Analysis
Map 3
Ecological Emphasis Classes

Chignecto Ridges - Ecodistrict 560

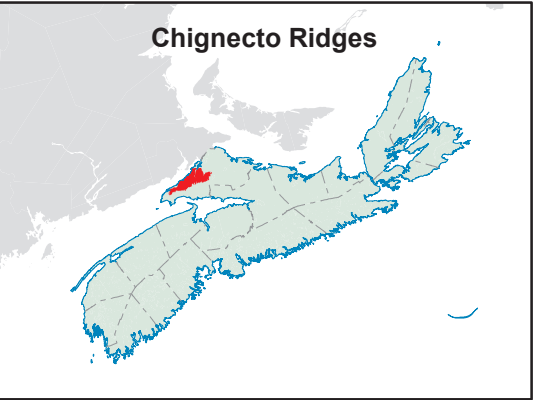
- Legend**
- Ecodistrict Boundary
 - Reserve
 - Extensive
 - Intensive
 - Converted
 - Unclassified
 - Water

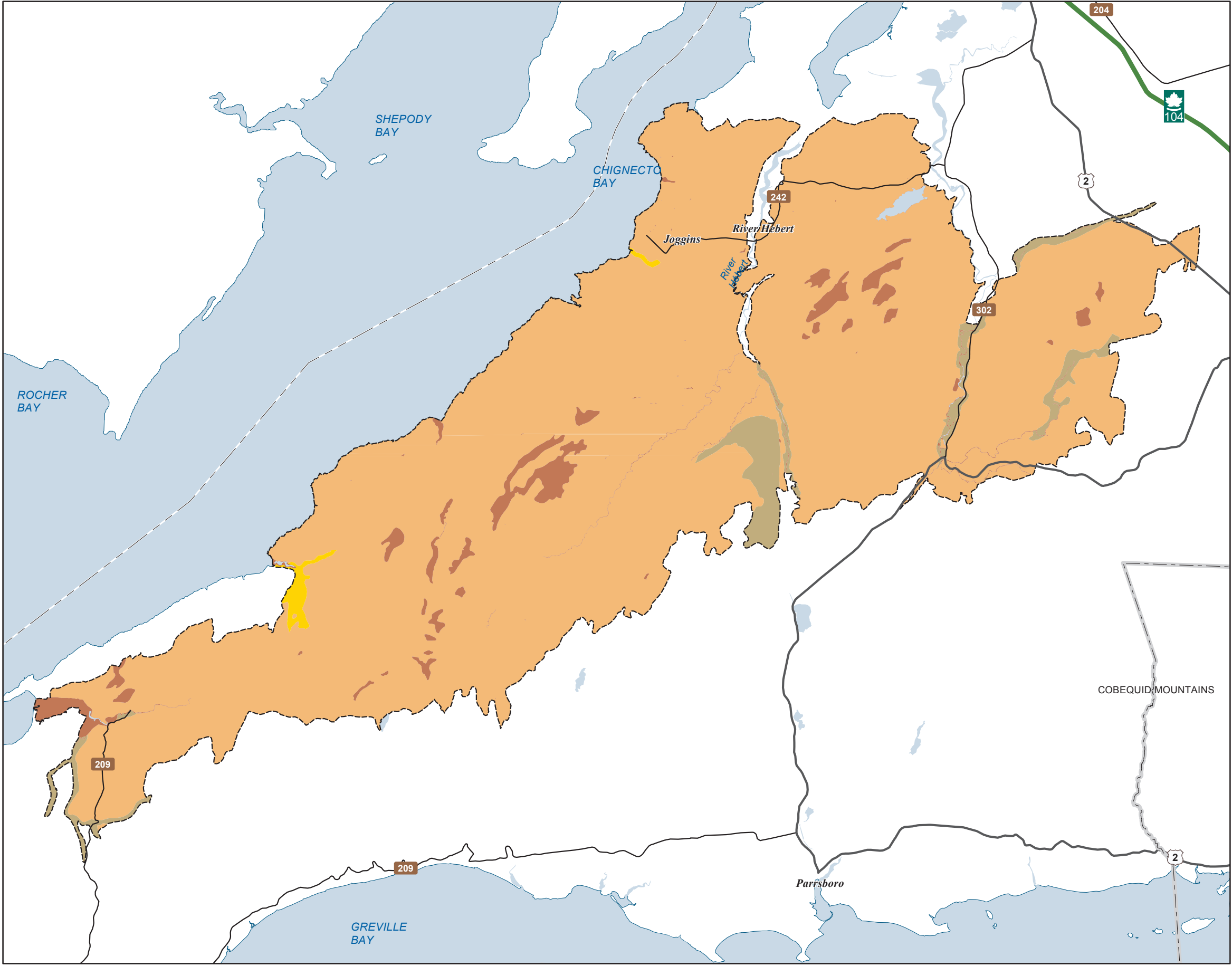


Map Notes
Base data derived from the Nova Scotia Topographic Database (NSTDB). Copyright Province of Nova Scotia. All rights reserved. The NSTDB is available from Service Nova Scotia & Municipal Relations, Nova Scotia Geomatics Centre, 160 Willow St., Amherst, Nova Scotia.

Additional information derived from Nova Scotia Department of Natural Resources, Geographic Information Systems (GIS) databases.

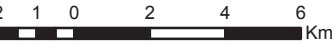
Disclaimer
The information on this map may have come from a variety of government and non-government sources and is subject to change without notice. The Nova Scotia Department of Natural Resources accepts no liability for any errors, deficiencies, or faults on this map.





Ecological Landscape Analysis
Map 4
Natural Disturbances
Chignecto Ridges - Ecodistrict 560

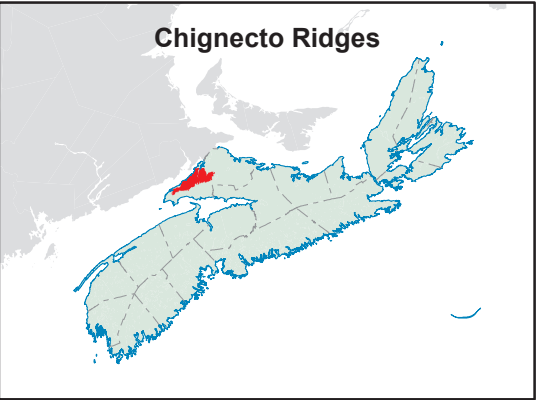
- Legend**
- Ecodistrict Boundary
 - Frequent
 - Gap
 - Infrequent
 - Open Seral
 - Water

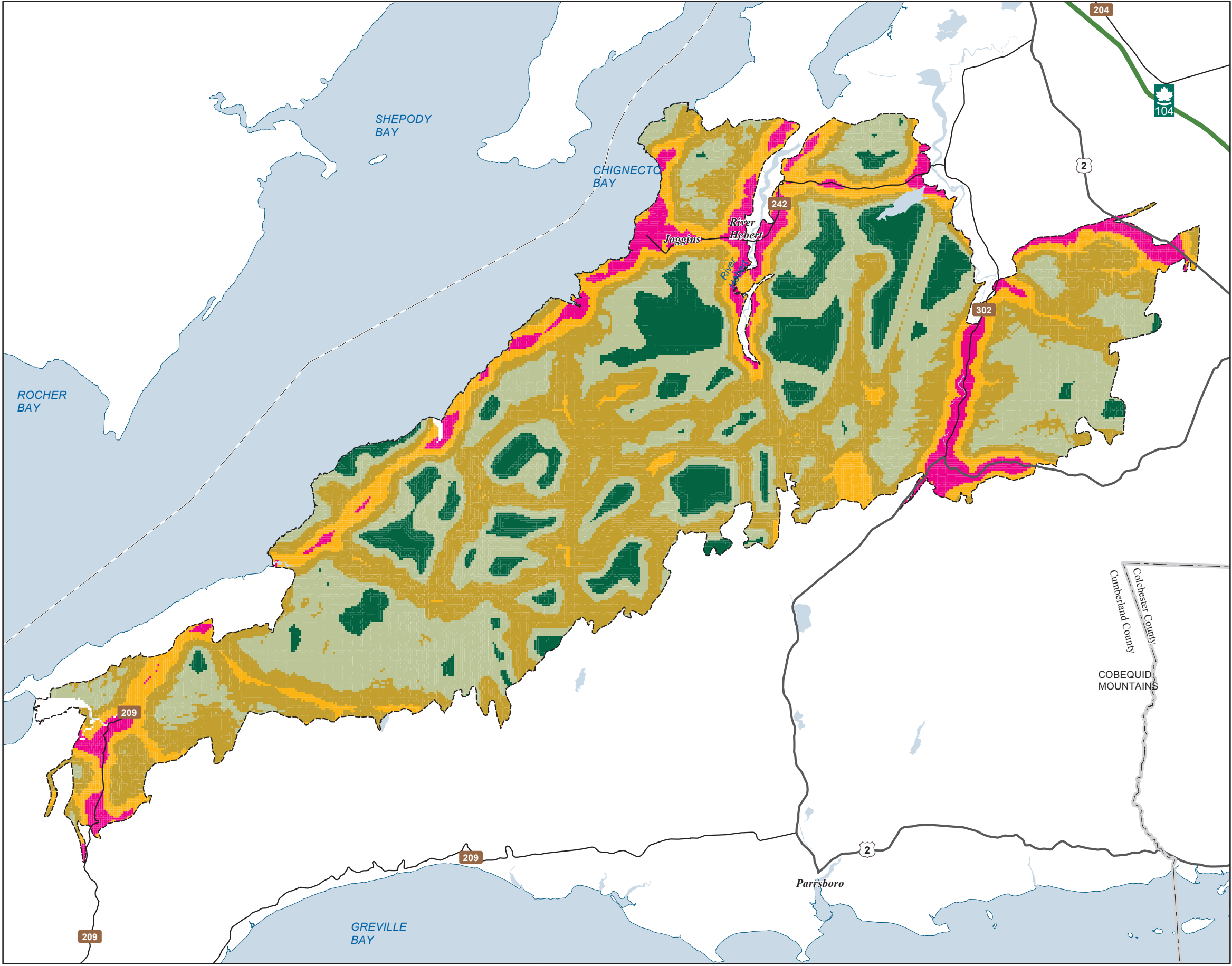


Map Notes
Base data derived from the Nova Scotia Topographic Database (NSTDB). Copyright Province of Nova Scotia. All rights reserved. The NSTDB is available from Service Nova Scotia & Municipal Relations, Nova Scotia Geomatics Centre, 160 Willow St., Amherst, Nova Scotia.

Additional information derived from Nova Scotia Department of Natural Resources, Geographic Information Systems (GIS) databases.

Disclaimer
The information on this map may have come from a variety of government and non-government sources and is subject to change without notice. The Nova Scotia Department of Natural Resources accepts no liability for any errors, deficiencies, or faults on this map.





Ecological Landscape Analysis
Map 5
Road Index
Chignecto Ridges - Ecodistrict 560

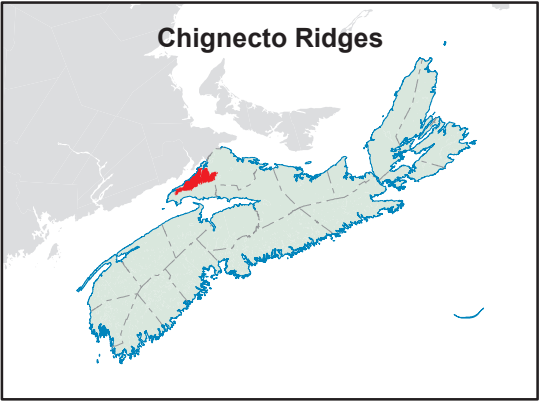
- Legend**
- Ecodistrict Boundary
 - Remote
 - Forest Resource
 - Mixed Rural
 - Agriculture Suburban
 - Urban
 - Water

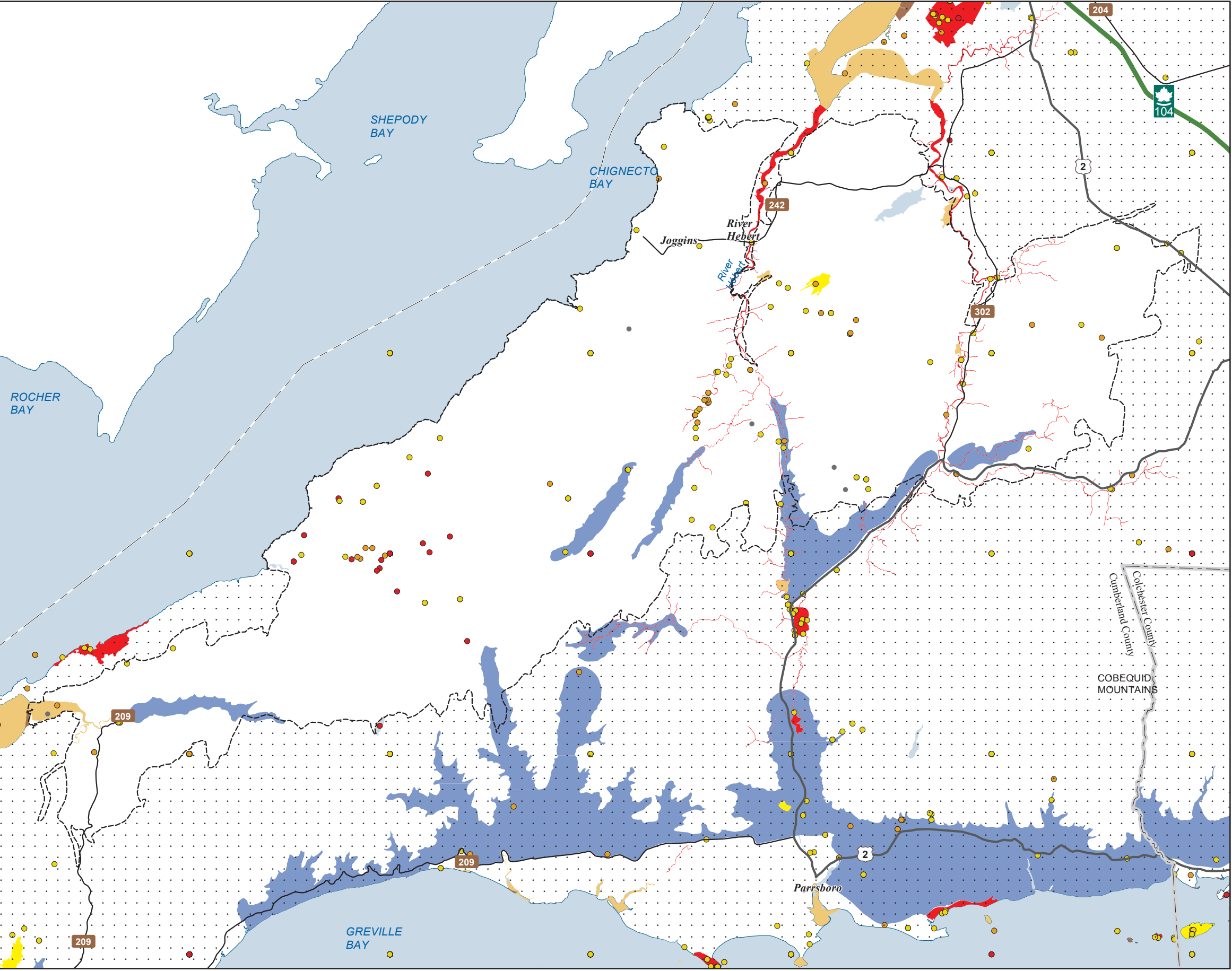


Map Notes
Base data derived from the Nova Scotia Topographic Database (NSTDB). Copyright Province of Nova Scotia. All rights reserved. The NSTDB is available from Service Nova Scotia & Municipal Relations, Nova Scotia Geomatics Centre, 160 Willow St., Amherst, Nova Scotia.

Additional information derived from Nova Scotia Department of Natural Resources, Geographic Information Systems (GIS) databases.

Disclaimer
The information on this map may have come from a variety of government and non-government sources and is subject to change without notice. The Nova Scotia Department of Natural Resources accepts no liability for any errors, deficiencies, or faults on this map.





Date: 6/25/2015

Ecological Landscape Analysis

Map 6

Special Occurrences - Species

Chignecto Ridges - Ecodistrict 560

Legend

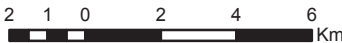
- Ecodistrict Boundary
- Outside of Ecodistrict
- Other Occurrences (Point of Interest)

ACCDC Occurrences

- Species At Risk
- Species of Conservation Concern - May Be At Risk
- Species of Conservation Concern - Sensitive

NS DNR Significant Habitat

- Species at risk
- Species of conservation concern
- Deer wintering
- Migratory bird
- Other significant habitat
- Water



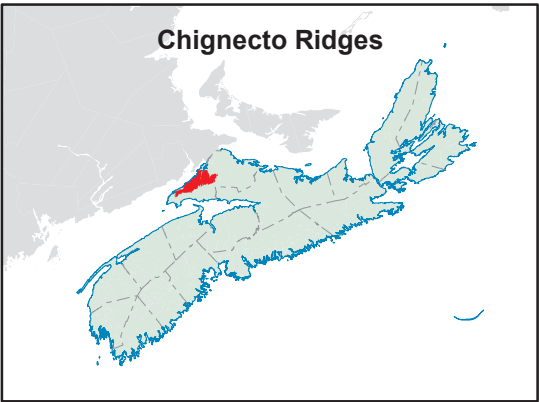
Map Notes

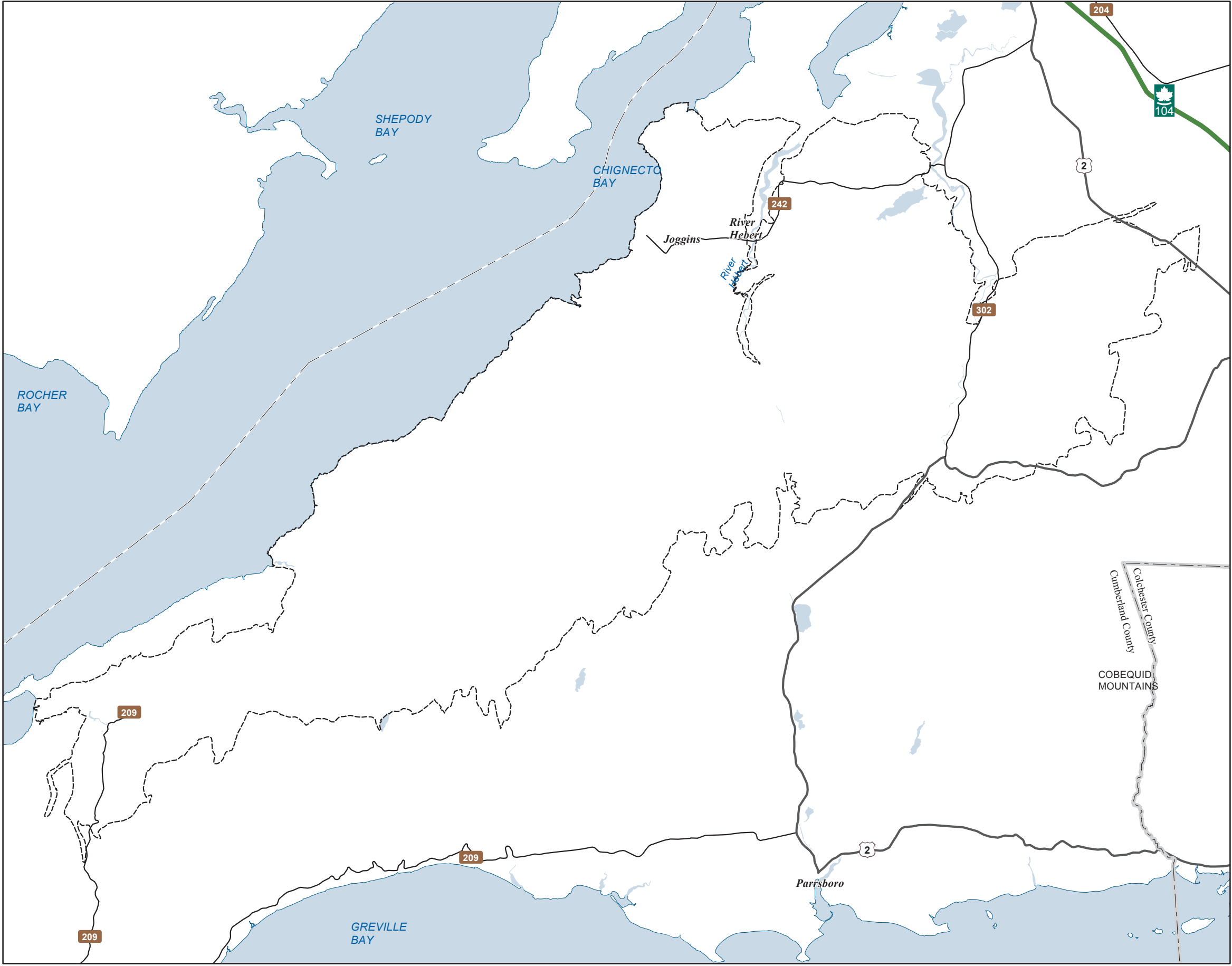
Base data derived from the Nova Scotia Topographic Database (NSTDB). Copyright Province of Nova Scotia. All rights reserved. Service Nova Scotia & Municipal Relations, Nova Scotia Geomatics Centre, 160 Willow St., Amherst, Nova Scotia. Species status and locations data from Atlantic Canada Conservation Data Centre.

Additional information derived from Nova Scotia Department of Natural Resources, Geographic Information Systems (GIS) databases.

Disclaimer

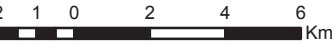
The information on this map may have come from a variety of government and non-government sources and is subject to change without notice. The Nova Scotia Department of Natural Resources accepts no liability for any errors, deficiencies, or faults on this map.





Ecological Landscape Analysis
Map 7
Rare Ecosections
Chignecto Ridges - Ecodistrict 560

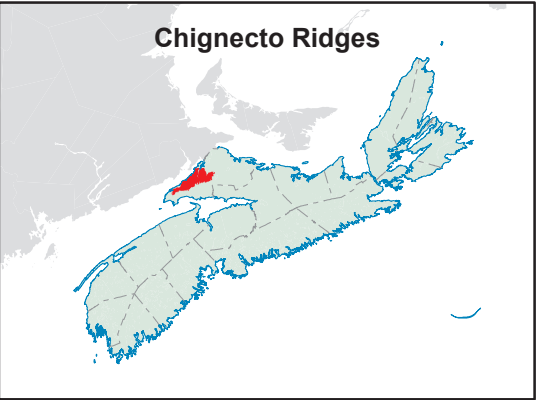
- Legend**
- Ecodistrict Boundary
 - Rare Ecosections
 - Water

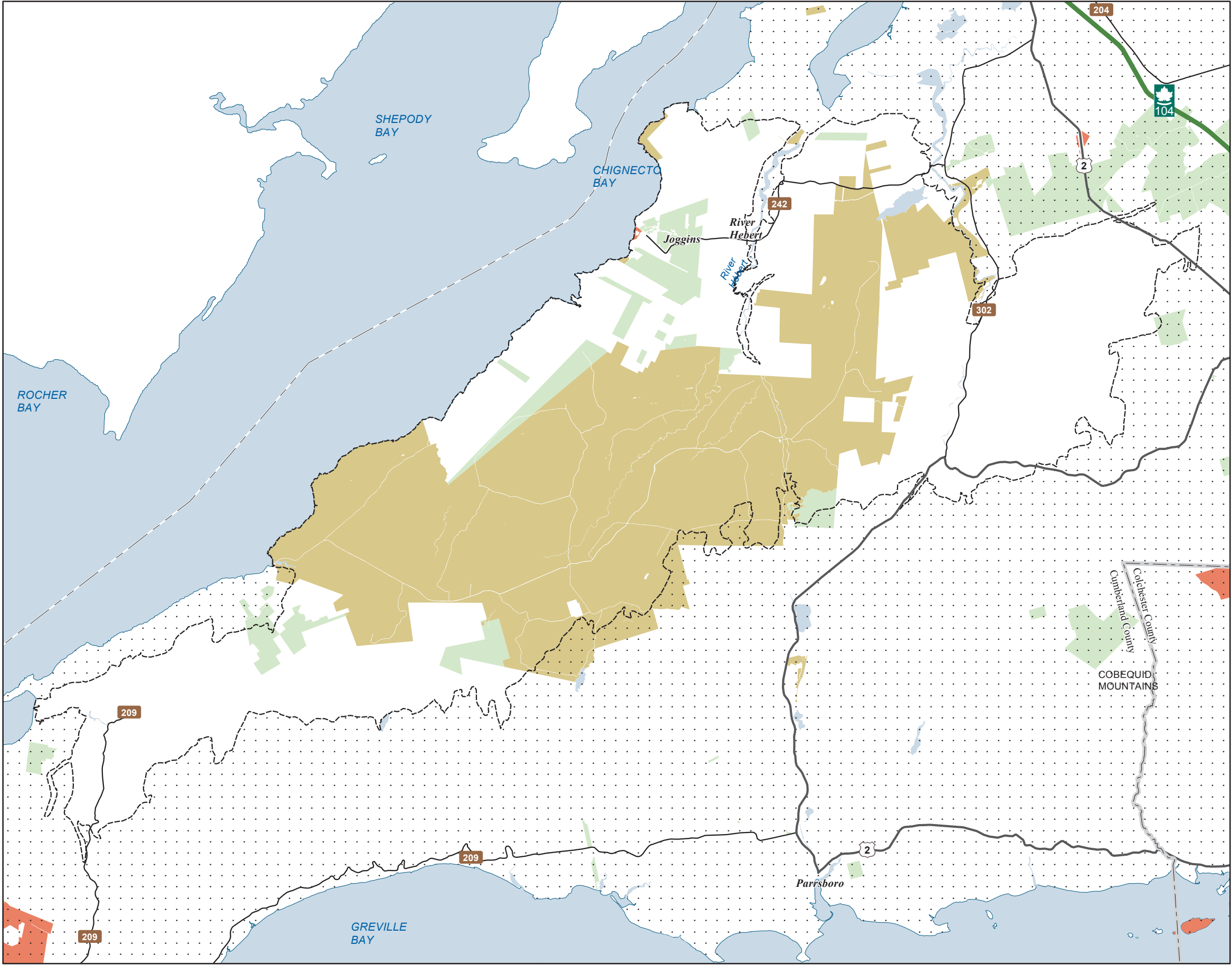


Map Notes
Base data derived from the Nova Scotia Topographic Database (NSTDB). Copyright Province of Nova Scotia. All rights reserved. The NSTDB is available from Service Nova Scotia & Municipal Relations, Nova Scotia Geomatics Centre, 160 Willow St., Amherst, Nova Scotia.

Additional information derived from Nova Scotia Department of Natural Resources, Geographic Information Systems (GIS) databases.

Disclaimer
The information on this map may have come from a variety of government and non-government sources and is subject to change without notice. The Nova Scotia Department of Natural Resources accepts no liability for any errors, deficiencies, or faults on this map.





Ecological Landscape Analysis
Map 8
IRM Classes

Chignecto Ridges - Ecodistrict 560

Legend

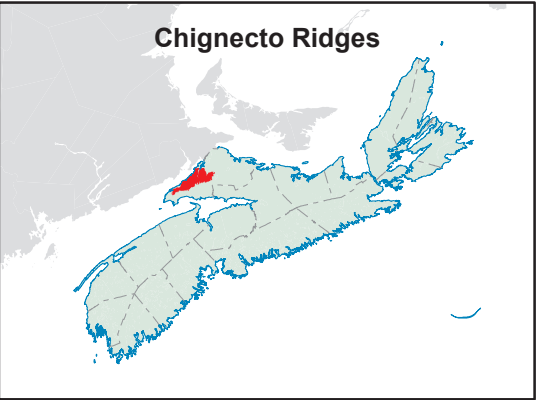
- Ecodistrict Boundary
- C1 - General Resource Use
- C2 - Multiple and Adaptive Resource Use
- C3 - Protected and Limited Use
- Water

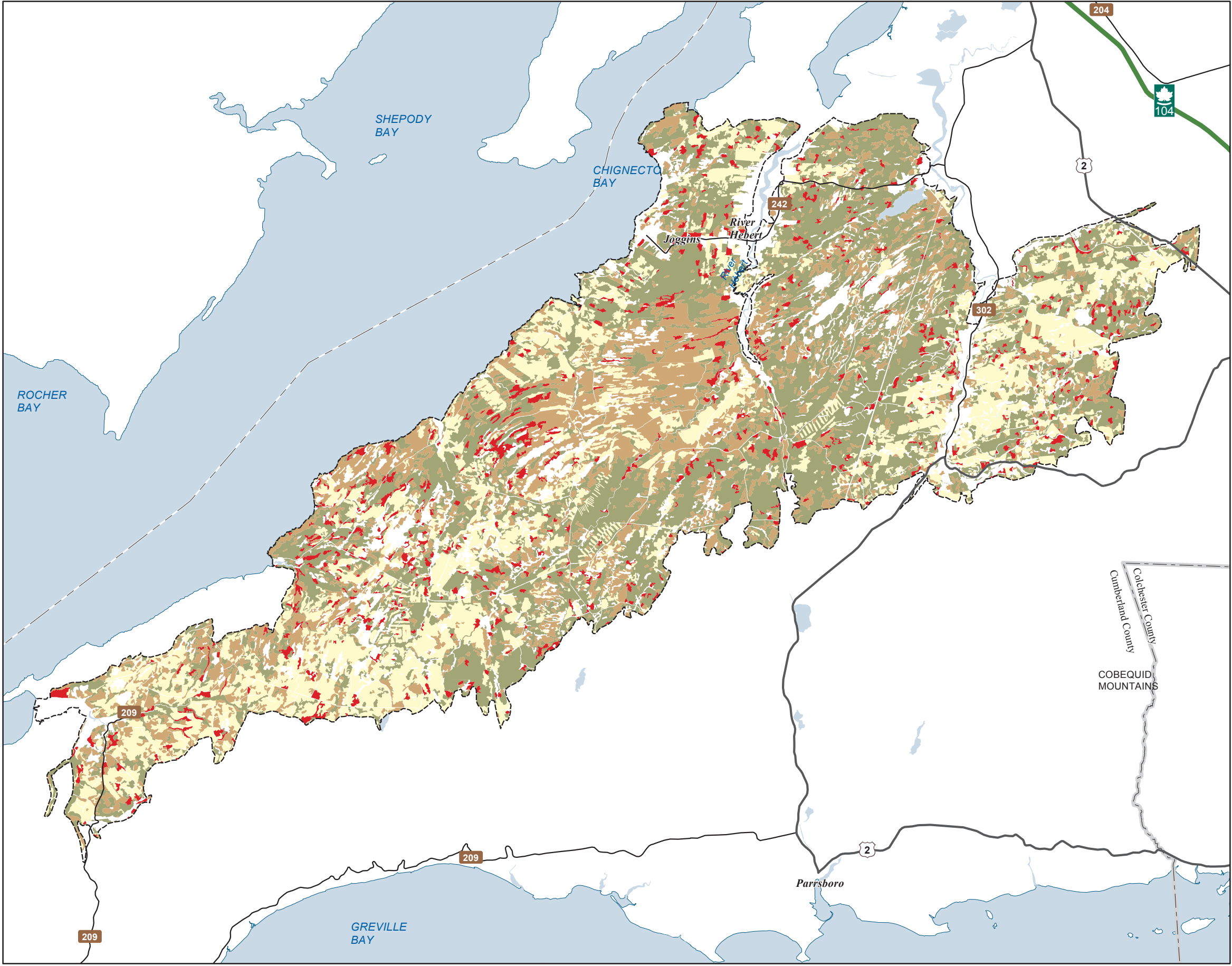


Map Notes
Base data derived from the Nova Scotia Topographic Database (NSTDB). Copyright Province of Nova Scotia. All rights reserved. The NSTDB is available from Service Nova Scotia & Municipal Relations, Nova Scotia Geomatics Centre, 160 Willow St., Amherst, Nova Scotia.

Additional information derived from Nova Scotia Department of Natural Resources, Geographic Information Systems (GIS) databases.

Disclaimer
The information on this map may have come from a variety of government and non-government sources and is subject to change without notice. The Nova Scotia Department of Natural Resources accepts no liability for any errors, deficiencies, or faults on this map.





Ecological Landscape Analysis
Map 9
Development Classes
Chignecto Ridges - Ecodistrict 560

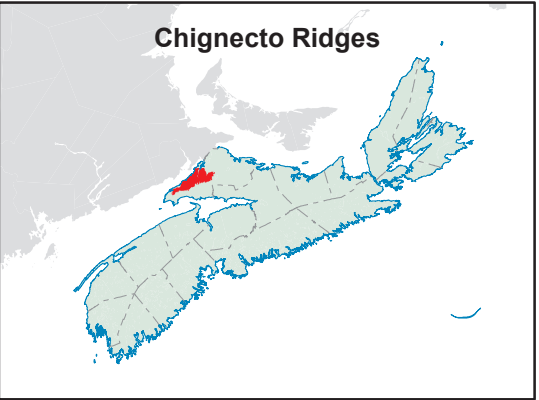
- Legend**
- Ecodistrict Boundary
 - Not forested
 - Establishment
 - Young Forest
 - Mature Timber
 - Multi-Aged / Old Forest
 - Water

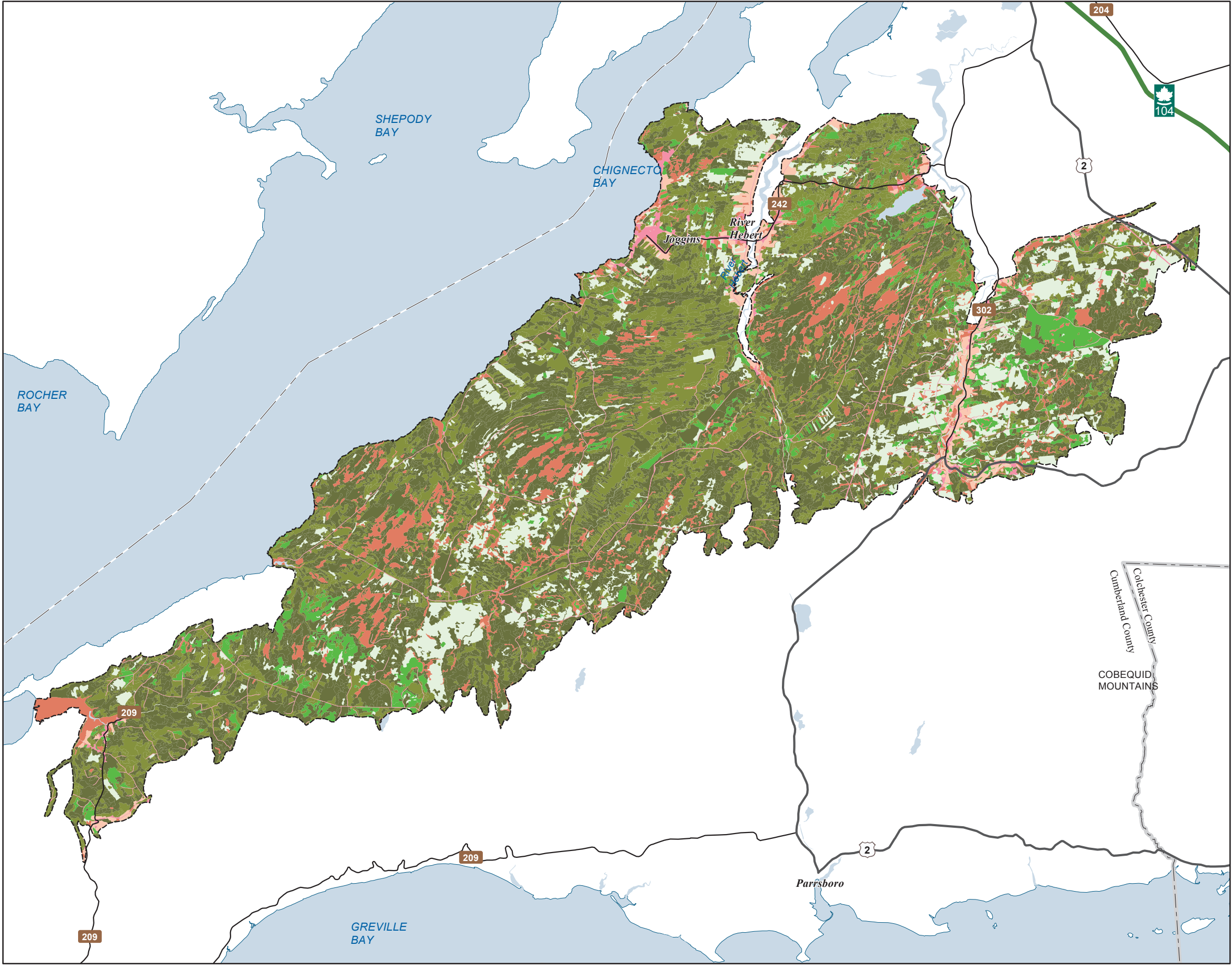


Map Notes
Base data derived from the Nova Scotia Topographic Database (NSTDB). Copyright Province of Nova Scotia. All rights reserved. The NSTDB is available from Service Nova Scotia & Municipal Relations, Nova Scotia Geomatics Centre, 160 Willow St., Amherst, Nova Scotia.

Additional information derived from Nova Scotia Department of Natural Resources, Geographic Information Systems (GIS) databases.

Disclaimer
The information on this map may have come from a variety of government and non-government sources and is subject to change without notice. The Nova Scotia Department of Natural Resources accepts no liability for any errors, deficiencies, or faults on this map.





Ecological Landscape Analysis
Map 10
Seral Stages

Chignecto Ridges - Ecodistrict 560

Legend

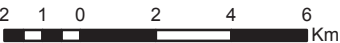
Ecodistrict Boundary

Ecological Land Cover

- Agriculture and Developed Vegetation
- Shrublands and Herbaceous Vegetation
- Sparse Vegetation and Naturally Unvegetated
- Urban/Industrial Vegetation and Unvegetated

Seral Stage

- Unclassified (e.g. recent cut)
- Early
- Mid
- Late
- Water



Map Notes

Base data derived from the Nova Scotia Topographic Database (NSTDB). Copyright Province of Nova Scotia. All rights reserved. The NSTDB is available from Service Nova Scotia & Municipal Relations, Nova Scotia Geomatics Centre, 160 Willow St., Amherst, Nova Scotia.

Additional information derived from Nova Scotia Department of Natural Resources, Geographic Information Systems (GIS) databases.

Disclaimer

The information on this map may have come from a variety of government and non-government sources and is subject to change without notice. The Nova Scotia Department of Natural Resources accepts no liability for any errors, deficiencies, or faults on this map.

