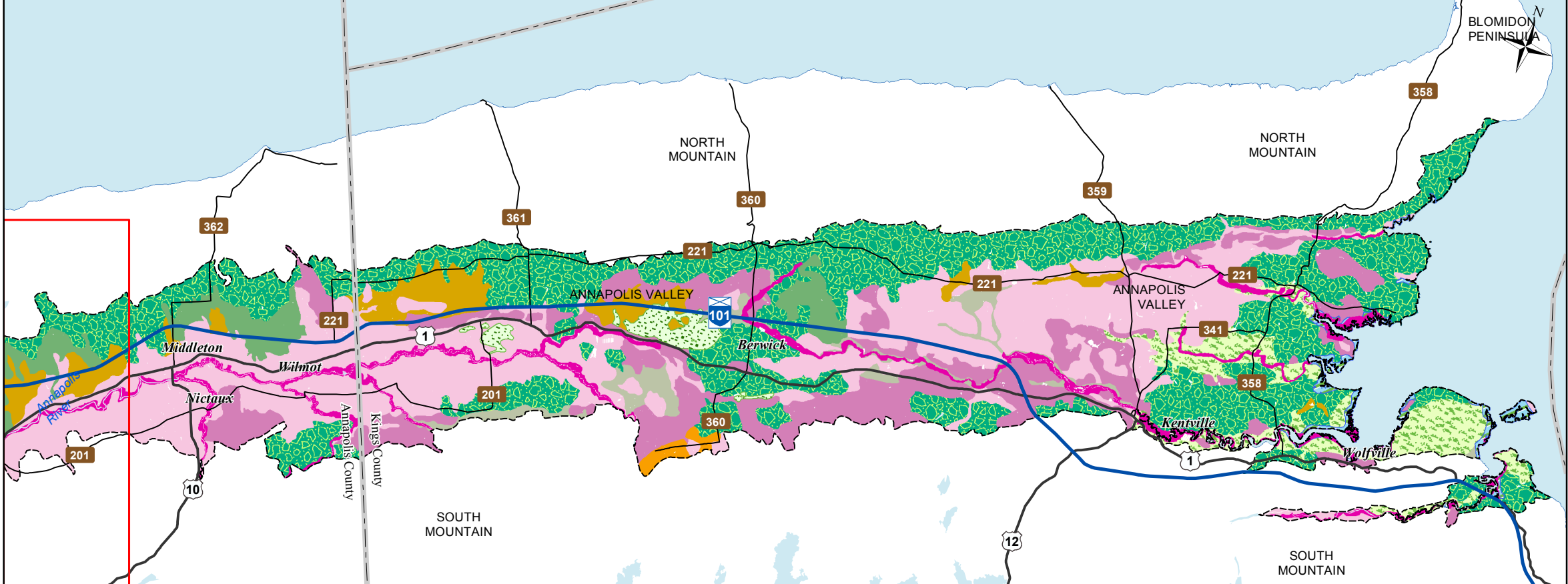
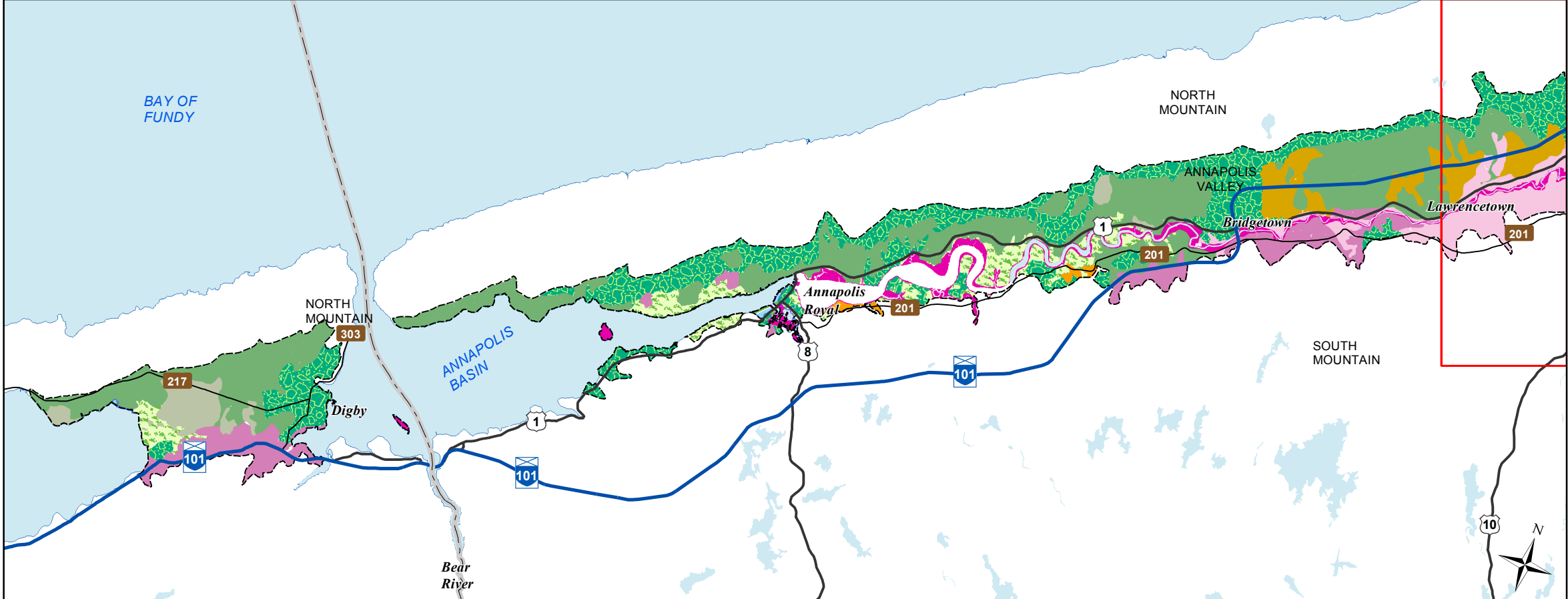


West



East



# Ecological Landscape Analysis Map A Elements

Annapolis Valley - Ecodistrict 610

**Legend**

- Ecodistrict Boundary
- Valley Corridors
- Floodplain
- Marshes and Grasslands
- Pine Oak Flats
- Pine Oak Hills and Hummocks
- Red and Black Spruce Hummocks
- Salt Marshes
- Spruce Hemlock Pine Hummocks and Hills
- Spruce Pine Flats
- Tolerant Hardwood Hills
- Wetlands
- Water

2 1 0 2 4 6 8 Km

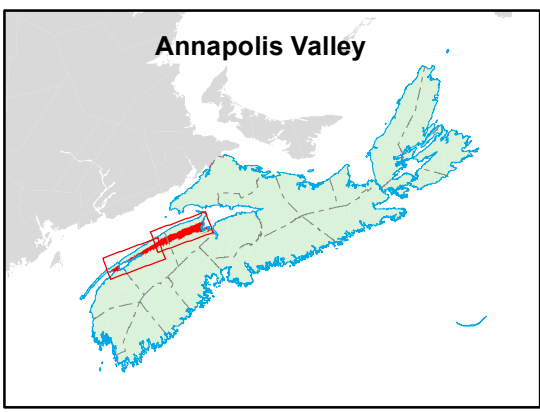
**Map Notes**

Base data derived from the Nova Scotia Topographic Database (NSTDB). Copyright Province of Nova Scotia. All rights reserved. Service Nova Scotia & Municipal Relations, Nova Scotia Geomatics Centre, 160 Willow St., Amherst, Nova Scotia. Species status and locations data from Atlantic Canada Conservation Data Centre.

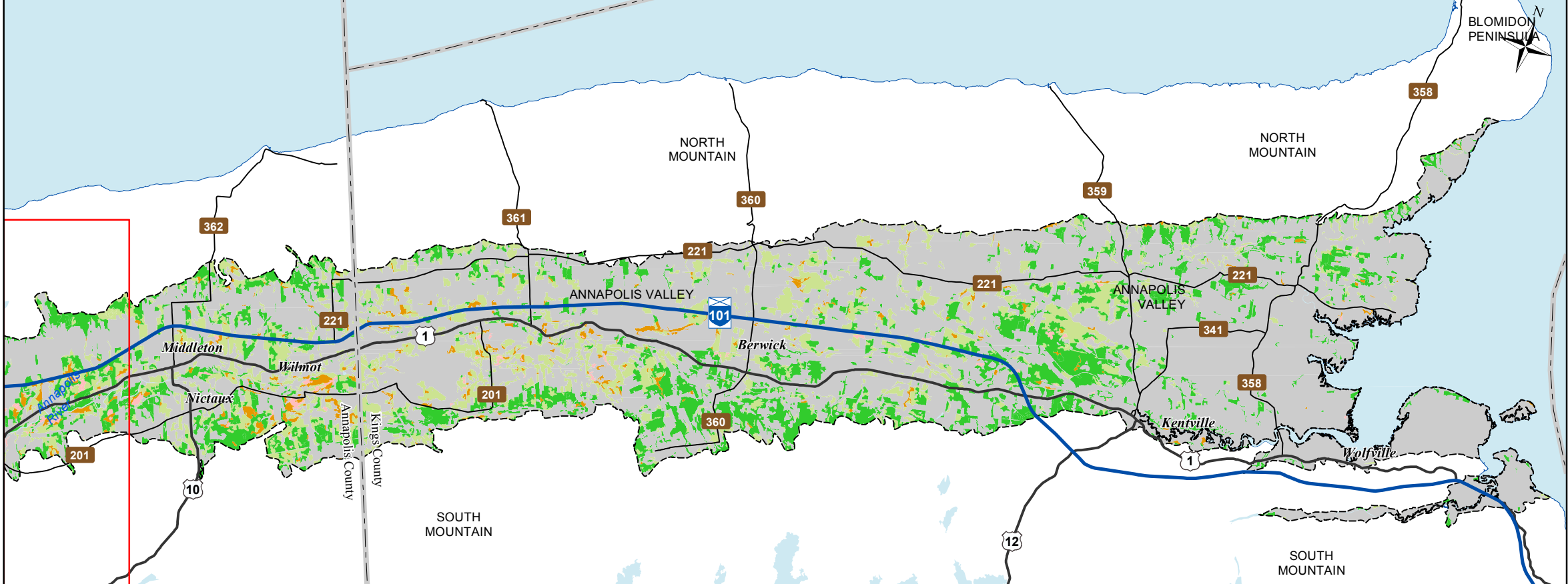
Additional information derived from Nova Scotia Department of Natural Resources, Geographic Information Systems (GIS) databases.

**Disclaimer**

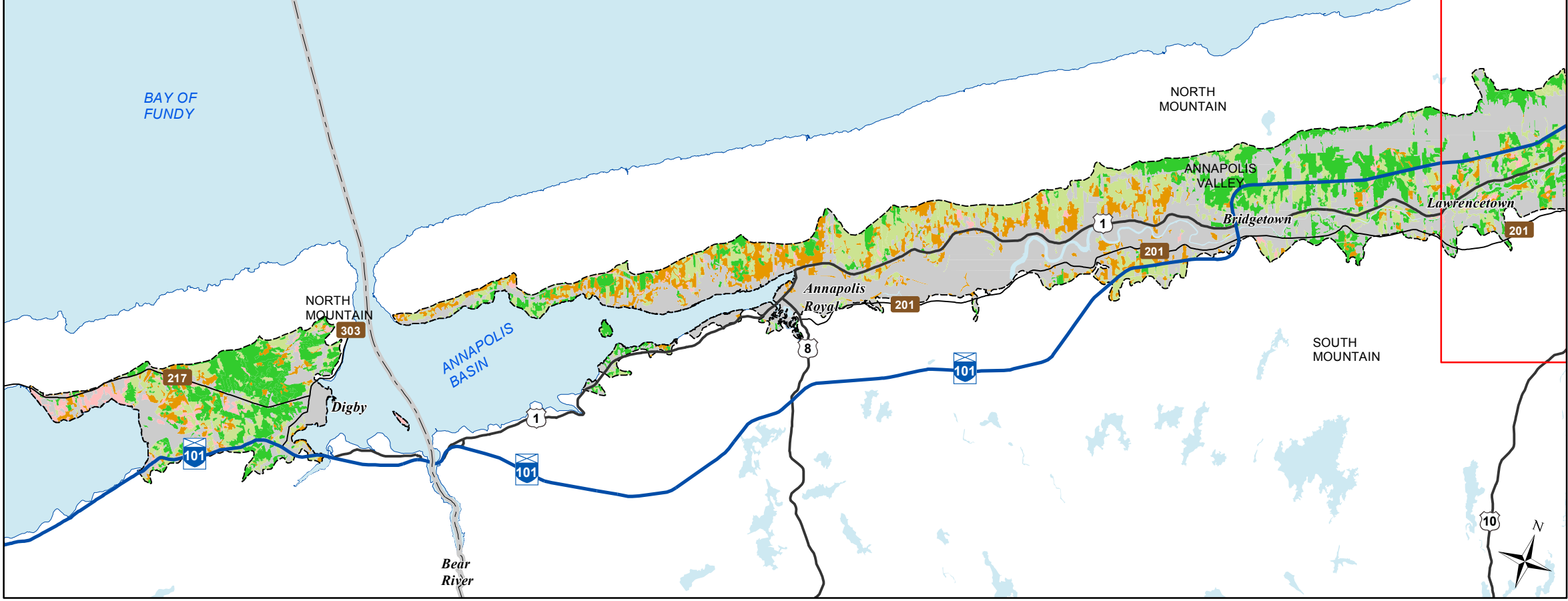
The information on this map may have come from a variety of government and non-government sources and is subject to change without notice. The Nova Scotia Department of Natural Resources accepts no liability for any errors, deficiencies, or faultson this map.



West



East



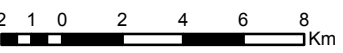
# Ecological Landscape Analysis

## Map 1

### Land Capability

Annapolis Valley - Ecodistrict 610

- Legend**
- Ecodistrict Boundary
  - 0 (No capability/converted)
  - 1 - 3 (Low)
  - 4 - (Low - Medium)
  - 5 - (Medium)
  - 6+ - (High)
  - Water



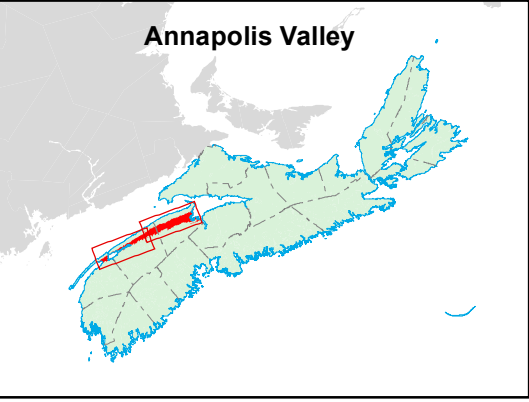
**Map Notes**

Base data derived from the Nova Scotia Topographic Database (NSTDB). Copyright Province of Nova Scotia. All rights reserved. Service Nova Scotia & Municipal Relations, Nova Scotia Geomatics Centre, 160 Willow St., Amherst, Nova Scotia. Species status and locations data from Atlantic Canada Conservation Data Centre.

Additional information derived from Nova Scotia Department of Natural Resources, Geographic Information Systems (GIS) databases.

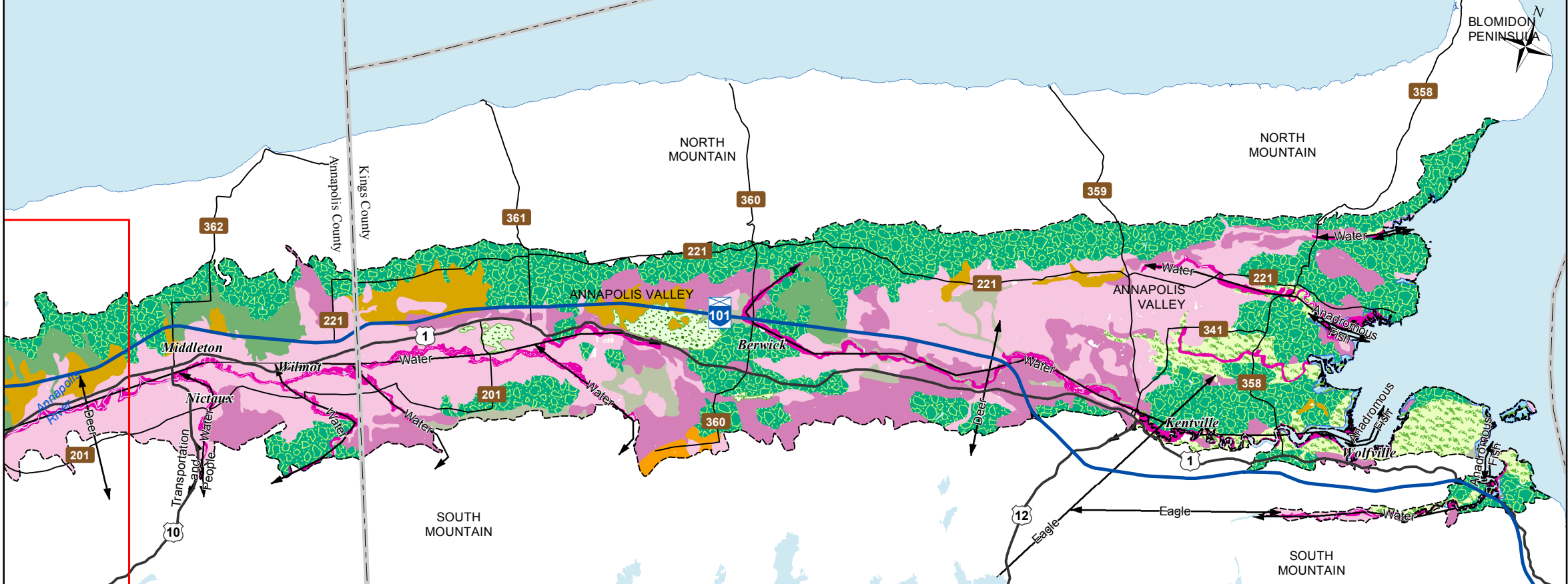
**Disclaimer**

The information on this map may have come from a variety of government and non-government sources and is subject to change without notice. The Nova Scotia Department of Natural Resources accepts no liability for any errors, deficiencies, or faults on this map.

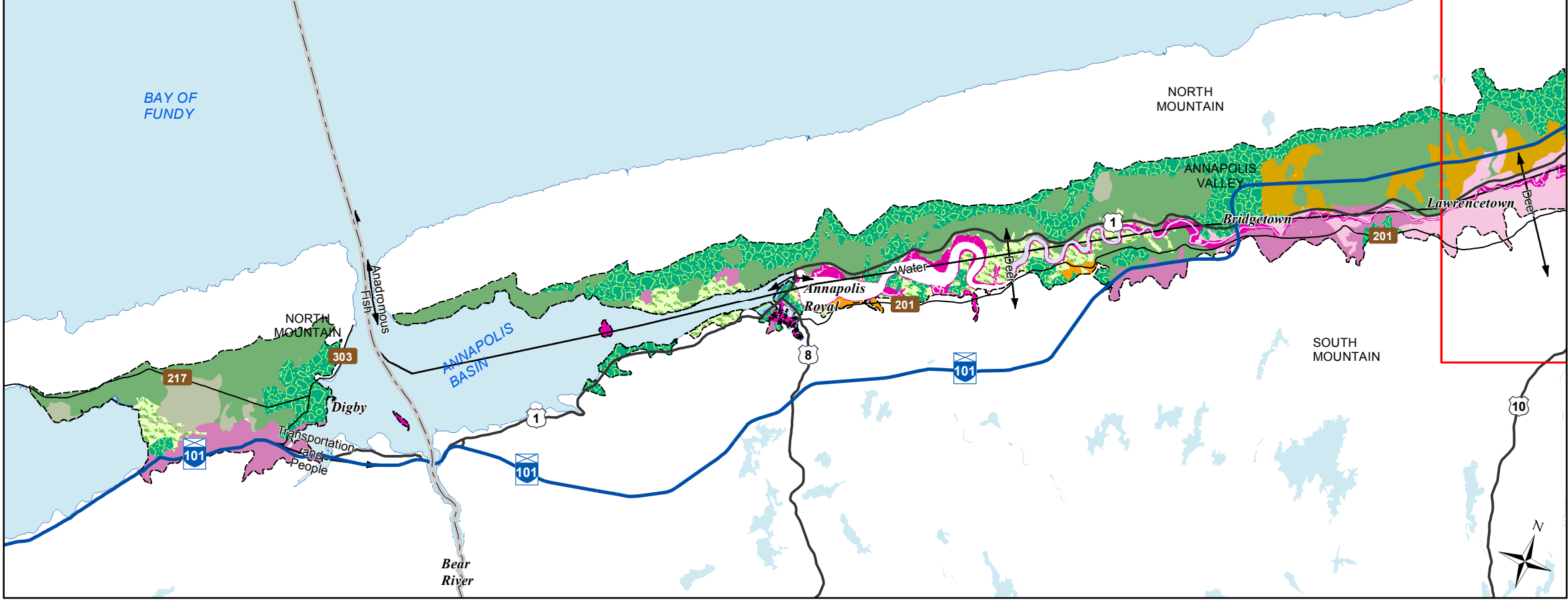




West



East



# Ecological Landscape Analysis

## Map 2

### Elements and Flows

Annapolis Valley - Ecodistrict 610

**Legend**

- Ecodistrict Boundary
- Flows
- Valley Corridors
- Floodplain
- Marshes and Grasslands
- Pine Oak Flats
- Pine Oak Hills and Hummocks
- Red and Black Spruce Hummocks
- Salt Marshes
- Spruce Hemlock Pine Hummocks and Hills
- Spruce Pine Flats
- Tolerant Hardwood Hills
- Wetlands
- Water

2 1 0 2 4 6 8 Km

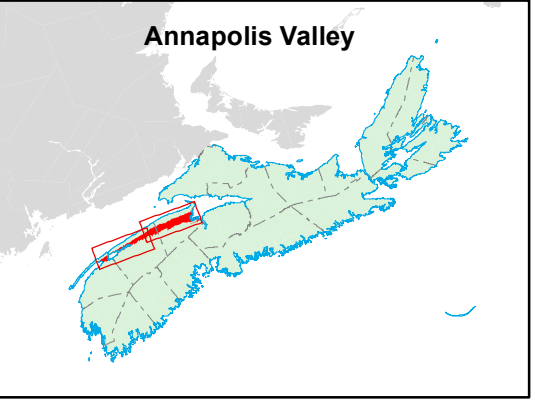
**Map Notes**

Base data derived from the Nova Scotia Topographic Database (NSTDB). Copyright Province of Nova Scotia. All rights reserved. Service Nova Scotia & Municipal Relations, Nova Scotia Geomatics Centre, 160 Willow St., Amherst, Nova Scotia. Species status and locations data from Atlantic Canada Conservation Data Centre.

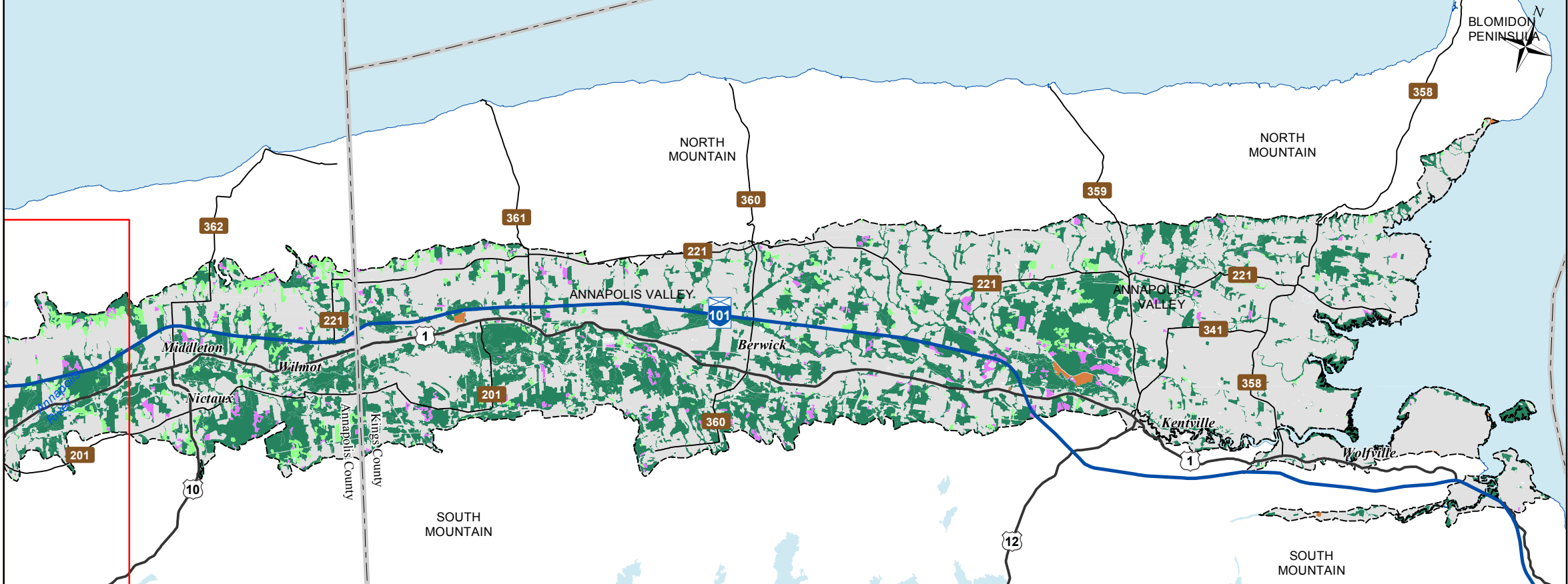
Additional information derived from Nova Scotia Department of Natural Resources, Geographic Information Systems (GIS) databases.

**Disclaimer**

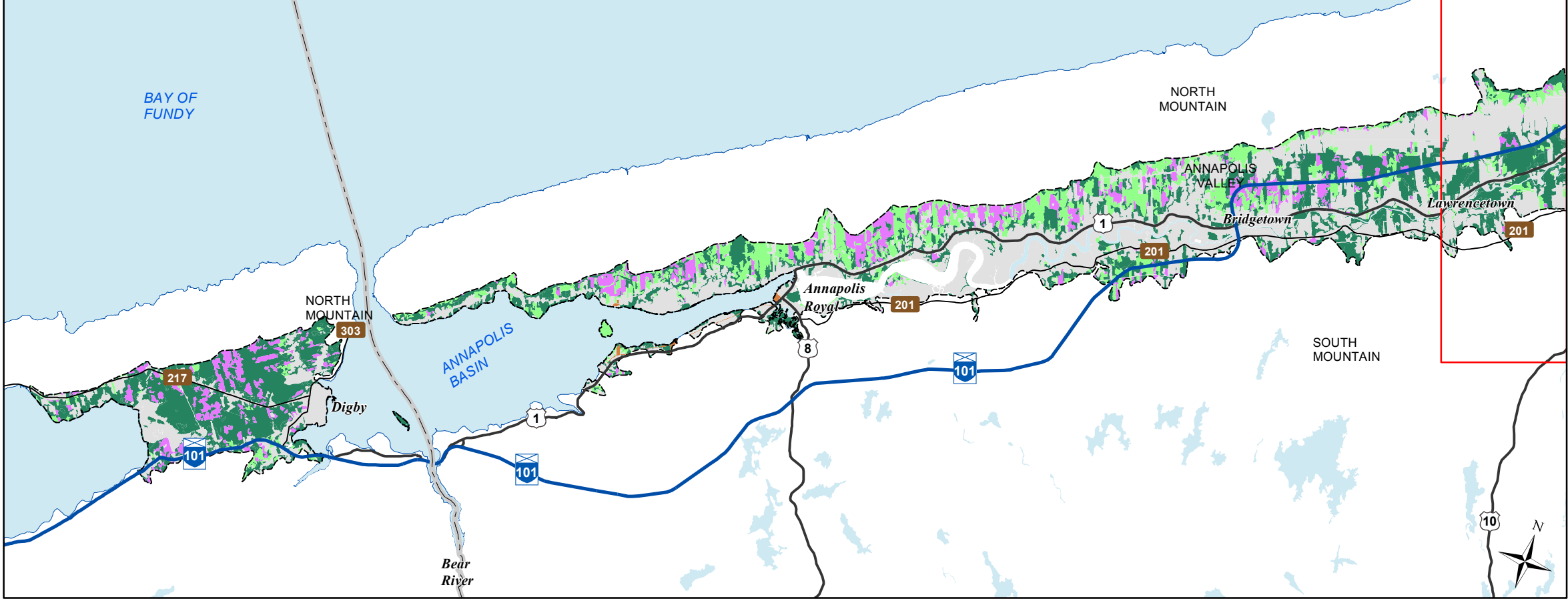
The information on this map may have come from a variety of government and non-government sources and is subject to change without notice. The Nova Scotia Department of Natural Resources accepts no liability for any errors, deficiencies, or fault on this map.



West



East



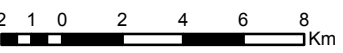
# Ecological Landscape Analysis

## Map 3

### Ecological Emphasis Classes

Annapolis Valley - Ecodistrict 610

- Legend**
- Ecodistrict Boundary
  - Reserve
  - Extensive
  - Intensive
  - Converted
  - Unclassified
  - Water



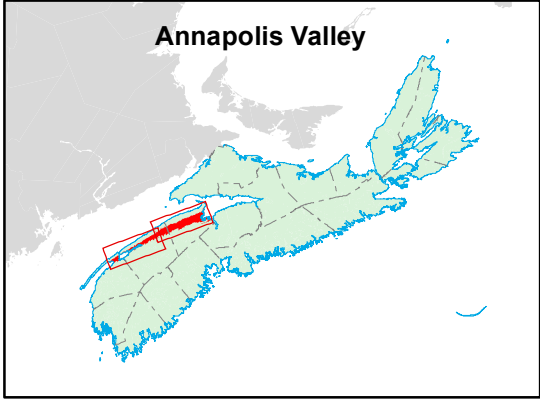
**Map Notes**

Base data derived from the Nova Scotia Topographic Database (NSTDB). Copyright Province of Nova Scotia. All rights reserved. Service Nova Scotia & Municipal Relations, Nova Scotia Geomatics Centre, 160 Willow St., Amherst, Nova Scotia. Species status and locations data from Atlantic Canada Conservation Data Centre.

Additional information derived from Nova Scotia Department of Natural Resources, Geographic Information Systems (GIS) databases.

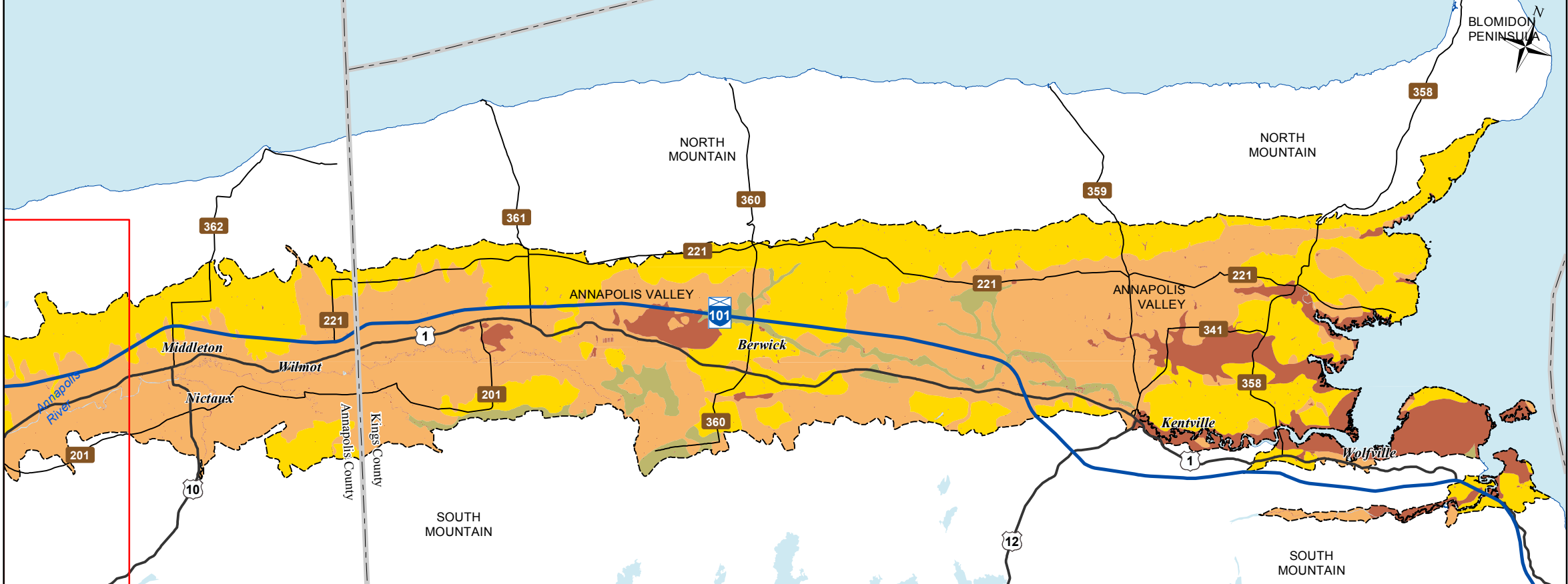
**Disclaimer**

The information on this map may have come from a variety of government and non-government sources and is subject to change without notice. The Nova Scotia Department of Natural Resources accepts no liability for any errors, deficiencies, or faults on this map.

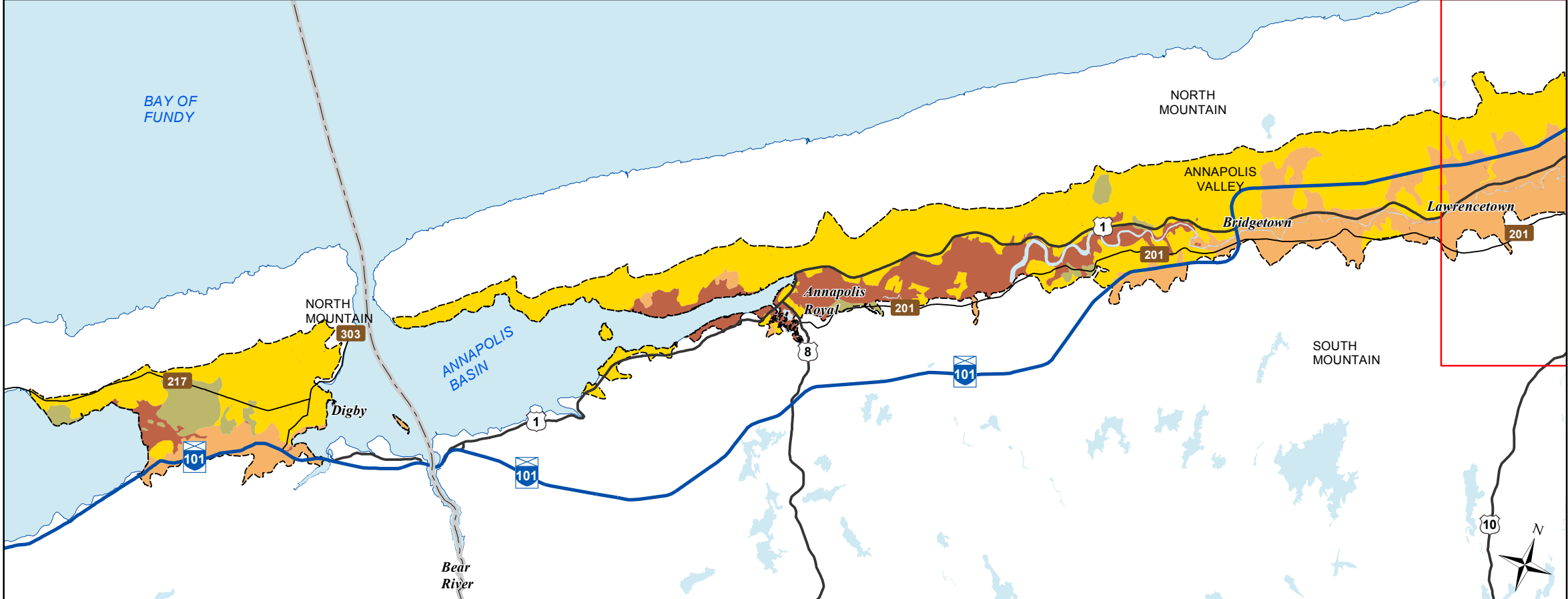




West



East



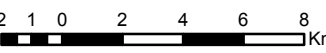
# Ecological Landscape Analysis

## Map 4

### Natural Disturbances

Annapolis Valley - Ecodistrict 610

- Legend**
- Ecodistrict Boundary
  - Frequent
  - Gap
  - Infrequent
  - Open Seral
  - Water



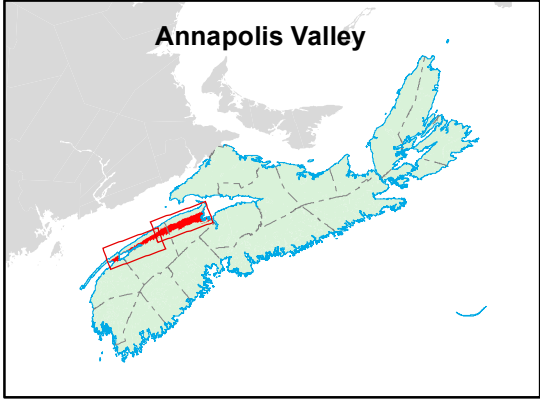
**Map Notes**

Base data derived from the Nova Scotia Topographic Database (NSTDB). Copyright Province of Nova Scotia. All rights reserved. Service Nova Scotia & Municipal Relations, Nova Scotia Geomatics Centre, 160 Willow St., Amherst, Nova Scotia. Species status and locations data from Atlantic Canada Conservation Data Centre.

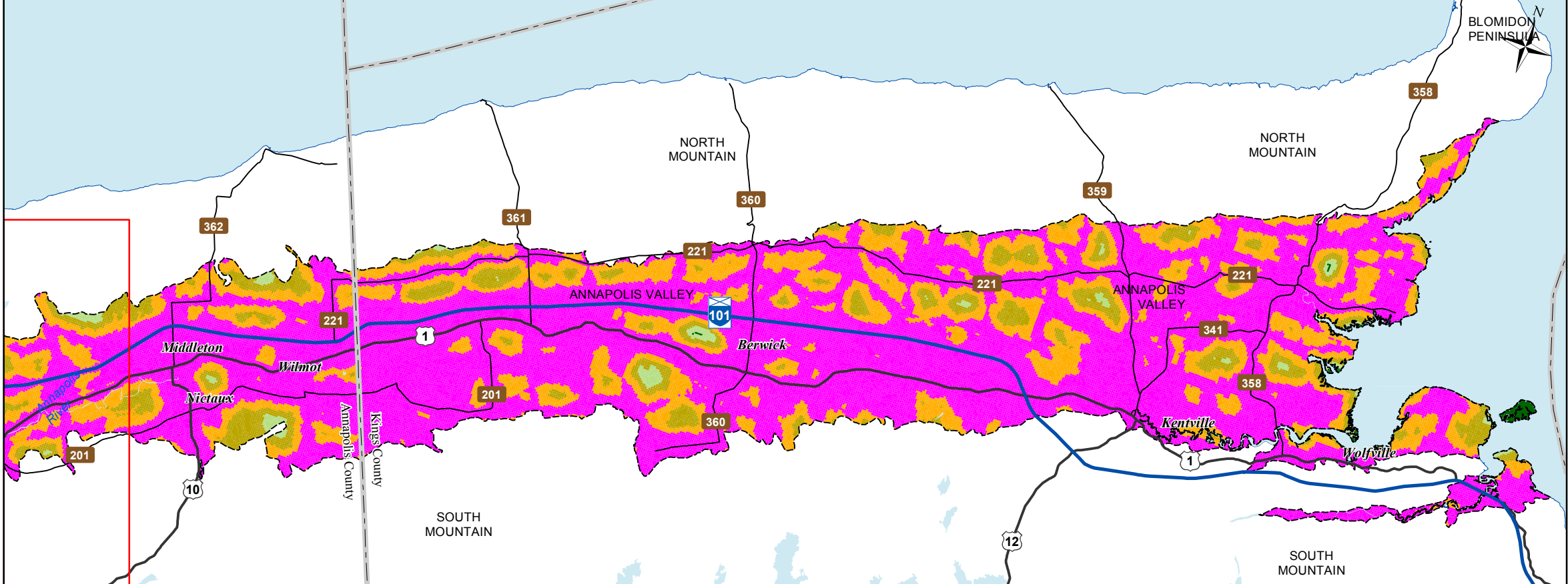
Additional information derived from Nova Scotia Department of Natural Resources, Geographic Information Systems (GIS) databases.

**Disclaimer**

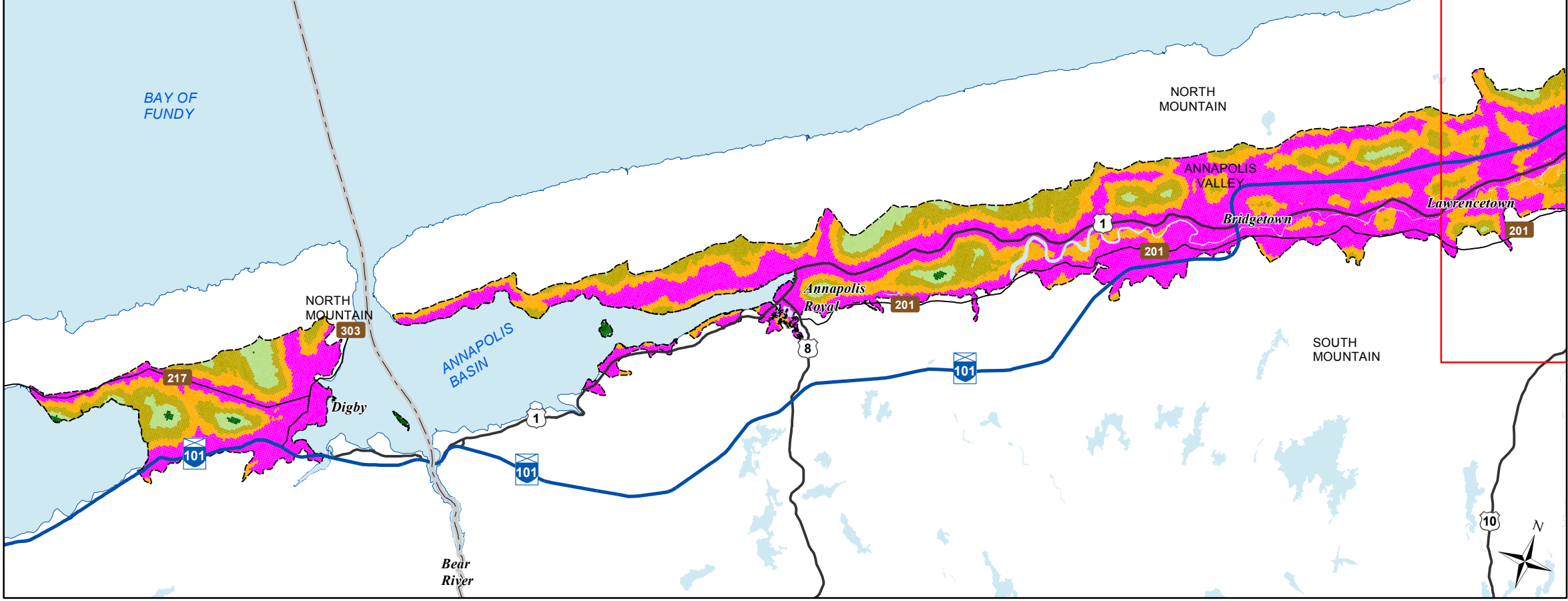
The information on this map may have come from a variety of government and non-government sources and is subject to change without notice. The Nova Scotia Department of Natural Resources accepts no liability for any errors, deficiencies, or faults on this map.



West



East



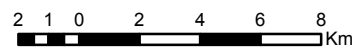
# Ecological Landscape Analysis

## Map 5

### Road Index

Annapolis Valley - Ecodistrict 610

- Legend**
- Ecodistrict Boundary
  - Remote
  - Forest Resource
  - Mixed Rural
  - Agriculture Suburban
  - Urban
  - Water



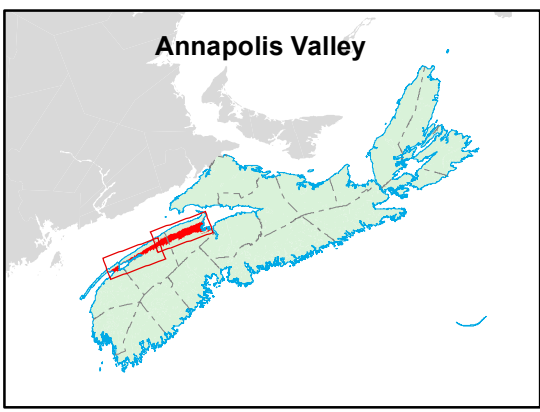
**Map Notes**

Base data derived from the Nova Scotia Topographic Database (NSTDB). Copyright Province of Nova Scotia. All rights reserved. Service Nova Scotia & Municipal Relations, Nova Scotia Geomatics Centre, 160 Willow St., Amherst, Nova Scotia. Species status and locations data from Atlantic Canada Conservation Data Centre.

Additional information derived from Nova Scotia Department of Natural Resources, Geographic Information Systems (GIS) databases.

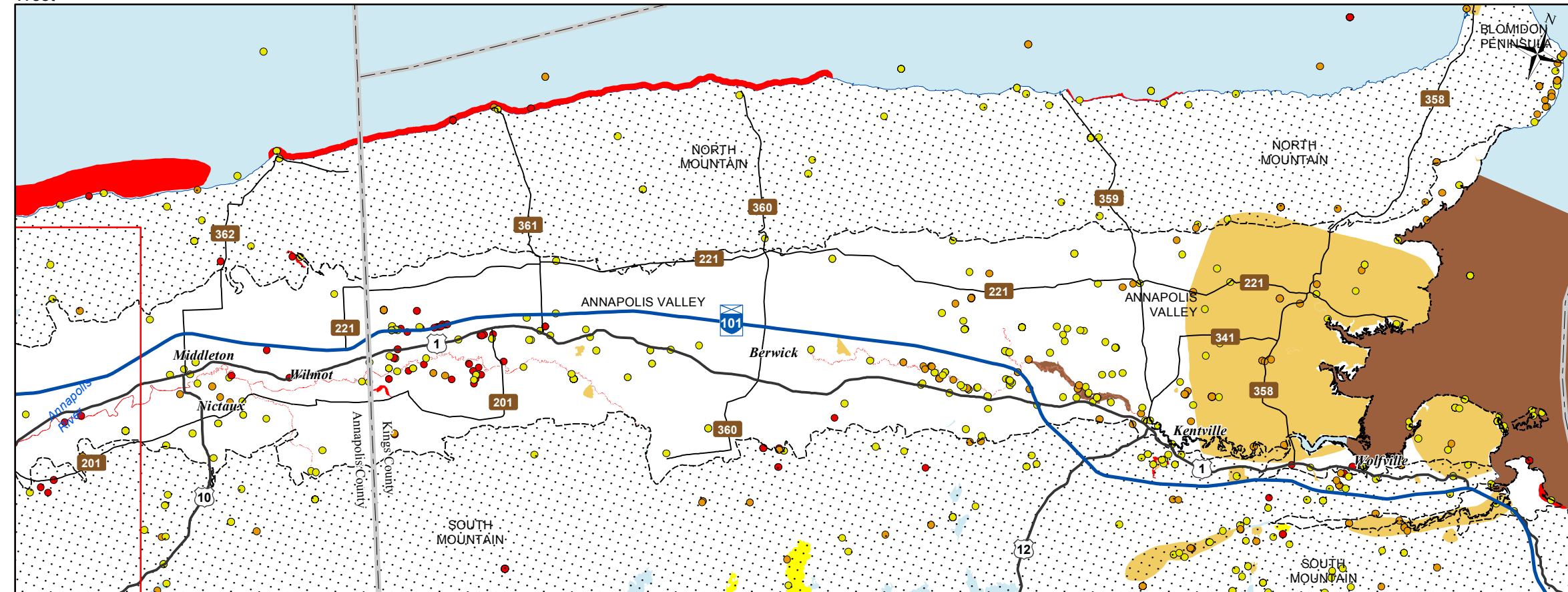
**Disclaimer**

The information on this map may have come from a variety of government and non-government sources and is subject to change without notice. The Nova Scotia Department of Natural Resources accepts no liability for any errors, deficiencies, or faults on this map.

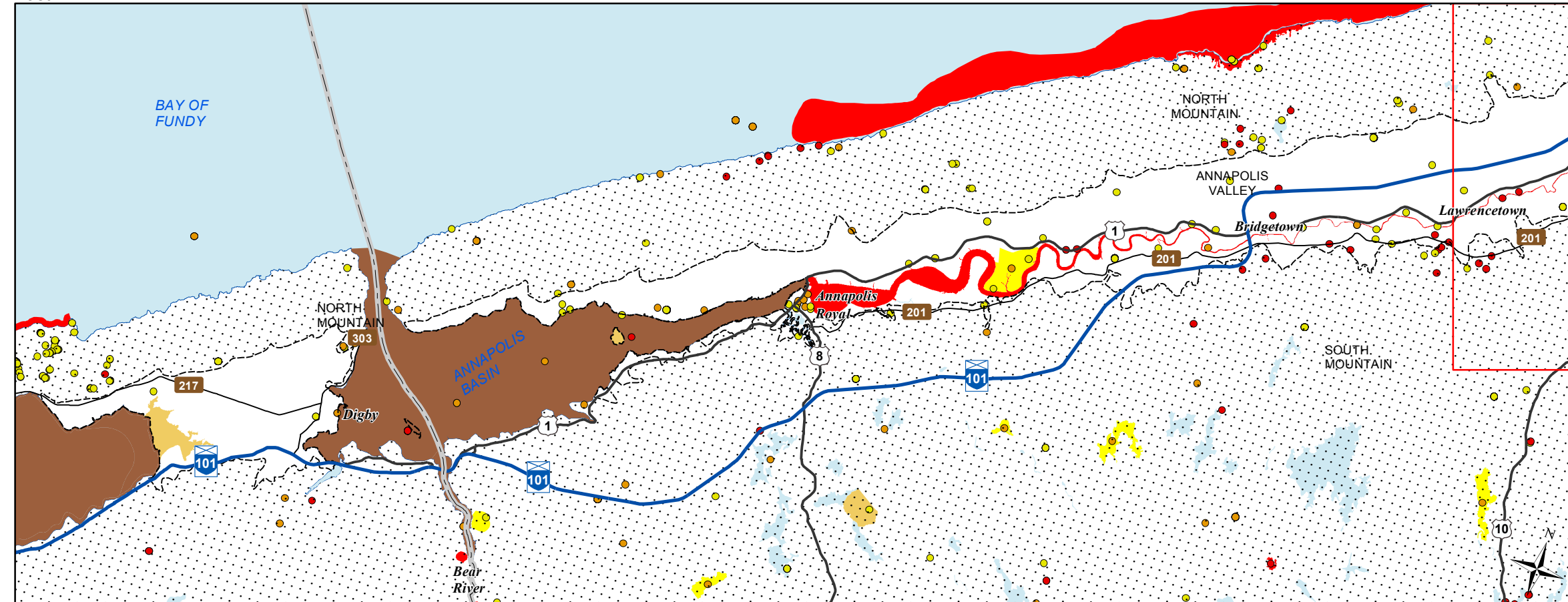




West



East



Date: 6/26/2015

## Ecological Landscape Analysis Map 6 Special Occurrences - Species

Annapolis Valley - Ecodistrict 610

### Legend

- Ecodistrict Boundary
- Outside Ecodistrict
- Other Occurrences (Point of Interest)
- At Risk
- May Be At Risk
- Sensitive
- Species at risk
- Species of conservation concern
- Deer wintering
- Migratory bird
- Other significant habitat
- Water

2 1 0 2 4 6 8 Km

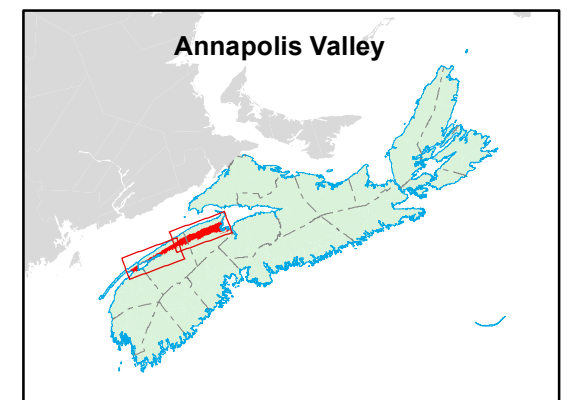
### Map Notes

Base data derived from the Nova Scotia Topographic Database (NSTDB). Copyright Province of Nova Scotia. All rights reserved. Service Nova Scotia & Municipal Relations, Nova Scotia Geomatics Centre, 160 Willow St., Amherst, Nova Scotia. Species status and locations data from Atlantic Canada Conservation Data Centre.

Additional information derived from Nova Scotia Department of Natural Resources, Geographic Information Systems (GIS) databases.

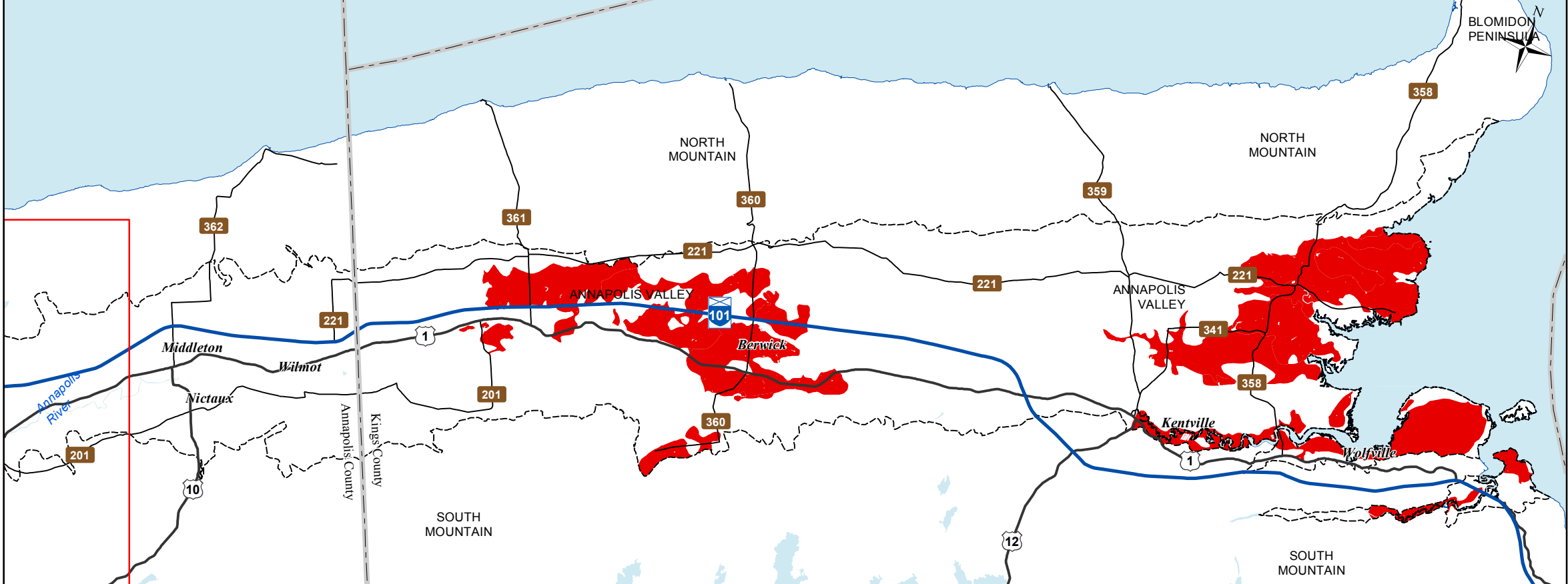
### Disclaimer

The information on this map may have come from a variety of government and non-government sources and is subject to change without notice. The Nova Scotia Department of Natural Resources accepts no liability for any errors, deficiencies, or faults on this map.

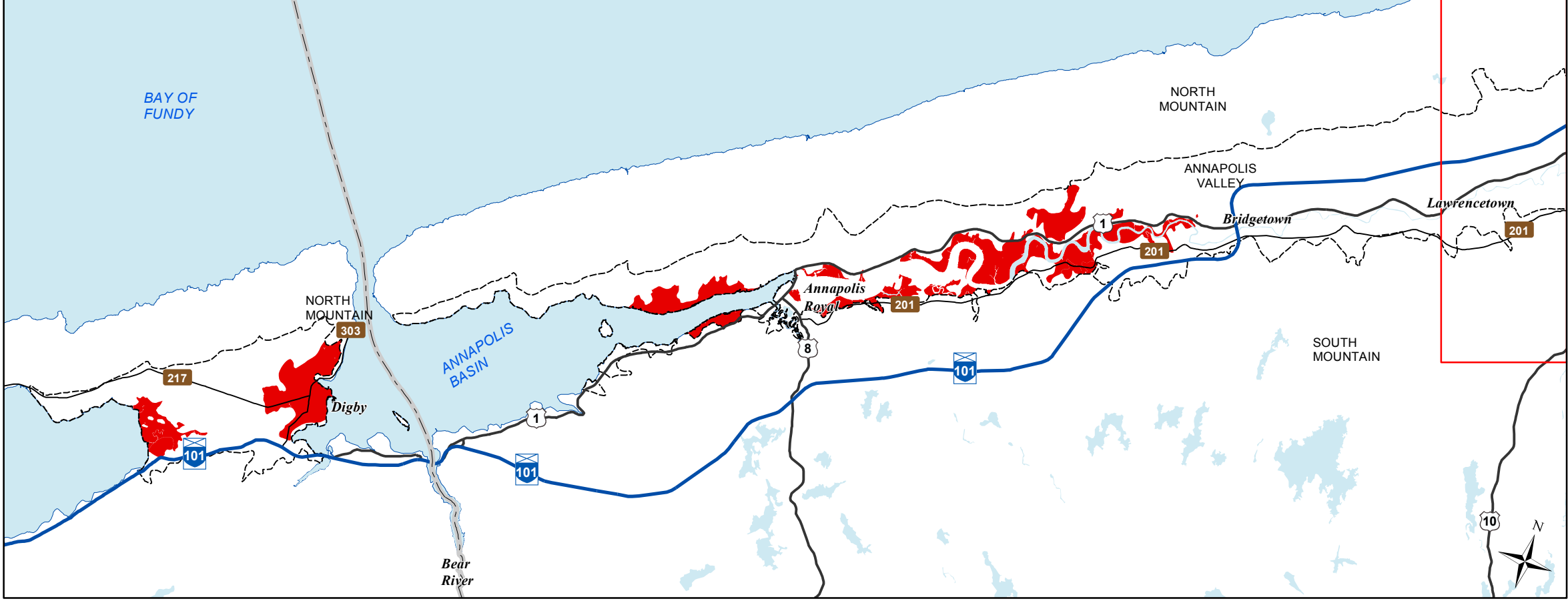


NOVA SCOTIA

West

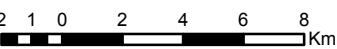


East



**Ecological Landscape Analysis**  
**Map 7**  
**Rare Ecosections**  
Annapolis Valley - Ecodistrict 610

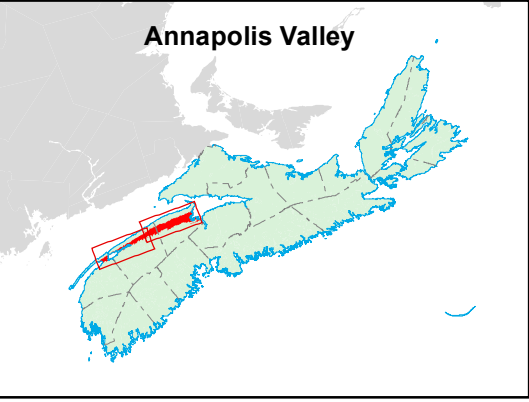
- Legend**
- Ecodistrict Boundary
  - Rare Ecosections
  - Water



**Map Notes**  
Base data derived from the Nova Scotia Topographic Database (NSTDB). Copyright Province of Nova Scotia. All rights reserved. Service Nova Scotia & Municipal Relations, Nova Scotia Geomatics Centre, 160 Willow St., Amherst, Nova Scotia. Species status and locations data from Atlantic Canada Conservation Data Centre.

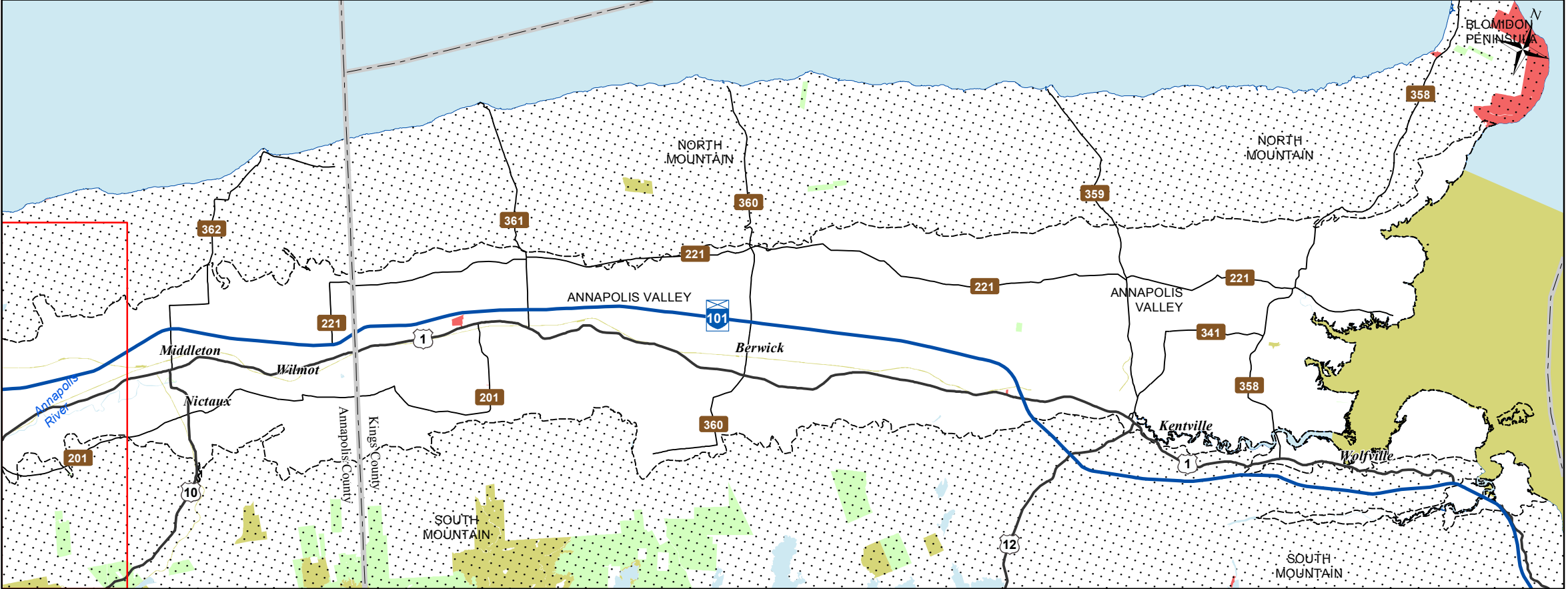
Additional information derived from Nova Scotia Department of Natural Resources, Geographic Information Systems (GIS) databases.

**Disclaimer**  
The information on this map may have come from a variety of government and non-government sources and is subject to change without notice. The Nova Scotia Department of Natural Resources accepts no liability for any errors, deficiencies, or faults on this map.

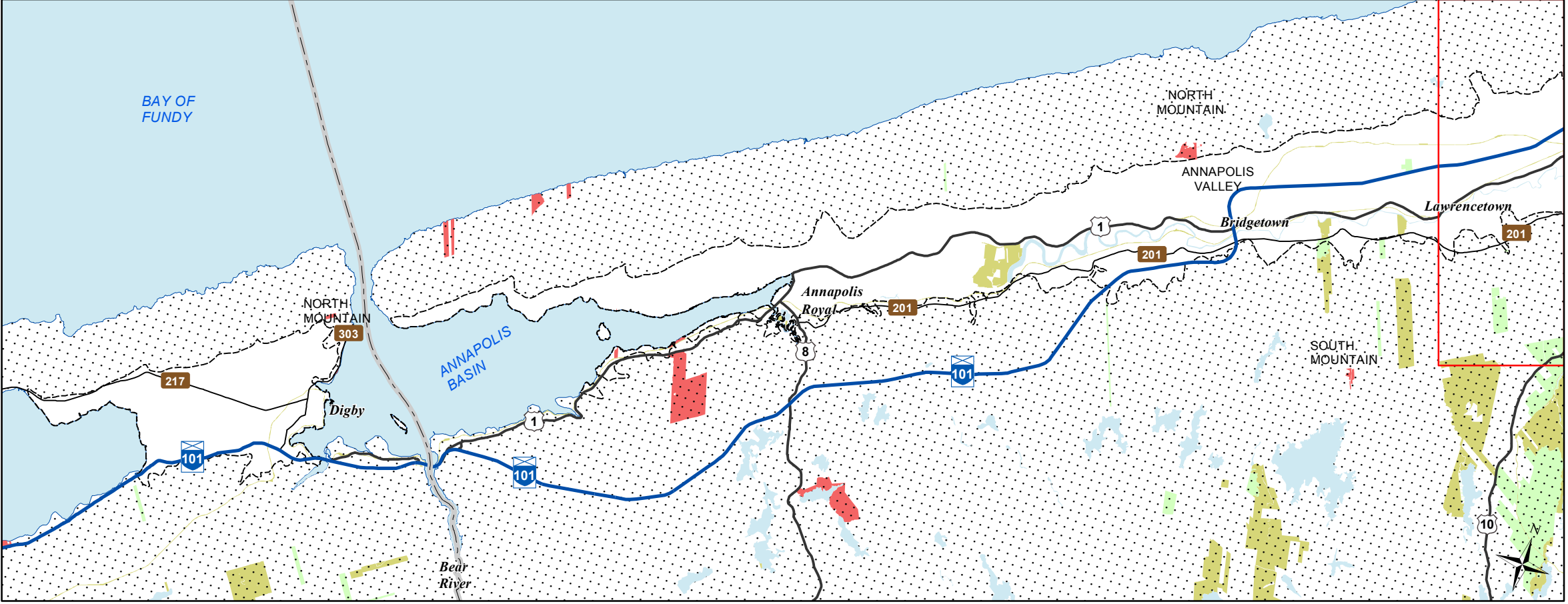




West



East



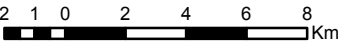
Date: 6/26/2015

**Ecological Landscape Analysis**  
**Map 8**  
**IRM Classes**

Annapolis Valley - Ecodistrict 610

**Legend**

- Ecodistrict Boundary
- C1 - General Resource Use
- C2 - Multiple and Adaptive Resource Use
- C3 - Protected and Limited Use
- Water



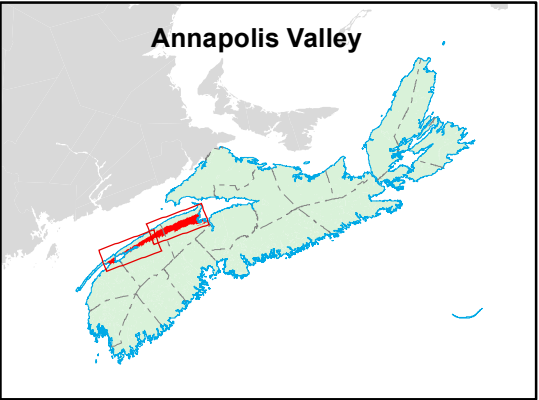
**Map Notes**

Base data derived from the Nova Scotia Topographic Database (NSTDB). Copyright Province of Nova Scotia. All rights reserved. Service Nova Scotia & Municipal Relations, Nova Scotia Geomatics Centre, 160 Willow St., Amherst, Nova Scotia. Species status and locations data from Atlantic Canada Conservation Data Centre.

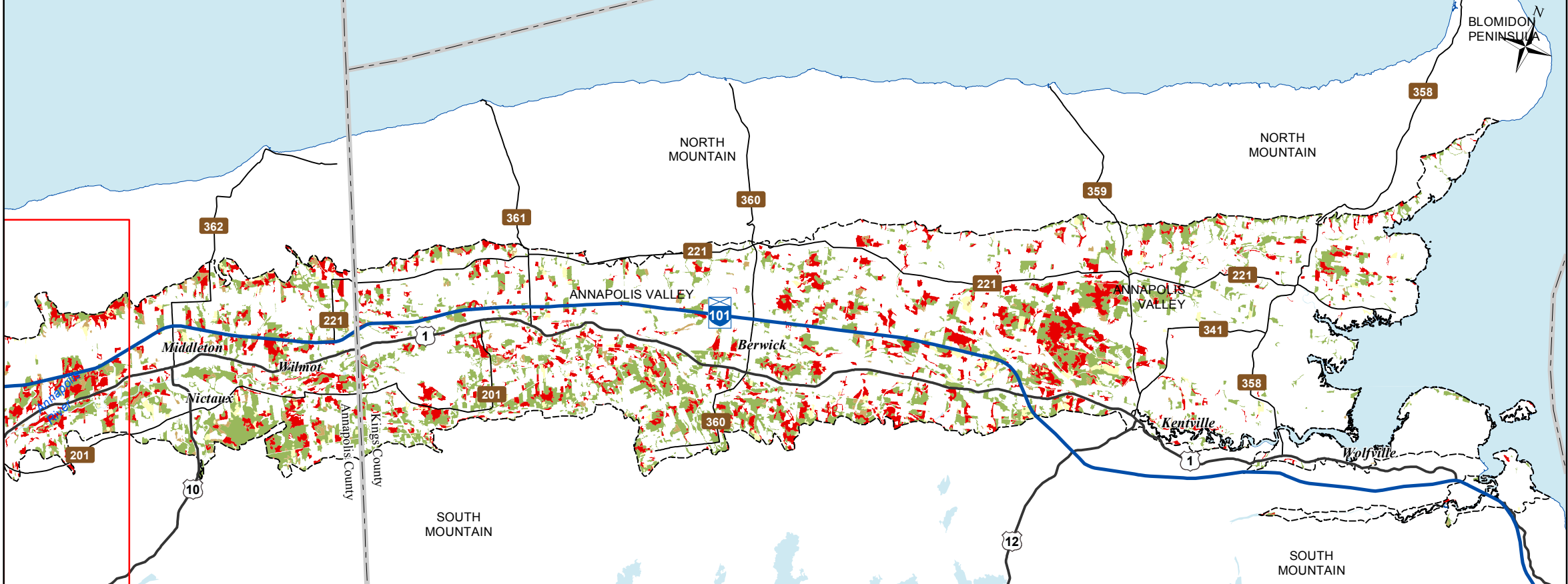
Additional information derived from Nova Scotia Department of Natural Resources, Geographic Information Systems (GIS) databases.

**Disclaimer**

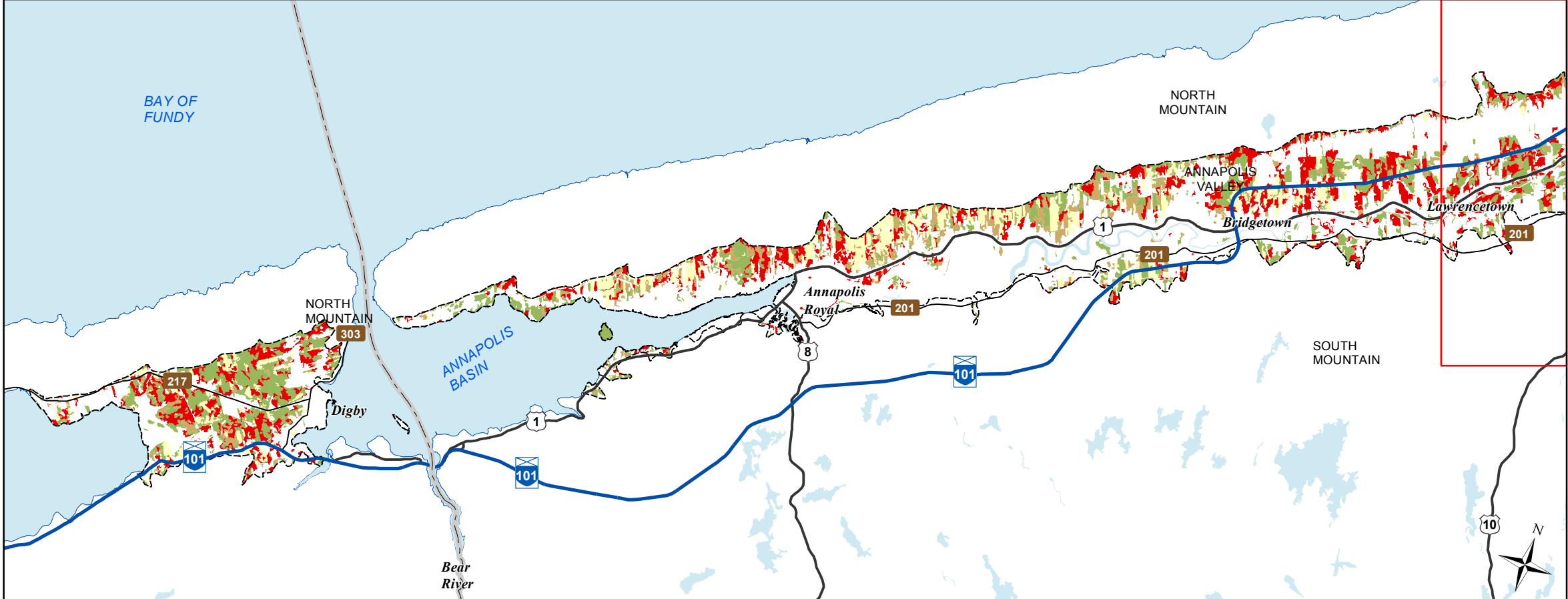
The information on this map may have come from a variety of government and non-government sources and is subject to change without notice. The Nova Scotia Department of Natural Resources accepts no liability for any errors, deficiencies, or faults on this map.



West



East



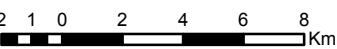
# Ecological Landscape Analysis

## Map 9

### Development Classes

Annapolis Valley - Ecodistrict 610

- Legend**
- Ecodistrict Boundary
  - Not forested
  - Establishment
  - Young Forest
  - Mature Timber
  - Multi-Aged / Old Forest
  - Water



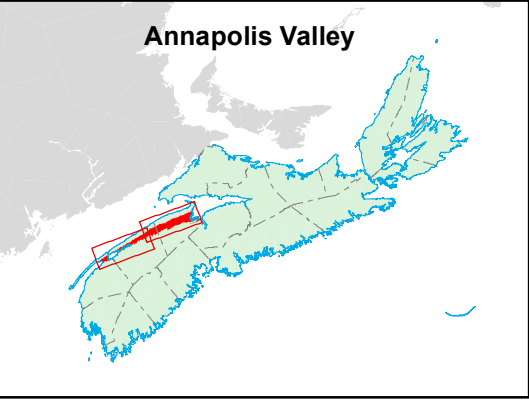
**Map Notes**

Base data derived from the Nova Scotia Topographic Database (NSTDB). Copyright Province of Nova Scotia. All rights reserved. Service Nova Scotia & Municipal Relations, Nova Scotia Geomatics Centre, 160 Willow St., Amherst, Nova Scotia. Species status and locations data from Atlantic Canada Conservation Data Centre.

Additional information derived from Nova Scotia Department of Natural Resources, Geographic Information Systems (GIS) databases.

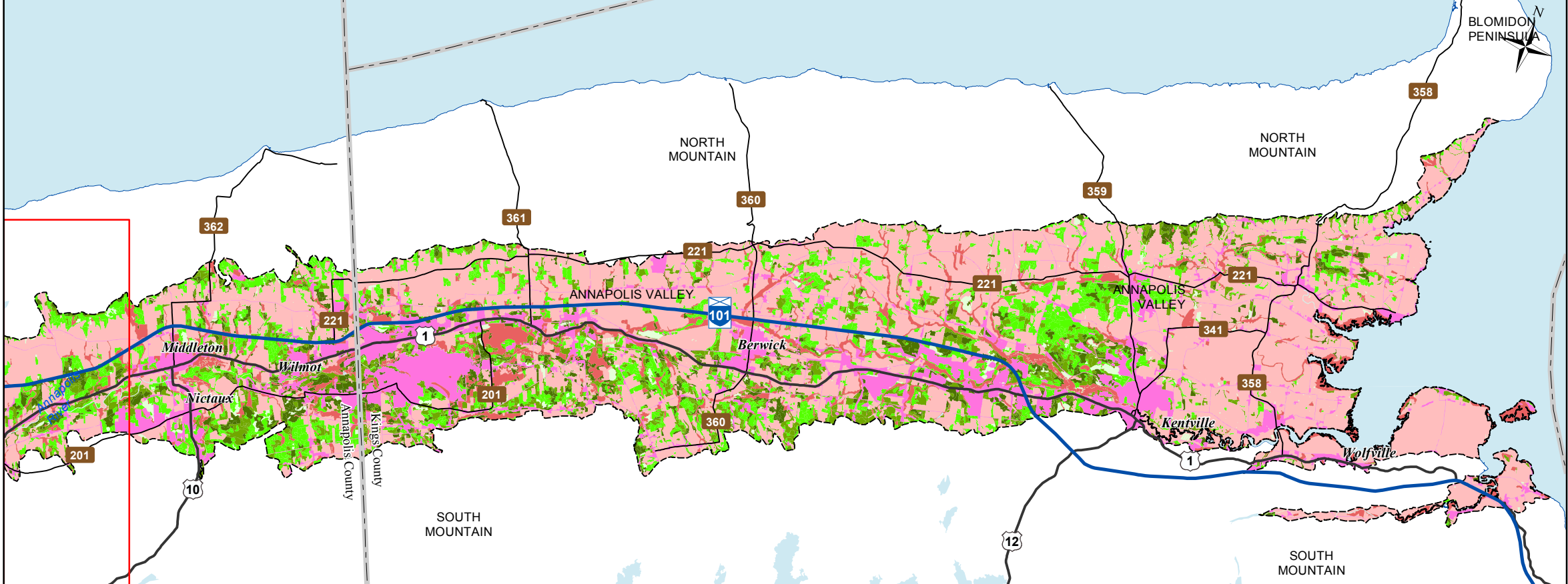
**Disclaimer**

The information on this map may have come from a variety of government and non-government sources and is subject to change without notice. The Nova Scotia Department of Natural Resources accepts no liability for any errors, deficiencies, or faultson this map.

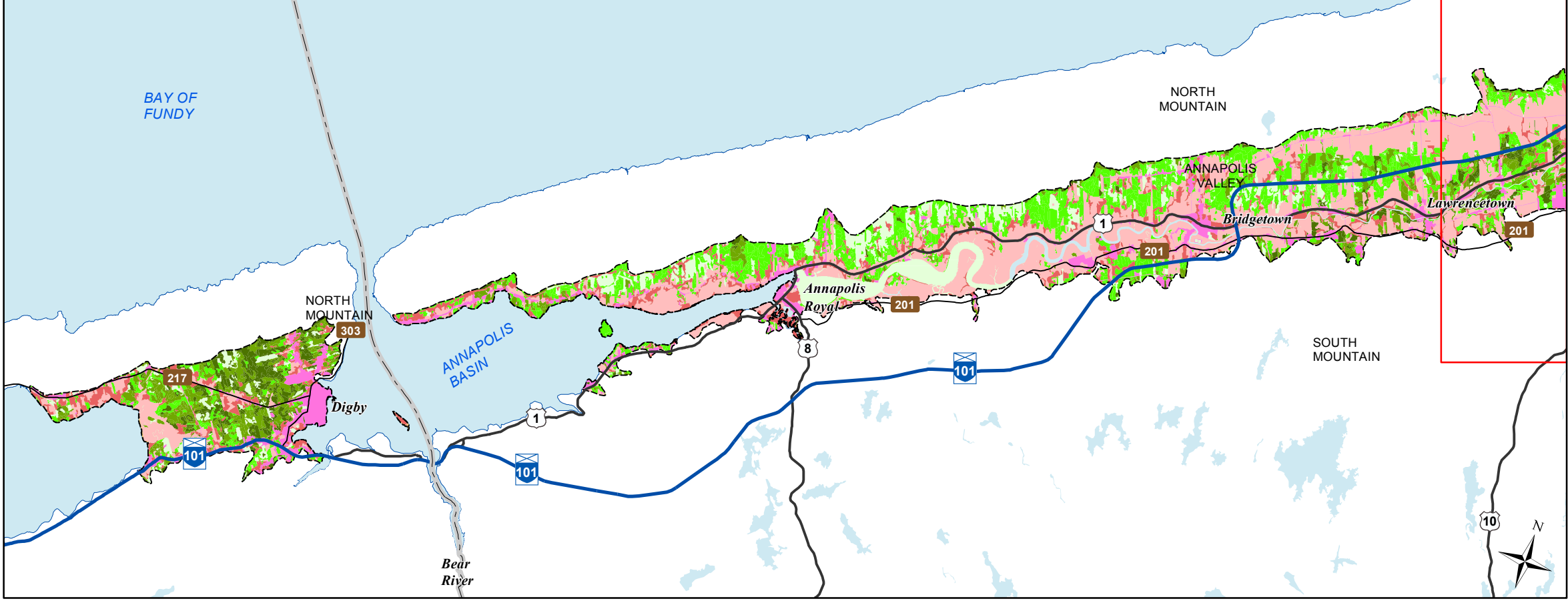




West



East



# Ecological Landscape Analysis

## Map 10

### Seral Stages

Annapolis Valley - Ecodistrict 610

#### Legend

- Ecodistrict Boundary
  - Ecological Land Cover**
    - Agriculture and Developed Vegetation
    - Shrublands and Herbaceous Vegetation
    - Sparse Vegetation and Naturally Unvegetated
    - Urban/Industrial Vegetation and Unvegetated
  - Seral Stage**
    - Unclassified (e.g. recent cut)
    - Early
    - Mid
    - Late
    - Water
- 2 1 0 2 4 6 8 Km

#### Map Notes

Base data derived from the Nova Scotia Topographic Database (NSTDB). Copyright Province of Nova Scotia. All rights reserved. Service Nova Scotia & Municipal Relations, Nova Scotia Geomatics Centre, 160 Willow St., Amherst, Nova Scotia. Species status and locations data from Atlantic Canada Conservation Data Centre.

Additional information derived from Nova Scotia Department of Natural Resources, Geographic Information Systems (GIS) databases.

#### Disclaimer

The information on this map may have come from a variety of government and non-government sources and is subject to change without notice. The Nova Scotia Department of Natural Resources accepts no liability for any errors, deficiencies, or faultson this map.

