

Ecological Landscape Analysis
Map A
Elements

Central Lowlands - Ecodistrict 630

Legend

- Ecodistrict Boundary
- Valley Corridors
- Floodplain
- Marshes and Grasslands
- Red and Black Spruce Hummocks
- Salt Marshes
- Spruce Pine Flats
- Tolerant Hardwood Drumlins and Hummocks
- Tolerant Mixedwood Hills
- Tolerant Mixedwood Hummocks
- Wetlands
- Water



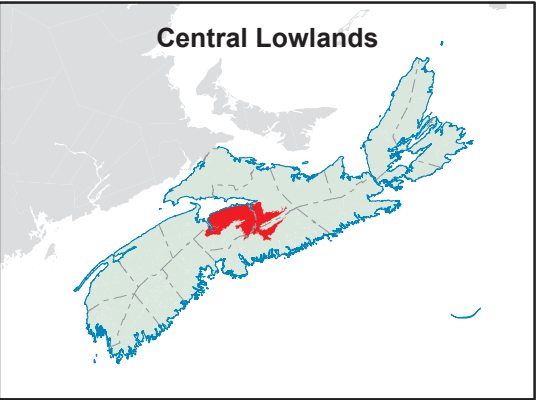
Map Notes

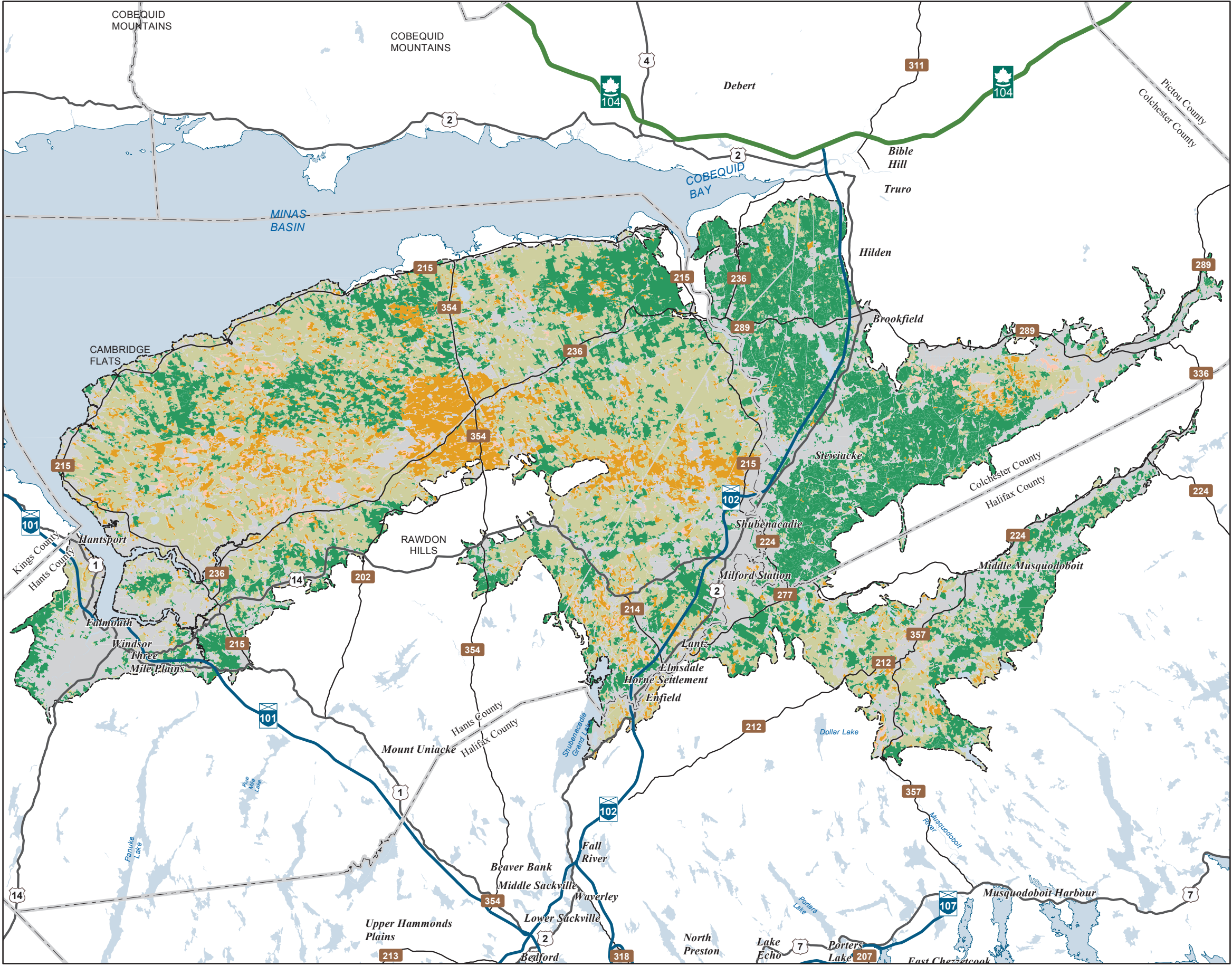
Base data derived from the Nova Scotia Topographic Database (NSTDB). Copyright Province of Nova Scotia. All rights reserved. The NSTDB is available from Service Nova Scotia & Municipal Relations, Nova Scotia Geomatics Centre, 160 Willow St., Amherst, Nova Scotia.

Additional information derived from Nova Scotia Department of Natural Resources, Geographic Information Systems (GIS) databases.

Disclaimer

The information on this map may have come from a variety of government and non-government sources and is subject to change without notice. The Nova Scotia Department of Natural Resources accepts no liability for any errors, deficiencies, or faults on this map.





Ecological Landscape Analysis
Map 1
Land Capability
Central Lowlands - Ecodistrict 630

Legend

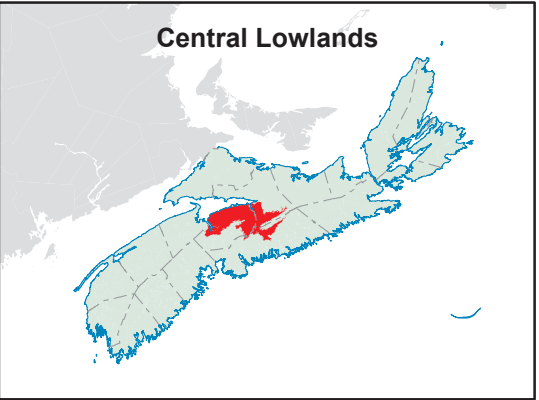
- Ecodistrict Boundary
- 0 (No capability/converted)
- 1 - 3 (Low)
- 4 - (Low - Medium)
- 5 - (Medium)
- 6+ - (High)
- Water

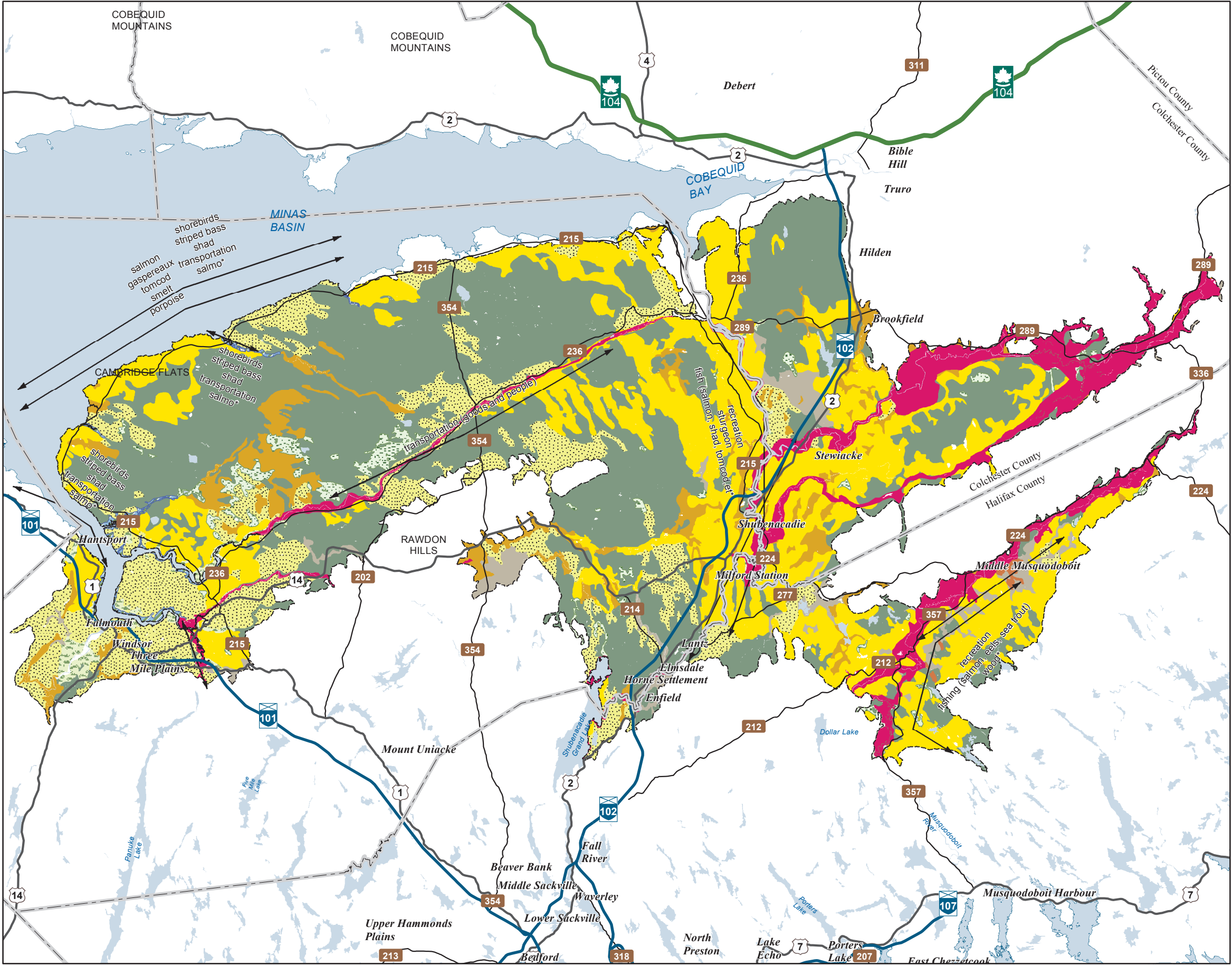


Map Notes
Base data derived from the Nova Scotia Topographic Database (NSTDB). Copyright Province of Nova Scotia. All rights reserved. The NSTDB is available from Service Nova Scotia & Municipal Relations, Nova Scotia Geomatics Centre, 160 Willow St., Amherst, Nova Scotia.

Additional information derived from Nova Scotia Department of Natural Resources, Geographic Information Systems (GIS) databases.

Disclaimer
The information on this map may have come from a variety of government and non-government sources and is subject to change without notice. The Nova Scotia Department of Natural Resources accepts no liability for any errors, deficiencies, or fault on this map.





Ecological Landscape Analysis
Map 2
Elements and Flows

Central Lowlands - Ecodistrict 630

Legend

- Ecodistrict Boundary
- Flows
- Floodplain
- Marshes and Grasslands
- Red and Black Spruce Hummocks
- Salt Marshes
- Spruce Pine Flats
- Tolerant Hardwood Drumlins and Hummocks
- Tolerant Mixedwood Hills
- Tolerant Mixedwood Hummocks
- Wetlands
- Valley Corridors
- Water



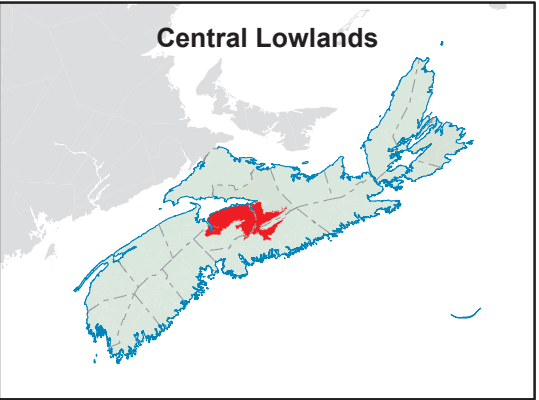
Map Notes

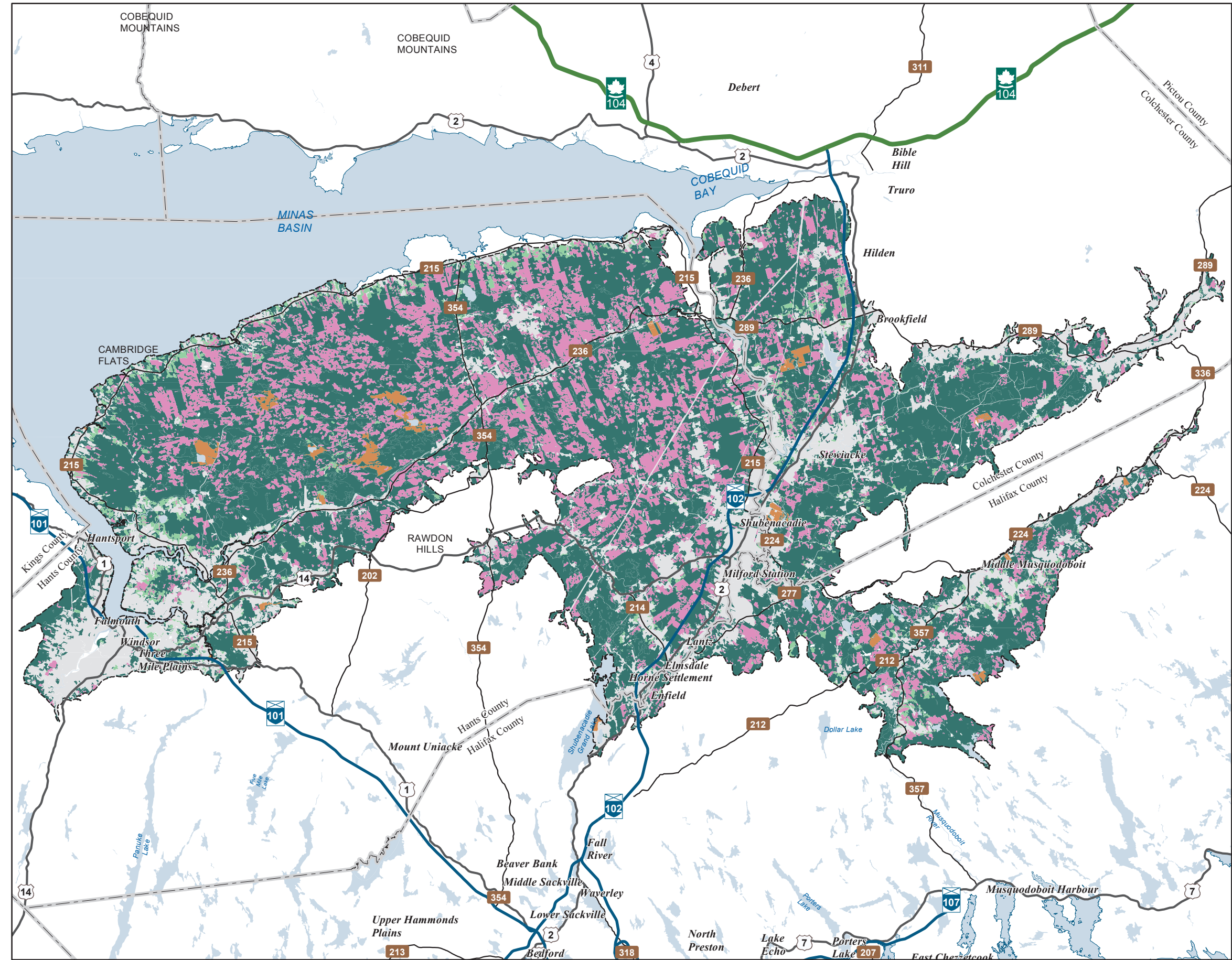
Base data derived from the Nova Scotia Topographic Database (NSTDB). Copyright Province of Nova Scotia. All rights reserved. The NSTDB is available from Service Nova Scotia & Municipal Relations, Nova Scotia Geomatics Centre, 160 Willow St., Amherst, Nova Scotia.

Additional information derived from Nova Scotia Department of Natural Resources, Geographic Information Systems (GIS) databases.

Disclaimer

The information on this map may have come from a variety of government and non-government sources and is subject to change without notice. The Nova Scotia Department of Natural Resources accepts no liability for any errors, deficiencies, or faults on this map.





Ecological Landscape Analysis
Map 3
Ecological Emphasis Classes

Central Lowlands - Ecodistrict 630

Legend

- Ecodistrict Boundary
- Reserve
- Extensive
- Intensive
- Converted
- Unclassified
- Water



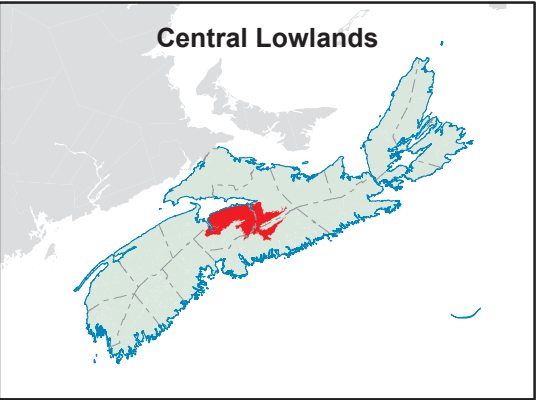
Map Notes

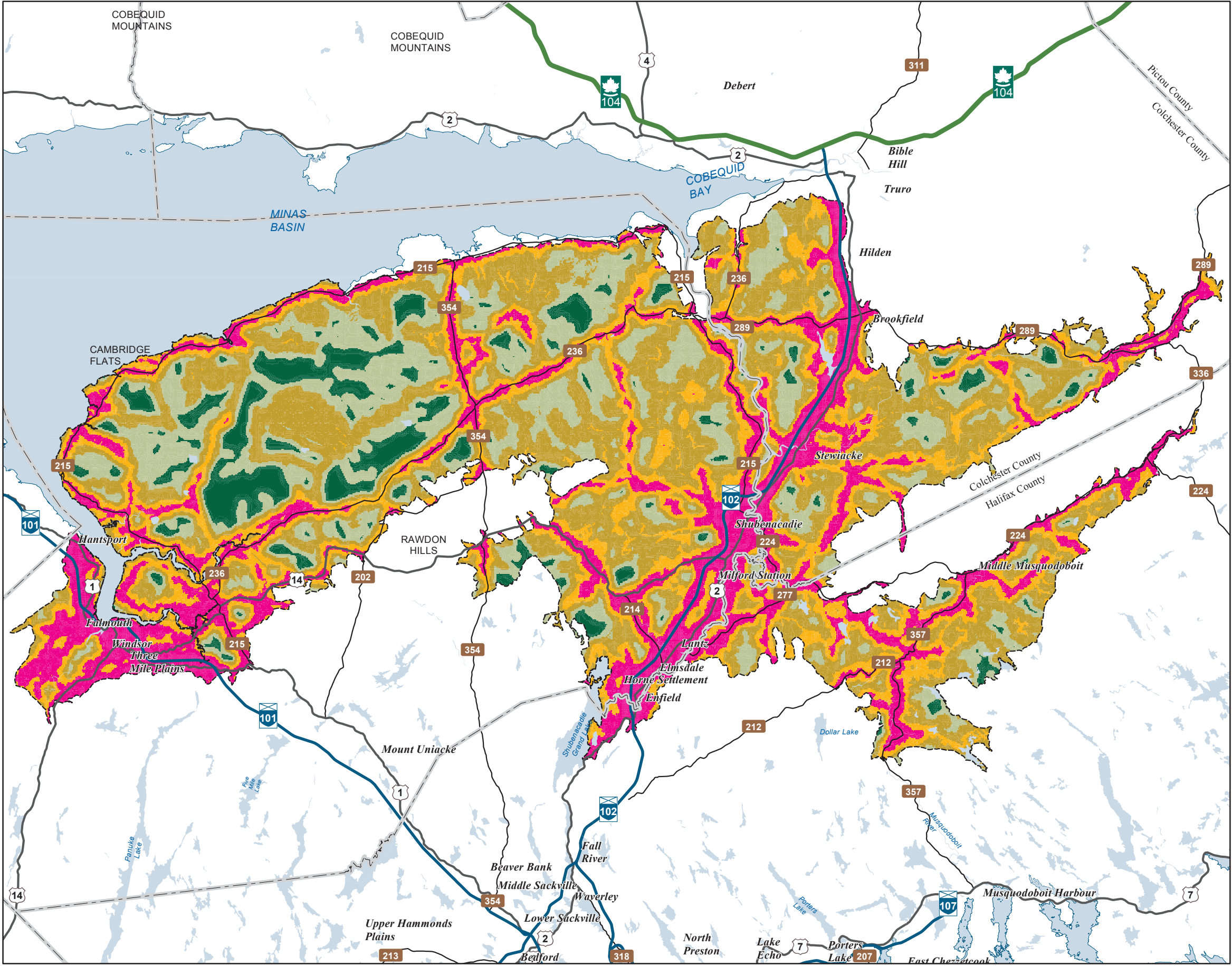
Base data derived from the Nova Scotia Topographic Database (NSTDB). Copyright Province of Nova Scotia. All rights reserved. The NSTDB is available from Service Nova Scotia & Municipal Relations, Nova Scotia Geomatics Centre, 160 Willow St., Amherst, Nova Scotia.

Additional information derived from Nova Scotia Department of Natural Resources, Geographic Information Systems (GIS) databases.

Disclaimer

The information on this map may have come from a variety of government and non-government sources and is subject to change without notice. The Nova Scotia Department of Natural Resources accepts no liability for any errors, deficiencies, or fault on this map.





Ecological Landscape Analysis
Map 5
Road Index
Central Lowlands - Ecodistrict 630

Legend

- Ecodistrict Boundary
- Remote
- Forest Resource
- Mixed Rural
- Agriculture Suburban
- Urban
- Water



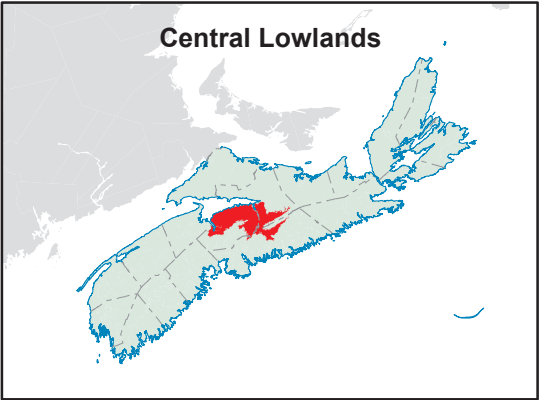
Map Notes

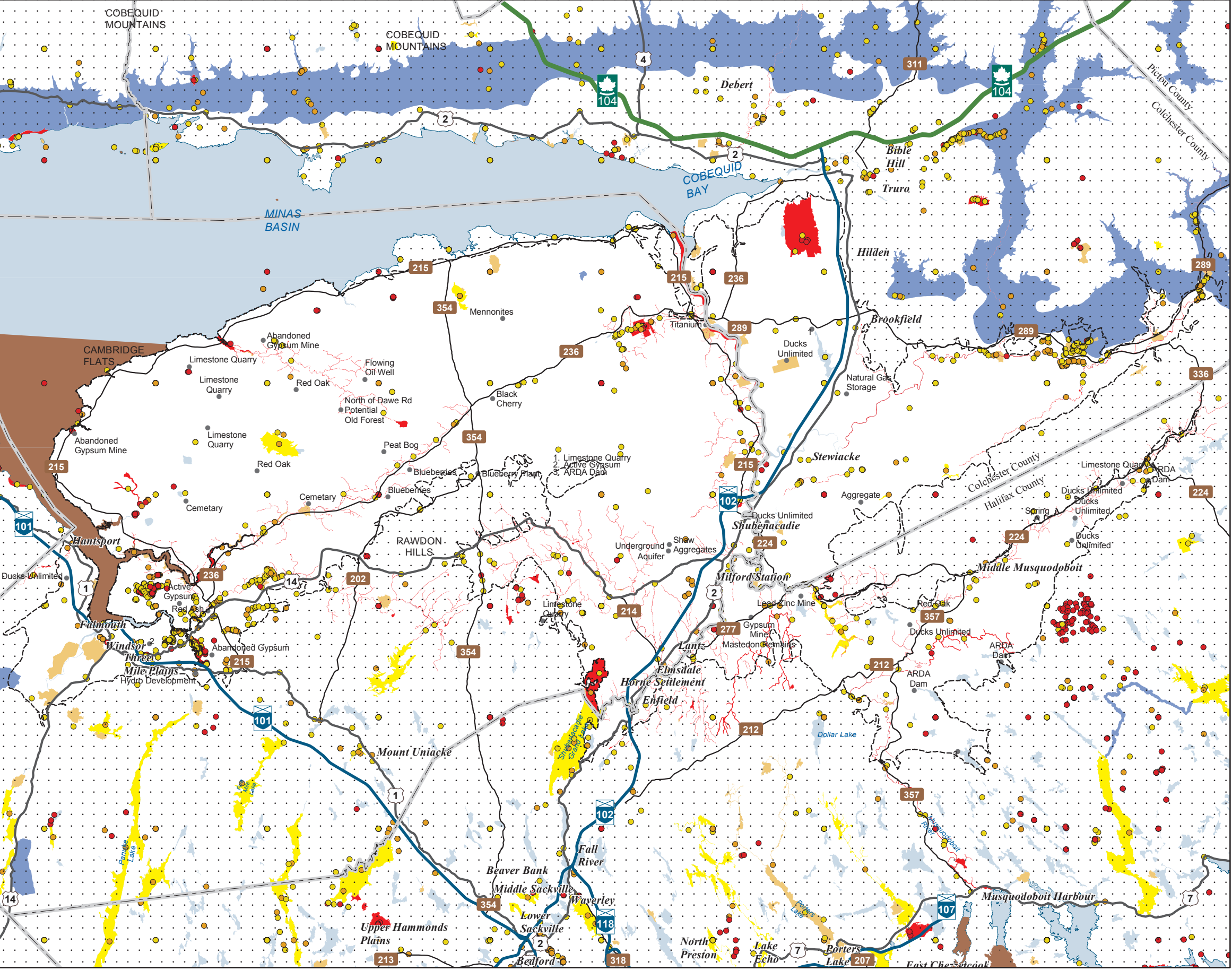
Base data derived from the Nova Scotia Topographic Database (NSTDB). Copyright Province of Nova Scotia. All rights reserved. The NSTDB is available from Service Nova Scotia & Municipal Relations, Nova Scotia Geomatics Centre, 160 Willow St., Amherst, Nova Scotia.

Additional information derived from Nova Scotia Department of Natural Resources, Geographic Information Systems (GIS) databases.

Disclaimer

The information on this map may have come from a variety of government and non-government sources and is subject to change without notice. The Nova Scotia Department of Natural Resources accepts no liability for any errors, deficiencies, or faults on this map.





Date: 6/25/2015

Ecological Landscape Analysis
Map 6
Special Occurrences - Species
Central Lowlands - Ecodistrict 630

Legend

- Ecodistrict Boundary
- Outside of Ecodistrict
- Other Occurrences (Point of Interest)

ACCDC Occurrences

- Species At Risk
- Species of Conservation Concern - May Be At Risk
- Species of Conservation Concern - Sensitive

NS DNR Significant Habitat

- Species at risk
- Species of conservation concern
- Deer wintering
- Migratory bird
- Other significant habitat
- Water

2 1 0 2 4 6 8 10 12 14 Km

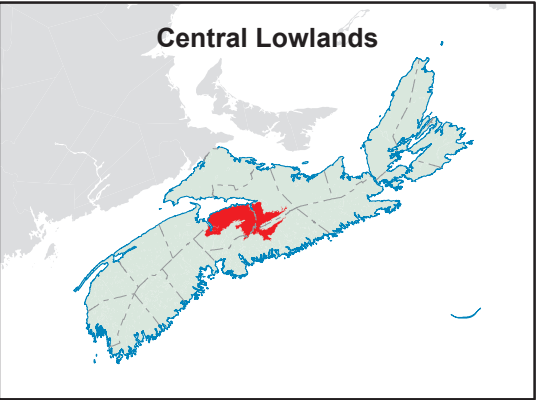
Map Notes

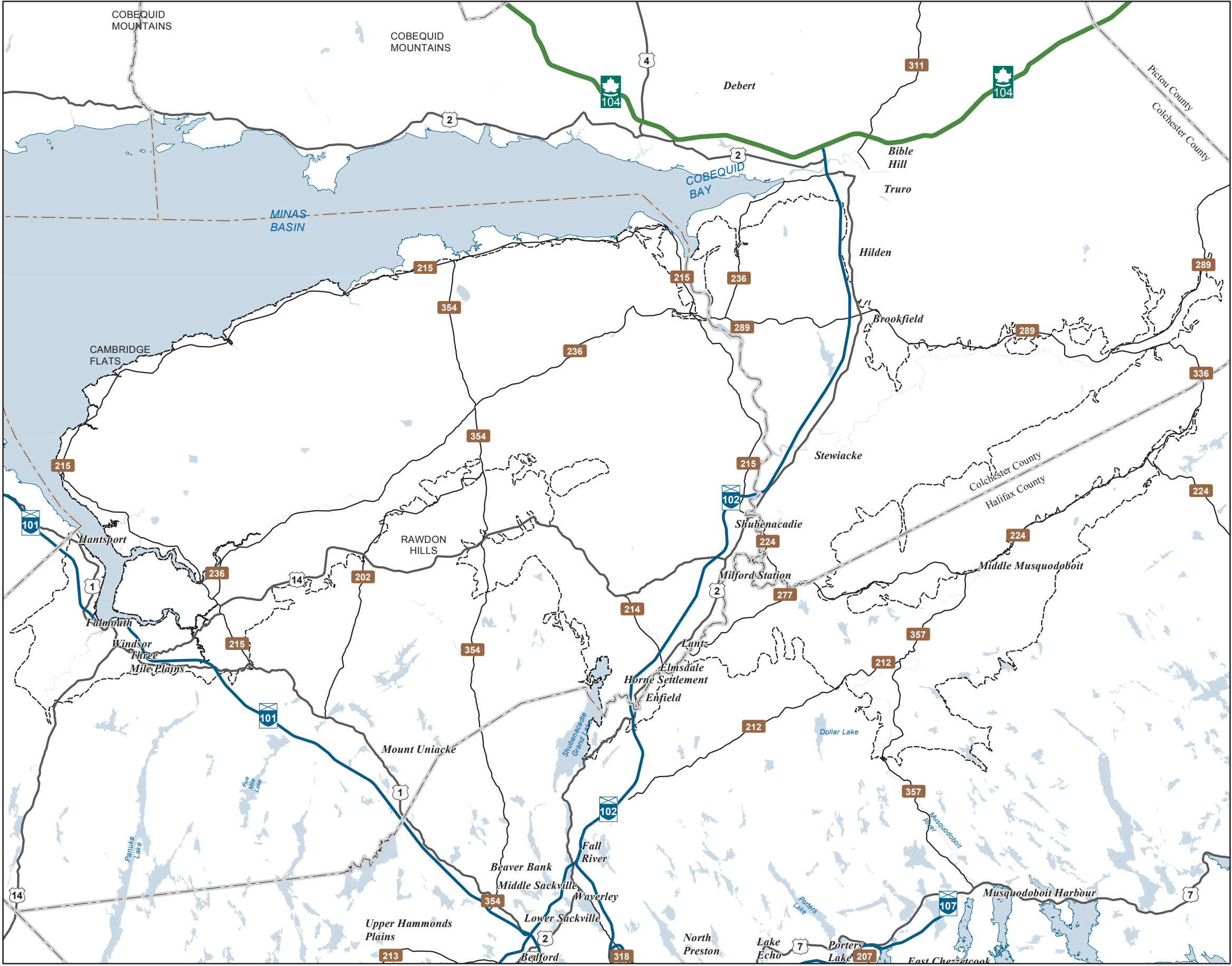
Base data derived from the Nova Scotia Topographic Database (NSTDB). Copyright Province of Nova Scotia. All rights reserved. Service Nova Scotia & Municipal Relations, Nova Scotia Geomatics Centre, 160 Willow St., Amherst, Nova Scotia. Species status and locations data from Atlantic Canada Conservation Data Centre.

Additional information derived from Nova Scotia Department of Natural Resources, Geographic Information Systems (GIS) databases.

Disclaimer

The information on this map may have come from a variety of government and non-government sources and is subject to change without notice. The Nova Scotia Department of Natural Resources accepts no liability for any errors, deficiencies, or fault on this map.





Ecological Landscape Analysis
Map 7
Rare Ecosections
Central Lowlands - Ecodistrict 630

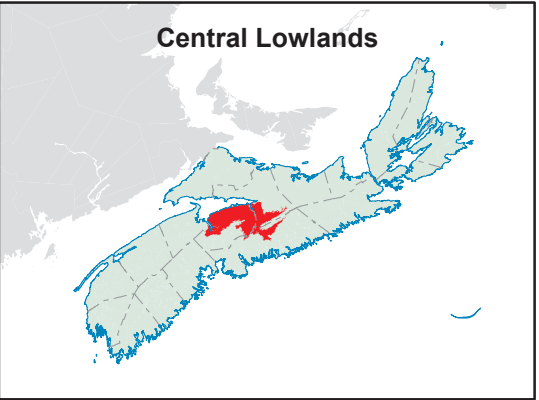
- Legend**
- Ecodistrict Boundary
 - Rare Ecosections
 - Water

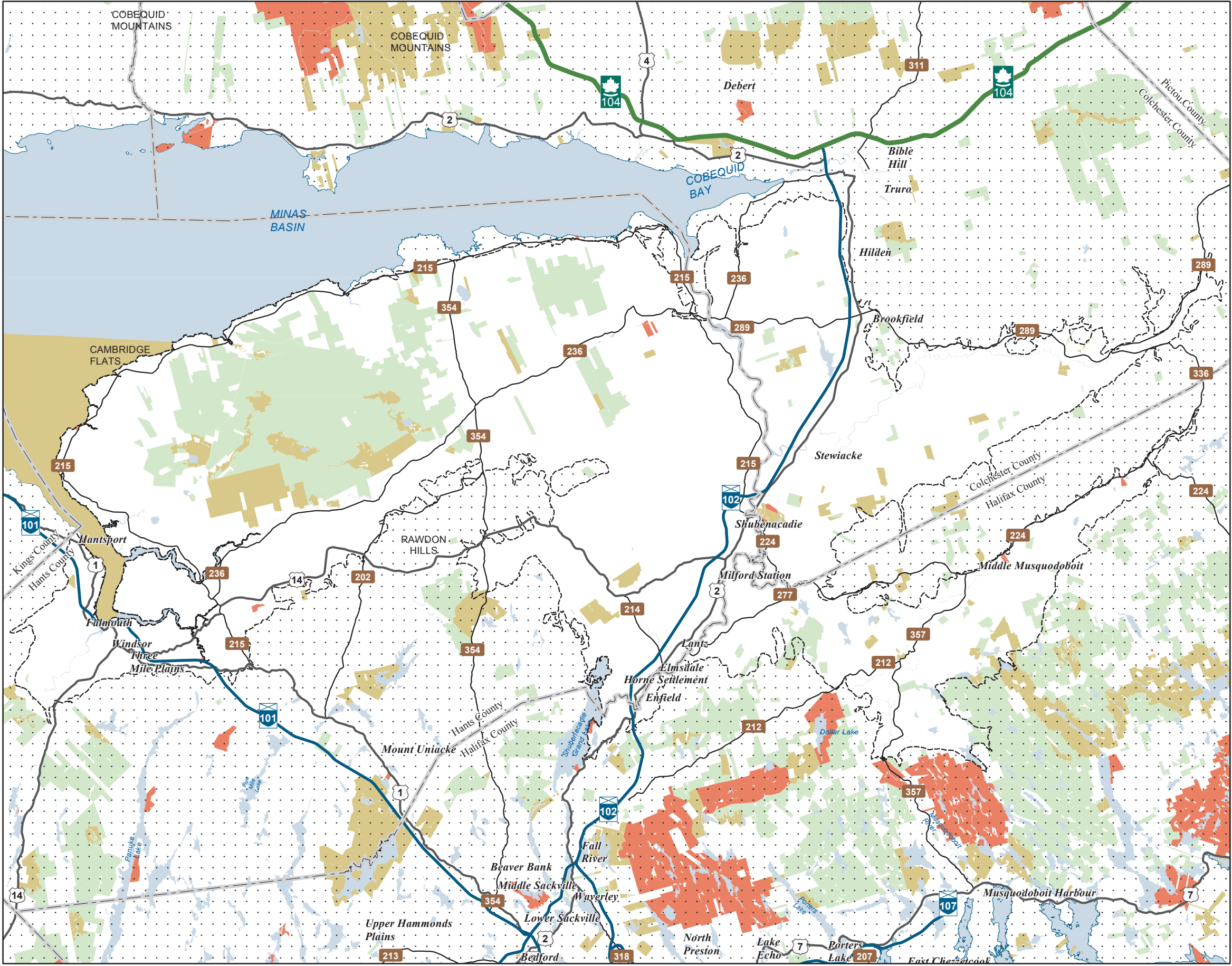


Map Notes
Base data derived from the Nova Scotia Topographic Database (NSTDB). Copyright Province of Nova Scotia. All rights reserved. The NSTDB is available from Service Nova Scotia & Municipal Relations, Nova Scotia Geomatics Centre, 160 Willow St., Amherst, Nova Scotia.

Additional information derived from Nova Scotia Department of Natural Resources, Geographic Information Systems (GIS) databases.

Disclaimer
The information on this map may have come from a variety of government and non-government sources and is subject to change without notice. The Nova Scotia Department of Natural Resources accepts no liability for any errors, deficiencies, or faults on this map.





Ecological Landscape Analysis
Map 8
IRM Classes

Central Lowlands - Ecodistrict 630

Legend

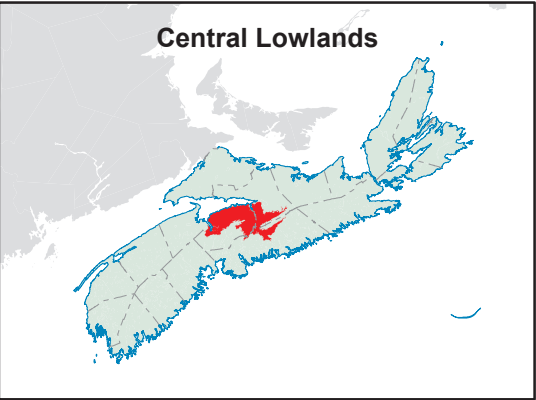
- Ecodistrict Boundary
- C1 - General Resource Use
- C2 - Multiple and Adaptive Resource Use
- C3 - Protected and Limited Use
- Water

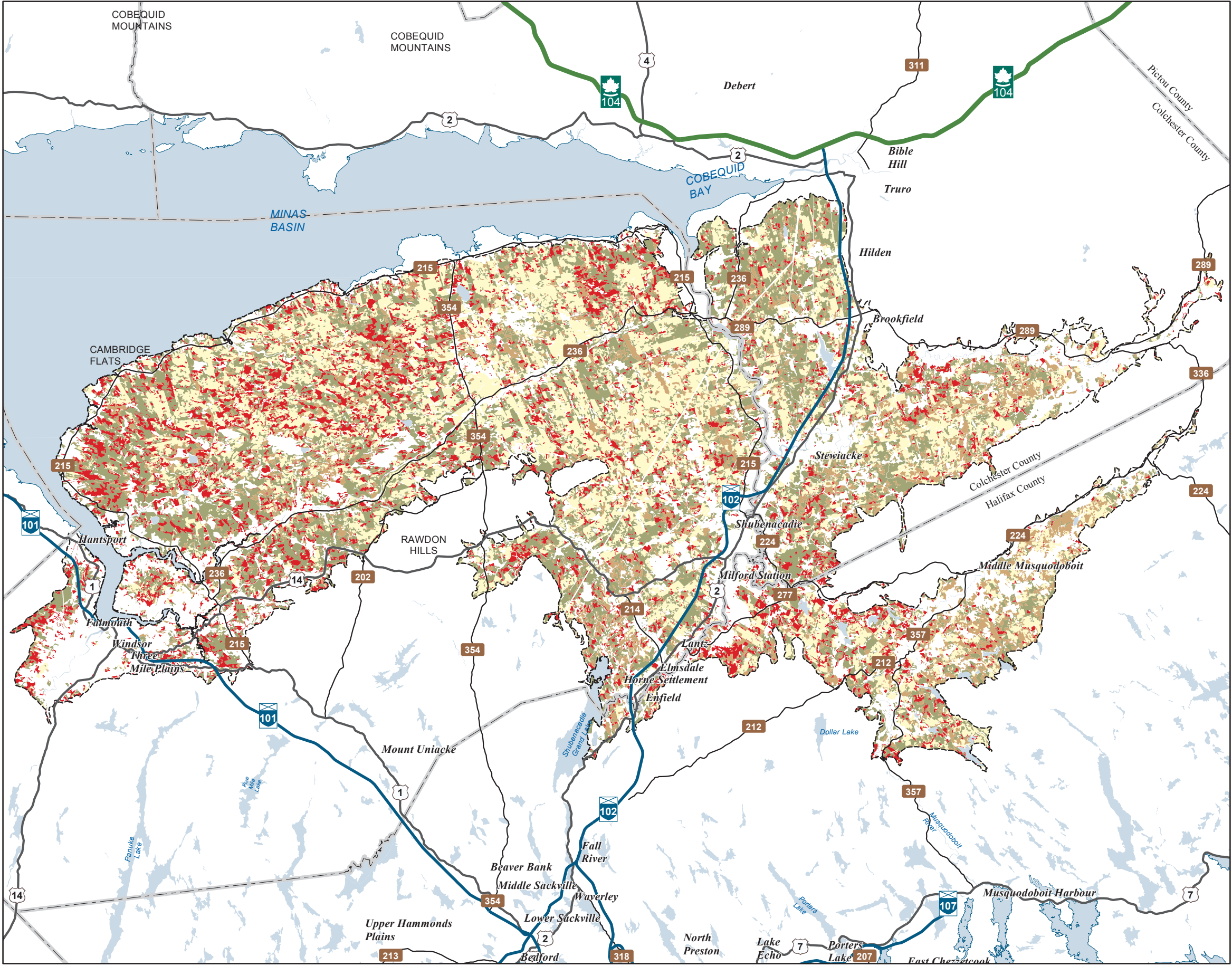


Map Notes
Base data derived from the Nova Scotia Topographic Database (NSTDB). Copyright Province of Nova Scotia. All rights reserved. The NSTDB is available from Service Nova Scotia & Municipal Relations, Nova Scotia Geomatics Centre, 160 Willow St., Amherst, Nova Scotia.

Additional information derived from Nova Scotia Department of Natural Resources, Geographic Information Systems (GIS) databases.

Disclaimer
The information on this map may have come from a variety of government and non-government sources and is subject to change without notice. The Nova Scotia Department of Natural Resources accepts no liability for any errors, deficiencies, or faults on this map.





Ecological Landscape Analysis
Map 9
Development Classes
Central Lowlands - Ecodistrict 630

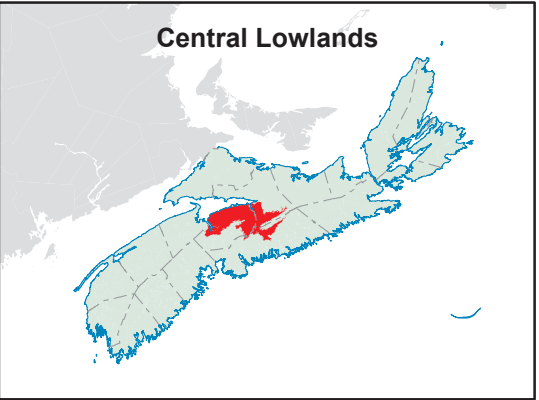
- Legend**
- Ecodistrict Boundary
 - Not forested
 - Establishment
 - Young Forest
 - Mature Timber
 - Multi-Aged / Old Forest
 - Water

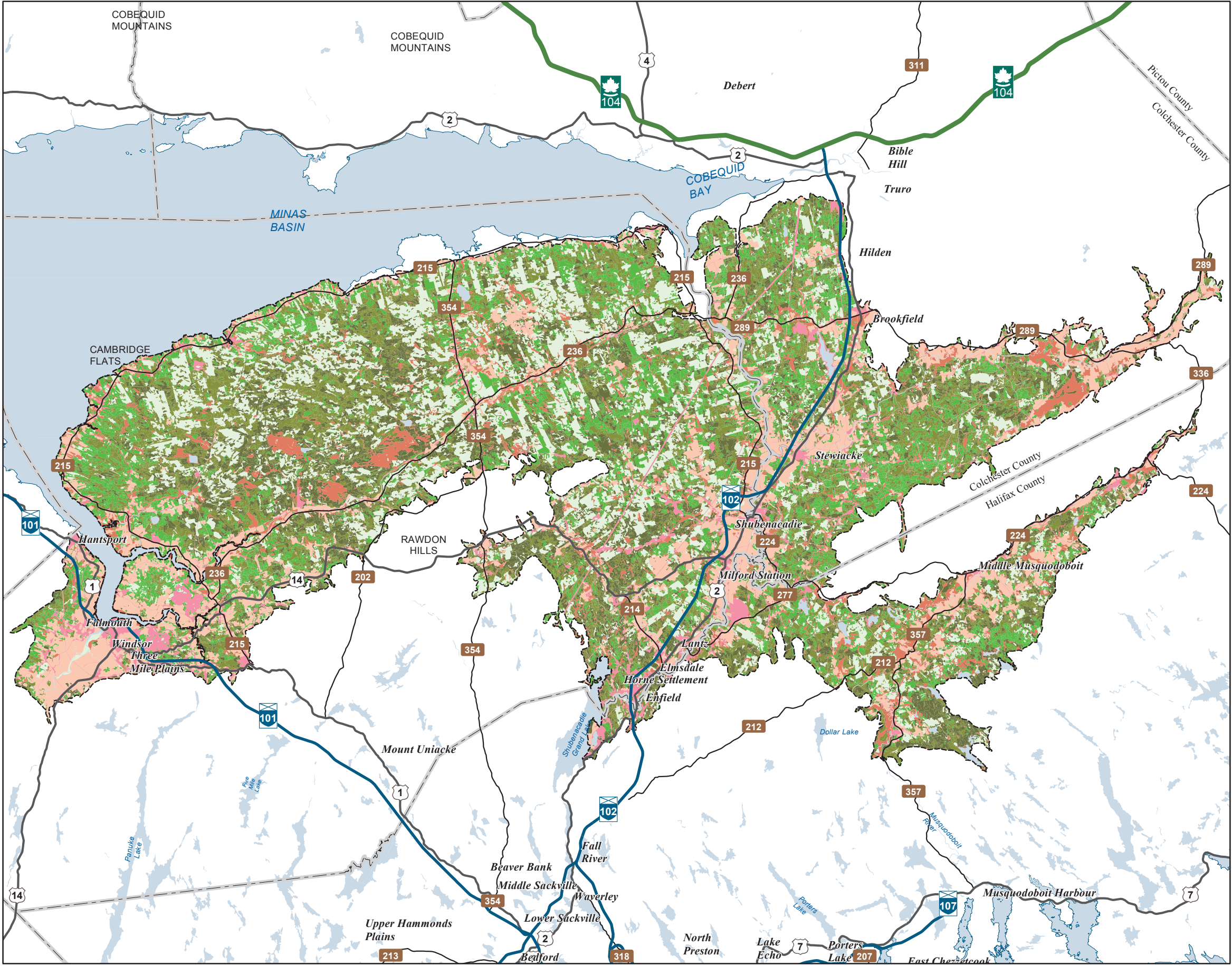


Map Notes
Base data derived from the Nova Scotia Topographic Database (NSTDB). Copyright Province of Nova Scotia. All rights reserved. The NSTDB is available from Service Nova Scotia & Municipal Relations, Nova Scotia Geomatics Centre, 160 Willow St., Amherst, Nova Scotia.

Additional information derived from Nova Scotia Department of Natural Resources, Geographic Information Systems (GIS) databases.

Disclaimer
The information on this map may have come from a variety of government and non-government sources and is subject to change without notice. The Nova Scotia Department of Natural Resources accepts no liability for any errors, deficiencies, or fault on this map.





Ecological Landscape Analysis
Map 10
Seral Stages

Central Lowlands - Ecodistrict 630

Legend

- Ecodistrict Boundary
- Ecological Land Cover**
- Agriculture and Developed Vegetation
 - Shrublands and Herbaceous Vegetation
 - Sparse Vegetation and Naturally Unvegetated
 - Urban/Industrial Vegetation and Unvegetated

- Seral Stage**
- Unclassified (e.g. recent cut)
 - Early
 - Mid
 - Late
 - Water



Map Notes

Base data derived from the Nova Scotia Topographic Database (NSTDB). Copyright Province of Nova Scotia. All rights reserved. The NSTDB is available from Service Nova Scotia & Municipal Relations, Nova Scotia Geomatics Centre, 160 Willow St., Amherst, Nova Scotia.

Additional information derived from Nova Scotia Department of Natural Resources, Geographic Information Systems (GIS) databases.

Disclaimer

The information on this map may have come from a variety of government and non-government sources and is subject to change without notice. The Nova Scotia Department of Natural Resources accepts no liability for any errors, deficiencies, or faults on this map.

