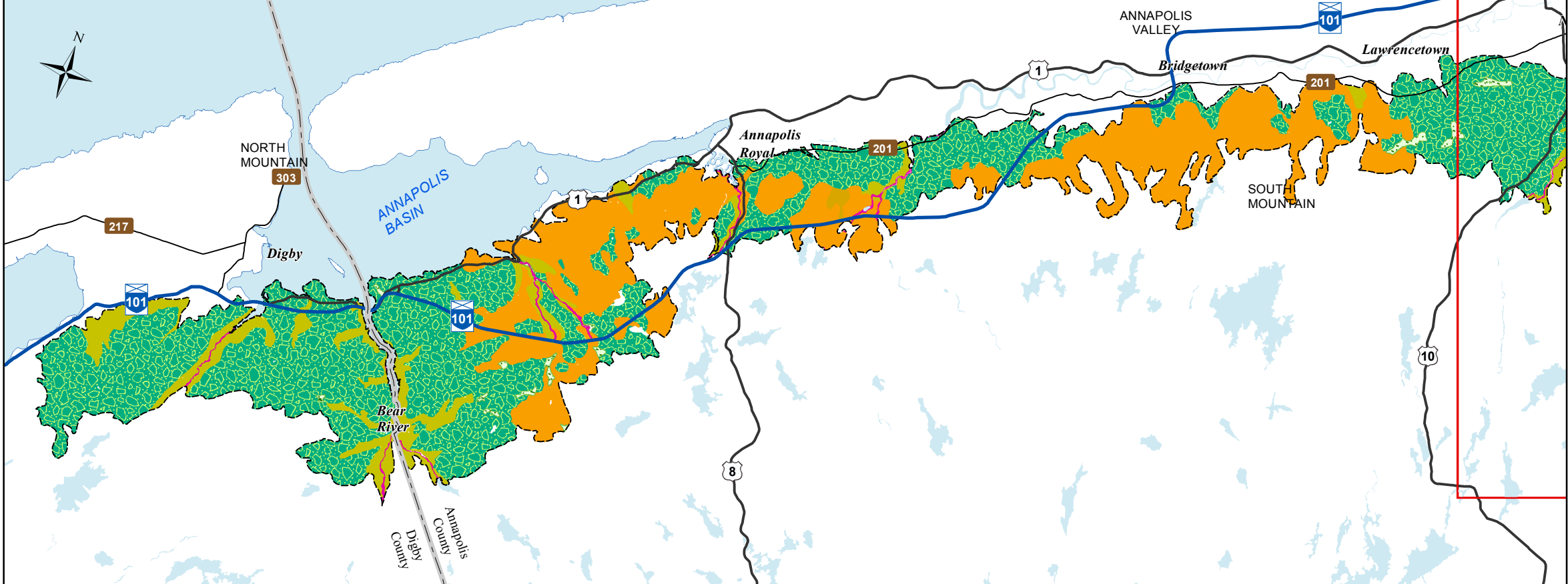
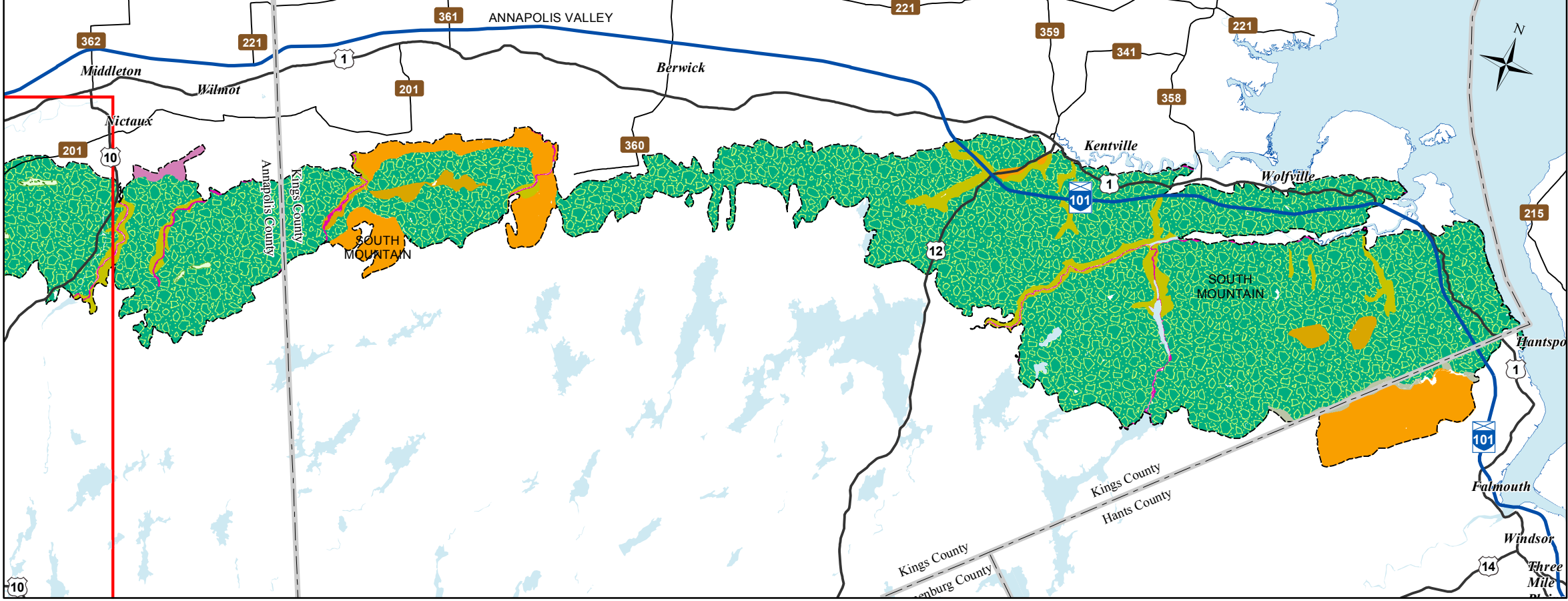


West



East

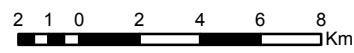


Ecological Landscape Analysis Map A Elements

Valley Slope - Ecodistrict 710

Legend

- Ecodistrict Boundary
- Valley Corridors
- Floodplain
- Pine Oak Hills and Hummocks
- Spruce Hemlock Pine Hummocks and Hills
- Spruce Pine Flats
- Tolerant Hardwood Hills
- Tolerant Mixedwood Slopes
- Wetlands
- Water



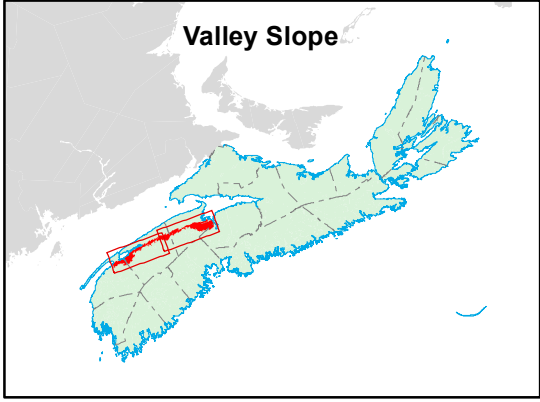
Map Notes

Base data derived from the Nova Scotia Topographic Database (NSTDB). Copyright Province of Nova Scotia. All rights reserved. Service Nova Scotia & Municipal Relations, Nova Scotia Geomatics Centre, 160 Willow St., Amherst, Nova Scotia. Species status and locations data from Atlantic Canada Conservation Data Centre.

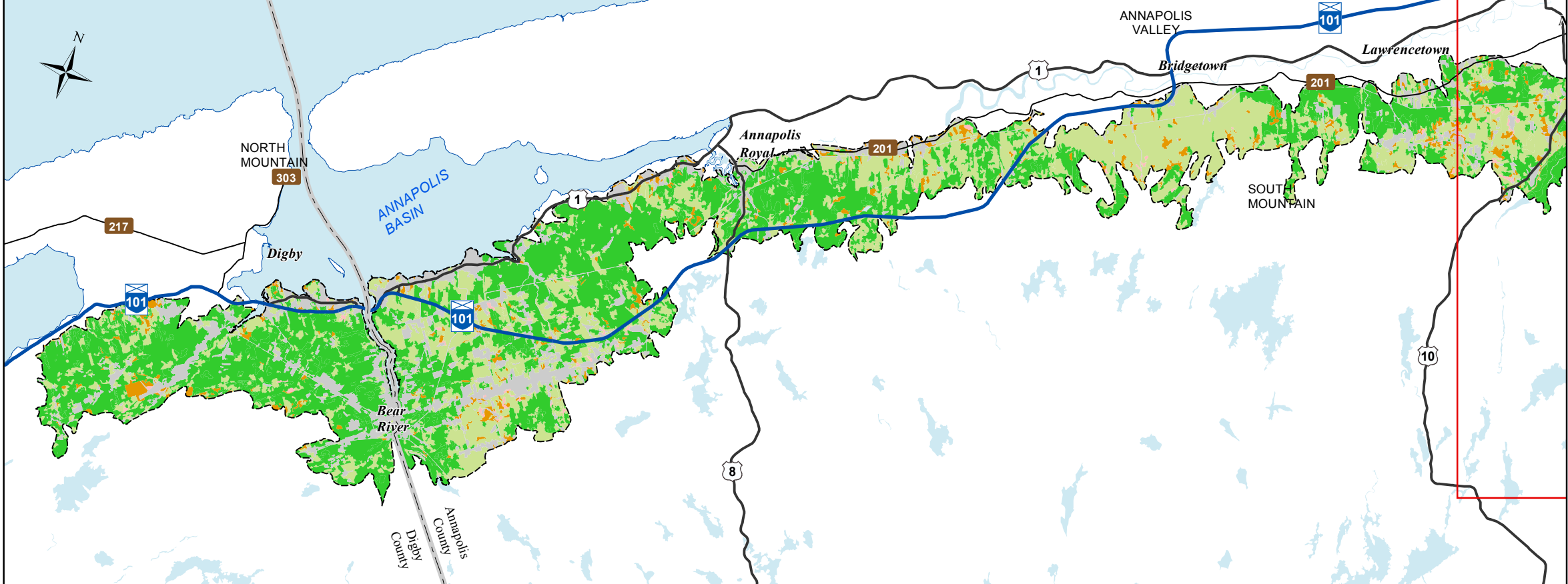
Additional information derived from Nova Scotia Department of Natural Resources, Geographic Information Systems (GIS) databases.

Disclaimer

The information on this map may have come from a variety of government and non-government sources and is subject to change without notice. The Nova Scotia Department of Natural Resources accepts no liability for any errors, deficiencies, or fault on this map.

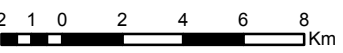


West

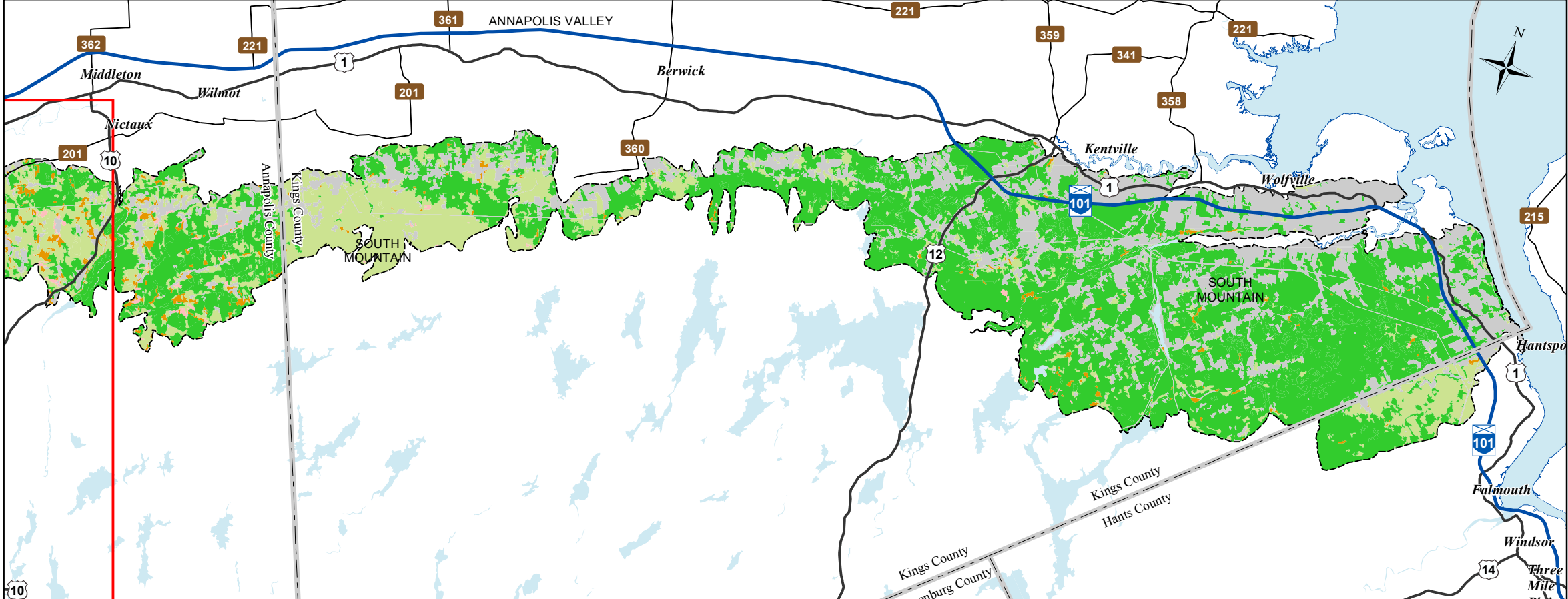


Ecological Landscape Analysis
Map 1
Land Capability
Valley Slope - Ecodistrict 710

- Legend**
- Ecodistrict Boundary
 - 0 (No capability/converted)
 - 1 - 3 (Low)
 - 4 - (Low - Medium)
 - 5 - (Medium)
 - 6+ - (High)
 - Water



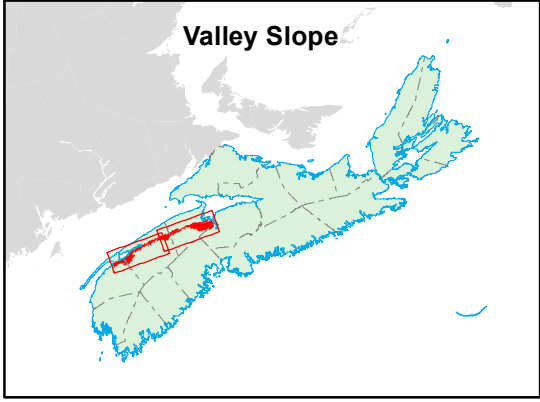
East



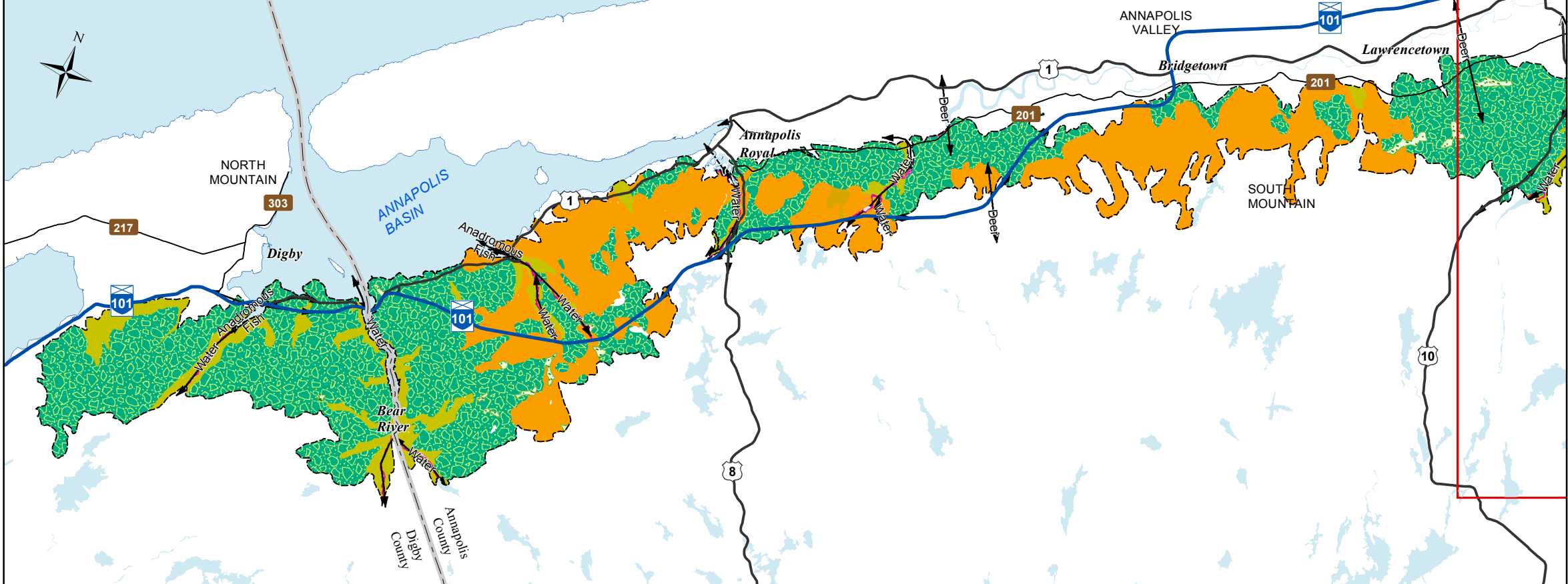
Map Notes
Base data derived from the Nova Scotia Topographic Database (NSTDB). Copyright Province of Nova Scotia. All rights reserved. Service Nova Scotia & Municipal Relations, Nova Scotia Geomatics Centre, 160 Willow St., Amherst, Nova Scotia. Species status and locations data from Atlantic Canada Conservation Data Centre.

Additional information derived from Nova Scotia Department of Natural Resources, Geographic Information Systems (GIS) databases.

Disclaimer
The information on this map may have come from a variety of government and non-government sources and is subject to change without notice. The Nova Scotia Department of Natural Resources accepts no liability for any errors, deficiencies, or fault on this map.



West

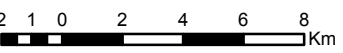


Ecological Landscape Analysis Map 2 Elements and Flows

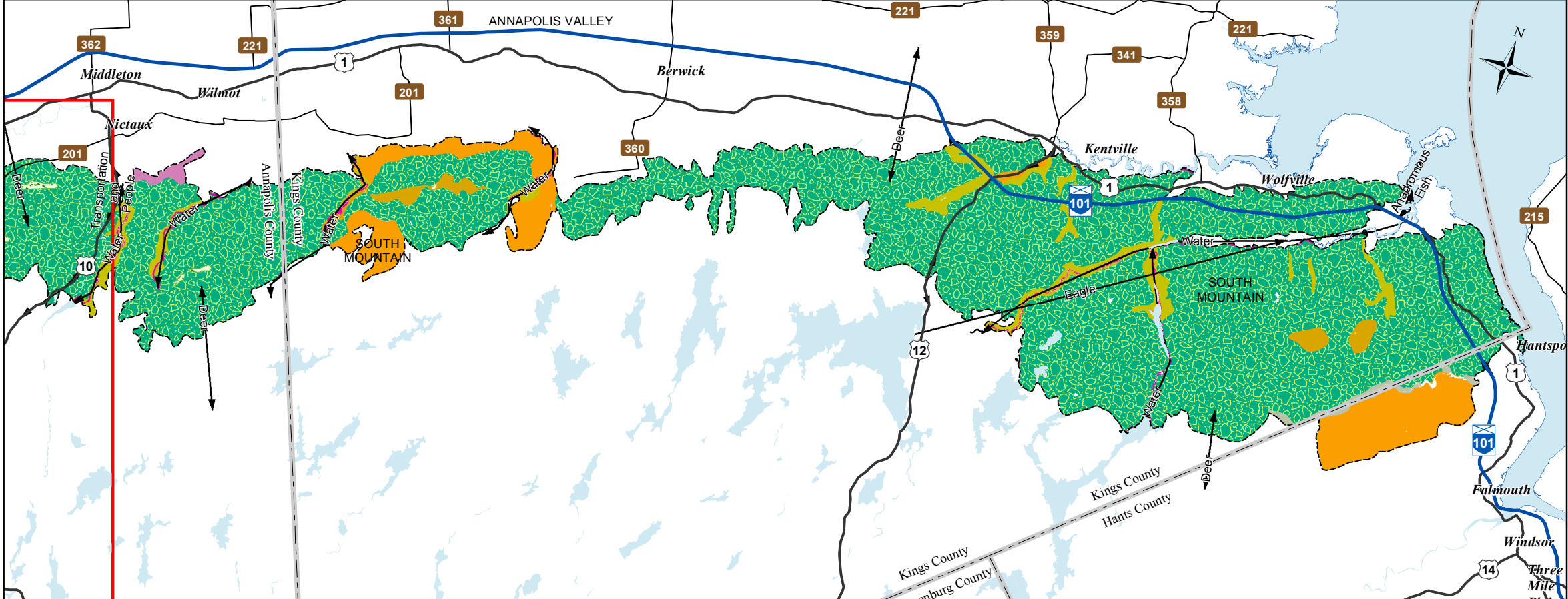
Valley Slope - Ecodistrict 710

Legend

- Ecodistrict Boundary
- Flows
- Valley Corridors
- Floodplain
- Pine Oak Hills and Hummocks
- Spruce Hemlock Pine Hummocks and Hills
- Spruce Pine Flats
- Tolerant Hardwood Hills
- Tolerant Mixedwood Slopes
- Wetlands
- Water



East



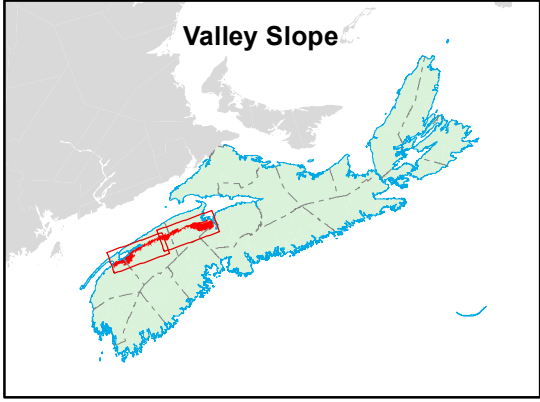
Map Notes

Base data derived from the Nova Scotia Topographic Database (NSTDB). Copyright Province of Nova Scotia. All rights reserved. Service Nova Scotia & Municipal Relations, Nova Scotia Geomatics Centre, 160 Willow St., Amherst, Nova Scotia. Species status and locations data from Atlantic Canada Conservation Data Centre.

Additional information derived from Nova Scotia Department of Natural Resources, Geographic Information Systems (GIS) databases.

Disclaimer

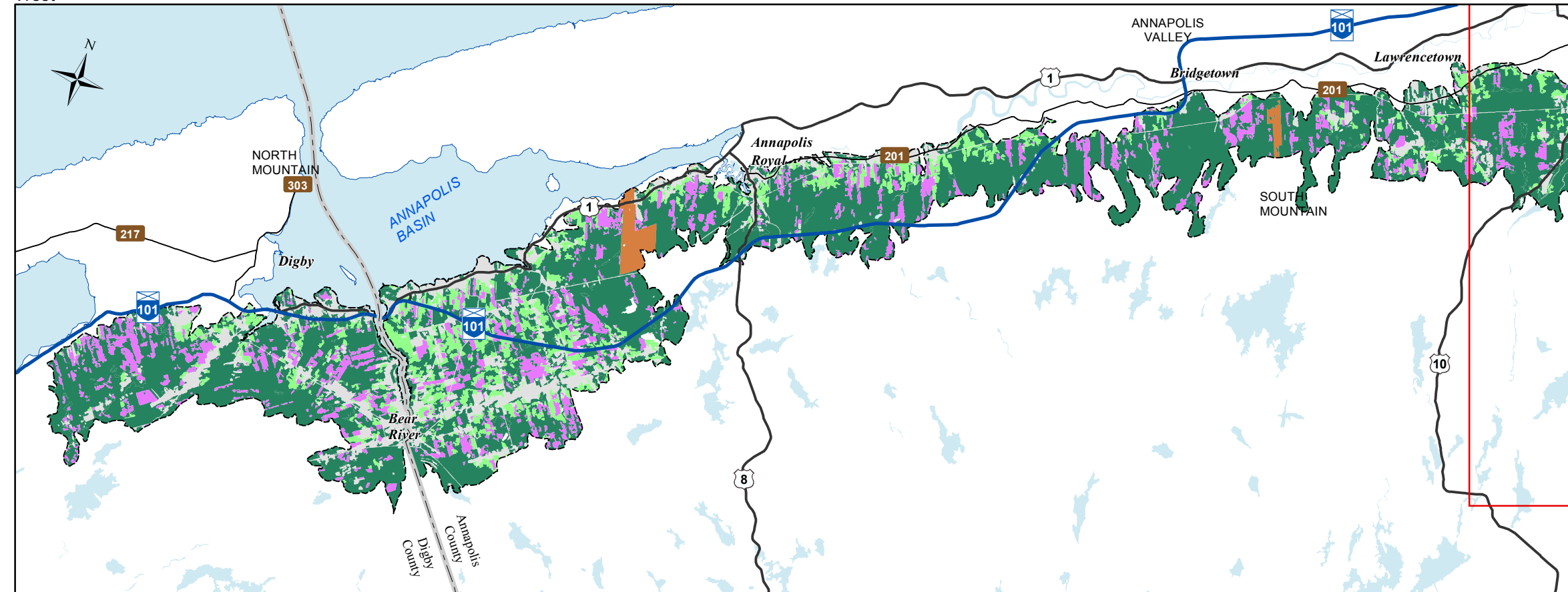
The information on this map may have come from a variety of government and non-government sources and is subject to change without notice. The Nova Scotia Department of Natural Resources accepts no liability for any errors, deficiencies, or fault on this map.



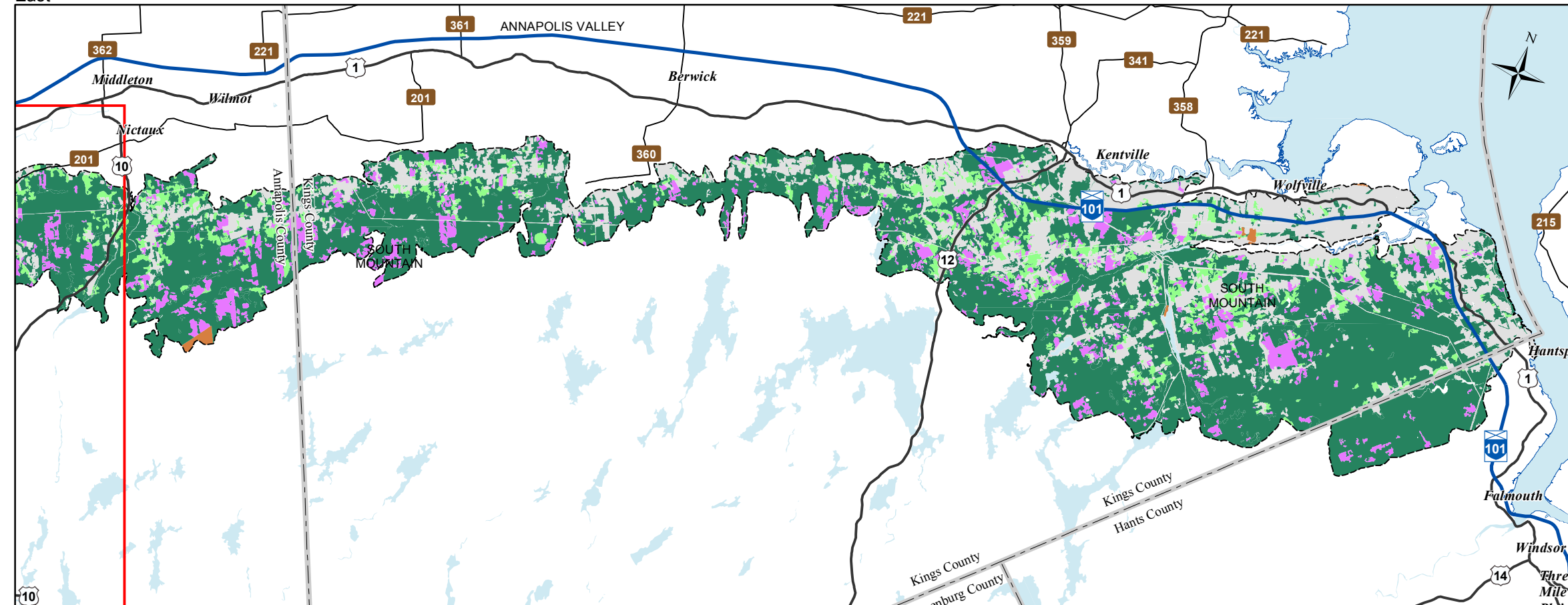
Date: 6/26/2015



West



East



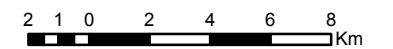
Date: 6/26/2015

Ecological Landscape Analysis Map 3 Ecological Emphasis Classes

Valley Slope - Ecodistrict 710

Legend

- Ecodistrict Boundary
- Reserve
- Extensive
- Intensive
- Converted
- Unclassified
- Water



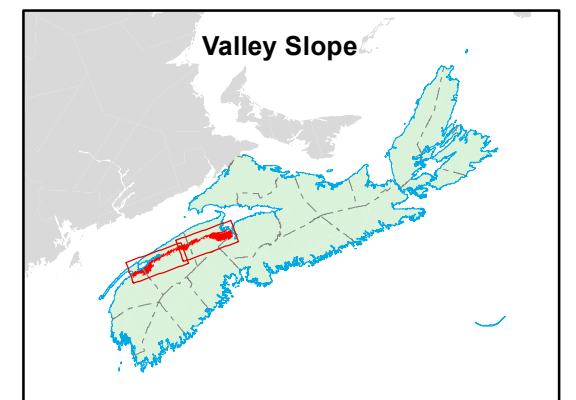
Map Notes

Base data derived from the Nova Scotia Topographic Database (NSTDB). Copyright Province of Nova Scotia. All rights reserved. Service Nova Scotia & Municipal Relations, Nova Scotia Geomatics Centre, 160 Willow St., Amherst, Nova Scotia. Species status and locations data from Atlantic Canada Conservation Data Centre.

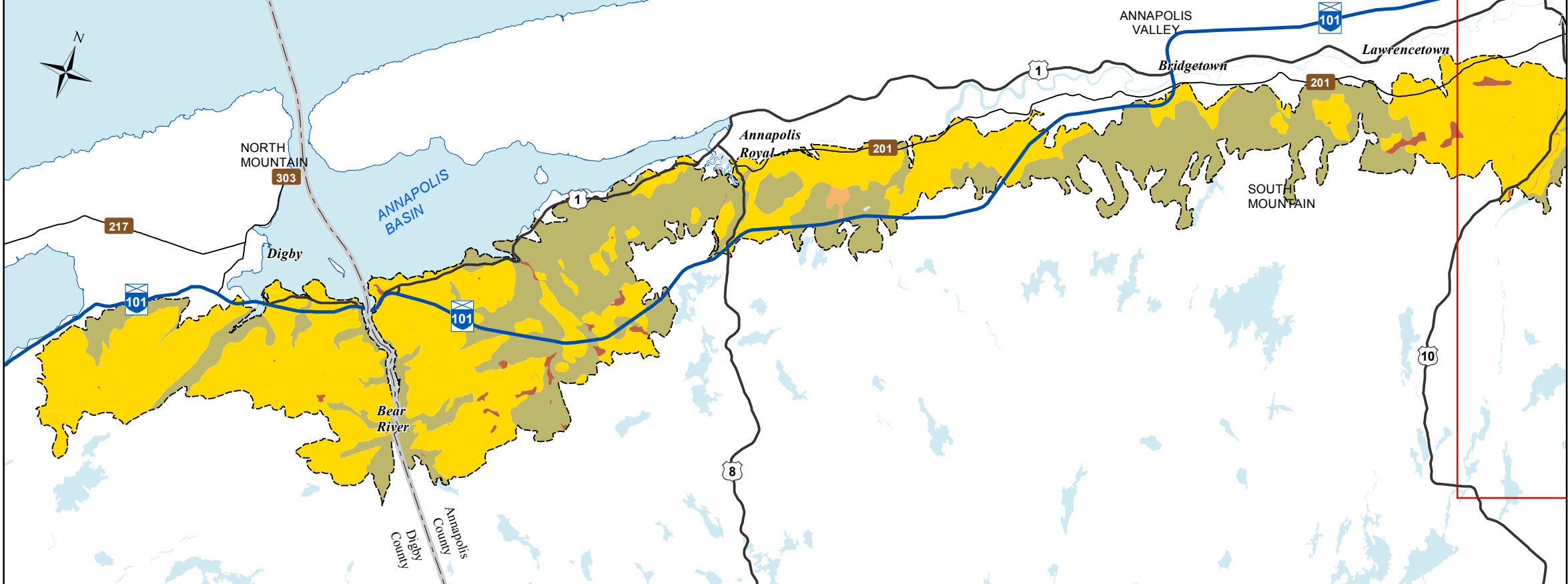
Additional information derived from Nova Scotia Department of Natural Resources, Geographic Information Systems (GIS) databases.

Disclaimer

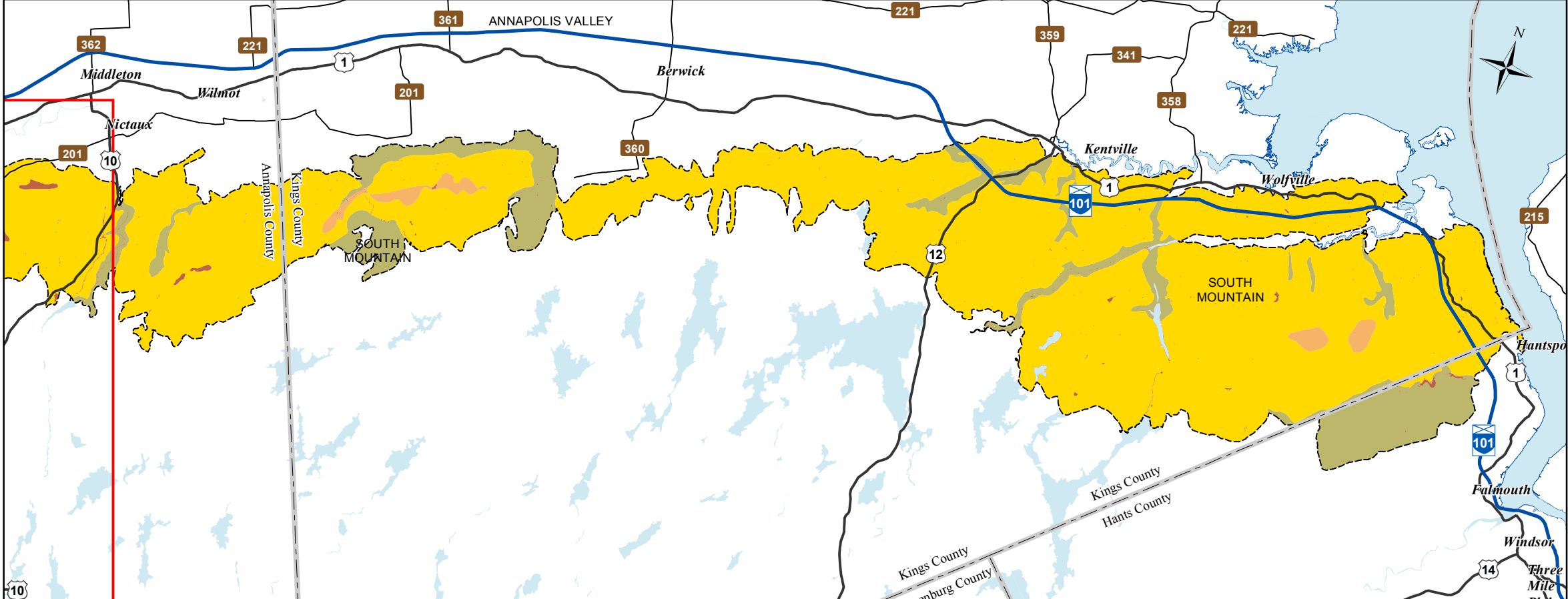
The information on this map may have come from a variety of government and non-government sources and is subject to change without notice. The Nova Scotia Department of Natural Resources accepts no liability for any errors, deficiencies, or faults on this map.



West



East



Ecological Landscape Analysis

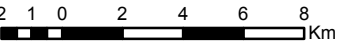
Map 4

Natural Disturbances

Valley Slope - Ecodistrict 710

Legend

- Ecodistrict Boundary
- Frequent
- Gap
- Infrequent
- Open Seral
- Water



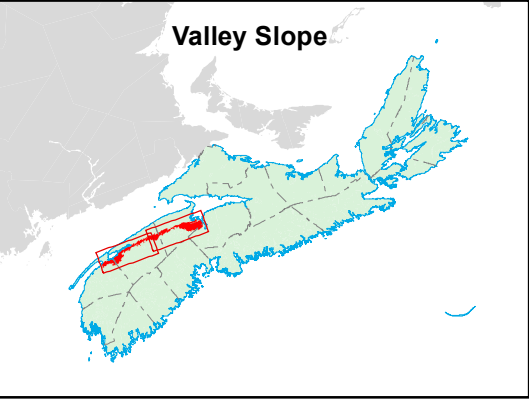
Map Notes

Base data derived from the Nova Scotia Topographic Database (NSTDB). Copyright Province of Nova Scotia. All rights reserved. Service Nova Scotia & Municipal Relations, Nova Scotia Geomatics Centre, 160 Willow St., Amherst, Nova Scotia. Species status and locations data from Atlantic Canada Conservation Data Centre.

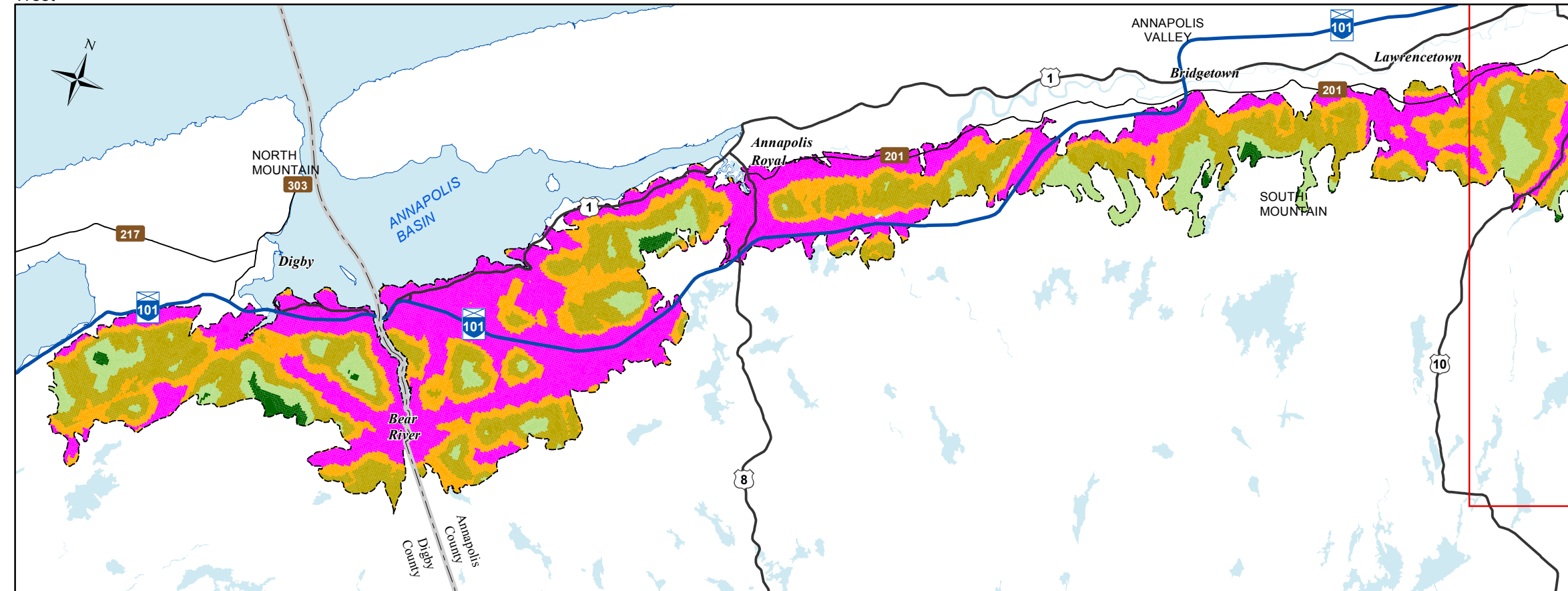
Additional information derived from Nova Scotia Department of Natural Resources, Geographic Information Systems (GIS) databases.

Disclaimer

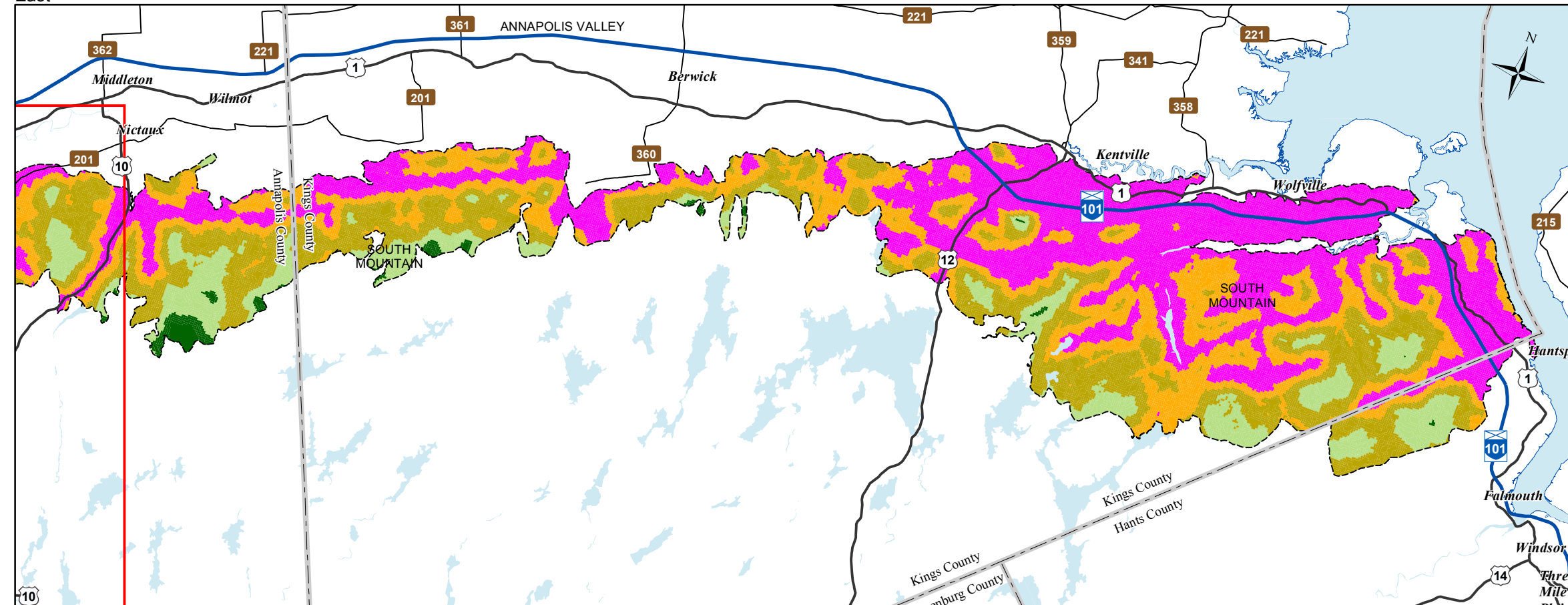
The information on this map may have come from a variety of government and non-government sources and is subject to change without notice. The Nova Scotia Department of Natural Resources accepts no liability for any errors, deficiencies, or fault on this map.



West



East



Date: 6/26/2015

Ecological Landscape Analysis Map 5 Road Index

Valley Slope - Ecodistrict 710

Legend

- Ecodistrict Boundary
- Remote
- Forest Resource
- Mixed Rural
- Agriculture Suburban
- Urban
- Water

2 1 0 2 4 6 8 Km

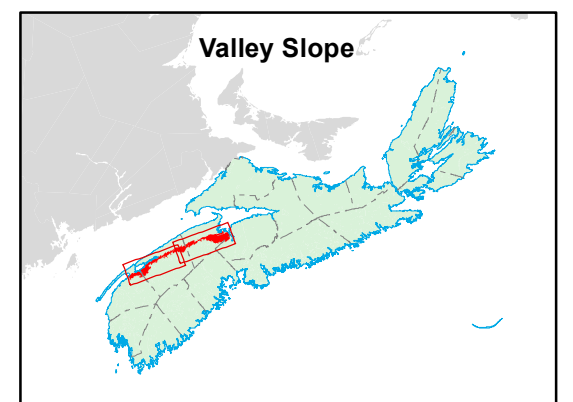
Map Notes

Base data derived from the Nova Scotia Topographic Database (NSTDB). Copyright Province of Nova Scotia. All rights reserved. Service Nova Scotia & Municipal Relations, Nova Scotia Geomatics Centre, 160 Willow St., Amherst, Nova Scotia. Species status and locations data from Atlantic Canada Conservation Data Centre.

Additional information derived from Nova Scotia Department of Natural Resources, Geographic Information Systems (GIS) databases.

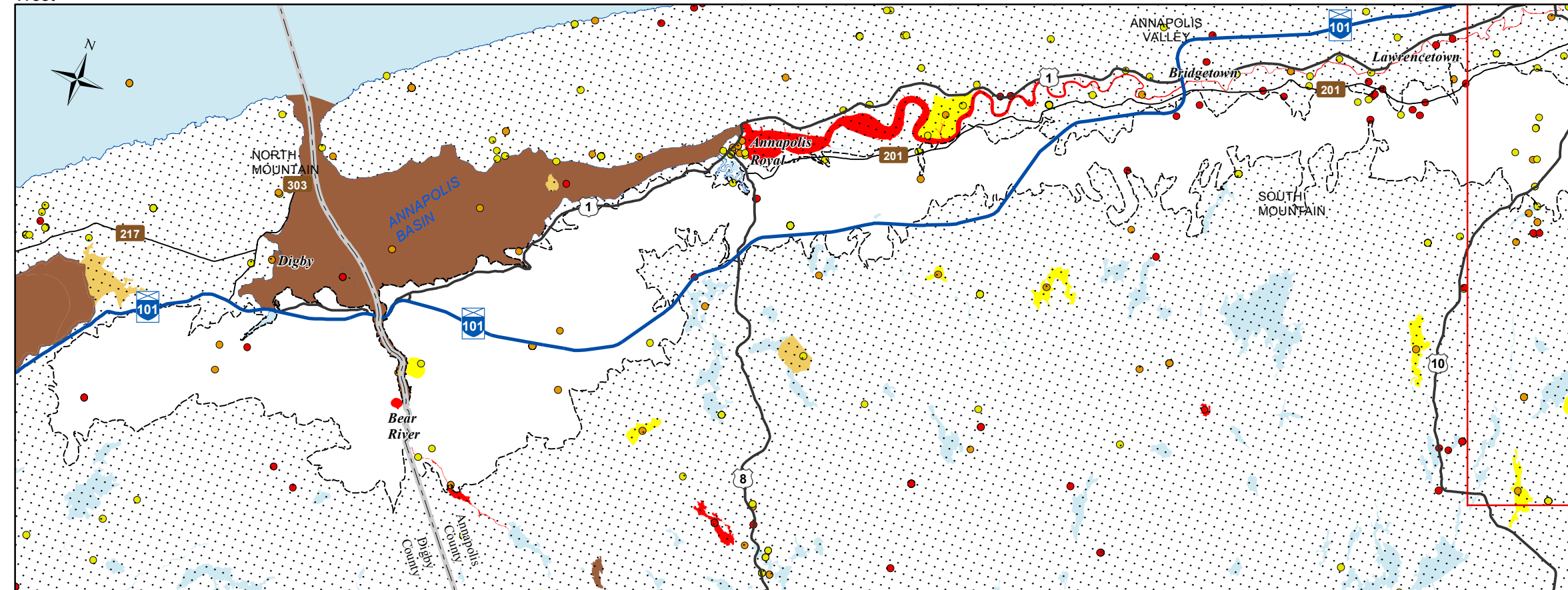
Disclaimer

The information on this map may have come from a variety of government and non-government sources and is subject to change without notice. The Nova Scotia Department of Natural Resources accepts no liability for any errors, deficiencies, or fault on this map.

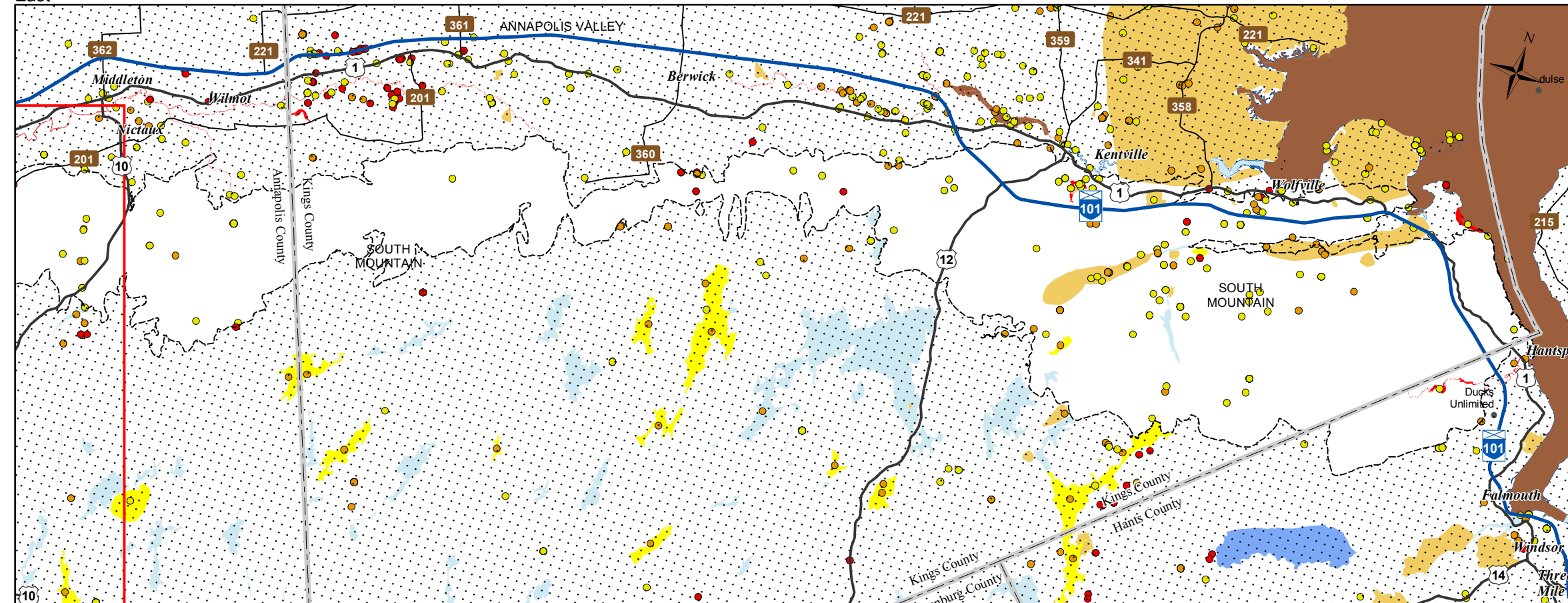


NOVA SCOTIA

West



East



Date: 6/26/2015

Ecological Landscape Analysis Map 6 Special Occurrences - Species

Valley Slope - Ecodistrict 710

Legend

- Ecodistrict Boundary
- Outside Ecodistrict
- Other Occurrences (Point of Interest)
- At Risk
- May Be At Risk
- Sensitive
- Species at risk
- Species of conservation concern
- Deer wintering
- Migratory bird
- Other significant habitat
- Water

2 1 0 2 4 6 8 Km

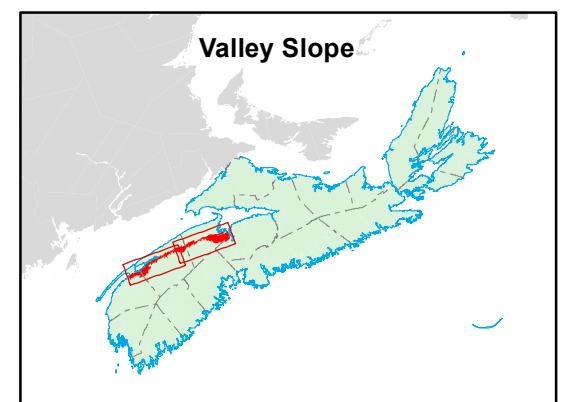
Map Notes

Base data derived from the Nova Scotia Topographic Database (NSTDB). Copyright Province of Nova Scotia. All rights reserved. Service Nova Scotia & Municipal Relations, Nova Scotia Geomatics Centre, 160 Willow St., Amherst, Nova Scotia. Species status and locations data from Atlantic Canada Conservation Data Centre.

Additional information derived from Nova Scotia Department of Natural Resources, Geographic Information Systems (GIS) databases.

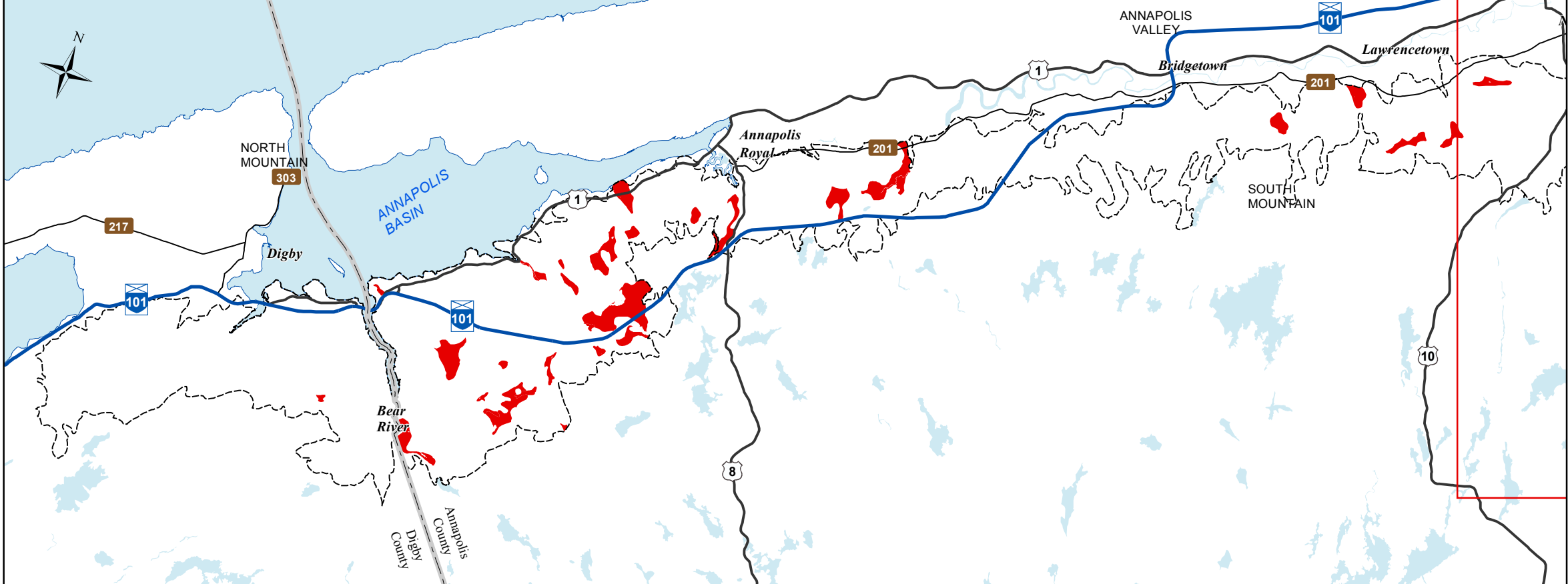
Disclaimer

The information on this map may have come from a variety of government and non-government sources and is subject to change without notice. The Nova Scotia Department of Natural Resources accepts no liability for any errors, deficiencies, or fault on this map.




NOVA SCOTIA

West



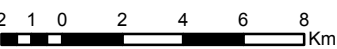
Ecological Landscape Analysis

Map 7

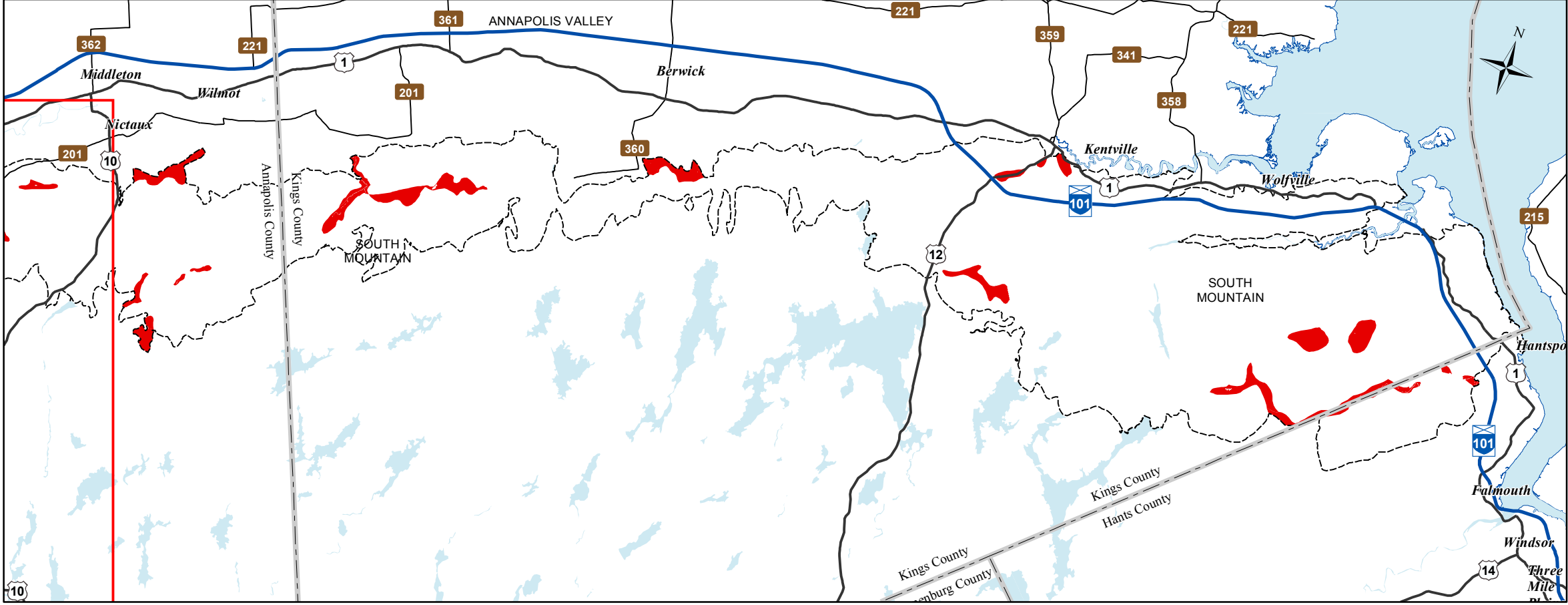
Rare Ecosections

Valley Slope - Ecodistrict 710

- Legend**
- Ecodistrict Boundary
 - Rare Ecosections
 - Water



East



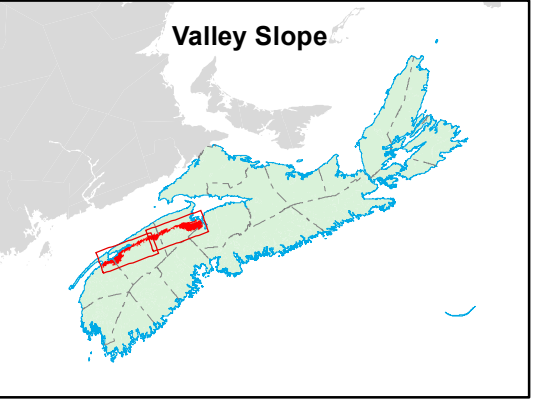
Map Notes

Base data derived from the Nova Scotia Topographic Database (NSTDB). Copyright Province of Nova Scotia. All rights reserved. Service Nova Scotia & Municipal Relations, Nova Scotia Geomatics Centre, 160 Willow St., Amherst, Nova Scotia. Species status and locations data from Atlantic Canada Conservation Data Centre.

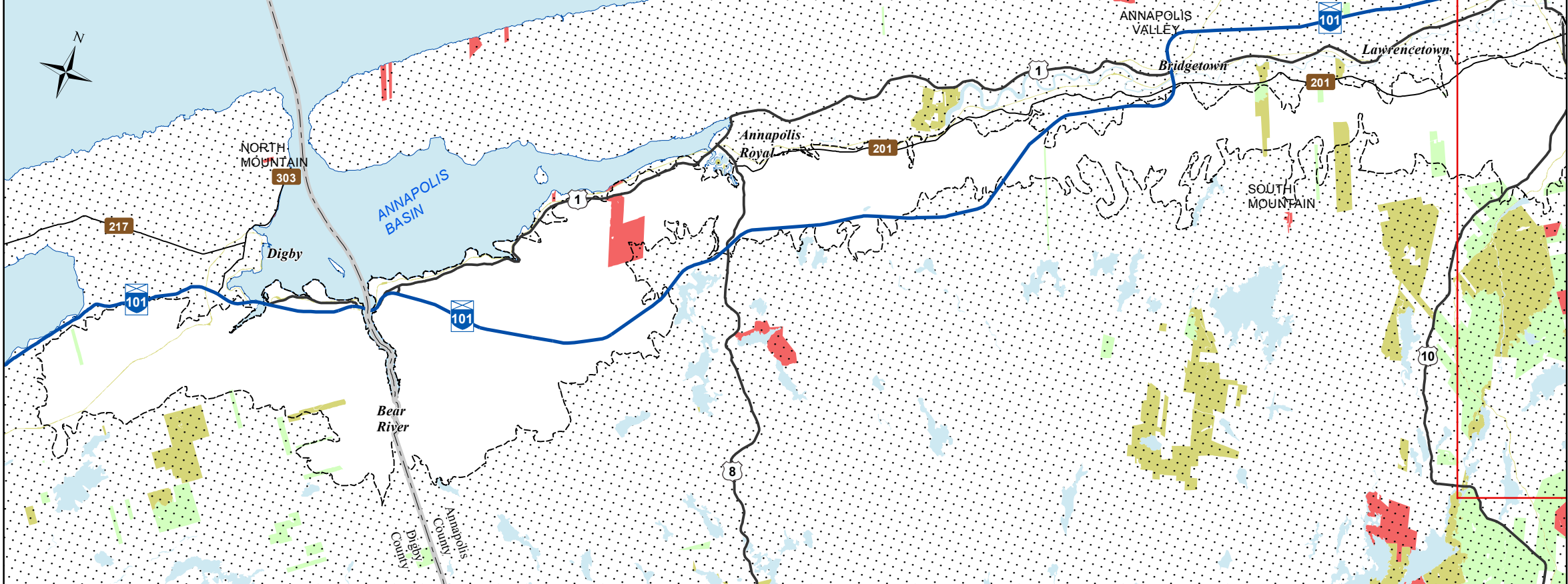
Additional information derived from Nova Scotia Department of Natural Resources, Geographic Information Systems (GIS) databases.

Disclaimer

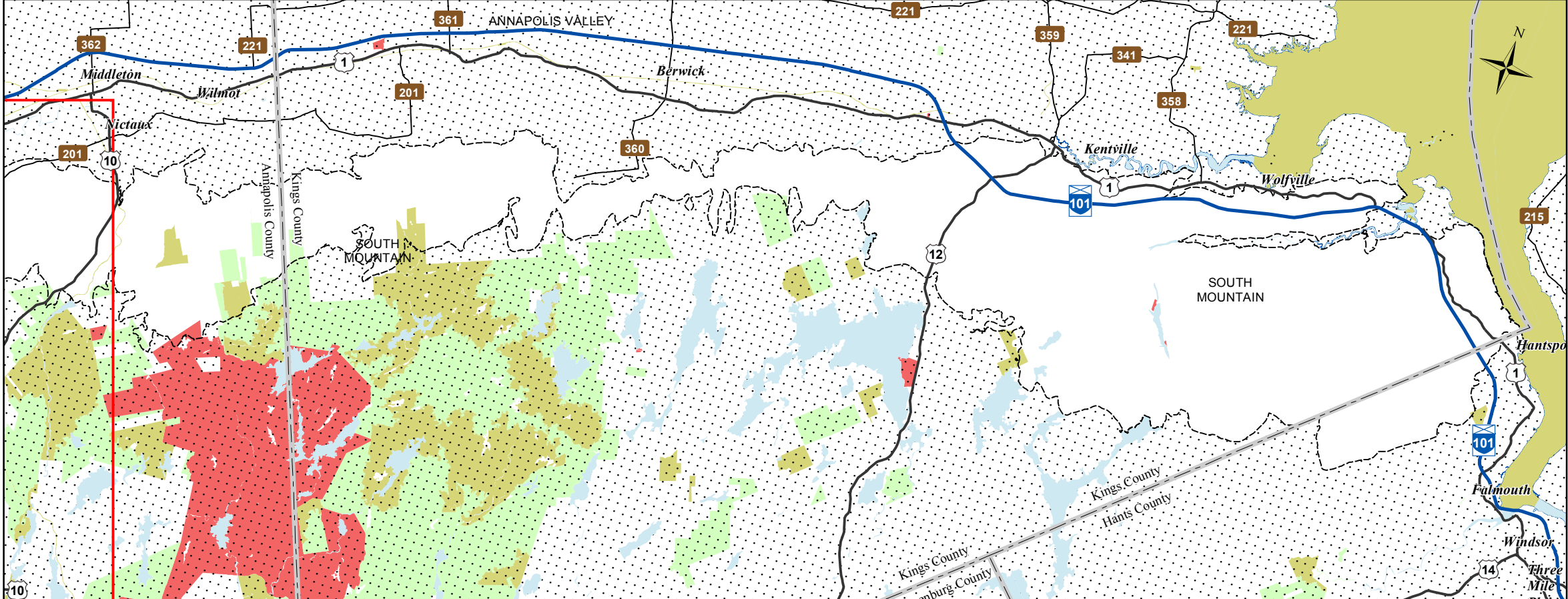
The information on this map may have come from a variety of government and non-government sources and is subject to change without notice. The Nova Scotia Department of Natural Resources accepts no liability for any errors, deficiencies, or faults on this map.



West



East



Ecological Landscape Analysis

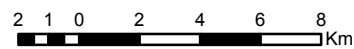
Map 8

IRM Classes

Valley Slope - Ecodistrict 710

Legend

- Ecodistrict Boundary
- C1 - General Resource Use
- C2 - Multiple and Adaptive Resource Use
- C3 - Protected and Limited Use
- Water



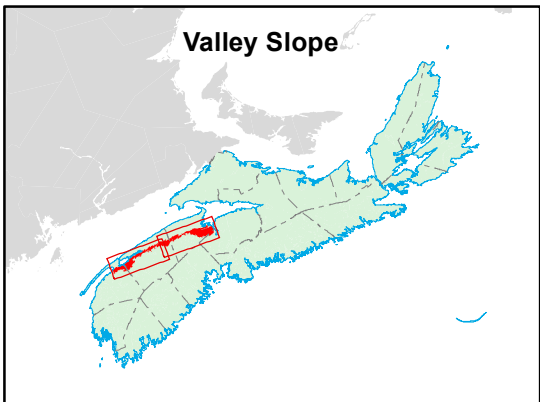
Map Notes

Base data derived from the Nova Scotia Topographic Database (NSTDB). Copyright Province of Nova Scotia. All rights reserved. Service Nova Scotia & Municipal Relations, Nova Scotia Geomatics Centre, 160 Willow St., Amherst, Nova Scotia. Species status and locations data from Atlantic Canada Conservation Data Centre.

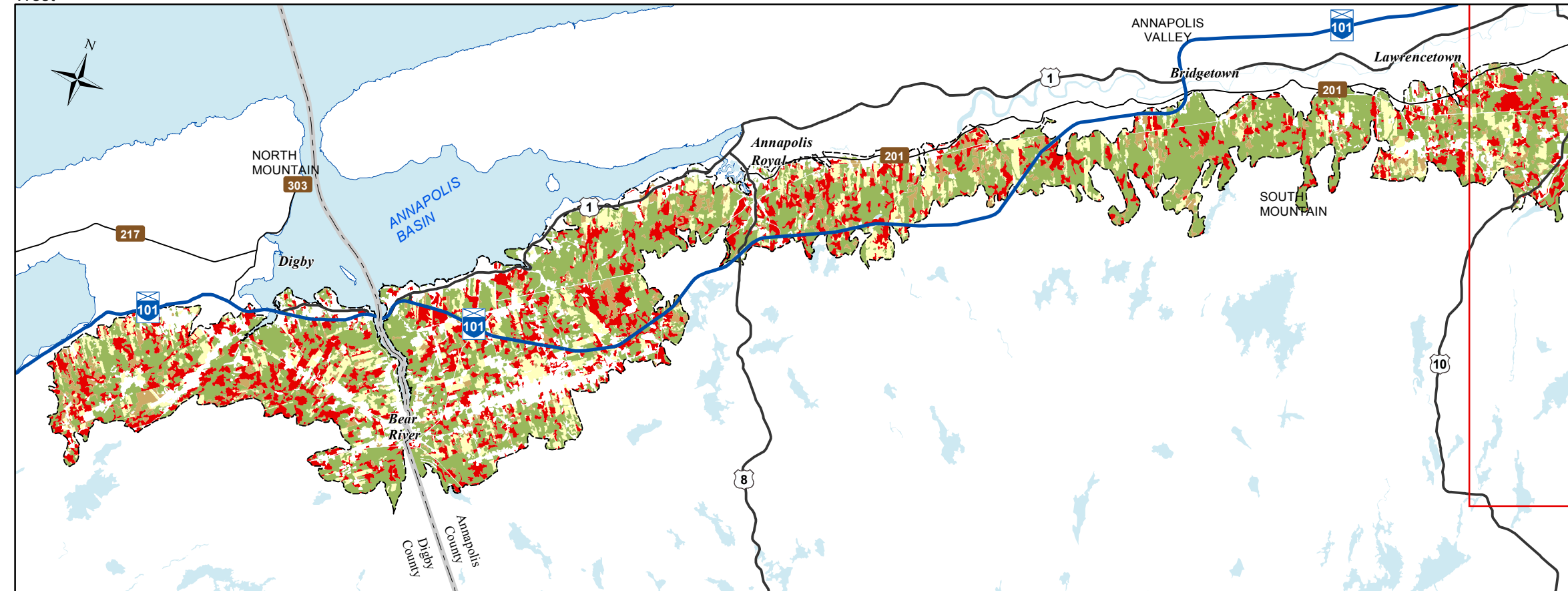
Additional information derived from Nova Scotia Department of Natural Resources, Geographic Information Systems (GIS) databases.

Disclaimer

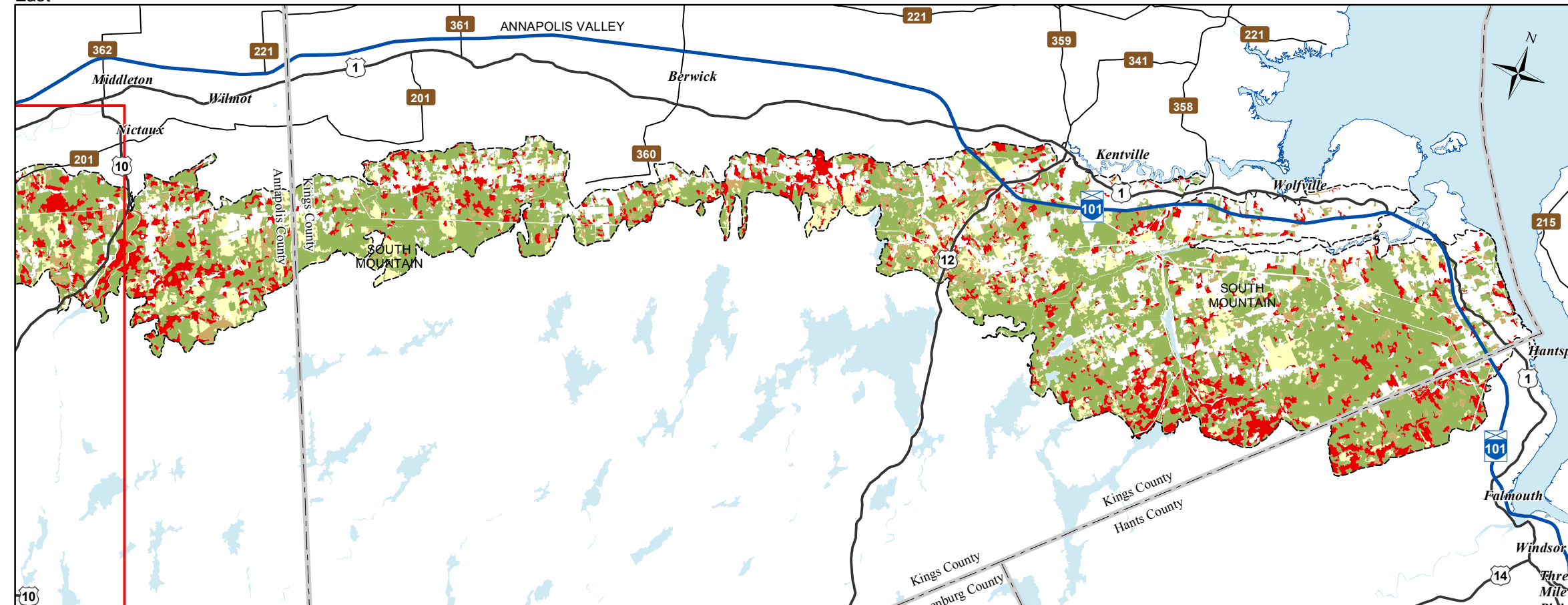
The information on this map may have come from a variety of government and non-government sources and is subject to change without notice. The Nova Scotia Department of Natural Resources accepts no liability for any errors, deficiencies, or fault on this map.



West



East



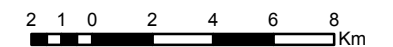
Date: 6/26/2015

Ecological Landscape Analysis Map 9 Development Classes

Valley Slope - Ecodistrict 710

Legend

- Ecodistrict Boundary
- Not forested
- Establishment
- Young Forest
- Mature Timber
- Multi-Aged / Old Forest
- Water



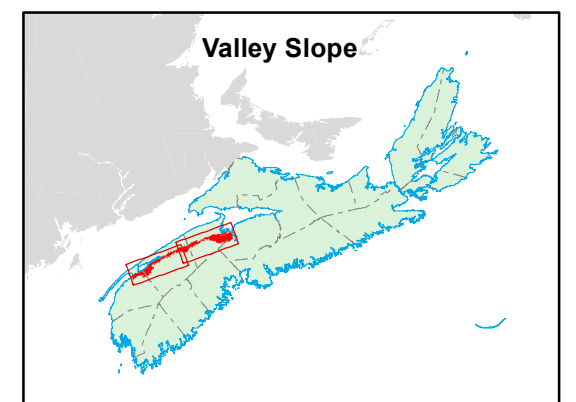
Map Notes

Base data derived from the Nova Scotia Topographic Database (NSTDB). Copyright Province of Nova Scotia. All rights reserved. Service Nova Scotia & Municipal Relations, Nova Scotia Geomatics Centre, 160 Willow St., Amherst, Nova Scotia. Species status and locations data from Atlantic Canada Conservation Data Centre.

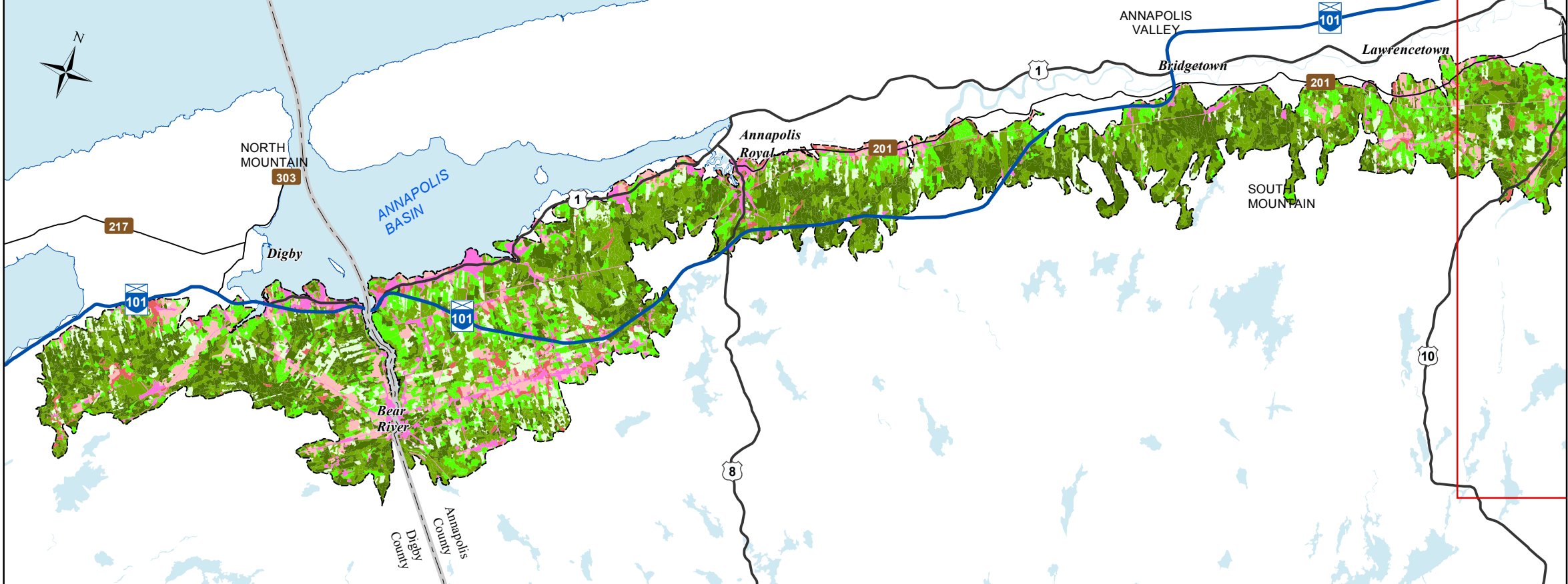
Additional information derived from Nova Scotia Department of Natural Resources, Geographic Information Systems (GIS) databases.

Disclaimer

The information on this map may have come from a variety of government and non-government sources and is subject to change without notice. The Nova Scotia Department of Natural Resources accepts no liability for any errors, deficiencies, or fault on this map.



West



Ecological Landscape Analysis

Map 10

Seral Stages

Valley Slope - Ecodistrict 710

Legend

--- Ecodistrict Boundary

Ecological Land Cover

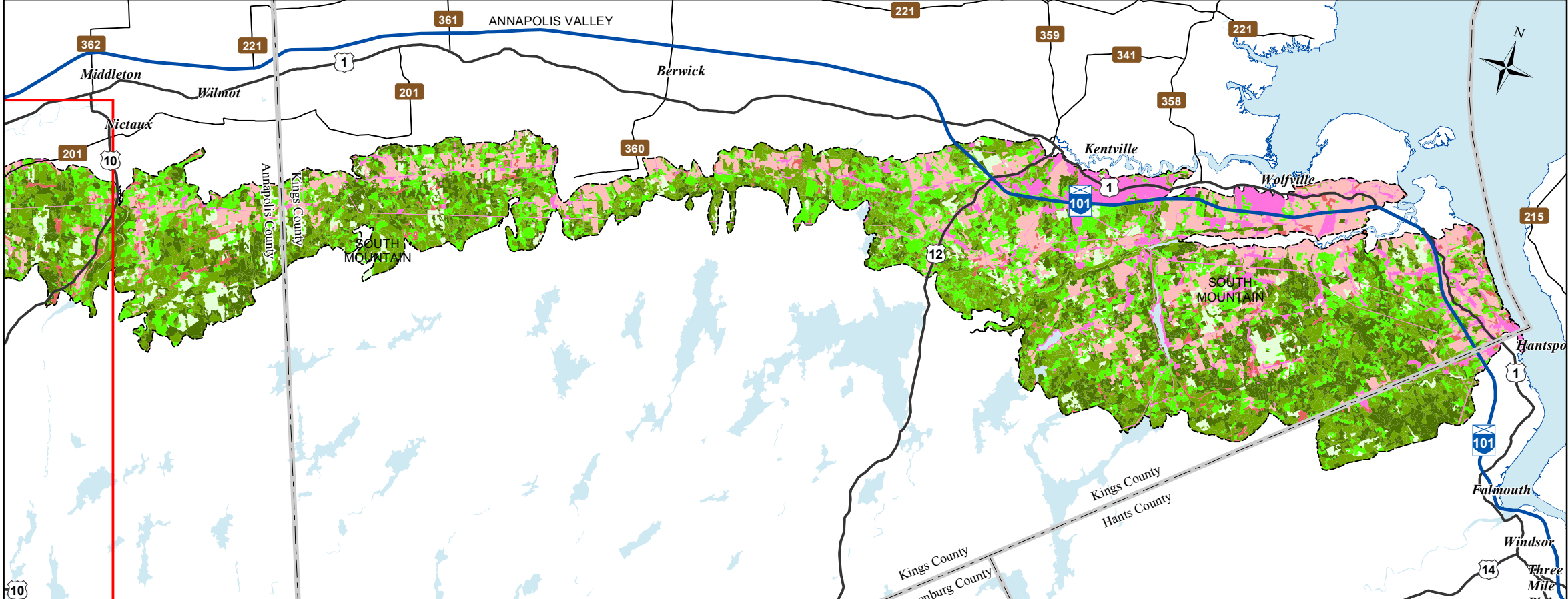
- Agriculture and Developed Vegetation
- Shrublands and Herbaceous Vegetation
- Sparse Vegetation and Naturally Unvegetated
- Urban/Industrial Vegetation and Unvegetated

Seral Stage

- Unclassified (e.g. recent cut)
- Early
- Mid
- Late
- Water

2 1 0 2 4 6 8 Km

East



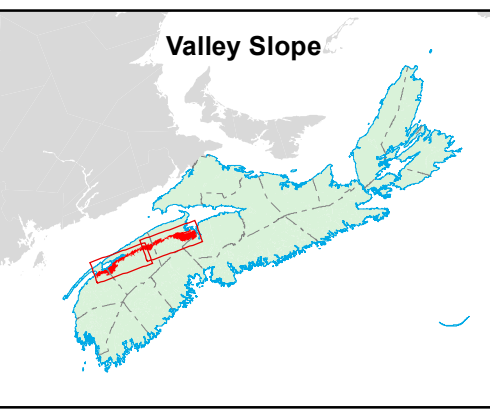
Map Notes

Base data derived from the Nova Scotia Topographic Database (NSTDB). Copyright Province of Nova Scotia. All rights reserved. Service Nova Scotia & Municipal Relations, Nova Scotia Geomatics Centre, 160 Willow St., Amherst, Nova Scotia. Species status and locations data from Atlantic Canada Conservation Data Centre.

Additional information derived from Nova Scotia Department of Natural Resources, Geographic Information Systems (GIS) databases.

Disclaimer

The information on this map may have come from a variety of government and non-government sources and is subject to change without notice. The Nova Scotia Department of Natural Resources accepts no liability for any errors, deficiencies, or fault on this map.



Date: 6/26/2015

