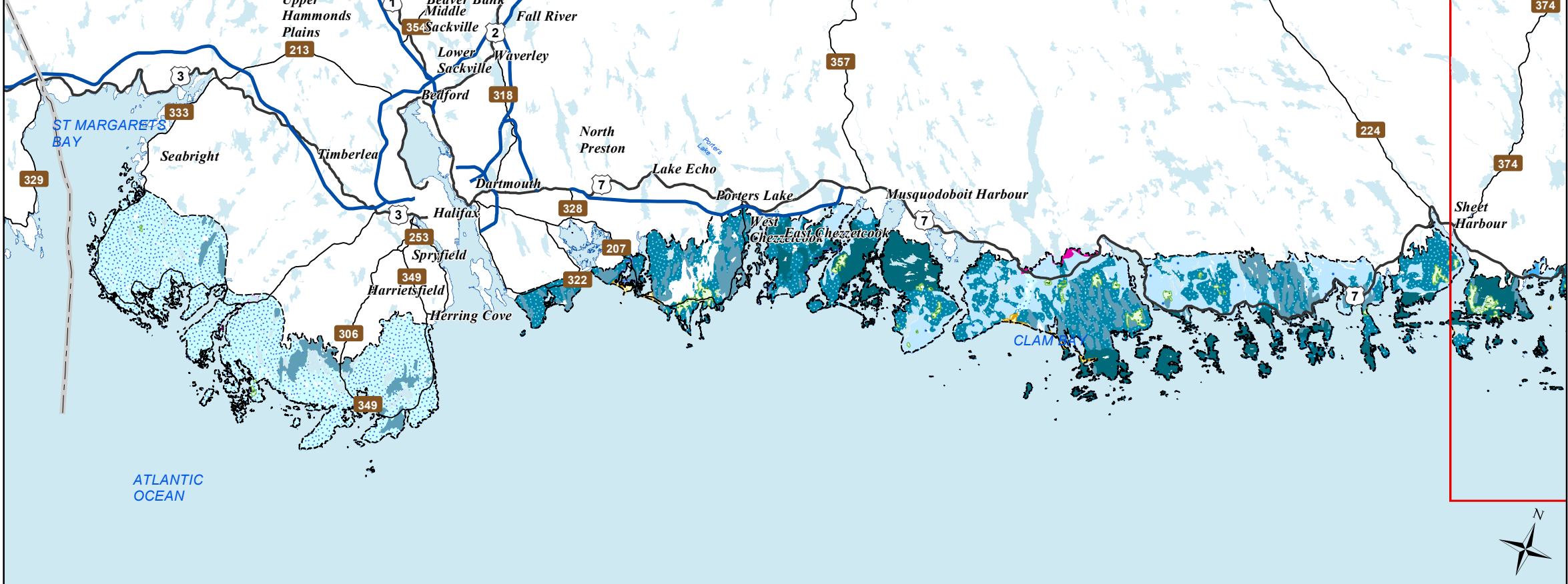


West



# Ecological Landscape Analysis Map A Elements

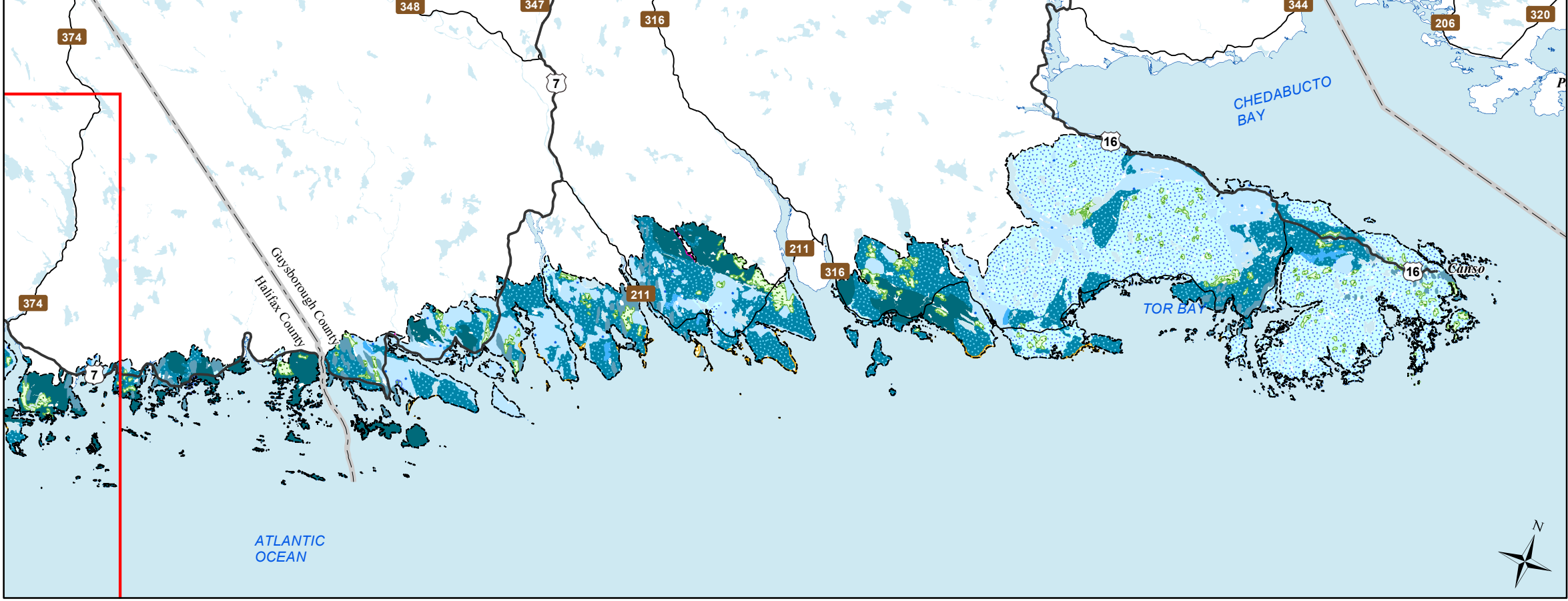
Eastern Shore - Ecodistrict 820

## Legend

- Ecodistrict Boundary
- Valley Corridors
- Coastal Barrens
- Coastal Beach
- Coastal Mixedwood Hills
- Coastal Mixedwood Hills and Drumlins
- Coastal Spruce
- Coastal Spruce Flats
- Coastal Spruce Ridges
- Salt Marshes
- Wetlands
- Water

2 10 2 4 6 8 10 12 14 16 18  
Km

East



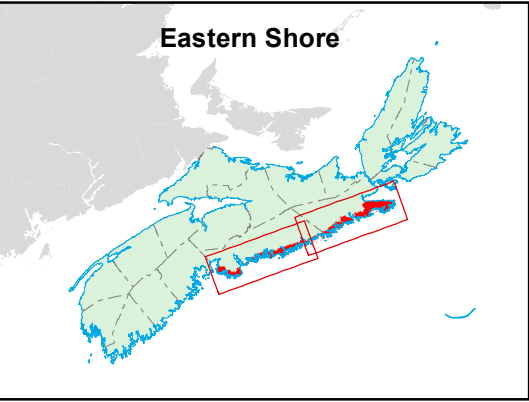
## Map Notes

Base data derived from the Nova Scotia Topographic Database (NSTDB). Copyright Province of Nova Scotia. All rights reserved. Service Nova Scotia & Municipal Relations, Nova Scotia Geomatics Centre, 160 Willow St., Amherst, Nova Scotia. Species status and locations data from Atlantic Canada Conservation Data Centre.

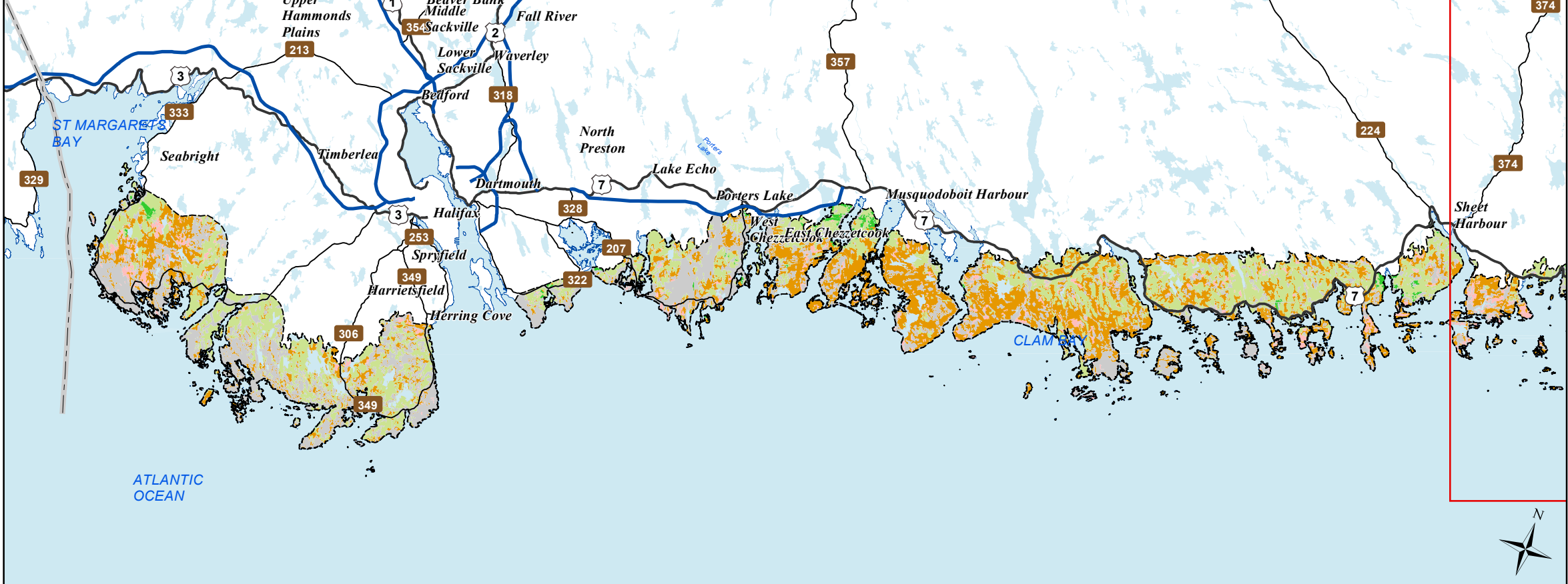
Additional information derived from Nova Scotia Department of Natural Resources, Geographic Information Systems (GIS) databases.

## Disclaimer

The information on this map may have come from a variety of government and non-government sources and is subject to change without notice. The Nova Scotia Department of Natural Resources accepts no liability for any errors, deficiencies, or faults on this map.

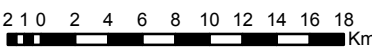


West

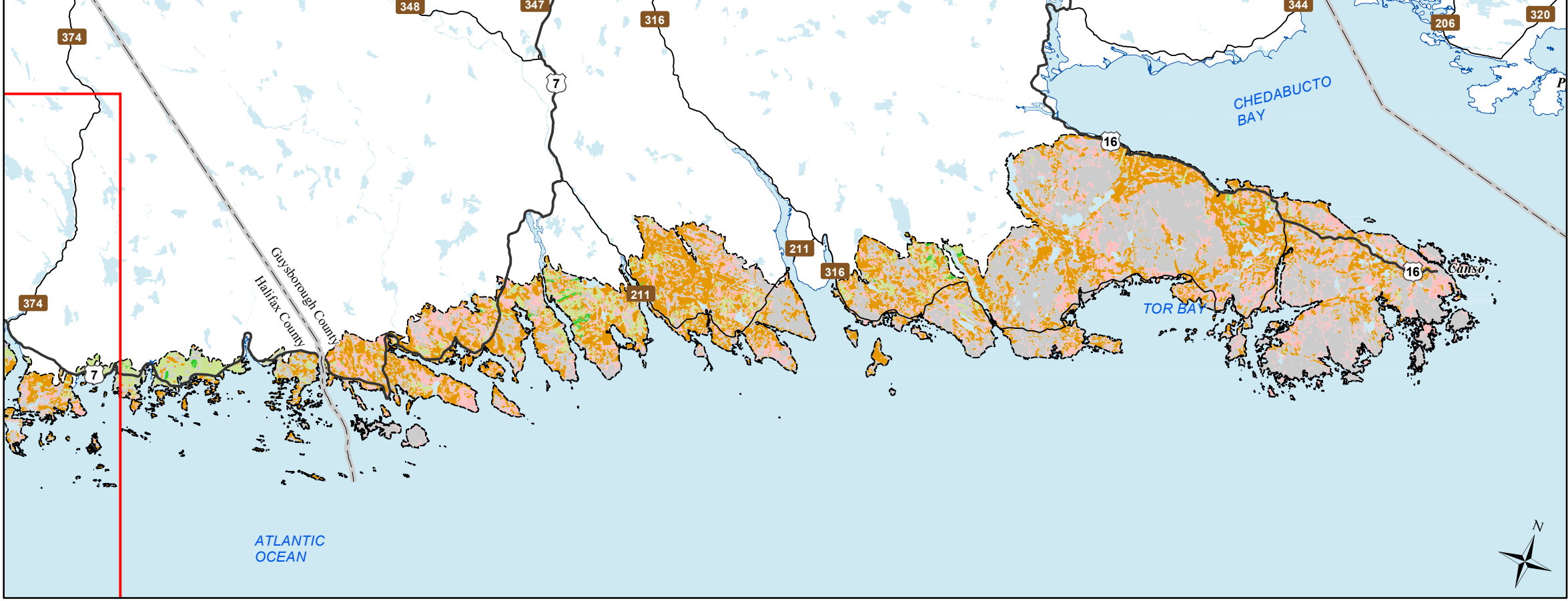


**Ecological Landscape Analysis**  
**Map 1**  
**Land Capability**  
Eastern Shore - Ecodistrict 820

- Legend**
- Ecodistrict Boundary
  - 0 (No capability/converted)
  - 1 - 3 (Low)
  - 4 - (Low - Medium)
  - 5 - (Medium)
  - 6+ - (High)
  - Water



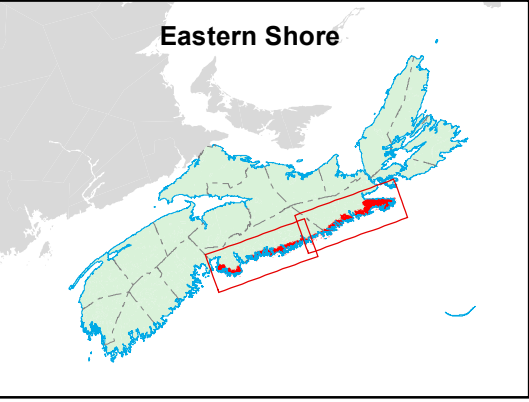
East



**Map Notes**  
Base data derived from the Nova Scotia Topographic Database (NSTDB). Copyright Province of Nova Scotia. All rights reserved. Service Nova Scotia & Municipal Relations, Nova Scotia Geomatics Centre, 160 Willow St., Amherst, Nova Scotia. Species status and locations data from Atlantic Canada Conservation Data Centre.

Additional information derived from Nova Scotia Department of Natural Resources, Geographic Information Systems (GIS) databases.

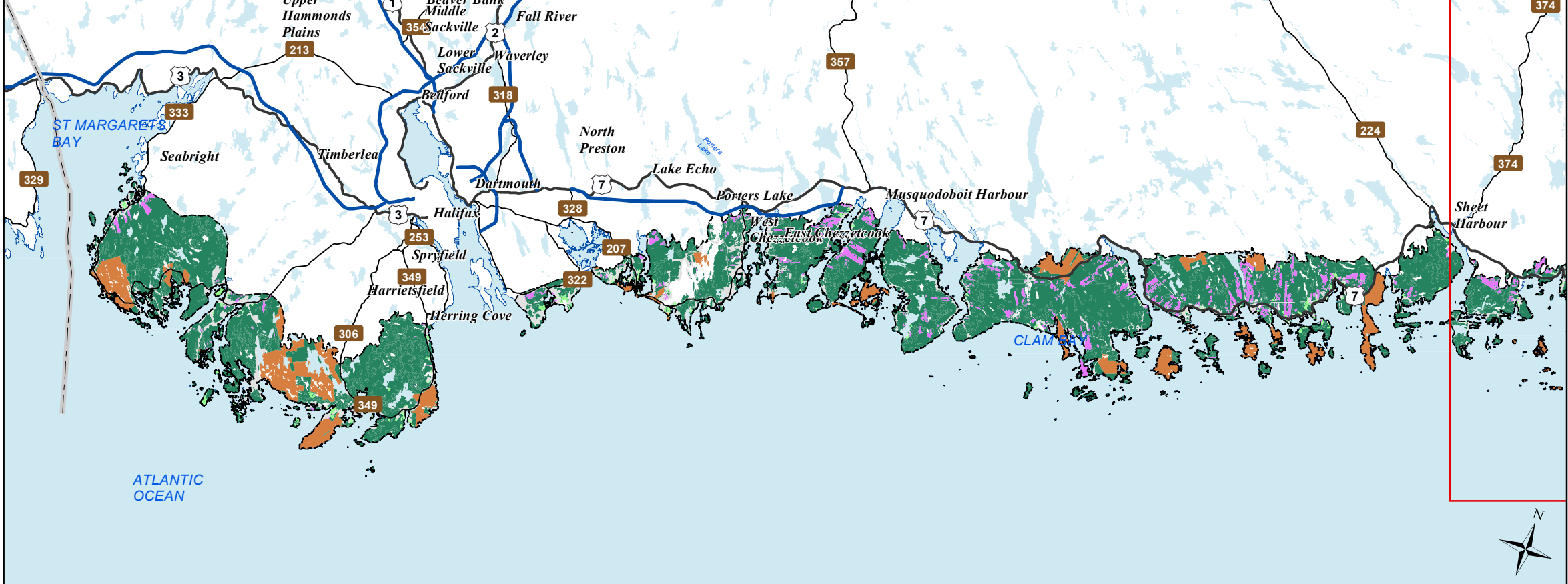
**Disclaimer**  
The information on this map may have come from a variety of government and non-government sources and is subject to change without notice. The Nova Scotia Department of Natural Resources accepts no liability for any errors, deficiencies, or faults on this map.







West

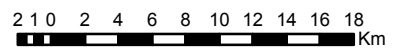


# Ecological Landscape Analysis Map 3 Ecological Emphasis Classes

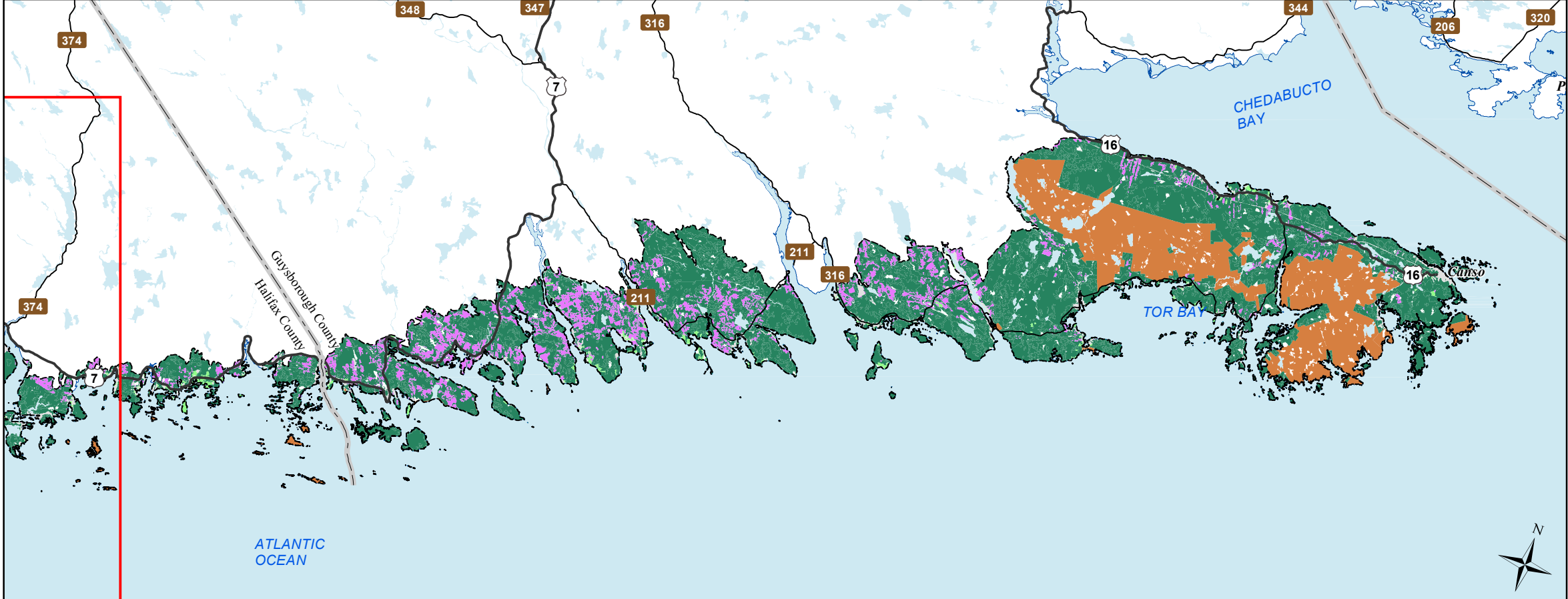
Eastern Shore - Ecodistrict 820

## Legend

- Ecodistrict Boundary
- Reserve
- Extensive
- Intensive
- Converted
- Unclassified
- Water



East



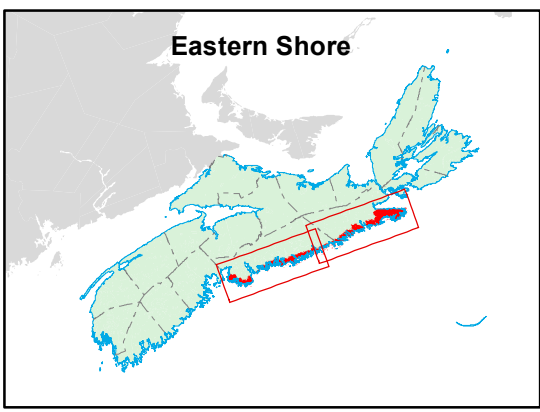
## Map Notes

Base data derived from the Nova Scotia Topographic Database (NSTDB). Copyright Province of Nova Scotia. All rights reserved. Service Nova Scotia & Municipal Relations, Nova Scotia Geomatics Centre, 160 Willow St., Amherst, Nova Scotia. Species status and locations data from Atlantic Canada Conservation Data Centre.

Additional information derived from Nova Scotia Department of Natural Resources, Geographic Information Systems (GIS) databases.

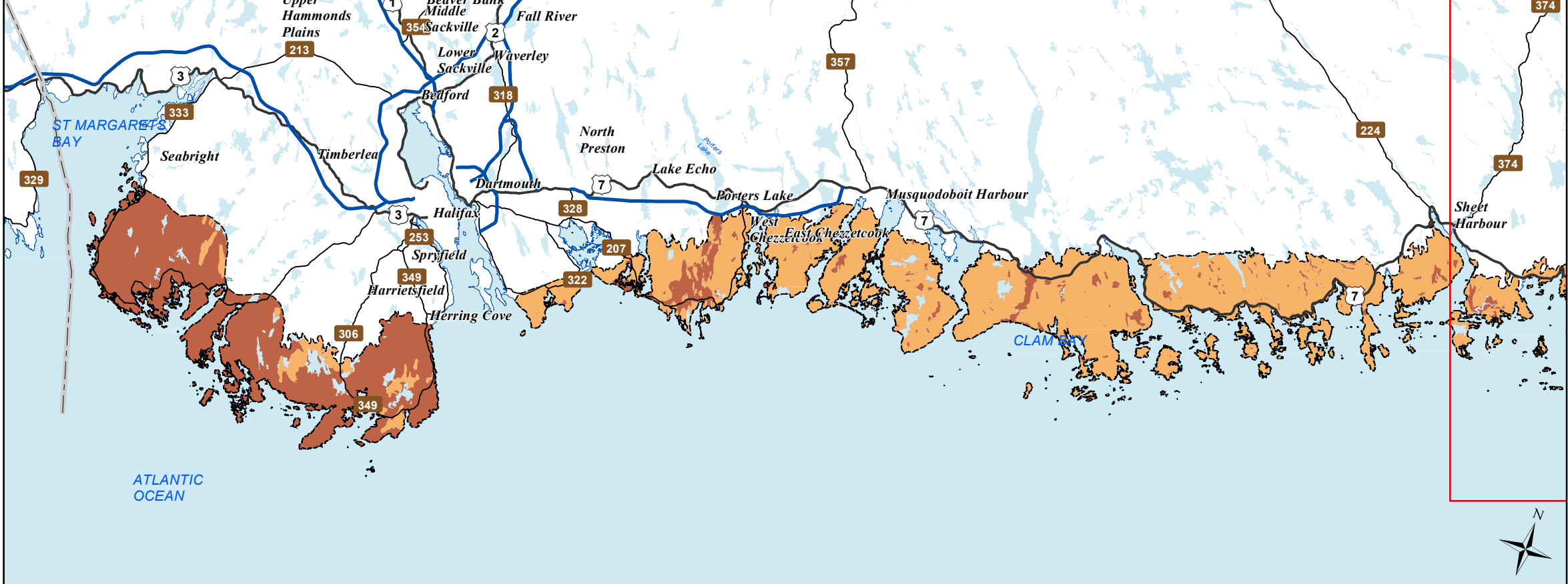
## Disclaimer

The information on this map may have come from a variety of government and non-government sources and is subject to change without notice. The Nova Scotia Department of Natural Resources accepts no liability for any errors, deficiencies, or faults on this map.





West



# Ecological Landscape Analysis

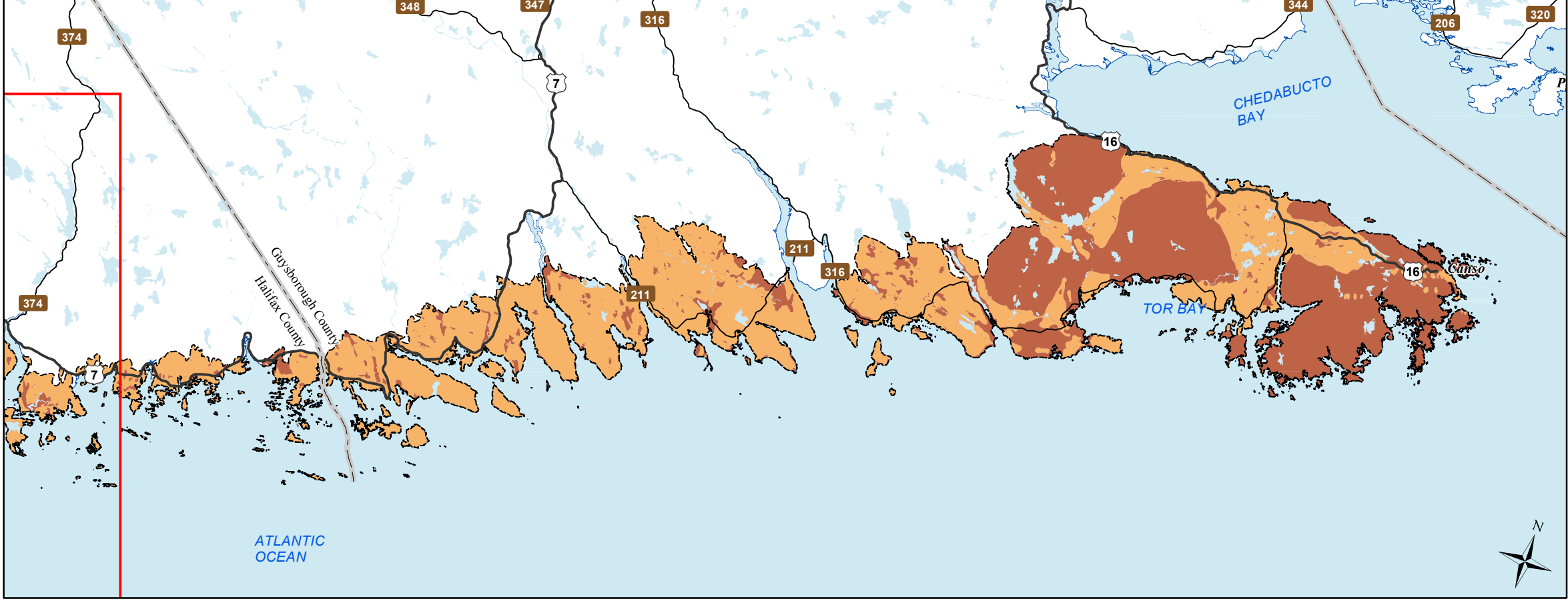
## Map 4

### Natural Disturbances

Eastern Shore - Ecodistrict 820

- Legend**
- Ecodistrict Boundary
  - Frequent
  - Open Seral
  - Water

East



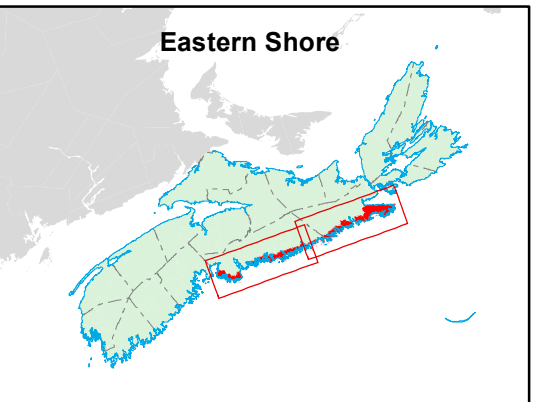
**Map Notes**

Base data derived from the Nova Scotia Topographic Database (NSTDB). Copyright Province of Nova Scotia. All rights reserved. Service Nova Scotia & Municipal Relations, Nova Scotia Geomatics Centre, 160 Willow St., Amherst, Nova Scotia. Species status and locations data from Atlantic Canada Conservation Data Centre.

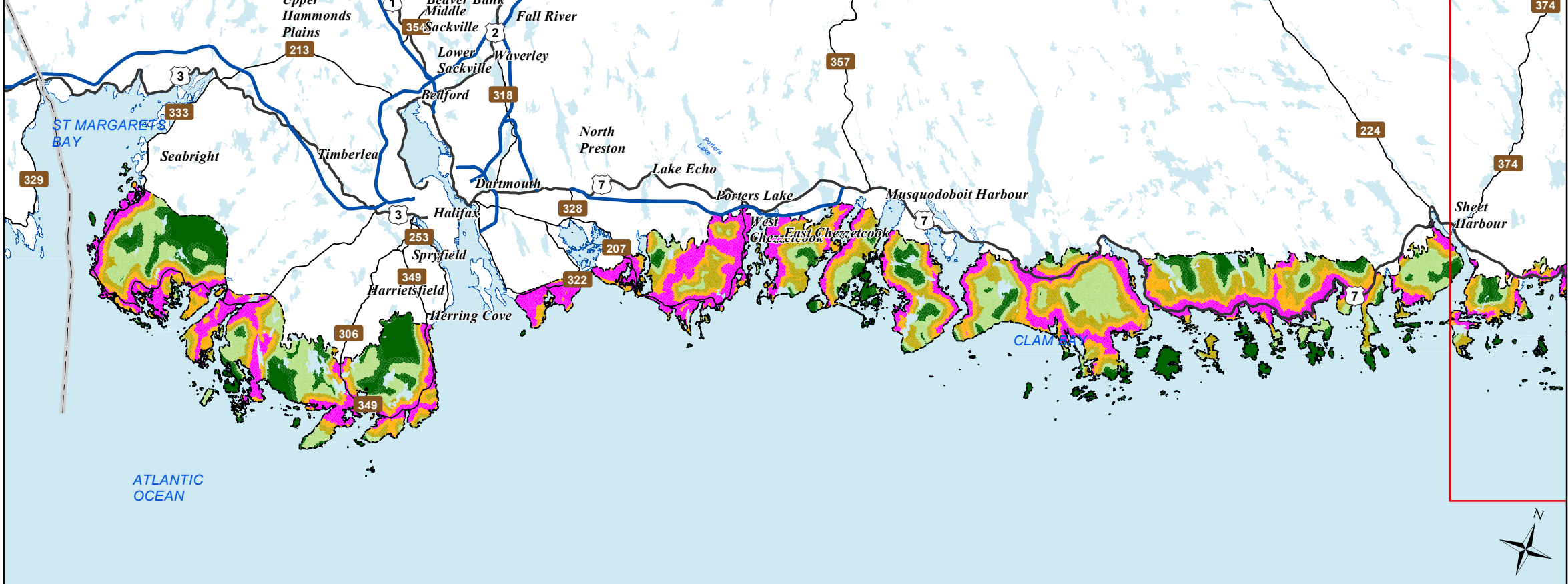
Additional information derived from Nova Scotia Department of Natural Resources, Geographic Information Systems (GIS) databases.

**Disclaimer**

The information on this map may have come from a variety of government and non-government sources and is subject to change without notice. The Nova Scotia Department of Natural Resources accepts no liability for any errors, deficiencies, or faults on this map.



West



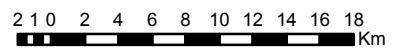
# Ecological Landscape Analysis

## Map 5

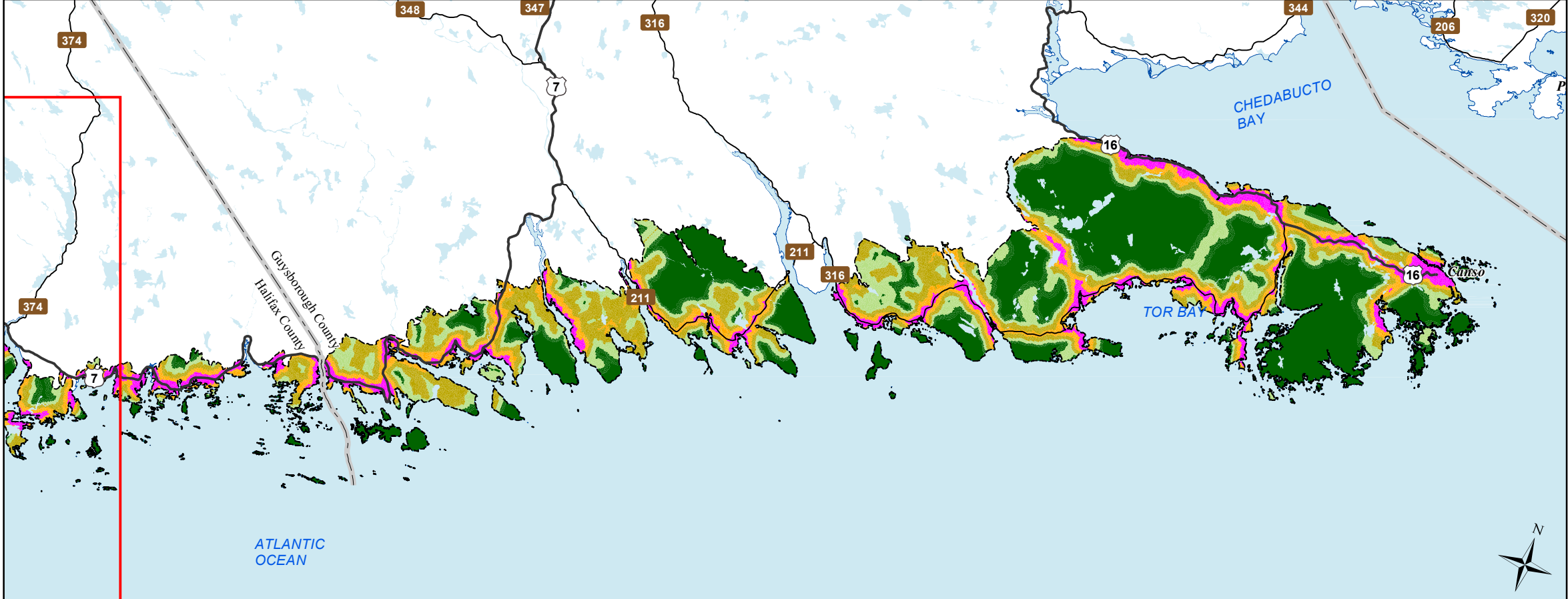
### Road Index

Eastern Shore - Ecodistrict 820

- Legend**
- Ecodistrict Boundary
  - Remote
  - Forest Resource
  - Mixed Rural
  - Agriculture Suburban
  - Urban
  - Water



East



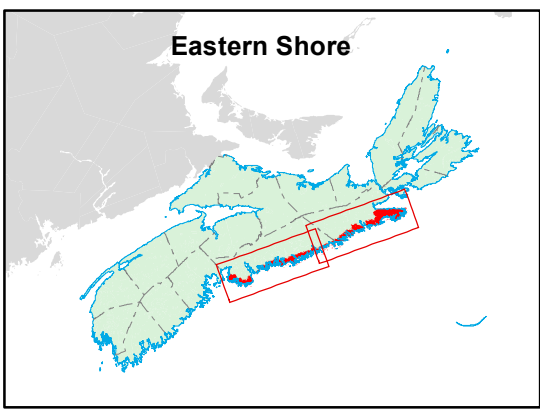
**Map Notes**

Base data derived from the Nova Scotia Topographic Database (NSTDB). Copyright Province of Nova Scotia. All rights reserved. Service Nova Scotia & Municipal Relations, Nova Scotia Geomatics Centre, 160 Willow St., Amherst, Nova Scotia. Species status and locations data from Atlantic Canada Conservation Data Centre.

Additional information derived from Nova Scotia Department of Natural Resources, Geographic Information Systems (GIS) databases.

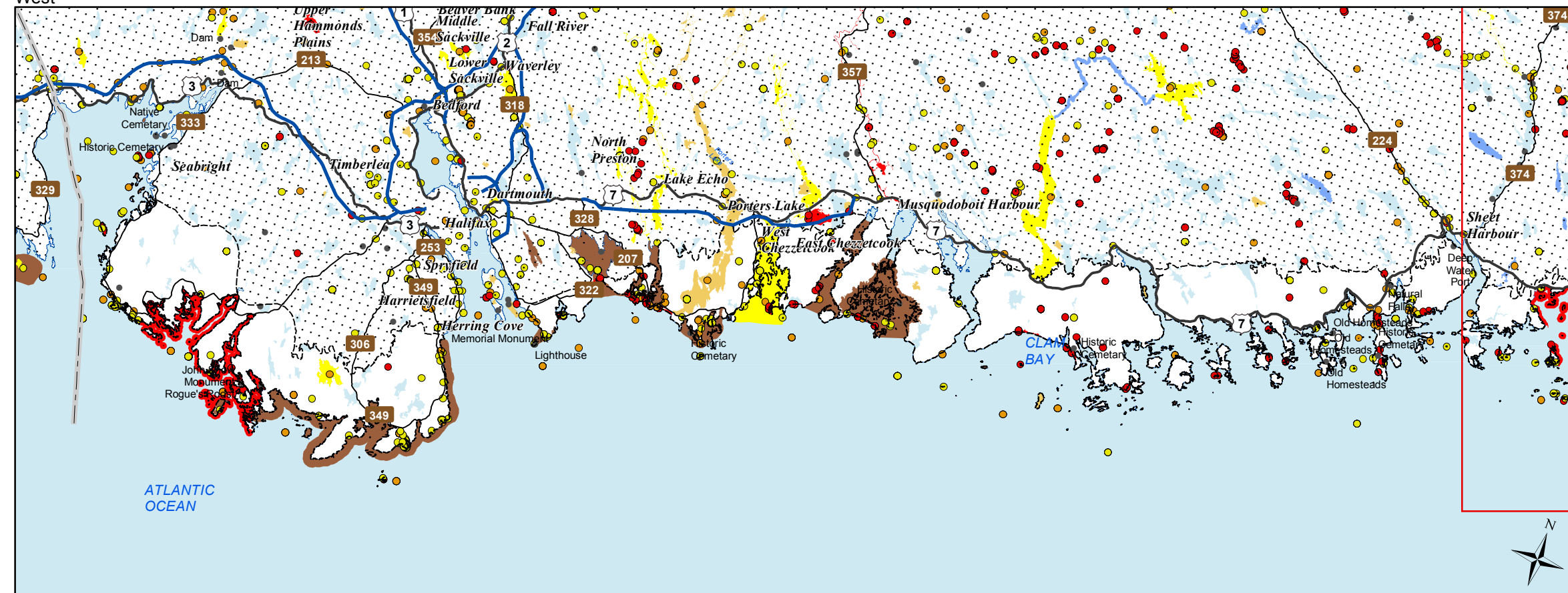
**Disclaimer**

The information on this map may have come from a variety of government and non-government sources and is subject to change without notice. The Nova Scotia Department of Natural Resources accepts no liability for any errors, deficiencies, or faults on this map.

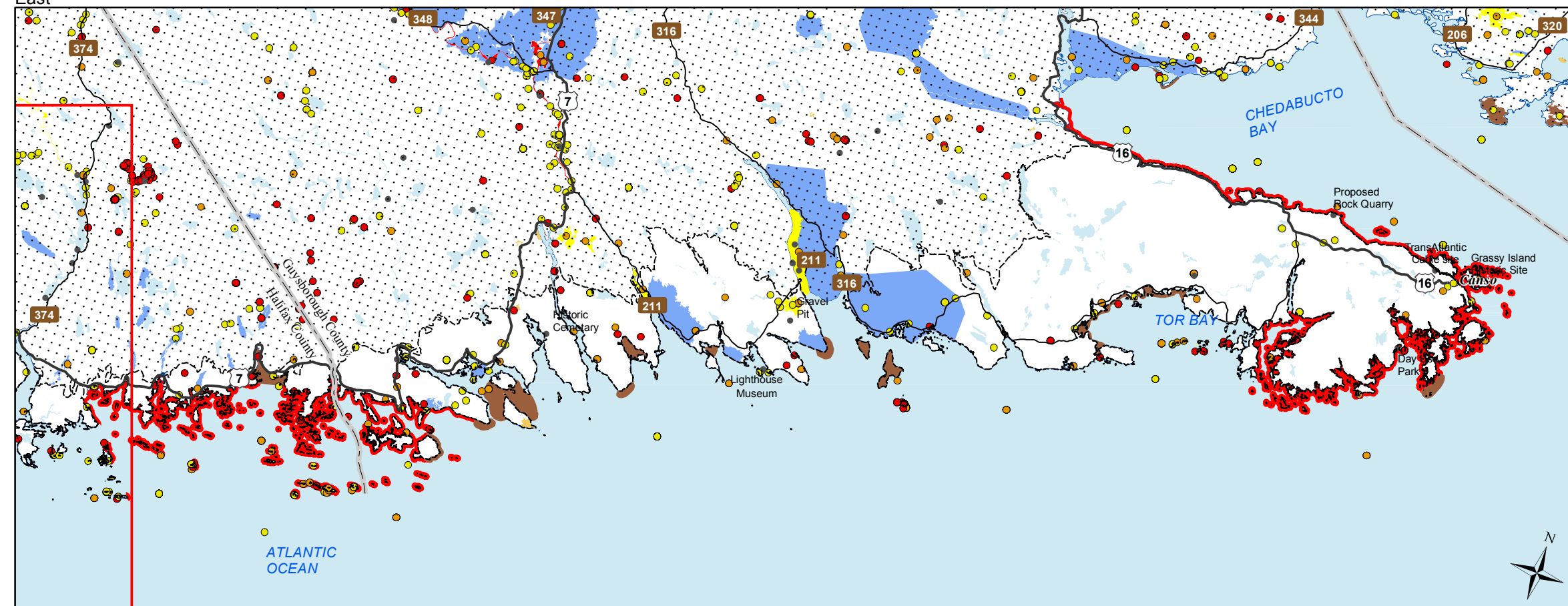




West



East



Date: 6/26/2015

## Ecological Landscape Analysis Map 6 Special Occurrences - Species

Eastern Shore - Ecodistrict 820

### Legend

- Ecodistrict Boundary
- Outside Ecodistrict
- Other Occurrences (Point of Interest)
- At Risk
- May Be At Risk
- Sensitive
- Species at risk
- Species of conservation concern
- Deer wintering
- Migratory bird
- Other significant habitat
- Water

2 10 2 4 6 8 10 12 14 16 18  
Km

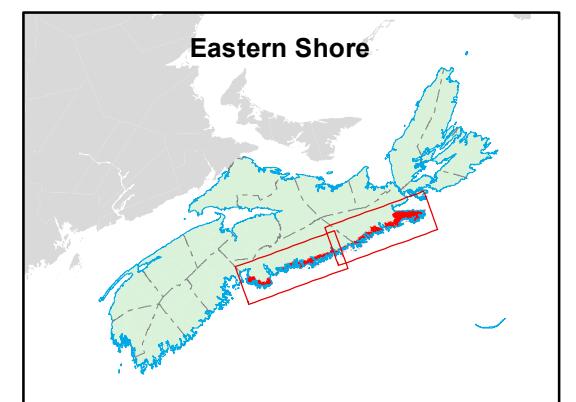
### Map Notes

Base data derived from the Nova Scotia Topographic Database (NSTDB). Copyright Province of Nova Scotia. All rights reserved. Service Nova Scotia & Municipal Relations, Nova Scotia Geomatics Centre, 160 Willow St., Amherst, Nova Scotia. Species status and locations data from Atlantic Canada Conservation Data Centre.

Additional information derived from Nova Scotia Department of Natural Resources, Geographic Information Systems (GIS) databases.

### Disclaimer

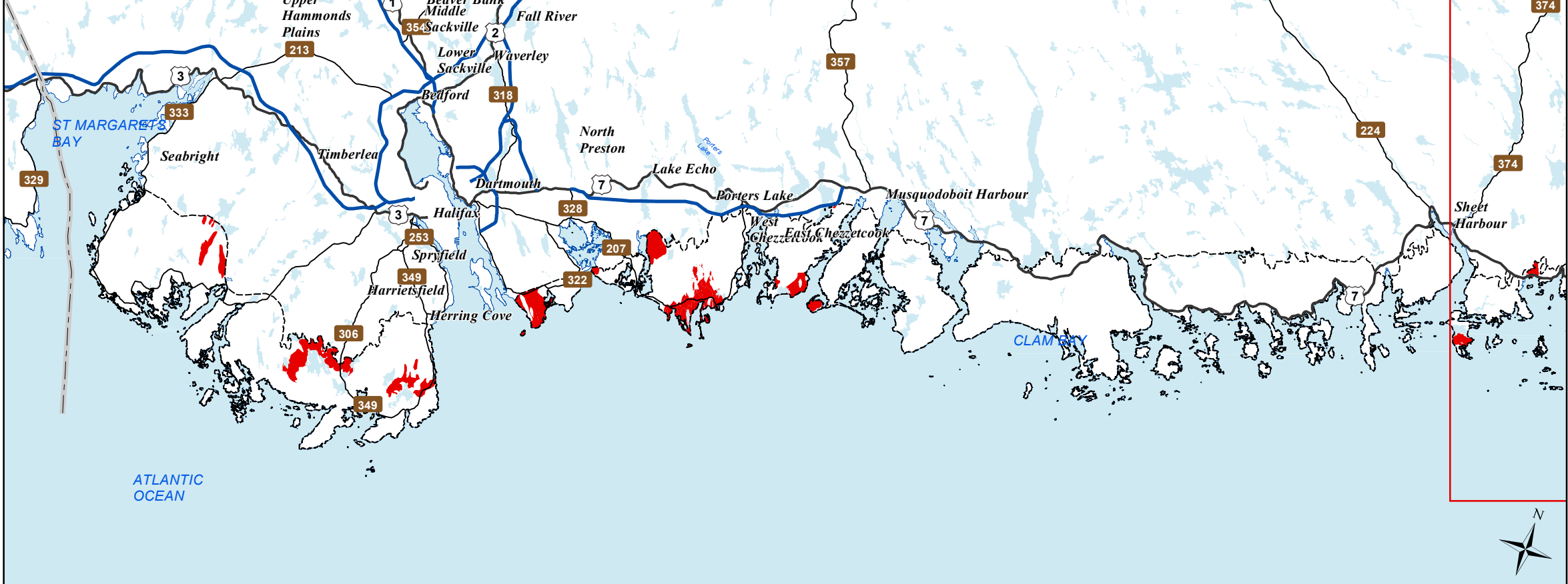
The information on this map may have come from a variety of government and non-government sources and is subject to change without notice. The Nova Scotia Department of Natural Resources accepts no liability for any errors, deficiencies, or faults on this map.



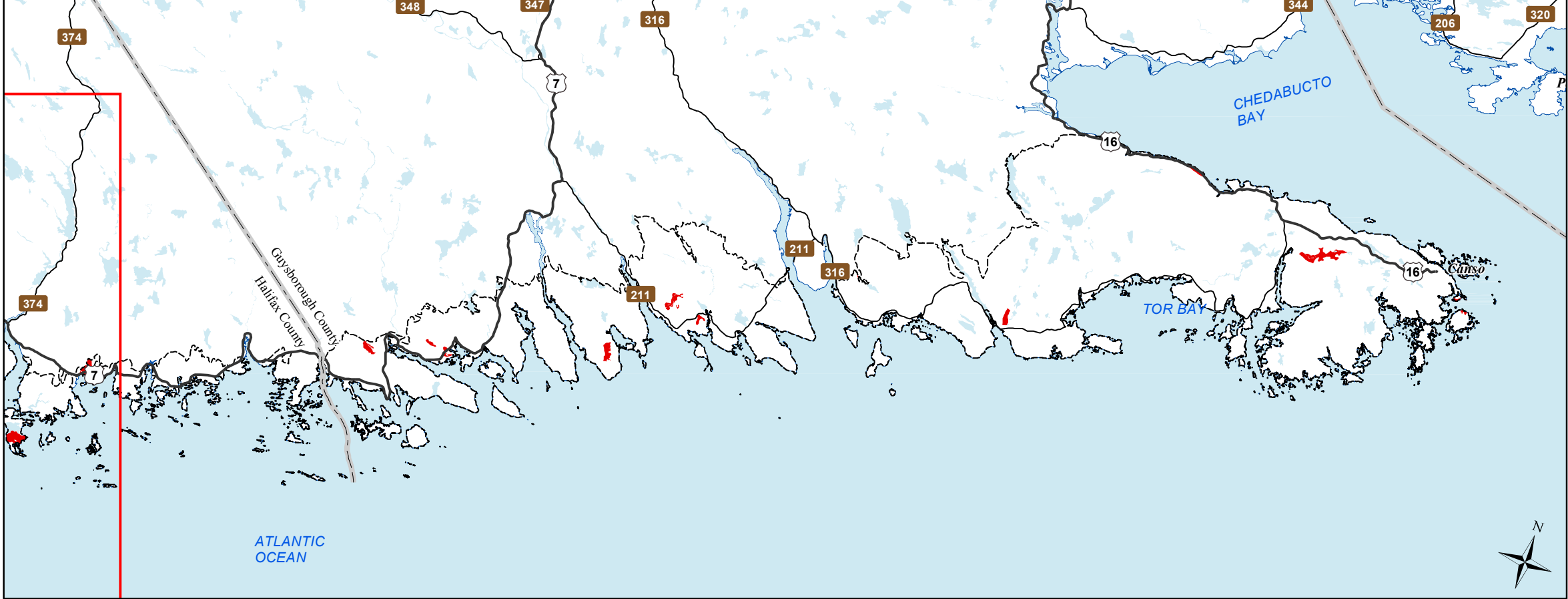
Eastern Shore

NOVA SCOTIA

West



East



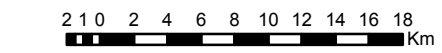
# Ecological Landscape Analysis

## Map 7

### Rare Ecosections

Eastern Shore - Ecodistrict 820

- Legend**
- Ecodistrict Boundary
  - Rare Ecosections
  - Water



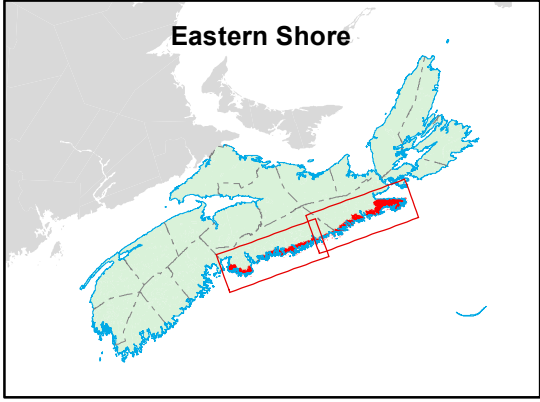
**Map Notes**

Base data derived from the Nova Scotia Topographic Database (NSTDB). Copyright Province of Nova Scotia. All rights reserved. Service Nova Scotia & Municipal Relations, Nova Scotia Geomatics Centre, 160 Willow St., Amherst, Nova Scotia. Species status and locations data from Atlantic Canada Conservation Data Centre.

Additional information derived from Nova Scotia Department of Natural Resources, Geographic Information Systems (GIS) databases.

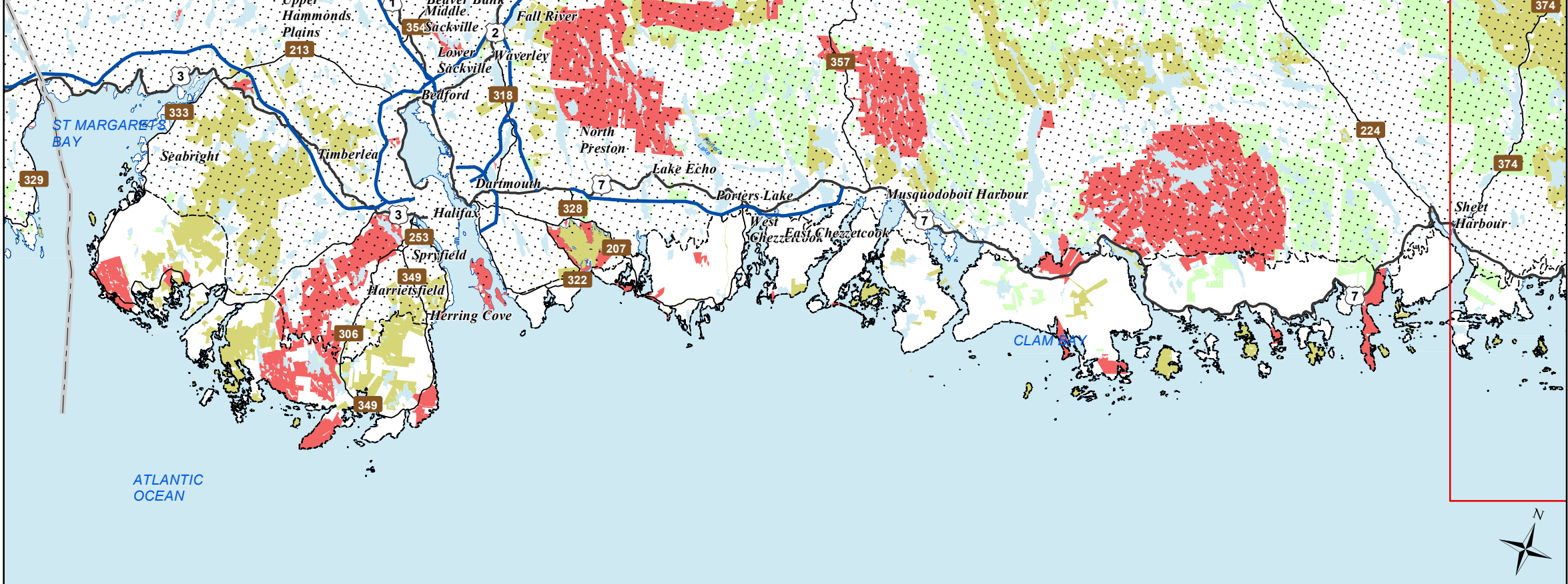
**Disclaimer**

The information on this map may have come from a variety of government and non-government sources and is subject to change without notice. The Nova Scotia Department of Natural Resources accepts no liability for any errors, deficiencies, or faults on this map.

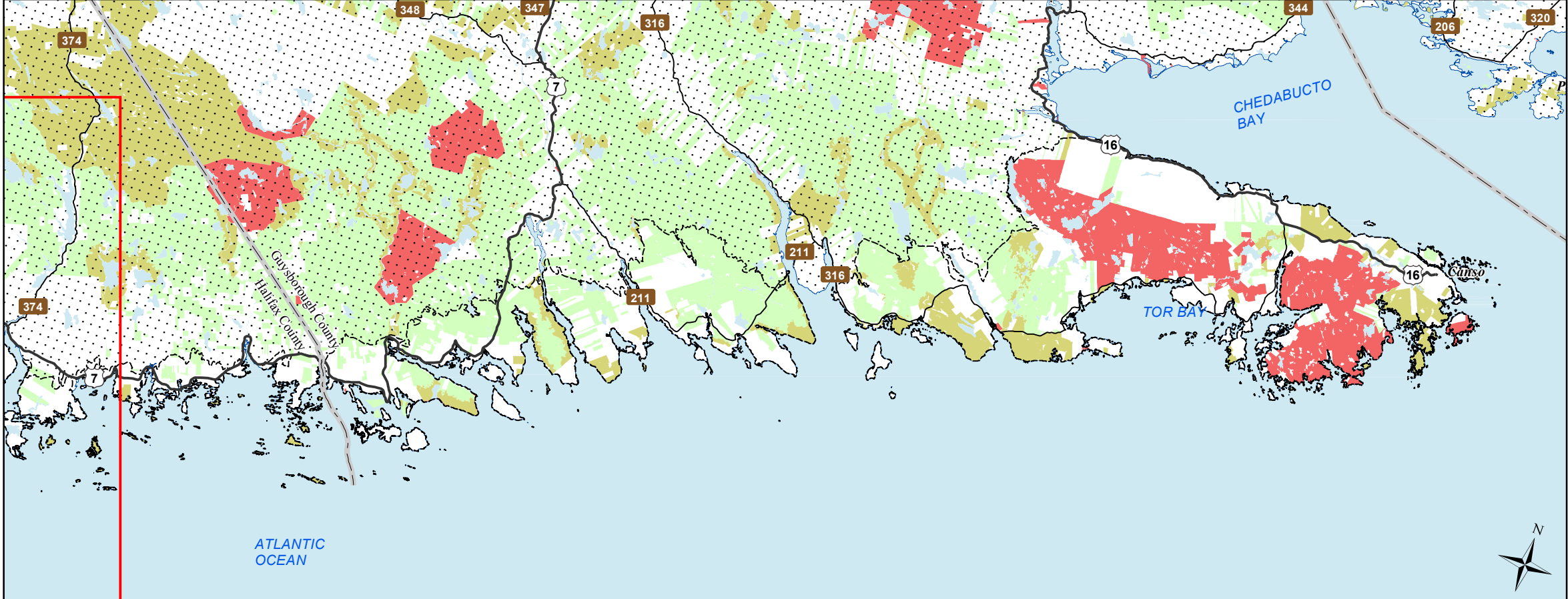




West



East



# Ecological Landscape Analysis

## Map 8

### IRM Classes

Eastern Shore - Ecodistrict 820

**Legend**

- Ecodistrict Boundary
- C1 - General Resource Use
- C2 - Multiple and Adaptive Resource Use
- C3 - Protected and Limited Use
- Water

2 10 2 4 6 8 10 12 14 16 18 Km

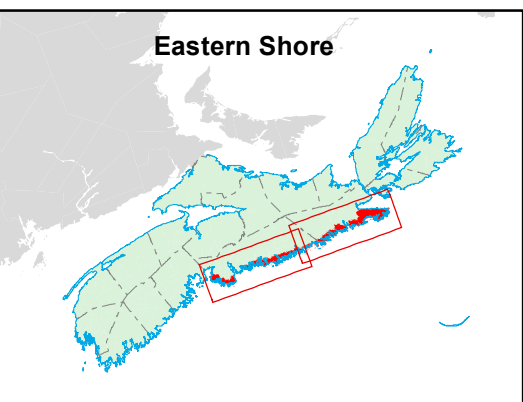
**Map Notes**

Base data derived from the Nova Scotia Topographic Database (NSTDB). Copyright Province of Nova Scotia. All rights reserved. Service Nova Scotia & Municipal Relations, Nova Scotia Geomatics Centre, 160 Willow St., Amherst, Nova Scotia. Species status and locations data from Atlantic Canada Conservation Data Centre.

Additional information derived from Nova Scotia Department of Natural Resources, Geographic Information Systems (GIS) databases.

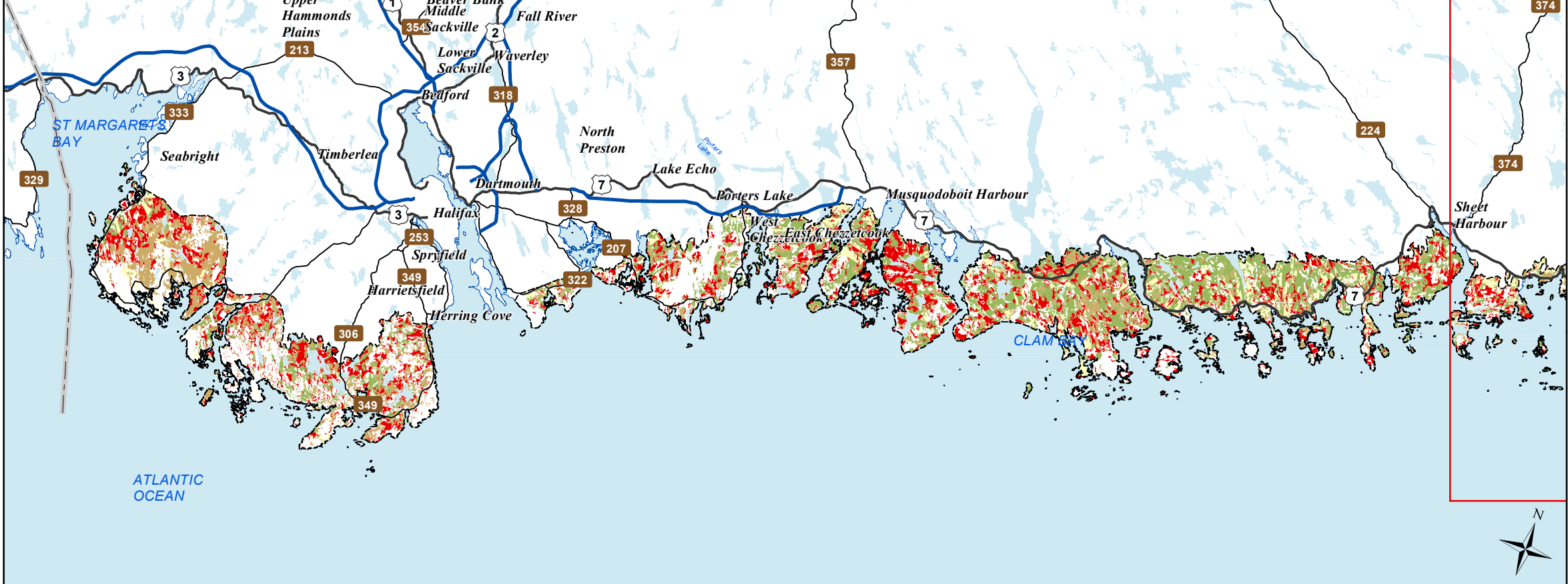
**Disclaimer**

The information on this map may have come from a variety of government and non-government sources and is subject to change without notice. The Nova Scotia Department of Natural Resources accepts no liability for any errors, deficiencies, or faultson this map.





West



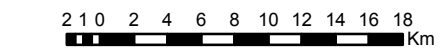
# Ecological Landscape Analysis

## Map 9

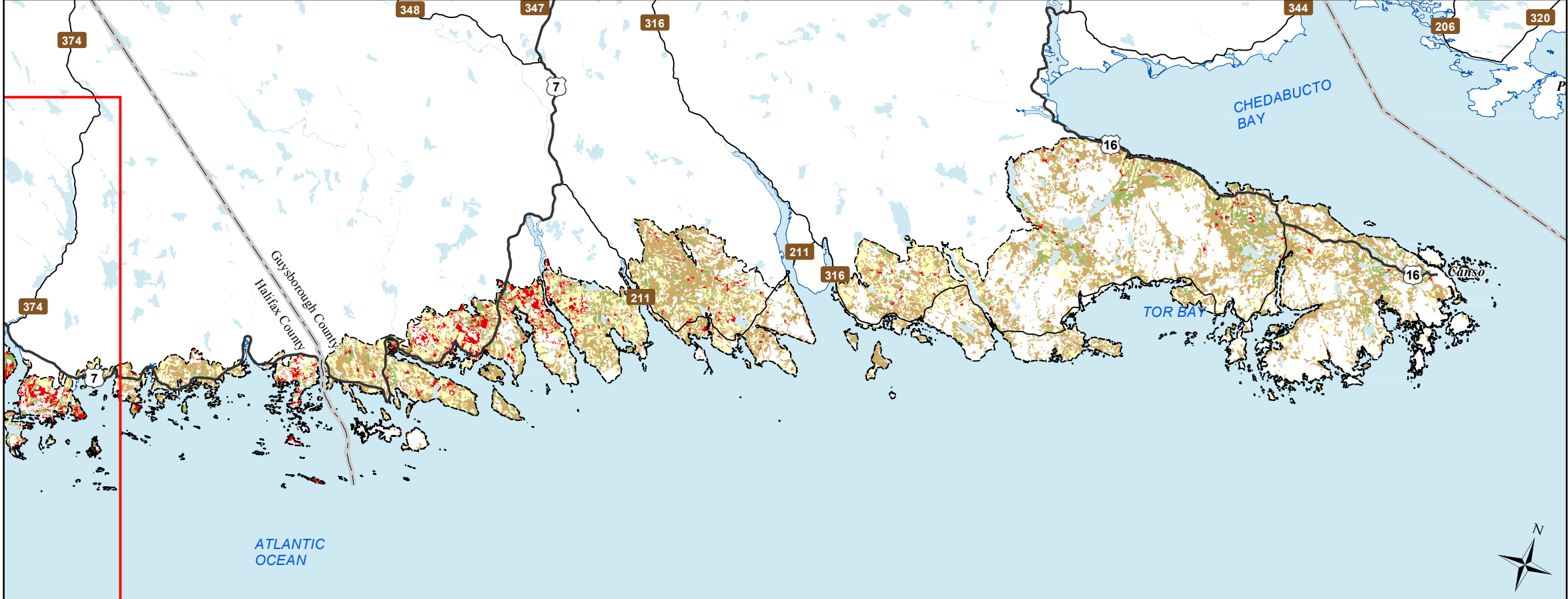
### Development Classes

Eastern Shore - Ecodistrict 820

- Legend**
- Ecodistrict Boundary
  - Not forested
  - Establishment
  - Young Forest
  - Mature Timber
  - Multi-Aged / Old Forest
  - Water



East



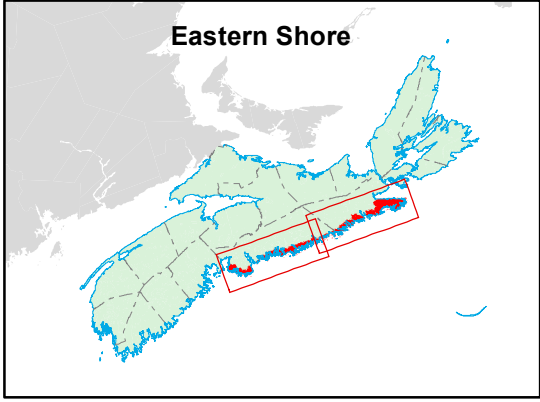
**Map Notes**

Base data derived from the Nova Scotia Topographic Database (NSTDB). Copyright Province of Nova Scotia. All rights reserved. Service Nova Scotia & Municipal Relations, Nova Scotia Geomatics Centre, 160 Willow St., Amherst, Nova Scotia. Species status and locations data from Atlantic Canada Conservation Data Centre.

Additional information derived from Nova Scotia Department of Natural Resources, Geographic Information Systems (GIS) databases.

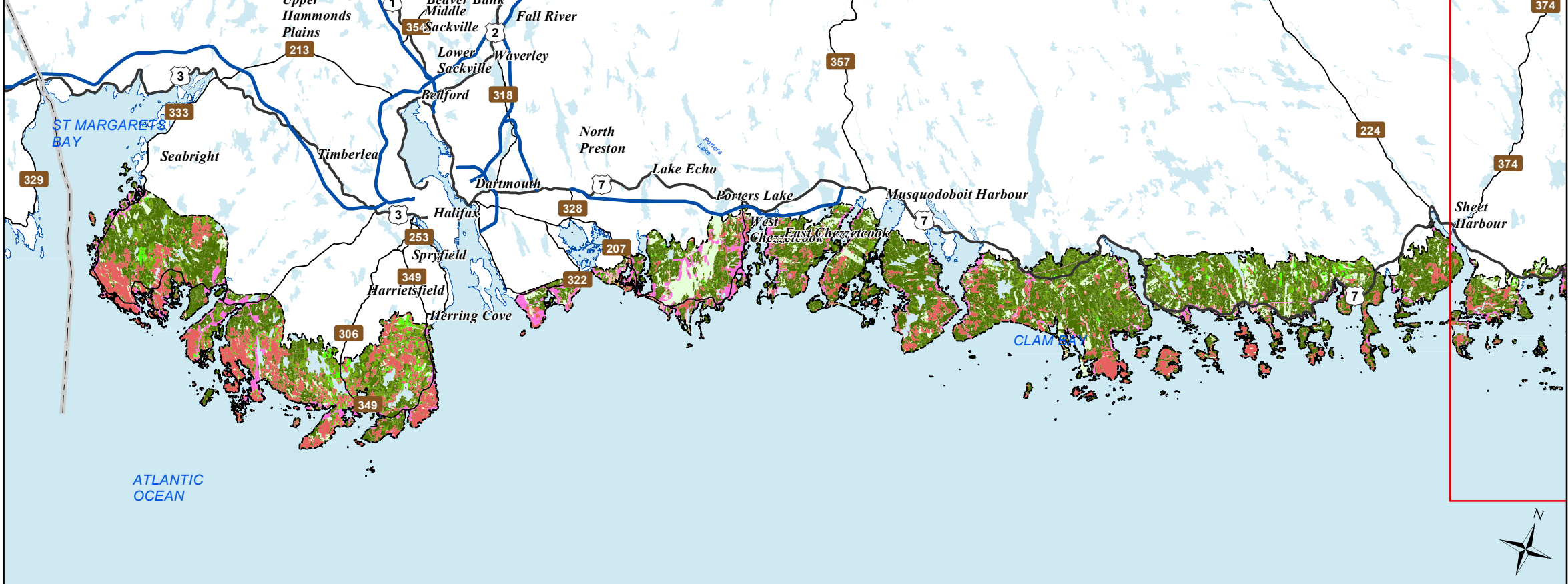
**Disclaimer**

The information on this map may have come from a variety of government and non-government sources and is subject to change without notice. The Nova Scotia Department of Natural Resources accepts no liability for any errors, deficiencies, or faultson this map.





West



# Ecological Landscape Analysis

## Map 10

### Seral Stages

Eastern Shore - Ecodistrict 820

**Legend**

--- Ecodistrict Boundary

**Ecological Land Cover**

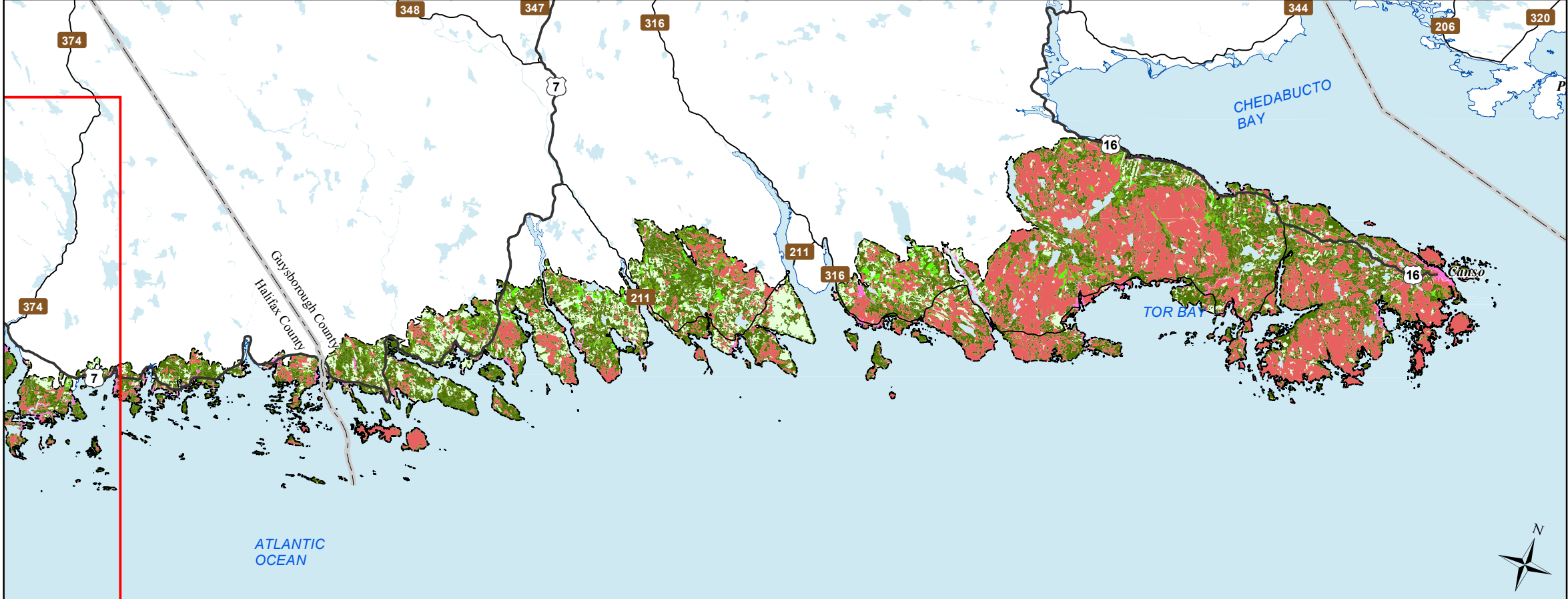
- Agriculture and Developed Vegetation
- Shrublands and Herbaceous Vegetation
- Sparse Vegetation and Naturally Unvegetated
- Urban/Industrial Vegetation and Unvegetated

**Seral Stage**

- Unclassified (e.g. recent cut)
- Early
- Mid
- Late
- Water

2 10 2 4 6 8 10 12 14 16 18 Km

East



**Map Notes**

Base data derived from the Nova Scotia Topographic Database (NSTDB). Copyright Province of Nova Scotia. All rights reserved. Service Nova Scotia & Municipal Relations, Nova Scotia Geomatics Centre, 160 Willow St., Amherst, Nova Scotia. Species status and locations data from Atlantic Canada Conservation Data Centre.

Additional information derived from Nova Scotia Department of Natural Resources, Geographic Information Systems (GIS) databases.

**Disclaimer**

The information on this map may have come from a variety of government and non-government sources and is subject to change without notice. The Nova Scotia Department of Natural Resources accepts no liability for any errors, deficiencies, or faults on this map.

