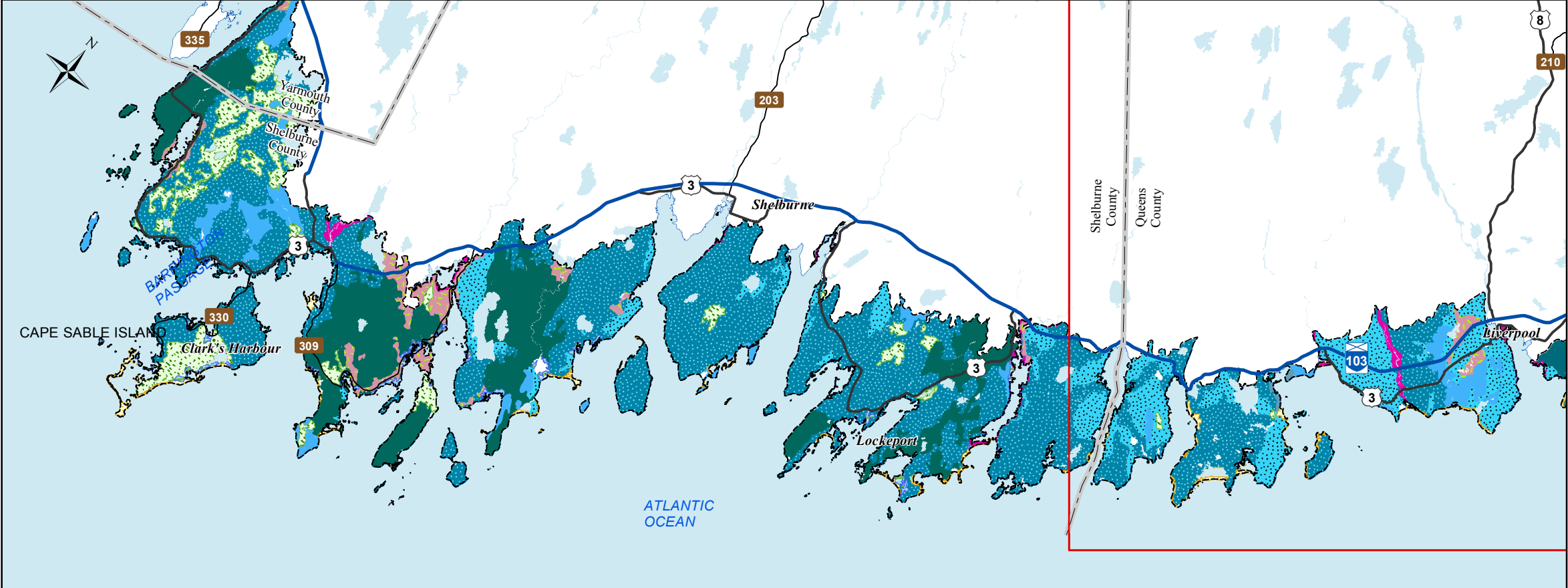
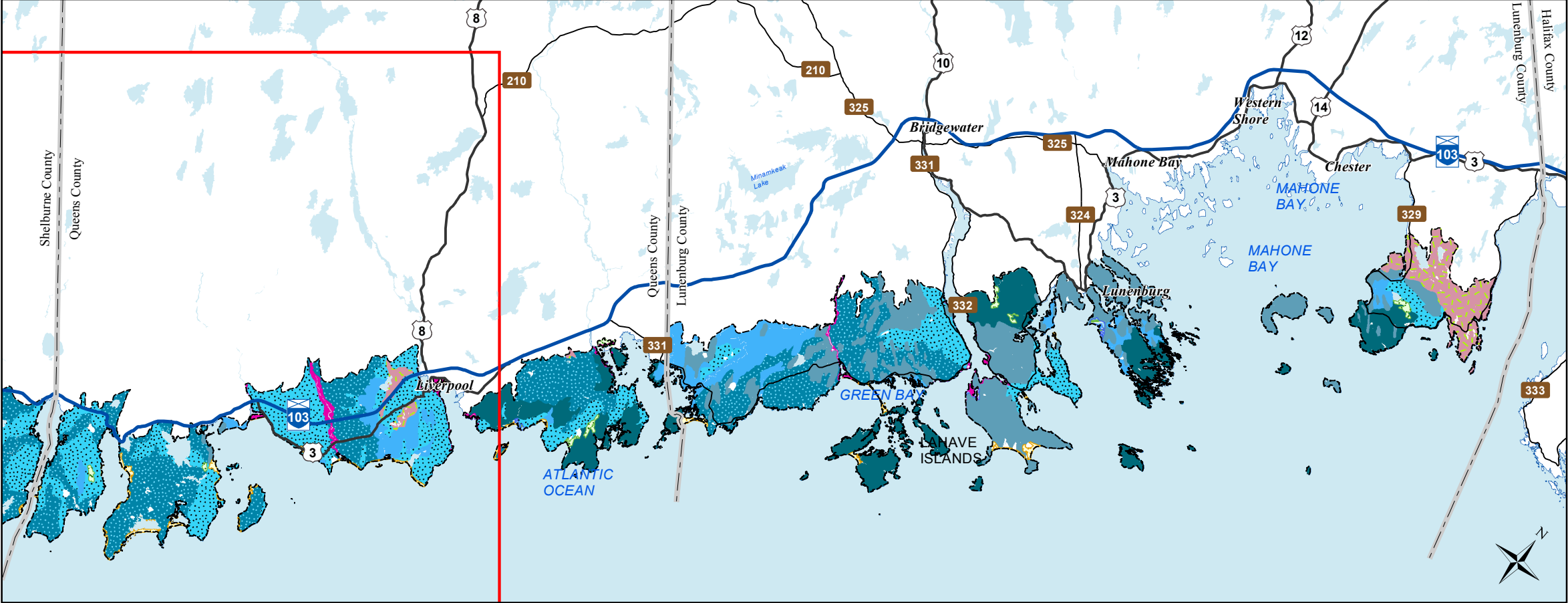


West



East

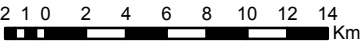


# Ecological Landscape Analysis Map A Elements

South Shore - Ecodistrict 830

## Legend

- Ecodistrict Boundary
- Valley Corridors
- Coastal Beach
- Coastal Bogs and Hummocks
- Coastal Mixedwood Hills and Drumlins
- Coastal Spruce
- Coastal Spruce Flats
- Coastal Spruce Pine Hummocks
- Coastal Spruce Pine Oak Hills and Hummocks
- Coastal Spruce Ridges
- Salt Marshes
- Wetlands
- Water



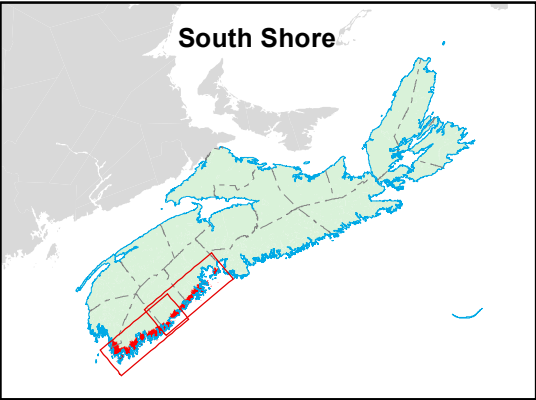
## Map Notes

Base data derived from the Nova Scotia Topographic Database (NSTDB). Copyright Province of Nova Scotia. All rights reserved. Service Nova Scotia & Municipal Relations, Nova Scotia Geomatics Centre, 160 Willow St., Amherst, Nova Scotia. Species status and locations data from Atlantic Canada Conservation Data Centre.

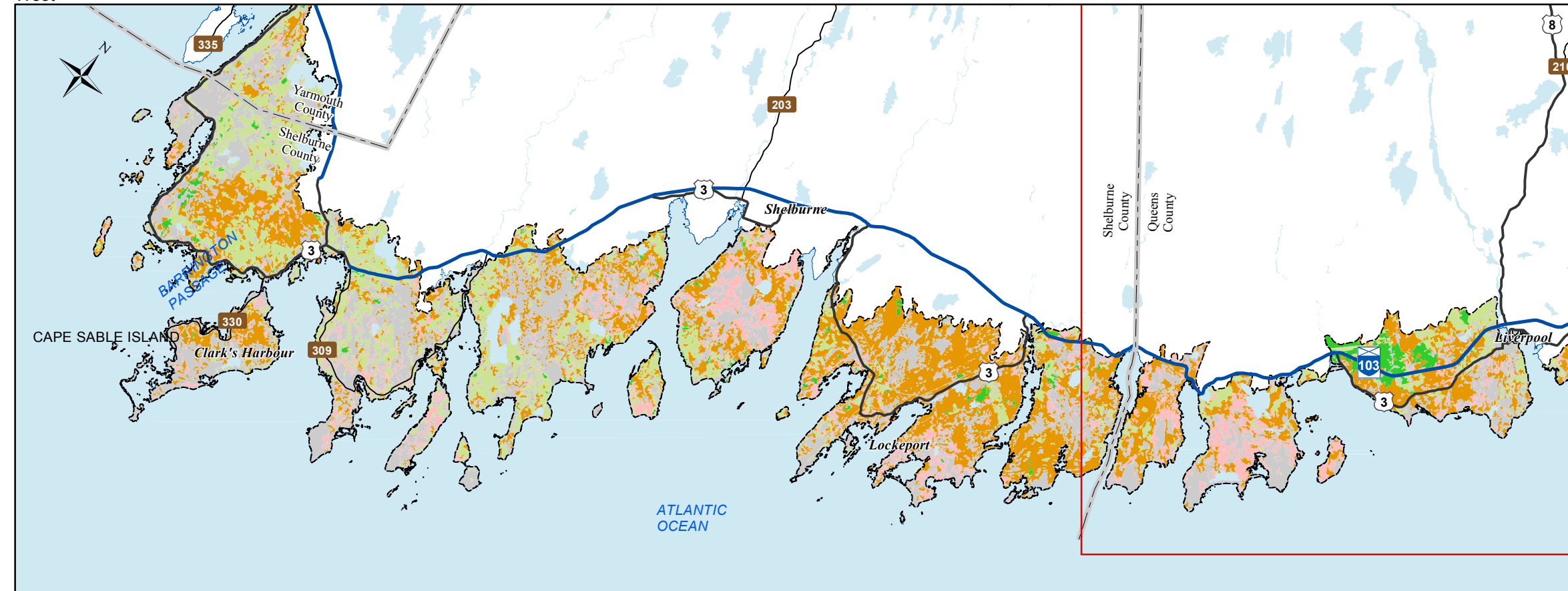
Additional information derived from Nova Scotia Department of Natural Resources, Geographic Information Systems (GIS) databases.

## Disclaimer

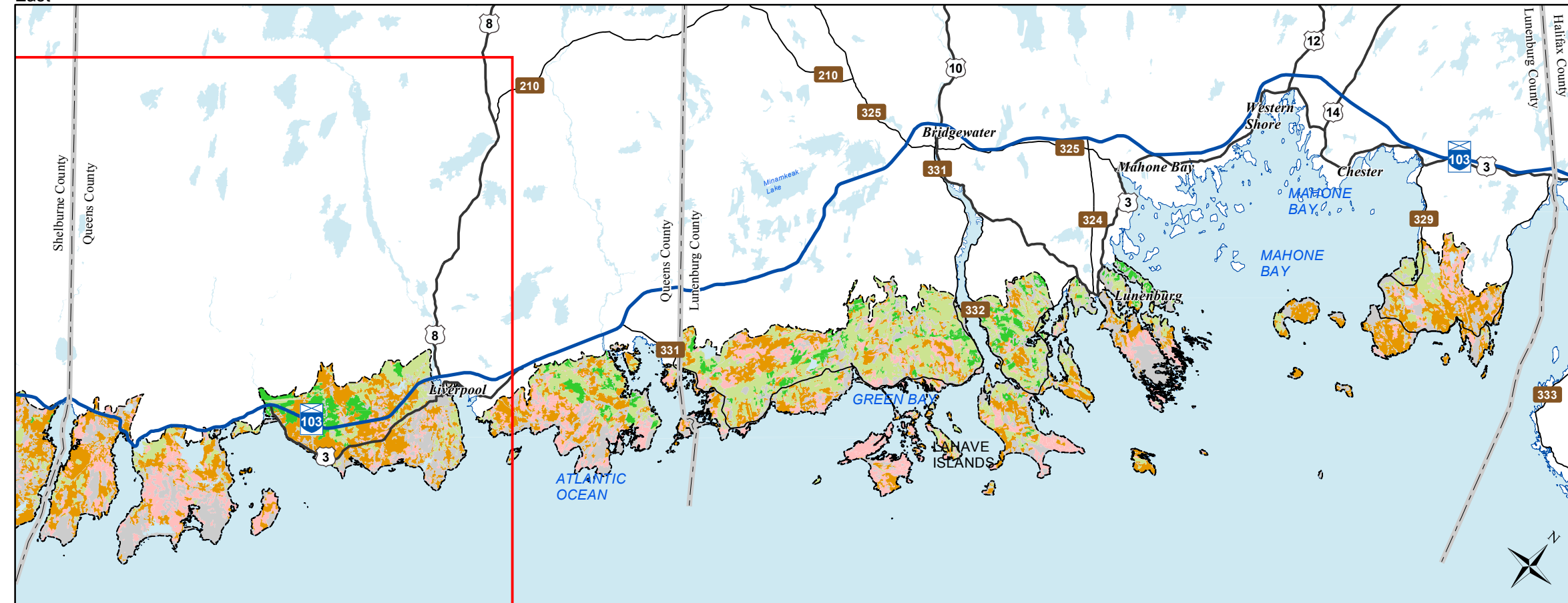
The information on this map may have come from a variety of government and non-government sources and is subject to change without notice. The Nova Scotia Department of Natural Resources accepts no liability for any errors, deficiencies, or faults on this map.



West



East



Date: 6/26/2015

## Ecological Landscape Analysis Map 1 Land Capability

South Shore - Ecodistrict 830

### Legend

- Ecodistrict Boundary
- 0 (No capability/converted)
- 1 - 3 (Low)
- 4 - (Low - Medium)
- 5 - (Medium)
- 6+ - (High)
- Water

2 1 0 2 4 6 8 10 12 14  
Km

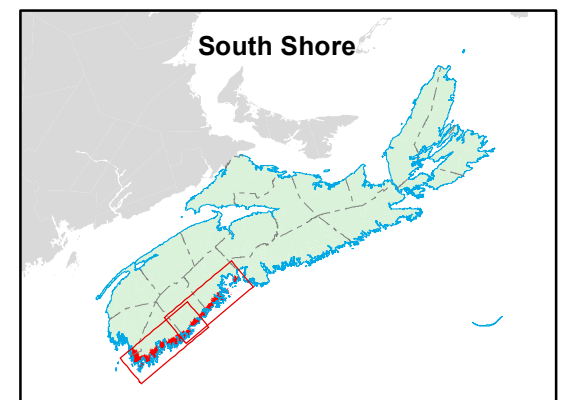
### Map Notes

Base data derived from the Nova Scotia Topographic Database (NSTDB). Copyright Province of Nova Scotia. All rights reserved. Service Nova Scotia & Municipal Relations, Nova Scotia Geomatics Centre, 160 Willow St., Amherst, Nova Scotia. Species status and locations data from Atlantic Canada Conservation Data Centre.

Additional information derived from Nova Scotia Department of Natural Resources, Geographic Information Systems (GIS) databases.

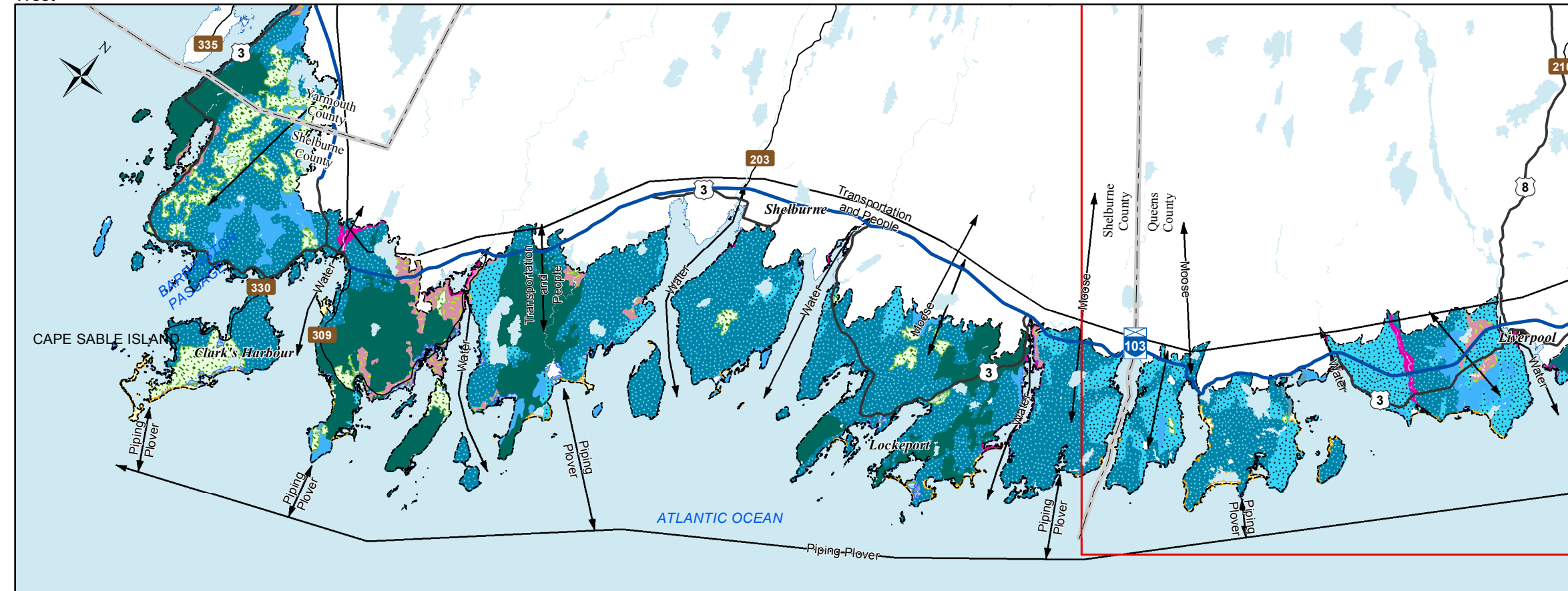
### Disclaimer

The information on this map may have come from a variety of government and non-government sources and is subject to change without notice. The Nova Scotia Department of Natural Resources accepts no liability for any errors, deficiencies, or faults on this map.

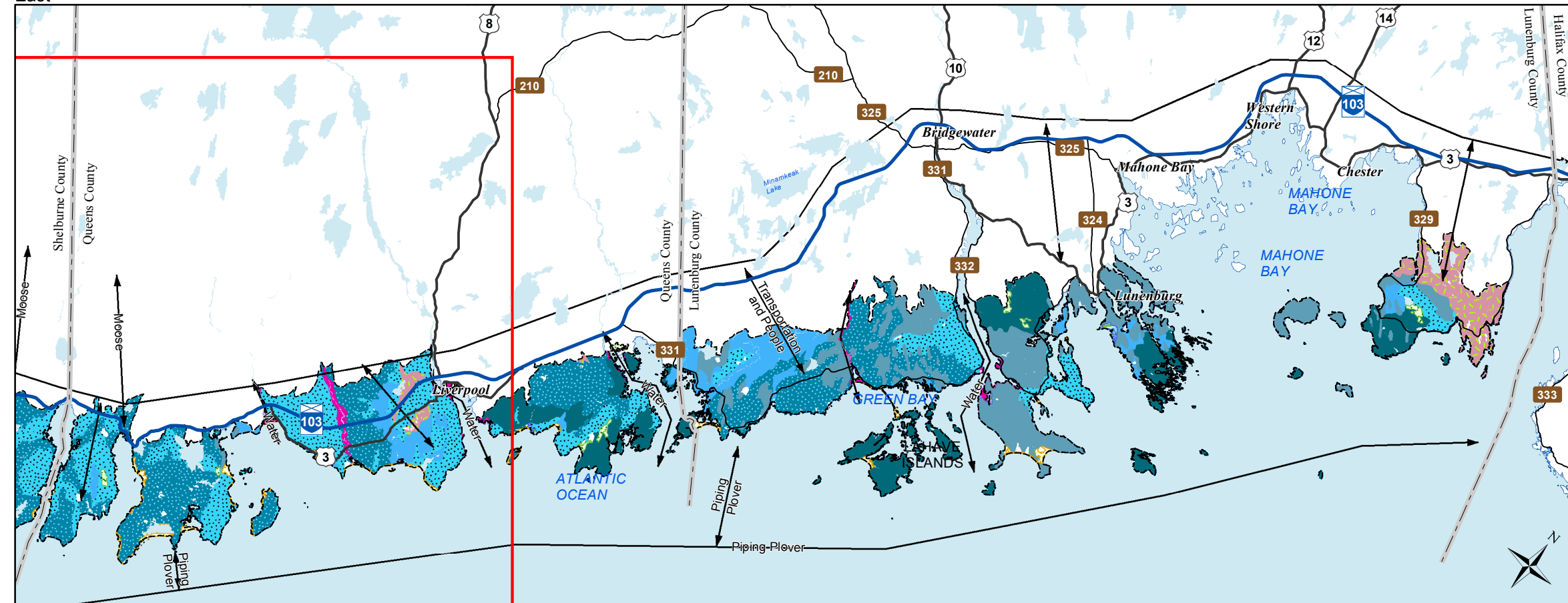


  
**NOVA SCOTIA**

West



East



Date: 6/26/2015

# Ecological Landscape Analysis

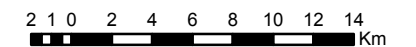
## Map 2

### Elements and Flows

South Shore - Ecodistrict 830

#### Legend

- Ecodistrict Boundary
- Flows
- Valley Corridors
- Coastal Beach
- Coastal Bogs and Hummocks
- Coastal Mixedwood Hills and Drumlins
- Coastal Spruce
- Coastal Spruce Flats
- Coastal Spruce Pine Hummocks
- Coastal Spruce Pine Oak Hills and Hummocks
- Coastal Spruce Ridges
- Salt Marshes
- Wetlands
- Water



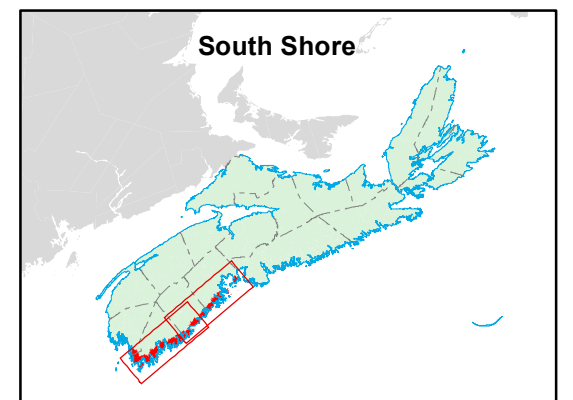
#### Map Notes

Base data derived from the Nova Scotia Topographic Database (NSTDB). Copyright Province of Nova Scotia. All rights reserved. Service Nova Scotia & Municipal Relations, Nova Scotia Geomatics Centre, 160 Willow St., Amherst, Nova Scotia. Species status and locations data from Atlantic Canada Conservation Data Centre.

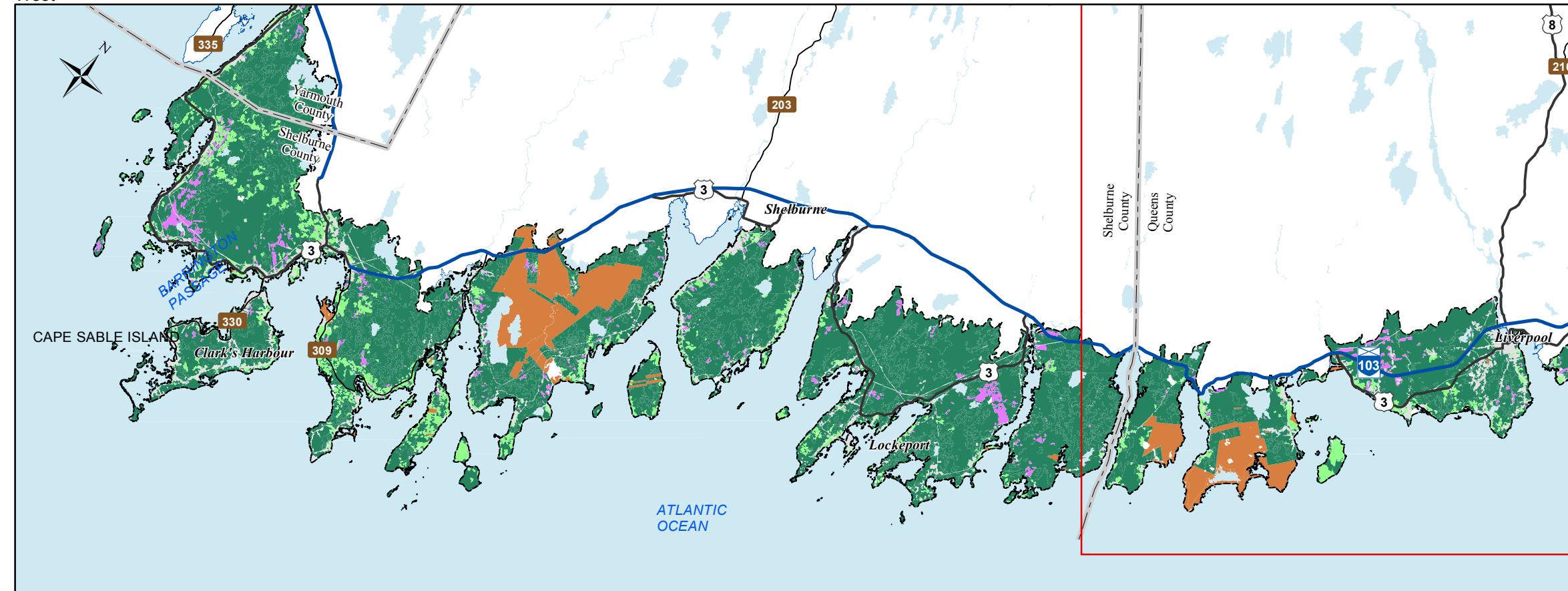
Additional information derived from Nova Scotia Department of Natural Resources, Geographic Information Systems (GIS) databases.

#### Disclaimer

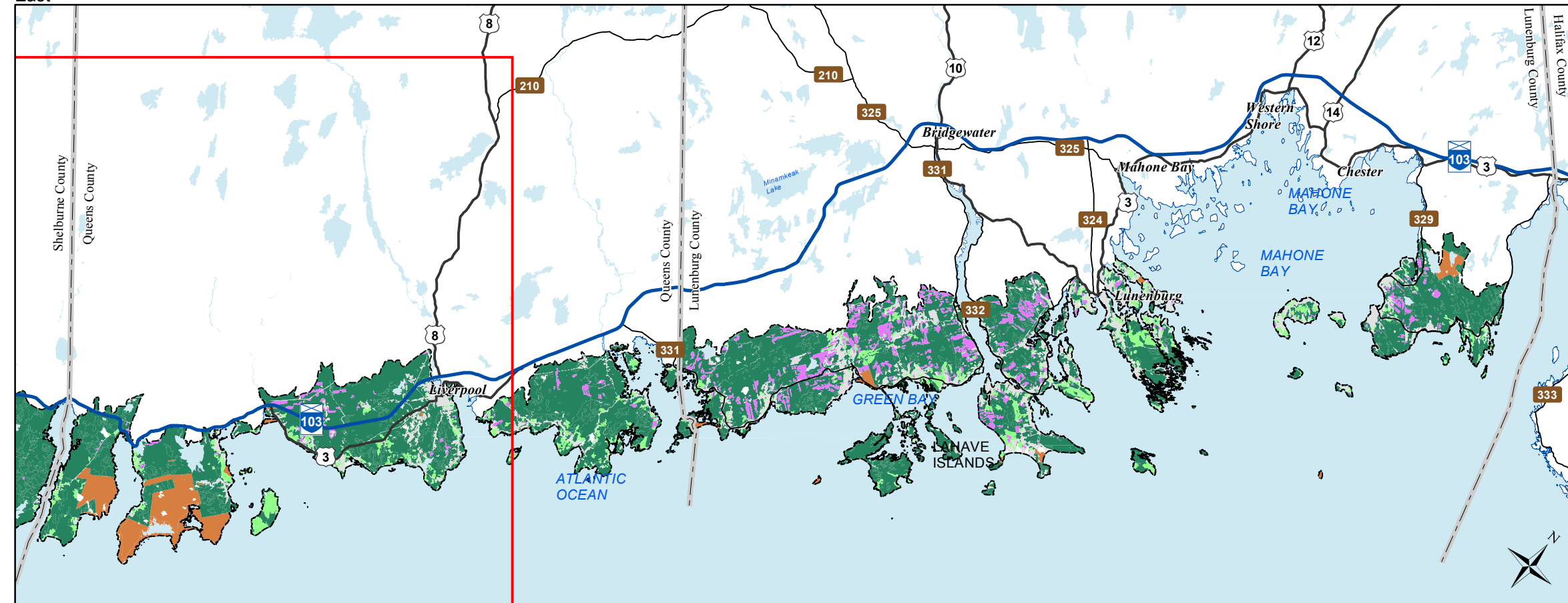
The information on this map may have come from a variety of government and non-government sources and is subject to change without notice. The Nova Scotia Department of Natural Resources accepts no liability for any errors, deficiencies, or faults on this map.



West



East



Date: 6/26/2015

## Ecological Landscape Analysis Map 3 Ecological Emphasis Classes

South Shore - Ecodistrict 830

### Legend

- Ecodistrict Boundary
- Reserve
- Extensive
- Intensive
- Converted
- Unclassified
- Water

2 1 0 2 4 6 8 10 12 14  
Km

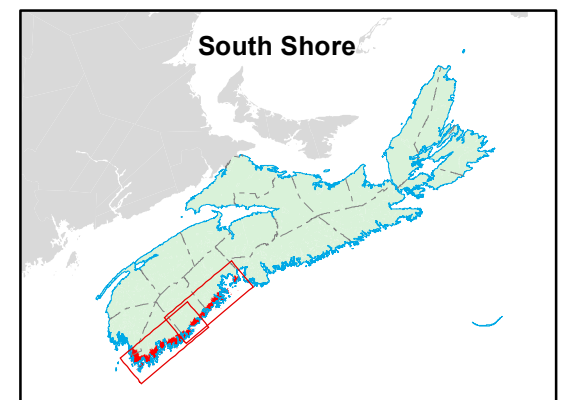
### Map Notes

Base data derived from the Nova Scotia Topographic Database (NSTDB). Copyright Province of Nova Scotia. All rights reserved. Service Nova Scotia & Municipal Relations, Nova Scotia Geomatics Centre, 160 Willow St., Amherst, Nova Scotia. Species status and locations data from Atlantic Canada Conservation Data Centre.

Additional information derived from Nova Scotia Department of Natural Resources, Geographic Information Systems (GIS) databases.

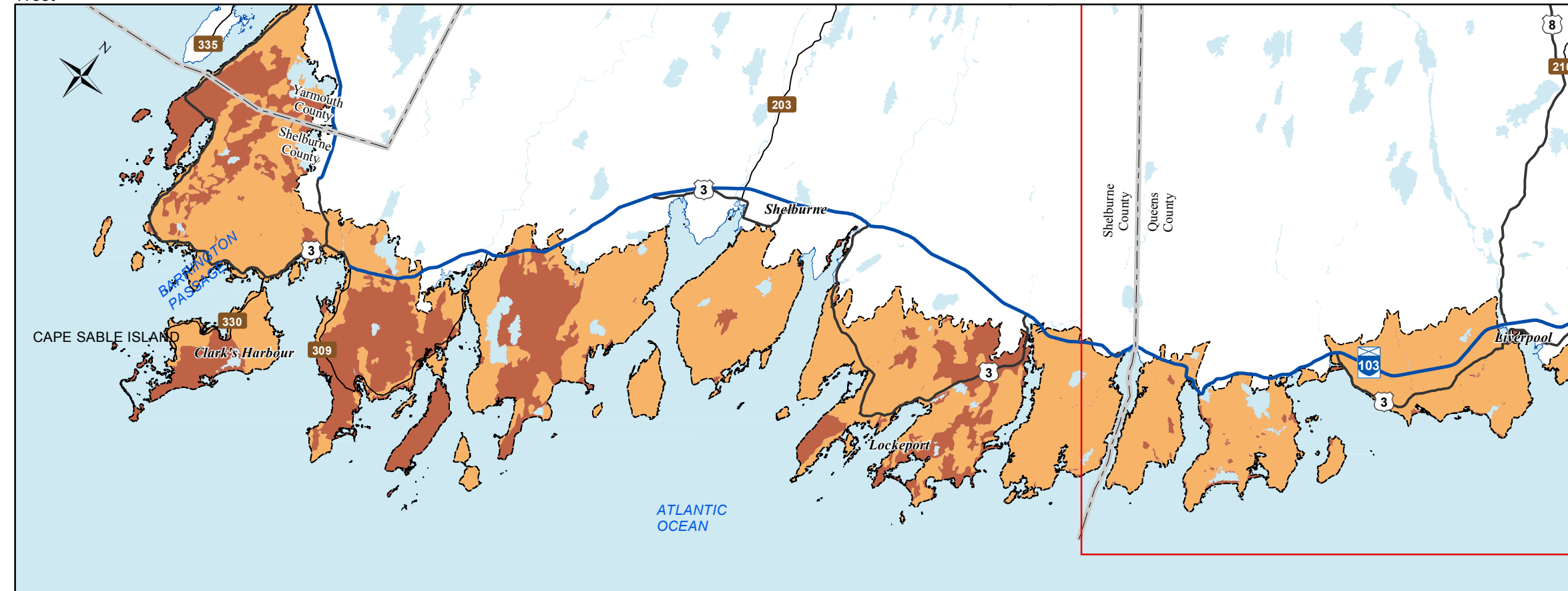
### Disclaimer

The information on this map may have come from a variety of government and non-government sources and is subject to change without notice. The Nova Scotia Department of Natural Resources accepts no liability for any errors, deficiencies, or faults on this map.

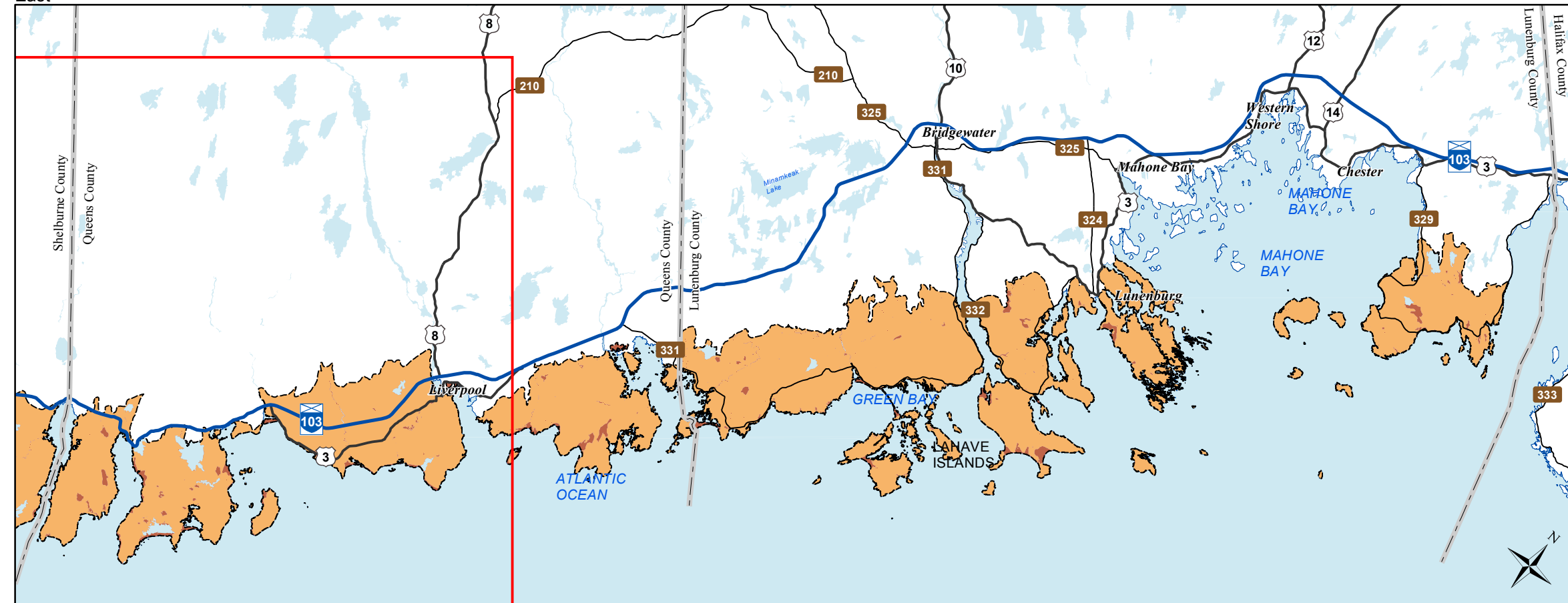


  
**NOVA SCOTIA**

West



East



## Ecological Landscape Analysis Map 4 Natural Disturbances

South Shore - Ecodistrict 830

### Legend

- Ecodistrict Boundary
- Frequent
- Open Seral
- Water

2 1 0 2 4 6 8 10 12 14  
Km

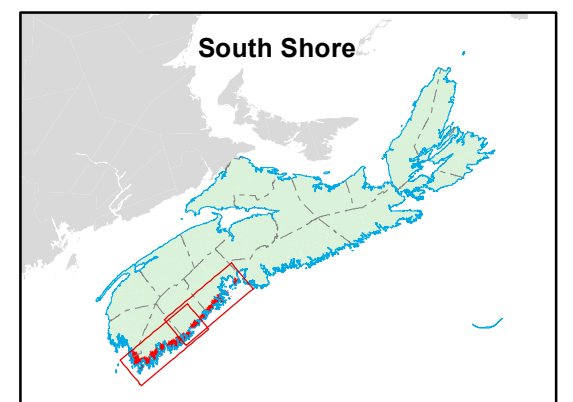
### Map Notes

Base data derived from the Nova Scotia Topographic Database (NSTDB). Copyright Province of Nova Scotia. All rights reserved. Service Nova Scotia & Municipal Relations, Nova Scotia Geomatics Centre, 160 Willow St., Amherst, Nova Scotia. Species status and locations data from Atlantic Canada Conservation Data Centre.

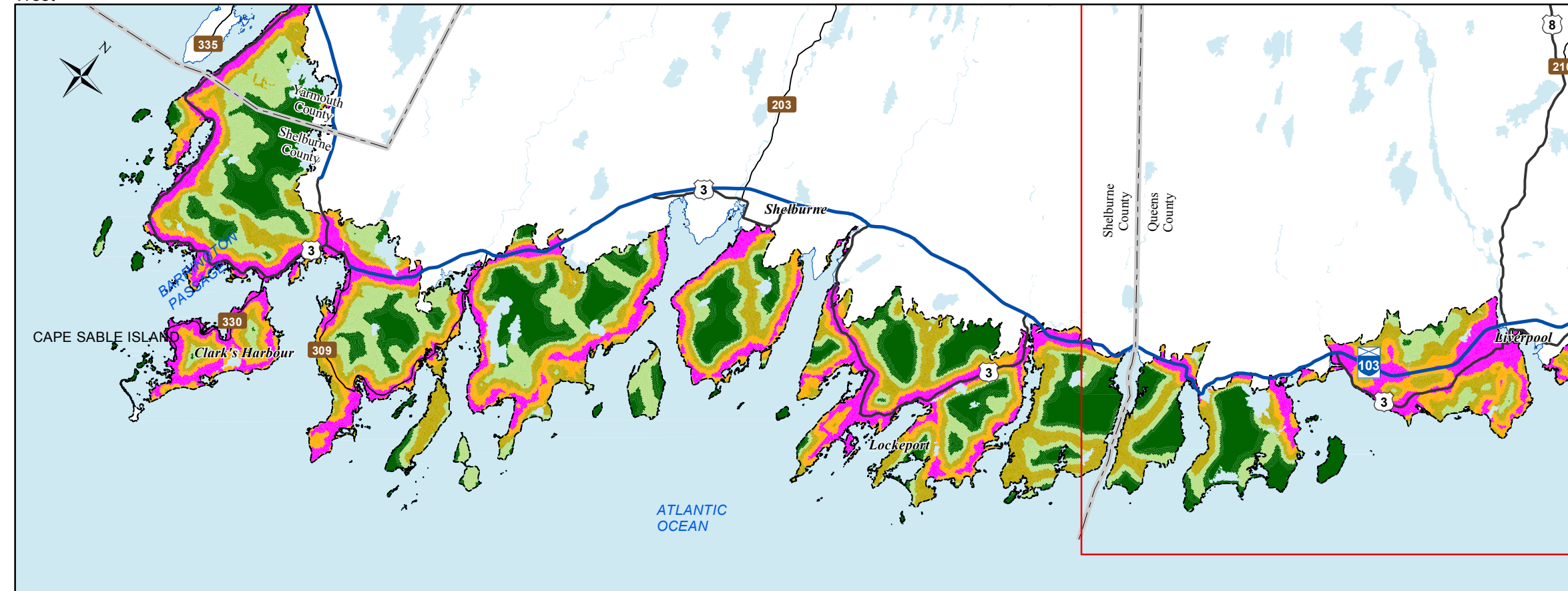
Additional information derived from Nova Scotia Department of Natural Resources, Geographic Information Systems (GIS) databases.

### Disclaimer

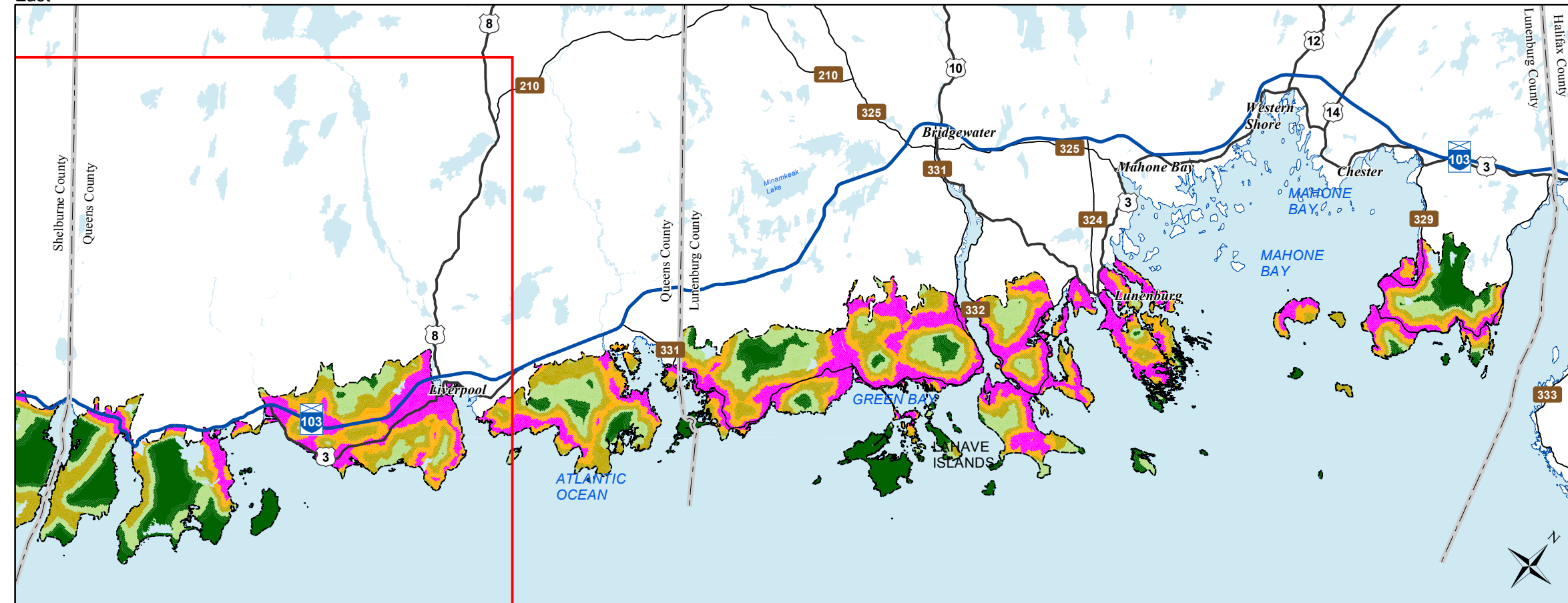
The information on this map may have come from a variety of government and non-government sources and is subject to change without notice. The Nova Scotia Department of Natural Resources accepts no liability for any errors, deficiencies, or faults on this map.



West



East



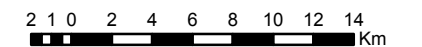
Date: 6/26/2015

## Ecological Landscape Analysis Map 5 Road Index

South Shore - Ecodistrict 830

### Legend

- Ecodistrict Boundary
- Remote
- Forest Resource
- Mixed Rural
- Agriculture Suburban
- Urban
- Water



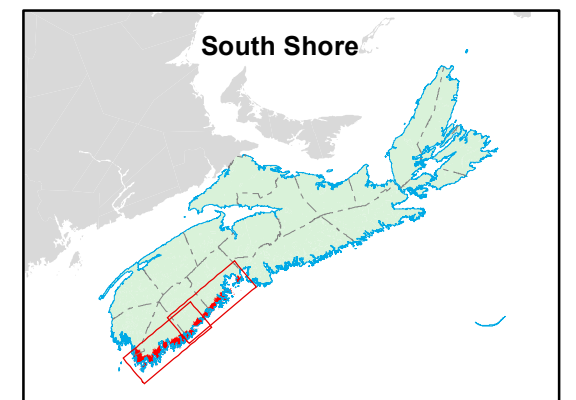
### Map Notes

Base data derived from the Nova Scotia Topographic Database (NSTDB). Copyright Province of Nova Scotia. All rights reserved. Service Nova Scotia & Municipal Relations, Nova Scotia Geomatics Centre, 160 Willow St., Amherst, Nova Scotia. Species status and locations data from Atlantic Canada Conservation Data Centre.

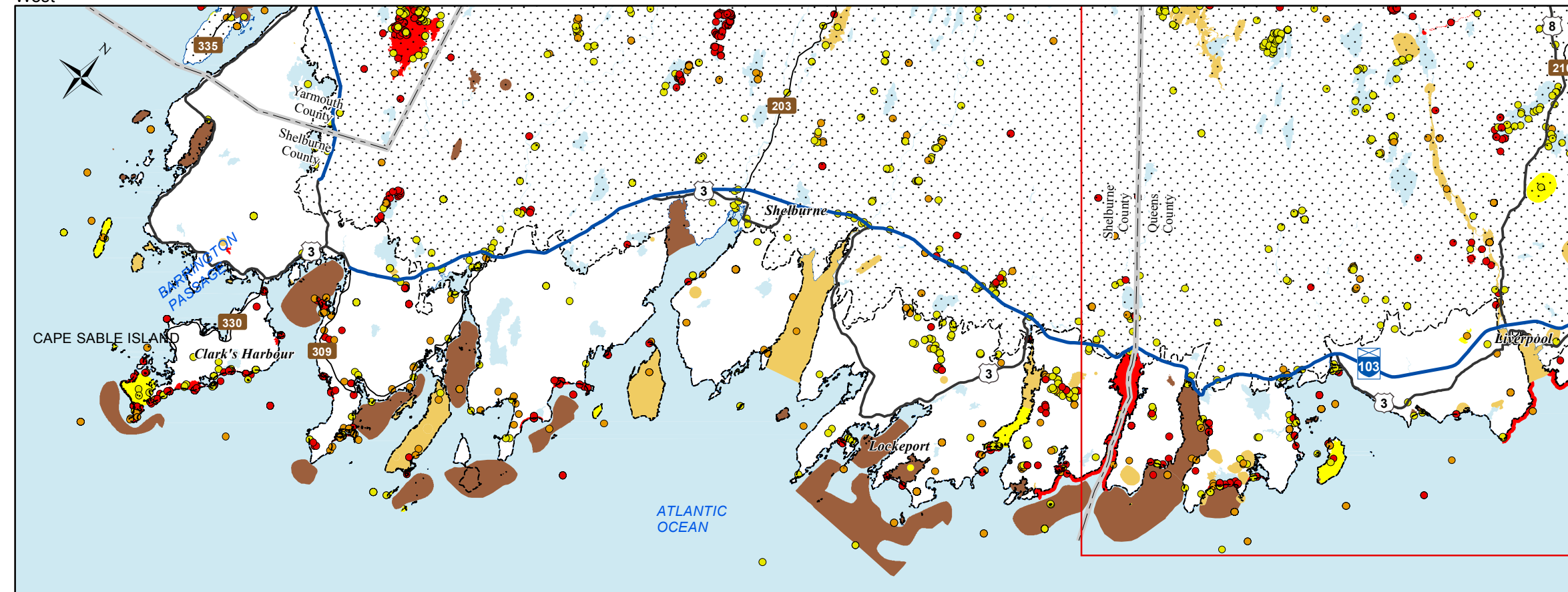
Additional information derived from Nova Scotia Department of Natural Resources, Geographic Information Systems (GIS) databases.

### Disclaimer

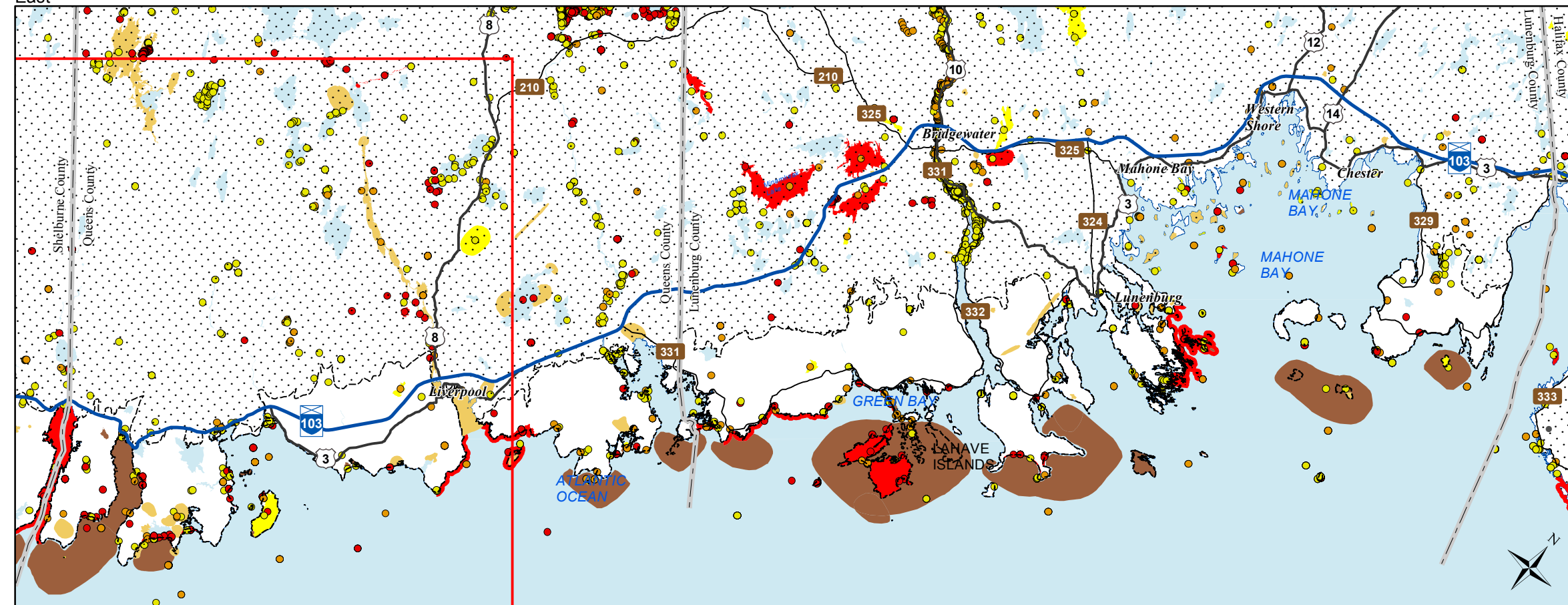
The information on this map may have come from a variety of government and non-government sources and is subject to change without notice. The Nova Scotia Department of Natural Resources accepts no liability for any errors, deficiencies, or faults on this map.



West



East



Date: 6/26/2015

## Ecological Landscape Analysis Map 6 Special Occurrences - Species

South Shore - Ecodistrict 830

### Legend

- Ecodistrict Boundary
- Outside Ecodistrict
- Other Occurrences (Point of Interest)
- At Risk
- May Be At Risk
- Sensitive
- Species at risk
- Species of conservation concern
- Migratory bird
- Other significant habitat
- Water

2 1 0 2 4 6 8 10 12 14  
Km

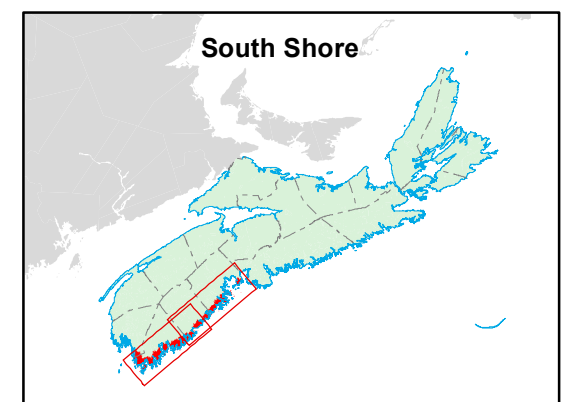
### Map Notes

Base data derived from the Nova Scotia Topographic Database (NSTDB). Copyright Province of Nova Scotia. All rights reserved. Service Nova Scotia & Municipal Relations, Nova Scotia Geomatics Centre, 160 Willow St., Amherst, Nova Scotia. Species status and locations data from Atlantic Canada Conservation Data Centre.

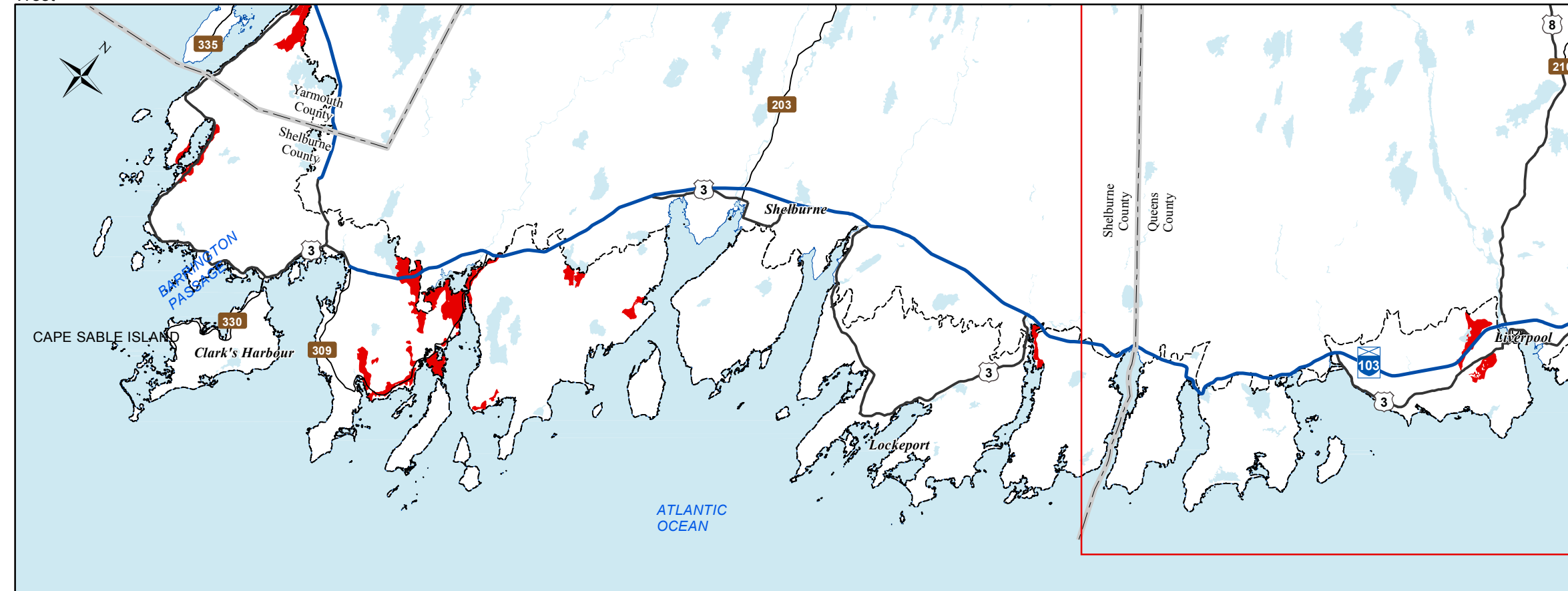
Additional information derived from Nova Scotia Department of Natural Resources, Geographic Information Systems (GIS) databases.

### Disclaimer

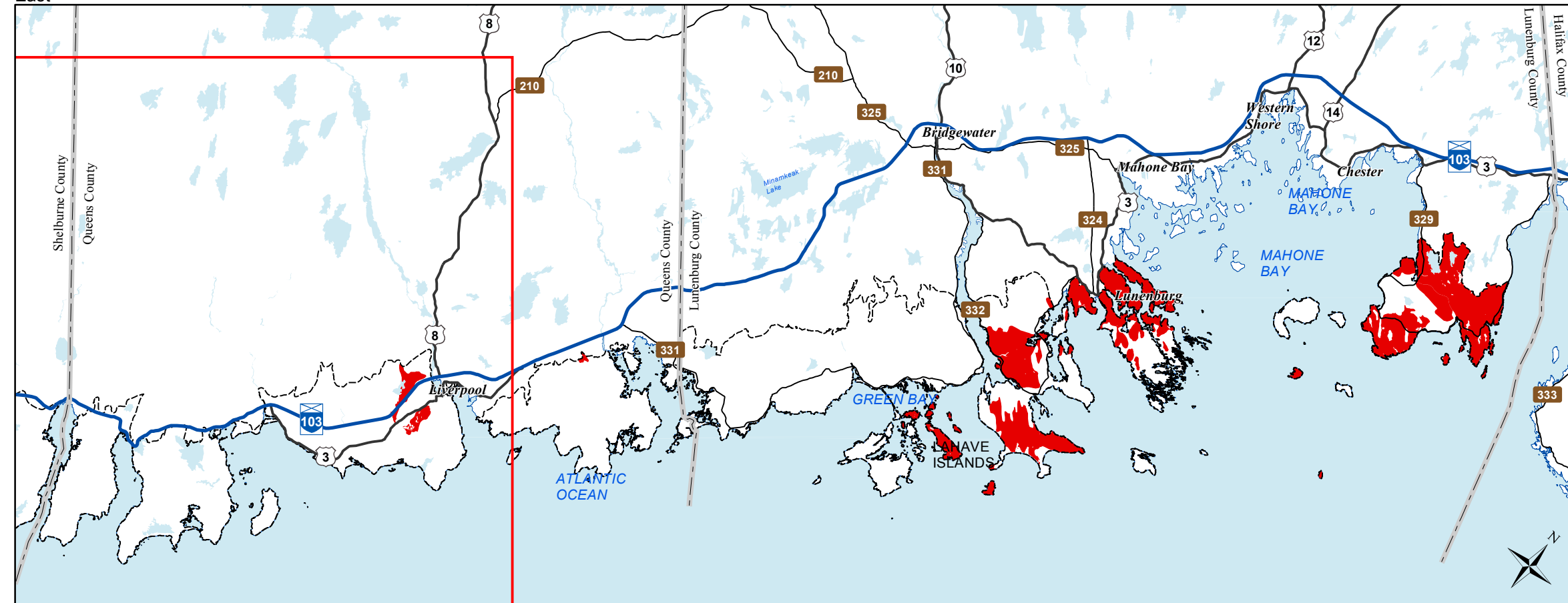
The information on this map may have come from a variety of government and non-government sources and is subject to change without notice. The Nova Scotia Department of Natural Resources accepts no liability for any errors, deficiencies, or faults on this map.



West



East



Date: 6/26/2015

# Ecological Landscape Analysis

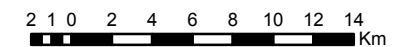
## Map 7

### Rare Ecosystems

South Shore - Ecodistrict 830

#### Legend

- Ecodistrict Boundary
- Rare Ecosystems
- Water



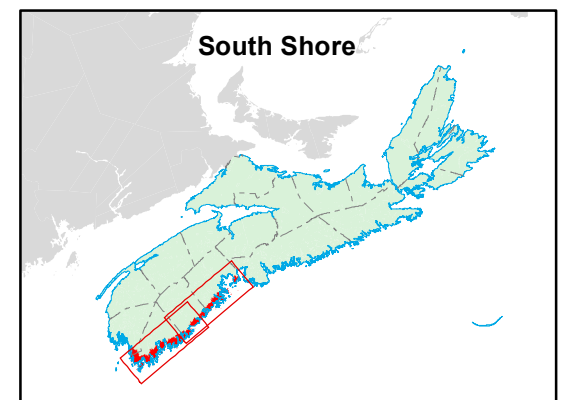
#### Map Notes

Base data derived from the Nova Scotia Topographic Database (NSTDB). Copyright Province of Nova Scotia. All rights reserved. Service Nova Scotia & Municipal Relations, Nova Scotia Geomatics Centre, 160 Willow St., Amherst, Nova Scotia. Species status and locations data from Atlantic Canada Conservation Data Centre.

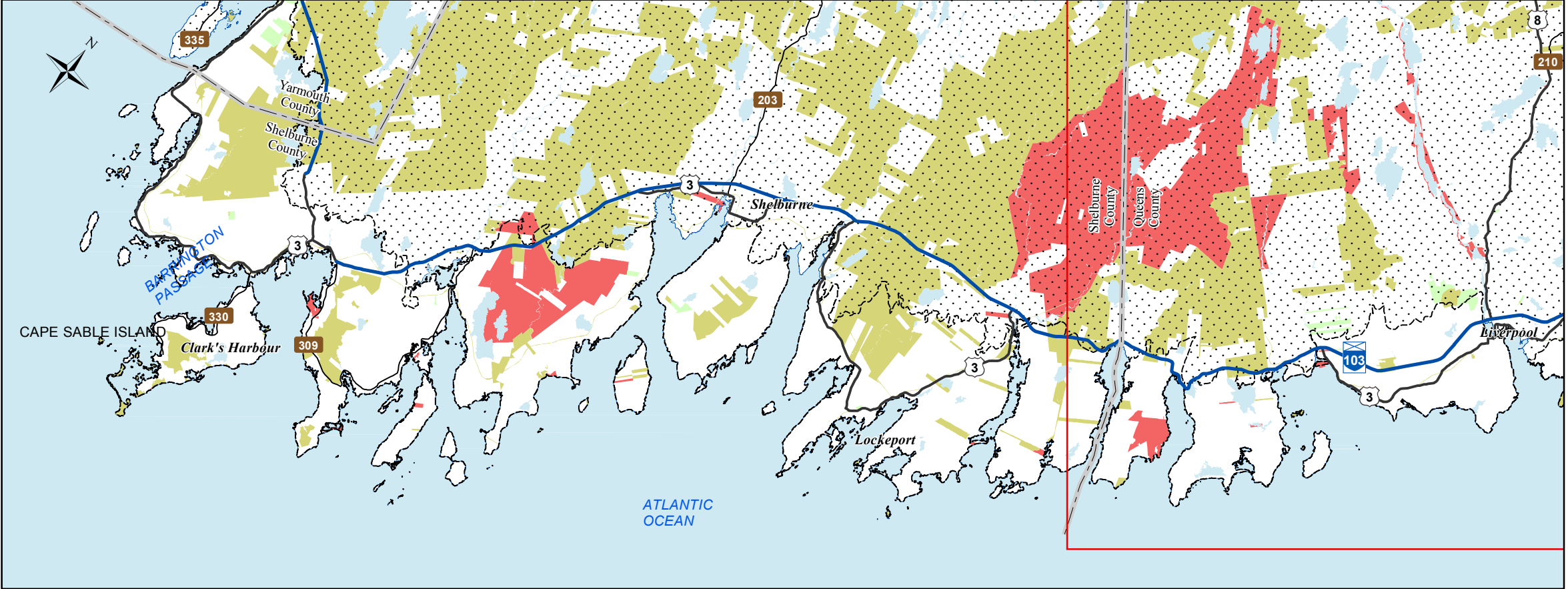
Additional information derived from Nova Scotia Department of Natural Resources, Geographic Information Systems (GIS) databases.

#### Disclaimer

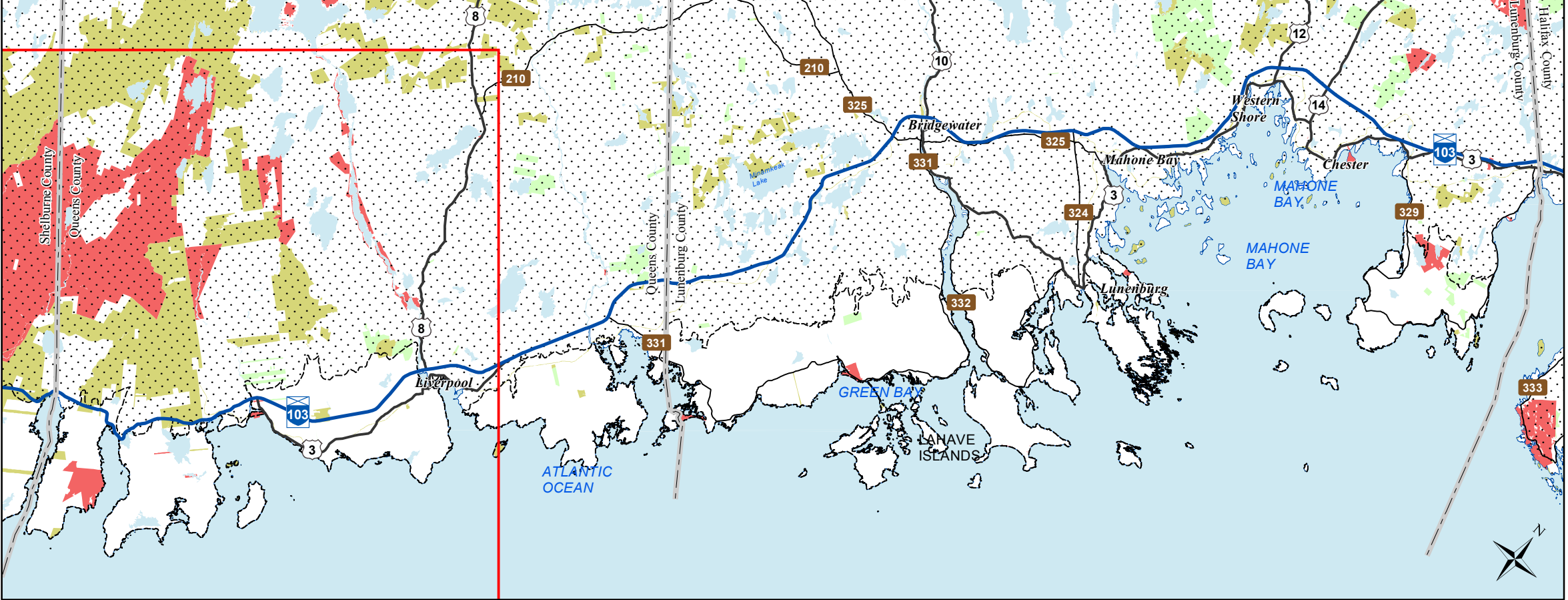
The information on this map may have come from a variety of government and non-government sources and is subject to change without notice. The Nova Scotia Department of Natural Resources accepts no liability for any errors, deficiencies, or faults on this map.



West



East



# Ecological Landscape Analysis

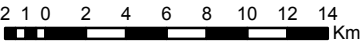
## Map 8

### IRM Classes

South Shore - Ecodistrict 830

#### Legend

- Ecodistrict Boundary
- C1 - General Resource Use
- C2 - Multiple and Adaptive Resource Use
- C3 - Protected and Limited Use
- Water



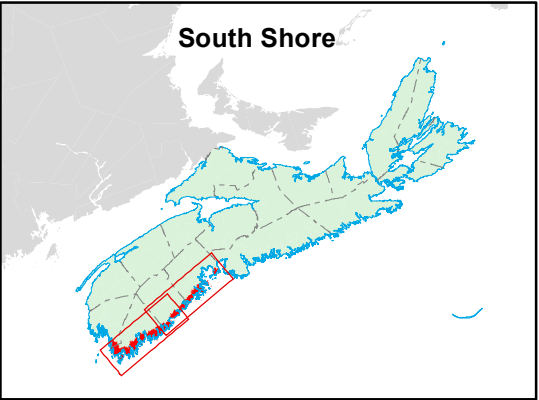
#### Map Notes

Base data derived from the Nova Scotia Topographic Database (NSTDB). Copyright Province of Nova Scotia. All rights reserved. Service Nova Scotia & Municipal Relations, Nova Scotia Geomatics Centre, 160 Willow St., Amherst, Nova Scotia. Species status and locations data from Atlantic Canada Conservation Data Centre.

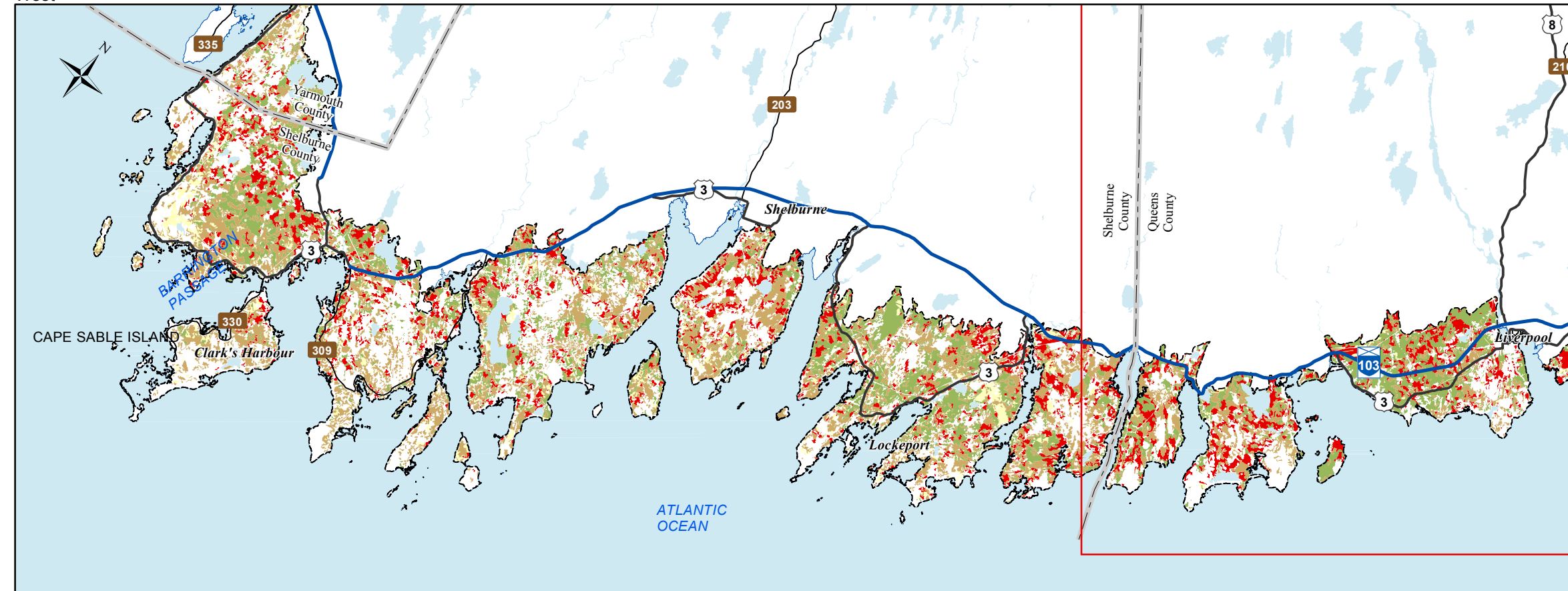
Additional information derived from Nova Scotia Department of Natural Resources, Geographic Information Systems (GIS) databases.

#### Disclaimer

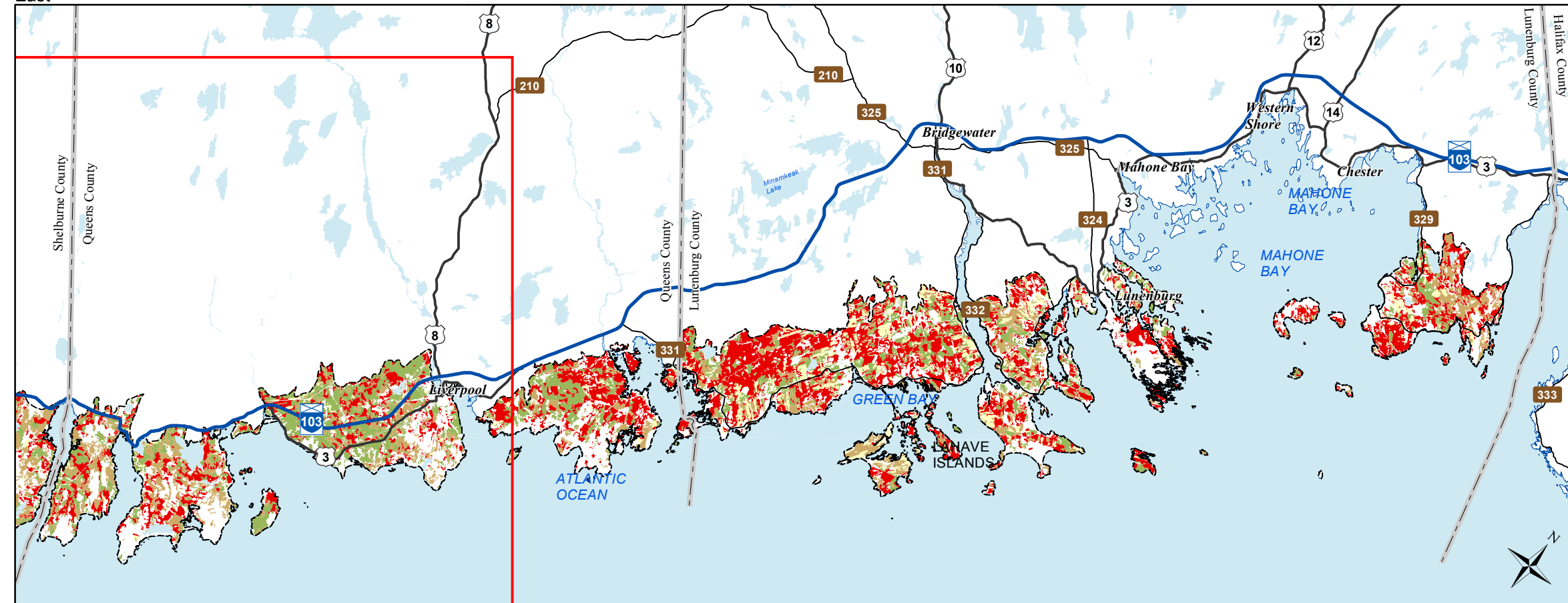
The information on this map may have come from a variety of government and non-government sources and is subject to change without notice. The Nova Scotia Department of Natural Resources accepts no liability for any errors, deficiencies, or faults on this map.



West



East

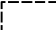








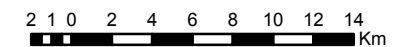
Date: 6/26/2015

## Ecological Landscape Analysis Map 9 Development Classes

South Shore - Ecodistrict 830

### Legend

-  Ecodistrict Boundary
-  Not forested
-  Establishment
-  Young Forest
-  Mature Timber
-  Multi-Aged / Old Forest
-  Water



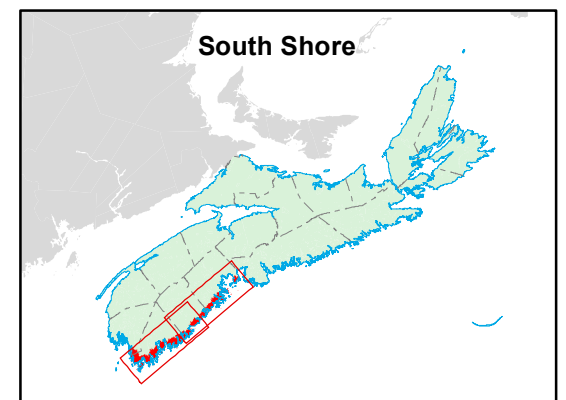
### Map Notes

Base data derived from the Nova Scotia Topographic Database (NSTDB). Copyright Province of Nova Scotia. All rights reserved. Service Nova Scotia & Municipal Relations, Nova Scotia Geomatics Centre, 160 Willow St., Amherst, Nova Scotia. Species status and locations data from Atlantic Canada Conservation Data Centre.

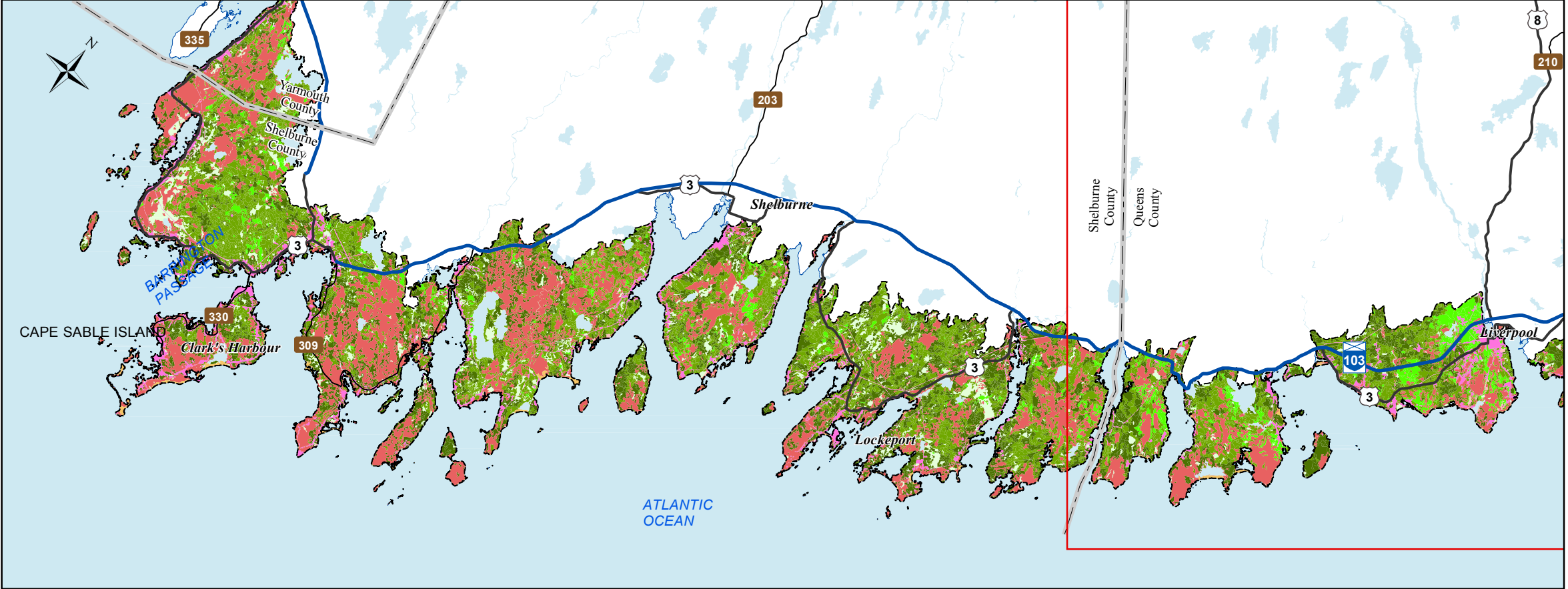
Additional information derived from Nova Scotia Department of Natural Resources, Geographic Information Systems (GIS) databases.

### Disclaimer

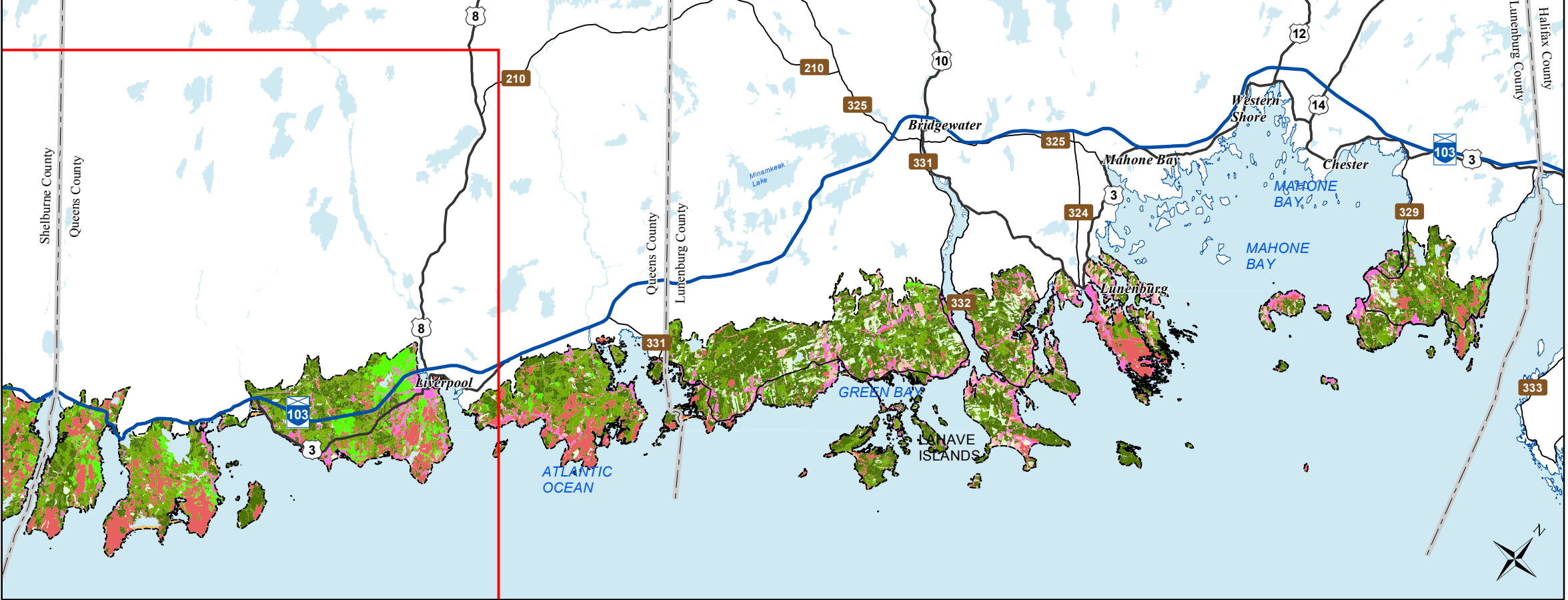
The information on this map may have come from a variety of government and non-government sources and is subject to change without notice. The Nova Scotia Department of Natural Resources accepts no liability for any errors, deficiencies, or faults on this map.



West



East

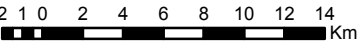


# Ecological Landscape Analysis Map 10 Seral Stages

South Shore - Ecodistrict 830

## Legend

- Ecodistrict Boundary
- Ecological Land Cover**
  - Agriculture and Developed Vegetation
  - Shrublands and Herbaceous Vegetation
  - Sparse Vegetation and Naturally Unvegetated
  - Urban/Industrial Vegetation and Unvegetated
- Seral Stage**
  - Unclassified (e.g. recent cut)
  - Early
  - Mid
  - Late
  - Water



## Map Notes

Base data derived from the Nova Scotia Topographic Database (NSTDB). Copyright Province of Nova Scotia. All rights reserved. Service Nova Scotia & Municipal Relations, Nova Scotia Geomatics Centre, 160 Willow St., Amherst, Nova Scotia. Species status and locations data from Atlantic Canada Conservation Data Centre.

Additional information derived from Nova Scotia Department of Natural Resources, Geographic Information Systems (GIS) databases.

## Disclaimer

The information on this map may have come from a variety of government and non-government sources and is subject to change without notice. The Nova Scotia Department of Natural Resources accepts no liability for any errors, deficiencies, or faults on this map.

