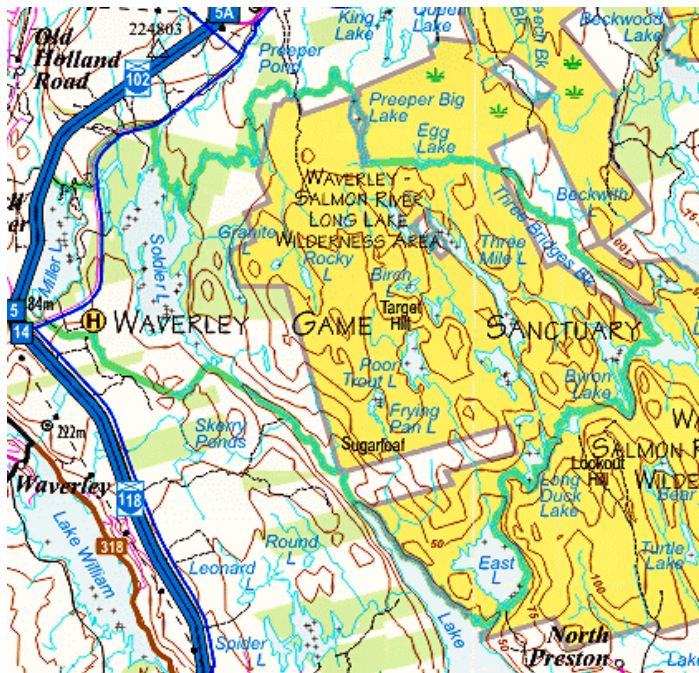


## Waverley Game Sanctuary



This area became a sanctuary because the Canadian General Council of the Boy Scouts Association of Ottawa requested an area of land for the use of the Boy Scouts. In 1926, some 3000 acres of land near Waverley were set aside. This area eventually was enlarged and became a sanctuary. Total area is 5228.7 hectares. This includes 1056 hectares of privately owned land, with the rest owned by the Province. The sanctuary is made up of 3478 hectares of woodland, 728.5 hectares of lakes and ponds, 360 hectares of wetlands, 583 hectares of barrens, 61.5 hectares of built-up land and 12.8 hectares of road and pipeline corridors. The sanctuary overlaps with the larger Waverley Salmon River Long Lake wilderness area, with 3224.3 hectares having both designations. Hunting and trapping are prohibited.