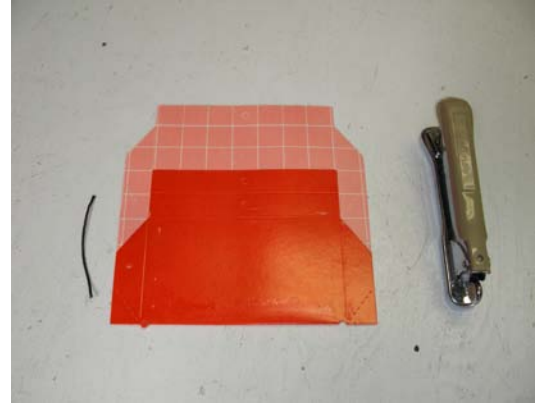


# Delta Pheromone Trap

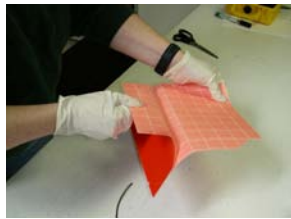
Used to Collect: Gypsy Moth (July - Sept)

Components for each trap: Equipment required:

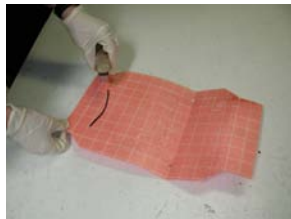
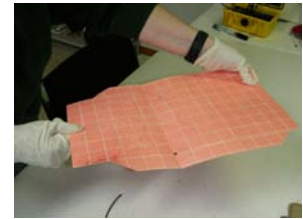
- 1 trap
  - 1 pheromone
  - hanging wire
- stapler
  - latex gloves
  - wire cutters



## Trap Assembly



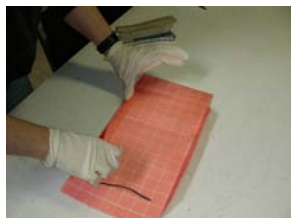
Pull trap apart. (Inside is very sticky.)



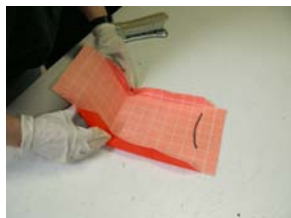
Remove the pheromone from it's envelope. The pheromones look like black plastic string. Lay the pheromone on the non-sticky section inside the trap.



Staple each end of the pheromone



Fold up both sides.



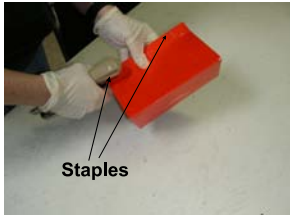
Fold up the end, tucking in the side corners as you fold.





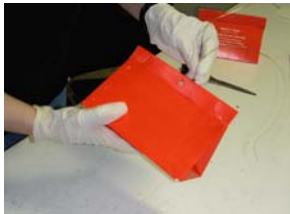
Fold up the other side to form a triangle.

Fold over the top and staple.



Two staples, one on each end, will hold the trap together.

The ends should form a funnel for the moths to enter the trap.



Cut an 45 - 60cm piece of rabbit wire. Thread through the hole at the top of the trap and twist a couple of times to secure.



**Completed Trap**