

# State of the Forest

## Update 2017





This document is an addition to the 2016 State of the Forest report. The figures presented here are updates and add-ons to the ones presented in the 2016 report. Where available, the most recent data has been added to a selection of the original figures. In addition to the updated figures, several new figures are included in section 8.4.

The description of the data used and the context for the figures presented here were provided in the 2016 State of the Forest document. Readers are encouraged to refer back to the original report for a more complete understanding of the figures contained in this 2017 update.

The 2016 State of the Forest document can be accessed here:

[https://novascotia.ca/natr/forestry/reports/State\\_of\\_the\\_Forest\\_2016.pdf](https://novascotia.ca/natr/forestry/reports/State_of_the_Forest_2016.pdf)

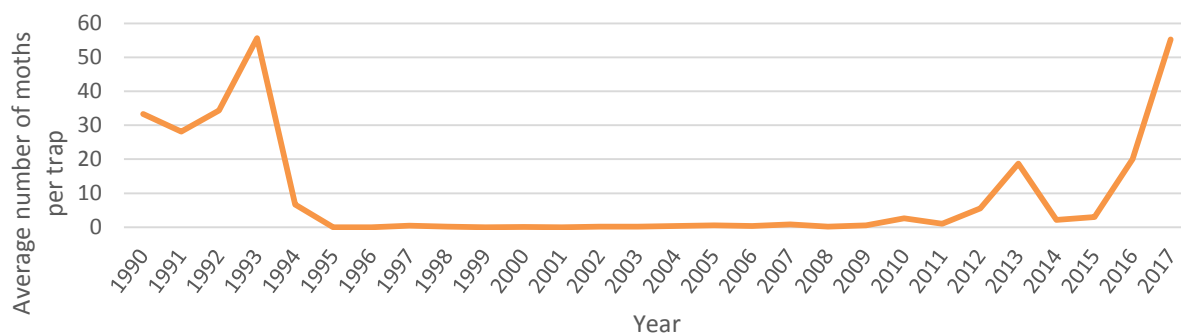


Figure 3.2.1. Average trap catch for spruce budworm pheromone traps deployed across the province, 1990–2017.

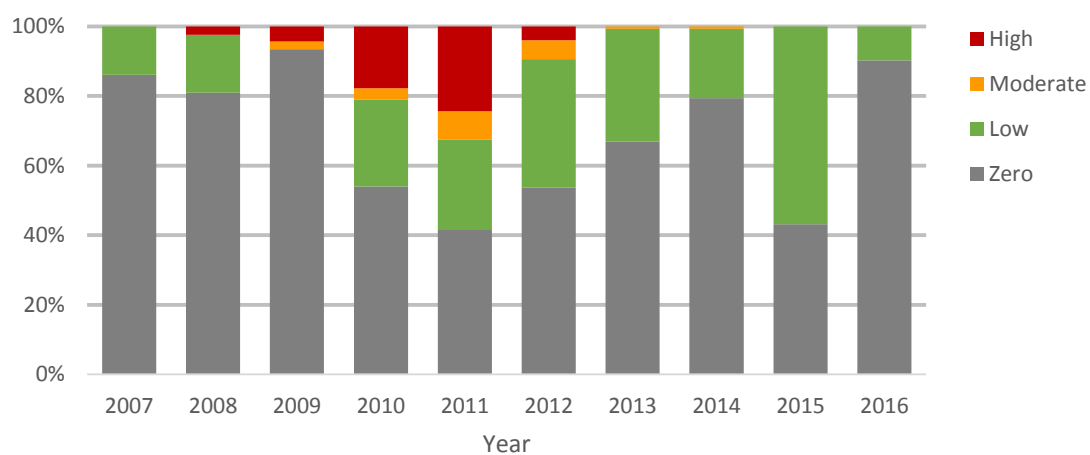


Figure 3.2.2. Egg niches for balsam fir sawfly in the Eastern region (%) 2007–2016.

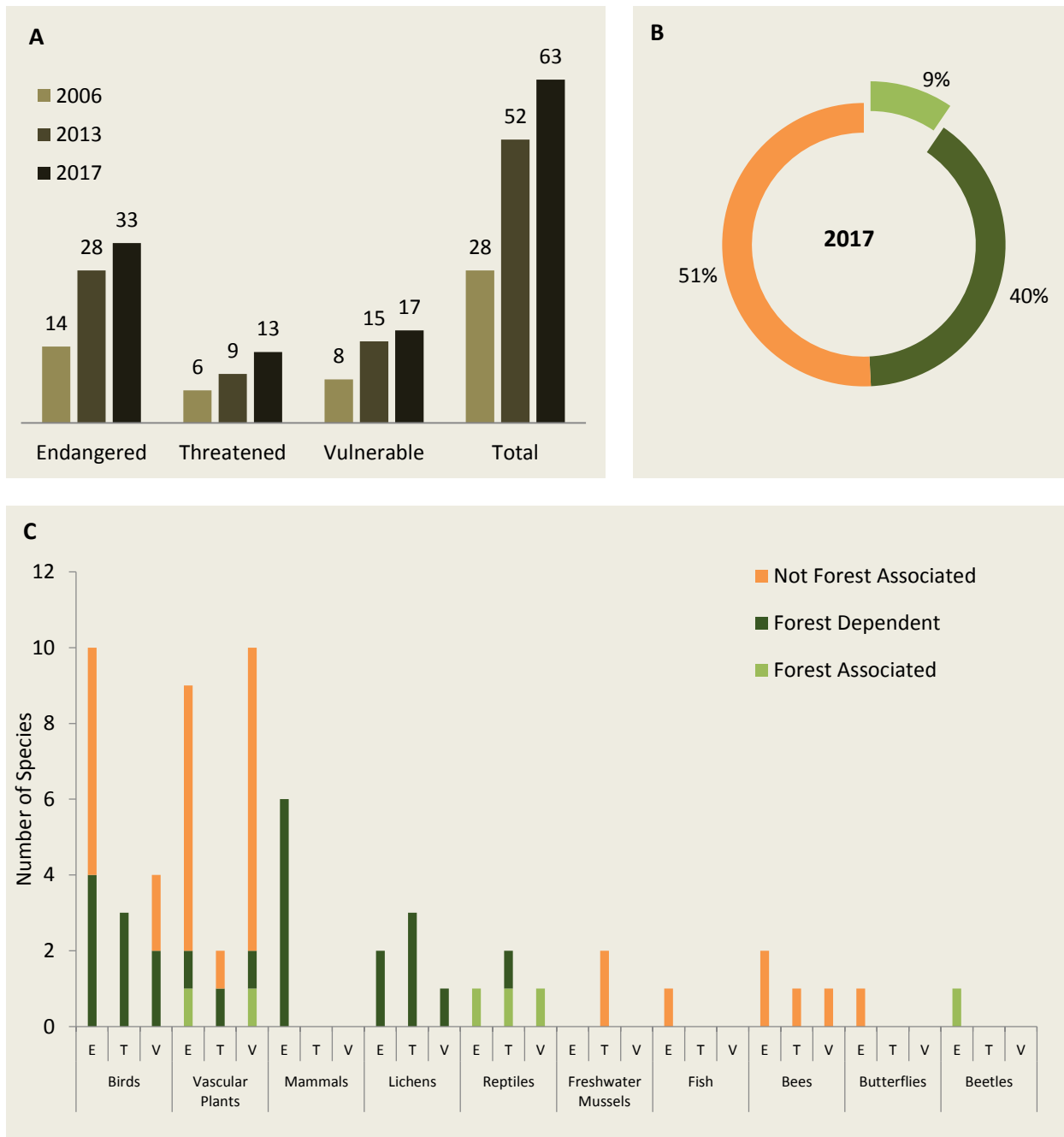


Figure 5.1.1. A: Count by risk status of provincial species at risk, 2006 vs. 2017. B: Breakdown by forest dependency categories, 2017 (%). C: Species at risk by life form and forest dependency categories, 2017 (Endangered E; Threatened T; Vulnerable V).

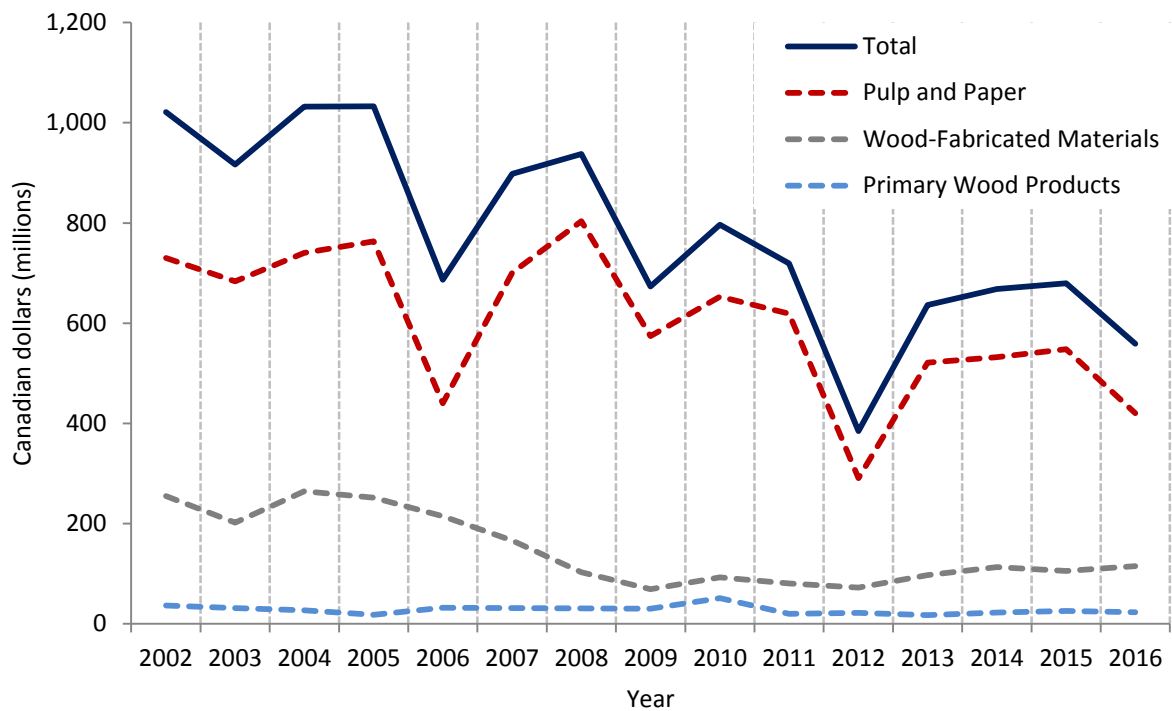


Figure 7.1.1. Export revenue in Canadian dollars (millions) from 3 major forest industry sectors, 2002–2016.

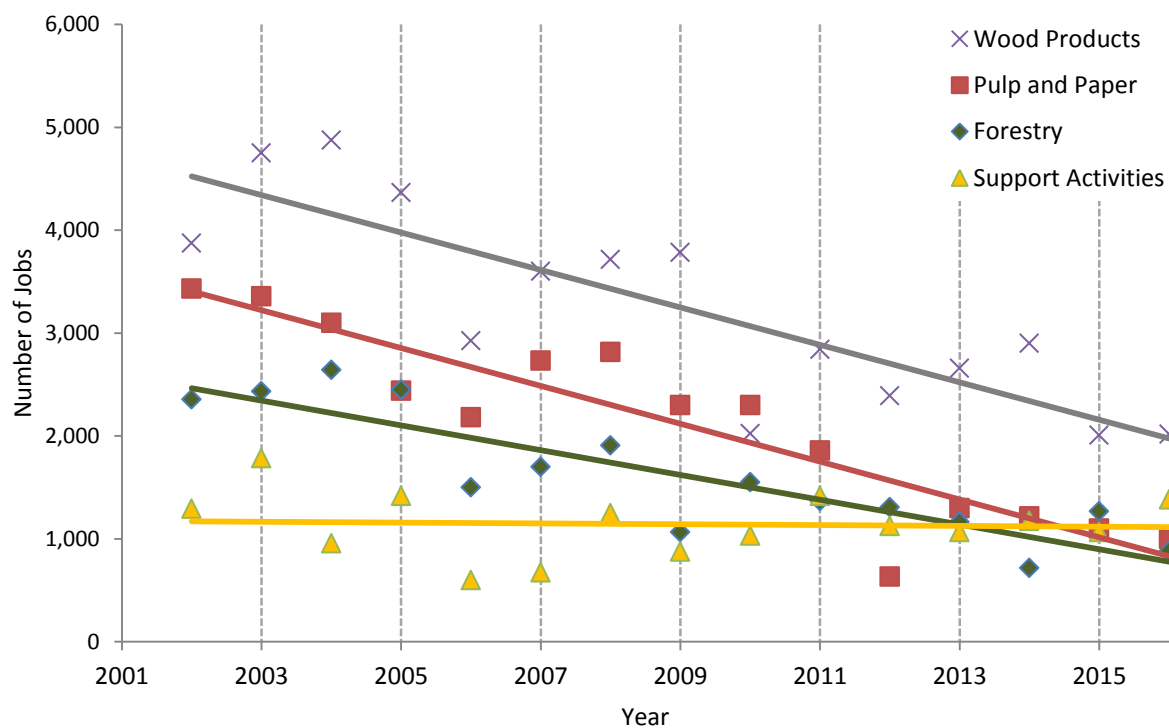


Figure 7.1.2. Direct jobs in the forest sector, 2002–2016.

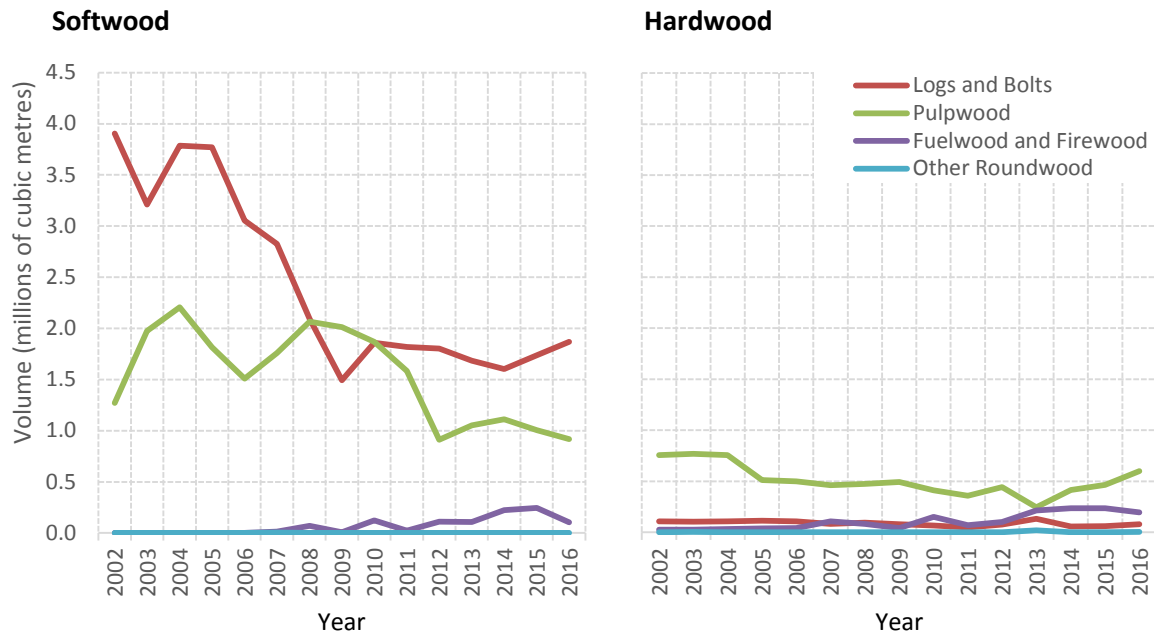


Figure 7.2.1: Softwood (swd) and hardwood (hwd) primary forest products acquired volume, 2002–2016.

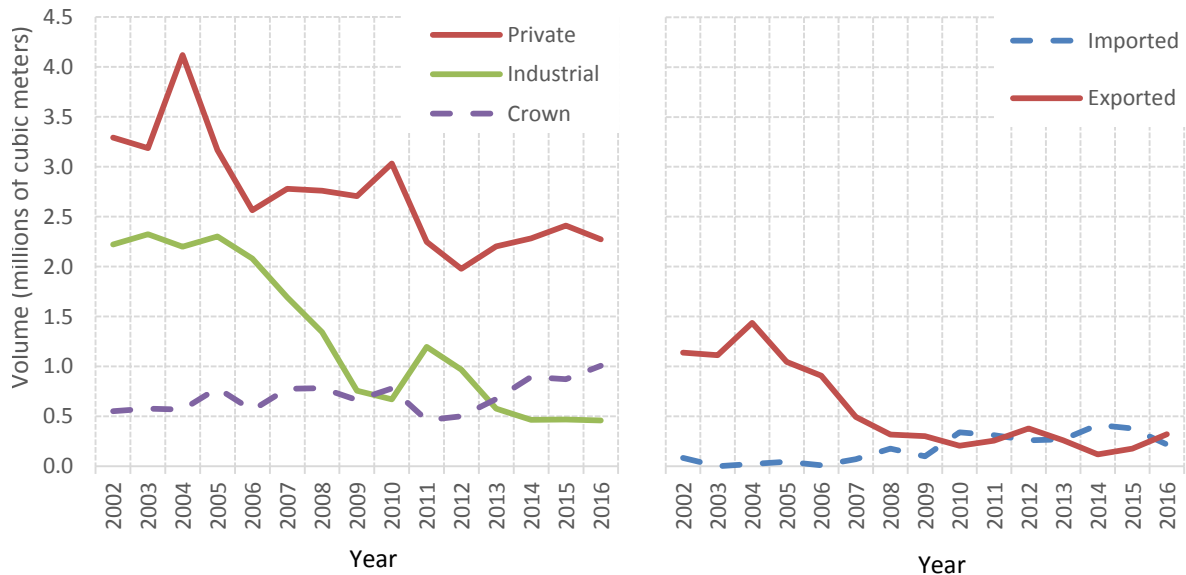


Figure 7.2.2. Left: Volumes harvested, by land ownership category, 2002–2016. Right: Exported and imported volumes, 2002–2016.

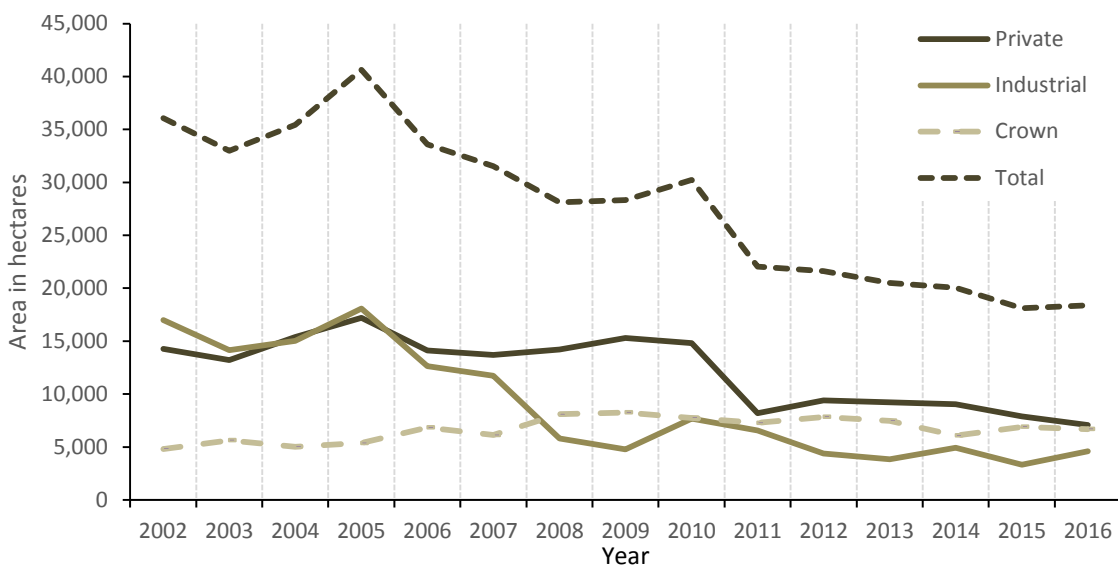


Figure 7.3.1. Areas of silviculture performed, by land ownership category, 2002 to 2016.

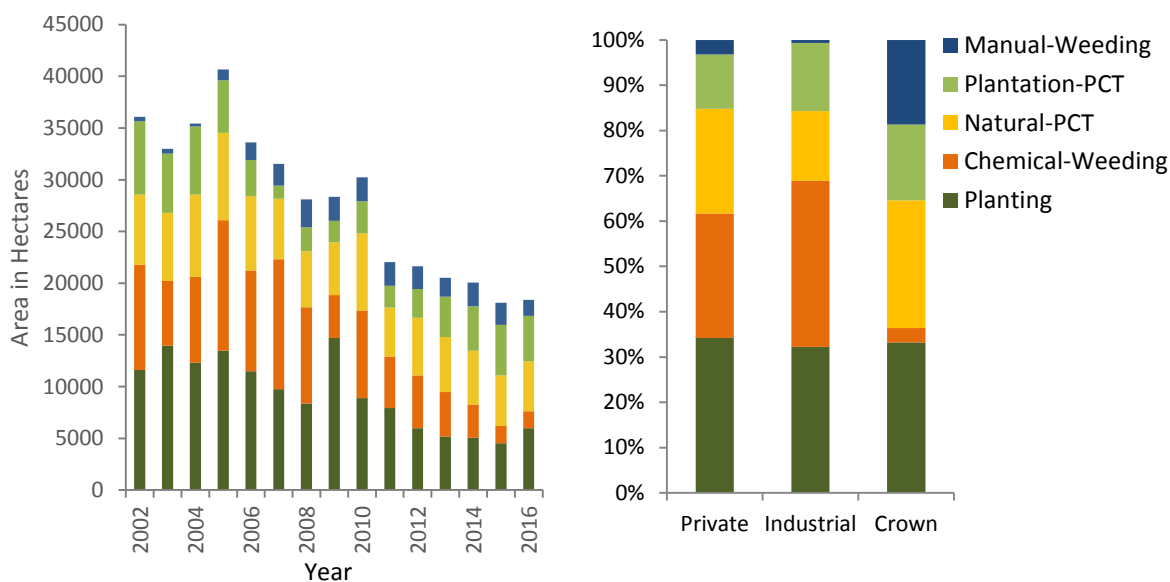


Figure 7.3.2. Left: Total area of silviculture treatments. Right: Breakdown of treatment area by ownership category (%), 2002–2016 (PCT = pre-commercial thinning).

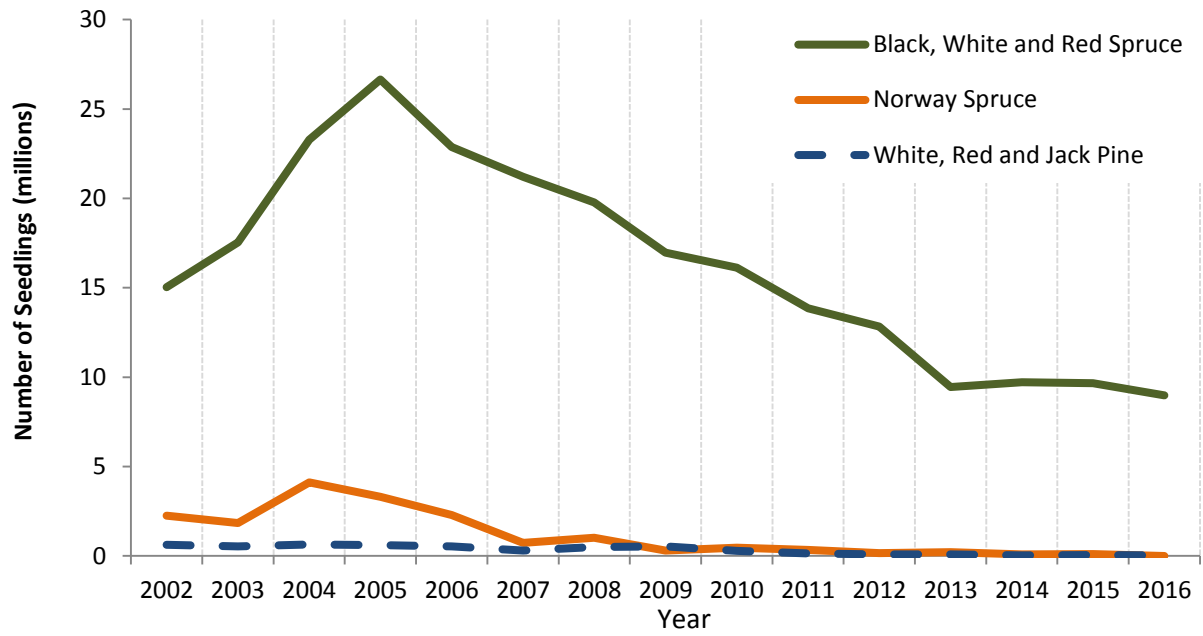


Figure 7.4.1. Softwood seedlings planted in Nova Scotia, by species group, 2002–2016.



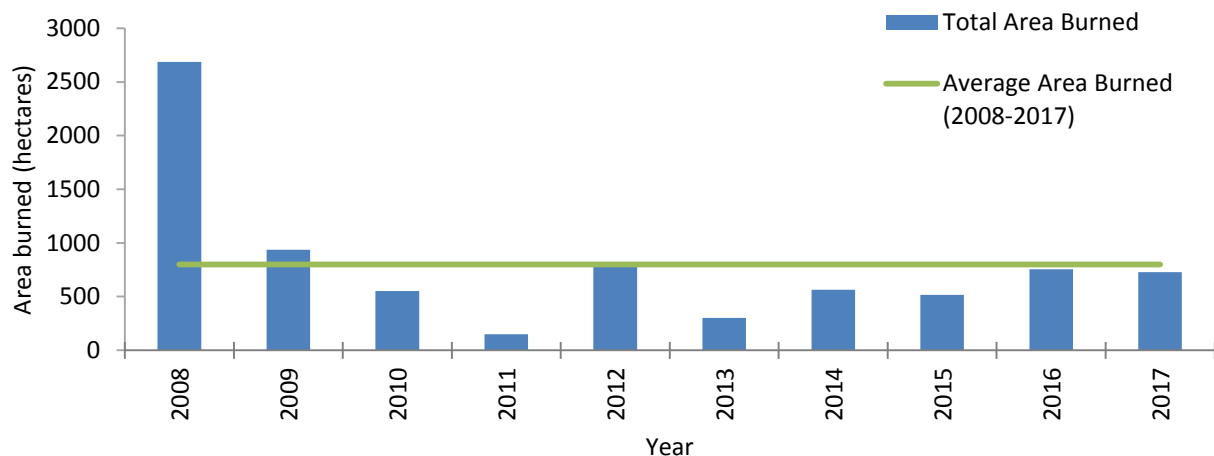


Figure 8.1.1. Total wildfire area burned per year between 2008 and 2017, and 10-year average of area burned between 2008 and 2017.

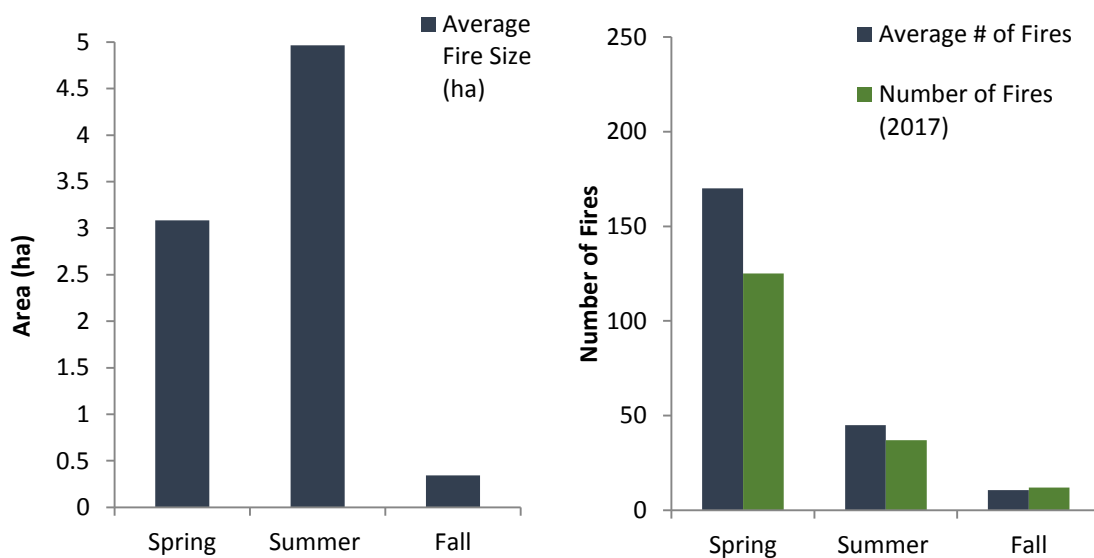


Figure 8.1.2. Left: Average fire size per season. Right: Average number of fires per season and actual number of fires in 2017. Averages based on 2008 to 2017 data.

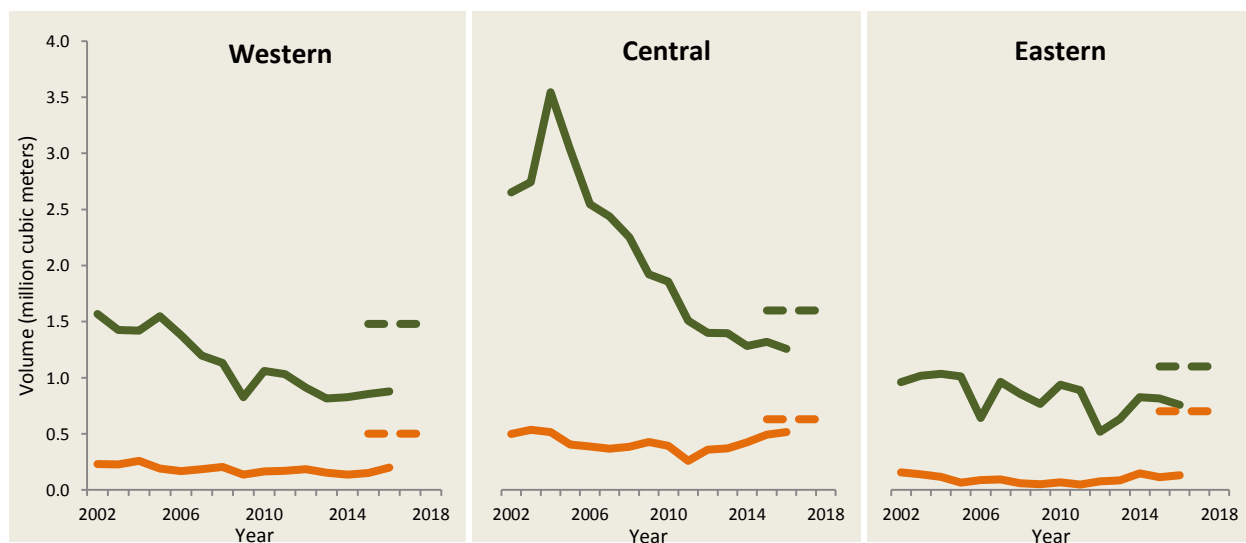
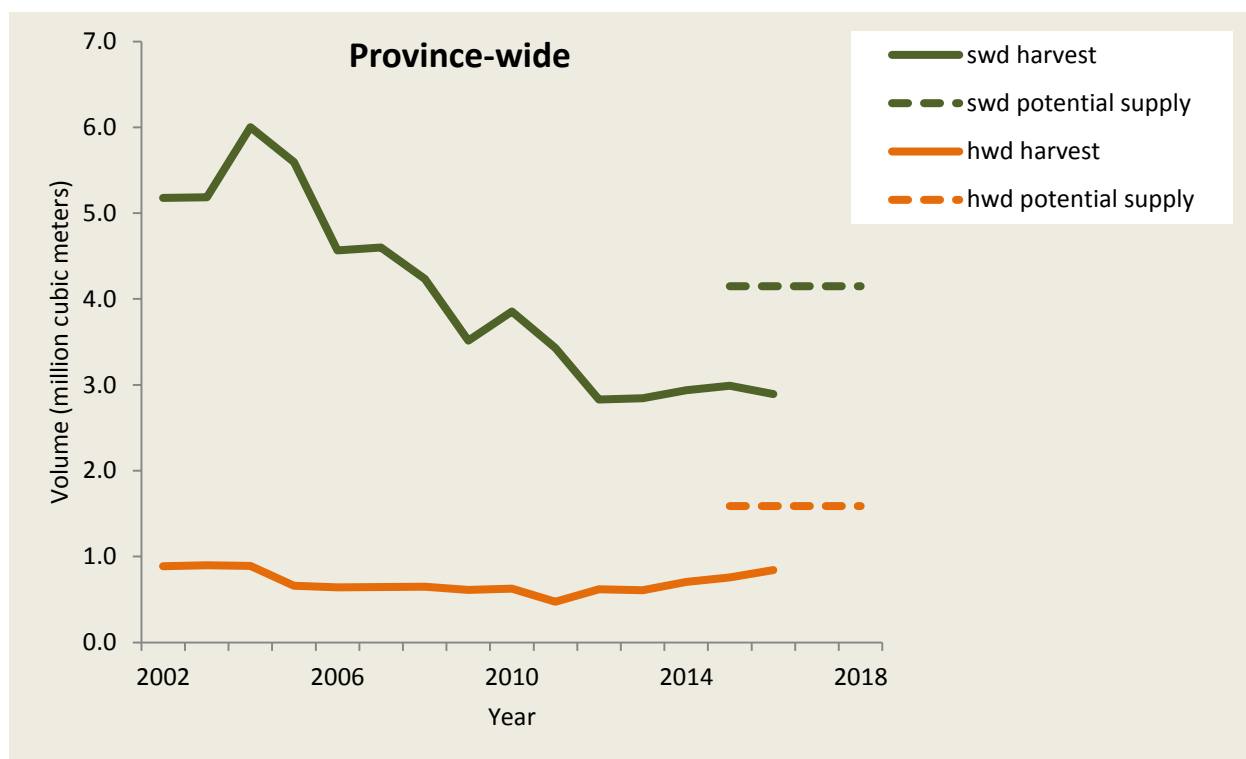
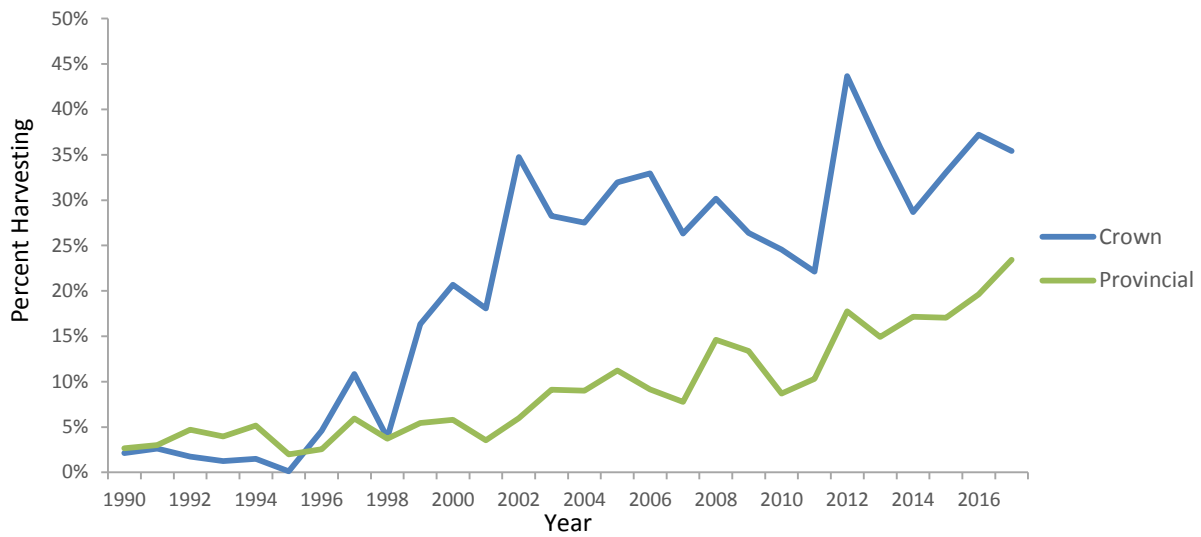
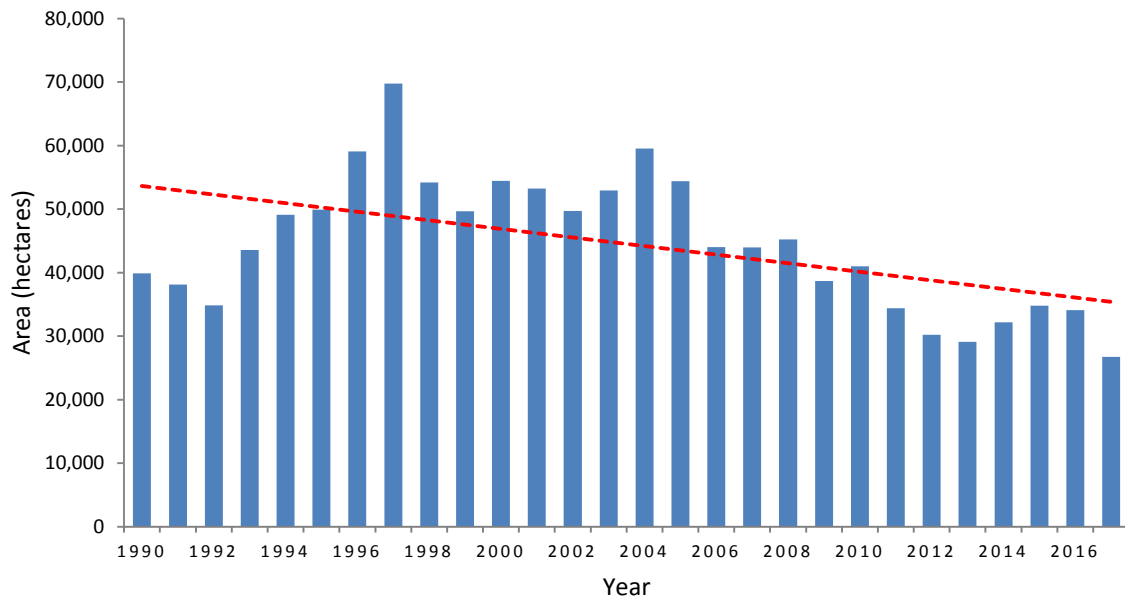


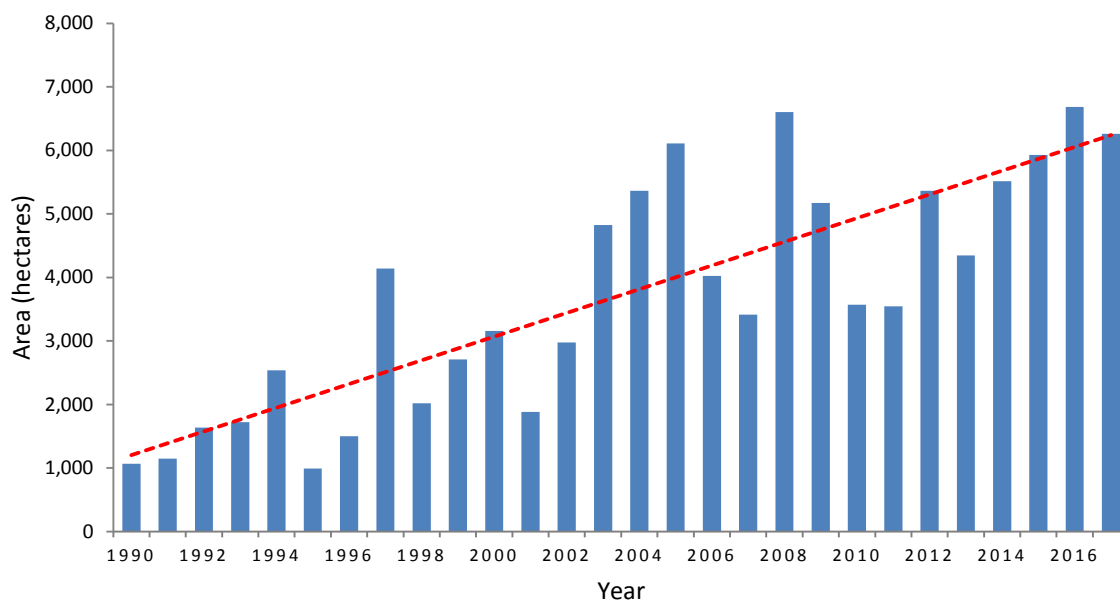
Figure 8.3.1. Province-wide and regional softwood (swd) and hardwood (hwd) actual harvest volume statistics, 2002–2016; dashed lines represent potential supply estimate for the 2016–2018 period.



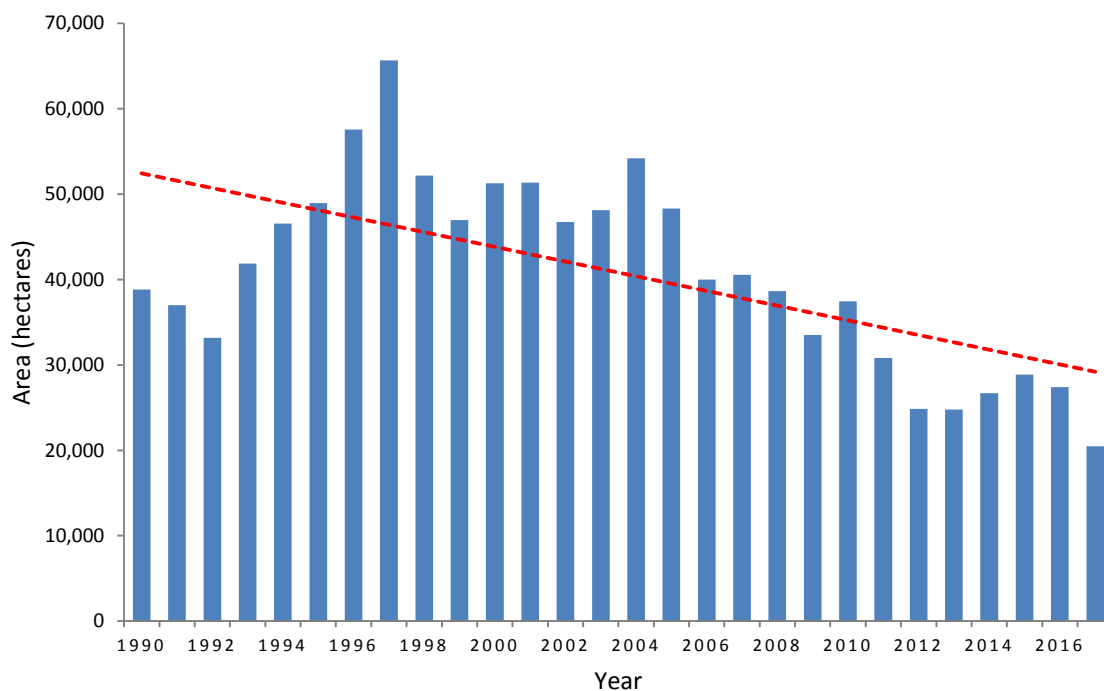
*Figure 8.4.1. Provincial summary of the percentage of non-clearcut harvesting on Crown lands and across all land tenures from 1990-2017.*



**New:** *Figure 8.4.2 Provincial summary of the area harvested by all methods across all land tenures from 1990-2017. Dashed line represents linear trend.*



**New:** Figure 8.4.3 Provincial summary of the area harvested using non-clearcut methods across all land tenures from 1990-2017. Dashed line represents linear trend.



**New:** Figure 8.4.4 Provincial summary of the area harvested using clearcut methods across all land tenures from 1990-2017. Dashed line represents linear trend.

*Data Figure 1.2: Provincial area by ownership.*

Ownership (%)		Area (ha)
59.4%	Private*	3 279 872
33.6%	Crown	1 856 018
4.2%	Inland Water	234 432
2.8%	Federal	154 372
<b>Total</b>		<b>5 524 694</b>

\*Includes 468 637 ha of Industrial Private.

Note that the data for Figure 1.2 is included in this update to correct an error in the footnote from the original document.