

AR 2012 - 135

DNRMPT SEP18'12 10:10

PROSPECTOR'S ASSESSMENT REPORT  
Naugler's Settlement, Halifax Co., N.S.  
NTS 11D / 16C  
August, 2012

BY : Perry T. Bezanson  
880 Box 232 New Chester Rd,  
Moser River, Nova Scotia  
B0J 2K0

**DUPLICATE AVAILABLE**

## **TABLE of CONTENTS**

	<b>PAGE NUMBER</b>
<b><u>SUMMARY</u></b>	
<b>INTRO</b>	<b>3</b>
<b>LOCATION and ACCESS</b>	<b>3</b>
<b>LAND OWNERSHIP</b>	<b>3</b>
<b>LICENCE TABULATION</b>	<b>3</b>
<b>PHYSIOGRAPHY/SETTING</b>	<b>4</b>
<b><u>GEOLOGY</u></b>	
<b>REGIONAL GEOLOGY</b>	<b>4</b>
<b>LOCAL GEOLOGY</b>	<b>5</b>
<b>HISTORY</b>	<b>5</b>
<b>WORK PERFORMED</b>	<b>6</b>
<b>RESULTS</b>	<b>6</b>
<b>CONCLUSIONS</b>	<b>6</b>
<b>AUTHOR'S CERTIFICATE</b>	<b>6</b>
<b>BIBLIOGRAPHY</b>	<b>7</b>
<b><u>MAPS:</u></b>	
<b>FIGURE 1 PROVINCIAL MAP</b>	<b>8</b>
<b>FIGURE 2 LOCATION MAP</b>	<b>9</b>
<b>FIGURE 3 CLAIMS MAP 11D/16C</b>	<b>10</b>
<b>FIGURE 4 SAMPLE LOCATION MAP</b>	<b>11</b>

# PROSPECTOR'S ASSESSMENT REPORT

Naugler's Settlement, Halifax Co., N.S.

NTS 11D / 16C

August, 2012

BY : Perry T. Bezanson  
880 Box 232 New Chester Rd,  
Moser River, NS  
B0J 2K0

SUMMARY: Perry T. Bezanson conducted exploration on **EL License #09882** Naugler's Settlement during the year field season. The goal of exploration over this district is to locate and define, targets which could be gold due to it's location on the Salmon River anticline.

Work in 2012 consisted of collecting rock samples from this location, searching for outcrop and float along roads and streams. After completing boot prospecting of the two claim blocks on track 97, during a very dry summer, streams and small brooks were very easily traversed. Numerous quartz float was found in the bend of the brook on claim H. Two rock samples were collected from claim H and sent to TUNS for assay. The results of the assay showed <0.005ppb Au.

INTRODUCTION: Perry T. Bezanson, in the 2012 field season, conducted basic prospecting and collected rock samples from the Naugler's Settlement location. The goal of exploration in this area is determine the occurrence of gold at this location.

LOCATION AND ACCESS: The Naugler's Settlement claim area is located in Halifax County, Nova Scotia approximately 20 km east of Sheet Harbour on the #7 Highway, turning north on the Naugler's Settlement Road. At the end of the paved road, a four wheel drive truck, or all terrain vehicle, is required to gain access to the site.

LAND OWNERSHIP: The claim group is privately owned but has given permission for prospecting and exploration to be carried out on their property.

LICENCE TABULATION : EL # 09882

# of claims: 2

Renewal date : 26 August 2012

NTS  
11D/16C

TRACT  
97

CLAIMS  
AH

**PHYSIOGRAPHY and SETTING:** License 09882 is covered entirely by second growth forest with selective logging and clear cutting taking place . The land is covered by, thick, immature or stunted spruce for the most part. Good stands do exist and some are currently being exploited.

The property is characterized by flat to gently rolling land surface. There are many large swamps in the district which are drained by sluggish streams.

**REGIONAL GEOLOGY :**

The Naugler's Settlement claims are located in between Harrigan Cove to the west, Ecum Secum to the east, and approximately 1km to the north of Moser River.

(60 degree azimuth) anticlinal structure on the Salmon River Anticline which is set in the Meguma Group, a set of metasedimentary Cambrian to late Ordovician aged rocks. They are intruded by late Devonian granitoid intrusions of predominately peraluminous composition and Silurian to Devonian metasedimentary and volcanic rocks scattered along the north margin.

Regionally, the Meguma Group is separated into two dominant formations. The Goldenville Formation consists of interbedded regionally metamorphosed psammities ( also referred to locally as greywacke, quartzite or arenite). This is comfortably overlain by the Halifax Formation, dominated by carbonaceous pelites and semi pelites (also referred to locally as slate or argillite) which can contain abundant sulphides. A possibly regionally third formation consisting of Mn-enriched sediments which occupy the Goldenville to Halifax transition zone (GHT) has been recognized by O'Brien (1985) within the Mahone Bay area and term the Green Bay Formation. Exposure of the GHT is poor over its strike length.

The GHT is marked by a banded cotecule of highly deformed calcareous rich , psammatic strata that can contain a high concentration of sulfides and spessartine garnets (Sangster, 1990 ). The Meguma Group is extensively intruded by peraluminous granitoids of ca. 370 Ma age. These rocks have been indentified as having a special relationship to gold within the Meguma-hosted gold deposits (Smith and Kontak , 1989). The Meguma terrane is bordered on the north by the Cobequid-Chebaducto fault, a major regional shear zone trending east-west. Northwest trending traverse faults occur as high angle brittle-ductile faults, which vary in length from tens of metres to tens of kilometres throughout the Meguma Group. They are present at many Meguma Group gold deposits and at Naugler's Settlement as well. At a local scale, faults are manifested as shear and breccia zones associated with minor displacements, and zones of tension gashes and kink banding.

Two major regional metamorphic events have been described for the Meguma terrane (Smith and Kontak , 1989). These are a greenschist metamorphic event which was over printed by a thermal metamorphic event associated with regional granitoid plutonism. Two stages of alteration, one local and one very detailed, have also been recognized (Smith and Kontak , 1989). Local alteration occurs on a scale of hundreds to thousands of metres and is distinguished by zones of intense silicification, sericitization, carbonization

and sulphide development, and may occur over wide areas. The more detailed alteration occurs as sulphide infilling in fractures, small segregated zones bleached from quartz replacement, or coarse arsenopyrite grains with pressure shadows of carbonate and chlorite. Very local color mottling in the psammities may occur with no sulphides present. These detailed alteration effects often appear to over print the less detailed ones.

#### LOCAL GEOLOGY:

Locally, rocks of the Naugler's Settlement area are dominated by relatively thick (often greater than 10.0 meters) successions of Goldenville Formation, "Bouma sequence", psammitic turbidites of the Meguma Group, sporadically broken by relatively thin (rarely greater than 2.0 meters) pelitic to semi-pelitic strata of the Halifax Formation of the Meguma Group. These, relatively thin pelitic strata, host stratabound, bedding parallel vein packages, traditionally referred to in historical documents as, "whin", or, "whin rock". These strata traditionally formed the bedding parallel ore structures at the Moser River Gold District. These strata, successively juxtaposed one over the other, are in turn, folded into a relatively tight chevron style fold, as described by Horne (1997). This fold axis is oriented roughly northeast - southwest, with the fold axis oriented parallel with the bush road accessing the property, axis pointing northeast and plunges approximately 45 degrees in the same direction.

Quartz veins commonly display sulphide mineralization in the form of pyrite, arsenopyrite, and pyrrhotite, and less commonly, chalcopyrite and galena. Oxides such as sphalerite and wolframite may also be present, wolframite being far less common. Alteration mineral facies includes chlorite, carbonate (in the form of quartz-carbonate), phlogopyte, and sericite, and secondary iron sulphides such as pyrites and hematite. Gold may be found in veins as well, at variable ore tenor levels, up to approximately 50 grams per ton. Mineral habits may be massive to disseminated for the sulphides, chlorite, and quartz-carbonate and more commonly disseminated for the others. These veins display a variety of color, from milky white to clear and oily, and a variety of textures from microscopic bedding parallel crack seal textures to discordant bull quartz (Smith and Kontak, 1989). Although the bulk of historical production has come from the stratabound veins, all quartz veins in this area are known to carry gold.

#### HISTORY:

The Moser River Gold District has a long history of exploration. Local residents recall numerous test pits throughout this area dating back as early as the 1880/90's. Faribault's map of 1895 shows auriferous quartz vein prospected close to this area.

**WORK PERFORMED:**

**A. PROSPECTING:**

**WORK PERFORMED and METHODOLOGY:**

The goal of prospecting in 2012 year was to search for outcrop and float, collect rock samples, and to look for any evidence of mineralization along the Salmon River anticline. Boot prospecting was carried out along roads, brooks, and streams. Quartz float was found to be abundant along the road and two rock samples were collected from one brook. The two samples collected had sharp edges indicating that they were close to the source. These two samples were float located in a brook, and weighed approximately 5kg each. Both of these samples had a vuggy surface that contained quartz, oily slates, and rust stains. The 5kg rock samples were broken down with a rock hammer. The remaining 2kg rock samples were collected and sent to TUNS to be assayed for gold. Larger pieces of these samples were left on location and tied with orange flagging tape, with the intent of carrying out future assays of the remaining samples if needed.

*See Map 4 for sample location.*

**CONCLUSIONS AND RECOMMENDATIONS:**

Work at this stage is strictly preliminary leading to further work in the 2013 field season which will be more intensive and focusing on the quartz veins located in the brook. Assay results, for the two samples taken from the brook in this area, have been included with this report.

**AUTHOR'S CERTIFICATE :**

This report was prepared by Perry T. Bezanson. In 2004, Perry T. Bezanson became a registered prospector, Prospector Identification Number 1174. He is a member of the Nova Scotia Prospectors Association and has attended many of the field trips hosted by DNR Geologists. Before becoming a registered prospector, Perry spent many years as a heavy equipment operator, including machines such as backhoe, bulldozer, loader, and truck driver, in gravel pits and road building and stone work.

---

Perry T. Bezanson

**BIBLIOGRAPHY:**

**Faribault, E.R.,1902:  
Ecum Secum Gold District  
Map# 37**

**Horne, R. 1997:  
Flexural Slip Folding in the Meguma Group, southern Nova Scotia; in Abstract Volume;  
Geological Association of Canada - Mineralogical Association of Canada, Annual  
Meeting, May 1997, Ottawa.**

**O'Brien,B.H.,1985:  
Preliminary Report on the Geology of the Mahone Bay Area,  
Nova Scotia (abstract) Hi-Tec Geoconsultants Ltd, Nova Scotia  
Dept. of Mines and Minerals Branch Report of Activities , 1985  
Bates J.L. ed.**

**Sangster ,A.L. 1990:  
Metallogeny of Meguma Terrane ,Nova Scotia in Mineral Deposits  
Studies in Nova Scotia : Volume 1 , Sangster , A.L. , ed , Geol.Surv.Can. 1990 , p115-  
162 ( Geol.Surv.Can.Paper 90-008)**

**Smith,P.K.and Kontak, D.J. 1989:  
Geochemistry of Wall Rock and Vein Lithologies at the Forest Hill  
Gold Deposit, Meguma Terrane , Nova Scotia , Preliminary Results From a Study of the  
9+00 (metres) East Trench, Nova Scotia Dept. of Mines and Energy, in Mines and  
Minerals Branch  
Report of Activities,1989,PartA, MacDonald, D.R.&Mills, K.A.eds.**

13-Sep-12

Perry Bezanson  
Box 232  
New Chester Rd.  
NS B0J 2K0

minerals.engineering.dal.ca  
Tel: 902.494.3955  
Fax: 902.494.3506  
Email: mec@dai.ca

**Re: Results of analysis on submitted samples.**  
Au analysis using 30g fire assay, lead collection, AAS finish.

Sample	mg/kg
	Au
Nauglers #1	<0.005
Nauglers #2	<0.005

Certified Reference Samples:	mg/kg Au	Recommended Value
OXC72	0.207	0.205±0.003
OXC72	0.203	0.205±0.003

*Daniel Chevalier*  
Digitally signed by  
Daniel Chevalier  
Date: 2012.09.13  
15:23:13 -03'00'

Daniel Chevalier  
Manager, Minerals Engineering Centre

## **Fire Assay Procedure – Gold**

**Sample Decomposition: Fire Assay Fusion**

**Analytical Method: Atomic Absorption Spectroscopy (AAS), Inductively Coupled Plasma Optical Emission Spectroscopy (ICPOES)**

A prepared sample is fused with a neutral lead oxide flux inquartered with 4 mg of gold-free silver and then cupelled to yield a precious metal bead. The bead is digested for one hour in 1.0ml of dilute nitric acid. Hydrochloric acid (1.0ml) is then added and the solution is digested for an additional hour. The digested solution is then cooled, diluted to 6.0 ml with double distilled water, mixed and then analyzed by AAS or ICPOES.

Certified reference samples from CANMET, West Coast Minerals, or Rocklabs are analyzed with each batch. In addition, duplicate check analysis and method blank analysis are also run with the samples. A CRM sample is inserted with every batch of 20 samples.

Au detection limit is 0.005 ppm, or 5 ppb, on a 30g sample.

## **Sample Preparation of Rocks and Core**

Samples undergo multiple stage crushing (minus 10.0 mm) with jaw crushers. For rock and core samples requiring gold analysis, samples may be crushed to <3mm using a cone crusher. Crushed samples are riffle split to 200-250 grams, then pulverized with a ring and puck pulverizer (Spex Industries Inc. Shatterbox) to approximately 100% passing 0.15 mm or 75% passing 0.075mm. Equipment is cleaned with jets of air and silica sand between samples.

66°

65°

47°

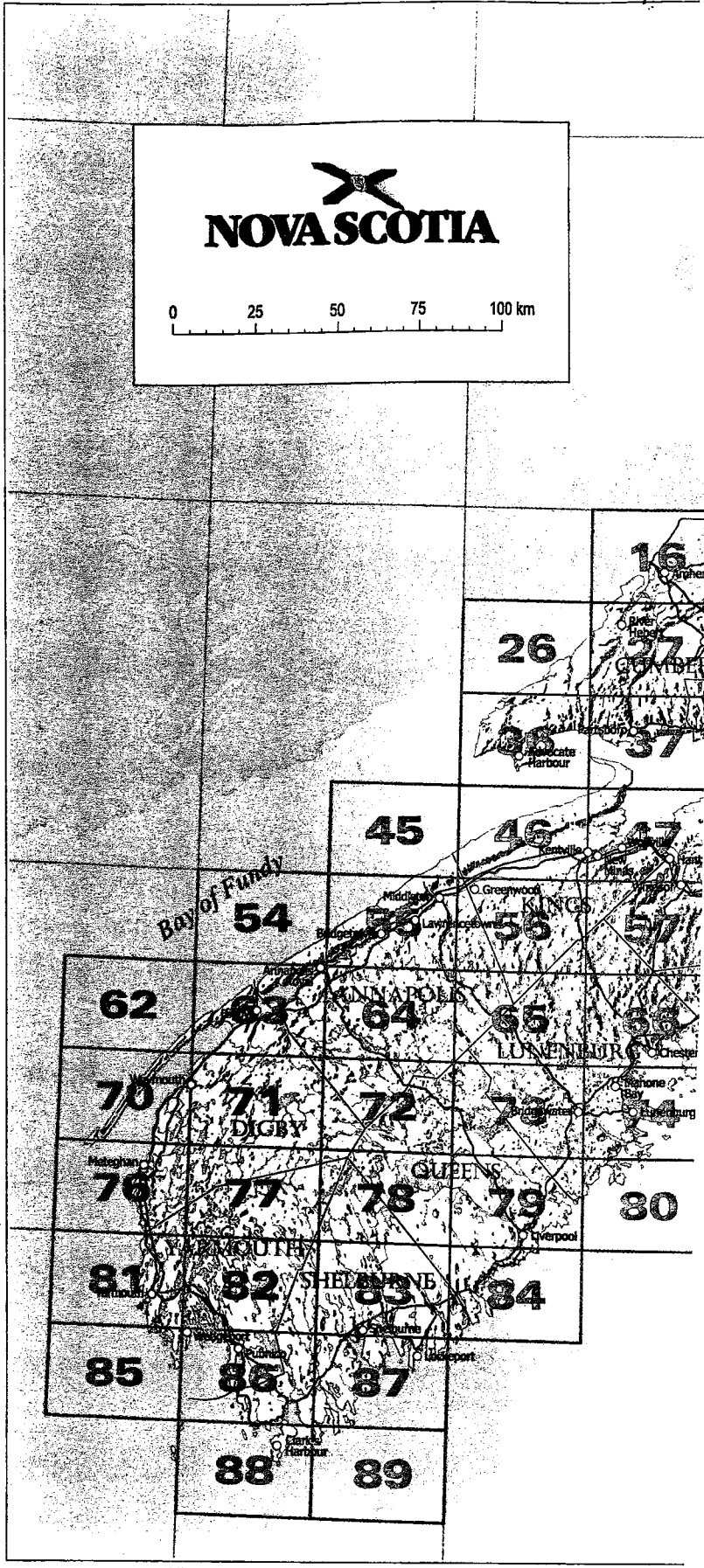
**NOVA SCOTIA**

0 25 50 75 100 km

46°

45°

44°



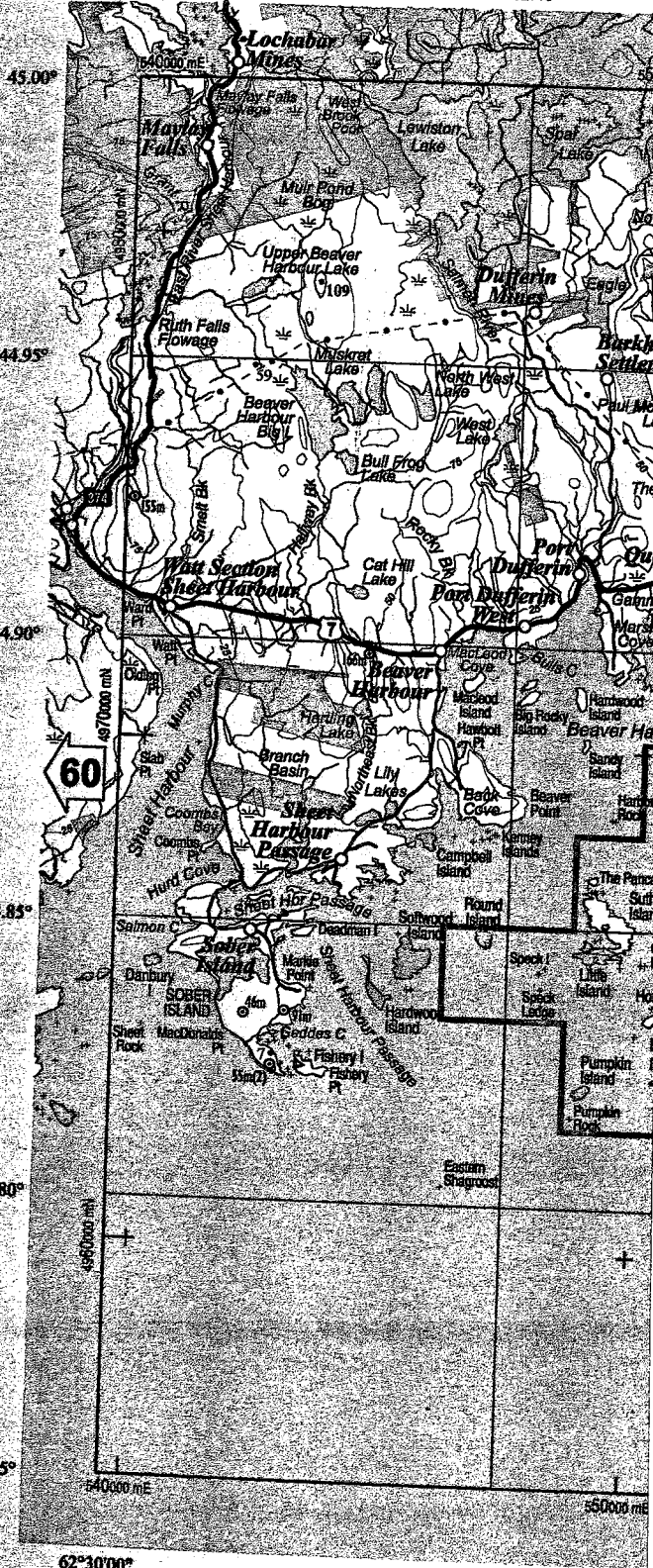
66°

65°

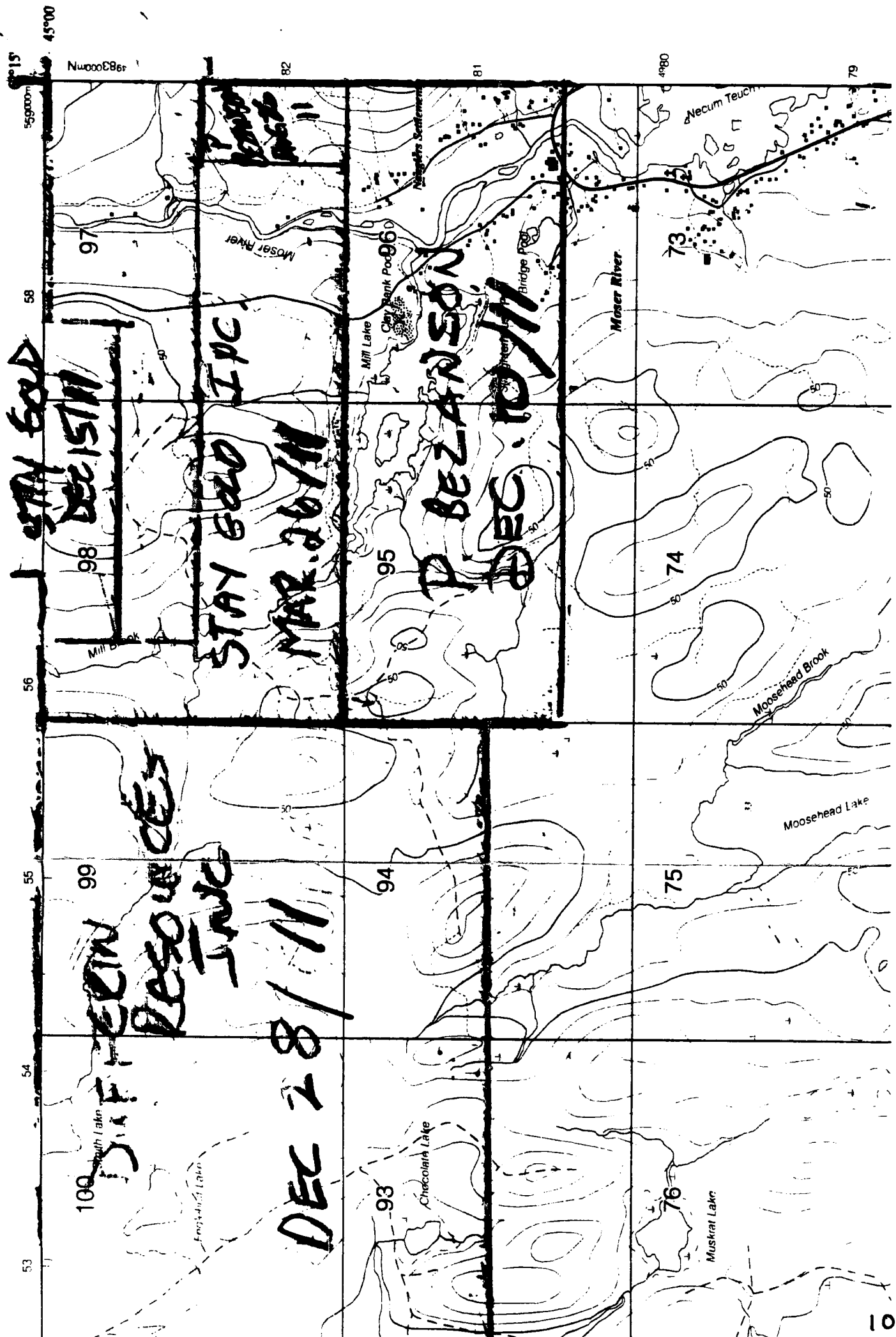
V

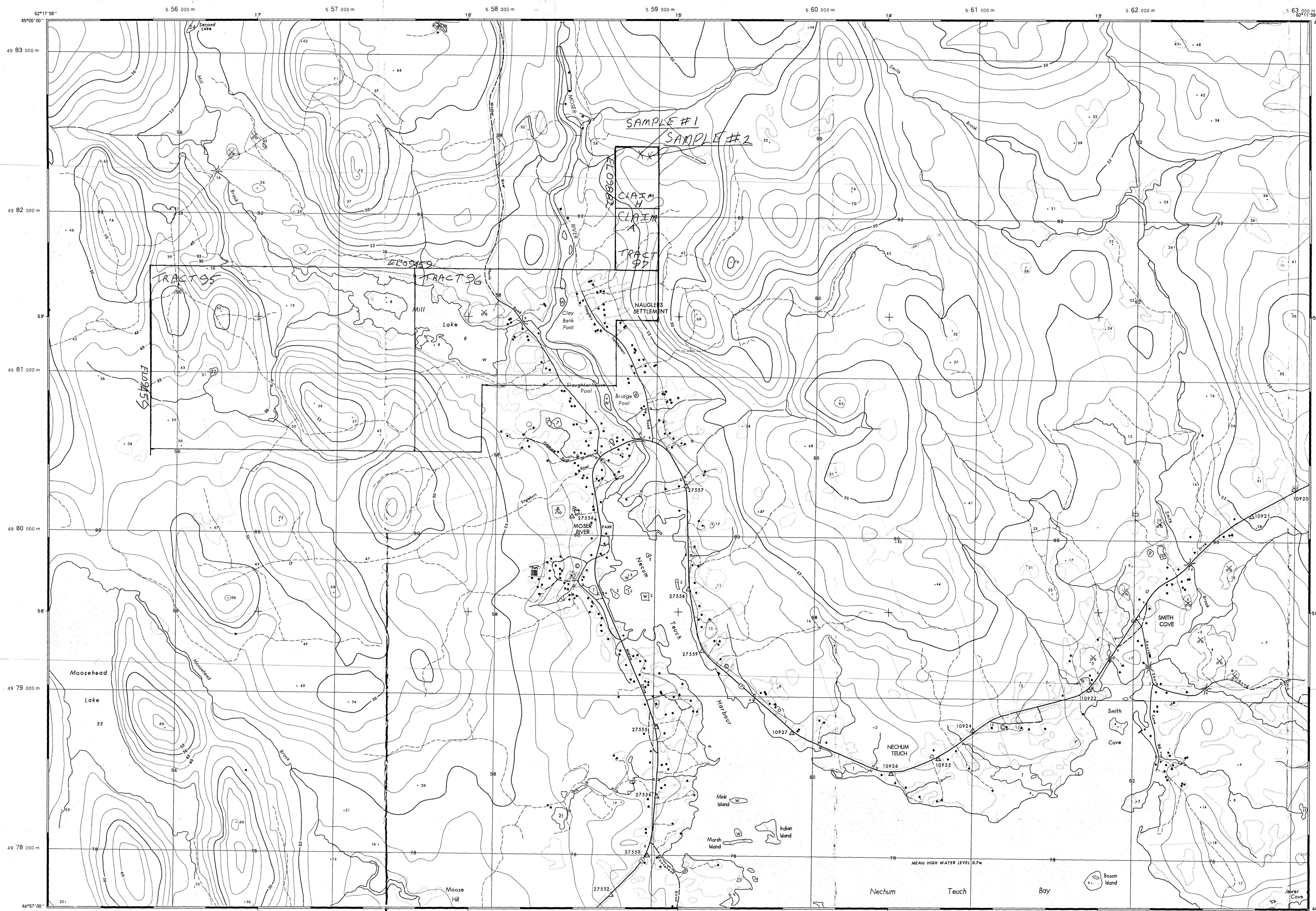
62.50°

62.40°



2001 Magnetic Declination  
19° 51.6' West  
Annual change 7.2' East  
Contour interval 25m  
Projection: Zone 20 UTM NAD83





**MOSER RIVER**  
 COUNTY HALIFAX COMTÉ  
 NOVA SCOTIA NOUVELLE-ÉCOSSE  
 SCALE 1:10 000 ÉCHELLE  
 SHEET 10 44 9500 62 200 FEUILLE  
 TOPOGRAPHIC SERIES SÉRIE TOPOGRAPHIQUE

CONTOUR INTERVAL 5 METRES  
 EQUIDISTANCE DES COURBES DE NIVEAU 5 MÈTRES

Contours have been generated from Digital Elevation Models  
 Les courbes de niveau ont été produites d'après des modèles numériques d'altitude

All Elevations in Metres above Canadian Geodetic Datum  
 Toutes les élévations en mètres sont cotées par rapport au Réseau géodésique canadien

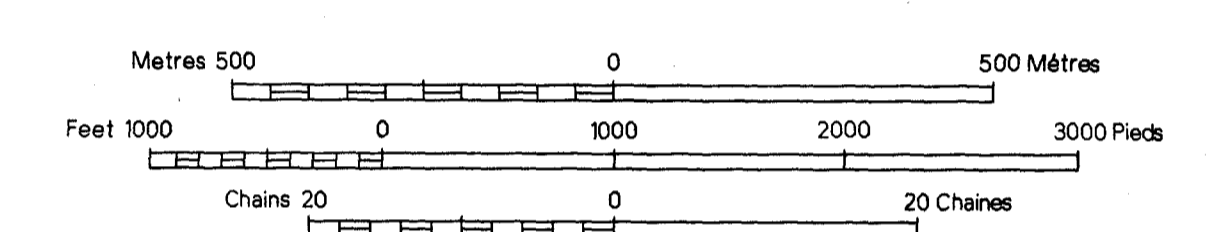
Compilation extends to the mean high water level in the tidal areas and to the water level at time of photography for other water features. Notations of mean high water levels are intended for information purposes rather than accuracy, and therefore should not be considered definitive.  
 La cartographie s'étend jusqu'au niveau d'eau moyen le plus élevé dans les régions de marée et pour les autres éléments hydrographiques jusqu'au niveau d'eau au moment où les photos ont été prises. Les notations relatives aux niveaux moyens des hautes eaux sont incluses pour information seulement et ne devraient pas être considérées comme définitives.

This mapping compiled from aerial photography flown in June, 1997  
 Ces cartes ont été établies à partir de photographies aériennes prises en Juin, 1997

The position of boundaries is approximate.  
 La position des limites est approximative.

Clearly defined features have a horizontal accuracy of 2.5m or better  
 Some features have been modified for cartographic display  
 L'exactitude de la représentation horizontale d'entités bien définies est de l'ordre de 2.5m ou moins  
 Certaines entités ont été modifiées en vue de la présentation cartographique

Produced by DEPARTMENT OF HOUSING AND MUNICIPAL AFFAIRS  
 Préparé par le NOVA SCOTIA GEOMATICS CENTRE, AMHERST, N.S.  
 HABITATION ET AFFAIRES MUNICIPALES LE CENTRE GEOMATIQUE DE LA NOUVELLE-ÉCOSSE, AMHERST, N.S.

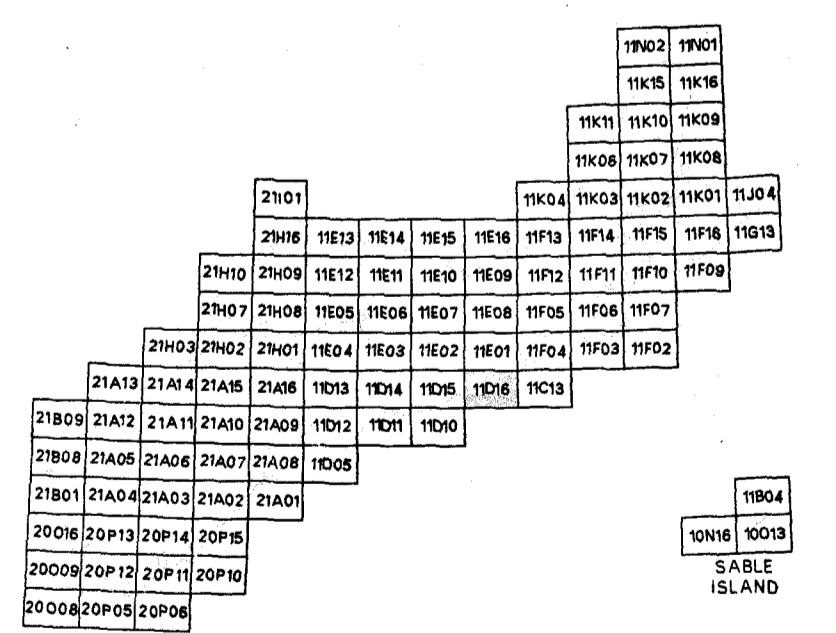


**NOVA SCOTIA**  
 Housing and Municipal Affairs  
 Land Information Services

INDEX TO NTS : 11D/16  
 SNC DE RÉFÉRENCE :

10	10	10	10	10
44 9500	44 9500	44 9500	44 9500	44 9500
62 400	62 300	62 200	62 100	62 000
10	10	10	10	10
44 9500	44 9500	44 9500	44 9500	44 9500
62 400	62 300	62 200	62 100	62 000
10	10	10	10	10
44 8500	44 8500	44 8500	44 8500	44 8500
62 400	62 300	62 200	62 100	62 000

INDEX TO ADJOINING MAPS OF THE NATIONAL TOPOGRAPHIC SYSTEM  
 TABLEAU D'ASSEMBLAGE DU SYSTÈME NATIONAL DE RÉFÉRENCE CARTOGRAPHIQUE



Primary Reference Grid<sup>84</sup> UTM Projection, Zone 20, based on North American Datum 1983 (NAD83) / Réalisation July 1989

All features in this product were transformed by INGRID version 1.1 Jan-1989 software using a July, 1989 realization grid shift file.

Grid North at Center of Sheet 0°31'48.4" East of True North  
 Nord quadrillage au centre de la feuille à l'est du nord géographique

Magnetic Declination in 1996 20°41'30.0" West of True North  
 Déclinaison magnétique en 1996 à l'ouest du nord géographique

Annual Change East/West: 0°04'12.0" / Variation annuelle vers l'est:

<p>Main highways 100 Series, Trunk, Route</p> <p>Secondary highways Local road, street, Unpaved, Track, trail, Railway, Turntable, Railway, abandoned, Bridge, abandoned, Culvert, Overpass, Tunnel, Embankment, Cutting, Retaining wall, Wall, Fence, Pipeline, above ground, Pipeline, underground, Electrical transmission line</p>	<p>Routes principales Série 100, Route principale, Route</p> <p>Routes secondaires Route locale, Route non pavée, Chemin de terre, sentier, Chemin de fer, plaque tournante, Chemin de fer abandonné, Pont, Passage supérieur, Tunnel, Ramblais, déblais, mur de soutènement, Mur, Clôture, Pipeline, sur terre, Pipeline, sous terre, Ligne de transmission électrique</p>	<p>Boundaries Provincial, County, Municipal, Community, Park, Reserve, Designated area, Control survey monument, Quarry, Gravel pit, Exhibition grounds, Ski area, Cemetery, Recreational, Swimming pool, Silo, Disposal pit</p>	<p>Frontières-limites Provinciale, Comté, Municipale, Communauté, Parc, Zone, Réserve, Terrain désigné, Repère géodésique, Carrière, Gravier, Mine, Terrains d'exposition, Centre de ski, Remonte mécanique, Pilette d'estacade, Climatière, Piste de courses, Piscine, Silo, Aménagement de décharge</p>	<p>Building, large, Building, small, Church, School, Post Office, Hospital, Police Station, Fire Station, Graveland, Pumping Station, Built up area, Mobile home park, Ski lift, Depot, Storage area, Landfill, Auto salvage yard, Parking, Ferry, Weigh scale, Fur farm</p>	<p>Édifices, grand, Édifices, petit, Église, École, Bureau de poste, Hôpital, Station de police, Poste de pompage, Tribune, Station de pompage, Agglomération, Parc de maisons mobiles, Zone de construction, Dépot, Zone de stockage, Lieu d'enfouissement, Stationnement, Traversier, Balance, Ferme d'animaux à fourrages</p>	<p>Airfield, paved, Airfield, unpaved, Campground, Golf course, Historical site, Tower, Outdoor theatre, Picnic area, Shooting range, Sport field, Sub station, Sewage treatment plant, Tank, Edge of trees, Free, Line of trees, Cut line, Orchard, Nursery, Restoration area, Wood island, Peat cutting</p>	<p>Piste d'atterrissage pavée, Piste d'atterrissage non pavée, Terrain de camping, Terrain de golf, Lieu historique, Tour, Théâtre de plein air, Terrain de pique-nique, Terrain de tir, Terrain de sports, Sous-station, Usine d'épuration des eaux usées, Réservoir, Bord des arbres, Aire, Rangée d'arbres, Parcelle, Vergers, pépinière, Zone de réboisement, Tle boisée, Extraction de tourbière</p>	<p>Wharf, Brestwater, Slipway, Lighthouse, Reservoir, Canal, Barrage, Fish hatchery, Lake or Pond, Water elevation, Swamp, Stream, Stream, position approximate, Dike, Sewage treatment plant, Ditch, Falls, Rapids, Dam, Beaver dam, Cliff, Spot elevation, Contours, indistinct, Contours, depression</p>	<p>Quai, brise-lames, cale de lancement, Bassin de rétention, Ruche, Canal, Barrage, Pisciculture, Lac ou étang, Merisage, Ruisseau, position approx., Dighe, Fosse, Chutes, rapides, Barrage, digue de castor, Point coté, Courbes de niveau, Courbes de niveau imprécises, Courbes de cuvette</p>
--	---	--	---	--	--	---	---	---	---

FINAL

Form 10 - Statement of Assessment Work Expenditure  
(pursuant to the Mineral Resources Act, S.N.S. 1990, c. 18, s. 43(1))

(Complete as necessary to substantiate the total claimed.)  
Re: Licence No. 09882 Date of issue AUG 26 2011

R

Type of Work		Amount Spent
1. Prospecting	2 MEN X 3 days	\$1200.00
2. Geological mapping	_____ days	
3. Trenching/stripping/refilling	_____ m <sup>2</sup> / _____ m <sup>3</sup>	
4. Assaying & whole rock analysis	2 #	\$47.50
5. Other laboratory	_____ #	
6. Grid:		
(a) Line cutting	_____ km	
(b) Picket setting	_____ km	
(c) Flagging	_____ km	
7. Geophysical surveys		
Airborne:		
(a) EM/VLF	_____ km	
(b) Mag or Grad	_____ km	
(c) Radiometric	_____ km	
(d) Combination	_____ km	
(e) Other _____	_____ km	
8. Geophysical surveys		
Ground:		
(a) EM/VLF	DNRMPT SEP 18 '12 10:00 _____ km	
(b) Seismic soundings	_____ #	
(c) Magnetic/telluric	_____ km	
(d) IP/resistivity	_____ km	
(e) Gravity	_____ km	
(f) Other _____	_____ km	
9. Geochemical surveys		
(a) Lake, stream, spring		
(i) Water	_____ samples	
(ii) Sediments	_____ samples	
(b) (i) Rock	_____ samples	
(ii) Core	_____ samples	
(iii) Chips	_____ samples	
(c) (i) Soil	_____ samples	
(ii) Overburden	_____ samples	
(d) Gas	_____ samples	
(e) Biogeochemistry	_____ samples	
(f) Sample collection	_____ samples	
(g) Other _____	_____ days	
10. Drilling:		
(a) Diamond (# holes/m)	_____ / _____ m	
(b) Percussion (# holes/m)	_____ / _____ m	
(c) Rotary (# holes/m)	_____ / _____ m	
(d) Auger (# holes/m)	_____ / _____ m	
(e) Reverse circulation (# holes/m)	_____ / _____ m	
(f) Logging, supervision, etc.	_____ / _____ m	
(g) Sealing (# holes)	_____ days	
11. Other (describe) <u>M.BALS \$100.00</u> <u>MILEAGE 489 km X .40 = 195.60</u>		295.60
Subtotal		1543.10
Overhead costs		154.31
12. Secretarial services		
13. Drafting services		
14. Office expenses (rent, heat, light, etc.)		
15. Field supplies		
16. Compensation paid to landowners		
17. Legal fees		
18. Other (describe)		
Subtotal		1697.41
Grand total		1697.41

List the names of the persons who conducted the work reported in the previous table and the dates during which the work was performed.

Name	Address	Dates Worked
PERRY T. BEZANSON	880 RR#1. Box 232 NEW CHESTER RD	JULY 2012 23, 30-31
	N.S. BOJZKO	AUG. 2012 08+09
HERMAN R. BEZANSON	266 RR#1. Box 109 ECUM SACUM N.S.	JULY 2012 23, 31
	BOJZKO	AUG 2012 09
SARAH C. BEZANSON	DARTMOUTH N.S.	AUG. 2012 08

I hereby certify that the information in this form is true and correct, that it has not before been submitted for assessment work credit and that it is the total of all work conducted on the licence during the past licensed year.

As PERRY T. BEZANSON I am duly authorized to make this certification.  
(position in company or licensee)

Dated at DARTMOUTH in the Province of N.S. on SEPT 14, 2012

Name and address of licensee: PERRY T. BEZANSON / RR#1 NEW