

INVESTMENT FOR EXPLORATION COMPANIES

CAUTIONARY NOTES

This presentation may contain forward-looking statements including, but not limited to, comments regarding the timing and content of upcoming work programs, geological interpretations, receipt of property titles, potential mineral recovery processes, and other related matters. Forward-looking statements address future events conditions and therefore involve inherent risk and uncertainties. Stockport mining's projects in Kenya, Canada and Mexico are at an early stage and all estimates and projections are based on limited, and possibly incomplete, data. More work is required before the mineralization and the economic aspects of the projects can be confidently modelled. Actual results may differ materially from those currently anticipated in this presentation. No representation or prediction is intended as to the results of future work, nor can there be any promise that the estimates and projections herein will be sustained in future work or that the projects will otherwise prove to be economic.

EXECUTIVE MANAGEMENT TEAM



Wade K Dawe
Chairman



Jim Megann
President & CEO



Rob Randall
VP and CFO



Peter Webster
P.GEO



Christine Nyamvula
Project Geologist



Benson Oketch
Government and
Community Relations

BOARD OF DIRECTORS

Wade K Dawe
Brian MacEachen
Carl Sheppard
Zeph Mbugua
Robert Mckay

ASSET PORTFOLIO

Seymour Lake



Ontario, Canada

Lithium
Tantalum
Beryllium

La Morena



Coahuila, Mexico

High-grade
Silver intercepts
Copper

Kilometre 61



Ontario, Canada

Molybdenum
NI 43-101
110m tonnes
0.065% Mo Eq.

Kenya

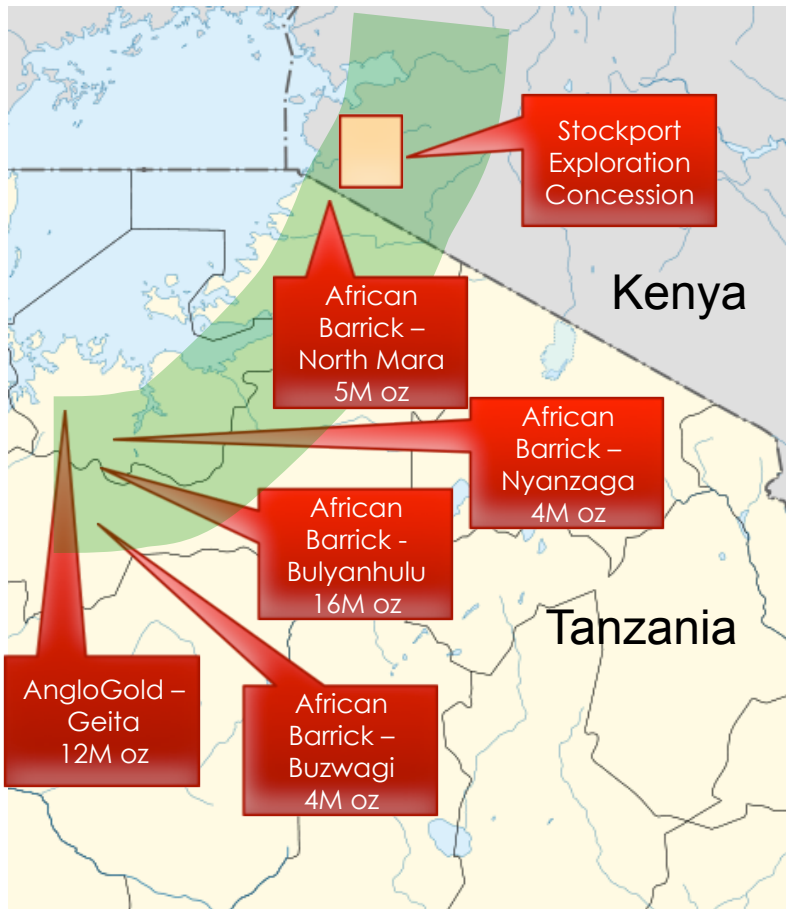


Nyanza, Kenya

Gold
Base Metals
Iron

LAKE VICTORIA GREENSTONE BELT

GOLD RESERVES AND RESOURCES IN THE AREA

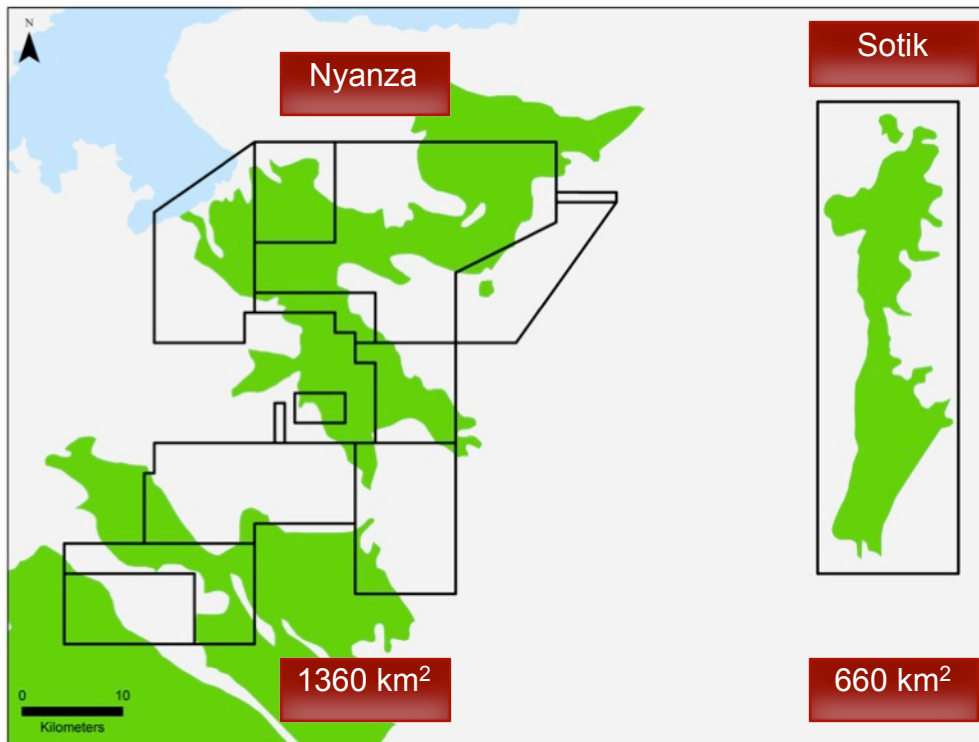


Stockport Exploration Long-term focus

- Archean Greenstone Belt
- Proven deposits to the south of our concessions
- Kenya has very limited modern exploration
- Opportunity for multiple major deposits
- Stable government and economy

KENYA

NYANZA AND SOTIK PROJECT



Nyanza Project

Stockport has right to earn 70% - 95% interest from East African Pure Gold and B&M Mining

On-going exploration targets:

- 214
- 258 Central
- 258 West
- 231 Central

Sotik Project

100% Stockport Exploration owned

BOARDROOM MATTERS

**A GUIDE TO MATCHING INVESTOR OBJECTIVES WITH GEOLOGICAL
PROGRAMS**



HAVE YOU EVER HEARD AN INVESTOR SAY...

- WHEN ARE WE GOING TO DRILL?
- WHAT ABOUT THAT RED SPOT ON THE MAP?
- I JUST HAVE A FEELING THERE MIGHT BE SOMETHING HERE ON THE MAP.
- AND YOU'RE ABSOLUTELY SURE WE WILL GET GREAT RESULTS IF WE RUN THIS PROGRAM?
- IF YOU HAD TO SAY RIGHT NOW, HOW BIG DO YOU THINK THIS DEPOSIT COULD BE?



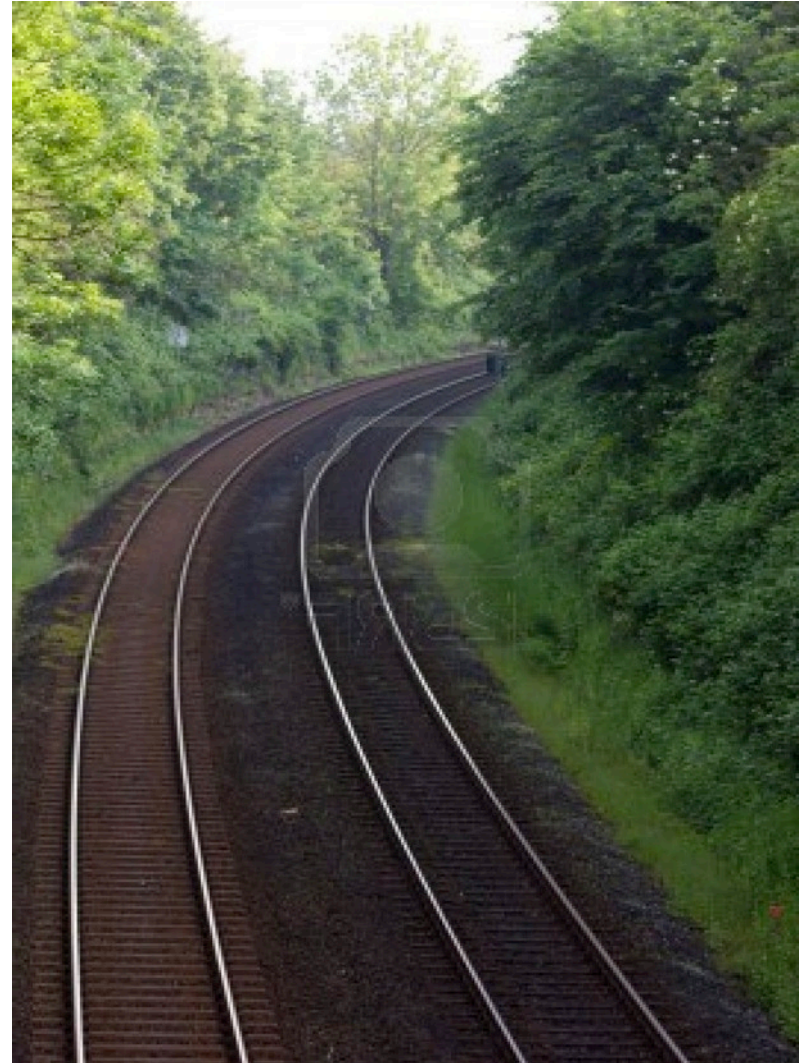
TWO TRACKS TO THE SAME GOAL

GEOLOGY

- UNDERSTANDING THE REGIONAL AND LOCAL GEOLOGY
- DETERMINING STRUCTURE
- MAXIMIZING THE EXPLORATION POTENTIAL
- FINDING DEPOSITS
- UTILIZING BEST PRACTICES
- LEARNING TO APPLY TO FUTURE EXPLORATION
- MAKING MONEY

INVESTORS

- MAKING MONEY





**GEOLOGY DRIVEN
PROGRAMS**

**SUPPORTIVE
INVESTORS**

FINDING THE BALANCE

WHO IS THE INVESTOR?

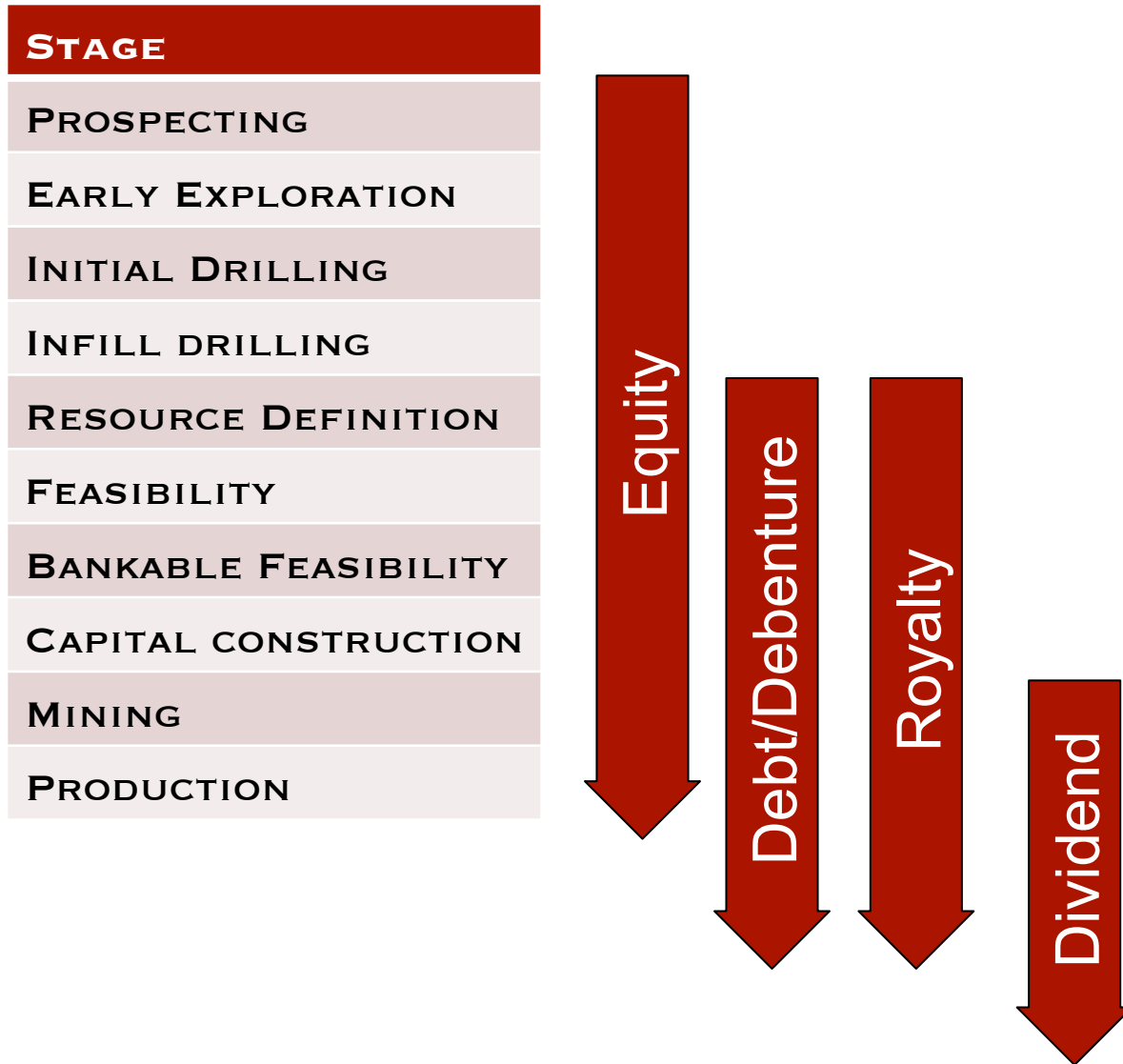
- **AAA PERSONALITY**
- **INVESTORS ARE TYPICALLY QUITE SUCCESSFUL:**
 - BELIEVE THEY ARE MORE SUCCESSFUL THAN YOU
 - OFTEN THEY BELIEVE THEIR UNIQUE INSIGHT WILL BRING AN ADVANTAGE TO ANY BUSINESS
 - FREQUENTLY NOT AS WELL VERSED IN GEOLOGY AS YOU MIGHT EXPECT
- **THEY MAKE EMOTIONAL DECISIONS – THEY NEED TO BELIEVE IN YOUR POTENTIAL SUCCESS**
- **THE COMPANY TEAM AND THE PERSON WHO INTRODUCES THEM ARE OFTEN THE MOST IMPORTANT FACTOR IN INVESTING**

THEIR EXIT STRATEGY COMPLETELY DEFINES THEIR ENTRY POSITION

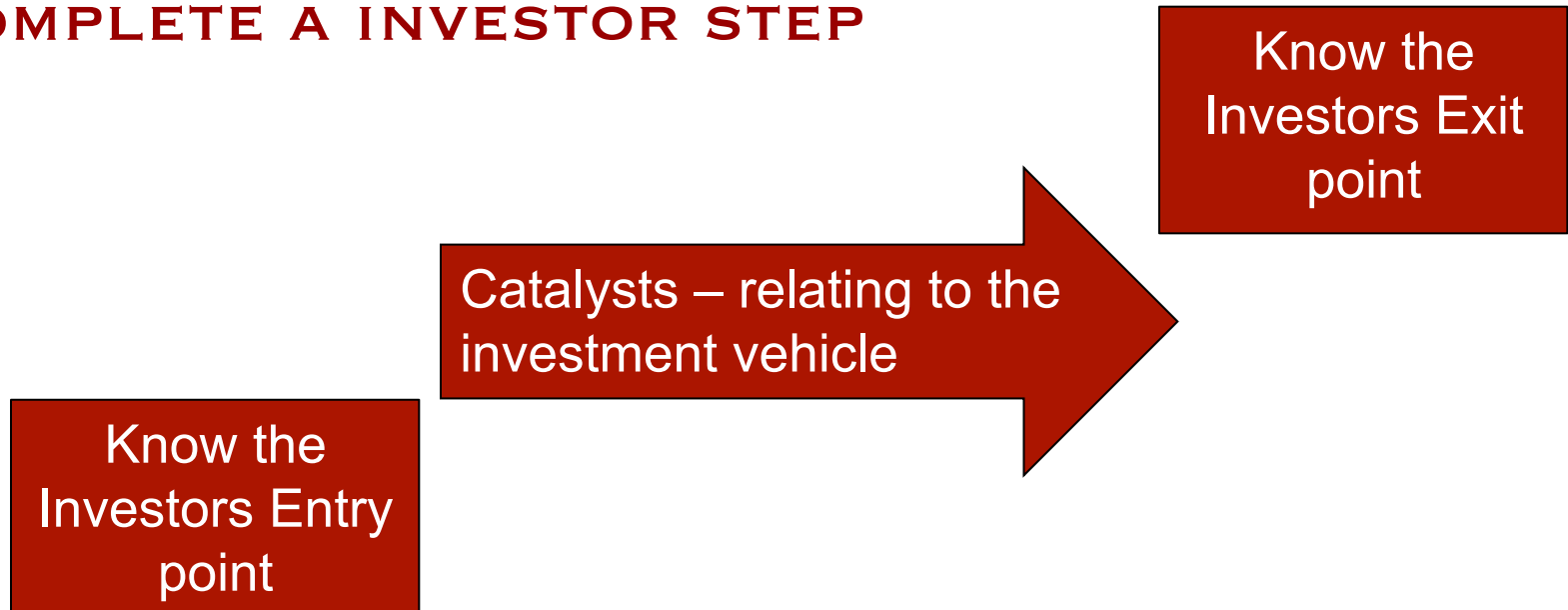


GEOLOGY LASTS THE ENTIRE PROJECT

INVESTORS ROTATE IN AND OUT



**EVERY GEOLOGICAL PROGRAM SHOULD
COMPLETE A INVESTOR STEP**



Develop programs that match investor stages
And realizes value to justify the exit

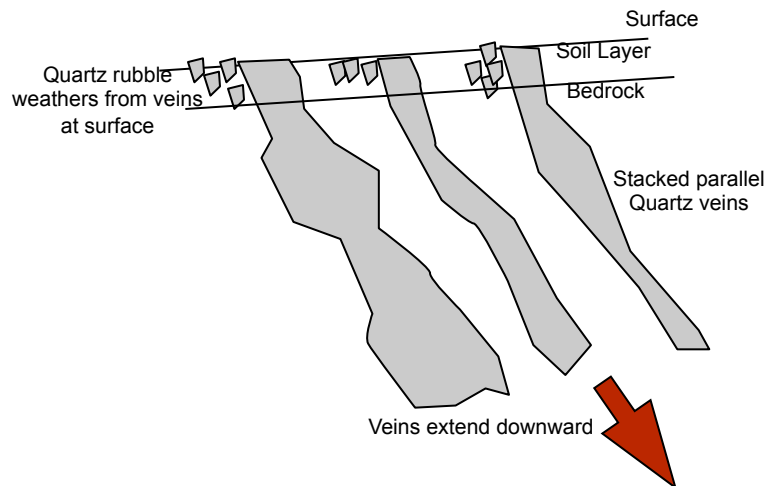
GEOLOGY THAT'S RIGHT PROGRAM AND THE INVESTOR

OUR CURRENT FOCUS

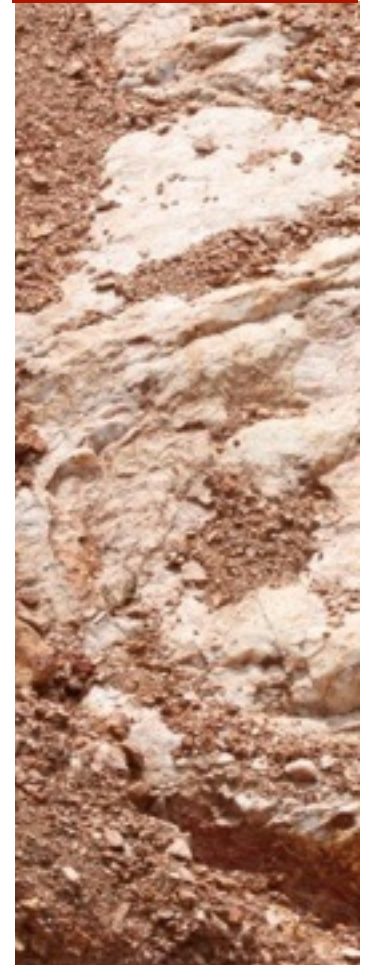
KENYA - NYANZA AND SOTIK

KENYAN CONCESSIONS

- THE AREA TENDS TO SEE STACKED PARALLEL QUARTZ VEINS WHICH CAN PROVIDE THE OPPORTUNITY FOR COST EFFECTIVE MINING OPERATIONS
- STOCKPORT HAS UNDERTAKEN A LIMITED DRILLING PROGRAM ON OUR TOP 2 PRIORITY TARGETS AT NYANZA. TO DATE, A STACKED PARALLEL QUARTZ VEIN SYSTEM WITH HIGH-GRADE INTERCEPTS HAS BEEN CONFIRMED AT THE 214 TARGET.



TSX: SPT



HISTORY OF SURFACE MINING



Current Artisanal Mining at 214

- DOZENS OF ARTISANAL OPERATIONS HAVE BEEN MAPPED ON SPL 214
- WIDESPREAD GOLD OCCURRENCES HAVE BEEN IDENTIFIED ON THE CONCESSION
- THE LARGEST OPERATION (SEEN TO THE LEFT) CAN SUPPORT UP TO 150 LABOURERS PER DAY

HISTORY OF SURFACE MINING



Current Artisanal Mining at 214

ARTISANAL PROCESS

- MATERIAL IS HAND DUG
- THE 'BY-HAND' APPROACH FORCES ARTISANAL MINERS TO FOCUS ONLY ON THE HIGHEST-GRADE, MOST ACCESSIBLE MATERIAL
- ALMOST ALL MATERIAL PROCESSED IS QUARTZ - SOILS ARE RARELY PROCESSED

HISTORY OF SURFACE MINING



Local Artisanal miner at 214 using a home-made sluice

ARTISANAL PROCESS

- RUDIMENTARY PROCESSING TECHNIQUES ARE EMPLOYED
- QUARTZ STONES ARE GROUND TO A POWDER AND PROCESSED WITH WATER AND GRAVITY USING HOME-MADE SLUICE

HISTORY OF SURFACE MINING



Current Artisanal Mining at 214

ARTISANAL PROCESS

- MOST GOLD EXTRACTED BY LOCAL MINERS IS FROM HARD ROCK QUARTZ VEINS SLIGHTLY BELOW SURFACE

PROPOSED PROGRAM

STOCKPORT IS CONSIDERING A TWO-PHASED GOLD RECOVERY PROGRAM

PHASE ONE - EXTRACTION PLANNING - 6-12 MONTH DURATION

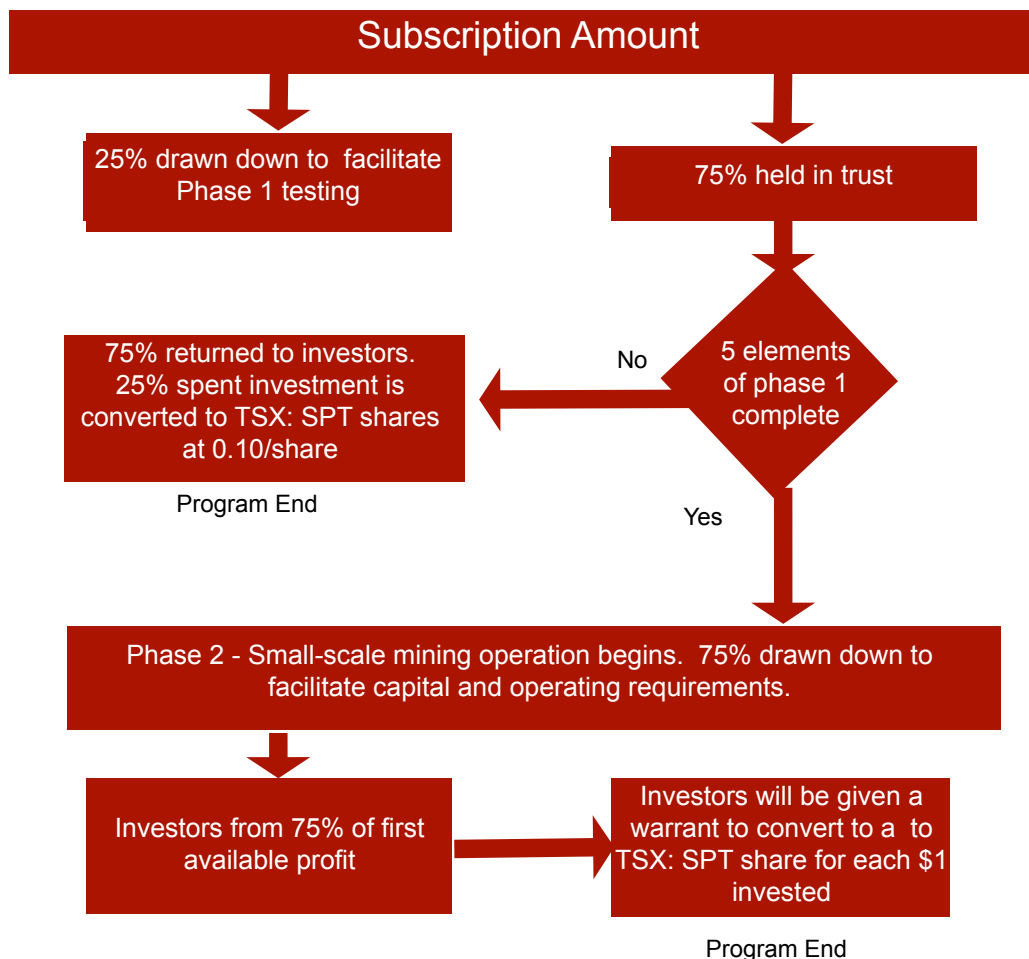
1. FURTHER SAMPLING TO FULLY DEFINE THE POTENTIAL AMOUNT OF GOLD TO BE EXTRACTED AS WELL AS FINALIZING A PLAN FOR MINING
2. SECURING GOK MINING AND GOK ENVIRONMENTAL PERMITS
3. UNDERTAKING METALLURGY STUDY ON THE SOIL AND ROCK TYPES TO DETERMINE THE MOST EFFICIENT PROCESS TO MAXIMIZE GOLD RECOVERY
4. SOURCING MINING EQUIPMENT
5. SECURING LAND ACCESS AGREEMENT WITH LOCAL FARMERS

PROPOSED PROGRAM

PHASE TWO - EXTRACTION

- A WATER-GRAVITY PLANT WILL BE SOURCED AND CONSTRUCTED ON 214.
- A WATER GRAVITY PLANT AND THE TAILINGS (RESIDUAL SOILS) WILL BE ENVIRONMENTALLY FRIENDLY.
- SMALL PARCELS OF LAND WILL BE LEASED FROM FARMERS AT ABOVE MARKET RATES. LAND WILL BE RETURNED TO FARMERS FERTILIZED, TILLED AND READY FOR PLANTING, ALONG WITH A SEED ALLOCATION.
- REVENUE FROM THE GOLD MINING OPERATION WILL FUND INVESTOR RETURN AND EXPLORATION ACTIVITY FOR STOCKPORT CONCESSIONS TO PROVE A GOLD RESERVE FOR LARGER SCALE MINING IN THE FUTURE.

INVESTMENT OFFERED IN KENYA FIRST



- **ONLY 25% OF THE INITIAL INVESTMENT IS AT RISK, AND FULLY CONVERTIBLE TO SHARES**
- **5 ELEMENTS OF PHASE 1 TESTING HAVE TO BE COMPLETED TO MOVE TO PHASE 2**
- **WITH A SUCCESSFUL SMALL-SCALE MINING OPERATION, INVESTORS WILL EARN 100% INTEREST ON THEIR INVESTMENT, AND THEN CONVERT TO SHARES.**

MATCHING PROGRAMS TO INVESTMENTS

INVESTMENT OPPORTUNITIES - EQUITY, LONG POSITIONS, SHORT POSITIONS, DEBENTURES, CAPITAL FINANCING, ROYALTY FINANCING, BRIDGE FINANCING, M&A, JOINT VENTURE, THRESHOLD PAYMENTS, NET SMELTER ROYALTY

- **UNDERSTAND EACH INVESTMENT STAGE:**
 - **THE TYPE OF INVESTOR (EMOTIONAL/LOGICAL TRIGGERS)**
 - **WHERE THE ENTRY POINT IS ON THE EXPLORATION CYCLE**
 - **WHAT IS THAT INVESTOR'S EXIT STRATEGY**
 - **WHOSE ENTRY WILL MATCH THE PREVIOUS INVESTOR'S EXIT**

- **MATCH YOUR PROGRAMS TO EACH STAGE**
 - **TIMING, RESULTS, ENTRY, EXIT,**
 - **BUILD VALUE WITH EVERY EXPLORATION PROGRAM**



THANK YOU

Jim Megann

President and CEO
(902) 442-7192

1969 Upper Water Street, Suite 2001
Halifax, NS, Canada, B3J 3R7

JMEGANN@STOCKPORTEXPLORATION.COM

www.stockportexploration.com