

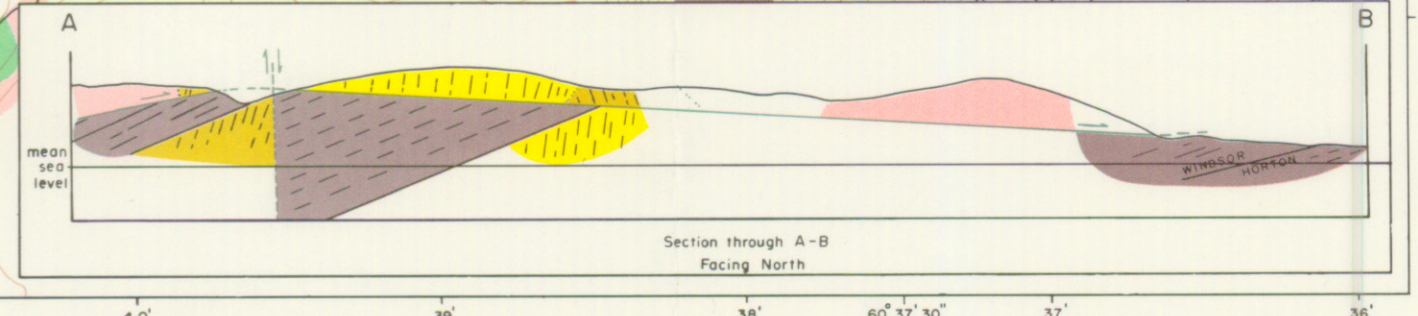
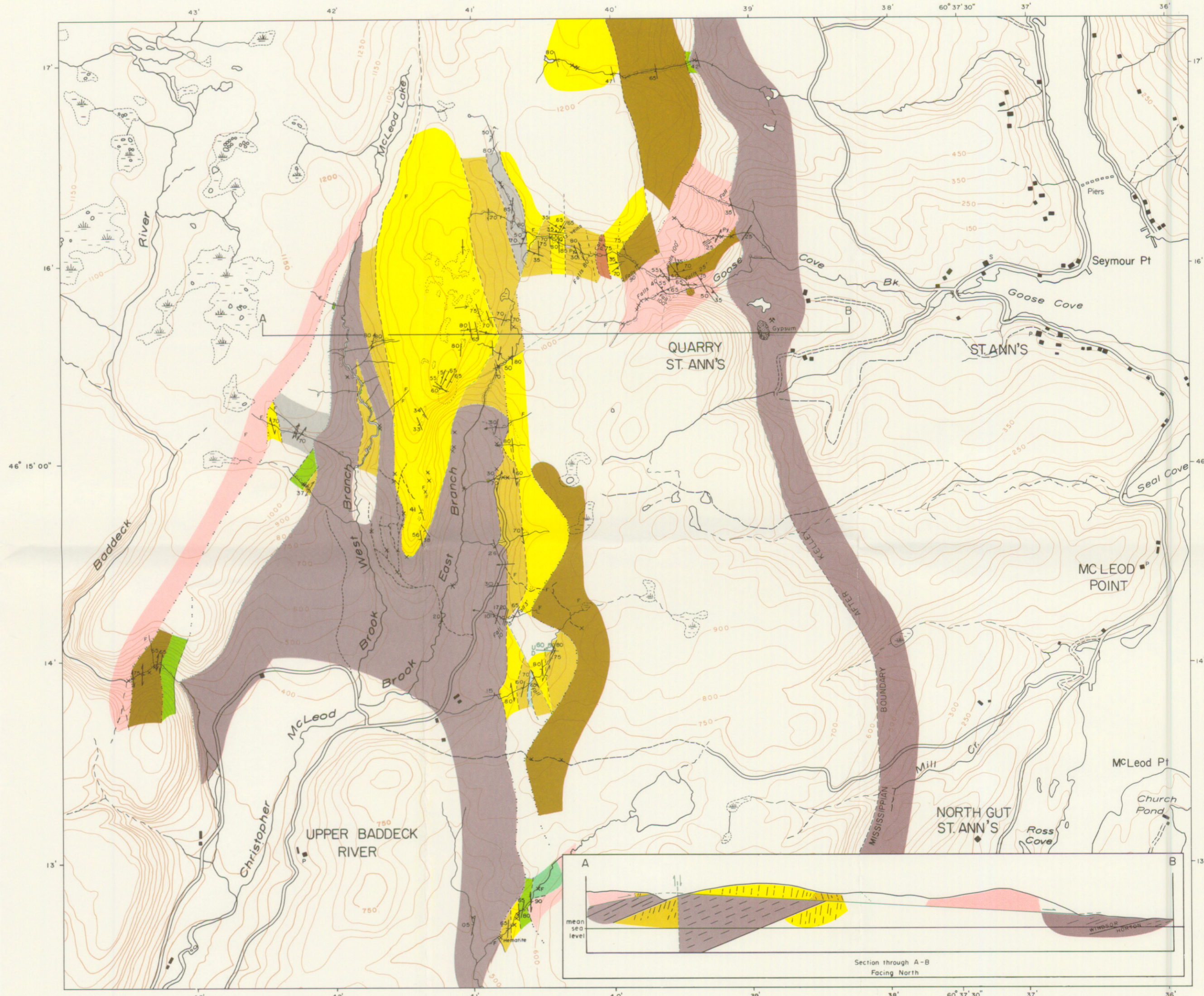
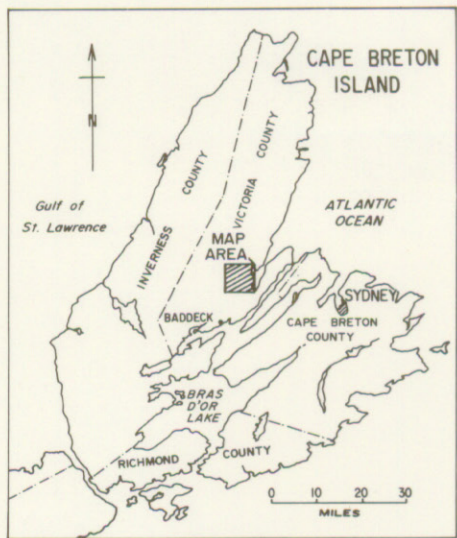
LEGEND

- MISSISSIPPIAN**
- Windsor and Horton  
Conglomerate and coarse sandstone; minor limestone and gypsum.
- DEVONIAN or earlier**
- Granite  
Granodiorite  
Diorite, quartz diorite; minor gabbro. Includes minor early and late lamprophyre dykes.
- PRECAMBRIAN**
- George River Group  
Quartzite  
Limestone  
Dolomite  
Amphibolite. Probably mainly volcanic rocks, but much is of uncertain origin; includes minor undifferentiated gabbro and diorite. Some tuff.  
Feldspathic quartzite. Interbedded slate and quartzite.  
Slate; minor interbedded quartzite and feldspathic quartzite.

Geology by G. C. Milligan, with the assistance of Brian White, R. M. Creed and A. K. Chatterjee, 1967.

SYMBOLS

- Strike and dip of bedding: vertical, inclined  
Strike and dip of cleavage or foliation: vertical, inclined  
Strike and dip of fault (observed, approximate, assumed), with plunge of lineation and sense of motion  
Contact: observed, approximate, assumed  
Anticline, syncline  
Drag fold, with plunge and sense of motion  
Outcrop: isolated, adjacent to stream; area of outcrops  
Loose fragments and boulders of "float", dominantly of one rock type  
Roads: metalled, unmetalled, woods road



To accompany Nova Scotia Department of Mines Memoir No. 7.

GEOLOGY MAP ME 1967-003  
AREA OF  
CHRISTOPHER MC LEOD BROOK  
Victoria County, N.S.

