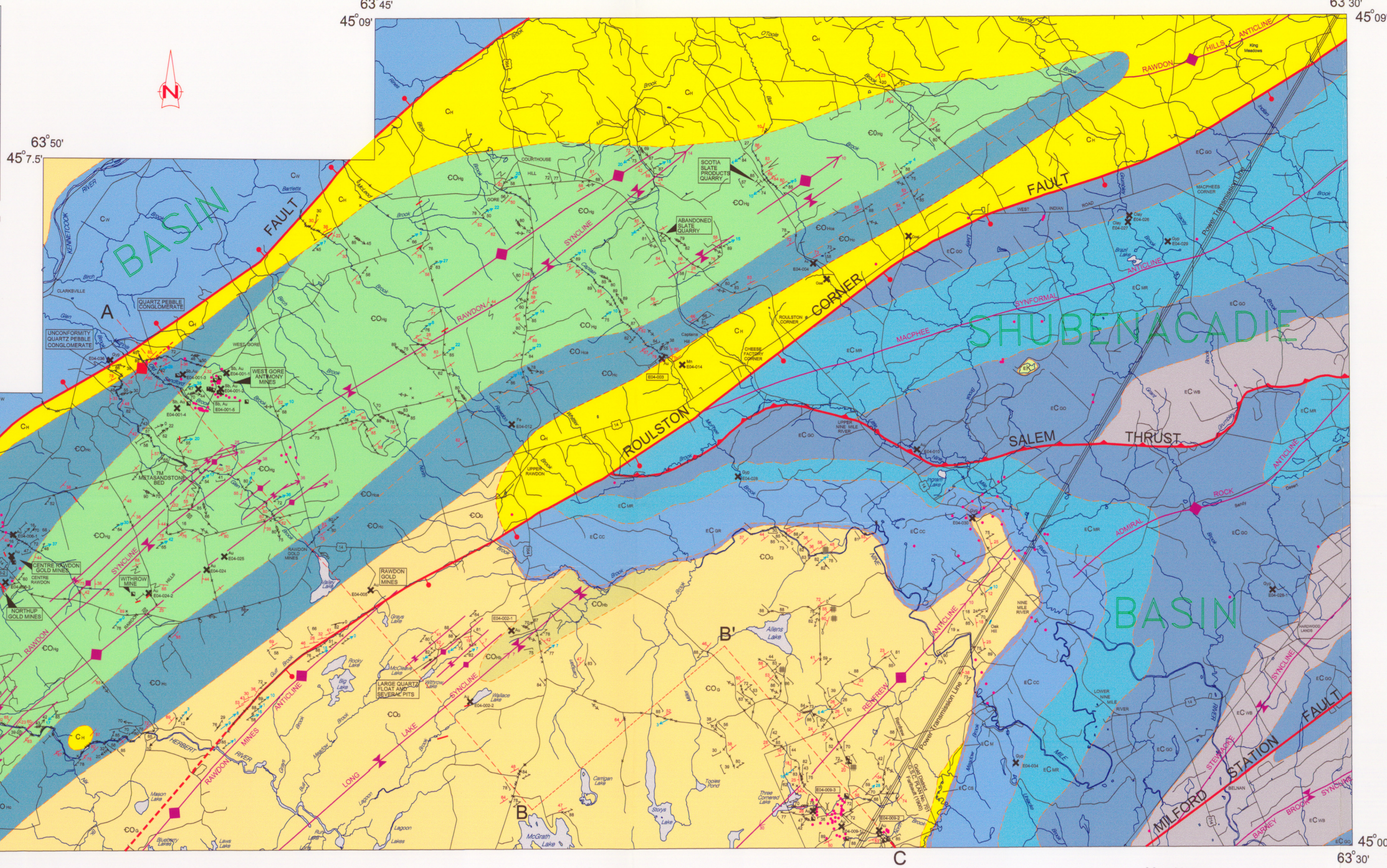


Approximate Map Boundary

NSDNR OFM 97-008	NSDNR OFM 97-003	
NSDNR OFM 97-005	NSDNR OFM 97-002	NSDNR OFM 97-001
NSDNR OFM 98-011	NSDNR OFM 97-004	NSDNR OFM 98-012
	NSDNR OFM 98-013	

Index map of NTS sheet 11E/04, with grid of Nova Scotia 1:10 000 digital topographic database, showing the location of Nova Scotia Department of Natural Resources (NSDNR) Open File Maps (OFM) from which the Meguma Group was compiled.



Nova Scotia Department of Natural Resources  
Minerals and Energy Branch  
**Map ME 2001 - 1**  
Geological map of the Meguma Group in the Rawdon Area  
(Part of NTS 11E/04)  
Hants County  
Nova Scotia

R. J. Home, L. A. MacDonald and M.S. King

Scale 1:50 000  
3° Modified Transverse Mercator (MTM) projection, Central Meridian 64°30' West  
AST 1977 Datum  
Halifax, Nova Scotia  
2001

**Legend**

**KENNETCOOK BASIN**  
(After Stevenson, 1959; Moore, 1989a, b, c)

**CRETACEOUS**

**CARBONIFEROUS**

**CUMBERLAND GROUP**

**MABOU (CANSON) GROUP**

**WINDSOR GROUP**

**HORTON GROUP**

**SHUBENACADIE BASIN**  
(After Giles and Boehner, 1982)

**CRETACEOUS**

**CARBONIFEROUS**

**MABOU (CANSON) GROUP**

**WINDSOR GROUP**

**HORTON GROUP**

**MEGUMA GROUP**

**HALIFAX FORMATION**

**GOLDENVILLE FORMATION**

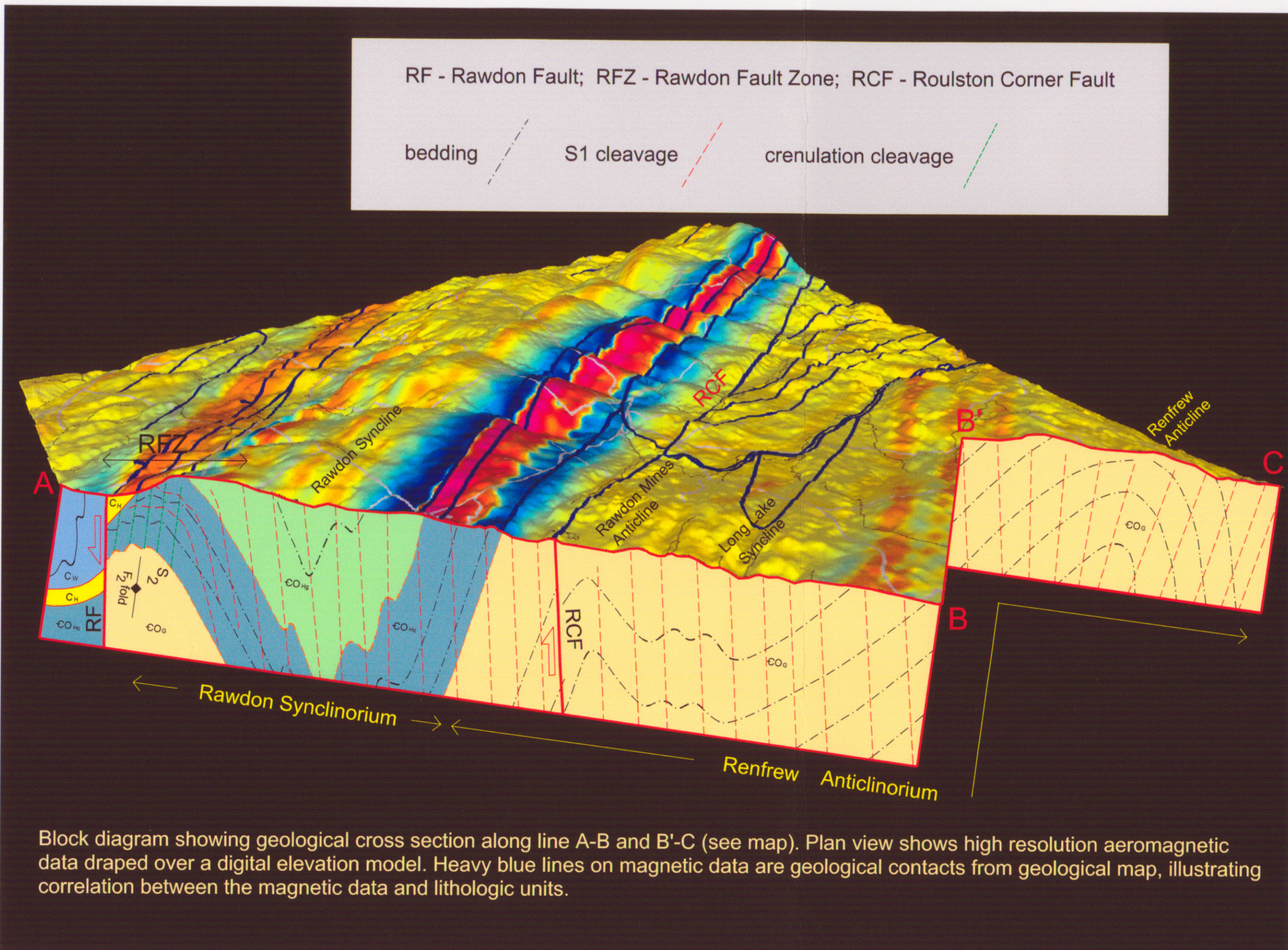
**LEGEND SYMBOLS**

Outcrop, stream section  
Bedding (inclined, vertical, overturned, tops unknown)  
Cleavage (inclined, vertical)  
Bedding-cleavage intersection lineation  
Kink (bifurcal, dextral, unknown, vertical, arrow-headed)  
Shear (normal, reverse, unknown)  
Crenulation cleavage  
Crenulation lineation  
Minor s-fold hinge (1st generation, 2nd generation)  
Parasitic F<sub>2</sub> fold (m-fold, s-fold, z-fold)  
Trend and plunge of bounding axis  
Stretching lineation  
Slip-sense  
Axial plane of second generation fold  
Vein (inclined, vertical)  
Joint (inclined, vertical)  
Cataclastic zone  
Aulic  
Trench  
Quarry (active, abandoned)  
Glacial area (ice flow direction unknown)  
Mineral occurrence  
(Number from Nova Scotia Department of Natural Resources mineral occurrence database)  
Trend and plunge of fold hinges  
Trace of F<sub>1</sub> anticline (approximate)  
Trace of F<sub>2</sub> syncline (approximate)  
Trace of F<sub>3</sub> anticline (approximate)  
Geological contact (approximate or assumed)  
Geological contact (gradational)  
Steep fault (approximate, assumed), solid dot on downthrow side  
Thrust fault (approximate), teeth in direction of dip  
Quartz vein (from Fairbairn, 1908; Pester and Fairbairn, 1905, 1909)  
Cross-section line

64°00'  
45°05'

64°00'  
45°05'

45°00'  
63°30'



**STRUCTURAL FEATURE**

	poles to bedding	poles to axial planar cleavage	poles to crenulation cleavage	bedding-cleavage intersection lineation	crenulation lineation	poles to quartz veins	poles to joints
<b>STRUCTURAL DOMAIN</b>	<b>RFZ</b>	N=153	N=115	N=5	N=19	N=11	N=28
	<b>RS</b>	N=242	N=290	N=2	N=120	N=30	N=31
	<b>RA</b>	N=100	N=70	N=2	N=22	N=42	N=44

Equal area lower hemisphere stereoplots of structural data for three structural domains (see below) in the Meguma Group.

**Structural Domains in the Meguma Group, Rawdon Area**

RFZ - Rawdon Fault Zone  
RS - Rawdon Synclinorium  
RA - Renfrew Anticlinorium

Kennetcook Basin  
Rawdon Fault  
Rawdon Synclinorium  
Rawdon Anticline  
Renfrew Anticlinorium  
Roulston Corner Fault  
Shubenacadie Basin

**Map Notes**

Geology of the Meguma Group compiled from Home (1997a; 1997b; 1997c; 1997d; 1997e; 1997f; 1997g; 1997h) and Home and Fox (1998a; 1998b). Source maps include additional geological information for the Meguma Group and diamond-drill hole numbers.

Geology of the Shubenacadie Basin from Giles and Boehner (1982).

Geology of the Kennetcook Basin modified from Moore (1989a; 1989b; 1989c) by R. Boehner.

Base data derived from the Nova Scotia Topographic Database (NSTDB). Copyright Her Majesty the Queen in Right of the Province of Nova Scotia.

Geological symbols generated by Fieldlog V3.0 (B. Brodaric, Geological Survey of Canada). Note: symbol orientation relative to grid north, approximately 1° east. Approximate magnetic declination, 19° 25'.

Locations of mineral occurrences and diamond-drill holes were adjusted from database location to locations indicated in source.

Data entry and field assistance: Steve King, Darcy Baker, Brian Creaser, Gayle Chapman, Lisa MacDonald, Paul Teniere, Pradeep Bhatnagar.

Digital Elevation Model generated from 1:10 000 base maps (by M.S. King).

Aeromagnetic data after King (1997).

Disclaimer: This map is a compilation of existing geological information, with some interpretation by the compilers. The Nova Scotia Department of Natural Resources does not assume any liability for errors that may occur. Users should verify critical information.

Partial funding provided by the Canada-Nova Scotia Cooperation Agreement on Mineral Development, 1992-1995.

**Sources of Information**

Fairbairn, E.R. 1900: Plan and sections, Renfrew Gold District, Hants Co. Nova Scotia. Geological Survey of Canada Map 701, scale 500 feet to the inch.

Fairbairn, E.R. 1908: Elmistake sheet, Canada Department of Mines, Geological Survey Branch, Map 1095, scale 1:63 300.

Fletcher, H. and Fairbairn, E.R. 1905: Kennetcook sheet, Geological Survey of Canada, Map 878, scale 1:63 300.

Fletcher, H. and Fairbairn, E.R. 1908: Windsor sheet, Canada Department of Mines, Geological Survey Branch, Map 1037, scale 1:63 300.

Giles, P.S. and Boehner, R.C. 1982: Geological map of the Shubenacadie and Musquodoboit basins, central Nova Scotia. NSDME Map 82-A, scale 1:50 000.

Home, R.J. 1997a: Geology of Upper Nine Mile River. NSDNR OFM 97-001, scale 1:10 000.

Home, R.J. 1997b: Geology of Upper Rawdon. NSDNR OFM 97-002, scale 1:10 000.

Home, R.J. 1997c: Geology of East Gore. NSDNR OFM 97-003, scale 1:10 000.

Home, R.J. 1997d: Geology of Greenhill. NSDNR OFM 97-004, scale 1:10 000.

Home, R.J. 1997e: Geology of Greenwood. NSDNR OFM 97-005, scale 1:10 000.

Home, R.J. 1997f: Geology of Gores. NSDNR OFM 97-006, scale 1:10 000.

Home, R.J. 1997g: Geology of Woodville. NSDNR OFM 98-011, scale 1:10 000.

Home, R.J. 1998: Geology of Greenfield. NSDNR OFM 98-012, scale 1:10 000.

Home, R.J. and Fox, D. 1998a: Geology of Bull Meadow Mountain. NSDNR OFM 98-012, scale 1:10 000.

Home, R.J. and Fox, D. 1998b: Geology of Renfrew. NSDNR OFM 98-013, scale 1:10 000.

King, M.S. 1997: Enhanced aeromagnetic digital data, NTS 11E/04, Kennetcook; NSDNR OFM 97-016, scale 1:50 000.

Moore, R.G. 1989a: West Gore quadrangle. NSDME OFM 89-002, scale 1:10 000.

Moore, R.G. 1989b: Newport Corner quadrangle. NSDME OFM 89-003, scale 1:10 000.

Moore, R.G. 1989c: Centre Rawdon quadrangle. NSDME OFM 89-004, scale 1:10 000.

Stevenson, I.M. 1959: Geology of Kennetcook. Geological Survey of Canada Map 1075A, scale 1:63 300.

NSDME - Nova Scotia Department of Mines and Energy  
NSDNR - Nova Scotia Department of Natural Resources  
OFM - Open File Map