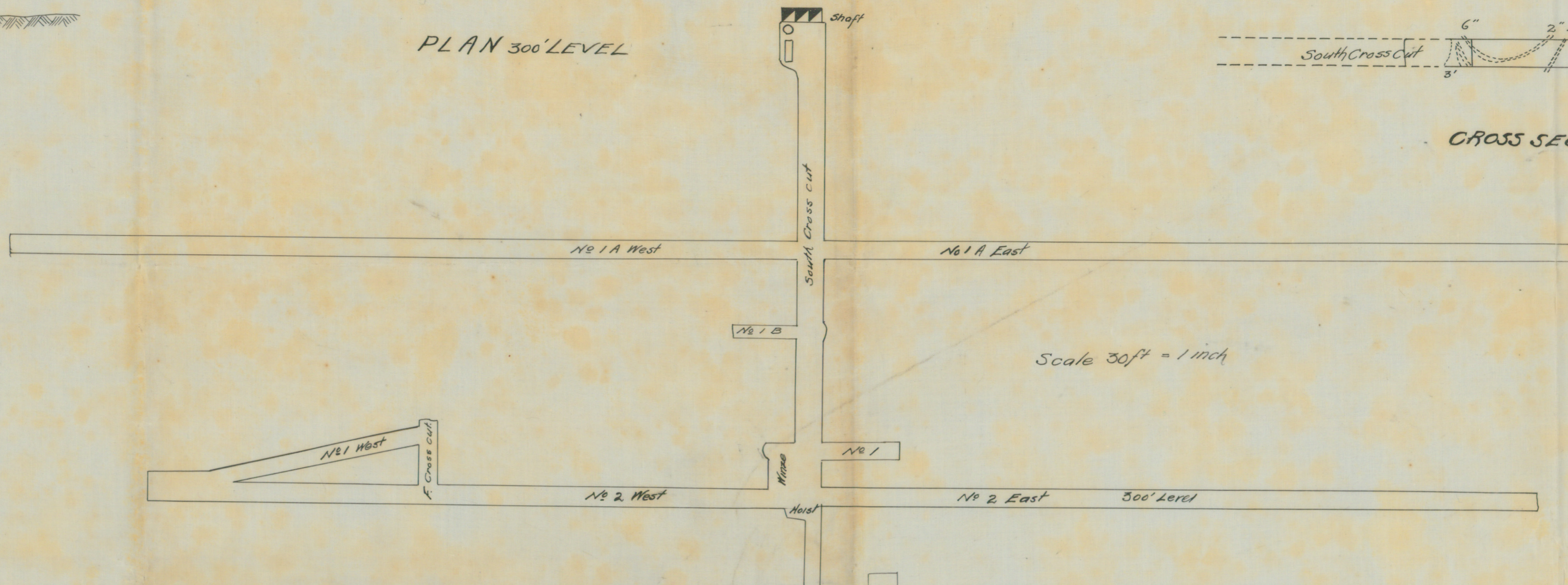
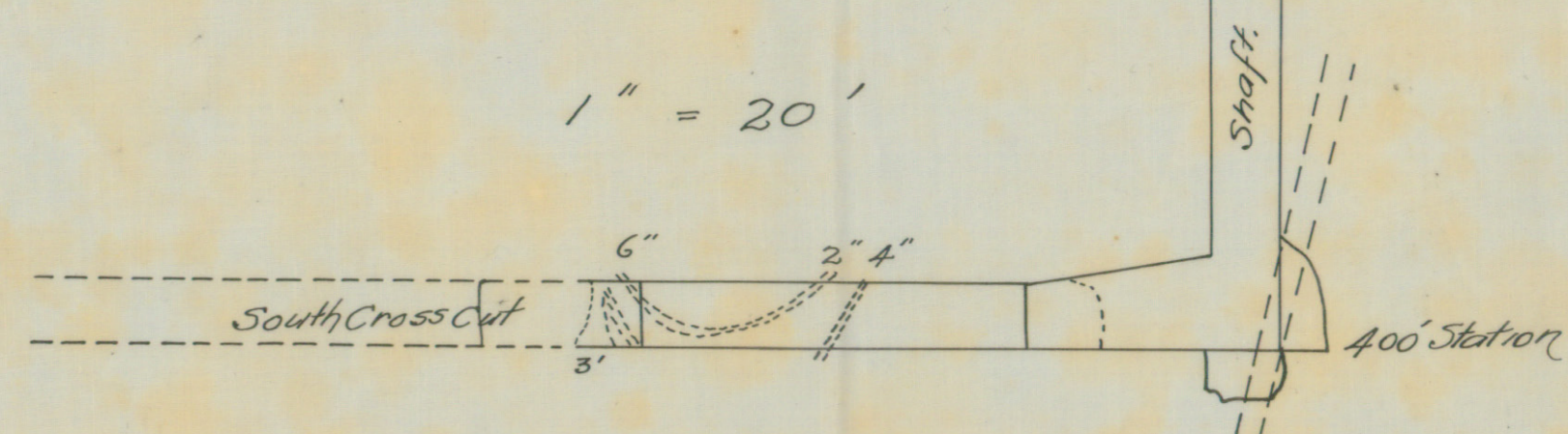


COMPOSITE SECTION
 through C.H. Old Plan
 and
 North and South Line through Vertical Shaft
 showing
 Work Projected below 300 feet Level
 Scale 30ft = 1 inch

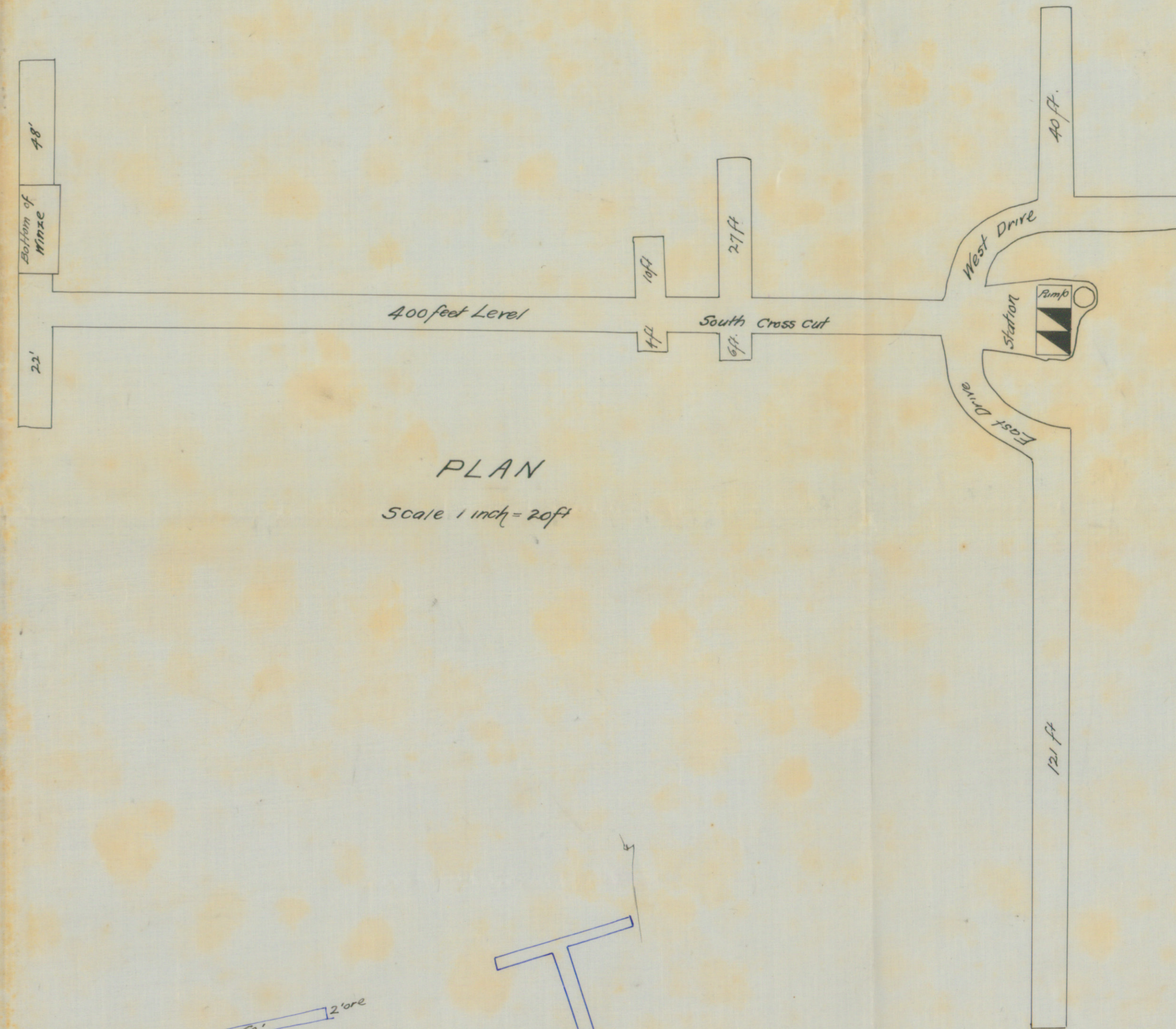
PLAN 300' LEVEL



1" = 20'



CROSS SECTION



PLAN
 Scale 1 inch = 20ft



DUFFERIN GOLD MINES
 NOVA SCOTIA
 PLAN OF UNDERGROUND WORKS
 Scale 40 feet = 1 inch.

Traced from plans
 loaned by
 E.R. Fairbairn.
 OFM 10006