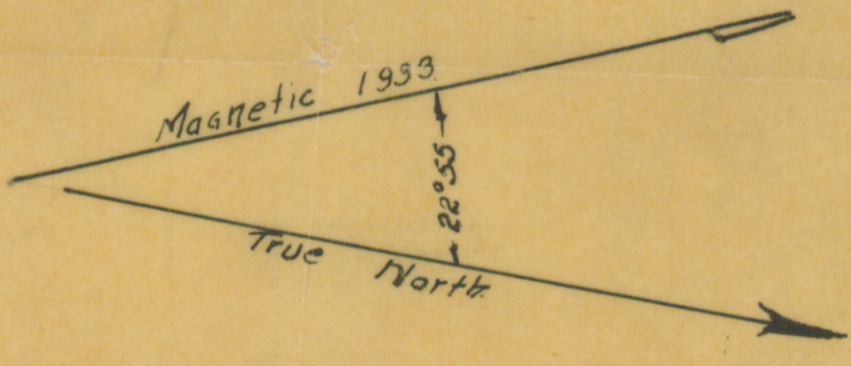




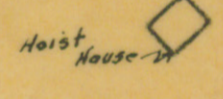
PITS ON VERMILLION VEIN



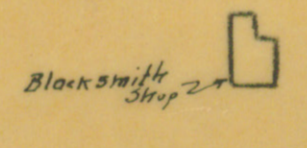
BAKER SHAFT size 6x11
Elev at top 1045

PICAYUNE 27
Elev at top 140

LINCOLN SHAFT size 7x13'
Dip 37° Direction S 29° 30' E



LACEY SHAFT size 13x8
Elev at top 1130



PROSPECTING PIT
Elev at top 99

LACY FISHER VEIN SECTION

GOLD RIVER NOVA SCOTIA

Scale: 1" = 100'

Nov. 22 1933

Charles J. Roper