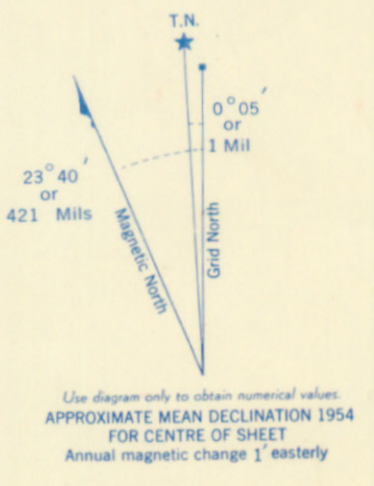




CANADA
DEPARTMENT OF
MINES AND TECHNICAL SURVEYS
SURVEYS AND MAPPING BRANCH

REFERENCE

- Roads: loose surface, all weather: 2 lines or more, less than 2 lines
- loose surface, dry weather: 2 lines, less than 2 lines
- Trail or Portage: 2 lines, less than 2 lines
- Railways: standard gauge, multiple track: 4 lines, less than 4 lines
- standard gauge, single track: 2 lines, less than 2 lines
- Bridges: road, railway: 2 lines, less than 2 lines
- Boundaries: County or District: 2 lines, less than 2 lines
- Reservation; Indian, Park, etc: 2 lines, less than 2 lines
- Power Transmission Line: 2 lines, less than 2 lines
- Horizontal Control Point: 2 lines, less than 2 lines
- Boundary Mon: 2 lines, less than 2 lines
- Bench Mark: 2 lines, less than 2 lines
- Spot Elevation, (in feet): 2 lines, less than 2 lines
- Building, Barn: 2 lines, less than 2 lines
- Church; Cemetery: 2 lines, less than 2 lines
- School; Post Office: 2 lines, less than 2 lines
- Mine or Open Cut: 2 lines, less than 2 lines
- Quarry: 2 lines, less than 2 lines
- Sand or Gravel Pit: 2 lines, less than 2 lines
- Lake, intermittent or Pond: 2 lines, less than 2 lines
- Lake or Shoreline, indefinite: 2 lines, less than 2 lines
- Stream, intermittent or dry: 2 lines, less than 2 lines
- Stream, indefinite: 2 lines, less than 2 lines
- Irrigation Canal or Ditch: 2 lines, less than 2 lines
- Marsh or Swamp: 2 lines, less than 2 lines
- Inundated Land: 2 lines, less than 2 lines
- Falls, Rapids: 2 lines, less than 2 lines
- Foreshore Flats: 2 lines, less than 2 lines
- Bluff, Cliff or Escarpment: 2 lines, less than 2 lines
- Lighthouse: 2 lines, less than 2 lines
- Wharf or Pier; Ferry: 2 lines, less than 2 lines
- Breakwater: 2 lines, less than 2 lines
- Reef, Rock or Small Island: 2 lines, less than 2 lines
- Contours: elevation: 2 lines, less than 2 lines
- depression: 2 lines, less than 2 lines
- Wooded Area: 2 lines, less than 2 lines



TO GIVE GRID REFERENCE ON THIS SHEET
FIGURES, IGNORE THE SMALLER FIGURES PRINTED AROUND THE MARGIN OF THE MAP. THESE ARE FOR FINDING THE FULL CO-ORDINATES.
USE ONLY THE LARGER FIGURES PRINTED IN THE MARGIN OR ON THE FACE OF THE MAP. (See 5.01.)

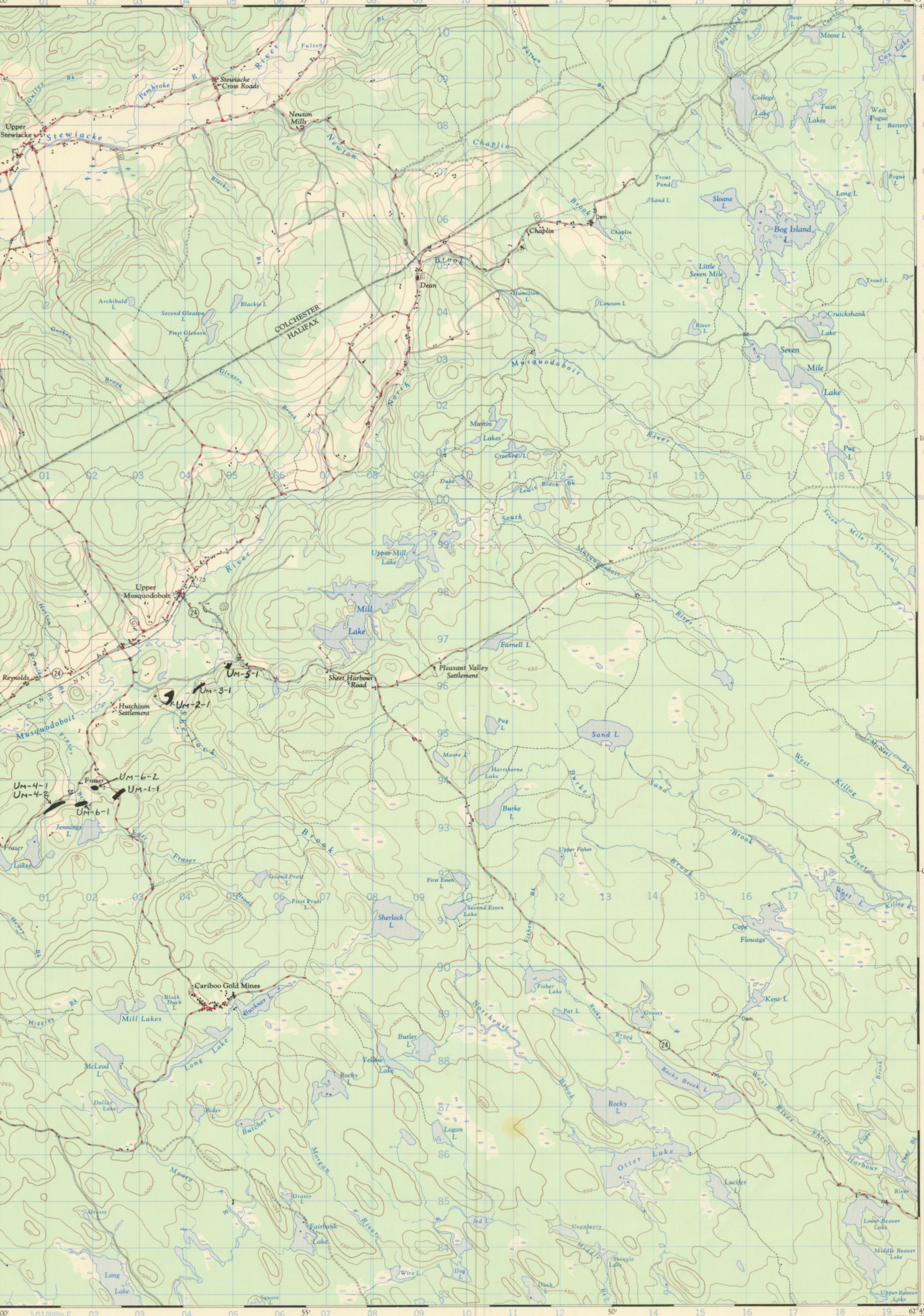
POINT		SCHOOL	
FOR STANDARD MILITARY GRID REFERENCE		FOR STANDARD MILITARY GRID REFERENCE	
East	North	East	North
Take West edge of square in which point lies, and read the figure printed opposite this line on North or South margin or on the line itself on the face of the map. (Estimate tenth Eastward.)	Take South edge of square in which point lies, and read the figure printed opposite this line on East or West margin or on the line itself on the face of the map. (Estimate tenth Northward.)	093	964
STANDARD MILITARY GRID REFERENCE 09 39 64 (To nearest 100 Metres)		STANDARD MILITARY GRID REFERENCE 09 39 64 (To nearest 100 Metres)	
Nearest similar grid reference: 100,000 Metres (Approximately 63 Miles)			

ONE THOUSAND METRE
UNIVERSAL TRANSVERSE MERCATOR GRID
ZONE 20

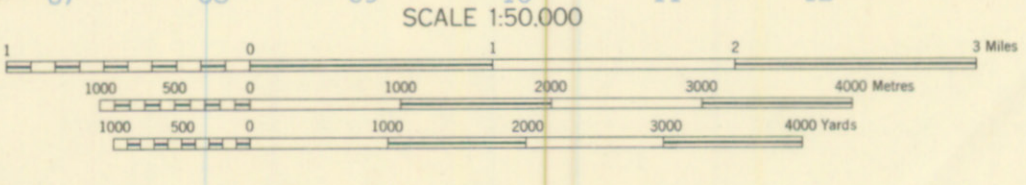
INDEX TO ADJOINING SHEETS

TRURO	HOPEWELL	LOCHABER
SHUBENACADE	UPPER MUSQUODOBOIT	LISCOMB
MUSQUODOBOIT	TANGIER	ECUM SECUM

UPPER
MUSQUODOBOIT
NOVA SCOTIA
11 1/2 WEST HALF
SECOND EDITION



Produced by the Surveys and Mapping Branch,
Department of Mines and Technical Surveys, 1954
from air photographs taken in 1948.
Printed by the Army Survey Establishment, R.C.E.,
Department of National Defence, 1954.
Copies may be obtained from the Map Distribution
Office, Department of Mines and Technical Surveys,
Ottawa.



CONTOUR INTERVAL 50 FEET
North American Datum
All Elevations in Feet above Mean Sea Level
CONVERSION SCALE FOR ELEVATIONS