

Refer to this map as: 11E/4E EDITION 2 ASE SERIES A 791

OFM 70005

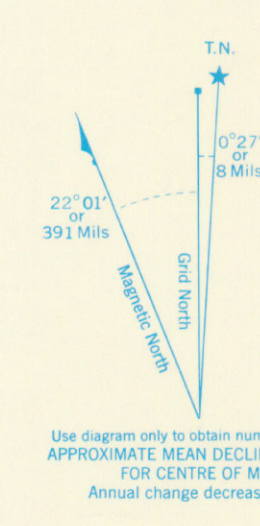
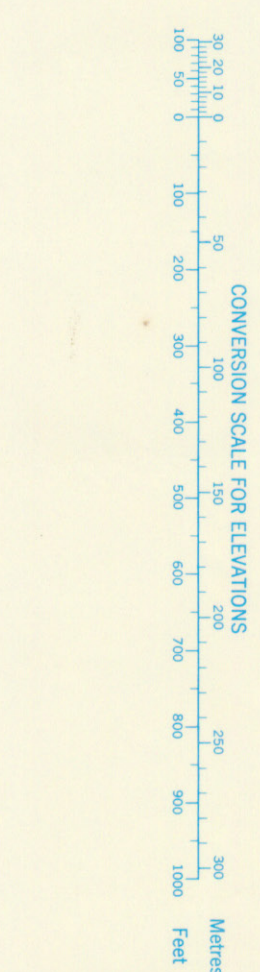
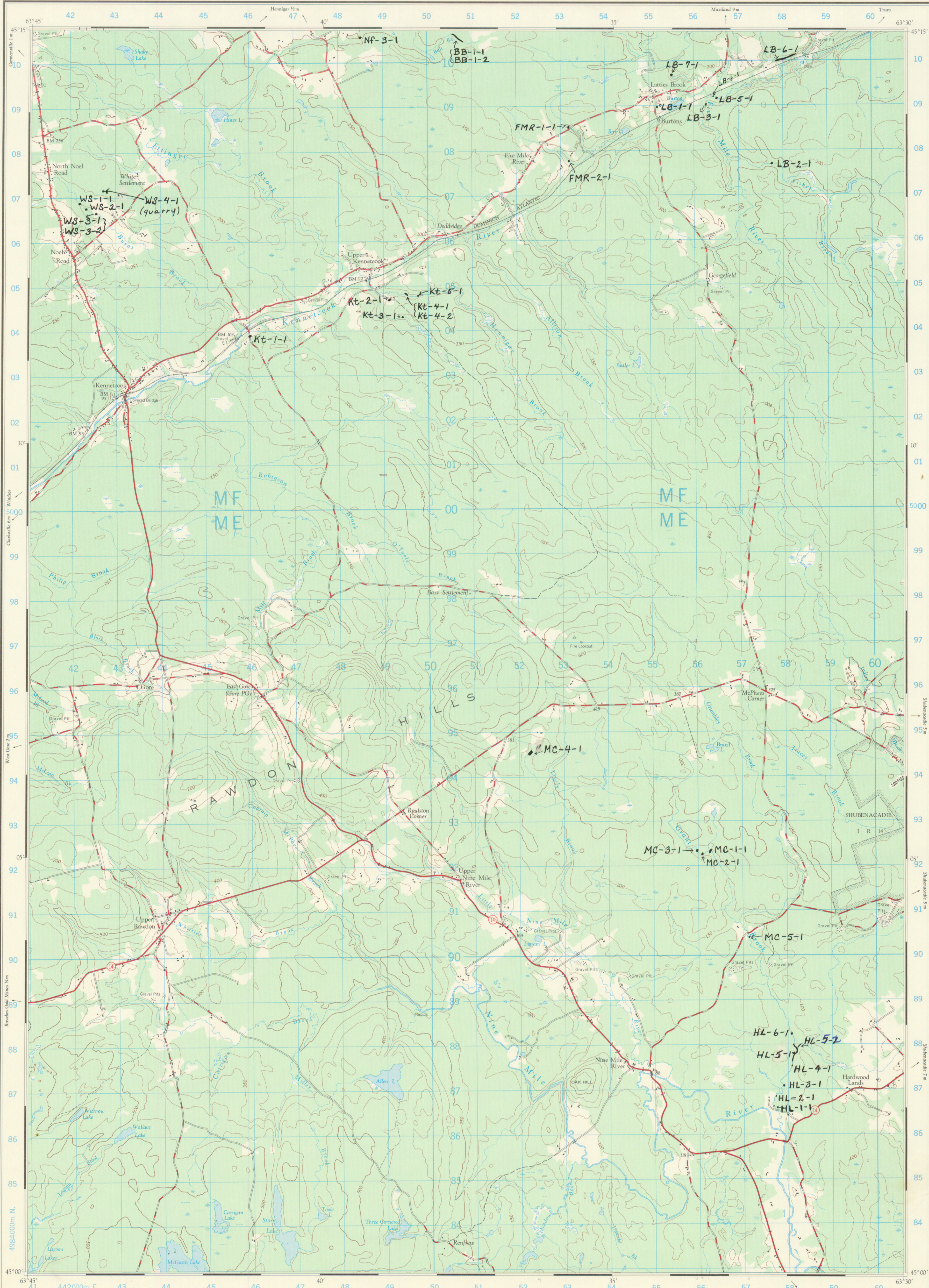


Table with grid zone designation (20T) and 100,000 M. square identification (MF ME 50). Includes an example for 'FIRE LOOKOUT' with Easting and Northing coordinates.

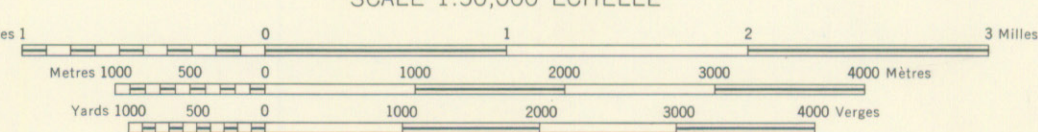
ONE THOUSAND METRE UNIVERSAL TRANSVERSE MERCATOR GRID ZONE 20

Compiled, 1964, by the SURVEYS AND MAPPING BRANCH, DEPARTMENT OF MINES AND TECHNICAL SURVEYS, from aerial photographs taken in 1959. Field surveys 1958-60. Culture check 1964. Printed 1966.

Copies may be obtained from the Map Distribution Office, Department of Mines and Technical Surveys, Ottawa.

KENNETCOOK HANTS COUNTY NOVA SCOTIA

SCALE 1:50,000 ÉCHELLE



CONTOUR INTERVAL 50 FEET Élévations in Feet above Mean Sea Level North American Datum 1927 Transverse Mercator Projection

ÉQUIDISTANCE DES COURBES 50 PIEDS Élévations en pieds au-dessus du niveau moyen de la mer Réseau géodésique nord-américain unifié (1927) Projection transverse de Mercator

- List of symbols for roads, buildings, schools, churches, mines, etc., with their corresponding map representations.

- List of symbols for buildings, schools, churches, mines, etc., with their corresponding map representations.

Rédigé en 1964, par la DIRECTION DES LEVÉS ET DE LA CARTOGRAPHIE, MINISTÈRE DES MINES ET DES RELEVÉS TECHNIQUES, d'après des photographies aériennes prises en 1959. Levés sur le terrain en 1958-60. Vérification des ouvrages en 1964. Imprimé en 1966.

Ces cartes sont en vente au Bureau de distribution des cartes, ministère des Mines et des Relevés techniques, Ottawa.

TABLEAU D'ASSEMBLAGE DU SYSTÈME NATIONAL DE RÉFÉRENCE CARTOGRAPHIQUE

Grid assembly table showing coordinates for adjacent sheets: 11E/5W, 11E/5E, 11E/6W, 11E/4W, 11E/4E, 11E/3W, 11D/13W, 11D/13E, 11D/14W.

INDEX TO ADJOINING SHEETS OF THE NATIONAL TOPOGRAPHIC SYSTEM