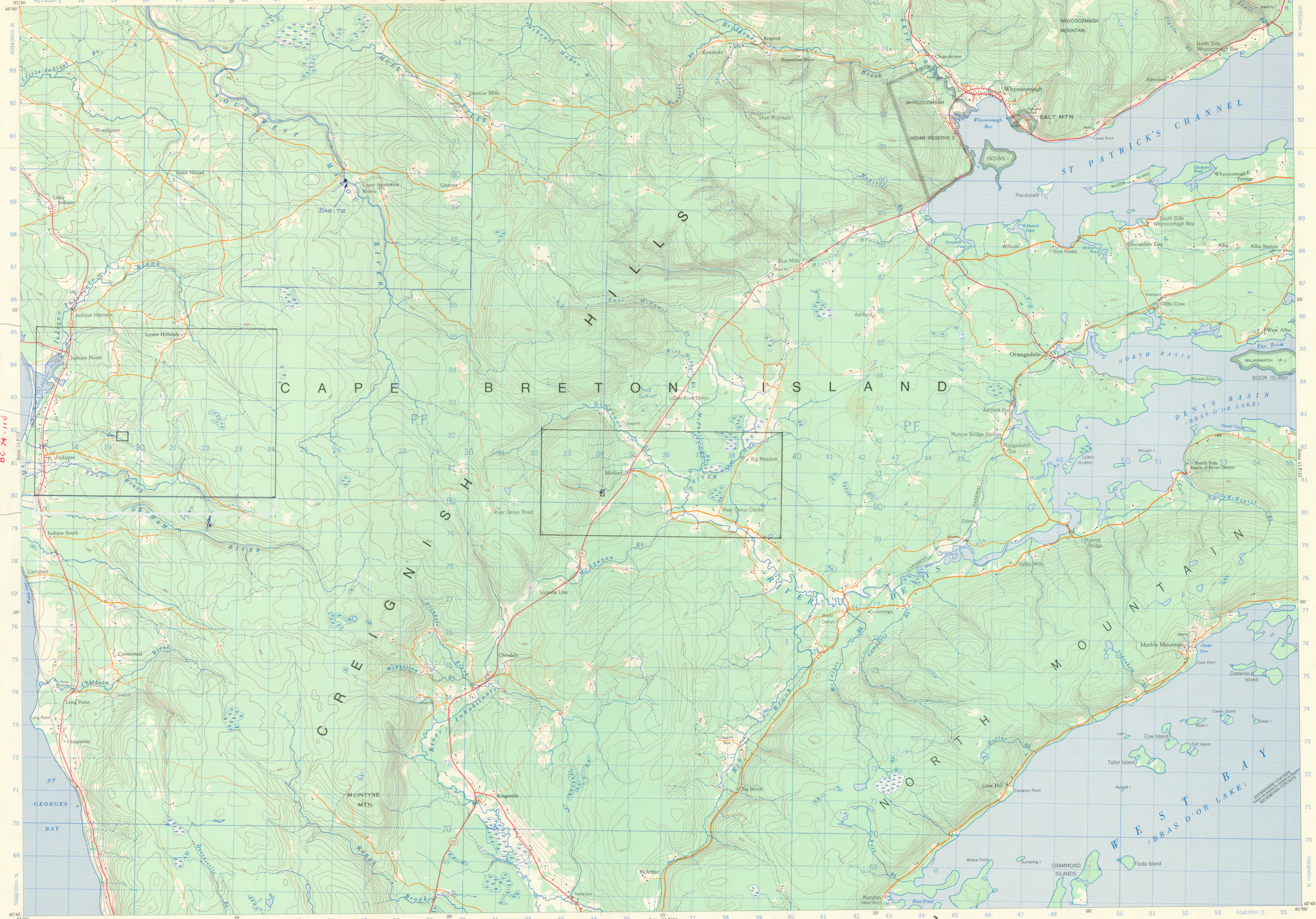
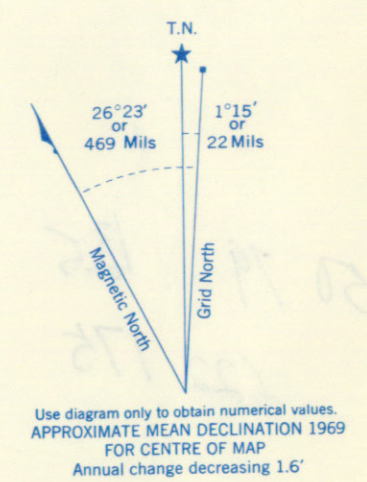
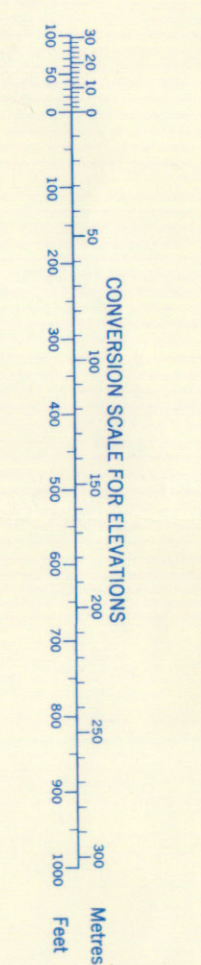


Refer to this map as: 11 F/14 EDITION 2 MCE SERIES A 791



GR. # 3406 8031  
Melford Sample No. DC-74-128  
F14-5000  
F14-5001



ONE THOUSAND METRE  
UNIVERSAL TRANSVERSE MERCATOR GRID  
ZONE 20

Table with 2 columns: GRID ZONE DESIGNATION (20T) and 100,000 M. SQUARE IDENTIFICATION (PF).

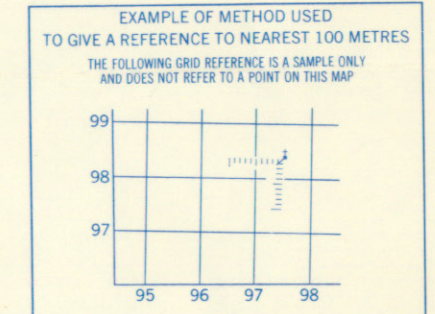


Table with 2 columns: REFERENCE POINT (CHURCH) and coordinates (97, 97, 97, 97).

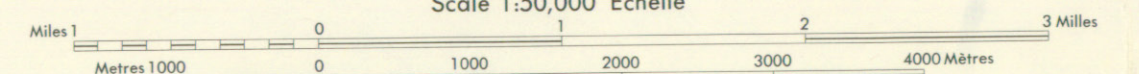
EXAMPLE MILITARY GRID REFERENCE: 975084

Produced, 1969, by the SURVEYS AND MAPPING BRANCH, DEPARTMENT OF ENERGY, MINES AND RESOURCES...

Legend table for roads, routes, and terrain features.

WHYCOMOMAGH  
NOVA SCOTIA

Scale 1:50,000 Échelle



This Provisional Map is equivalent to a standard map in accuracy of content.

Cette carte provisoire équivaut à une carte régulière au point de vue précision de l'information.

Établi en 1969, par la DIRECTION DES LEVÉS ET DE LA CARTOGRAPHIE, MINISTÈRE DE L'ÉNERGIE, DES MINES ET DES RESSOURCES...