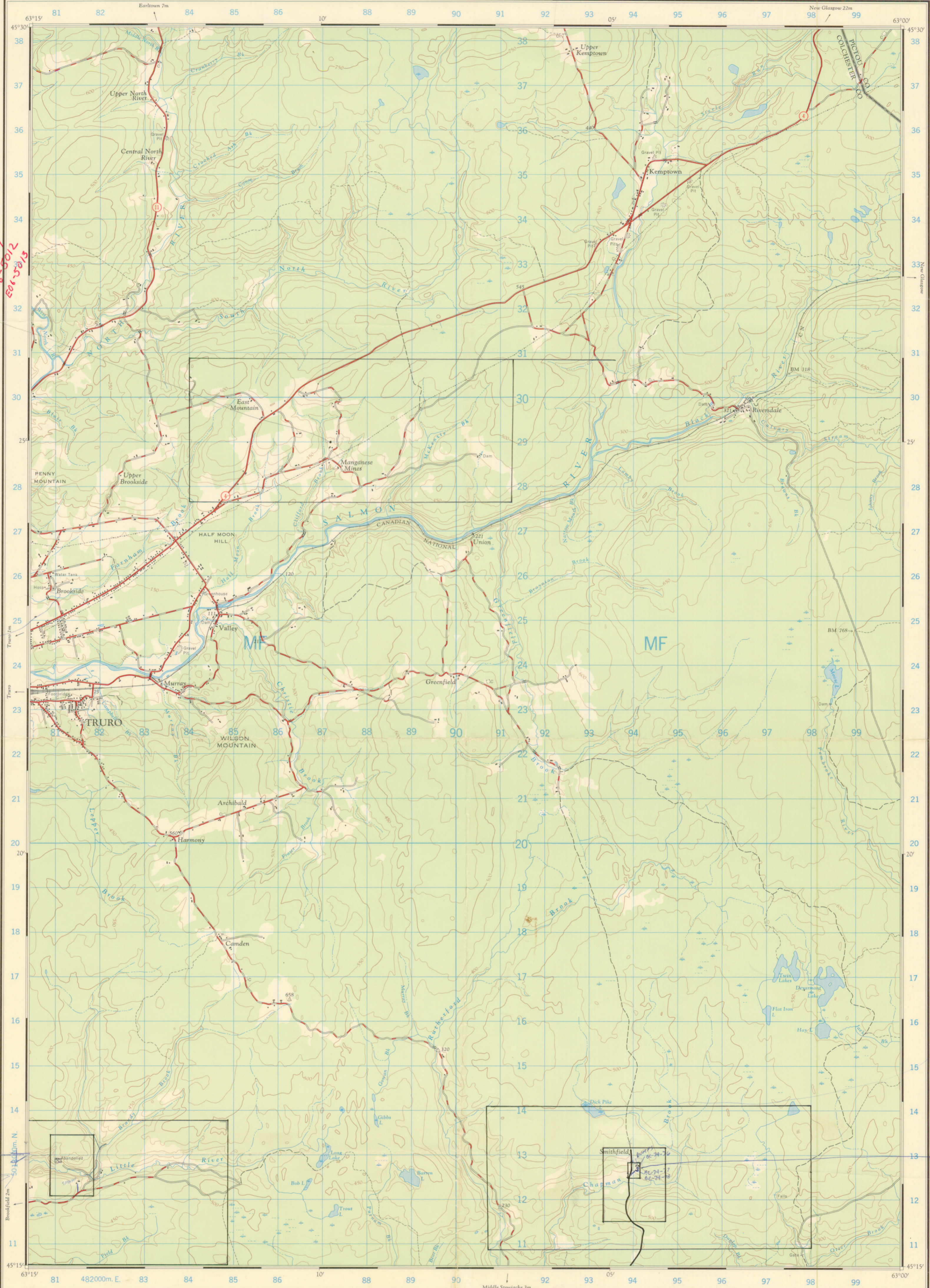


SMITHFIELD / OROUKTIOU
EAST Mtn. MINE

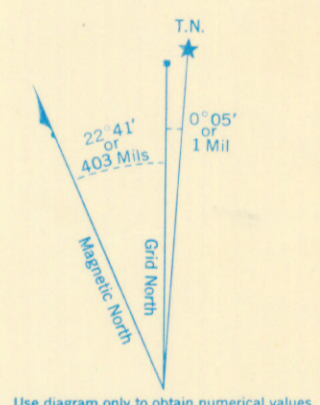
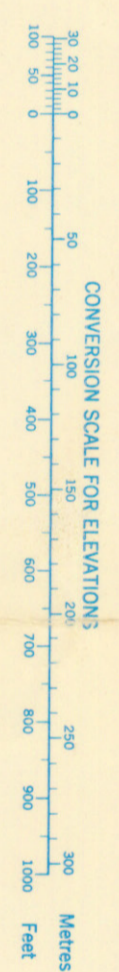
Refer to this map as: 11E/6E EDITION 3 ASE SERIES A 791



Sample No. DC-74-57 EOG-5002 EOG-5015

1000-179170

EOG-5003
EOG-5004
EOG-5005
DC-74-64
DC-74-78
DC-74-71
DC-74-72



Use diagram only to obtain numerical values. APPROXIMATE MEAN DECLINATION 1965 FOR CENTRE OF MAP. Annual change decreasing 2.4\"/>

G.R.# 94801272

GRID ZONE DESIGNATION	100,000 M. SQUARE IDENTIFICATION
20 T	MF
TO GIVE A REFERENCE TO NEAREST 100 METRES	
EXAMPLE: CHURCH	
EASTING: Road number on grid line immediately to left of point	90
Estimate tenths of a square from this line toward to point	1
NORTHING: Road number on grid line immediately below point	23
Estimate tenths of a square from this line toward to point	8
MILITARY GRID REFERENCE	901238
Nearest similar grid reference 100,000 metres (about 63 miles)	

ONE THOUSAND METRE UNIVERSAL TRANSVERSE MERCATOR GRID ZONE 20

EOG-5000
EOG-5001
EOG-5002

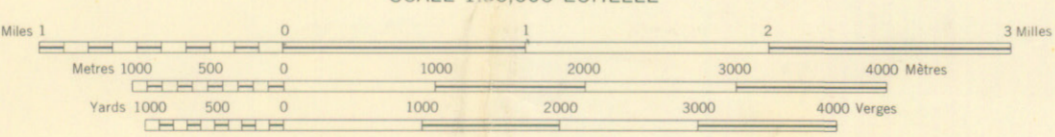
Compiled, 1964, by the SURVEYS AND MAPPING BRANCH, DEPARTMENT OF ENERGY, MINES AND RESOURCES, from aerial photographs taken in 1959. Field surveys 1934-45. Culture check 1964. Printed 1967.

Copies may be obtained from the Map Distribution Office, Department of Energy, Mines and Resources, Ottawa.

1284 8108

TRURO NOVA SCOTIA

SCALE 1:50,000 ÉCHELLE



CONTOUR INTERVAL 50 FEET
Elevations in Feet above Mean Sea Level
North American Datum 1927
Transverse Mercator Projection

ÉQUIDISTANCE DES COURBES 50 PIÈDS
Élévations en pieds au-dessus du niveau moyen de la mer
Niveau de référence nord américain 1927
Projection transverse de Mercator

Building	Édifice	Barn	Grange
School	École	Post office	Bureau de poste
Church	Église	Cemetery	Cimetière
Mine or Open cut	Mine ou fosse à ciel ouvert		
Lighthouse	Phare		
Power transmission line	Ligne de transport d'énergie		
River with bridge	Rivière avec pont		
Stream, intermittent or dry	Cours d'eau intermittent ou à sec		
Lake, intermittent, infilled	Lac intermittent, infoncé		
Marsh or Swamp	Marais ou marécage		
Depression contours	Courbes de cuvette		

Rédigé en 1964, par la DIRECTION DES LEVÉS ET DE LA CARTOGRAPHIE, MINISTÈRE DE L'ÉNERGIE, DES MINES ET DES RESSOURCES, à partir des photographies aériennes prises en 1959. Levés sur le terrain en 1934-45. Vérifica-

tion des ouvrages en 1964. Imprimé en 1967.

Ces cartes sont en vente au Bureau de distribution des cartes, ministère de l'Énergie, des Mines et des Ressources, Ottawa.

TABLEAU D'ASSEMBLAGE DU SYSTÈME NATIONAL DE RÉFÉRENCE CARTOGRAPHIQUE

11E/1W	11E/1E	11E/1W
11E/6W	11E/6E	11E/6W
TRURO		
11E/5W	11E/5E	11E/5W

INDEX TO ADJOINING SHEETS OF THE NATIONAL TOPOGRAPHIC SYSTEM

Smithfield