

Springville
N-5035515
E-52915

Sample N95

BC-74-106 BC-74-109
BC-74-107 plate nos
BC-74-108
BC-74-80 BC-74-84 BC-74-88
BC-74-81 BC-74-85 BC-74-89
BC-74-82 BC-74-86 BC-74-90
BC-74-83 BC-74-87

Refer to this Map as: 11 E/7 East Half
EDITION 2 ASE
SERIES A791



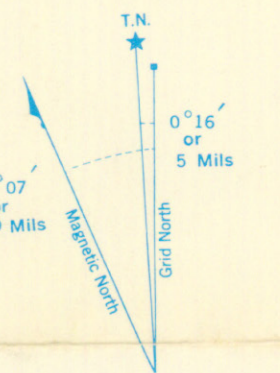
CANADA

DEPARTMENT OF
MINES AND TECHNICAL SURVEYS
SURVEYS AND MAPPING BRANCH

REFERENCE

- Roads:
 - hard surface, all weather: more than 2 lanes, 2 lanes, less than 2 lanes
 - hard surface, all weather: less than 2 lanes, 2 lanes or more, less than 2 lanes
 - loose surface, all weather: 2 lanes or more, less than 2 lanes
 - loose surface, dry weather
- Cart Track, Snow or Winter Road
- Trail or Portage
- Railways:
 - standard gauge, multiple track
 - standard gauge, single track
 - abandoned
 - narrow gauge, single track
- Cutting, embankment
- Bridges:
 - road; railway
 - overpass; underpass
- Boundaries:
 - International
 - Province or State
 - County or District
 - Township or Parish
 - Reservation: Indian, Park, etc.
- Power Transmission Line
- Telephone Line
- Horizontal control point
- Boundary Mon.
- Bench Mark
- Spot Elevation, (in feet)
- Building, Barn
- Church; Cemetery
- School; Post Office
- Mine or Open Cut
- Quarry
- Sand or Gravel Pit
- Lake, intermittent or pond
- Lake or Shoreline, indefinite
- Stream, intermittent or dry
- Stream, indefinite
- Irrigation Canal or Ditch
- Marsh or Swamp
- Inundated Land
- Falls; Rapids
- Foreshore Flats
- Bluff, Cliff or Escarpment
- Lighthouse
- Wharf or Pier; Ferry
- Breakwater
- Reef; Rock or Small Island
- Contours:
 - elevation
 - depression
 - approximate
 - Forest

Glencoe Brook
N-5029760
E-534190
Sample N95:
BC-74-133



TO GIVE GRID REFERENCE ON THIS SHEET FIGURES, IGNORE THE SMALLER FIGURES PRINTED AROUND THE MARGIN OF THE MAP. THESE ARE FOR FINDING THE FULL CO-ORDINATES. USE ONLY THE LARGER FIGURES PRINTED IN THE MARGIN OR ON THE FACE OF THE MAP. Viz. 5 21

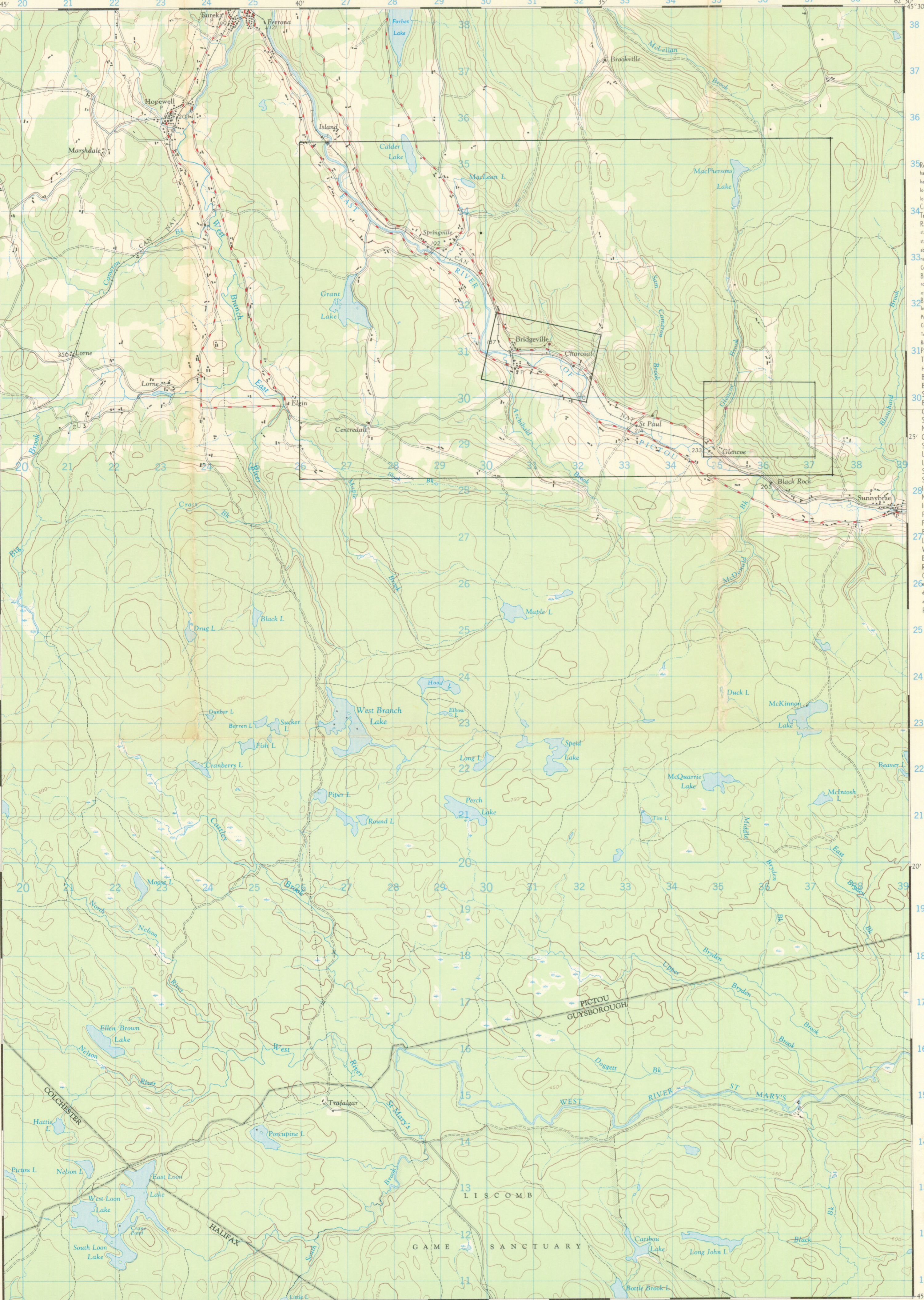
POINT		CHURCH	
East	North	East	North
Take West edge of square in which point lies, and read the figure printed opposite this line on North or South margin or on the line itself on the face of the map. Estimate tenths Eastward.	Take South edge of square in which point lies, and read the figure printed opposite this line on East or West margin or on the line itself on the face of the map. Estimate tenths Northward.	33 7 337	29 6 296
STANDARD MILITARY GRID REFERENCE: 337296 (To nearest 100 Metres)			
Nearest similar grid reference: 100,000 Metres (Approximately 63 Miles)			

ONE THOUSAND METRE UNIVERSAL TRANSVERSE MERCATOR GRID ZONE 20

45° 30'	11 E/11	11 E/10	62° 00'
TATAMAGOUCHÉ RIVER JOHN	NEW GLASGOW	MERIGOMISH	
TRURO	HOPEWELL	LOCHABER	
SHUBENACADIE	UPPER MUSQUODOBOIT	LISCOMB	
45° 00'			62° 00'

INDEX TO ADJOINING SHEETS

HOPEWELL
NOVA SCOTIA
11 E/7 EAST HALF
SECOND EDITION



Produced by the Surveys and Mapping Branch, Department of Mines and Technical Surveys, 1954, from air photographs taken in 1948. Printed by the Army Survey Establishment, R.C.E., Department of National Defence, 1954. Copies may be obtained from the Map Distribution Office, Department of Mines and Technical Surveys, Ottawa.

