

KNOWDART
BROOK

5867 6275
SAMPLE # E09-5004
THIN SECTION # E09 5004
PLATE NO

BIG MARSH

Refer to this map as: 11E/9E EDITION 1 MCE SERIES A 791

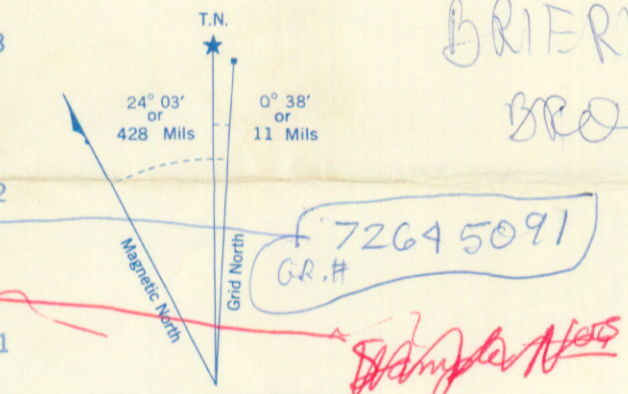
Sample # BC-74-98
E09-5002
E09-5003



CANADA
DEPARTMENT OF MINES AND TECHNICAL SURVEYS
SURVEYS AND MAPPING BRANCH

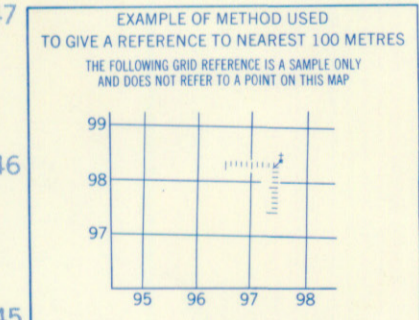
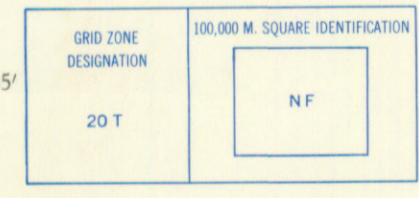
REFERENCE

- Roads:
 - hard surface, heavy duty: 3 or more lanes, Part completed
 - hard surface, heavy duty: 2 lanes, Route No.
 - hard surface, medium duty: 3 or more lanes, 2 lanes
 - hose surface, graded and drained: 3 or more lanes, Not less than 14 ft. wide
 - Other Roads: 3 or more lanes, Poor condition
- Trail or Portage: 14 ft. wide
- Railways:
 - double track: Station
 - single track: Stop, Siding
 - abandoned: Stop, Siding
 - narrow gauge or electric: Stop, Siding
- Bridges:
 - road: railway
 - overpass; underpass
- Boundaries:
 - International
 - Province or State
 - County or Parish
 - Township or Parish
 - Reservation, Park, etc.
 - Surveyed Line
- Electric Power Line: on Steel Towers, on Wood Poles
- Telephone Line, trunk route
- Triangulation Station, Survey Mon.
- Boundary Mon., Survey Mon.
- Bench Mark
- Spot Elevation, (in feet): 782
- Building: Barn
- Mill or Factory, small, Sawmill, etc.
- Church; Cemetery
- School; Post Office
- Mine or Open Cut
- Quarry
- Sand or Gravel Pit
- Lake, intermittent or Pond
- Lake or Shoreline, indefinite
- Stream, intermittent or dry
- Stream, indefinite
- Irrigation Canal or Ditch
- Marsh or Swamp
- Inundated Land
- Falls; Rapids
- Foreshore Flats
- Bluff, Cliff or Escarpment
- Lighthouse
- Wharf or Pier; Ferry
- Contours:
 - elevation
 - depression
 - approximate
 - Wooded Area



Sample # BC-74-102
BC-74-103
E09-5006
E09-5001

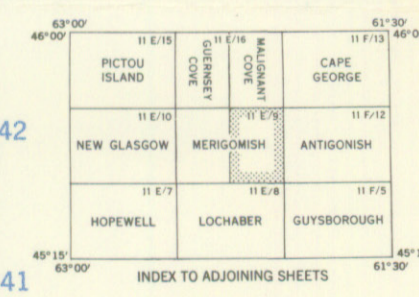
ONE THOUSAND METRE
UNIVERSAL TRANSVERSE MERCATOR GRID
ZONE 20



REFERENCE POINT CHURCH (as above)

EASTING: Read number on grid line immediately to left of point	97
Estimate tenths of a square from this line eastward to point	5
NORTHING: Read number on grid line immediately below point	98
Estimate tenths of a square from this line northward to point	4
EXAMPLE MILITARY GRID REFERENCE	975984

Nearest similar grid reference 100,000 metres (about 63 miles)



MERIGOMISH
NOVA SCOTIA
11 E/9 EAST HALF
FIRST EDITION



Sample BC-74-104

58676275

BRIERLY
BROOK

7264 5091
G.R.H.

Sample # BC-74-102

BC-74-103
E09-5006
E09-5001

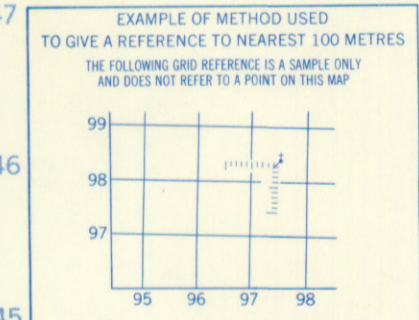
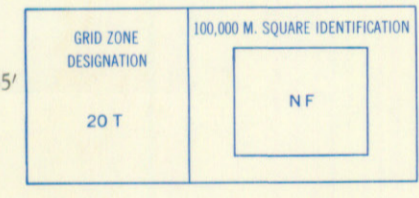
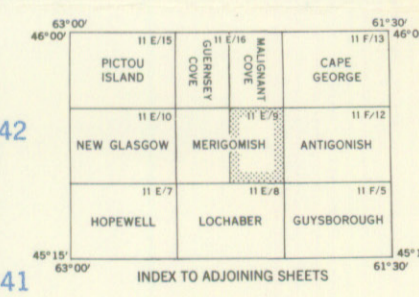


Table with grid reference information for 'CHURCH'.



MERIGOMISH NOVA SCOTIA 11 E/9 EAST HALF FIRST EDITION