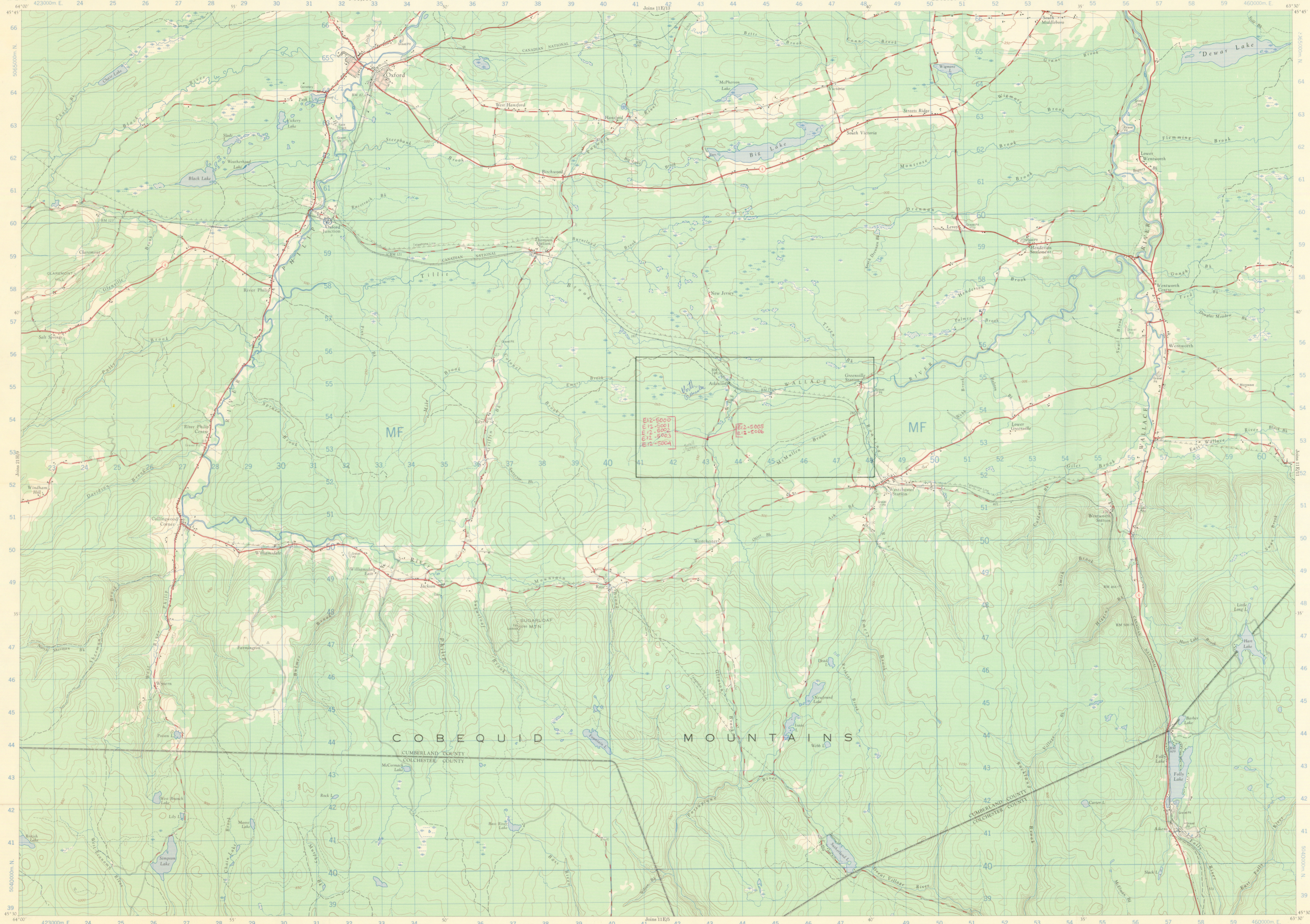


NORTH GREENVILLE

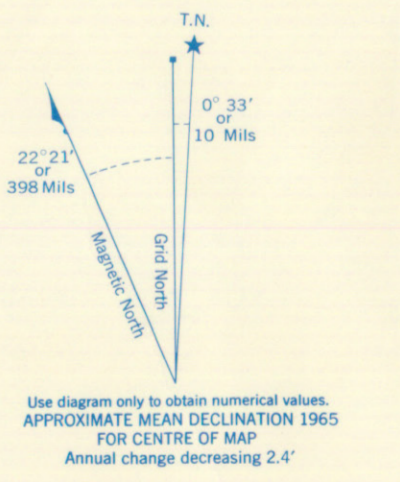
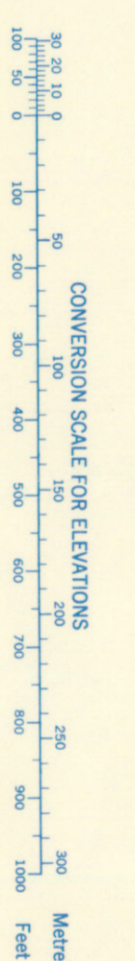


Refer to this map as: 11 E/12 EDITION 2 ASE SERIES A 751

North Greenville

E12-5000  
E12-5001  
E12-5002  
E12-5003  
E12-5004

E12-5005  
E12-5006



Use diagram only to obtain numerical values. APPROXIMATE MEAN DECLINATION 1965 FOR CENTRE OF MAP. Annual change decreasing 2.4'

GRID ZONE DESIGNATION	10-DIGIT SQUARE IDENTIFICATION
20T	MF

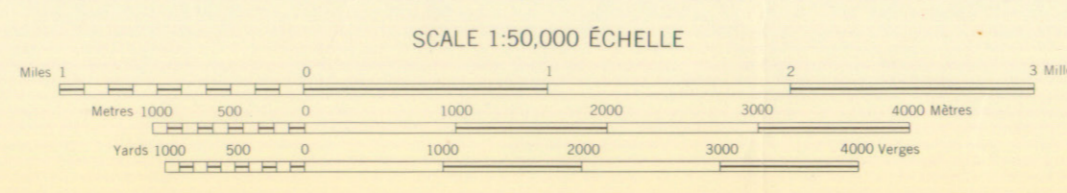
  

TO OBTAIN A REFERENCE TO NEAREST 100 METRES	
EXAMPLE:	HOUSE
READING: Read number on grid line immediately to left of point. Estimate tenth of a square from this line towards the point.	62.7
NORTHING: Read number on grid line immediately below point. Estimate tenth of a square from this line towards the point.	53.2
MILITARY GRID REFERENCE	532352
Nearest similar grid reference 100,000 metres (about 63 miles)	

ONE THOUSAND METRE UNIVERSAL TRANSVERSE MERCATOR GRID ZONE 20

Compiled, 1964, by the SURVEYS AND MAPPING BRANCH, DEPARTMENT OF ENERGY, MINES AND REVENUE, from aerial photographs taken in 1959. Field surveys, 1952 and 1962. Culture check 1964. Printed 1962.

Roads	Roads, both ways	Width (metres)	Width (feet)
hard surface, all weather	gravel, both ways	2.00	6.56
hard surface, all weather	gravel, both ways	3.00	9.84
loose or stabilized surface, all weather	gravel, aggregate, both ways	3.00	9.84
loose surface, dry weather	gravel, aggregate, both ways	3.00	9.84
soft track	gravel, aggregate, both ways	3.00	9.84
trail or portage	single or portage	3.00	9.84



OXFORD NOVA SCOTIA

CONTOUR INTERVAL, IN FEET  
Elevation in feet above Mean Sea Level  
North American Datum 1957  
Topographic Meridian Projection

EQUIDISTANCE DES COURBES DE PRESS  
Élévation en pieds au-dessus de niveau moyen de la mer  
Niveau de référence nord américain 1957  
Projection méridienne équidistante

Some names on this map are not official. Corrections or additions are invited by the Survey and Mapping Branch. This Provisional Map is prepared to a standard map accuracy of content.

Certaines noms inscrits sur cette carte ne sont pas officiels. Les corrections et les additions sont invitées par la Direction des levés et de la cartographie. Cette carte provisoire est l'équivalent d'une carte officielle au point de vue précision de l'information.

Modèle en 1964, par la DIRECTION DES LEVÉS ET DE LA CARTOGRAPHIE, MINISTÈRE DE L'ÉNERGIE, DES MINES ET DES RESSOURCES, à partir des photographies aériennes prises en 1959. Levés sur le terrain en 1952 et 1962. Vérification des courbes en 1964. Imprimé en 1962.

Ces cartes sont en vente au Bureau de distribution des cartes, Ministère de l'Énergie, des Mines et des Ressources, Ottawa.