

64°03'00"

63°58'00"

OFM 82-001

ELEVATION

# PEATLAND AREA

## H20

PROVINCE OF NOVA SCOTIA  
DEPARTMENT OF MINES AND ENERGY  
1982

Scale - 1:10,000

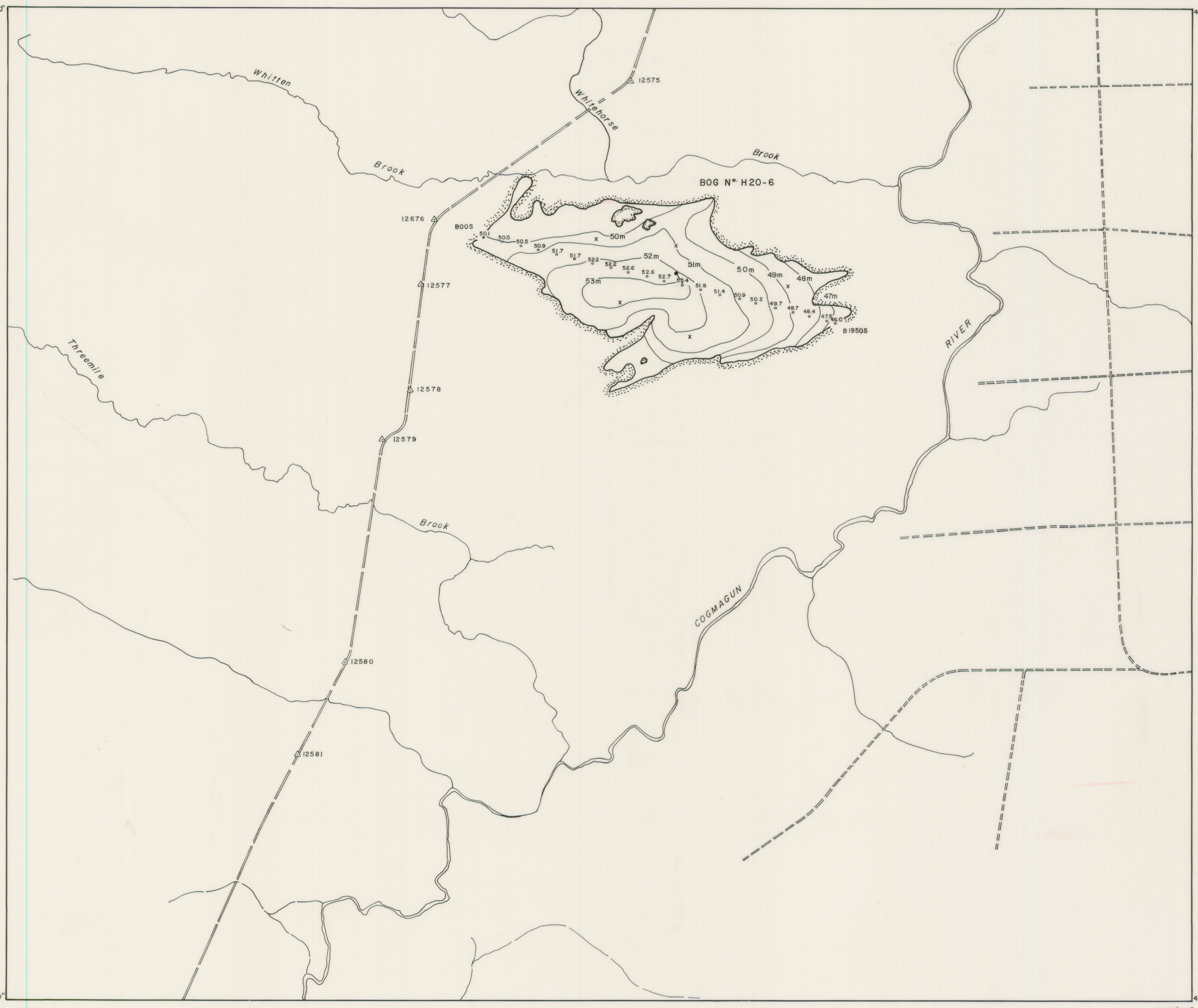
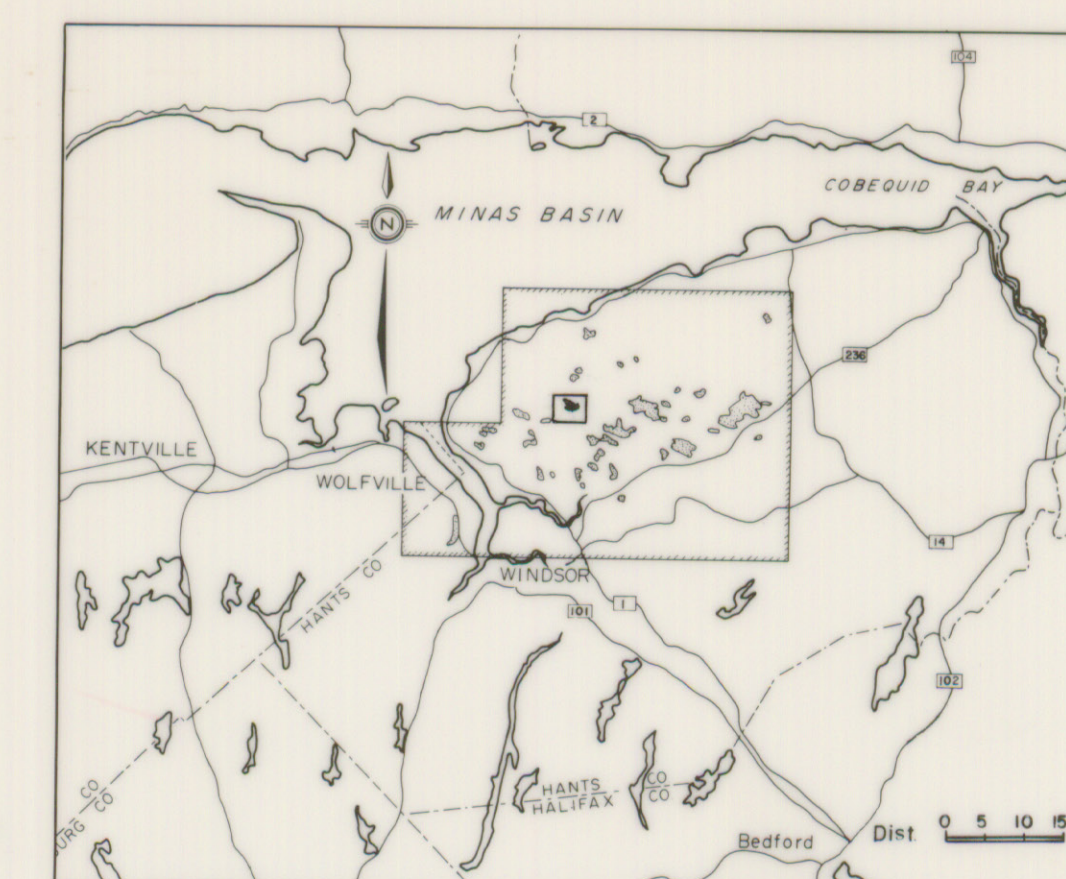
0 500 1000 metres

1 Metre Contour Interval

### LEGEND

- Limit of bog .....
- Drainage channel and flow direction...
- Pond or lake .....
- Survey line designation and length..... 800 N + 320 E
- Poor road or trail.....
- Sample location .....
- Survey site .....
- Elevation (metres above m.s.l.)..... 40.9

Bog	Total		≥ 1m deep	
	Area (ha)	Area (ha)	Volume (Million m <sup>3</sup> )	Volume H <sub>5-10</sub> (Million m <sup>3</sup> )
H20-6	119.0	88.0	3.89	1.20



64°03'00"

63°58'00"

45°07'00"

45°10'00"