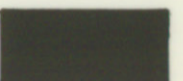
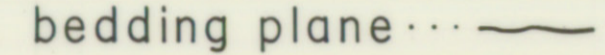
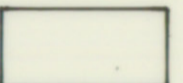
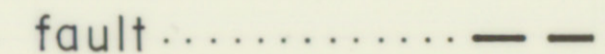

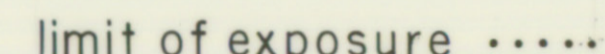
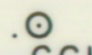
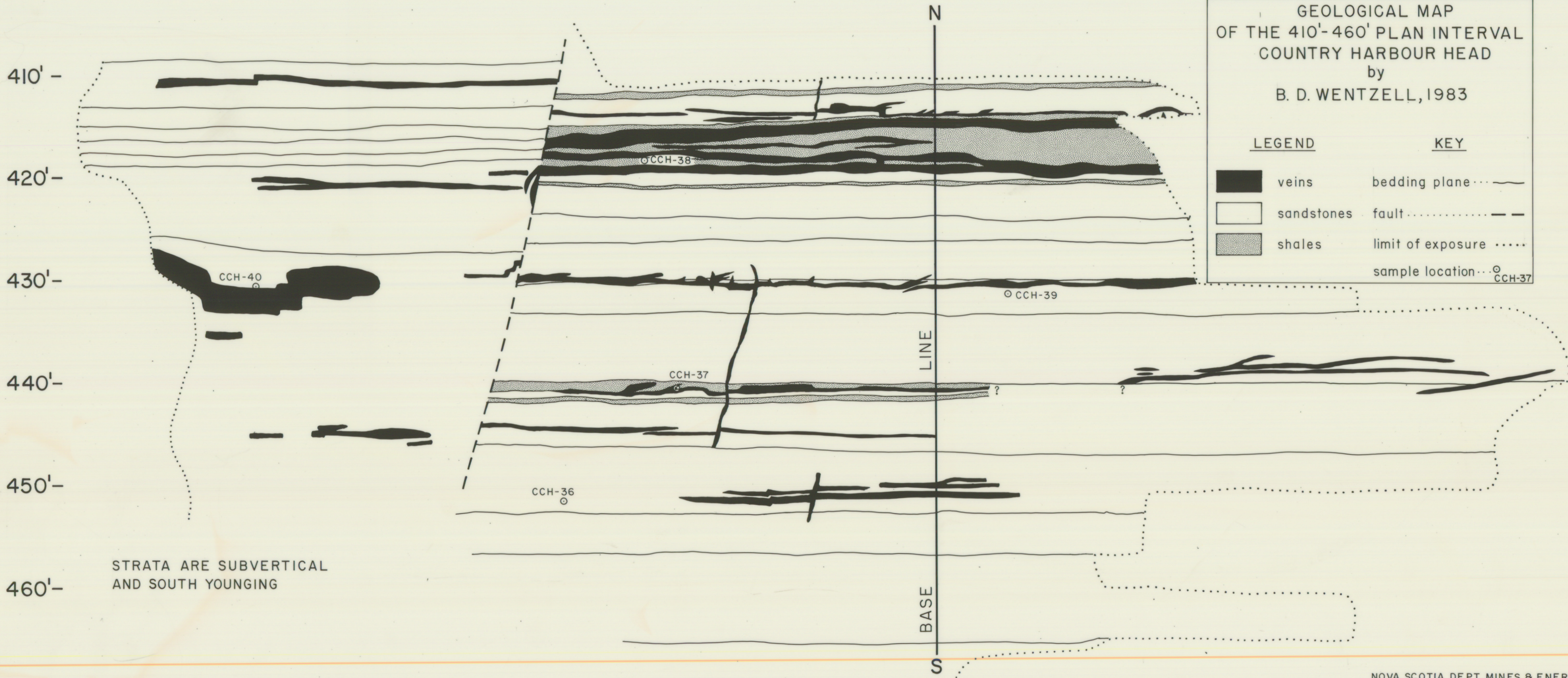


GEOLOGICAL MAP
 OF THE 410'-460' PLAN INTERVAL
 COUNTRY HARBOUR HEAD
 by
 B. D. WENTZELL, 1983

LEGEND		KEY	
	veins		bedding plane
	sandstones		fault
	shales		limit of exposure
			sample location



STRATA ARE SUBVERTICAL
 AND SOUTH YOUNGING