

**Cu**

**LEGEND**

Sample number ..... e.g. 82-1-025  
 year sequential number  
 location group

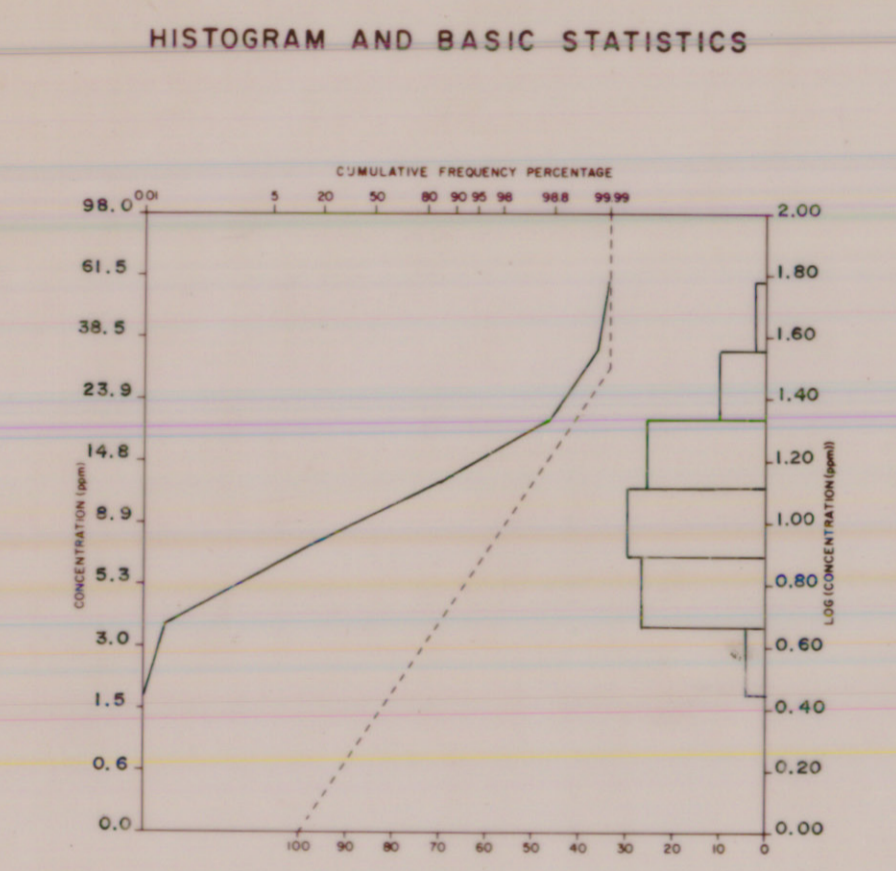
Analytical value in p.p.m. (unless otherwise specified)... e.g. 106

**Geochemical Sample Medium**

- Stream sediment, sieved
- Stream sediment, unsieved
- Lake sediment
- Heavy mineral / panned concentrate
- Soil
- Rock
- Peat
- Till
- Other

Note: Two (2) sample numbers per sample location indicates duplicate sample site... e.g. 82-1-025,026

N.R. = No Results



Note: Only data within this 1:50,000 sheet is included.

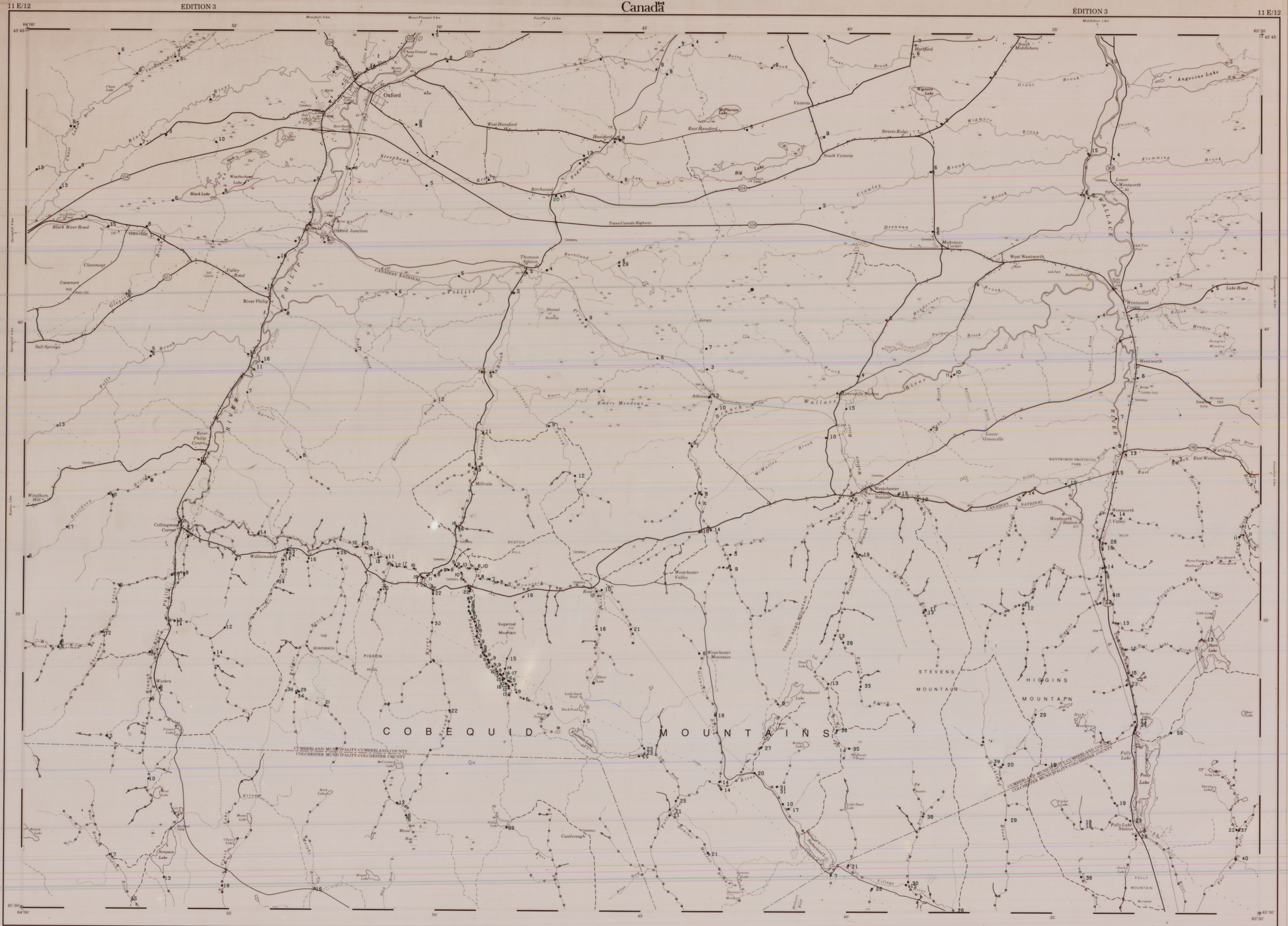
Average: 12.85  
 Number of samples: 334  
 Standard deviation: 0.53  
 Range: 1.00 - 99.00  
 Detection limit: 2 ppm

Sample collection and Geochemistry: P.J. Rogers and M.A. MacDonald  
 Analyses: Chemex Laboratories Ltd., North Vancouver, B.C.  
 Sample digestion: Hot HNO<sub>3</sub>-HCl Extraction  
 Analytical technique: Air - Acetylene AAS  
 Cartography: P.A. Lombard

TABLEAU D'ASSEMBLAGE DU SYSTÈME NATIONAL DE RÉFÉRENCE CARTOGRAPHIQUE

21H/6	11E/13	11E/14
21H/9	11E/12	11E/11
21H/8	11E/5	11E/6

INDEX TO ACCORDING MAPS OF THE NATIONAL TOPOGRAPHIC SYSTEM



Produced by the SURVEYS AND MAPPING BRANCH, DEPARTMENT OF ENERGY, MINES AND RESOURCES. Based on aerial photography taken in 1979. Colour check 1980. Reprinted in 1982.

Cartes may be obtained from the Canada Map Office, Department of Energy, Mines and Resources, Ottawa, or your nearest map dealer.

© 1982. All Rights Reserved in Right of Canada. Department of Energy, Mines and Resources.

**OXFORD NOVA SCOTIA**  
 Scale 1:50 000 Échelle

CONVERSION SCALE FOR ELEVATIONS  
 Metres 30 20 10 0 100 200 300 400 500 600 700 800 900 1000  
 Feet 100 66 33 0 330 660 990 1320 1650 1980 2310 2640 2970 3300

ÉCHELLE DE CONVERSION DES ALTITUDES  
 Mètres 300 200 100 0 100 200 300 400 500 600 700 800 900 1000  
 Pieds 1000 660 330 0 330 660 990 1320 1650 1980 2310 2640 2970 3300

CONTOUR INTERVAL 10 FEET  
 ÉCHELLE DES COURBES 10 MÈTRES

OPEN FILE  
 DOSSIER PUBLIC  
 1244  
 Geological Survey Commission  
 Ottawa